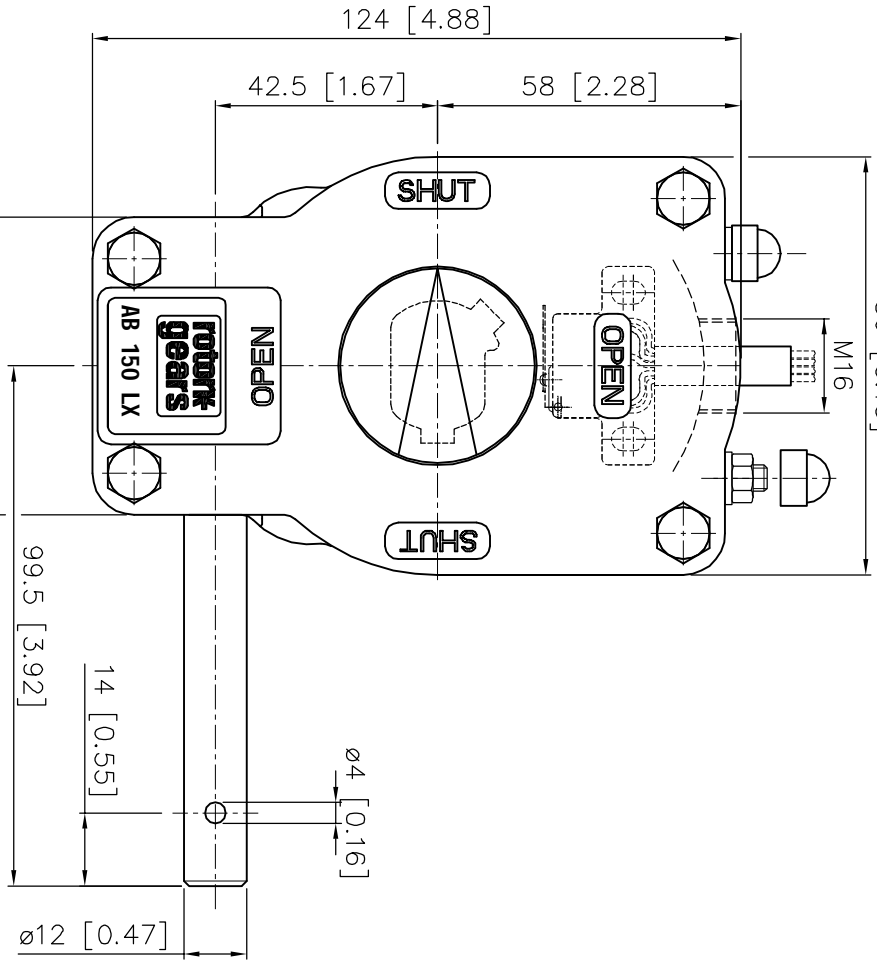
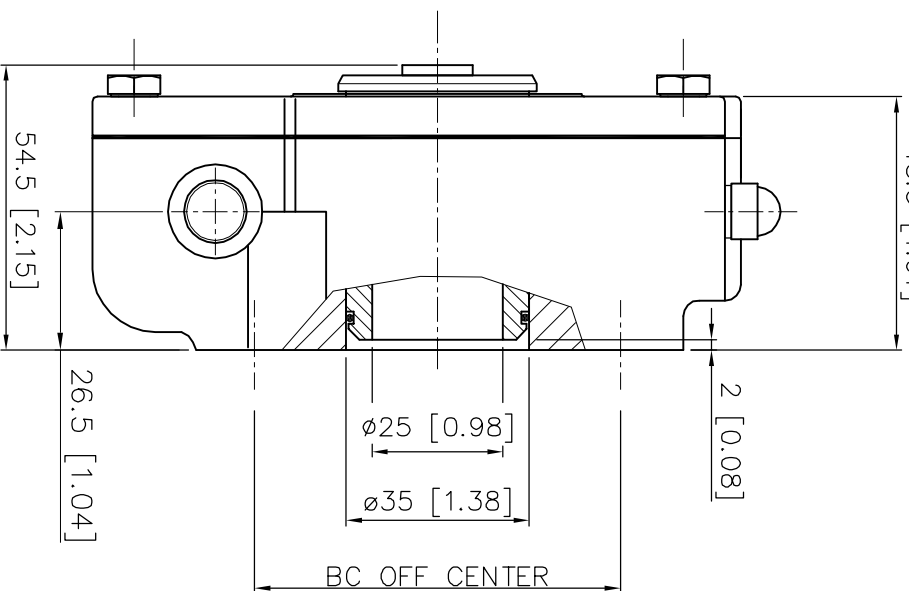


80 [3.15]



Max. STEM height
diameter dependdble
48.5 [1.91]



Suitable for insert 05 Serie

DESCRIPTION

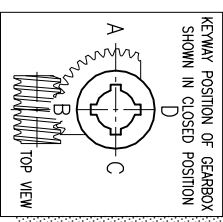
TRAVEL : -5° to 95° adjustable
RATIO : 40 : 1
TURNS TO CLOSE : 10
WEIGHT : 2.2 kg. (4.8 Lb) excl.handwheel

MOUNTINGHOLES

BOLT CIRCLE : min. $\phi 42$ [1.65]
(OFF CENTER) : max. $\phi 70$ [2.75]
acc. ISO 5211 : F04 - F05 - F07
BORE : min. $\phi 8.4$ [0.33] max. $\phi 15$ [0.59] #14[0.55]

TORQUE

max.OUTPUT : 150 Nm (1328 lbf.in.)
max.INPUT : 16 Nm (138 lbf.in.)
M.A. : 9.6 $\pm 15\%$



rotork gears

Nijenheidestraat 25
7581 PV Losser
The Netherlands

GEARBOX AB 150 LX

THIS DOCUMENT IS PROPERTY OF ROTORK GEARS. NEITHER THIS OR ITS CONTENT MAY BE COPIED OR USED IN ANY OTHER WAY PERMITTED
BY THE INTERESTS OF ROTORK GEARS. ABOVE FINISH OF THIS DOCUMENT SHALL CONSTITUTE KNOWLEDGE AND THE FOREGOING CONDITIONS



Drawn : N.M
Dwg Nr.: D01X1-003

Date : 20-06-06
Rev.: 02