

80 [3.15]

124 [4.88]

58 [2.28]

42.5 [1.67]

SHUT

OPEN

SHUT

NEPO  
rotork  
gears  
AB 150 N

ø4 [0.16]

14 [0.55]

99.5 [3.92]

ø12 [0.47]

57 [2.24]

Suitable for insert 05 Serie

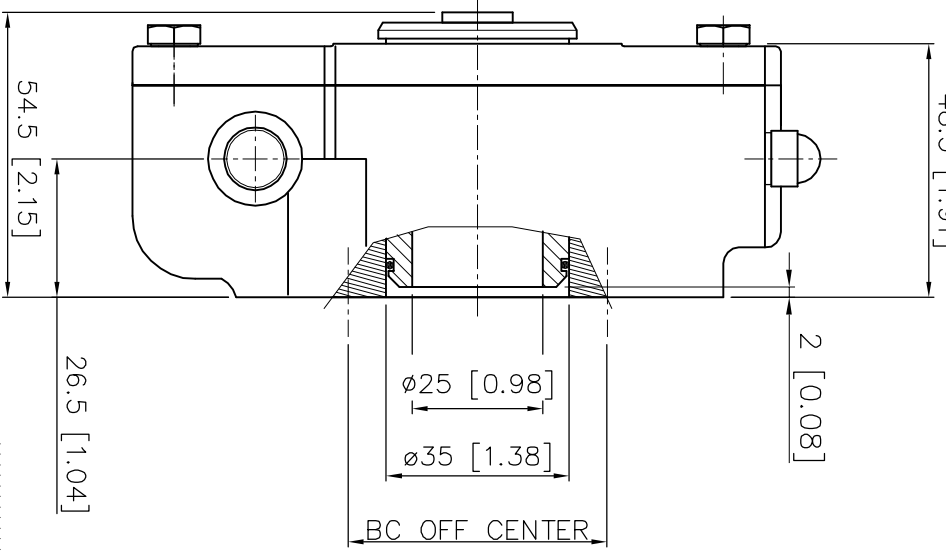
Max. STEM height  
diameter dependdable  
48.5 [1.91]

2 [0.08]

ø25 [0.98]  
ø35 [1.38]

BC OFF CENTER

26.5 [1.04]



DESCRIPTION

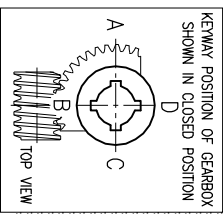
TRAVEL : -5° to 95° adjustable  
RATIO : 40 : 1  
TURNS TO CLOSE : 10  
WEIGHT : 2.2 kg. (4.8 lb) excl.hondwheal

MOUNTINGHOLES

BOLT CIRCLE : min. ø42 [1.65]  
(OFF CENTER) : max. ø70 [2.75]  
acc. ISO 5211 : F04 - F05 - F07  
BORE : min. ø8.4[0.33] max. ø15[0.59] #14[0.55]

TORQUE

max.OUTPUT : 150 Nm (1200 lbf.in.)  
max.INPUT : 16 Nm (123 lbf.in.)  
M.A. : 9.6 ±15%

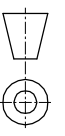


**rotork gears**

Nijenhelderroot 25  
7581 PV Losser  
The Netherlands

**GEARBOX AB 150 N**

THIS DOCUMENT IS PROPERTY OF ROTORK GEARS. NEITHER THIS OR ITS CONTENT MAY BE COPIED OR USED IN ANY OTHER WAY PERMITTED BY THE INTERNS OF ROTORK GEARS. ASSE FINE OF THIS DOCUMENT SHALL CONSTITUTE A FORMAL VIOLATION OF THE AGREEMENT CONDUCTIONS



Drawn : N.M

Dwg Nr.: D01N1-002

Date : 20-06-06

Rev.: 02