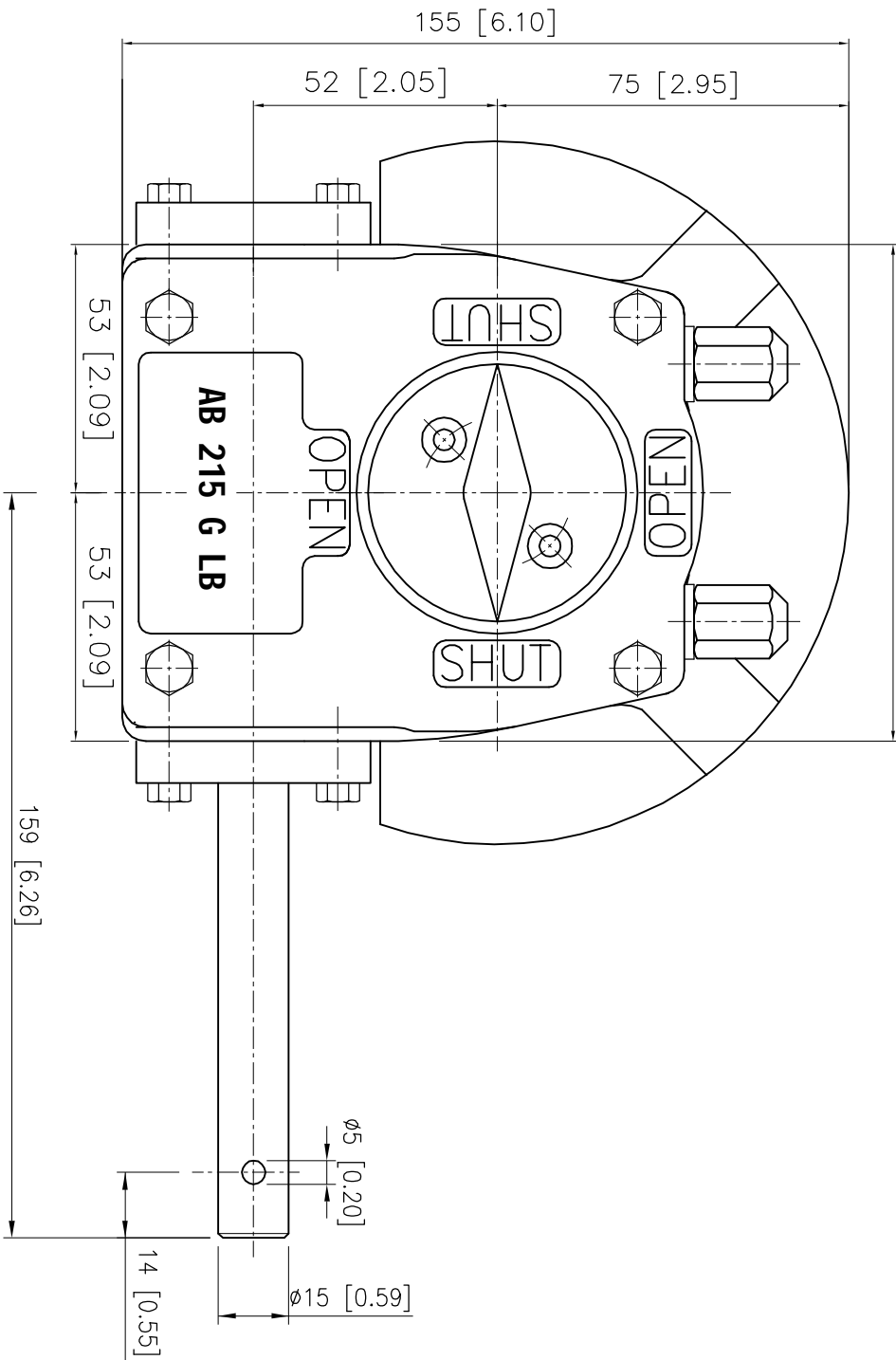
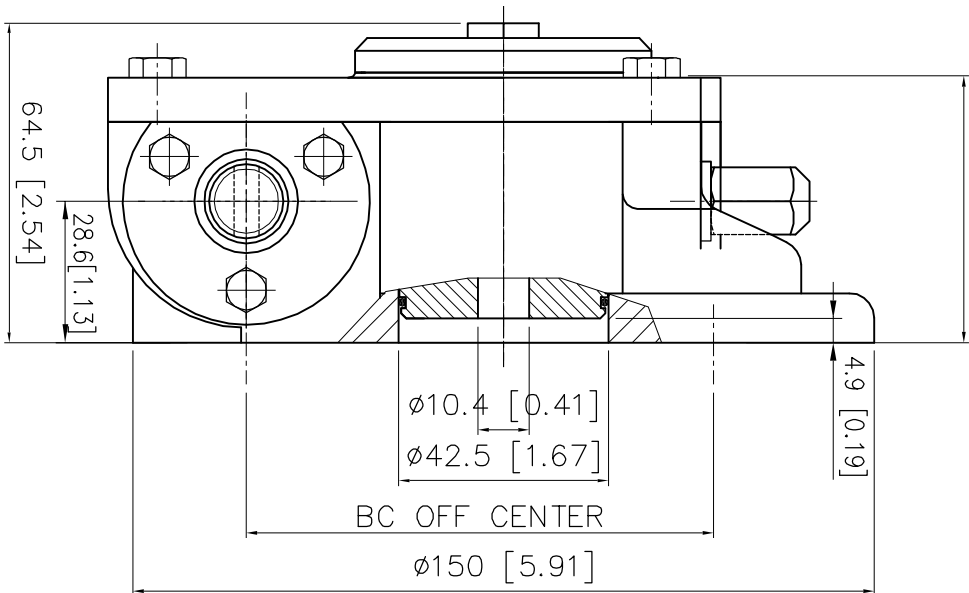


106 [4.17]



Max. STEM height
54 [2.13]



DESCRIPTION

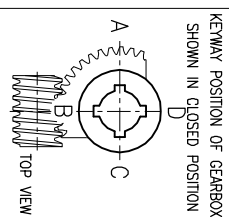
TRAVEL : -5° to 95° adjustable
RATIO : 37 : 1
TURNS TO CLOSE : 9.25
WEIGHT : 5.5kg. (12.1 Lb.) excl.handwheel

MOUNTINGHOLES

BOLT CIRCLE : min. $\phi 50$ [1.97]
(OFF CENTER) max. $\phi 125$ [4.92]
acc. ISO 5211 : F05-F07-F10-F12
BORE : min.10.4[0.41] max. $\phi 30$ [1.18] #24[0.94]

TORQUE

max.OUTPUT : 500 Nm (4425 lbf.in.)
max.INPUT : 43 Nm (381 lbf.in.)
M.A. : 11.6 ±15%



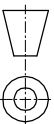
Dimensions in MM [inch]

rotork gears

Nijenheidestraat 25
7281 PV Losser
The Netherlands

GEARBOX AB 215 G LB

THIS DOCUMENT IS PROPERTY OF ROTORK GEARS. NEITHER THIS OR ITS CONTENT MAY BE COPIED OR USED IN ANY OTHER WAY WITHOUT THE INTEREST OF ROTORK GEARS. ANY PART OF THIS DOCUMENT SHALL CONSTITUTE KNOWLEDGE AND/OR INFORMATION OF THE PERSONS IN CONNECTIONS



Drawn : S.B.

Date : 04-11-2009

Dwg Nr.: D02GLB-011

Rev.: 01