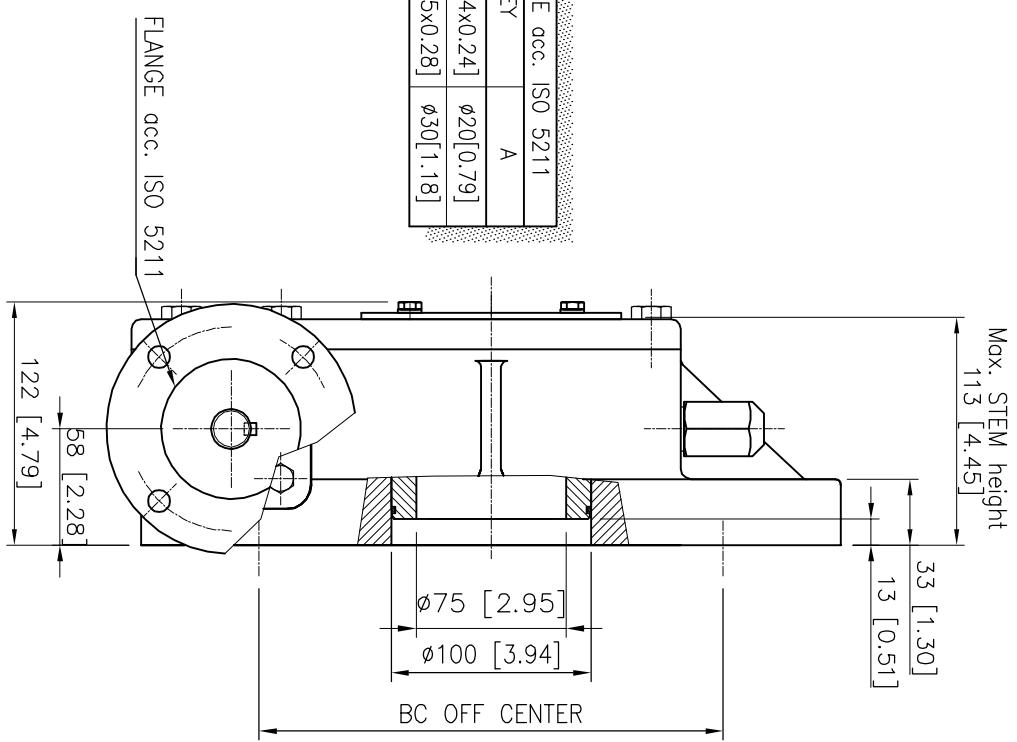


FLANGE TYPE	acc.	ISO 5211
type	KEY	A
F10	6x6 [0.24x0.24]	ø20[0.79]
F14	8x7 [0.35x0.28]	ø30[1.18]



DESCRIPTION

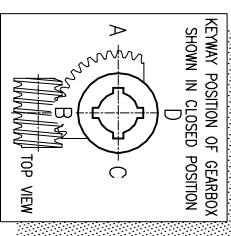
TRAVEL : 90° ±5° AT BOTH ENDS.
 RATIO : 52 : 1
 TURNS TO CLOSE : 13
 WEIGHT : 44.7kg.(98.5lb.) excl.handwheel

MOUNTINGHOLES

BOLT CIRCLE : min. ø125 [4.92]
 (OFF CENTER) max. ø298 [11.73]
 acc. ISO 5211 : F12-F14-F16-F25-F30
 BORE : min.16[0.63] max.ø55[2.05] #46[1.81]

TORQUE

max.OUTPUT : 5500 Nm (48679 lbf.in.)
 max.INPUT : 289 Nm (2562 lbf.in.)
 M.A. : 19 ±15%



Dimensions in MM [Inch]

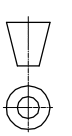
Suitable for insert 240 serie



Nijverheidstraat 25
 7561 LA, Loosdrecht
 The Netherlands

GEARBOX E 1950G F10-F14 BU LB

THIS DOCUMENT IS PROPERTY OF ROTORK GEARS. NEITHER THIS OR ITS CONTENT MAY BE COPIED OR USED IN ANY OTHER WAY DETRIMENTAL TO THE INTEREST OF ROTORK GEARS. ACCEPTANCE OF THIS DOCUMENT SHALL CONSTITUTE ACKNOWLEDGEMENT OF THE FOREGOING CONDITIONS



Drawn : P.vH Date : 28-01-09
 Dwg Nr.: E 1950GI F10-F14 BU LB Rev.: 01