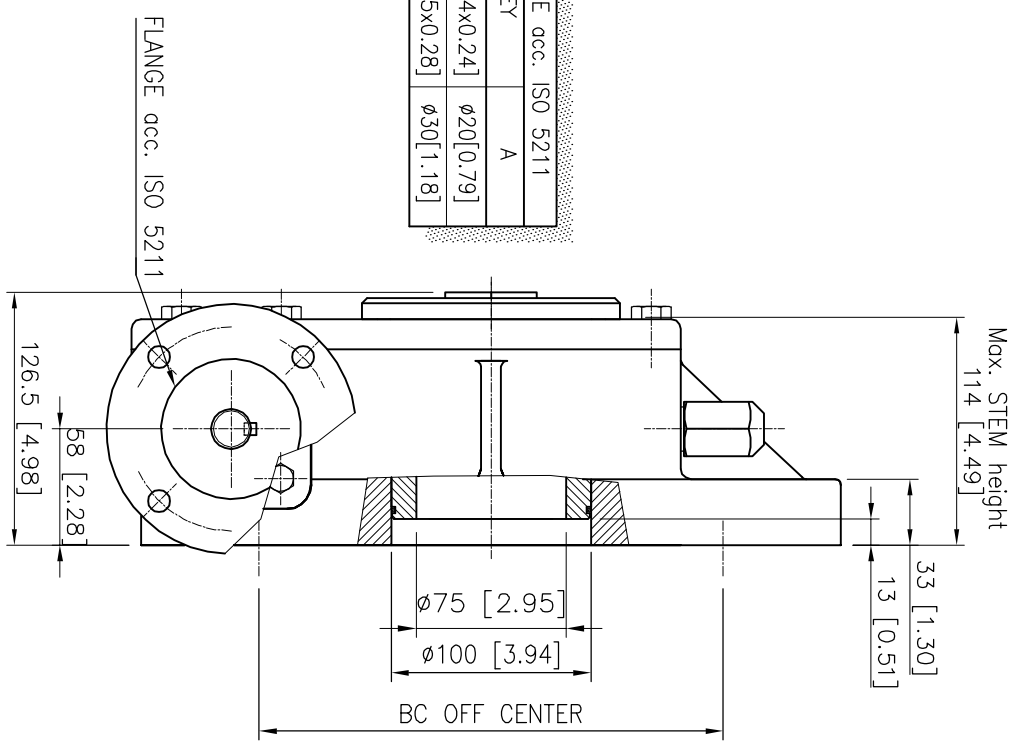


FLANGE TYPE acc. ISO 5211	
type	KEY
F10	6x6 [0.24x0.24]
F14	8x7 [0.35x0.28]
	$\phi 20$ [0.79]
	$\phi 30$ [1.18]



DESCRIPTION

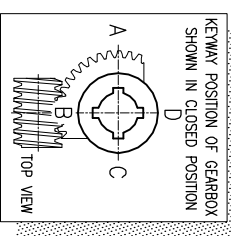
TRAVEL : 90° ±5° AT BOTH ENDS.
 RATIO : 52 : 1
 TURNS TO CLOSE : 13
 WEIGHT : 44.7kg.(98.5lb.) excl.handwheel

MOUNTINGHOLES

BOLT CIRCLE : min. $\phi 125$ [4.92]
 (OFF CENTER) max. $\phi 298$ [11.73]
 acc. ISO 5211 : F12-F14-F16-F25-F30
 BORE : min.16[0.63] max. $\phi 55$ [2.05] #46[1.81]

TORQUE

max.OUTPUT : 5500 Nm (48679 lbf.in.)
 max.INPUT : 289 Nm (2562 lbf.in.)
 M.A. : 19 ±15%

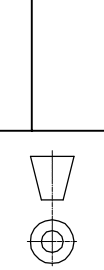


Dimensions in MM [Inch]

Suitable for insert 240 serie

rotork gears
 Nijverheidstraat 25
 7561 LA, Loosdrecht
 The Netherlands

GEARBOX E 1950G F10-F14 LB



Drawn : N.M
 Date : 08-12-08
 Dwg Nr.: D22GILB-001
 Rev.: 01