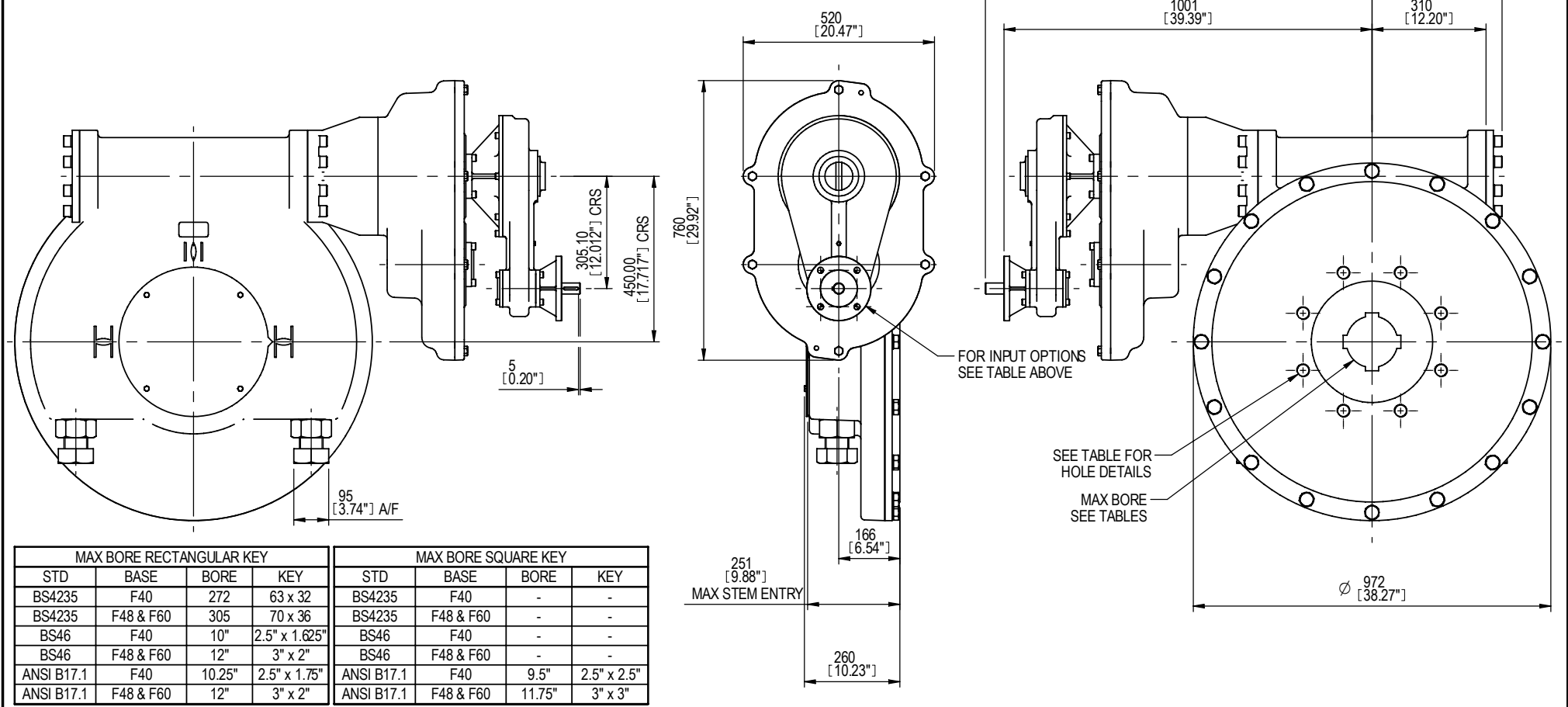


INPUT FLANGE DETAILS						
	FLANGE O/DIA & THICKNESS	SHAFT DIA.	RECESS DIA.	RECESS DEPTH	HOLE DETAILS (OFF CRS)	KEY DETAILS
ISO F10	Ø125 (Ø4.92") x 10 (0.39")	Ø20.00 -0.05 (Ø0.787" -0.002")	Ø70.05 +0.05 (Ø2.758" +0.002")	5 (0.20")	4 HOLES Ø10.5 (Ø0.41") ON Ø102.0 (Ø4.02") P.C.	6x6x40 (0.24"x0.24"x1.57")
FA10	Ø125 (Ø4.92") x 10 (0.39")	Ø20.00 -0.05 (Ø0.787" -0.002")	Ø58.75 +0.05 (Ø2.313" +0.002")	5 (0.20")	4 HOLES Ø10.5 (Ø0.41") ON Ø102.0 (Ø4.02") P.C.	6x6x40 (0.24"x0.24"x1.57")
ISO F14	Ø175 (Ø6.89") x 15 (0.59")	Ø30.00 -0.05 (Ø1.181" -0.002")	Ø100.05 +0.05 (Ø3.939" +0.002")	5 (0.20")	4 HOLES Ø16.5 (Ø0.65") ON Ø140.0 (Ø5.51") P.C.	8x7x40 (0.31"x0.28"x1.57")
FA14	Ø175 (Ø6.89") x 15 (0.59")	Ø30.00 -0.05 (Ø1.181" -0.002")	Ø95.27 +0.05 (Ø3.751" +0.002")	5 (0.20")	4 HOLES Ø16.5 (Ø0.65") ON Ø140.0 (Ø5.51") P.C.	8x7x40 (0.31"x0.28"x1.57")

BASEPLATE DETAILS (ALTERNATIVES AVAILABLE ON REQUEST)	
	HOLE DETAILS (OFF CRS)
ISO F40	8 HOLES M36x38 (1.50") DEEP ON Ø406.0 (15.98") P.C.
ISO F48	12 HOLES M36x38 (1.50") DEEP ON Ø483.0 (19.02") P.C.
ISO F60	20 HOLES M36x38 (1.50") DEEP ON Ø603.0 (23.74") P.C.



MAX BORE RECTANGULAR KEY			
STD	BASE	BORE	KEY
BS4235	F40	272	63 x 32
BS4235	F48 & F60	305	70 x 36
BS46	F40	10"	2.5" x 1.625"
BS46	F48 & F60	12"	3" x 2"
ANSI B17.1	F40	10.25"	2.5" x 1.75"
ANSI B17.1	F48 & F60	12"	3" x 2"

MAX BORE SQUARE KEY			
STD	BASE	BORE	KEY
BS4235	F40	-	-
BS4235	F48 & F60	-	-
BS46	F40	-	-
BS46	F48 & F60	-	-
ANSI B17.1	F40	9.5"	2.5" x 2.5"
ANSI B17.1	F48 & F60	11.75"	3" x 3"

ROTORK GEARS
 REGINA HOUSE
 RING ROAD
 BRAMLEY
 LEEDS
 WEST YORKSHIRE

OUTLINE DETAILS OF IW13/IR4/AS6 1210:1 TO 5760:1 MOTORISED GEARBOX

DETAILS SUBJECT TO CHANGE WITHOUT PRIOR NOTICE

FOR UP TO DATE DETAILS VISIT www.rotork.com

ISSUE :-	2	SCALE :-	1 : 15 (A4)
DATE :-	22/09/2010		
DRAWING No :-	IW13CDS3		