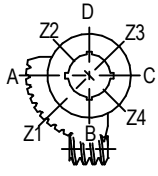


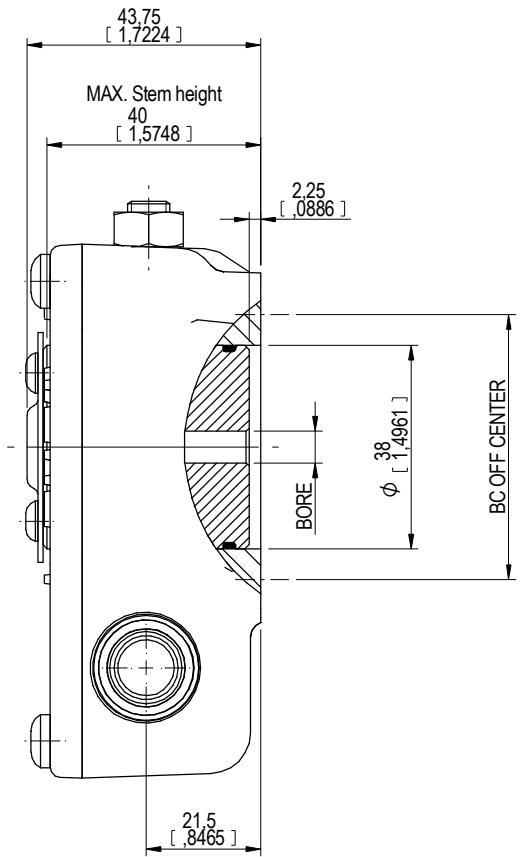
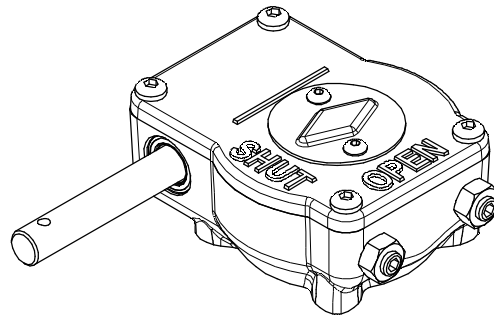
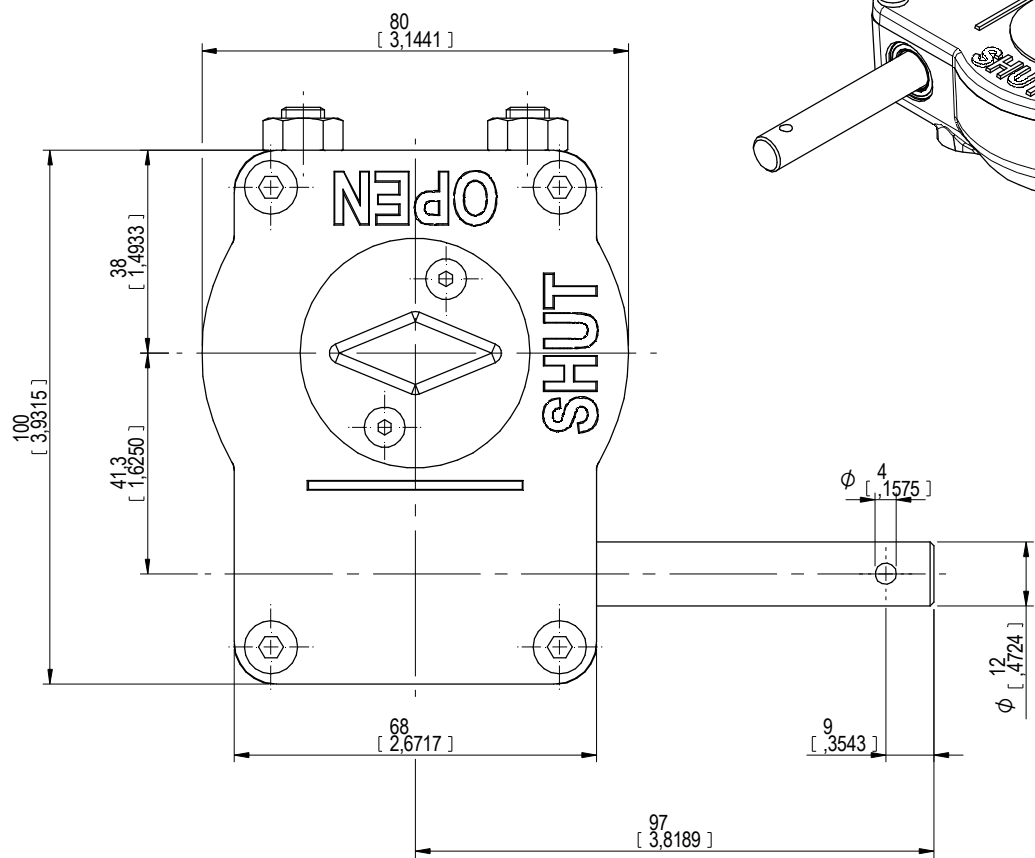
KEYWAY POSITION OF GEARBOX SHOWN IN CLOSED POSITION



TOP VIEW

DESCRIPTION				MOUNTING HOLES - BOLT CIRCLE (OFF CENTRES)			BORE: STEM ACCEPTANCE WITH KEYWAY IN ACCORDING WITH STANDARD			TORQUE			
RATIO	TURNS TO CLOSE	TRAVEL (1/4 TURN)	WEIGHT	NR of HOLES	MIN ENVELOPE PCD - ØHOLE	MAX ENVELOPE PCD + ØHOLE	ACCORDING TO ISO 5211 / MSS SP-101	MIN	MAX	STANDARD	OUTPUT	INPUT	MA
40:1	10	-5° TO 95°	1.5 kg	4	Ø70 mm	Ø70 mm	F07	Ø6 mm	Ø24 mm □22 mm	ISO 773 A	300 Nm	30 Nm	10 ± 10%
				8	-	-	-	-	-	-	-	-	
			3.3 lbs	4	Ø2.76 inch	Ø2.76 inch	FA07	Ø0.24 inch	Ø0.94 inch □0.87 inch	ANSI B17.1	2655 lbf.in	265.5 lbf.in	
				8	-	-	-	-	-	-	-	-	

AS PART OF CONTINUOUS PRODUCT DEVELOPMENT, ALL DETAILS SUBJECT TO CHANGE WITHOUT PRIOR NOTICE. FOR UP TO DATE DETAILS PLEASE VISIT [www.rotork.com](http://www.rotork.com)



00				DD-MM-YYYY	FIRST ISSUE
Rev	CN	Revised	Approved	Date	Change Description

**rotork**  
Gears  
LOSSER - THE NETHERLANDS  
[www.rotork.com](http://www.rotork.com)

This drawing is confidential and is the property of Rotork Gears and must not be reproduced either wholly or partly. All rights in respect of patents, designs and copyrights are reserved. © 2013

Document type	DETAIL DRAWINGS		Title	242-20S LEFT HANDED	
			Dimensions in mm [inch]		
			Scale	1:1	
Created	Robbin.Goesen	7-5-2013	Drawing Number	242-20S LH	
Checked	Henk Hoff	7-5-2013	Rev	00	
Approved	Henk Hoff	7-5-2013	Sheet	1 of 1	Size A3

Rev.01