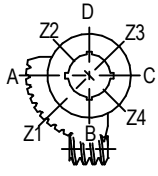


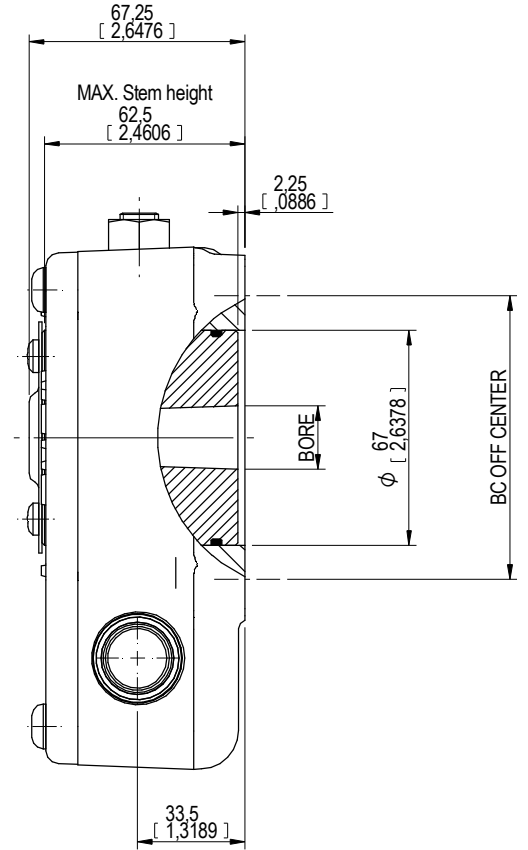
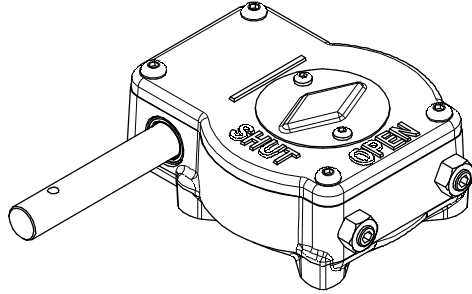
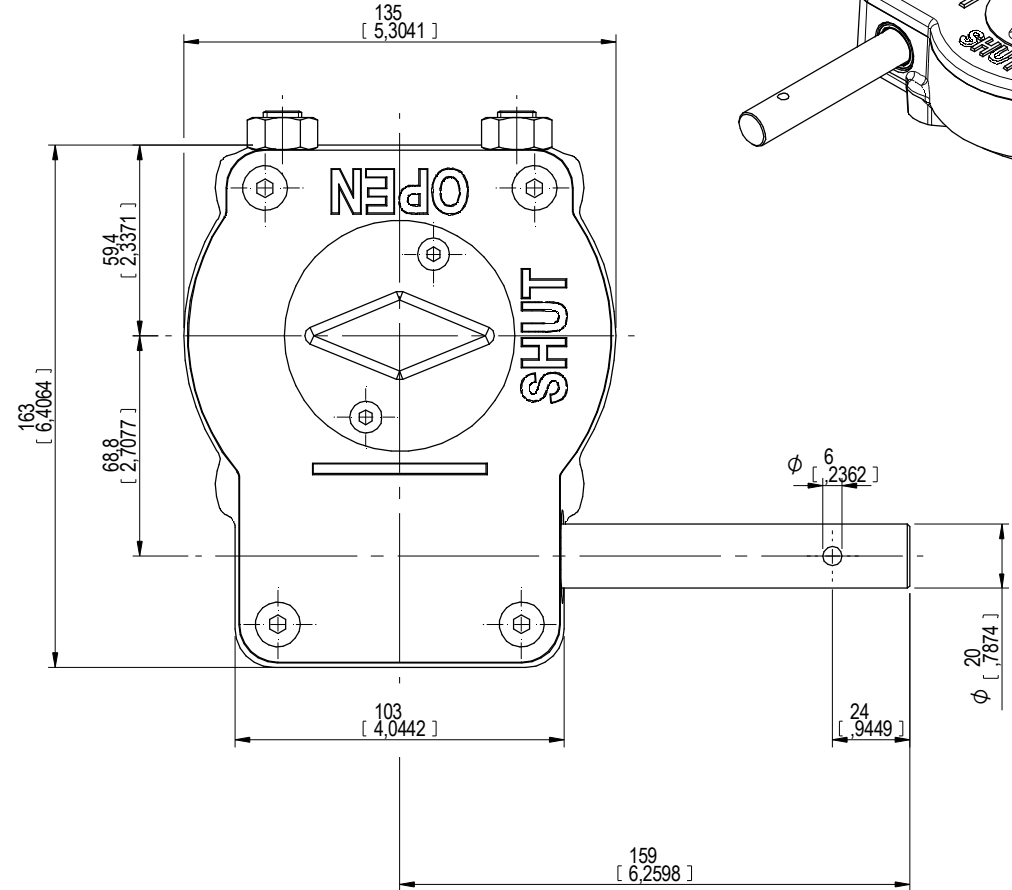
KEYWAY POSITION OF GEARBOX SHOWN IN CLOSED POSITION



TOP VIEW

RATIO	DESCRIPTION		MOUNTING HOLES - BOLT CIRCLE (OFF CENTRES)				BORE: STEM ACCEPTANCE WITH KEYWAY IN ACCORDING WITH STANDARD			TORQUE			
	URNS TO CLOSE	TRAVEL (1/4 TURN)	WEIGHT	NR of HOLES	MIN ENVELOPE PCD - ØHOLE	MAX ENVELOPE PCD + ØHOLE	ACCORDING TO ISO 5211 / MSS SP-101	MIN	MAX	STANDARD	OUTPUT	INPUT	MA
40:1	10	-5° TO 95°	5.7 kg	4	Ø102 mm	Ø125 mm	F10 - F12	Ø20 mm	Ø47 mm □40 mm	ISO 773 A	1200 Nm	120 Nm	10 ± 10%
			12.54 lbs	8	-	-	-						
			4	Ø4.02 inch	Ø4.92 inch	FA10 - FA12	Ø0.79 inch	Ø1.85 inch □1.57 inch	ANSI B17.1	10620 lbf.in	1062 lbf.in		
			8	-	-	-							

AS PART OF CONTINUOUS PRODUCT DEVELOPMENT, ALL DETAILS SUBJECT TO CHANGE WITHOUT PRIOR NOTICE. FOR UP TO DATE DETAILS PLEASE VISIT [www.rotork.com](http://www.rotork.com)



LOSSER - THE NETHERLANDS  
[www.rotork.com](http://www.rotork.com)

This drawing is confidential and is the property of Rotork Gears and must not be reproduced either wholly or partly. All rights in respect of patents, designs and copyrights are reserved. © 2013

Document type		<b>DETAIL DRAWINGS</b>	Title		<b>242-40S LEFT HANDED</b>
			Dimensions in mm [inch]		
			Scale		1:1.67
Created	Robbin.Goosen	7-5-2013	Drawing Number		Rev 00
Checked	Henk Hoff	7-5-2013	<b>242-40S LH</b>		
Approved	Henk Hoff	7-5-2013	Sheet 1 of 1	Size A3	

Rev 01