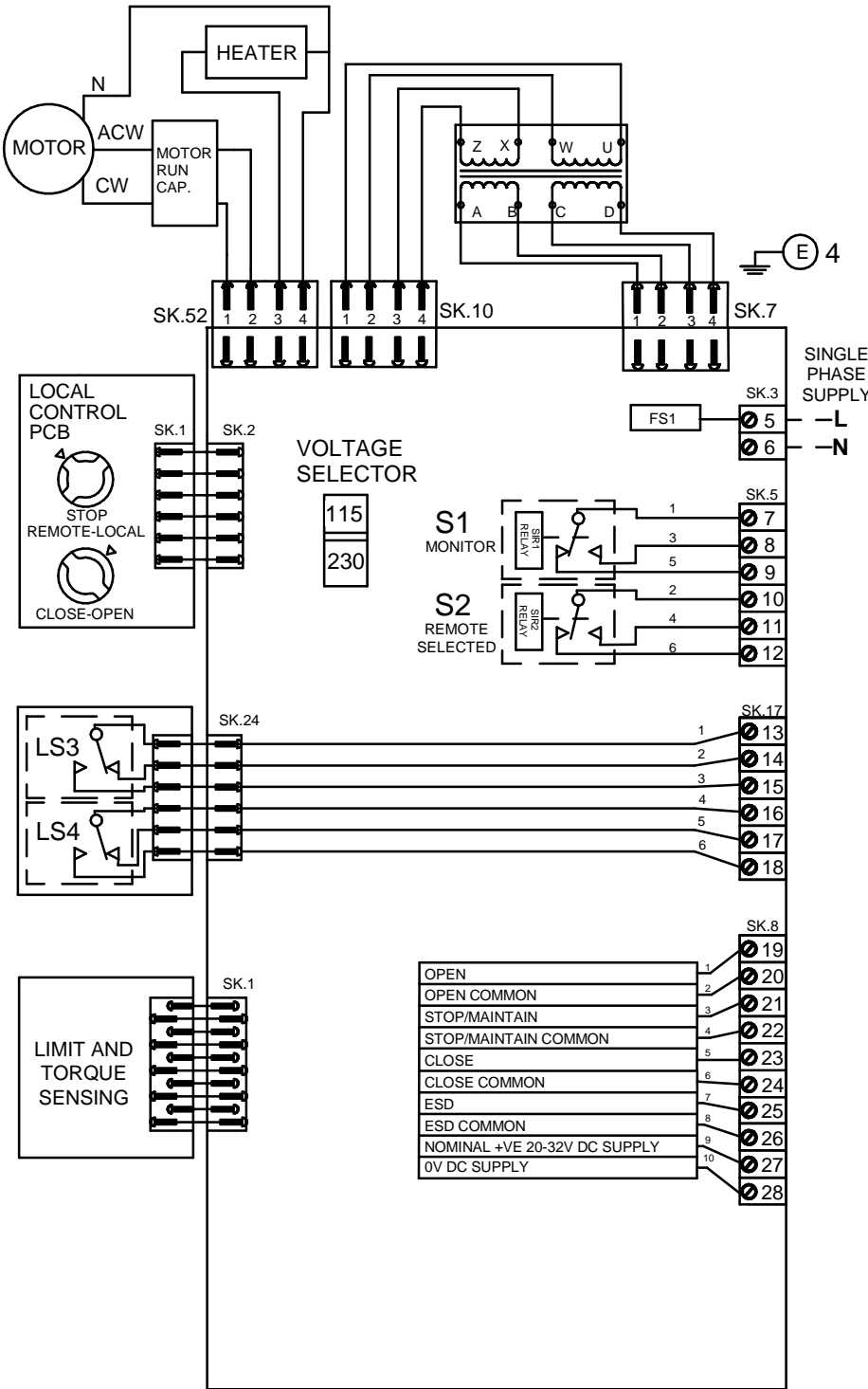


CIRCUIT DRAWN WITH
POWER SUPPLY OFF



TRANSFORMER TAPPING

NOM 50/60HZ	50HZ	60HZ
110/120	92-135	92-135
220/230	176-242	176-242

FS1 - SEE ROMPAK PUB008-006 INSTALLATION AND MAINTENANCE MANUAL

NOTE

FOR TYPICAL REMOTE CONTROL INDICATING, MONITORING AND ALARM CIRCUITS SEE PUBLICATION DOC862

MAX EXTERNAL LOAD ON S1/S2 RELAYS TO BE 5A. MAX VOLTAGE 120V AC/DC

MAX EXTERNAL LOAD ON TERMINAL 27 & 28 TO BE 3W

CONTROL SIGNAL THRESHOLD VOLTAGES:

- MAX 60V DC
- TO BE MINIMUM 'ON' 14V DC AT 1mA
- MAXIMUM 'OFF' = 3V
- MINIMUM CONTROL SIGNAL DURATION TO BE 300mS.

CURRENT DRAWN FROM EACH REMOTE CONTROL SIGNAL IS 5mA ON 24V DC

LS3 / LS4

MAXIMUM CURRENT 3A MAXIMUM VOLTAGE 120V AC/DC

VOLTAGE SELECT SWITCH SW1, MUST BE CONFIGURED CORRECTLY BEFORE APPLYING POWER.

ACTUATOR CONFIGURATION VIA DIL SWITCH SW2

ROM1 AND ROMA DO NOT SUPPORT TORQUE LIMIT

REFER TO INSTALLATION INSTRUCTIONS FOR DIL SWITCH SELECTION

Iss	Date	Chkd	Revision Details
3	250414		Drawing layout and text change

www.rotork.com

ROTORK CONTROLS LTD
BATH, BA1 3JQ
ENGLAND
Tel:01225-733200

ROTORK CONTROLS INC
ROCHESTER
NY 14624, USA
Tel:585-247-2304

ROMPAK 1PH BASIC+TORQUE SWITCHES

Drawn by: VYA
Date : 25-Apr-14
Base WD: R001-000
Job No : --
MI No : --

Circuit Diagram No	Issue No
R001-000	3