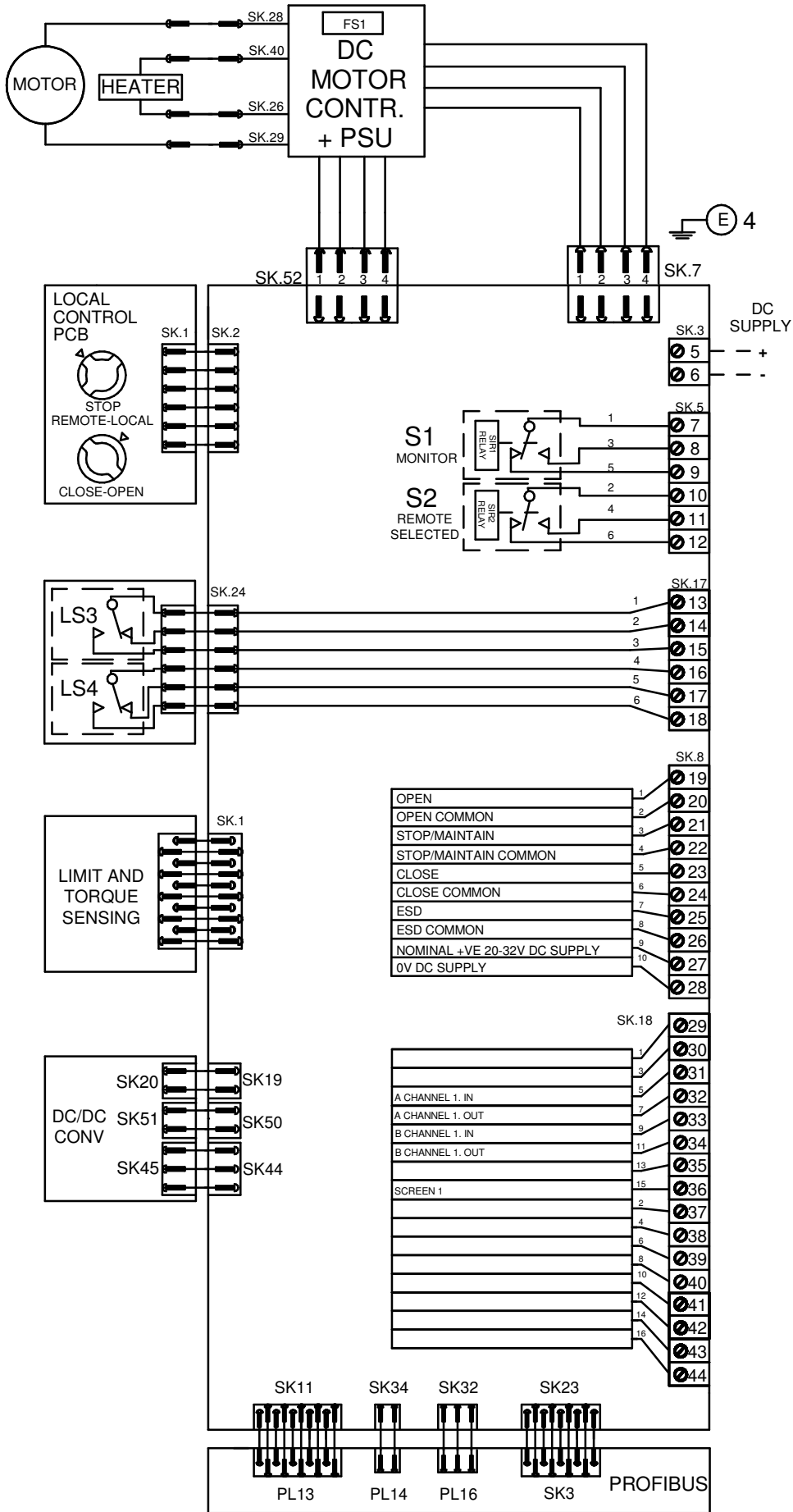


CIRCUIT DRAWN WITH
POWER SUPPLY OFF



FS1 - See ROMPAK PUB008-006 Installation and Maintenance Manual

NOTE

FOR TYPICAL REMOTE CONTROL INDICATING, MONITORING AND ALARM CIRCUITS SEE PUBLICATION DOC862

MAX EXTERNAL LOAD ON S1/S2 RELAYS TO BE 5A. MAX VOLTAGE 120V AC/DC

MAX EXTERNAL LOAD ON TERMINAL 27 & 28 TO BE 3W

CONTROL SIGNAL THRESHOLD VOLTAGES:

MAX 60V DC

TO BE MINIMUM 'ON' 14V DC AT 1mA
MAXIMUM 'OFF' = 3V

MINIMUM CONTROL SIGNAL DURATION TO BE 300mS.

CURRENT DRAWN FROM EACH REMOTE CONTROL SIGNAL IS 5mA ON 24V DC

LS3 / LS4

MAXIMUM CURRENT 3A MAXIMUM VOLTAGE 120V AC/DC

ACTUATOR CONFIGURATION VIA DIL SWITCH SW2

ROM1 AND ROMA DO NOT SUPPORT TORQUE LIMIT

REFER TO INSTALLATION INSTRUCTIONS FOR DIL SWITCH SELECTION

Iss	Date	Chkd	Revision Details
3	180414	JJ	Drawing layout and text change.
4	290719	JJ	Delete SK.10

www.rotork.com

ROTORK CONTROLS LTD BATH, BA1 3JQ ENGLAND Tel:01225-733200	ROTORK CONTROLS INC ROCHESTER NY 14624, USA Tel:585-247-2304
---	---

ROMPAK DC 1CH PROFIBUS+ TORQUE SWITCHES

Drawn by: VYA Date : 18-Apr-14 Base WD: R002-600 Job No : - - MI No : - -	Circuit Diagram No R002-600	Issue No 4
---	---------------------------------------	----------------------