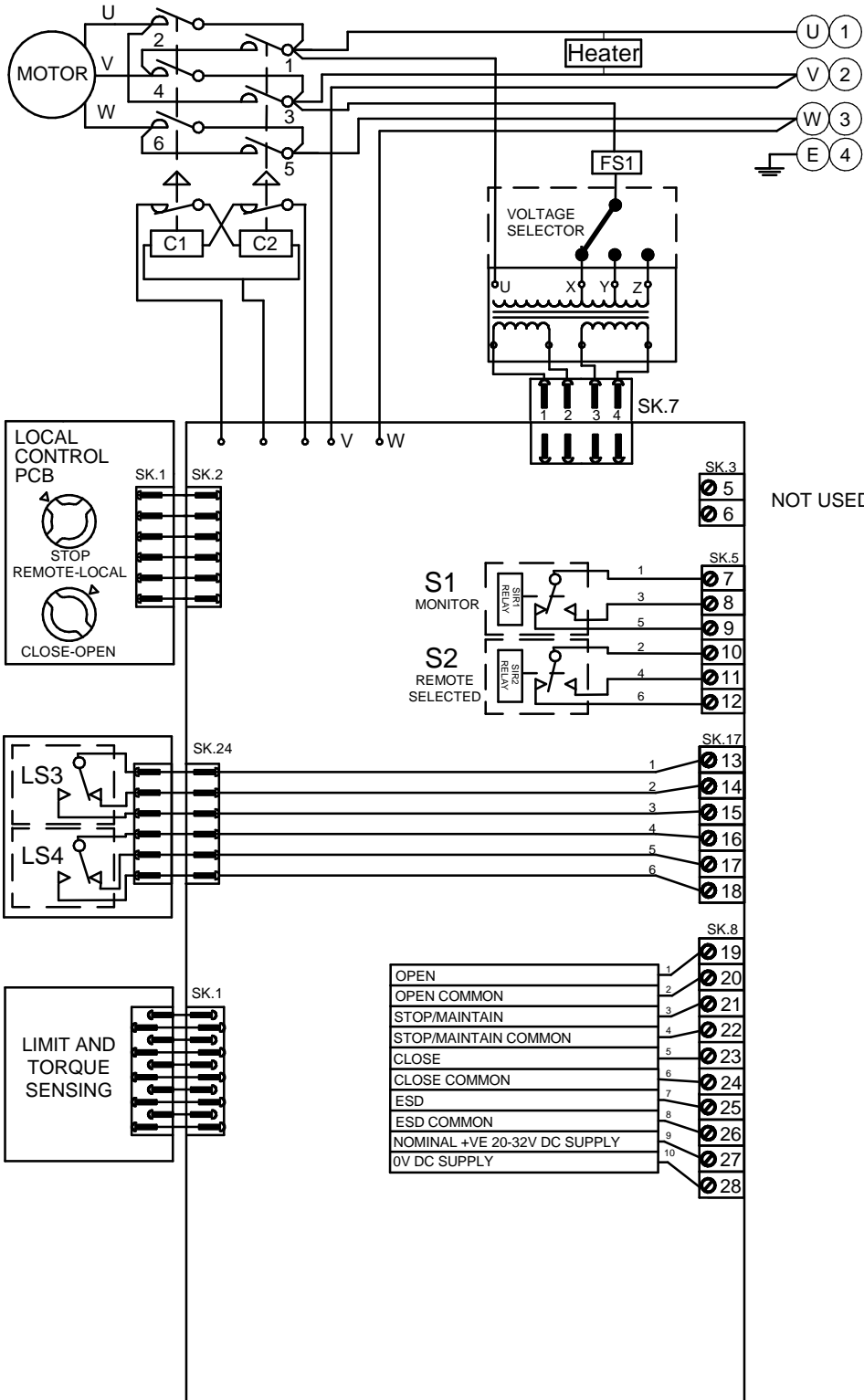


CIRCUIT DRAWN WITH  
POWER SUPPLY OFF

THREE  
PHASE  
SUPPLY



TRANSFORMER TAPPING

TAP	NOM 50/60HZ	50HZ	60HZ
X	220/230	176-242	198-259
Y	380/400	304-418	342-446
Z	440/460	352-484	396-517

FS1 - See ROMPAK PUB008-006 Installation and Maintenance Manual

NOTE

FOR TYPICAL REMOTE CONTROL INDICATING, MONITORING AND ALARM CIRCUITS SEE PUBLICATION DOC862

MAX EXTERNAL LOAD ON S1/S2 RELAYS TO BE 5A. MAX VOLTAGE 120V AC/DC

MAX EXTERNAL LOAD ON TERMINAL 27 & 28 TO BE 3W

CONTROL SIGNAL THRESHOLD VOLTAGES:  
MAX 60V DC  
TO BE MINIMUM 'ON' 14V DC AT 1mA  
MAXIMUM 'OFF' = 3V  
MINIMUM CONTROL SIGNAL DURATION TO BE 300mS.

CURRENT DRAWN FROM EACH REMOTE CONTROL SIGNAL IS 5mA ON 24V DC

LS3 / LS4  
MAXIMUM CURRENT 3A MAXIMUM VOLTAGE 120V AC/DC

ACTUATOR CONFIGURATION VIA DIL SWITCH SW2

ROM1 ADN ROMA DO NOT SUPPORT TORQUE LIMIT

REFER TO INSTALLATION INSTRUCTIONS FOR DIL SWITCH SELECTION

Iss	Date	Chkd	Revision Details
6	250414		Text change etc...

[www.rotork.com](http://www.rotork.com)

ROTORK CONTROLS LTD  
BATH, BA1 3JQ  
ENGLAND  
Tel:01225-733200

ROTORK CONTROLS INC  
ROCHESTER  
NY 14624, USA  
Tel:585-247-2304

ROMPAK 3 PH BASIC + TORQUE SWITCHES

Drawn by: VYA  
Date : 25-Apr-14  
Base WD: R000-000  
Job No : --  
MI No : --

Circuit Diagram No	Issue No
<b>R000-000</b>	<b>6</b>