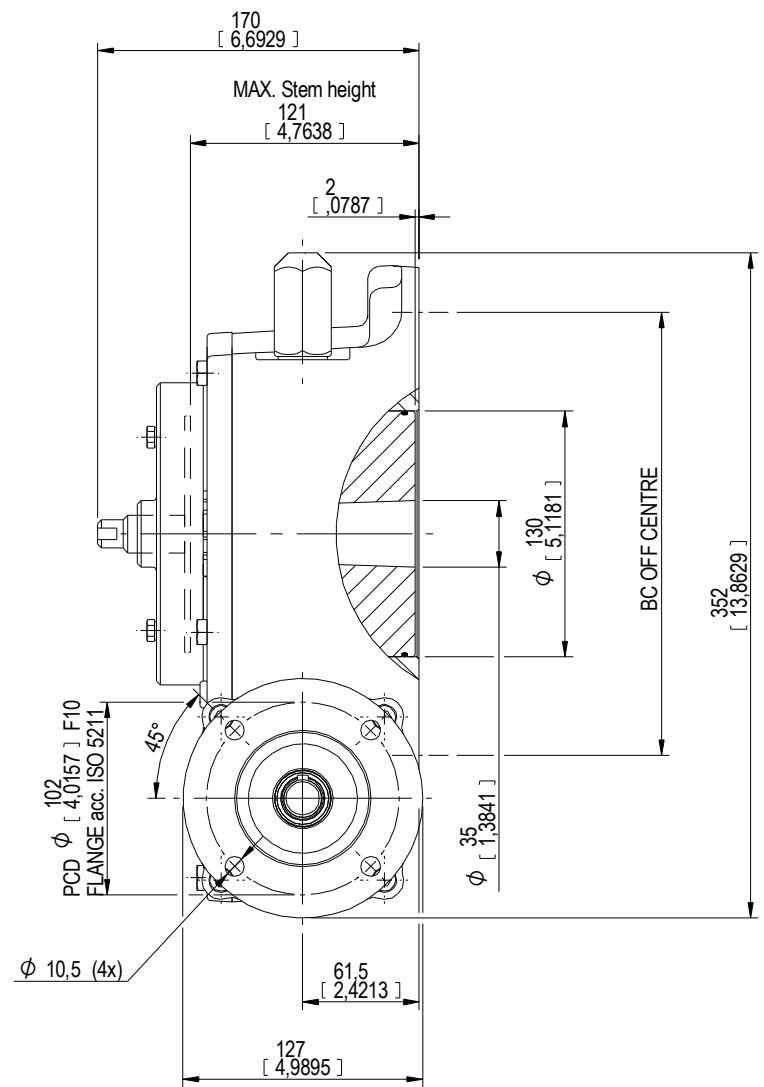
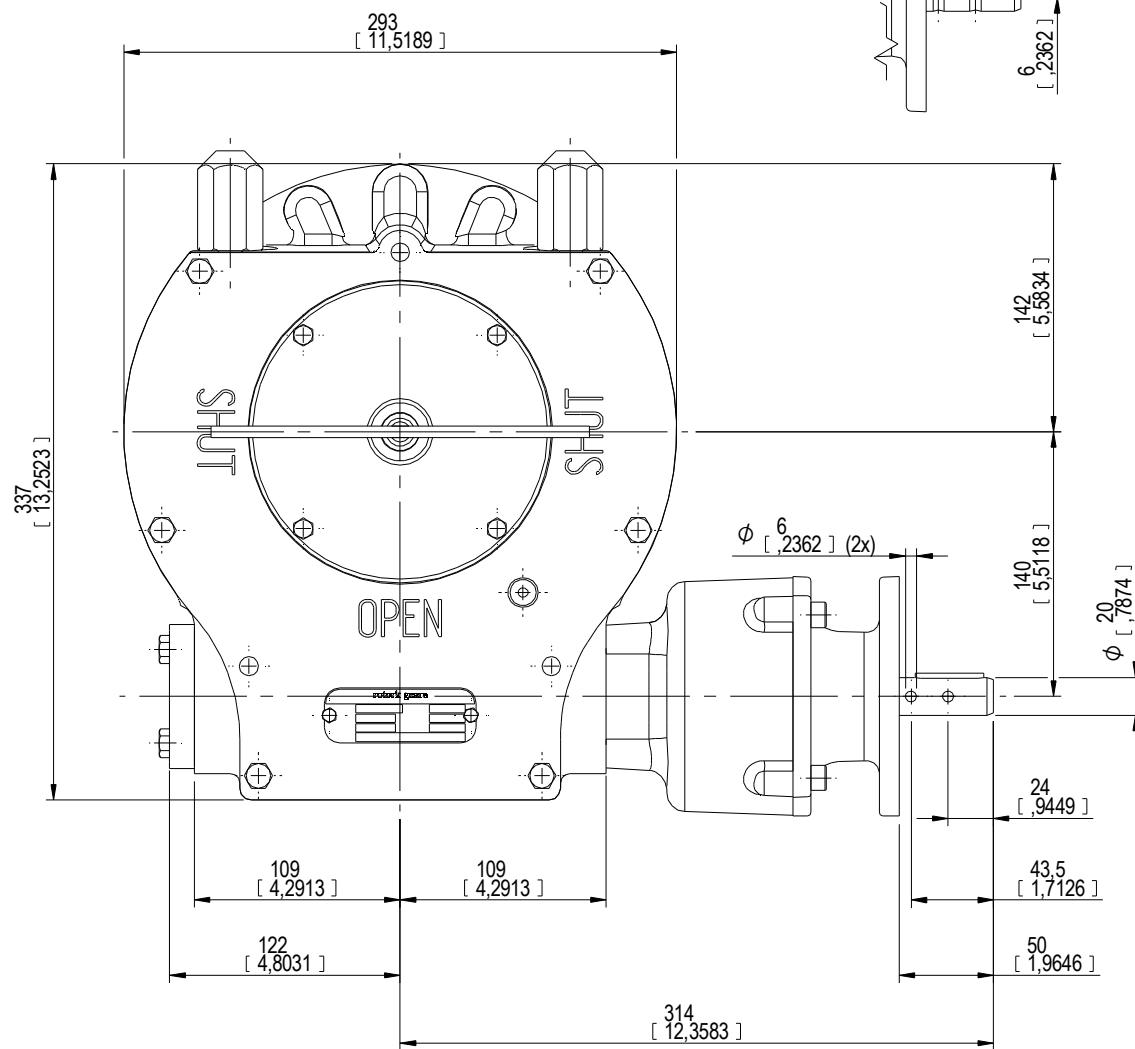
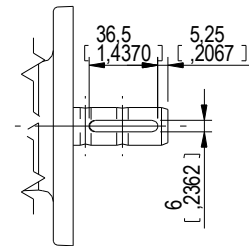


| DESCRIPTION | | MOUNTING HOLES - BOLT CIRCLE (OFF CENTRES) | | | | BORE; STEM ACCEPTANCE WITH KEYWAY IN ACCORDING WITH STANDARD | | | TORQUE | | | | |
|-------------|----------------|--|--------|-------------|--------------------------|--|------------------------------------|------------|-----------------------|------------|---------------|------------|----------|
| RATIO | TURNS TO CLOSE | TRAVEL (1/4 TURN) | WEIGHT | NR of HOLES | MIN ENVELOPE PCD - ØHOLE | MAX ENVELOPE PCD + ØHOLE | ACCORDING TO ISO 5211 / MSS SP-101 | MIN | MAX | STANDARD | OUTPUT | INPUT | MA |
| 243:1 | 61 | -5° TO 95° | 49 kg | 4 | Ø165 mm | Ø254 mm | F16 | Ø35 mm | Ø100 mm □75 mm | ISO 773 A | 9000 Nm | 111 Nm | 81 ± 15% |
| | | | | 8 | Ø165 mm | Ø254 mm | F25 | | | | | | |
| | | | 108 lb | 4 | Ø6.50 inch | Ø10.0 inch | FA16 | Ø1.38 inch | Ø3.94 inch □2.95 inch | ANSI B17.1 | 79.657 lbf.in | 983 lbf.in | |
| | | | | 8 | Ø6.50 inch | Ø10.0 inch | FA25 | | | | | | |

AS PART OF CONTINUOUS PRODUCT DEVELOPMENT, ALL DETAILS SUBJECT TO CHANGE WITHOUT PRIOR NOTICE. FOR UP TO DATE DETAILS PLEASE VISIT www.rotork.com



rotork
LOSSER - THE NETHERLANDS
www.rotork.com

This drawing is confidential and is the property of Rotork Gears and must not be reproduced either wholly or partly. All rights in respect of patents, designs and copyrights are reserved. © 2013

| | | | | | |
|---------------|-----------------|-----------|-------------------------|-------------------------------|----|
| Document type | DETAIL DRAWINGS | | Title | GEARBOX E 3000 G / PR4 SUBSEA | |
| | Scale 1:2 | | Dimensions in mm [inch] | | |
| Created | Robbin.Gosoen | 19-3-2013 | Drawing Number | AB-00057-OUT-1 | |
| Checked | Niels Middel | 19-3-2013 | Rev | 00 | |
| Approved | Niels Middel | 19-3-2013 | Sheet 1 of 1 | Size | AZ |