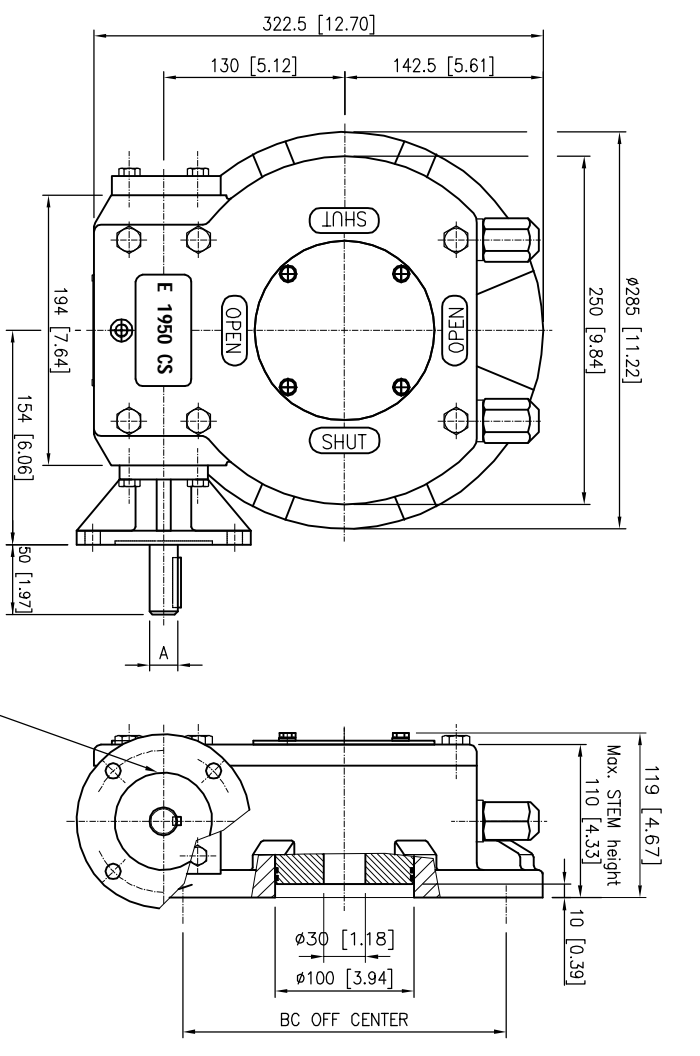


FLANGE TYPE occ. ISO 5211		
type	KEY	A
F10	6x6 [0.24x0.24]	ø20[0.79]
F14	8x7 [0.35x0.28]	ø30[1.18]

MOVING INDICATOR



FLANGE TYPE occ. ISO 5211		
type	KEY	A
F10	6x6 [0.24x0.24]	ø20[0.79]
F14	8x7 [0.35x0.28]	ø30[1.18]

NON MOVING INDICATOR

DESCRIPTION

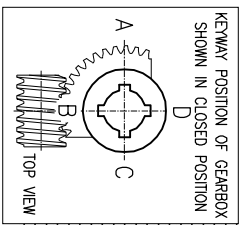
TRAVEL : 90° ±5° AT BOTH ENDS.
 RATIO : 52 : 1
 TURNS TO CLOSE : 13
 WEIGHT : 37 kg.(81.5 lb.) excl.handwheel

MOUNTINGHOLES

BOLT CIRCLE : min. ø125 [4.92]
 (OFF CENTER) max. ø254 [10.00]
 occ. ISO 5211 : F12-F14-F16-F25
 BORE : min.30[1.18] max.ø80[3.15] #60[2.36]

TORQUE

max.OUTPUT : 5500 Nm (48679 lbf.in.)
 max.INPUT : 289 Nm (2562 lbf.in.)
 M.A. : 19 ±15%



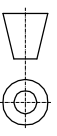
Dimensions in MM [inch]

rotork gears

Nijenheidestraat 25
 7581 PV Losser
 The Netherlands

GEARBOX E 1950 CS F10-F14 L

THIS DOCUMENT IS PROPERTY OF ROTORK GEARS. NEITHER THIS OR ITS CONTENT MAY BE COPIED OR USED IN ANY OTHER WAY PERMITTED BY THE TERMS OF ROTORK GEARS. ABOVE RANGE OF THIS DOCUMENT SHALL CONSTITUTE A KNOWLEDGEMENT OF THE FORESAID CONDITIONS



Drawn : B.H

Date : 20-07-2011

Dwg Nr.: E 1950 CS F10-F14 L

Rev.: 00