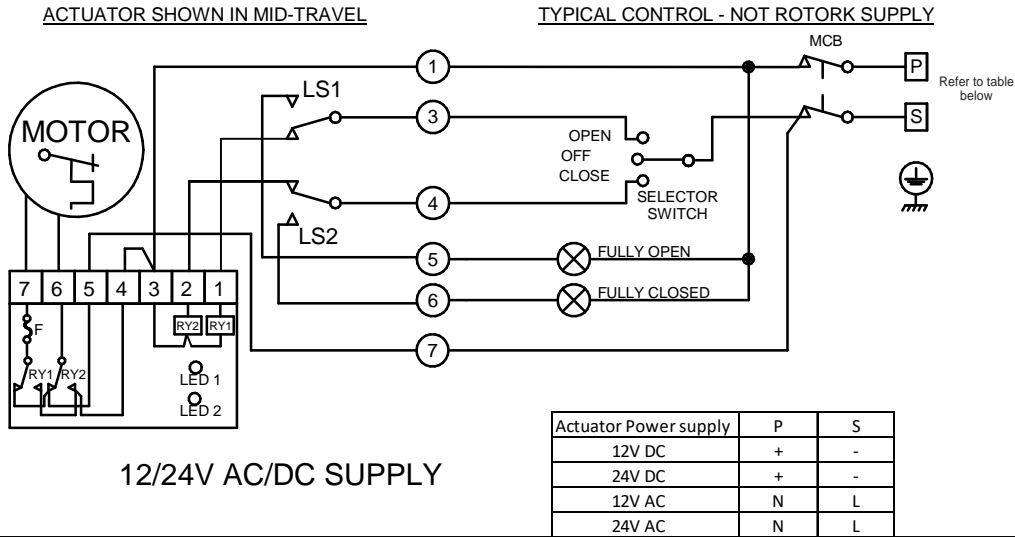
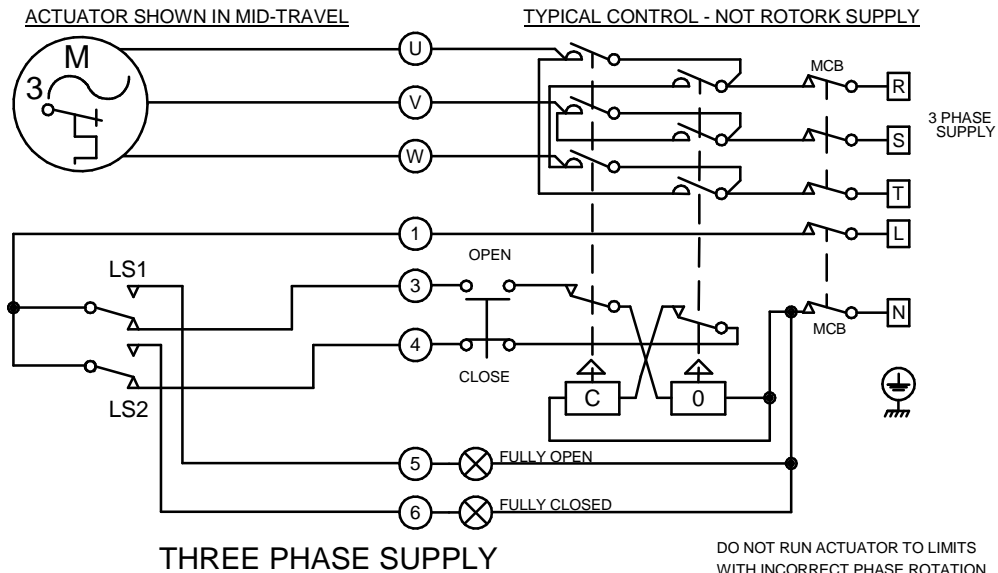
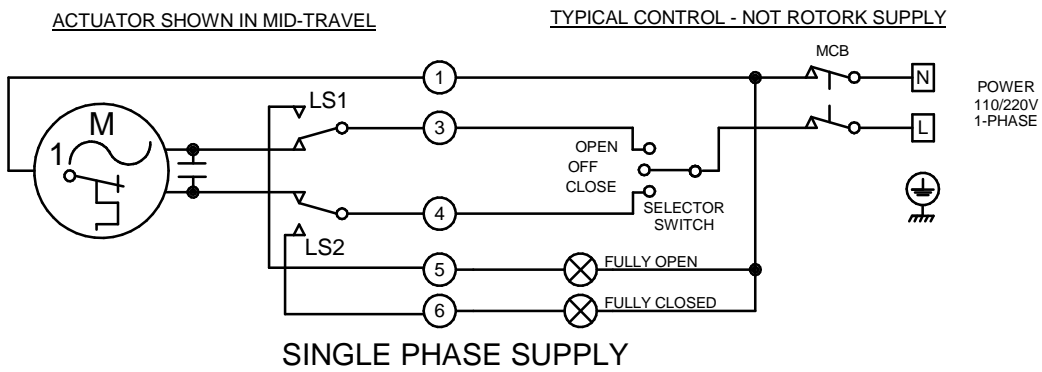


CIRCUIT IS DRAWN FOR A VALVE IN THE MID-TRAVEL



- O - OPEN
- C - CLOSE
- TS - TORQUE SWITCHES
- LS - LIMIT SWITCHES
- MCB - MINITURE CIRCUIT BREAKER
- ACTUATOR TERMINAL

**CAUTION**  
SOLID STATE LOGIC SYSTEMS USING ACTUATOR SWITCH SIGNAL INPUTS MUST BE DESIGNED TO PROVIDE A SWITCHING LOAD OF 1 WATT & 24V MINIMUM WITH A TIME CONSTANT NOT LESS THAN 10ms TO MINIMISE SENSITIVITY TO CONTACT VIBRATION.



DO NOT RUN ACTUATOR TO LIMITS WITH INCORRECT PHASE ROTATION.  
WHERE DISTANCES ARE GREAT BETWEEN ACTUATOR AND CONTROL GEAR, CABLE CAPACITANCE MAY CAUSE CONTACTORS TO STICK ON A.C. CIRCUITS

| Iss | Date          | Chkd | Revision Details                   |
|-----|---------------|------|------------------------------------|
| 8   | 130521<br>NJC | PMJ  | DRAWING TITLE WAS "BACIC ACTUATOR" |

[www.rotork.com](http://www.rotork.com)

ROTORK CONTROLS LTD  
BATH, BA1 3JQ  
ENGLAND  
Tel:01225-733200

ROTORK CONTROLS INC  
ROCHESTER  
NY 14624, USA  
Tel:585-247-2304

BASIC ACTUATOR -

Drawn by: PJW  
Date : 170402  
Base WD: --  
Job No : --  
MI No : --

| Circuit Diagram No | Issue No |
|--------------------|----------|
| YS00-00            | 8        |