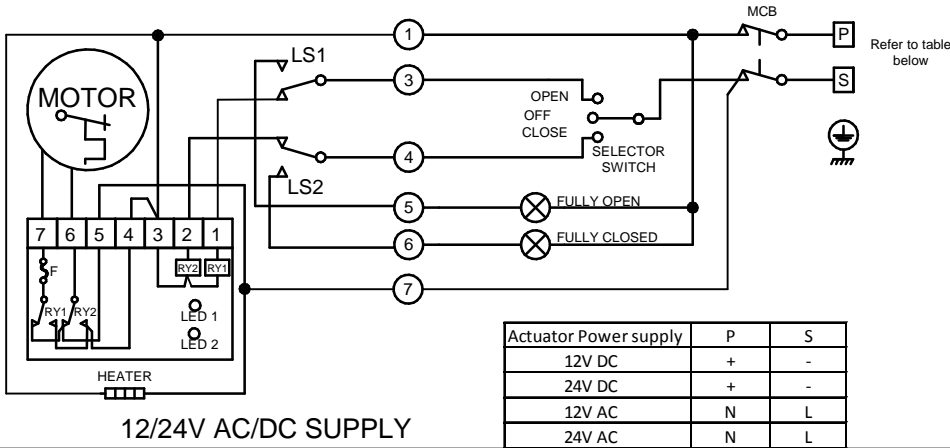


CIRCUIT IS DRAWN FOR A VALVE IN THE MID-TRAVEL

ACTUATOR SHOWN IN MID-TRAVEL

TYPICAL CONTROL - NOT ROTORK SUPPLY

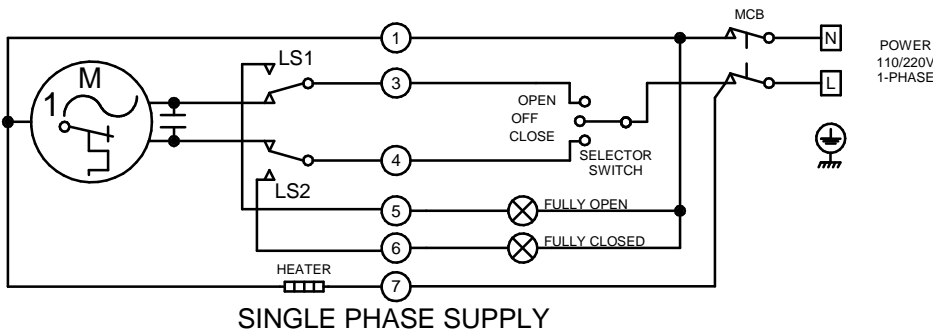


- O - OPEN
- C - CLOSE
- TS - TORQUE SWITCHES
- LS - LIMIT SWITCHES
- MCB - MINITURE CIRCUIT BREAKER
- ACTUATOR TERMINAL

CAUTION
SOLID STATE LOGIC SYSTEMS USING ACTUATOR SWITCH SIGNAL INPUTS MUST BE DESIGNED TO PROVIDE A SWITCHING LOAD OF 1 WATT & 24V MINIMUM WITH A TIME CONSTANT NOT LESS THAN 10ms TO MINIMISE SENSITIVITY TO CONTACT VIBRATION.

ACTUATOR SHOWN IN MID-TRAVEL

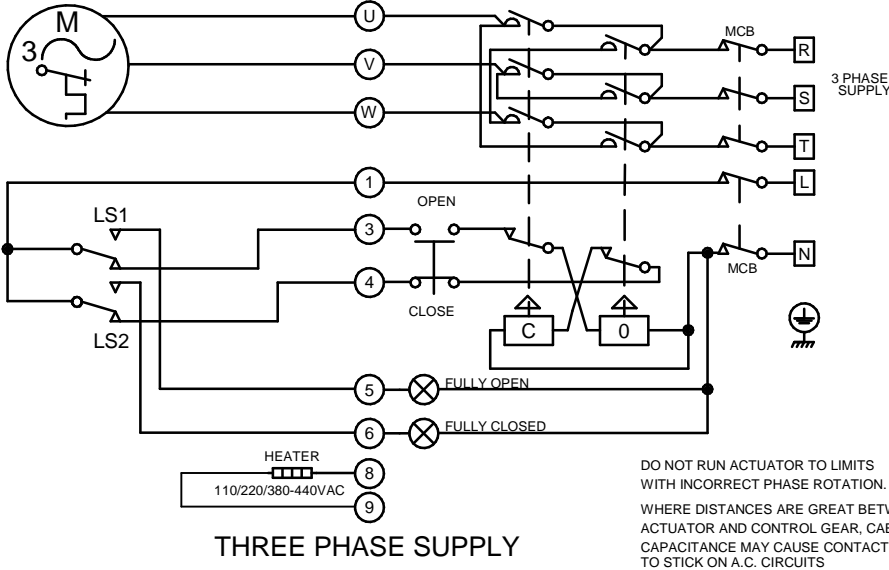
TYPICAL CONTROL - NOT ROTORK SUPPLY



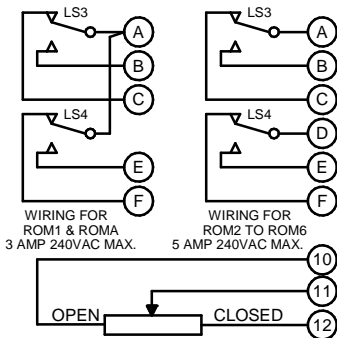
SINGLE PHASE SUPPLY

ACTUATOR SHOWN IN MID-TRAVEL

TYPICAL CONTROL - NOT ROTORK SUPPLY



THREE PHASE SUPPLY



| Iss | Date | Chkd | Revision Details |
|-----|-----------------|------|--|
| 6 | 121217 Kelly | JJ | Correct the description that CIRCUIT IS DRAWN FOR A VALVE IN THE FULLY CLOSED POSITION |

www.rotork.com

| | |
|---|---|
| ROTORK CONTROLS LTD BATH, BA1 3JQ ENGLAND Tel:01225-733200 | ROTORK CONTROLS INC ROCHESTER NY 14624, USA Tel:585-247-2304 |
|---|---|

| | |
|--|--|
| BASIC + HEATER + LS3/LS4 + POT | |
| Drawn by: PJW Date : 170402 Base WD: -- Job No : -- MI No : -- | Circuit Diagram No YS13-00 Issue No 6 |