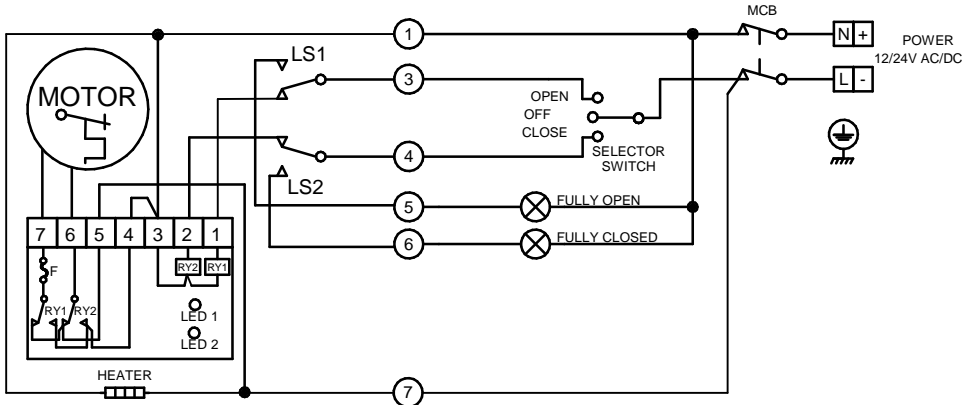


CIRCUIT IS DRAWN FOR A VALVE IN THE FULLY CLOSED POSITION

ACTUATOR SHOWN IN MID-TRAVEL

TYPICAL CONTROL - NOT ROTORK SUPPLY



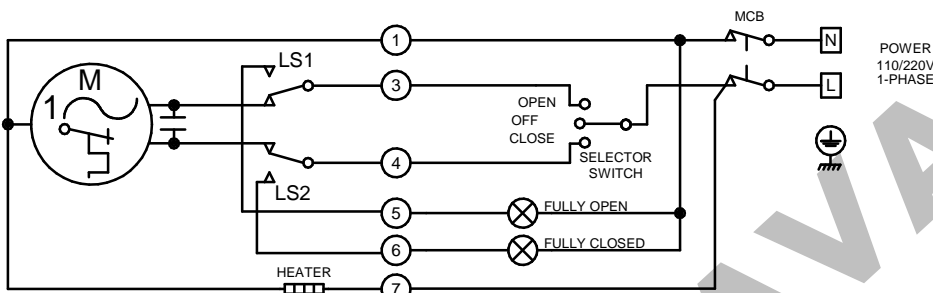
12/24V AC/DC SUPPLY

- O - OPEN
- C - CLOSE
- TS - TORQUE SWITCHES
- LS - LIMIT SWITCHES
- MCB - MINITURE CIRCUIT BREAKER
- ACTUATOR TERMINAL

CAUTION
SOLID STATE LOGIC SYSTEMS USING ACTUATOR SWITCH SIGNAL INPUTS MUST BE DESIGNED TO PROVIDE A SWITCHING LOAD OF 1 WATT & 24V MINIMUM WITH A TIME CONSTANT NOT LESS THAN 10ms TO MINIMISE SENSITIVITY TO CONTACT VIBRATION.

ACTUATOR SHOWN IN MID-TRAVEL

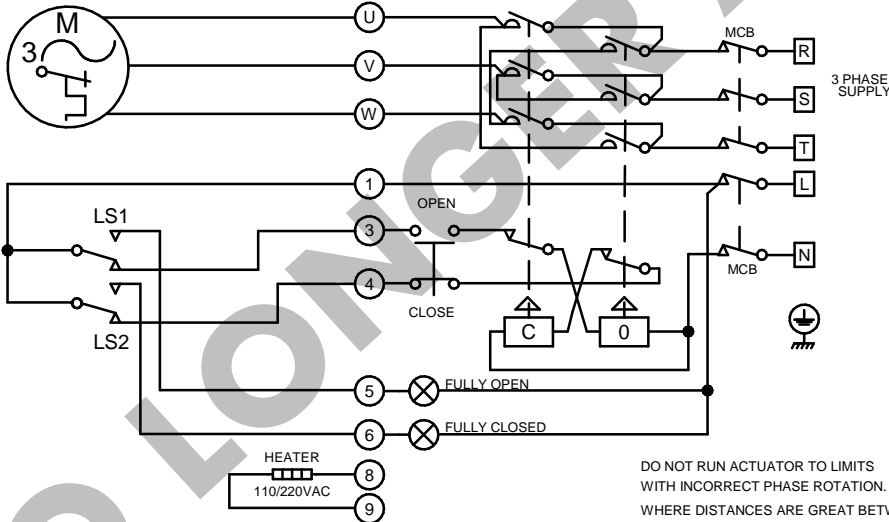
TYPICAL CONTROL - NOT ROTORK SUPPLY



SINGLE PHASE SUPPLY

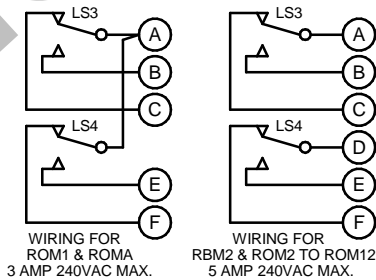
ACTUATOR SHOWN IN MID-TRAVEL

TYPICAL CONTROL - NOT ROTORK SUPPLY



THREE PHASE SUPPLY

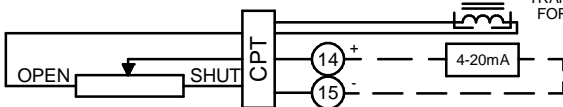
DO NOT RUN ACTUATOR TO LIMITS WITH INCORRECT PHASE ROTATION. WHERE DISTANCES ARE GREAT BETWEEN ACTUATOR AND CONTROL GEAR, CABLE CAPACITANCE MAY CAUSE CONTACTORS TO STICK ON A.C. CIRCUITS



WIRING FOR ROM1 & ROMA
3 AMP 240VAC MAX.

WIRING FOR RBM2 & ROM2 TO ROM12
5 AMP 240VAC MAX.

POWER SUPPLY
TRANSFORMER FITTED FOR 110/220 SUPPLIES.



Iss	Date	Chkd	Revision Details
4	050713 HYE	PJW	This WD will be no longer available, just add the water mark, no content changed.

www.rotork.com

ROTORK CONTROLS LTD
BATH, BA1 3JQ
ENGLAND
Tel:01225-733200

ROTORK CONTROLS INC
ROCHESTER
NY 14624, USA
Tel:585-247-2304

BASIC + HEATER + LS3/LS4 + POT & CPT

Drawn by: PJW
Date : 181004
Base WD: --
Job No : --
MI No : --

Circuit Diagram No
YS13-10
Issue No
4