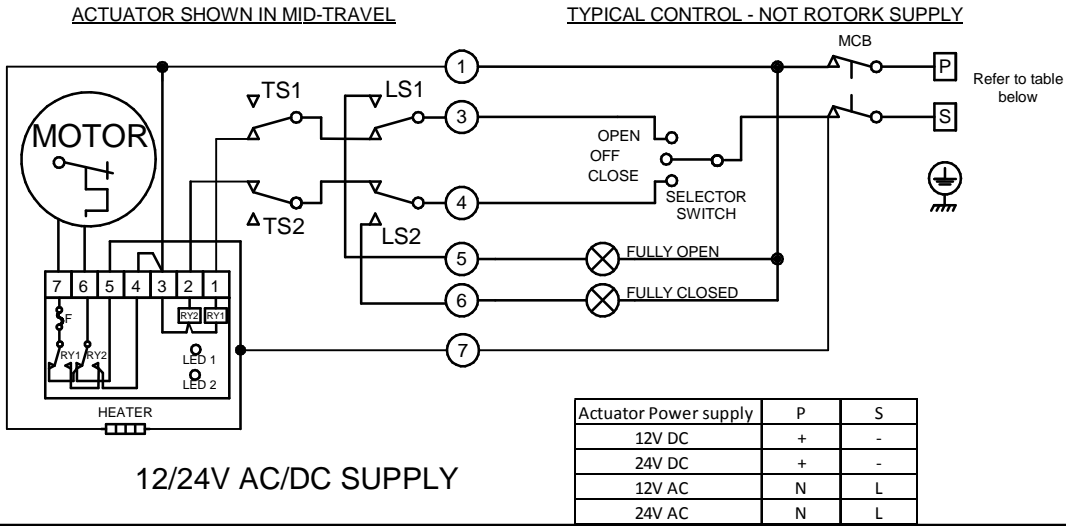
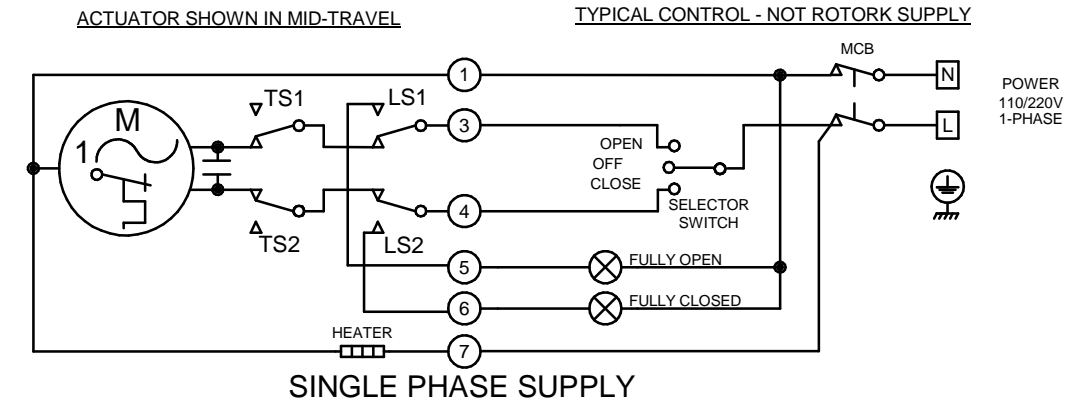


CIRCUIT IS DRAWN FOR A VALVE IN THE MID-TRAVEL

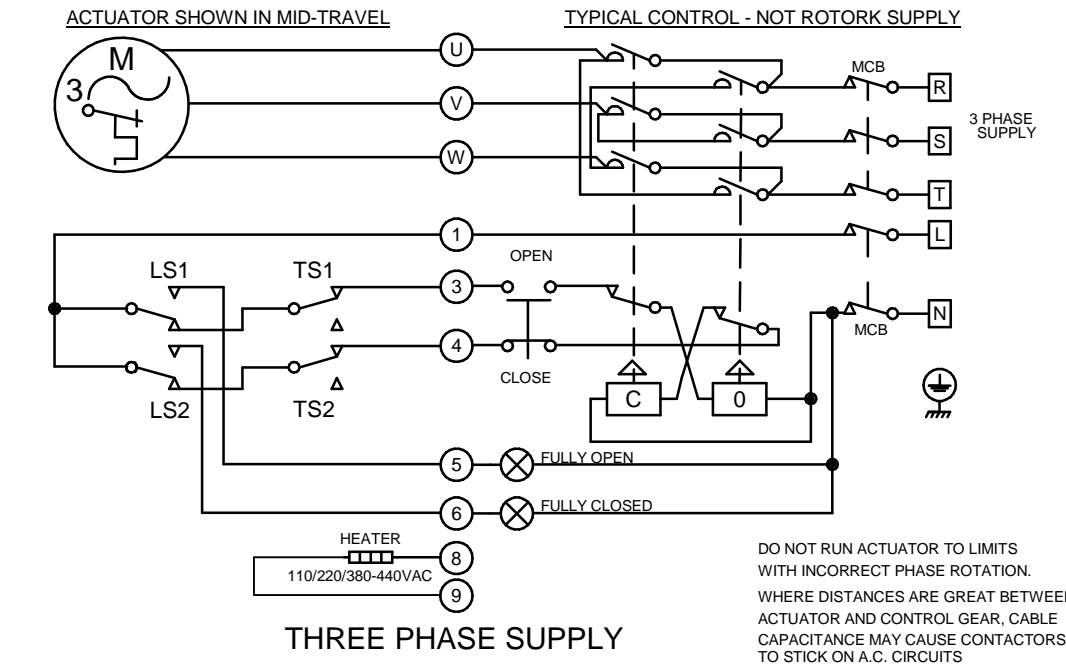


- O - OPEN
- C - CLOSE
- TS - TORQUE SWITCHES
- LS - LIMIT SWITCHES
- MCB - MINITURE CIRCUIT BREAKER
- (-) ACTUATOR TERMINAL

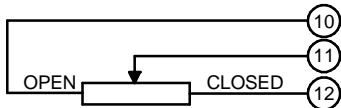
**CAUTION**  
SOLID STATE LOGIC SYSTEMS USING ACTUATOR SWITCH SIGNAL INPUTS MUST BE DESIGNED TO PROVIDE A SWITCHING LOAD OF 1 WATT & 24V MINIMUM WITH A TIME CONSTANT NOT LESS THAN 10ms TO MINIMISE SENSITIVITY TO CONTACT VIBRATION.



SINGLE PHASE SUPPLY



THREE PHASE SUPPLY



Iss	Date	Chkd	Revision Details
6	121217 Kelly	JJ	Correct the description that CIRCUIT IS DRAWN FOR A VALVE IN THE FULLY CLOSED POSITION

**www.rotork.com**

ROTORK CONTROLS LTD BATH, BA1 3JQ ENGLAND Tel:01225-733200	ROTORK CONTROLS INC ROCHESTER NY 14624, USA Tel:585-247-2304
---	---

BASIC + HEATER + TS1/TS2 + POT

Drawn by: PJW Date : 170402 Base WD: -- Job No : -- MI No : --	Circuit Diagram No <b>YS32-00</b>	Issue No <b>6</b>
--	--------------------------------------	----------------------