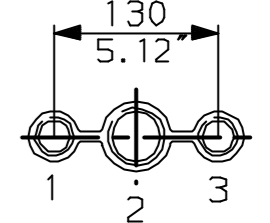


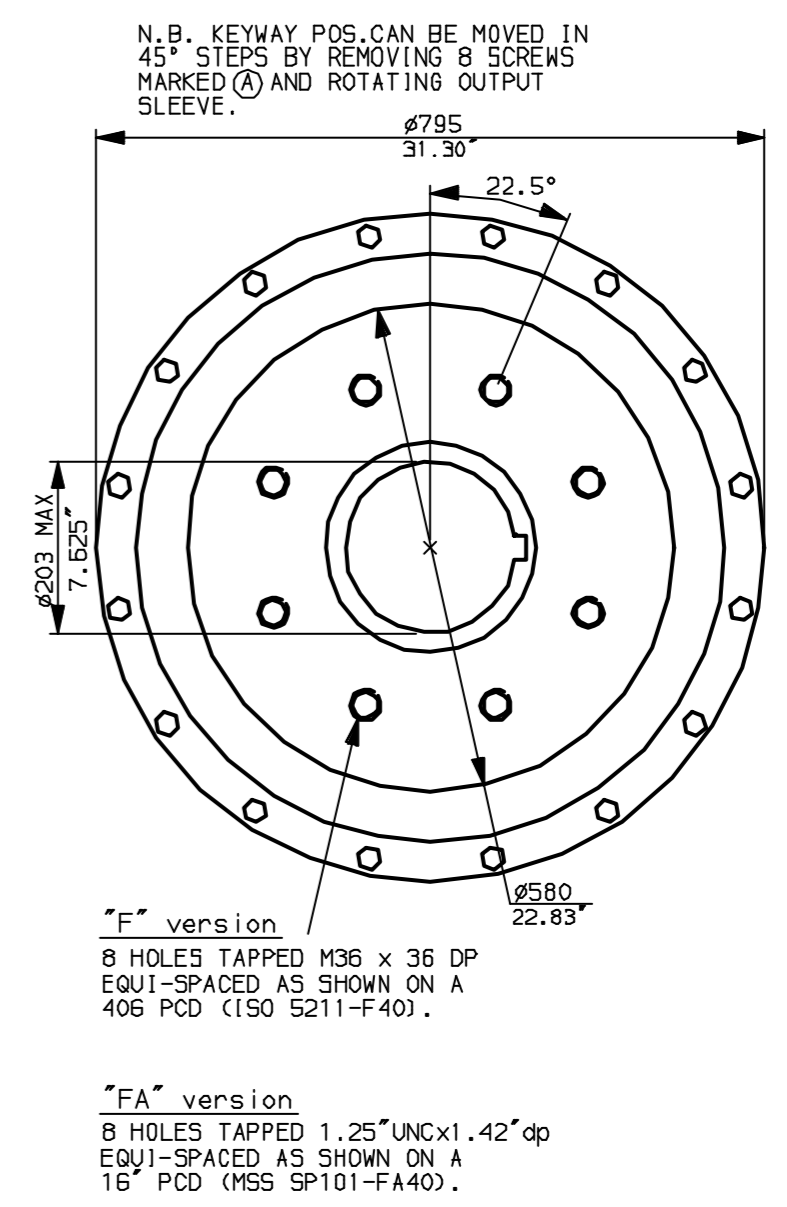
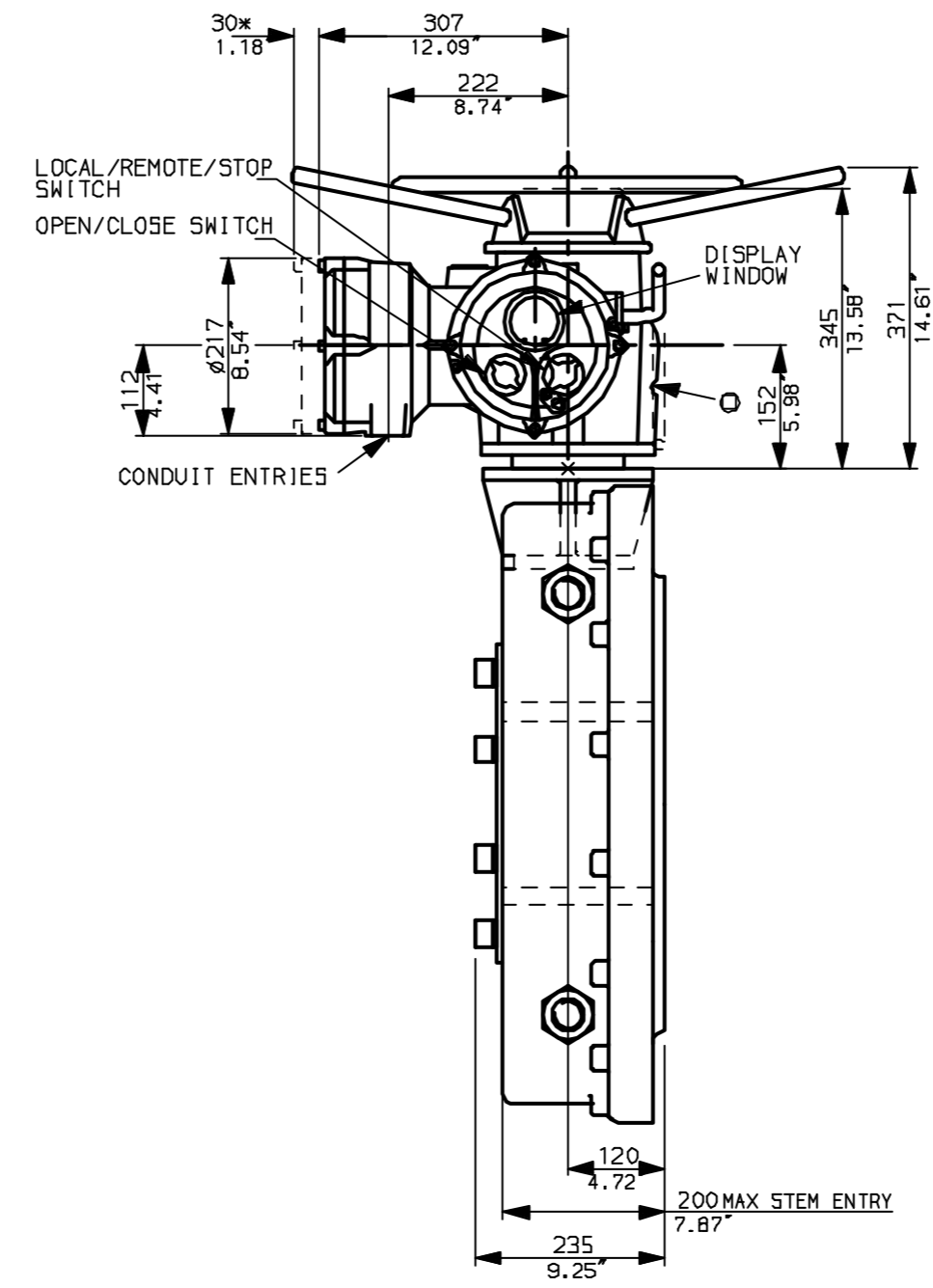
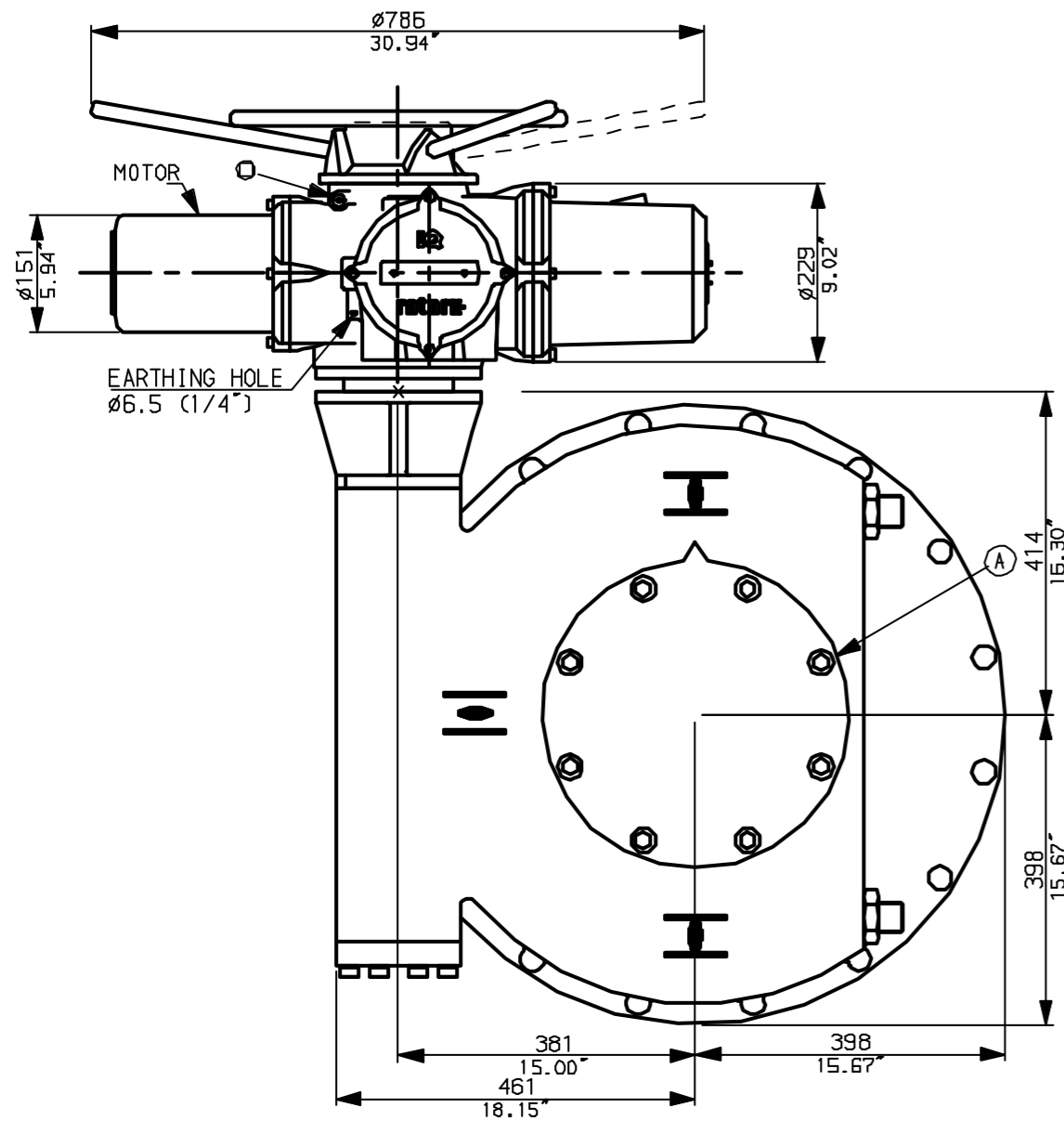
NOTES:

- DIMENSIONS WITH '*' INDICATE COVER REMOVAL ALLOWANCE
- NETT WEIGHT = 485kg (1067lbs)
- = OIL FILLER/DRAIN PLUG
- THE INTERFACE PROVIDED FOR MOUNTING THE ACTUATOR OR SECOND STAGE GEARBOX ONTO THE VALVE SHOULD CONFORM TO GOOD ENGINEERING PRACTICES, ENSURING ADEQUATELY TOLERANCED LIMITS FOR PARALLELISM, PERPENDICULARITY AND CONCENTRICITY.

CONDUIT ENTRIES (N.T.S)



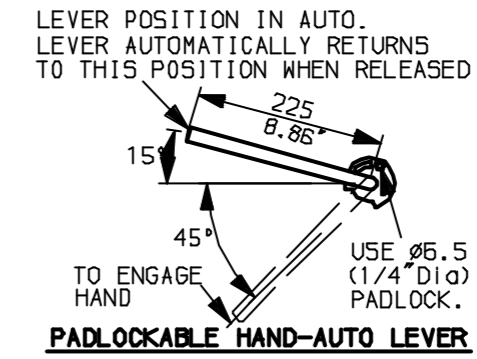
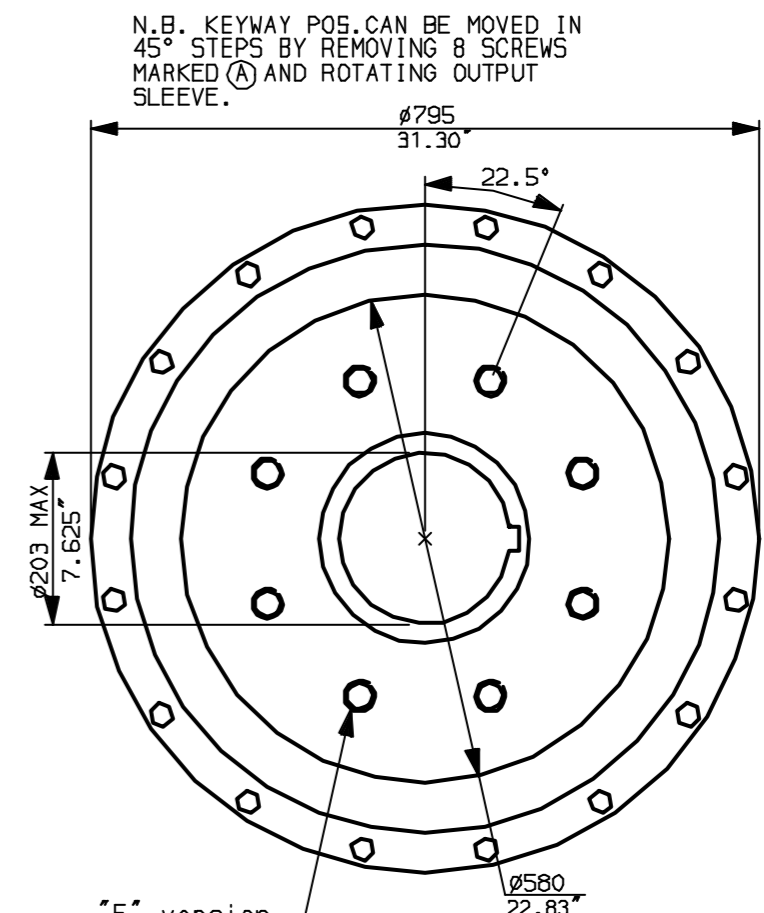
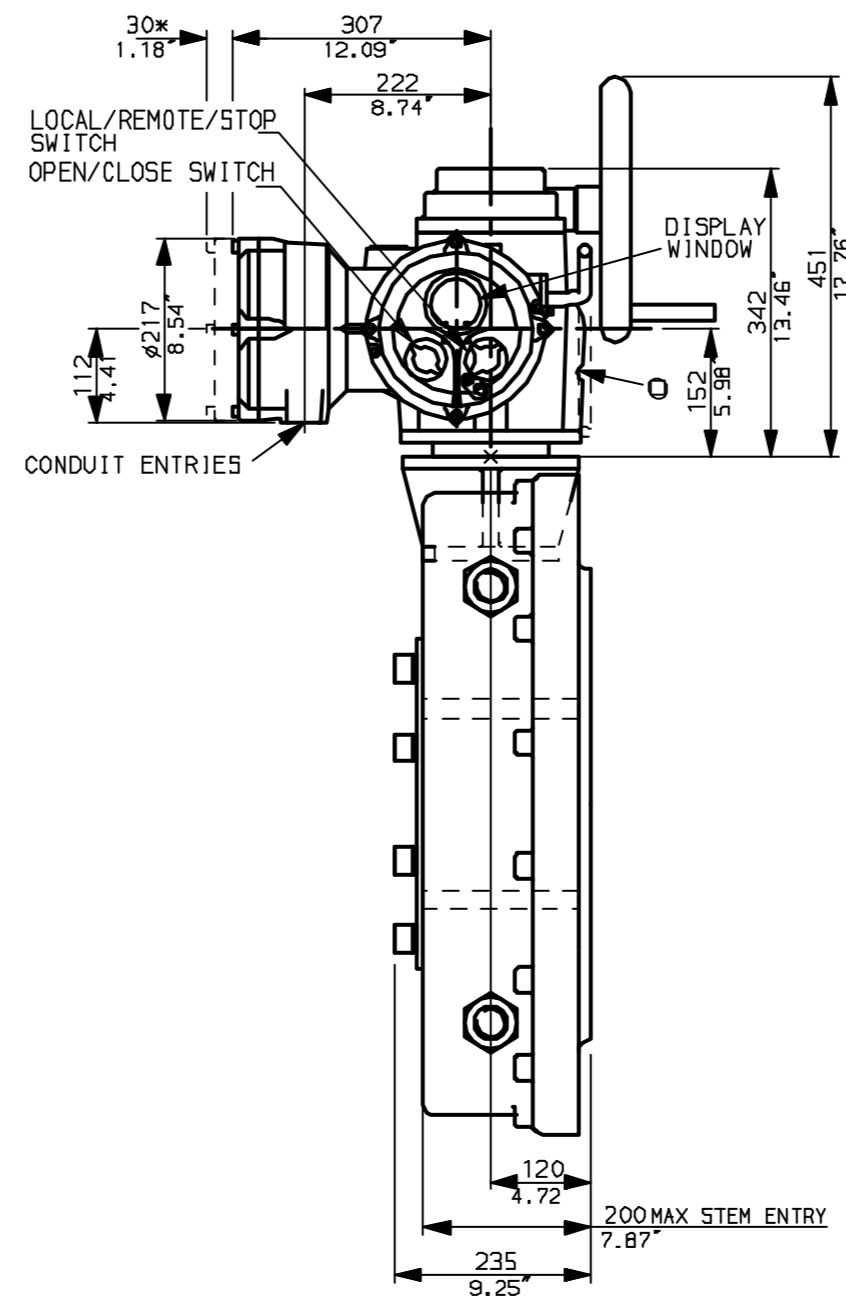
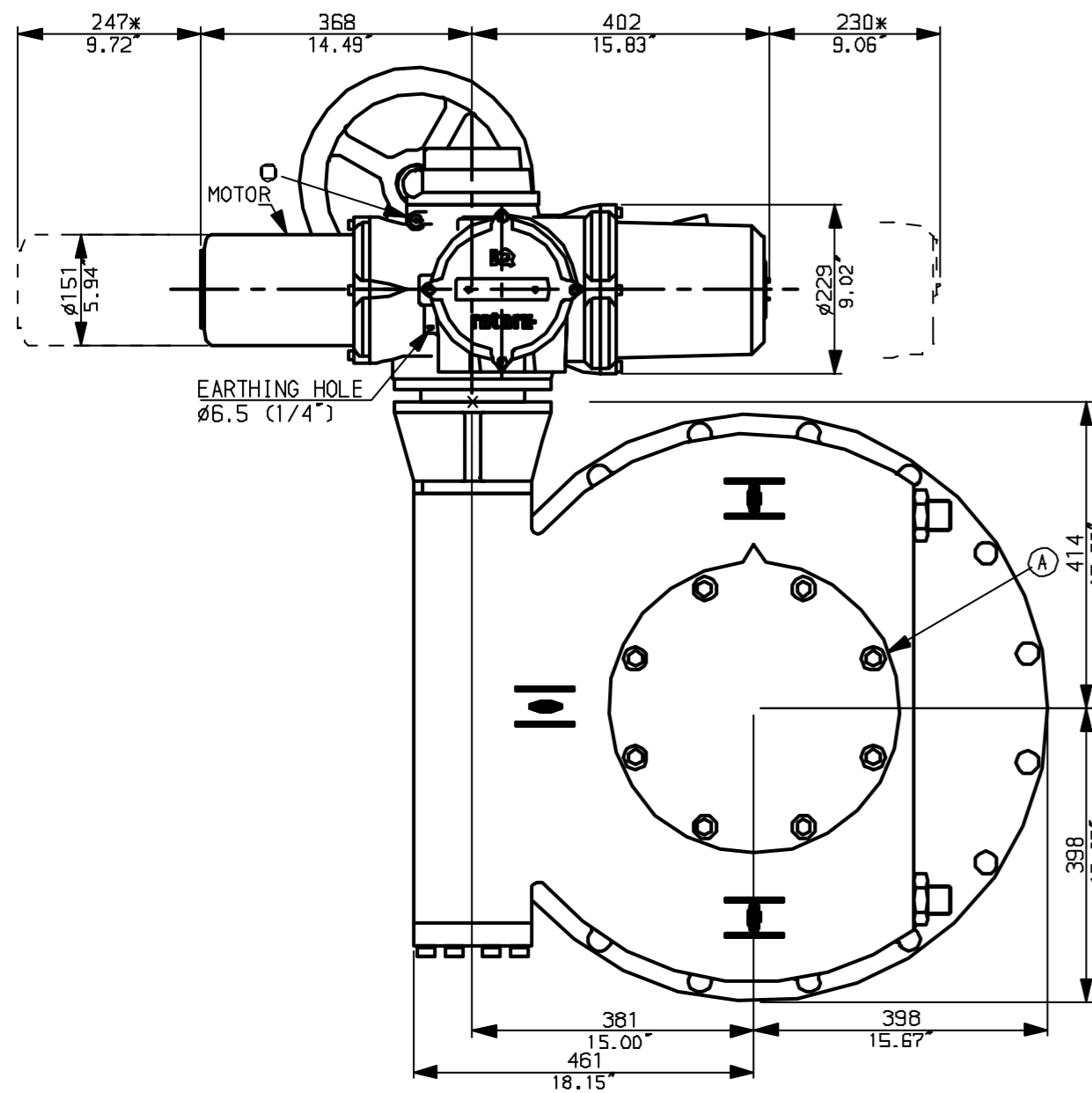
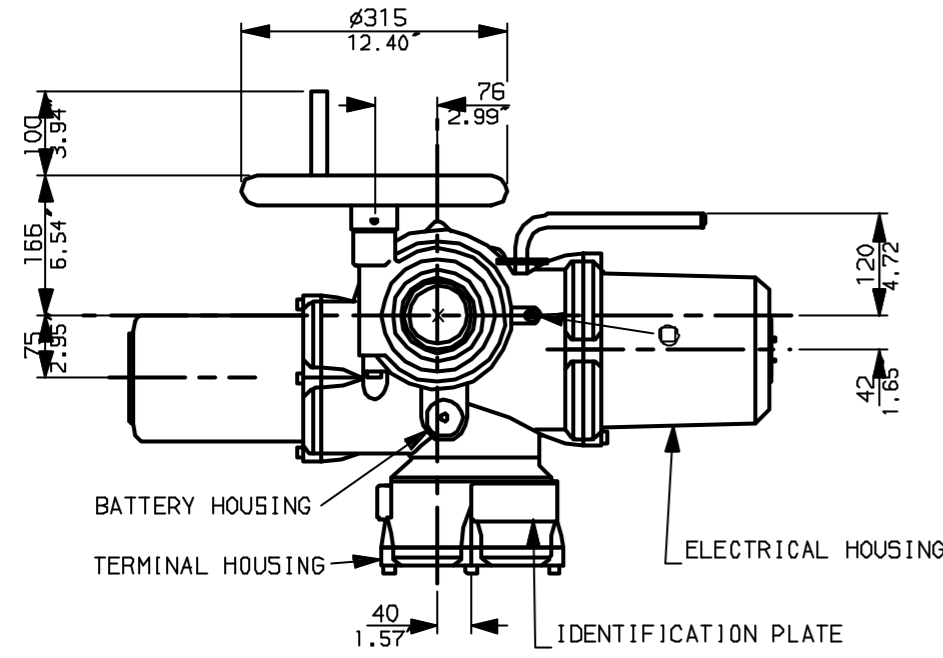
Nos.1 & 3 TAPPED 1" NPT
 No.2 TAPPED 1 1/2" NPT
 STD ALTERNATIVES IF SPECIFIED
 2 X M25, 1 X M40
 2 X PG16, 1 X PG29



Rotork Controls Ltd. Bath England, BA1 3JQ. (Phone 01225-733200)	Title IQM35, THW, MOW11, STANDARD DIMENSIONAL DATA
Rotork Controls Inc. Rochester, NY 14624 (Phone 585-328-1550)	Drawn CAD Checked PRE Ref Data Sheet
Date April 04 Job No IQ35THW_MOW11	

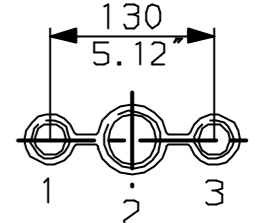
01 Issue	First Issue.
Scale	1:9 THIRD ANGLE PROJECTION
Drawing Number	IQ35THW_MOW11

G
F
E
D
C
B
A



NOTES:
 * DIMENSIONS WITH '*' INDICATE COVER REMOVAL ALLOWANCE
 : NETT WEIGHT = 485kg (1067lbs)
 : ϕ = OIL FILLER/DRAIN PLUG
 : THE INTERFACE PROVIDED FOR MOUNTING THE ACTUATOR OR SECOND STAGE GEARBOX ONTO THE VALVE SHOULD CONFORM TO GOOD ENGINEERING PRACTICES, ENSURING ADEQUATELY TOLERANCED LIMITS FOR PARALLELISM, PERPENDICULARITY AND CONCENTRICITY.

CONDUIT ENTRIES (N.T.S)



Nos.1 & 3 TAPPED 1" NPT
 No.2 TAPPED 1 1/2" NPT
 STD ALTERNATIVES IF SPECIFIED
 2 X M25, 1 X M40
 2 X PG16, 1 X PG29



Rotork Controls Ltd.
 Bath England, BA1 3JQ.
 (Phone 01225-733200)
 Rotork Controls Inc.
 Rochester, NY 14624
 (Phone 585-328-1550)

Title IQM35, SHW, MOW11,
 STANDARD DIMENSIONAL DATA
 Drawn CAD Checked PRE Ref Data Sheet
 Date April 04 Job No IQ35SHW_MOW11

01	First Issue.
Issue	
Scale	1:9 THIRD ANGLE PROJECTION
Drawing Number	IQ35SHW_MOW11

1 | 2 | 3 | 4 | 5 | 6 | 7 | 8 | 9 | 10