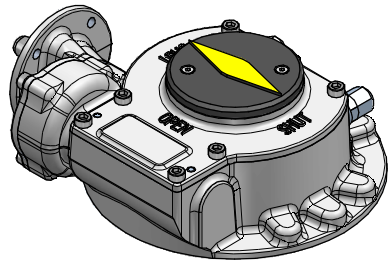
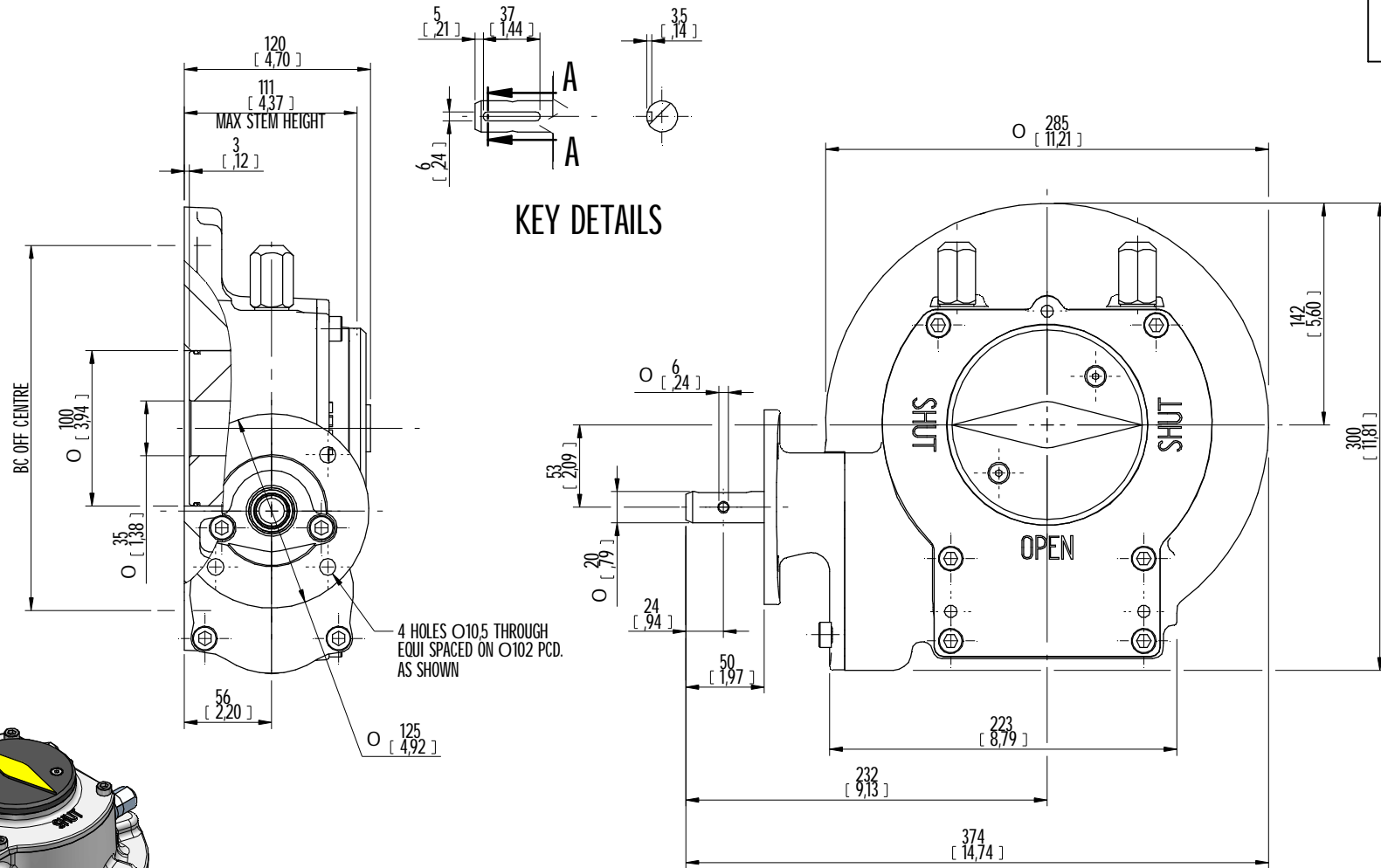
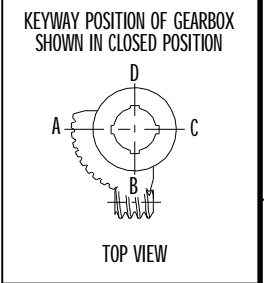


DESCRIPTION				MOUNTING HOLES - BOLT CIRCLE (OFF CENTRES)			BORE: STEM ACCEPTANCE WITH KEYWAY IN ACCORDING WITH STANDARD			TORQUE			
RATIO	TURNS TO CLOSE	TRAVEL (1/4 TURN)	WEIGHT	NR of HOLES	MIN PCD - ØHOLE	MAX PCD + ØHOLE	ACCORDING TO ISO 5211 / MSS SP-101	MIN	MAX	STANDARD	OUTPUT	INPUT	MA
109:1	27	-5° TO 95°	31 kg	4	Ø 145 mm	Ø 185 mm	F16	Ø35 mm	Ø90 mm	ISO 773 A	4500 Nm	136 Nm	33 ± 15%
				8	Ø188 mm	Ø270 mm	F25						
			68 lbs	4	Ø 5.709 inch	Ø 7.283 inch	FA16						
				8	Ø7.40 inch	Ø10.62 inch	FA25						

AS PART OF CONTINUOUS PRODUCT DEVELOPMENT, ALL DETAILS SUBJECT TO CHANGE WITHOUT PRIOR NOTICE. FOR UP TO DATE DETAILS PLEASE VISIT [www.rotork.com](http://www.rotork.com)



ISOMETRIC VIEW  
1:5

	Document type <b>DETAIL DRAWING</b>		Title <b>E2000          E2000 G-TYPE ASSEMBLY F25 BASE, RH PROJECTION          WITH E-FLANGE</b>	
	Dimensions in mm Scale 1:3		Drawing Number <b>E2000G RH LB</b>	
Created	M R	14-12-2012	Drawing Number <b>E2000G RH LB</b>	
Checked	P LINE	28-2-2013	Rev <b>A</b>	
Approved	-	DD-1111-YYYY	Sheet 1 of 3	Size A3

© This drawing is confidential and is the property of Rotork Gears and must not be reproduced either wholly or partly. All rights in respect of patents, designs and copyrights are reserved. ©2012

LOSSER - NETHERLANDS  
[www.rotork.com](http://www.rotork.com)

Rev	CN	Revised	Approved	Date	Change Description
00				DD-1111-YYYY	FIRST ISSUE

Rev 01