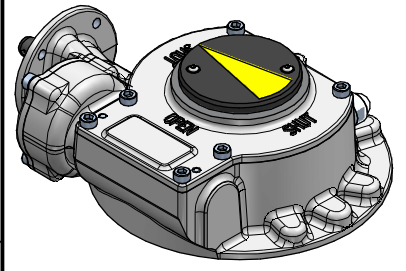
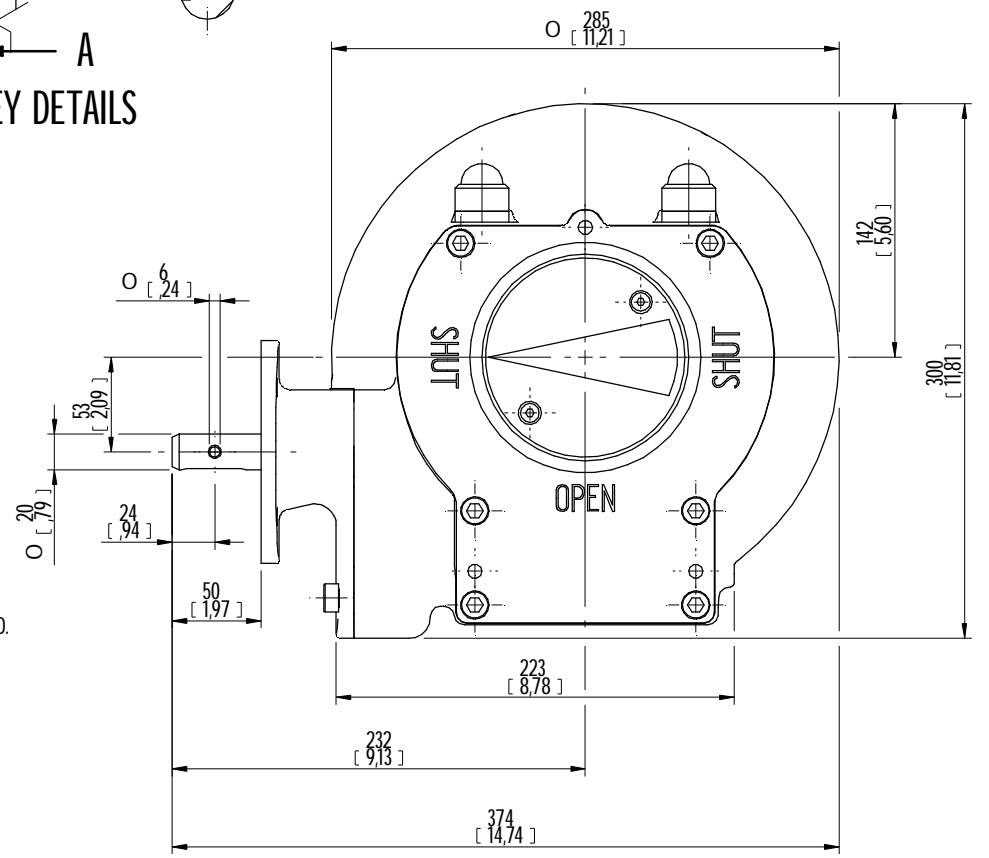
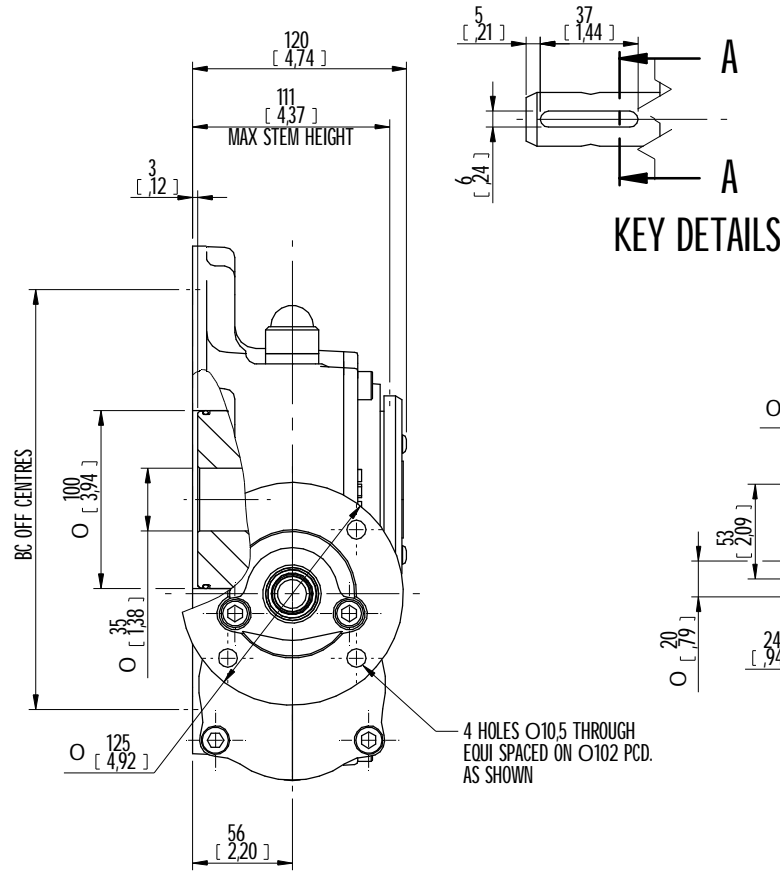
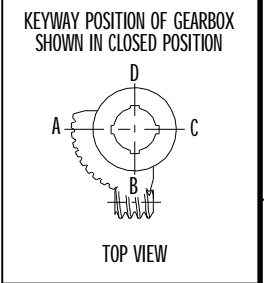


DESCRIPTION				MOUNTING HOLES - BOLT CIRCLE (OFF CENTRES)			BORE: STEM ACCEPTANCE WITH KEYWAY IN ACCORDING WITH STANDARD			TORQUE			
RATIO	TURNS TO CLOSE	TRAVEL (1/4 TURN)	WEIGHT	NR of HOLES	MIN PCD - ØHOLE	MAX PCD + ØHOLE	ACCORDING TO ISO 5211 / MSS SP-101	MIN	MAX	STANDARD	OUTPUT	INPUT	MA
109:1	27	-5° to 95°	28 kg	4	Ø 145 mm	Ø 185 mm	F16	Ø35 mm	Ø90 mm	ISO 773 A	4500 Nm	136 Nm	33 ± 15%
				8	Ø188 mm	Ø270 mm	F25						
			62 lbs	4	Ø 5.709 inch	Ø 7.283 inch	FA16						
				8	Ø7.40 inch	Ø10.62 inch	FA25						

AS PART OF CONTINUOUS PRODUCT DEVELOPMENT, ALL DETAILS SUBJECT TO CHANGE WITHOUT PRIOR NOTICE. FOR UP TO DATE DETAILS PLEASE VISIT www.rotork.com



ISOMETRIC VIEW
1:5

	Document type DETAIL DRAWING		Title E2000 E2000 STANDARD ASSEMBLY F25 BASE, RH PROJECTION WITH E-FLANGE	
	Dimensions in mm Scale 1:3		Drawing Number E2000 RH LB	
Created VIGNESH G	7-1-2013	Sheet 1 of 3		Rev A
Checked P LINE	12-2-2013	Size A3		
Approved DD-1MM1-YYYY				

© This drawing is confidential and is the property of Rotork Gears and must not be reproduced either wholly or partly. All rights in respect of patents, designs and copyrights are reserved. ©2012

LOSSER - NETHERLANDS
www.rotork.com

Rev 01