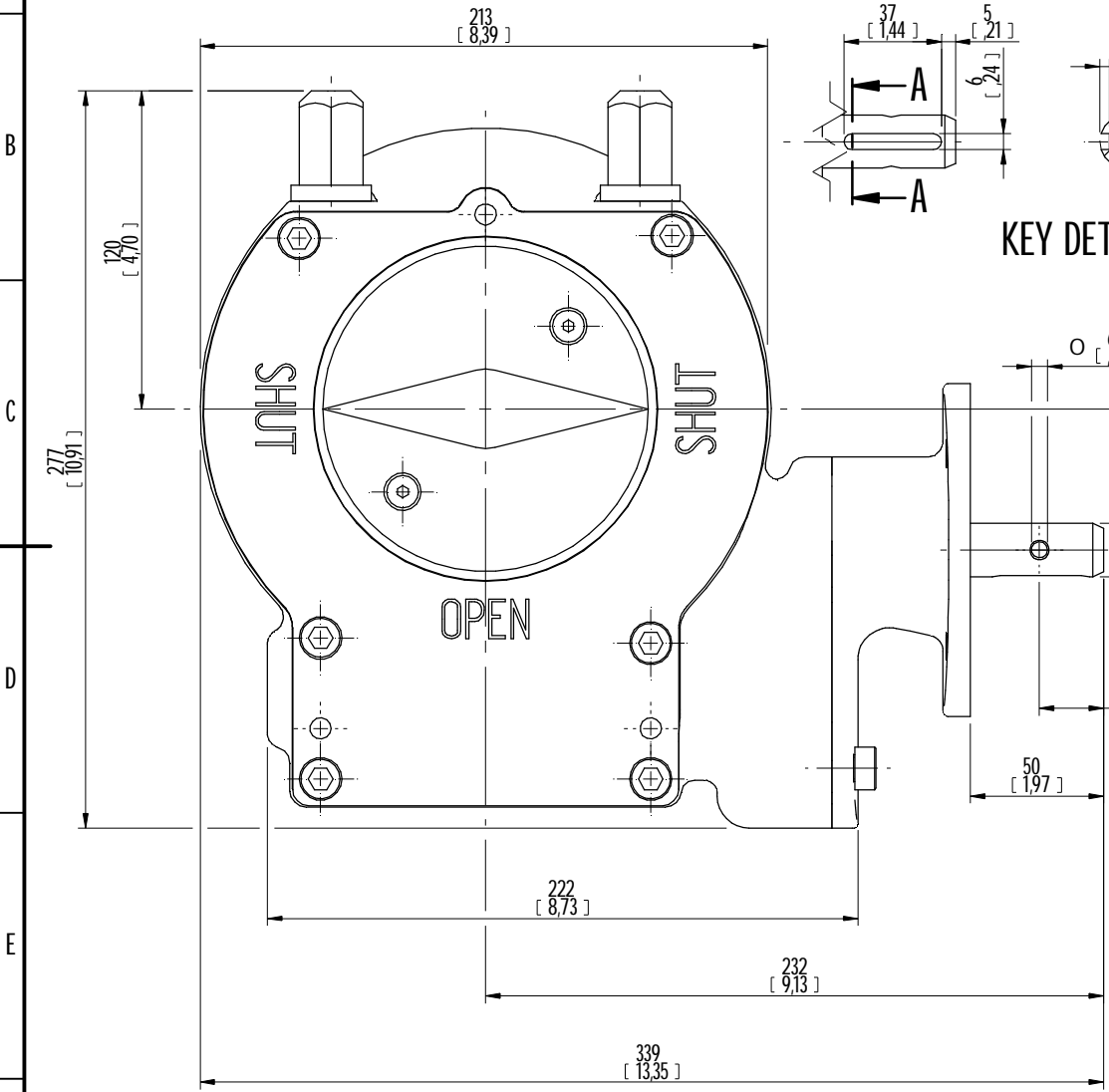
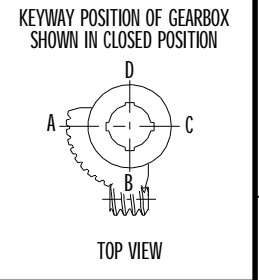
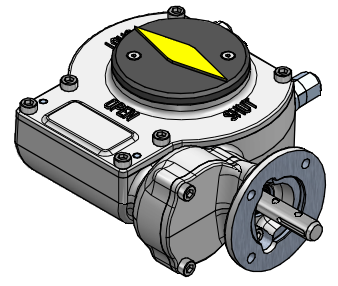
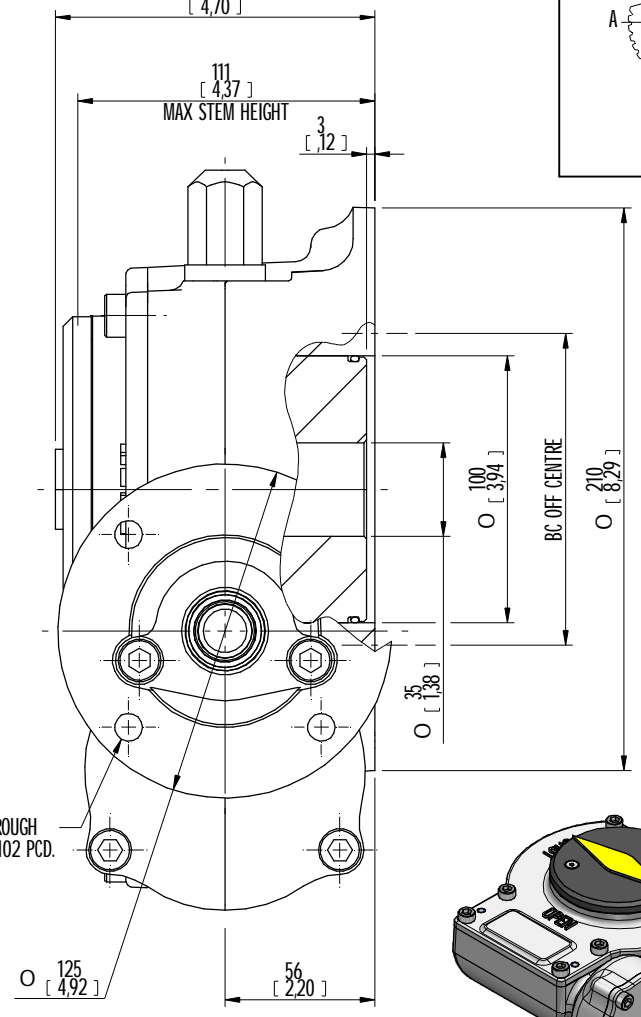


DESCRIPTION		MOUNTING HOLES - BOLT CIRCLE (OFF CENTRES)				BORE: STEM ACCEPTANCE WITH KEYWAY IN ACCORDING WITH STANDARD			TORQUE				
RATIO	TURNS TO CLOSE	TRAVEL (1/4 TURN)	WEIGHT	NR of HOLES	MIN PCD - ØHOLE	MAX PCD + ØHOLE	ACCORDING TO ISO 5211 / MSS SP-101	MIN	MAX	STANDARD	OUTPUT	INPUT	MA
109:1	27	-5° TO 95°	28 kg	4	Ø104 mm	Ø195 mm	F12 - F14 - F16	Ø35 mm	Ø90 mm	ISO 773 A	4500 Nm	136 Nm	33 ± 15%
				8	N/A	N/A	N/A						
			61 lbs	4	Ø4.09 inch	Ø7.67 inch	FA12 - FA14 - FA16	Ø1.38 inch	Ø2.76 inch	ANSI B17.1	39,828 lbf.in	1204 lbf.in	
				8	N/A	N/A	N/A						

AS PART OF CONTINUOUS PRODUCT DEVELOPMENT, ALL DETAILS SUBJECT TO CHANGE WITHOUT PRIOR NOTICE. FOR UP TO DATE DETAILS PLEASE VISIT www.rotork.com



KEY DETAILS



ISOMETRIC VIEW
1:5

OO	Rev	CN	Revised	Approved	DD-MMM-YYYY	FIRST ISSUE	Date	Change Description

 LOSSER - NETHERLANDS www.rotork.com	Document type: DETAIL DRAWING Dimensions in mm Scale: 1:2	Title: E2000 E2000 W-TYPE ASSEMBLY F16 BASE, LH PROJECTION WITH E-FLANGE	
		Created: M R 18-12-2012	Drawing Number: E2000W LH
Checked: P LINE 28-2-2013	Approved: - DD-MMM-YYYY	Sheet: 1 of 3	Size: A3

Rev 01