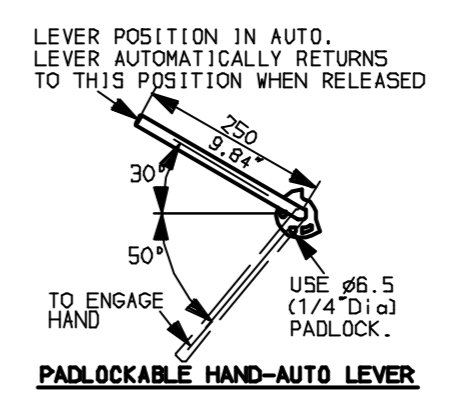
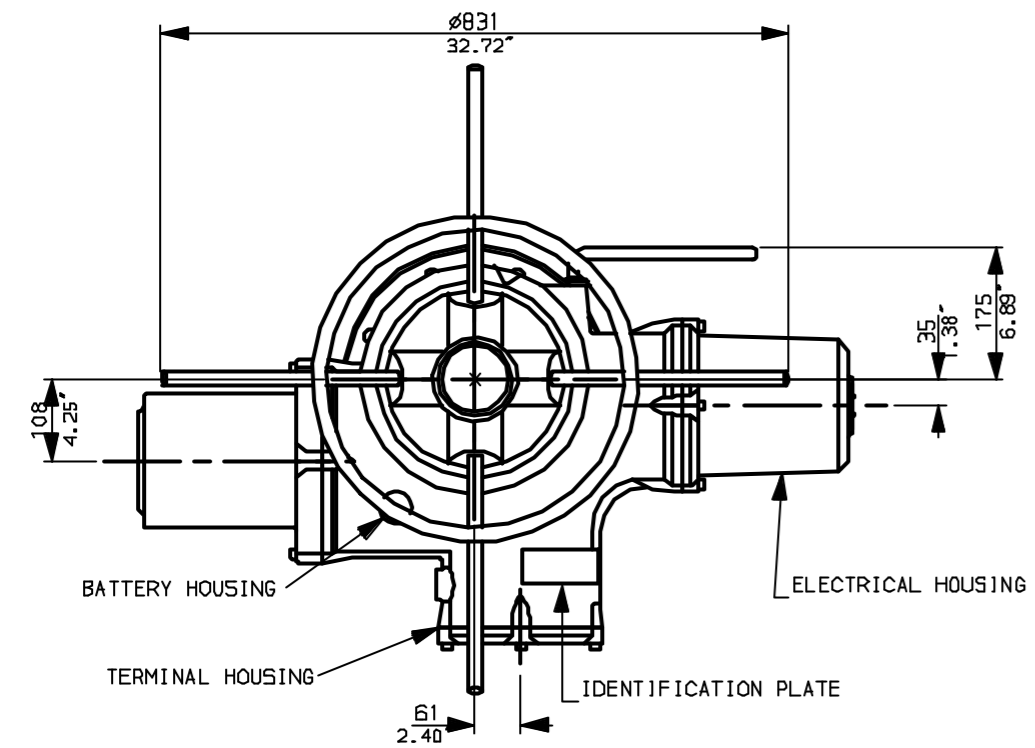
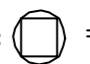
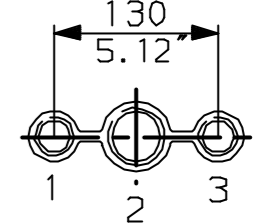


G  
F  
E  
D  
C  
B  
A

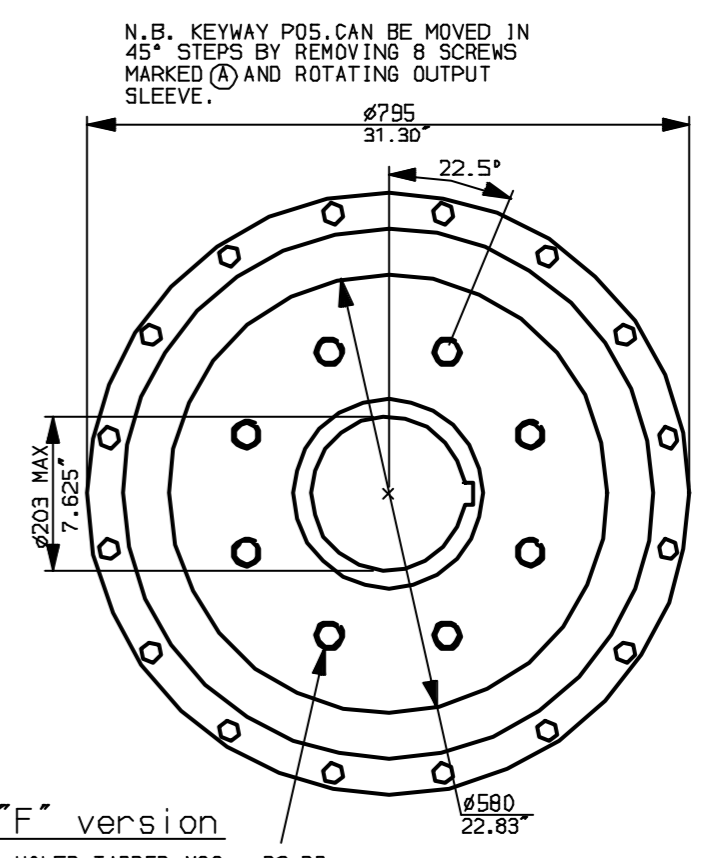
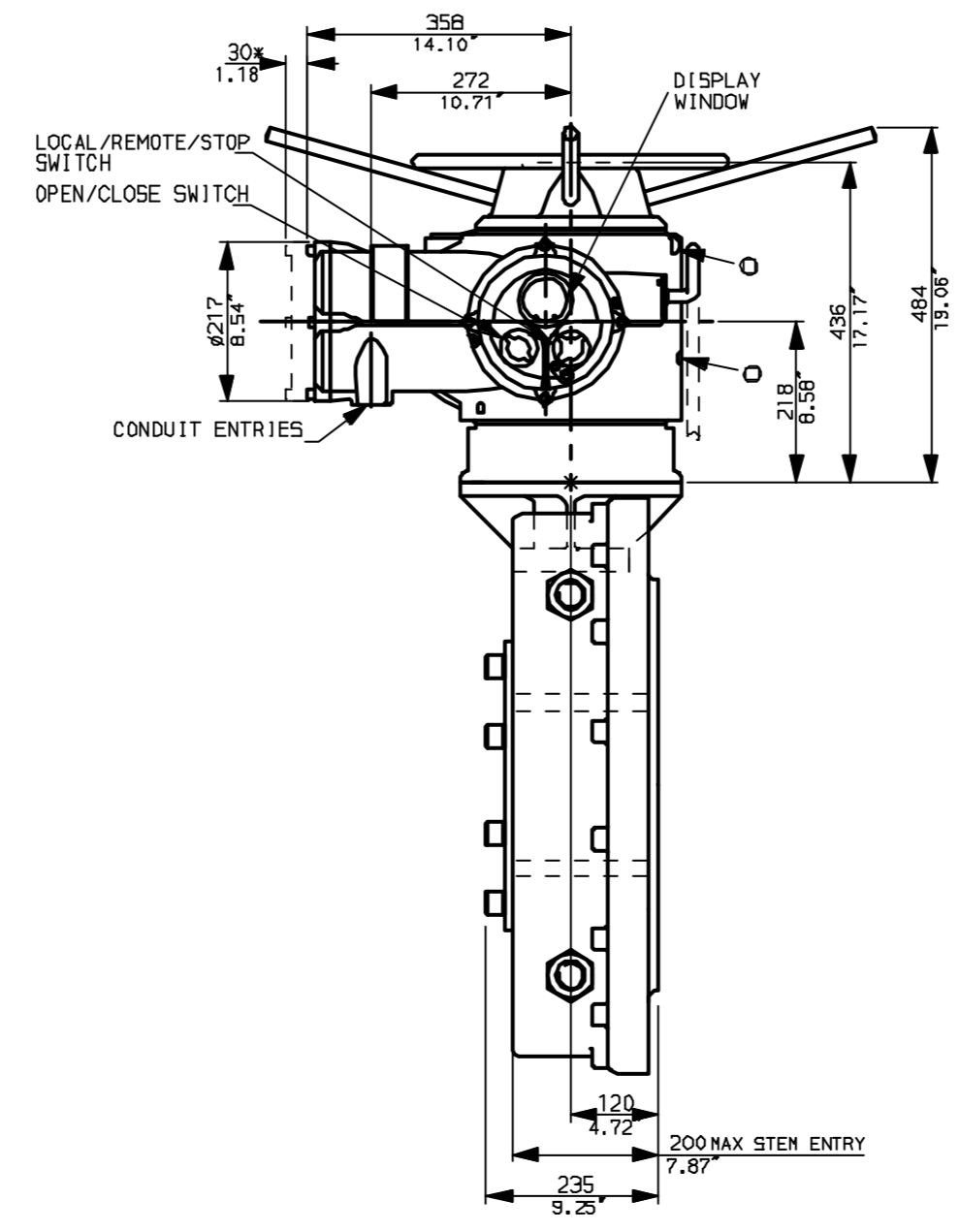
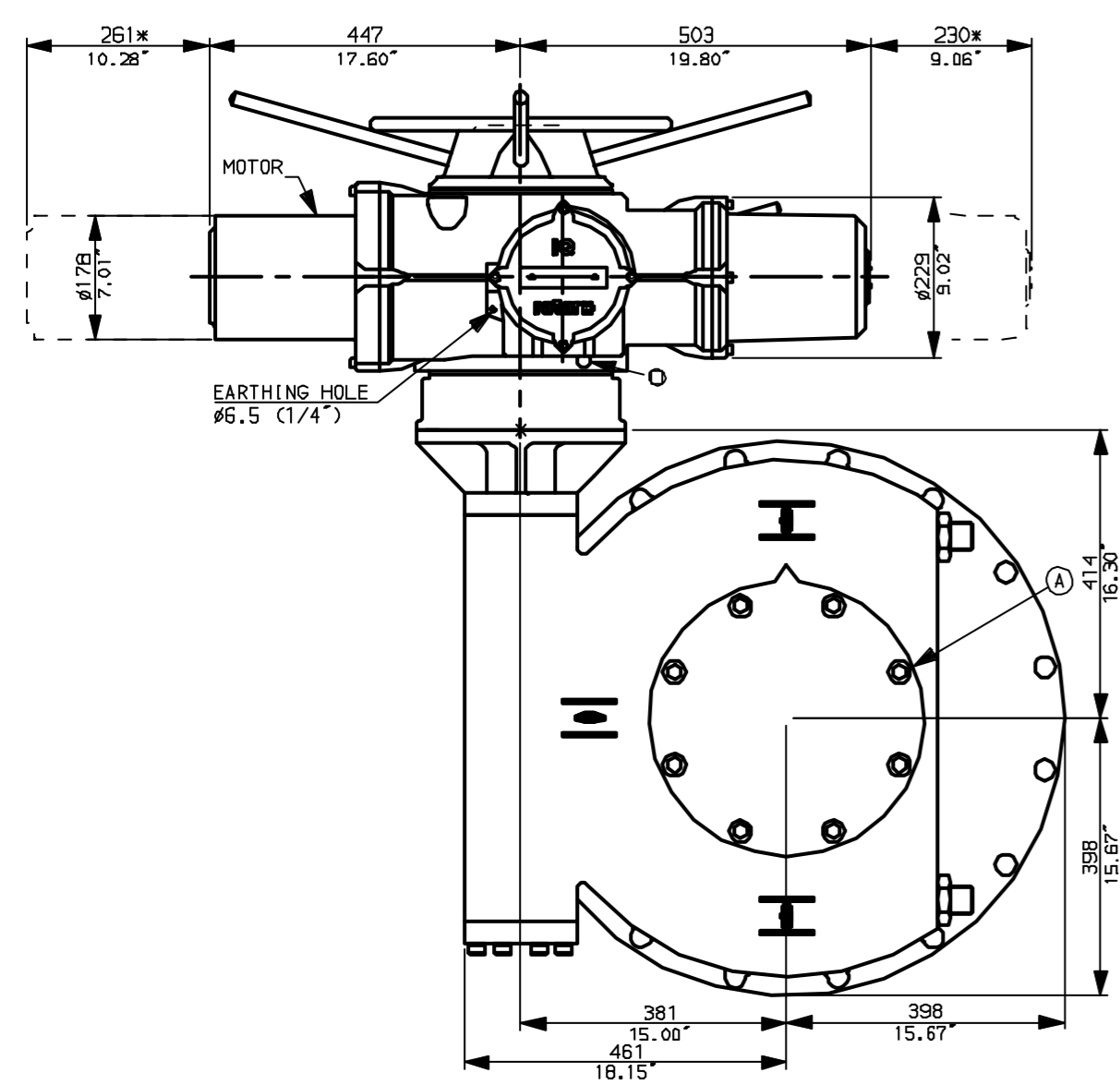


NOTES:  
 : DIMENSIONS WITH '\*' INDICATE COVER REMOVAL ALLOWANCE  
 : NETT WEIGHT = 610kg (1342lbs)  
 :  = OIL FILLER/DRAIN PLUG  
 : THE INTERFACE PROVIDED FOR MOUNTING THE ACTUATOR OR SECOND STAGE GEARBOX ONTO THE VALVE SHOULD CONFORM TO GOOD ENGINEERING PRACTICES, ENSURING ADEQUATELY TOLERANCED LIMITS FOR PARALLELISM, PERPENDICULARITY AND CONCENTRICITY.

**CONDUIT ENTRIES** (N.T.S)



Nos.1 & 3 TAPPED 1" NPT  
 No.2 TAPPED 1 1/2" NPT  
 STD ALTERNATIVES IF SPECIFIED  
 2 X M25, 1 X M40  
 2 X PG16, 1 X PG29



"F" version  
 8 HOLES TAPPED M36 x 36 DP  
 EQUI-SPACED AS SHOWN ON A  
 406 PCD (150 5211-F40).

"FA" version  
 8 HOLES TAPPED 1.25" UNC x 1.42" dp  
 EQUI-SPACED AS SHOWN ON A  
 16" PCD (M55 5P101-FA40).

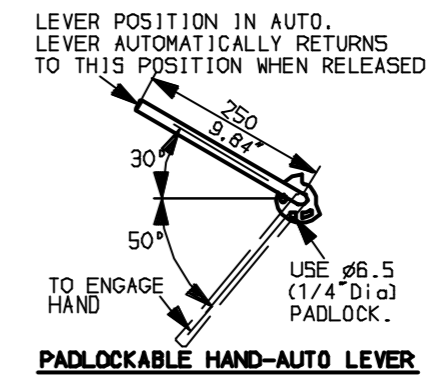
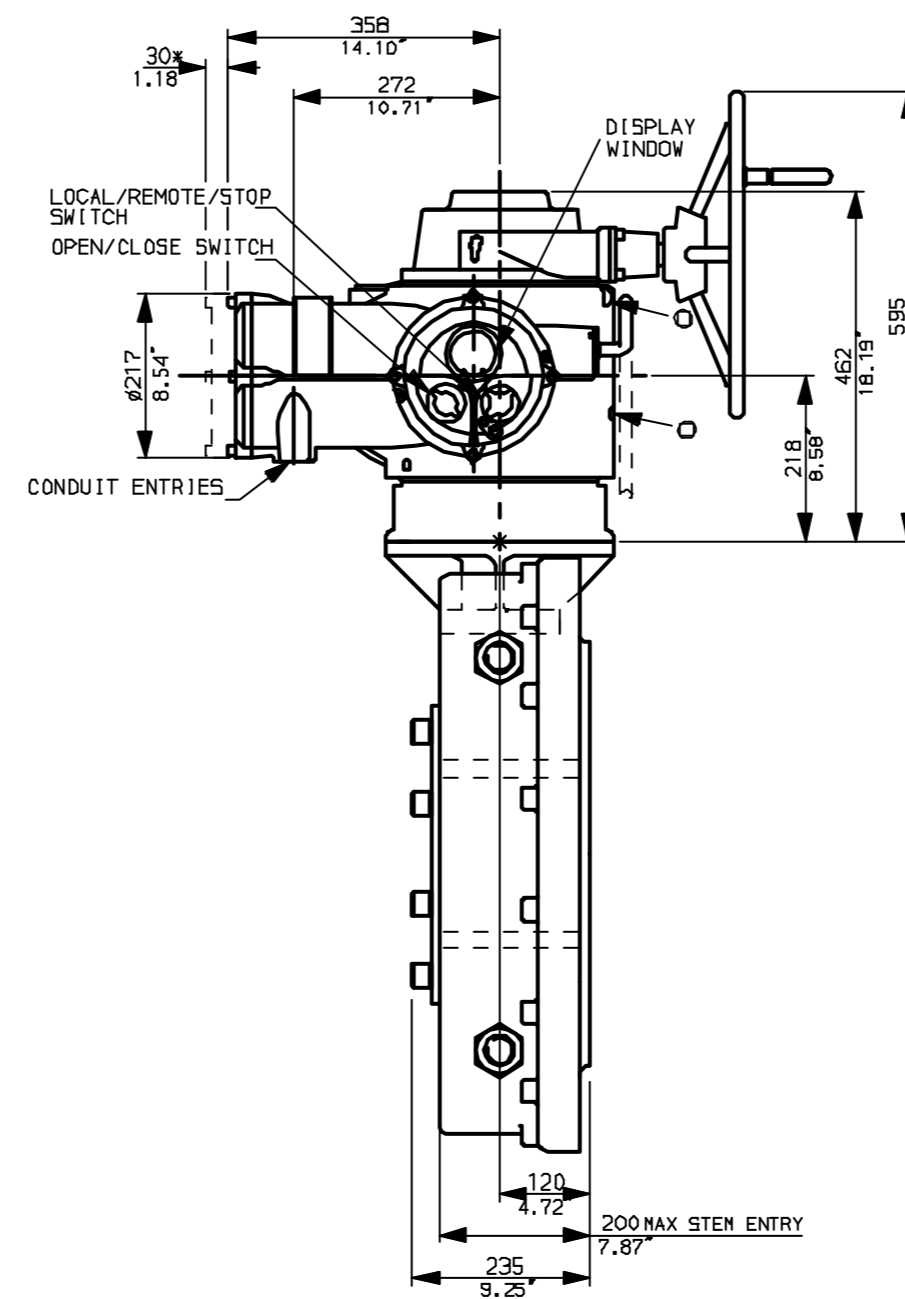
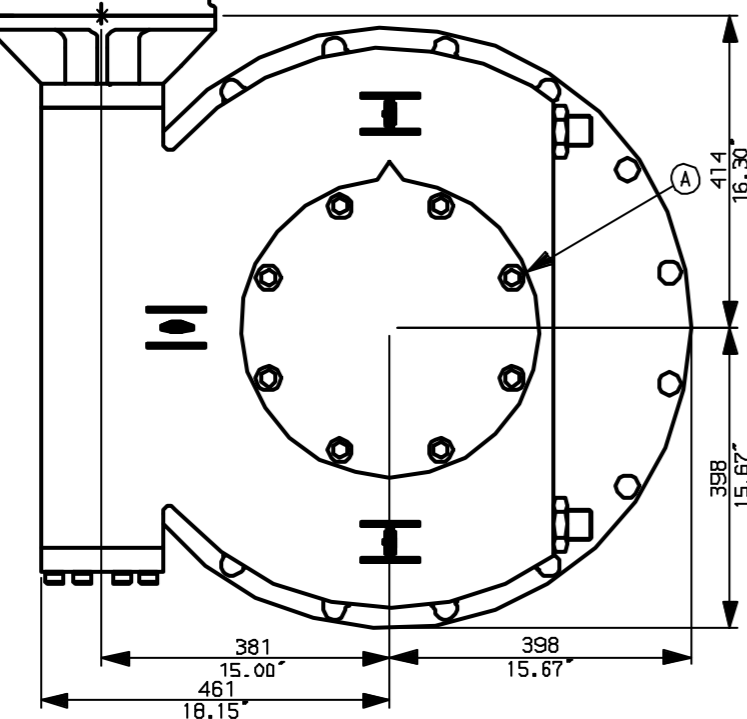
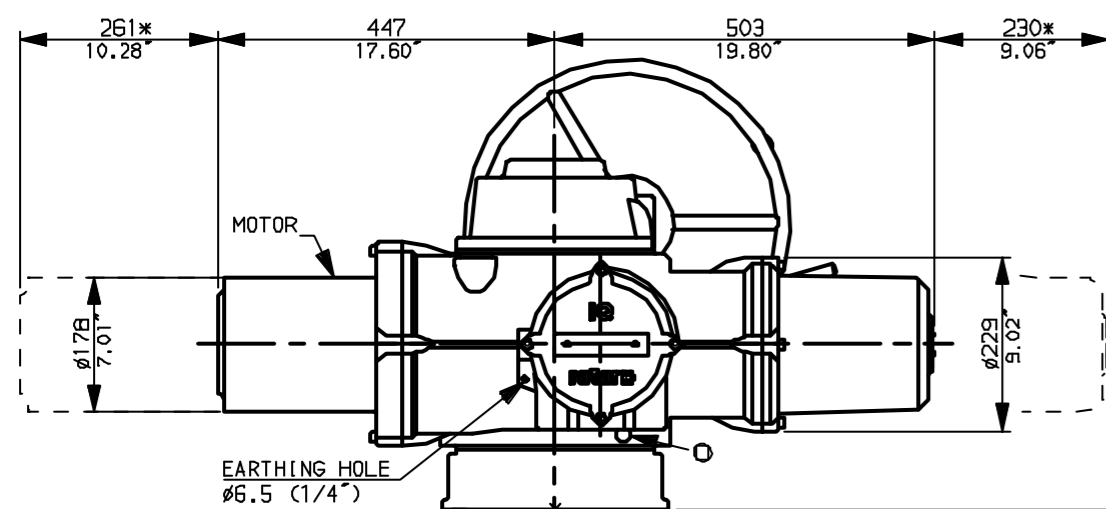
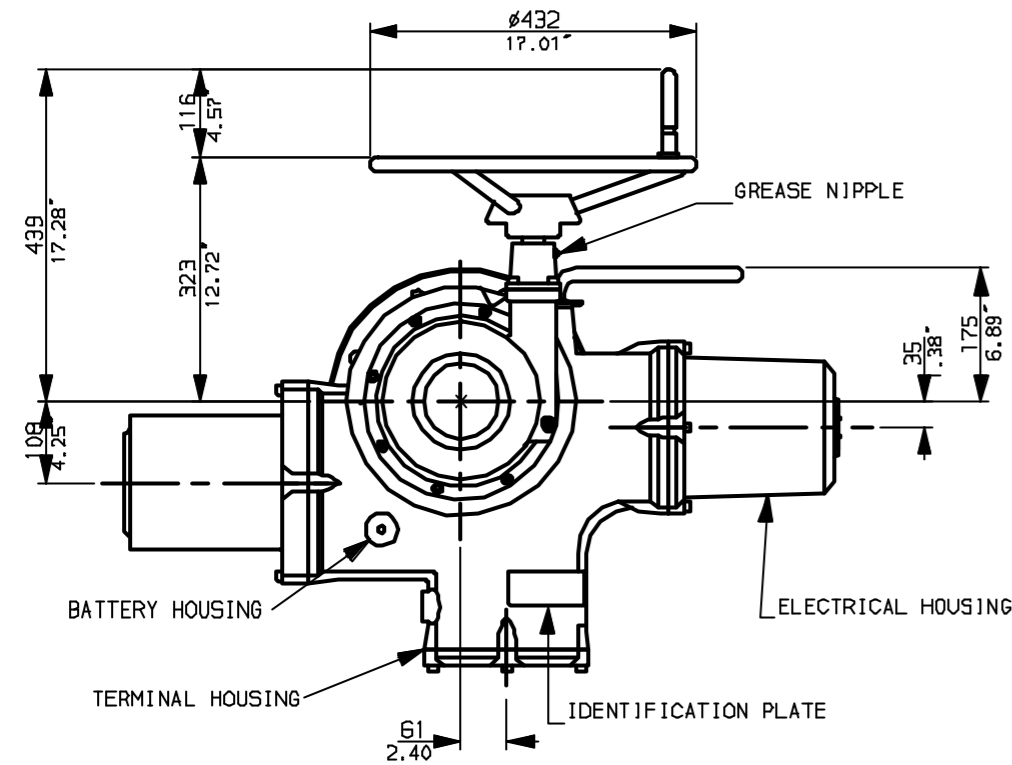


|  |  |
|--|--|
| Rotork Controls Ltd.<br>Bath England, BA1 3JQ.<br>(Phone 01225-733200) | Title IQ40, THW, IW11 (+115),<br>STANDARD DIMENSIONAL DATA |
| Rotork Controls Inc.<br>Rochester, NY 14624<br>(Phone 585-328-1550)    | Drawn CAD Checked PRE Ref Data Sheet                       |
| Date April 04 Job No IQ40THW_IW11                                      |  |

|                |                             |
|----------------|-----------------------------|
| 01<br>Issue    | First Issue.                |
| Scale          | 1:10 THIRD ANGLE PROJECTION |
| Drawing Number | IQ40THW_IW11                |

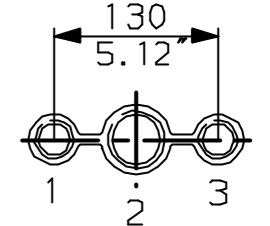
1 | 2 | 3 | 4 | 5 | 6 | 7 | 8 | 9 | 10

G  
F  
E  
D  
C  
B  
A



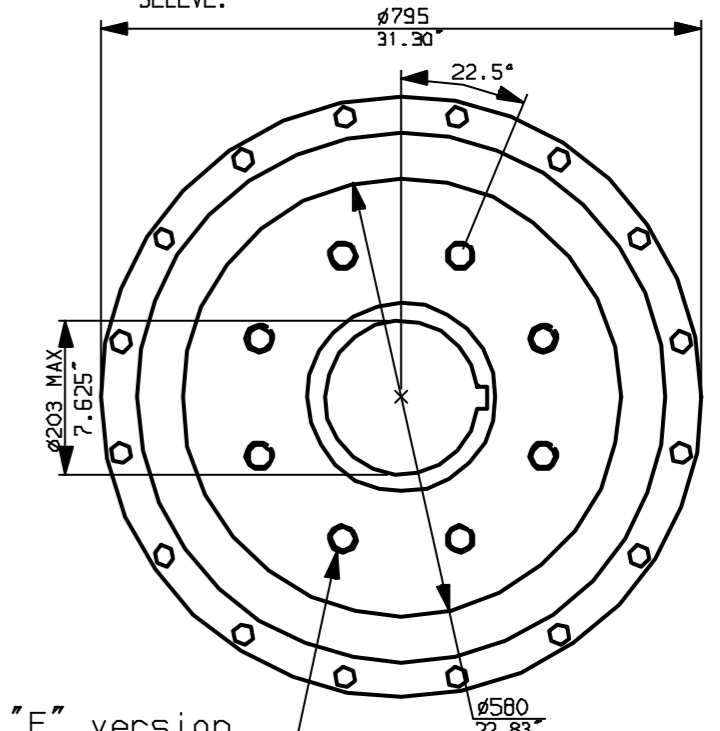
**NOTES:**  
 : DIMENSIONS WITH '\*' INDICATE COVER REMOVAL ALLOWANCE  
 : NETT WEIGHT = 610kg (1342lbs)  
 : = OIL FILLER/DRAIN PLUG  
 : THE INTERFACE PROVIDED FOR MOUNTING THE ACTUATOR OR SECOND STAGE GEARBOX ONTO THE VALVE SHOULD CONFORM TO GOOD ENGINEERING PRACTICES, ENSURING ADEQUATELY TOLERANCED LIMITS FOR PARALLELISM, PERPENDICULARITY AND CONCENTRICITY.

**CONDUIT ENTRIES (N.T.S)**



Nos.1 & 3 TAPPED 1" NPT  
 No.2 TAPPED 1 1/2" NPT  
 STD ALTERNATIVES IF SPECIFIED  
 2 X M25, 1 X M40  
 2 X PG16, 1 X PG29

N.B. KEYWAY POS. CAN BE MOVED IN 45° STEPS BY REMOVING 8 SCREWS MARKED (A) AND ROTATING OUTPUT SLEEVE.



"F" version  
 8 HOLES TAPPED M36 x 36 DP  
 EQUI-SPACED AS SHOWN ON A  
 406 PCD (ISO 5211-F40).

"FA" version  
 8 HOLES TAPPED 1.25" UNC x 1.42" dp  
 EQUI-SPACED AS SHOWN ON A  
 16" PCD (M55 SP101-FA40).



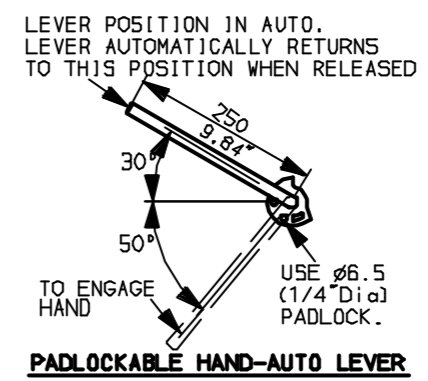
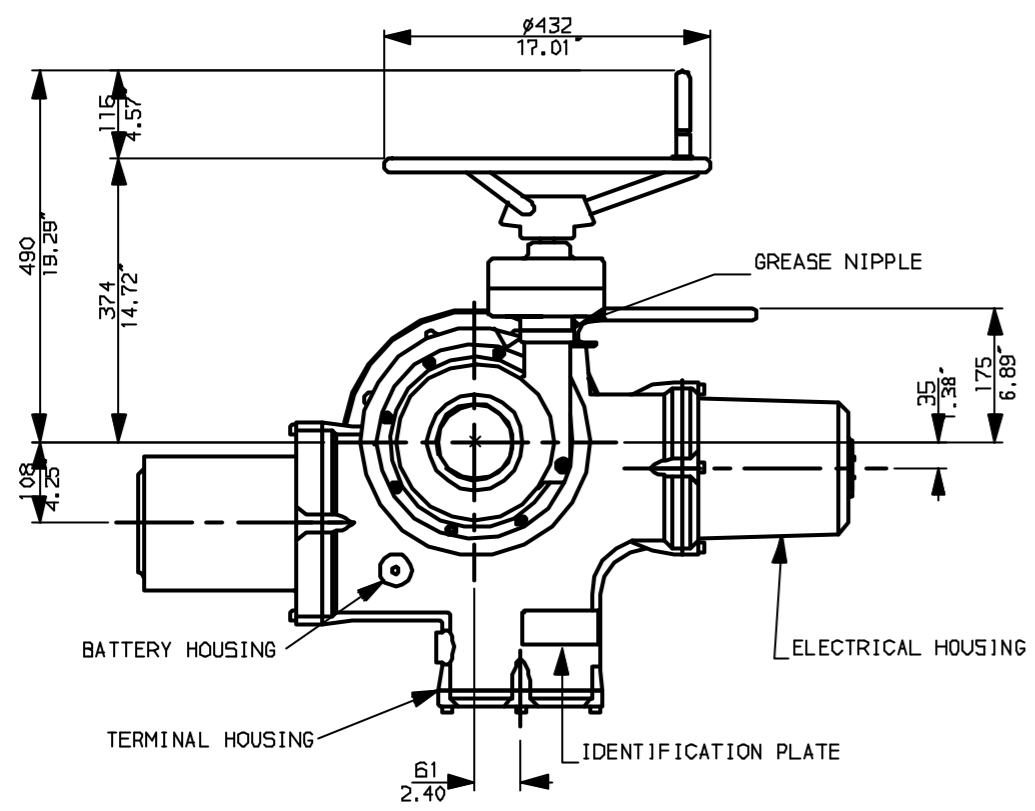
Rotork Controls Ltd.  
 Bath England, BA1 3JQ.  
 (Phone 01225-733200)  
 Rotork Controls Inc.  
 Rochester, NY 14624  
 (Phone 585-328-1550)

|                               |             |                     |
|-------------------------------|-------------|---------------------|
| Title IQ40, SHW, IW11 (+115), |             |                     |
| STANDARD DIMENSIONAL DATA     |             |                     |
| Drawn CAD                     | Checked PRE | Ref Data Sheet      |
| Date April 04                 | Job No      | <b>IQ40SHW_IW11</b> |

|                |                             |
|----------------|-----------------------------|
| 01             | First Issue.                |
| Scale          | 1:10 THIRD ANGLE PROJECTION |
| Drawing Number | <b>IQ40SHW_IW11</b>         |

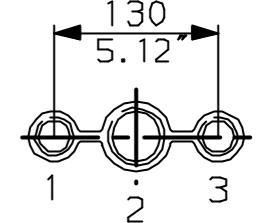
1 | 2 | 3 | 4 | 5 | 6 | 7 | 8 | 9 | 10

G  
F  
E  
D  
C  
B  
A

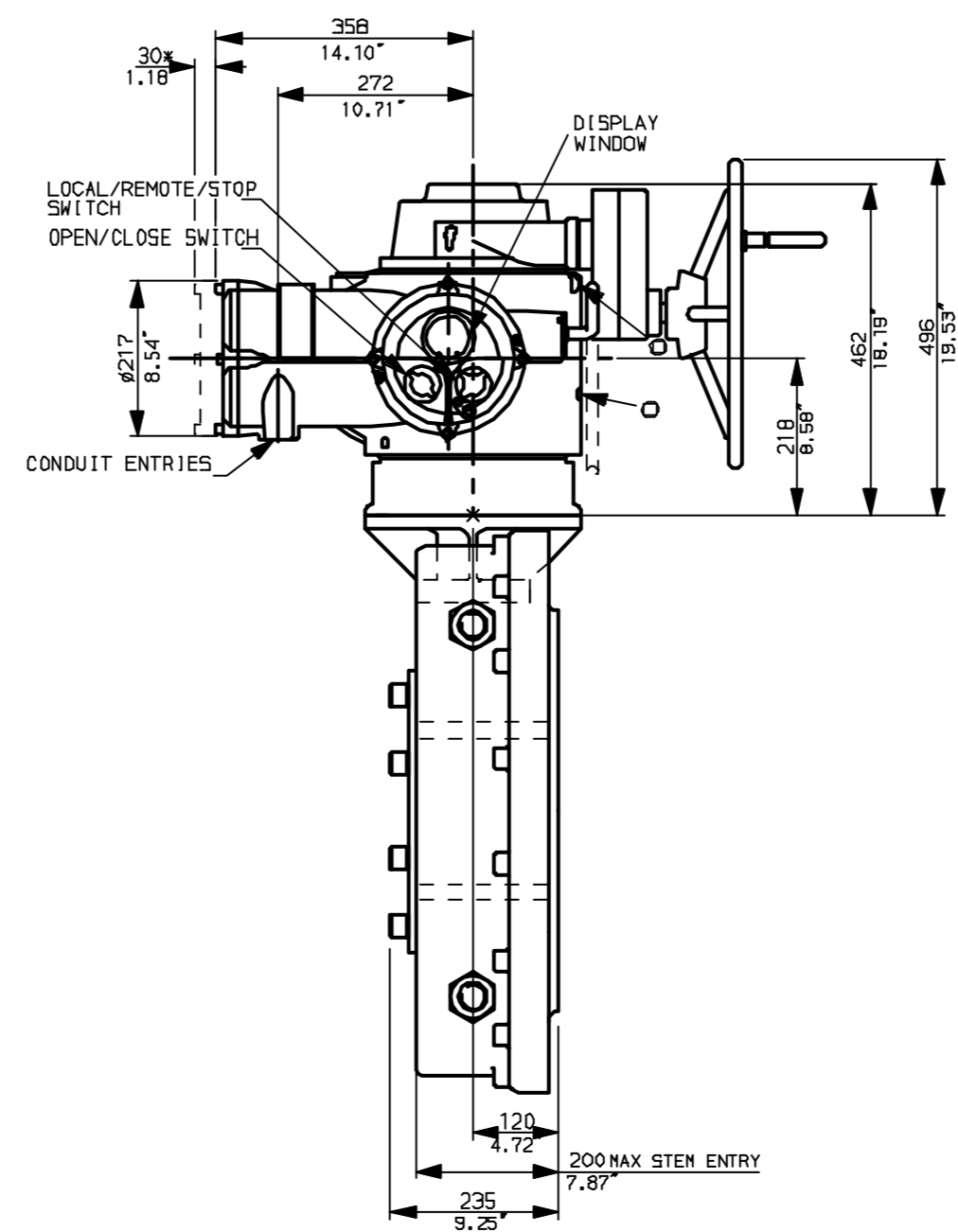
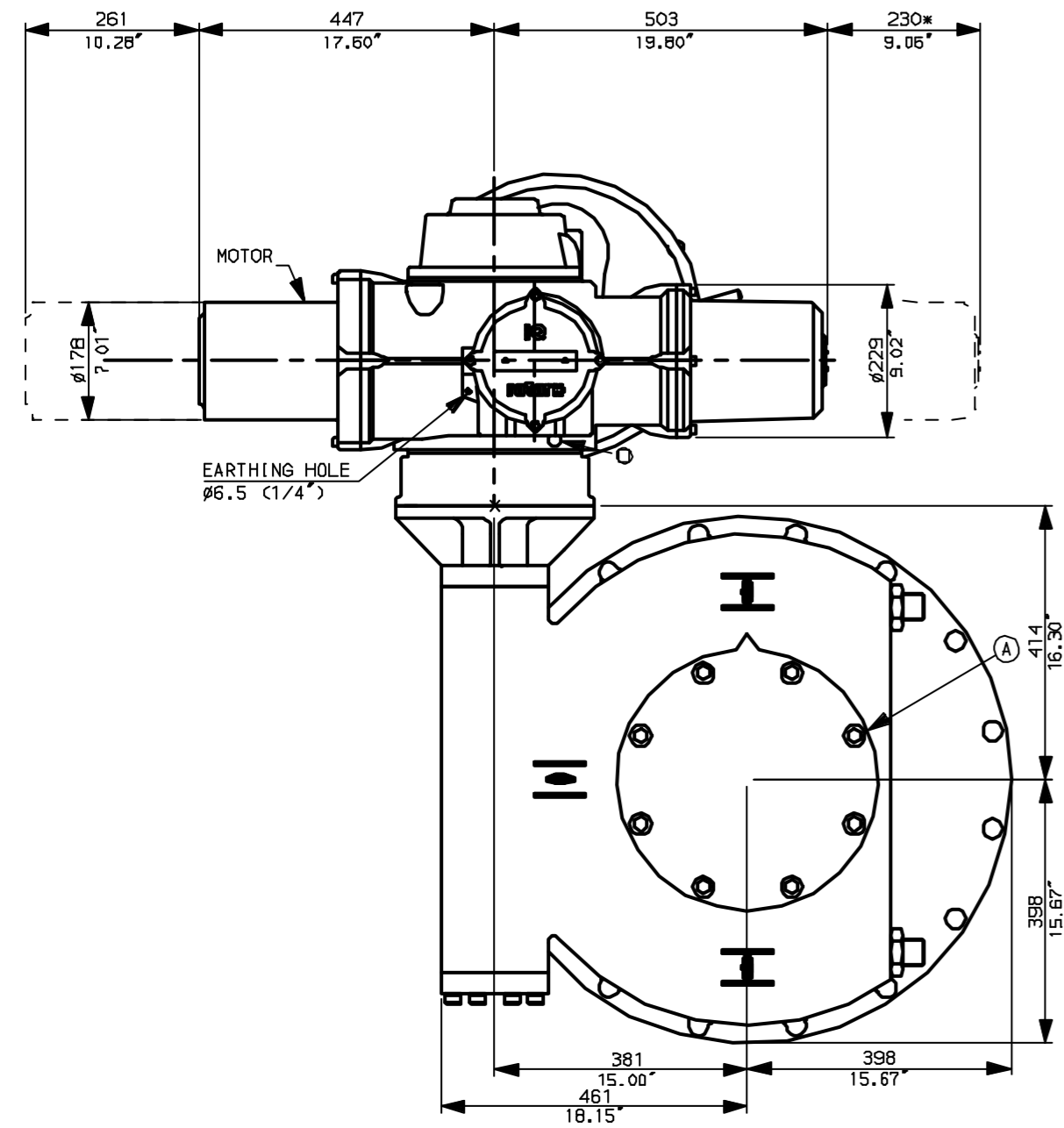


NOTES:  
 \* DIMENSIONS WITH '\*' INDICATE COVER REMOVAL ALLOWANCE  
 NETT WEIGHT = 610kg (1342lbs)  
 ○ = OIL FILLER/DRAIN PLUG  
 THE INTERFACE PROVIDED FOR MOUNTING THE ACTUATOR OR SECOND STAGE GEARBOX ONTO THE VALVE SHOULD CONFORM TO GOOD ENGINEERING PRACTICES, ENSURING ADEQUATELY TOLERANCED LIMITS FOR PARALLELISM, PERPENDICULARITY AND CONCENTRICITY.

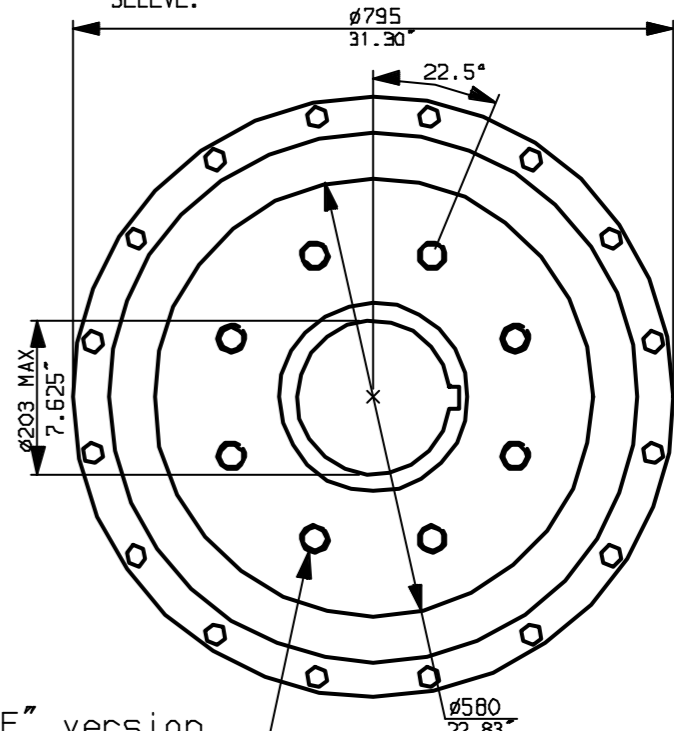
CONDUIT ENTRIES (N.T.S)



Nos.1 & 3 TAPPED 1" NPT  
 No.2 TAPPED 1 1/2" NPT  
 STD ALTERNATIVES IF SPECIFIED  
 2 X M25, 1 X M40  
 2 X PG16, 1 X PG29



N.B. KEYWAY POS. CAN BE MOVED IN 45° STEPS BY REMOVING 8 SCREWS MARKED (A) AND ROTATING OUTPUT SLEEVE.



"F" version

8 HOLES TAPPED M36 x 36 DP EQUI-SPACED AS SHOWN ON A 406 PCD (ISO 5211-F40).

"FA" version

8 HOLES TAPPED 1.25" UNC x 1.42" dp EQUI-SPACED AS SHOWN ON A 16" PCD (MS5 SP101-FA40).



Rotork Controls Ltd.  
 Bath England, BA1 3JQ.  
 (Phone 01225-733200)

Rotork Controls Inc.  
 Rochester, NY 14624  
 (Phone 585-328-1550)

Title IQ40, SSHW, IW11 (+115),  
 STANDARD DIMENSIONAL DATA

Drawn CAD Checked PRE Ref Data Sheet

Date April 04 Job No IQ40SSHW\_IW11

|                |                             |
|----------------|-----------------------------|
| 01             | First Issue.                |
| Issue          |                             |
| Scale          | 1:10 THIRD ANGLE PROJECTION |
| Drawing Number | IQ40SSHW_IW11               |

1 | 2 | 3 | 4 | 5 | 6 | 7 | 8 | 9 | 10