

CIRCUIT DRAWN WITH  
POWER SUPPLY OFF

FOR TYPICAL REMOTE CONTROL  
DETAILS SEE DOCUMENT  
**RWS301**

TRANSFORMER TAPPING OPTIONS

TAP	NOM 50/60HZ	50HZ	60HZ
W	200	160-220	180-236
X	220	176-242	198-259
Y	400	320-440	360-472
Z	440	352-484	396-519

FUSE FS1 - 250mA ANTI-SURGE  
PS1 SELF RESETTING FUSE.

NOTE

REFER TO PUBLICATION E170E FOR  
APPROVED FUSES FS1 AND FS2.

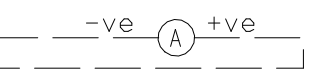
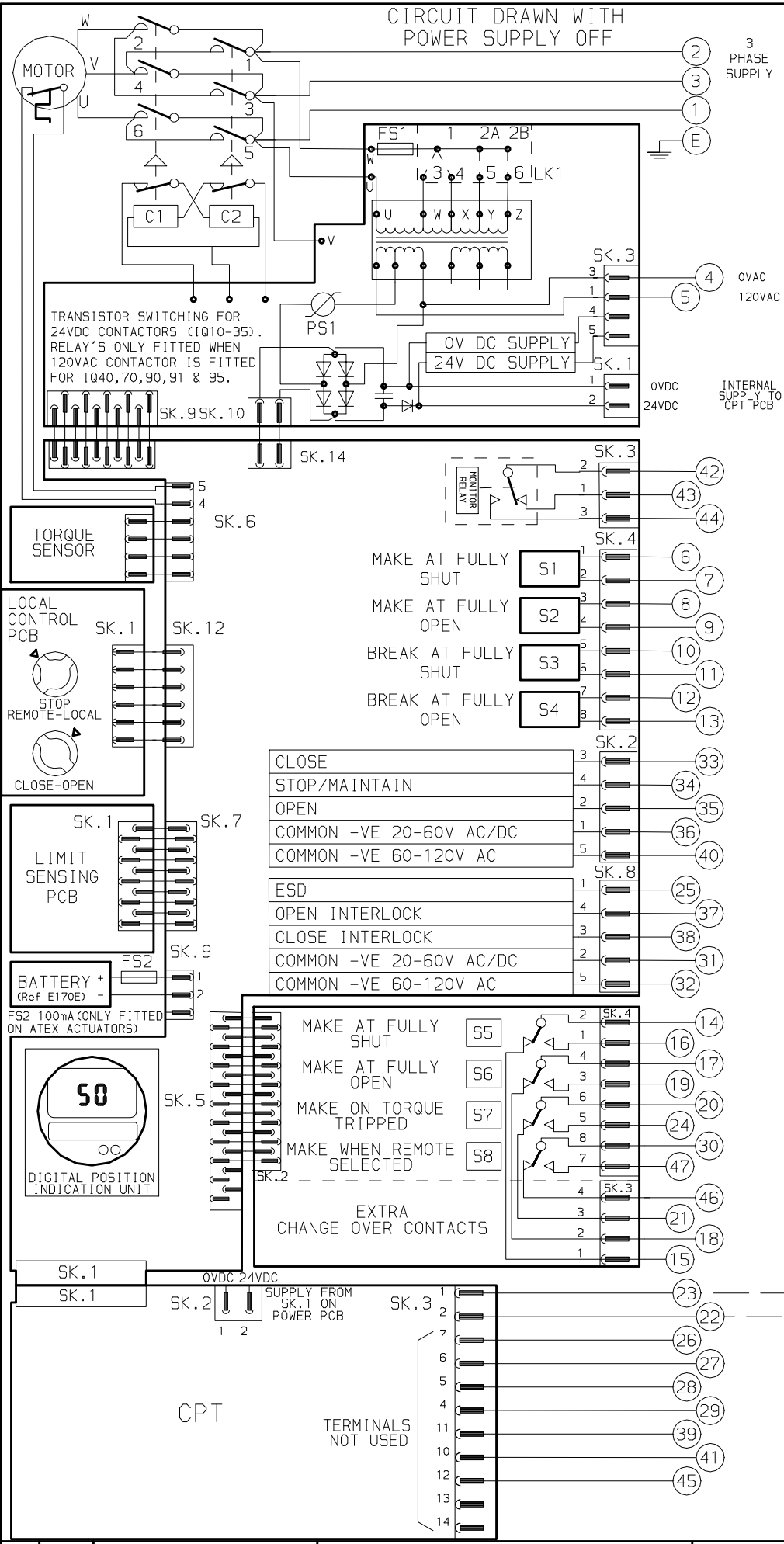
MAX EXTERNAL LOAD ON TERMINALS  
4 & 5 TO BE 5W.

CONTROL SIGNAL THRESHOLD VOLTAGES  
TO BE MINIMUM 'ON' 20V AC/DC  
MAXIMUM 'OFF' = 3V  
MINIMUM CONTROL SIGNAL DURATION  
TO BE 300mS.

CURRENT DRAWN FROM EACH REMOTE  
CONTROL SIGNAL IS 5mA ON 24V DC  
OR 12mA ON 120V AC

WIRES ARE IDENTIFIED AT EACH END  
BY TERMINAL No. OR TAG No.

INDICATION CONTACTS S1-S4 AND EXTRA  
INDICATION CONTACTS S5-S8 ARE SHOWN  
IN THEIR DEFAULT CONFIGURATION.  
CONTACTS MAY BE CONFIGURED FOR ANY  
OF THE FUNCTIONS DESCRIBED IN E170E



FOR DETAILS OF CPT FUNCTIONS  
REFER TO ROTORK PUBLICATION E120E

No	DATE	REVISION DETAILS
01	231013	FIRST ISSUE

**www.rotork.com**

ROTORK CONTROLS LTD BATH, BA1 3JQ ENGLAND Tel:01225-733200	ROTORK CONTROLS INC ROCHESTER NY 14624, USA Tel:585-247-2304
---	---

CONFIG BY JC1  
DATE 231013  
CHECKED PJW  
BASE WD 4110-001  
JOB No --  
M.I.No .

**IQ + IND RELAYS + CPT  
JAPAN TRANSFORMER + 120VAC**

CIRCUIT DIAGRAM No -REV 102  
**4110-001-01**

B1	C1	B2	C2	B1	C1	M1	V1
----	----	----	----	----	----	----	----