

G

F

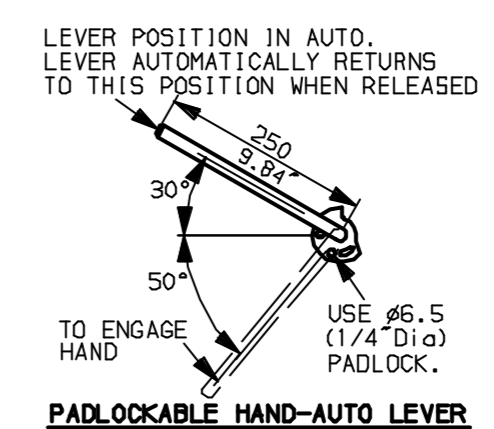
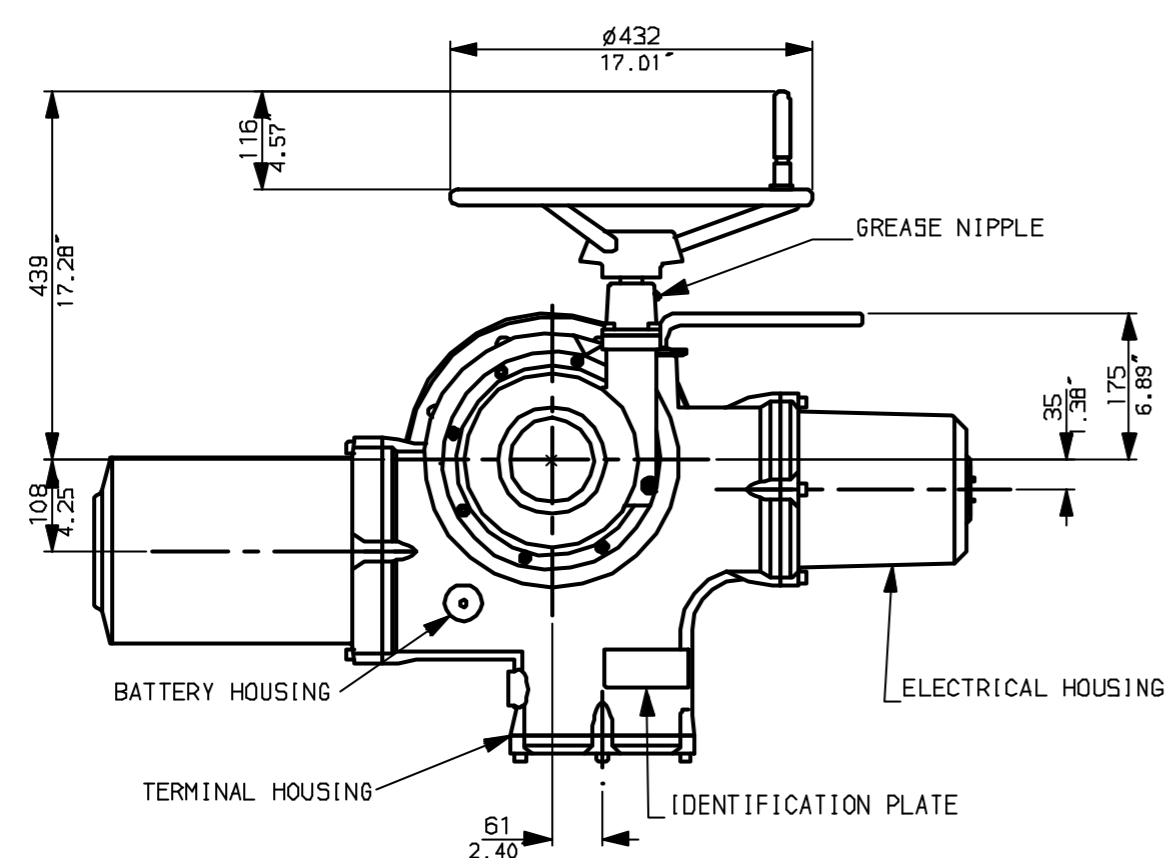
E

D

C

B

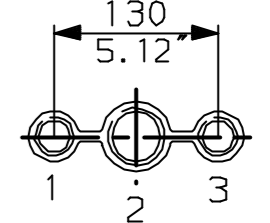
A



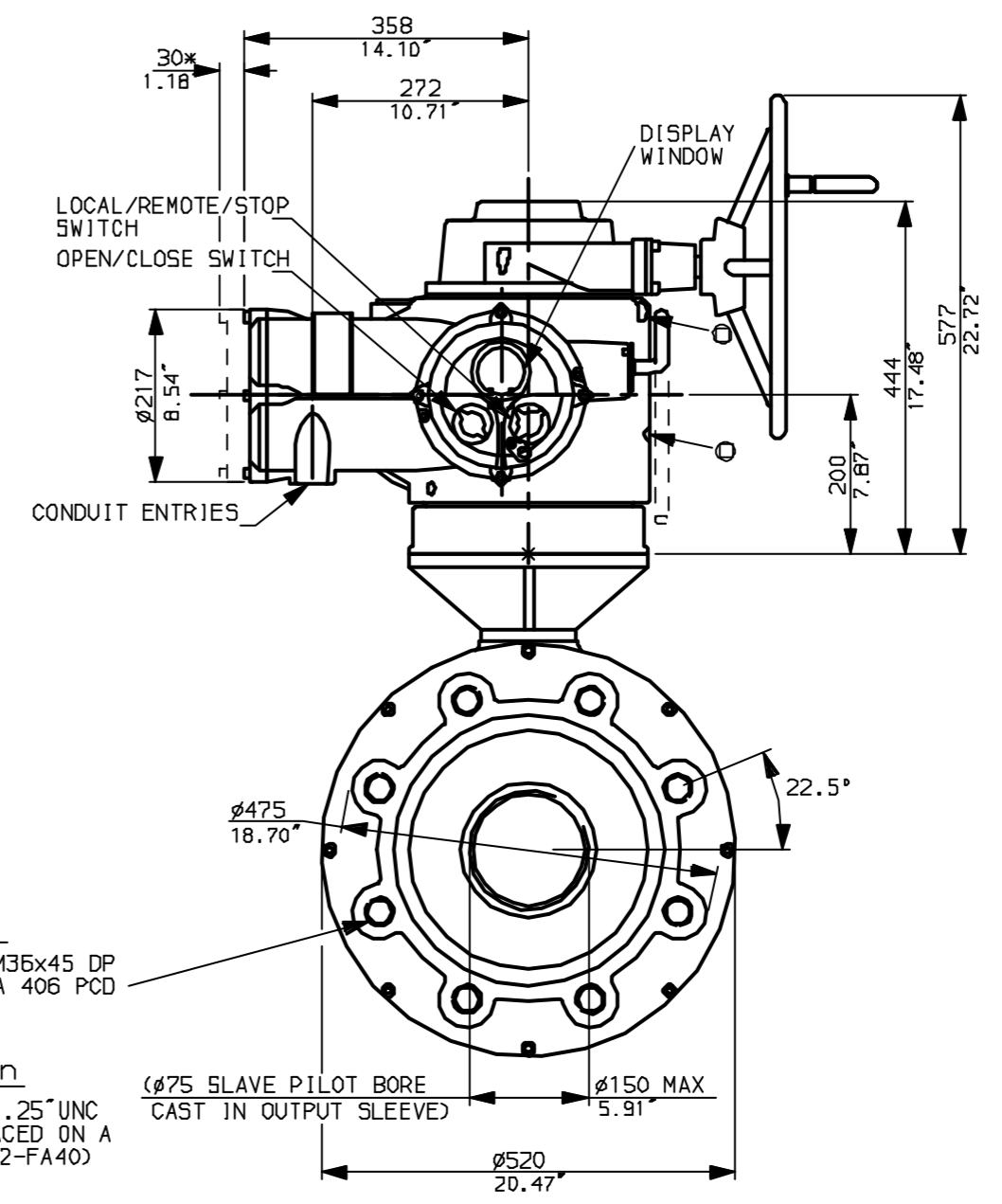
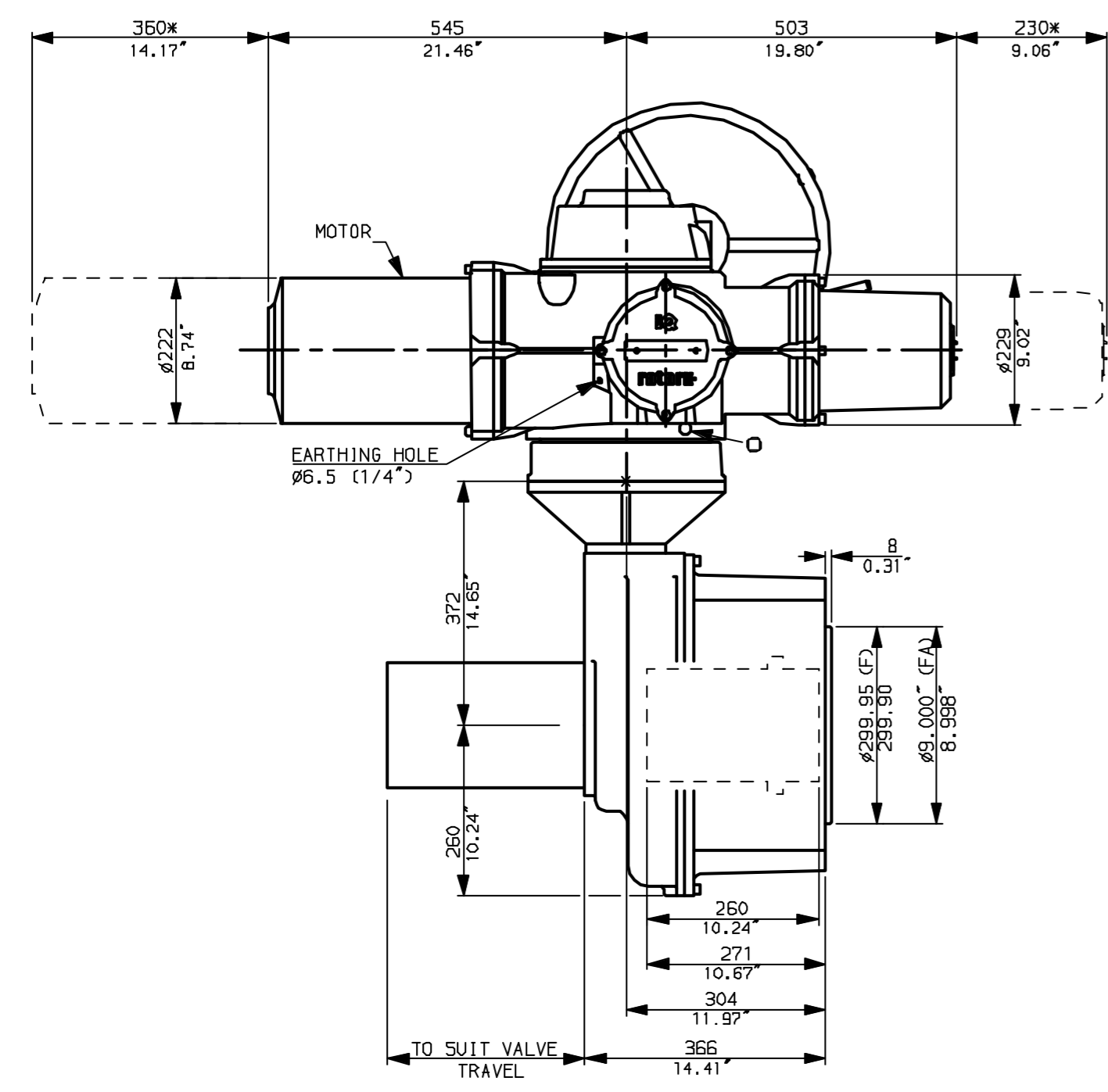
NOTES:

- DIMENSIONS WITH '*' INDICATE COVER REMOVAL ALLOWANCE
- NETT WEIGHT = 562kg (1236lbs)
- \odot = OIL FILLER/DRAIN PLUG
- THE INTERFACE PROVIDED FOR MOUNTING THE ACTUATOR OR SECOND STAGE GEARBOX ONTO THE VALVE SHOULD CONFORM TO GOOD ENGINEERING PRACTICES, ENSURING ADEQUATELY TOLERANCED LIMITS FOR PARALLELISM, PERPENDICULARITY AND CONCENTRICITY.

CONDUIT ENTRIES (N.T.S)



Nos.1 & 3 TAPPED 1" NPT
 No.2 TAPPED 1 1/2" NPT
 STD ALTERNATIVES IF SPECIFIED
 2 X M25, 1 X M40
 2 X PG16, 1 X PG29



"F" version
 8 HOLES TAPPED M36x45 DP
 EQU1-SPACED ON A 406 PCD
 (IS05210 F40)

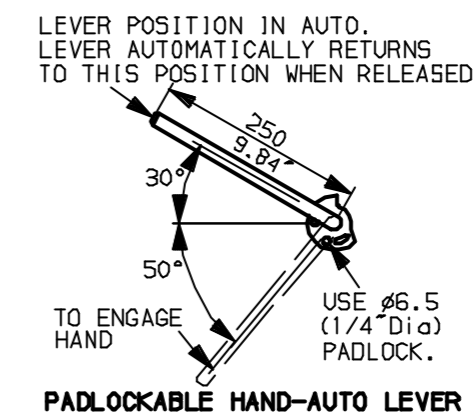
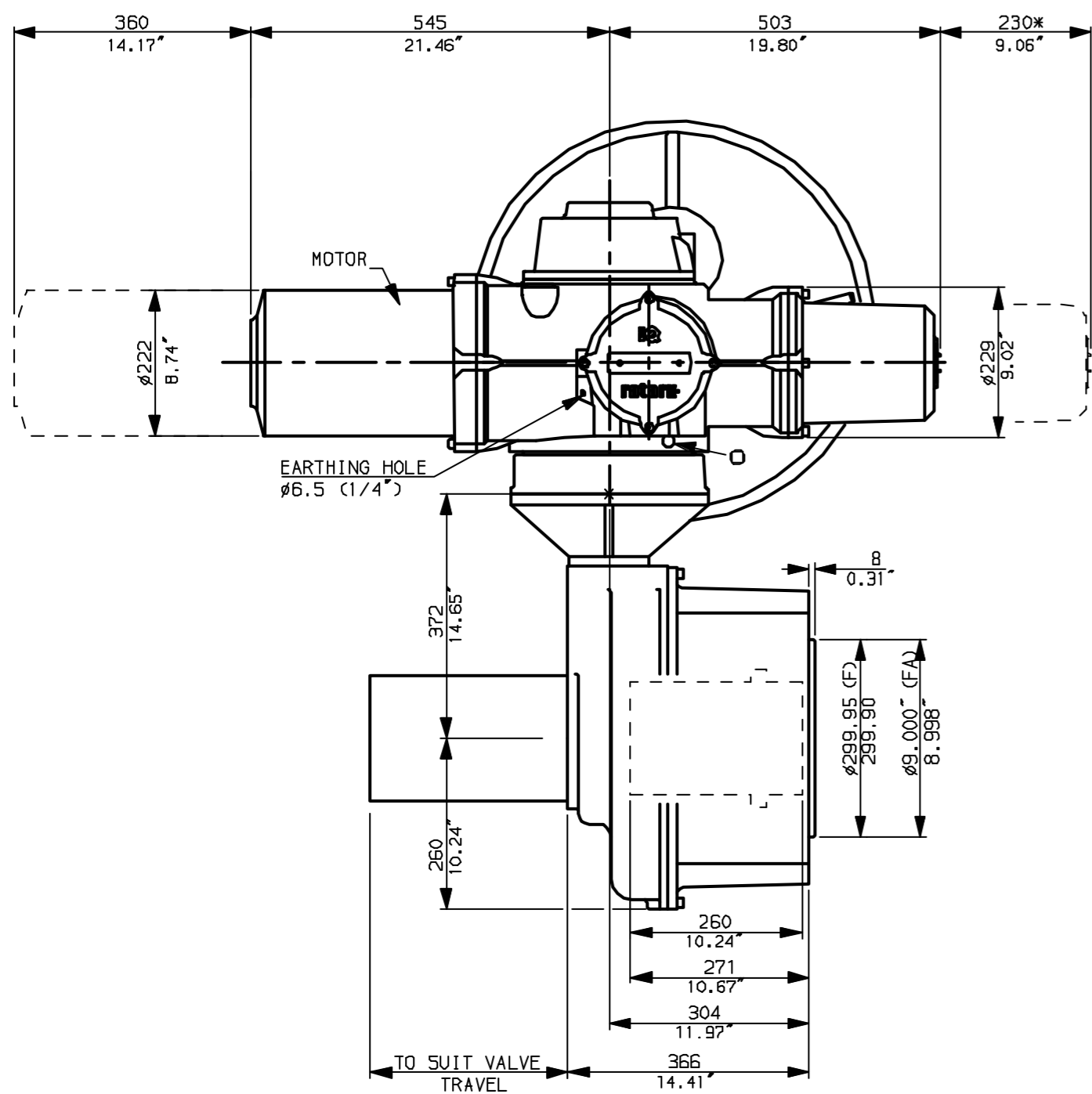
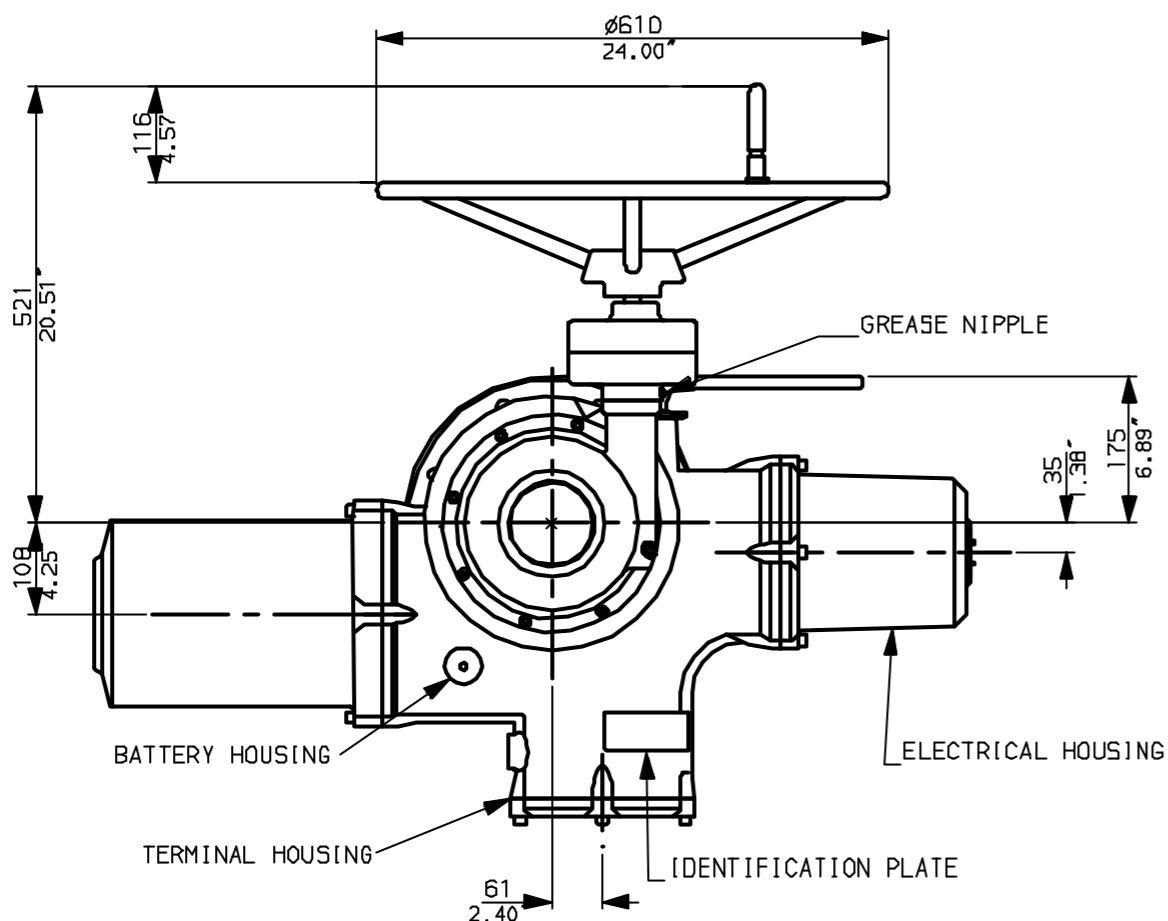
"FA" version
 8 HOLES TAPPED 1.25"UNC
 x1.8" dp EQU1-SPACED ON A
 16"PCD (M55 5P102-FA40)



Rotork Controls Ltd. Bath England, BA1 3JQ. (Phone 01225-733200)	Title IQ91, SHW, IB14, STANDARD DIMENSIONAL DATA
Rotork Controls Inc. Rochester, NY 14624 (Phone 585-328-1550)	Drawn CAD Checked PRE Ref Data Sheet
Date April 04 Job No IQ91SHW_IB14	

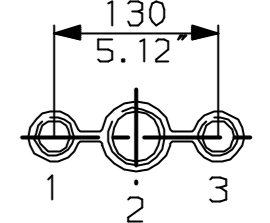
01 Issue	First Issue.
Scale 1:9	THIRD ANGLE PROJECTION
Drawing Number	IQ91SHW_IB14

G
F
E
D
C
B
A

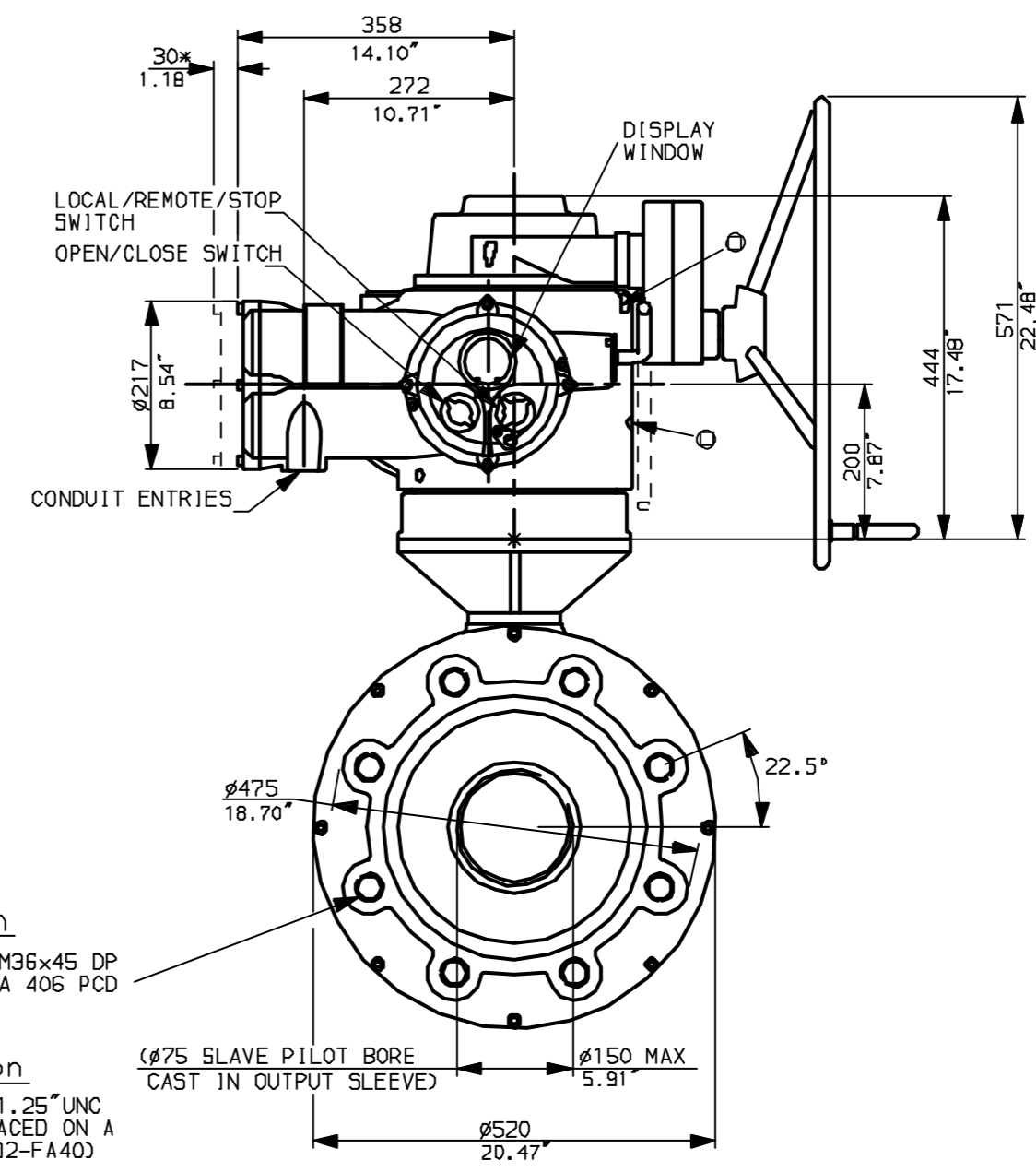


NOTES:
 * DIMENSIONS WITH '*' INDICATE COVER REMOVAL ALLOWANCE
 NETT WEIGHT = 562kg (1236lbs)
 ○ = OIL FILLER/DRAIN PLUG
 THE INTERFACE PROVIDED FOR MOUNTING THE ACTUATOR OR SECOND STAGE GEARBOX ONTO THE VALVE SHOULD CONFORM TO GOOD ENGINEERING PRACTICES, ENSURING ADEQUATELY TOLERANCED LIMITS FOR PARALLELISM, PERPENDICULARITY AND CONCENTRICITY.

CONDUIT ENTRIES (N.T.S)



Nos.1 & 3 TAPPED 1" NPT
 No.2 TAPPED 1 1/2" NPT
 STD ALTERNATIVES IF SPECIFIED
 2 X M25, 1 X M40
 2 X PG16, 1 X PG29



"F" version
 8 HOLES TAPPED M36x45 DP EQUI-SPACED ON A 406 PCD (ISO5210 F40)

"FA" version
 8 HOLES TAPPED 1.25" UNC x 1.8" dp EQUI-SPACED ON A 16" PCD (MSS SP102-FA40)

($\phi 75$ SLAVE PILOT BORE CAST IN OUTPUT SLEEVE)



Rotork Controls Ltd. Bath England, BA1 3JQ. (Phone 01225-733200)		Title IQ91, SSHW, IB14,	
Rotork Controls Inc. Rochester, NY 14624 (Phone 585-328-1550)		STANDARD DIMENSIONAL DATA	
Drawn CAD	Checked PRE	Ref Data Sheet	
Date April 04	Job No IQ91SSHW_IB14		

01	First Issue.
Scale 1:9	THIRD ANGLE PROJECTION
Drawing Number	IQ91SSHW_IB14

1 | 2 | 3 | 4 | 5 | 6 | 7 | 8 | 9 | 10