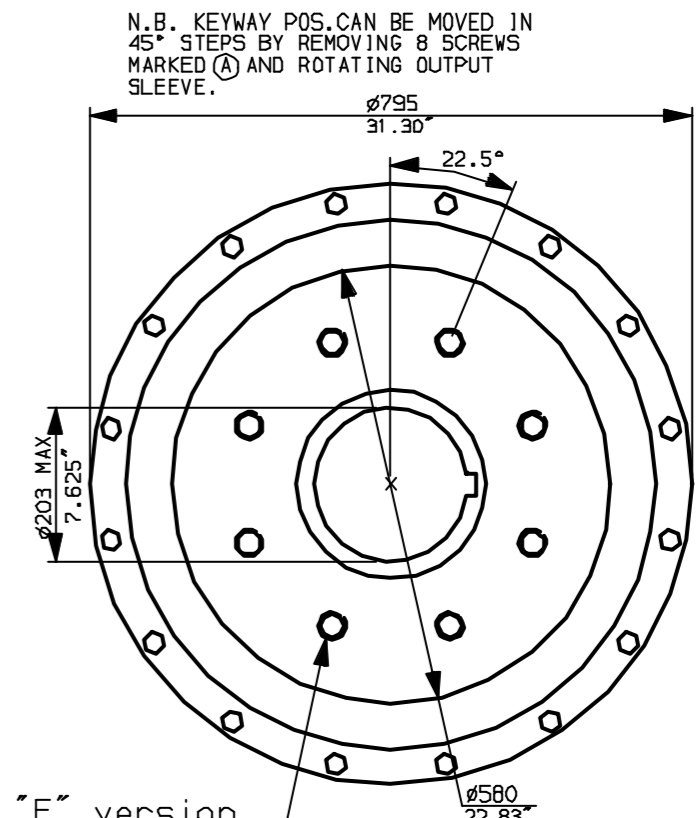
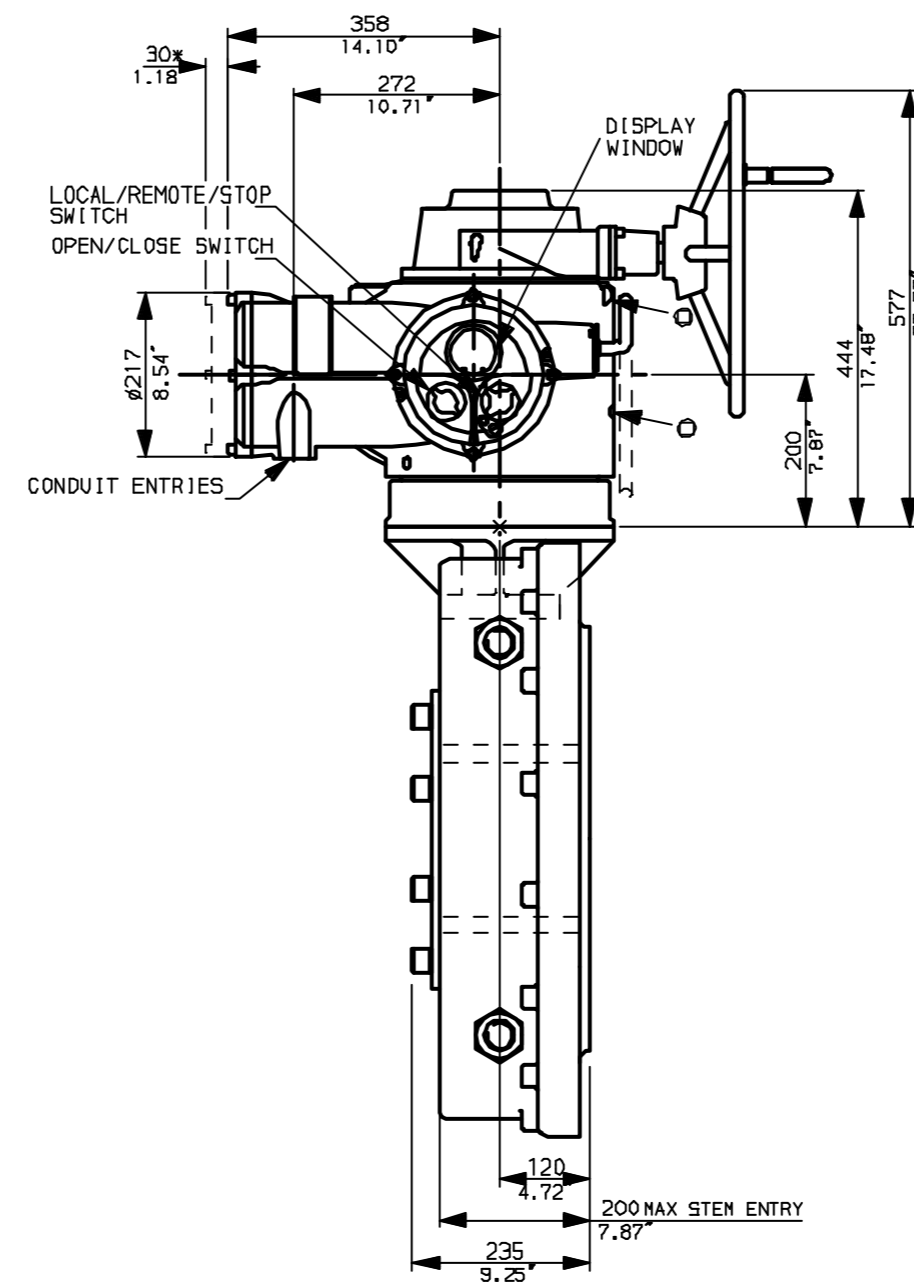
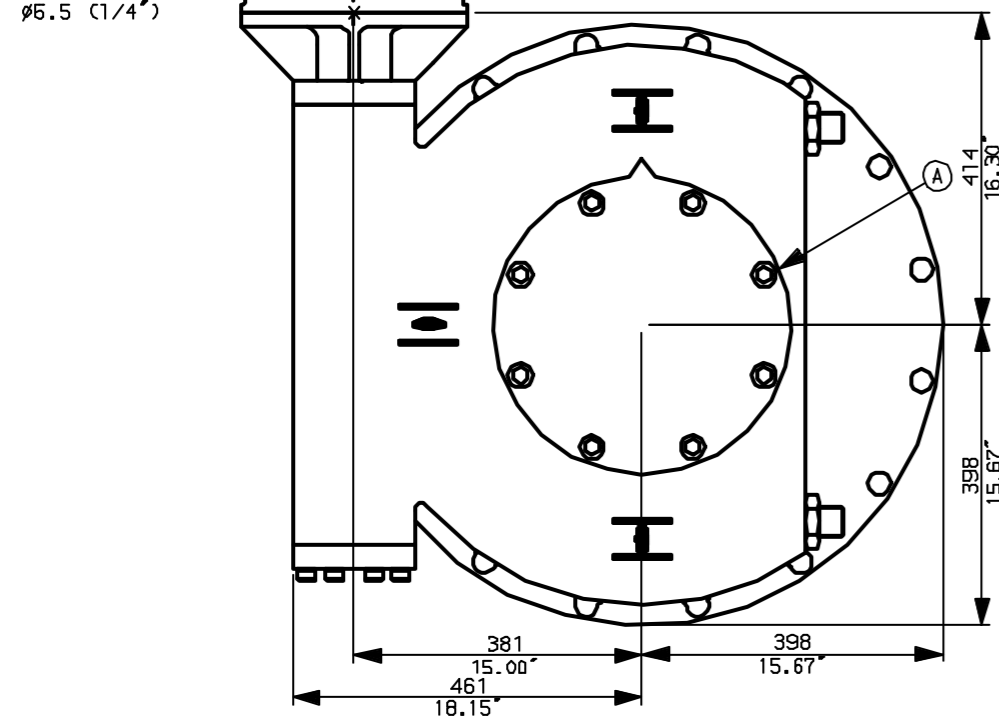
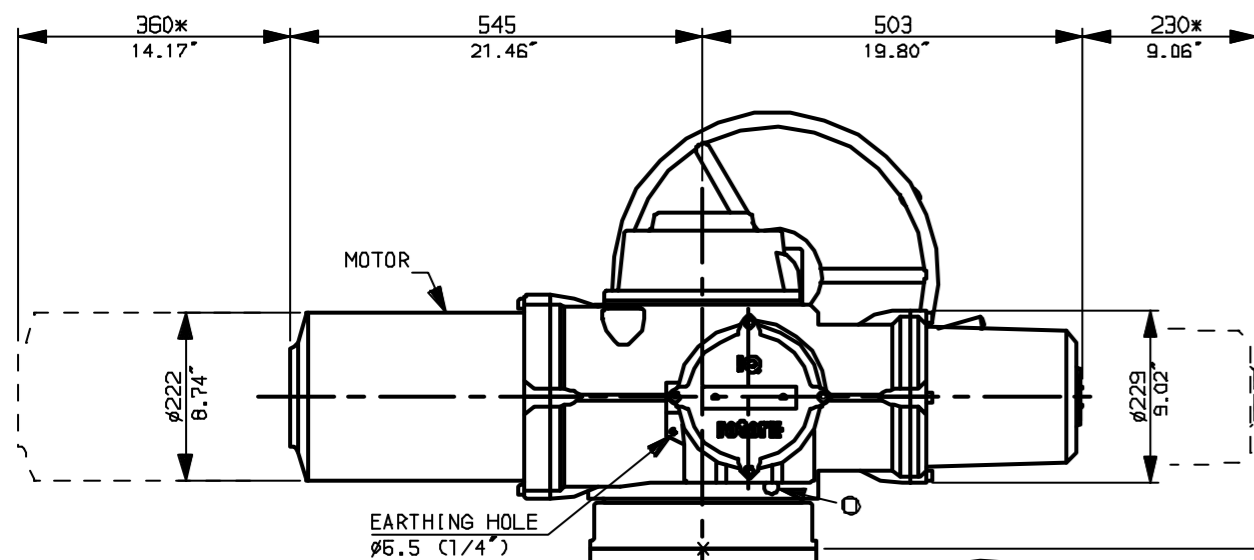
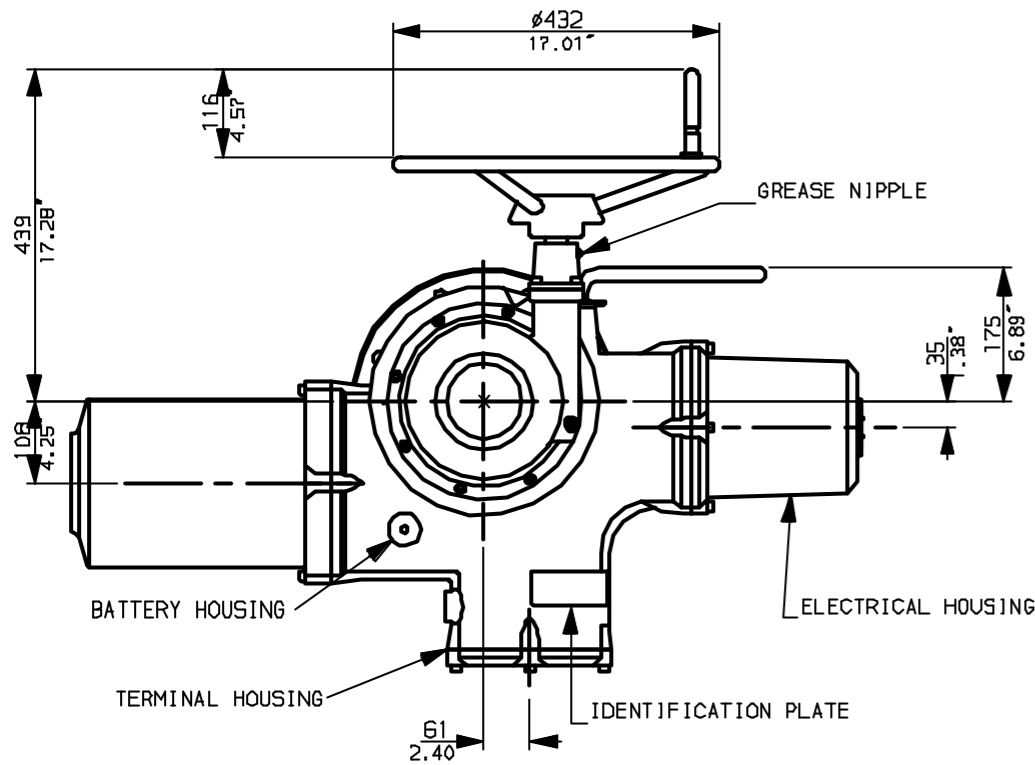
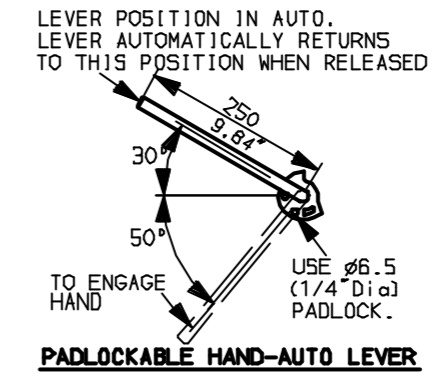


G  
F  
E  
D  
C  
B  
A



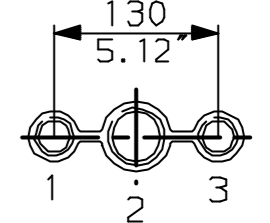
"F" version  
8 HOLES TAPPED M36 x 36 DP  
EQUI-SPACED AS SHOWN ON A  
406 PCD (150 5211-F40).

"FA" version  
8 HOLES TAPPED 1.25"UNCx1.42"dp  
EQUI-SPACED AS SHOWN ON A  
16" PCD (MSS SP101-FA40).



NOTES:  
: DIMENSIONS WITH '\*' INDICATE  
COVER REMOVAL ALLOWANCE  
: NETT WEIGHT = 630kg (1386lbs)  
: = OIL FILLER/DRAIN PLUG  
: THE INTERFACE PROVIDED FOR MOUNTING THE  
ACTUATOR OR SECOND STAGE GEARBOX ONTO THE  
VALVE SHOULD CONFORM TO GOOD ENGINEERING  
PRACTICES, ENSURING ADEQUATELY TOLERANCED  
LIMITS FOR PARALLELISM, PERPENDICULARITY  
AND CONCENTRICITY.

**CONDUIT ENTRIES** (N.T.S)



Nos.1 & 3 TAPPED 1" NPT  
No.2 TAPPED 1 1/2" NPT  
STD ALTERNATIVES IF SPECIFIED  
2 X M25, 1 X M40  
2 X PG16, 1 X PG29

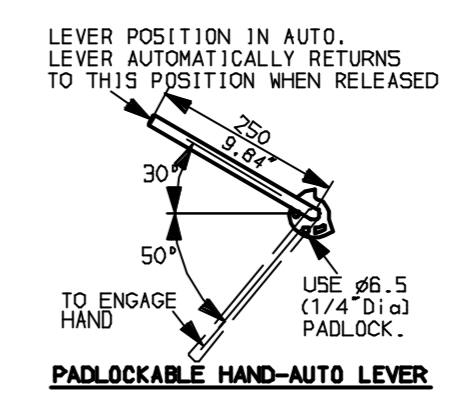


Rotork Controls Ltd. Bath England, BA1 3JQ. (Phone 01225-733200)		Title IQ91, SHW, IW11 (+115), STANDARD DIMENSIONAL DATA	
Rotork Controls Inc. Rochester, NY 14624 (Phone 585-328-1550)		Drawn CAD Checked PRE Ref Data Sheet	
Date April 04 Job No IQ91SHW_IW11			

01 Issue	First Issue.
Scale	1:10 THIRD ANGLE PROJECTION
Drawing Number	IQ91SHW_IW11

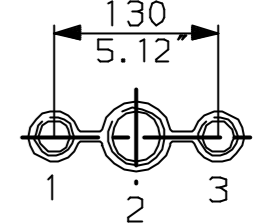
1 | 2 | 3 | 4 | 5 | 6 | 7 | 8 | 9 | 10

G  
F  
E  
D  
C  
B  
A

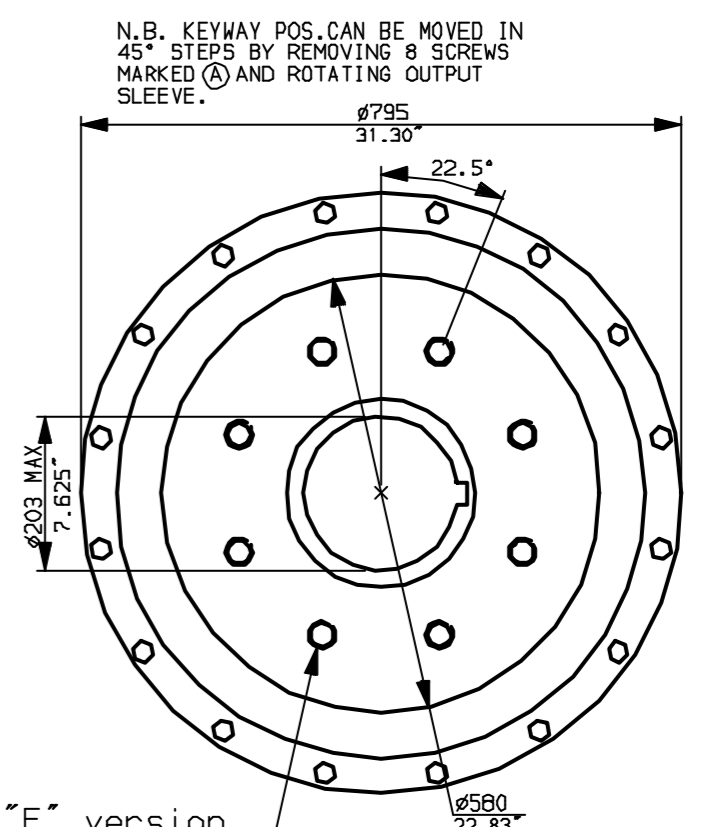
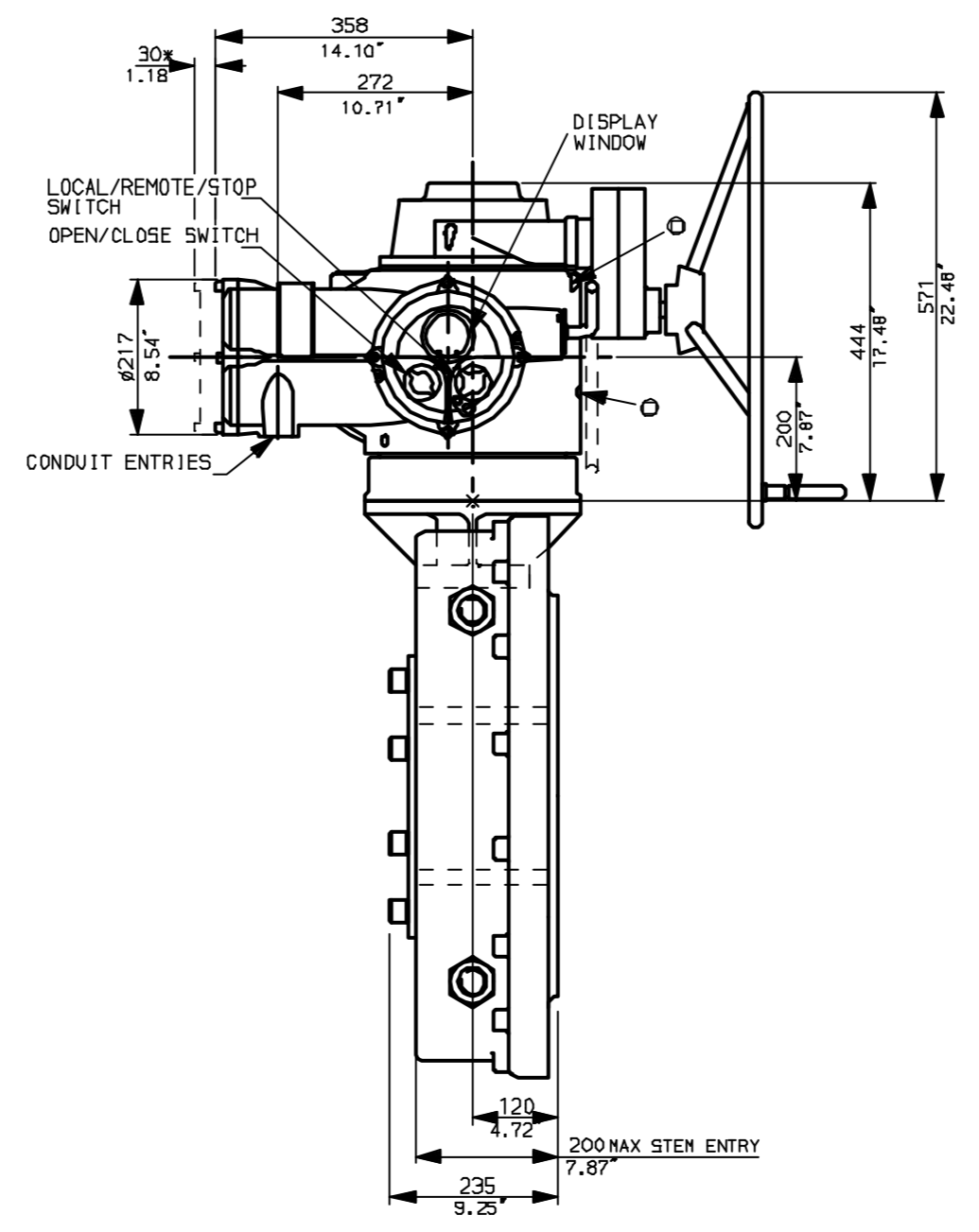
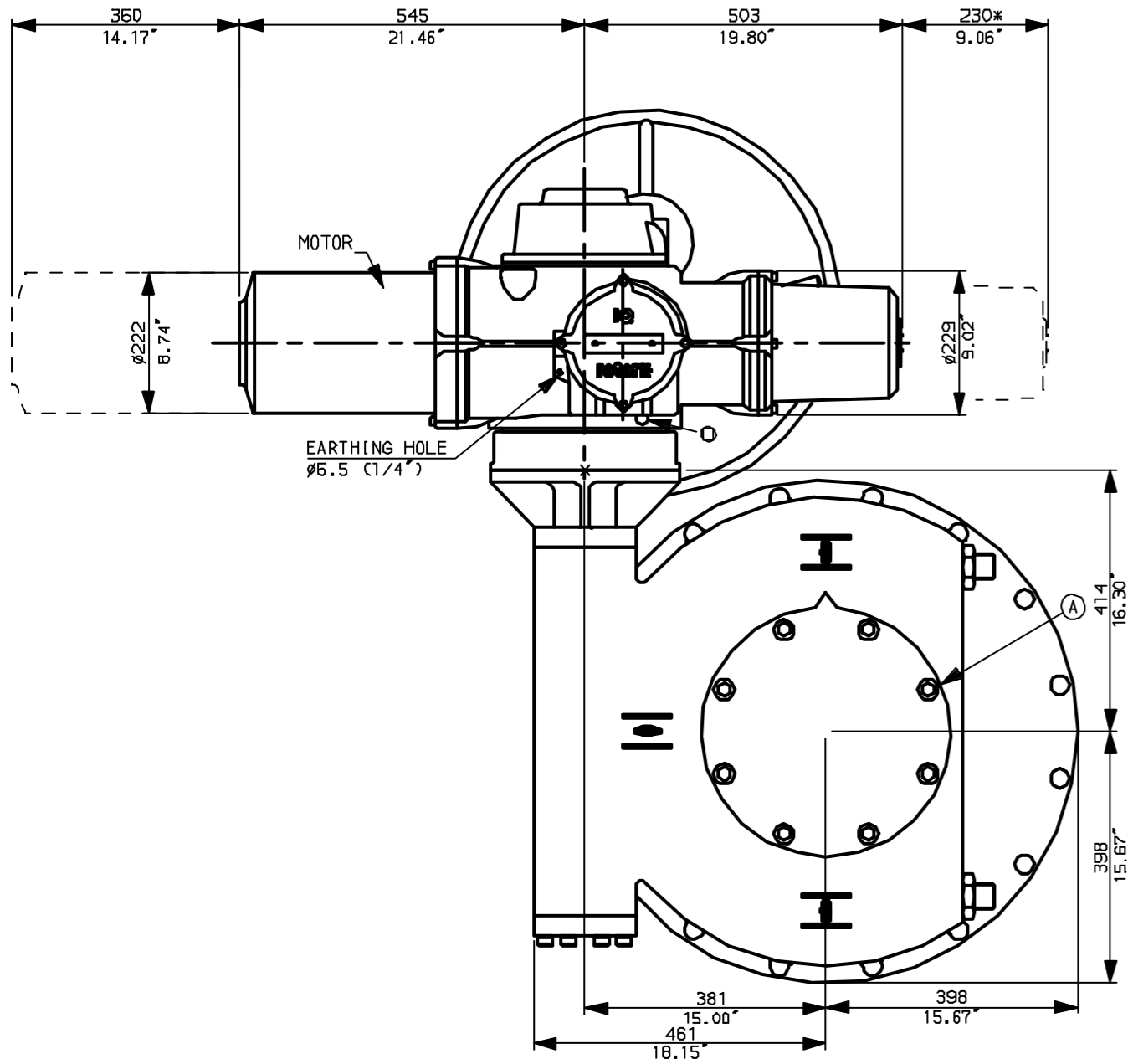
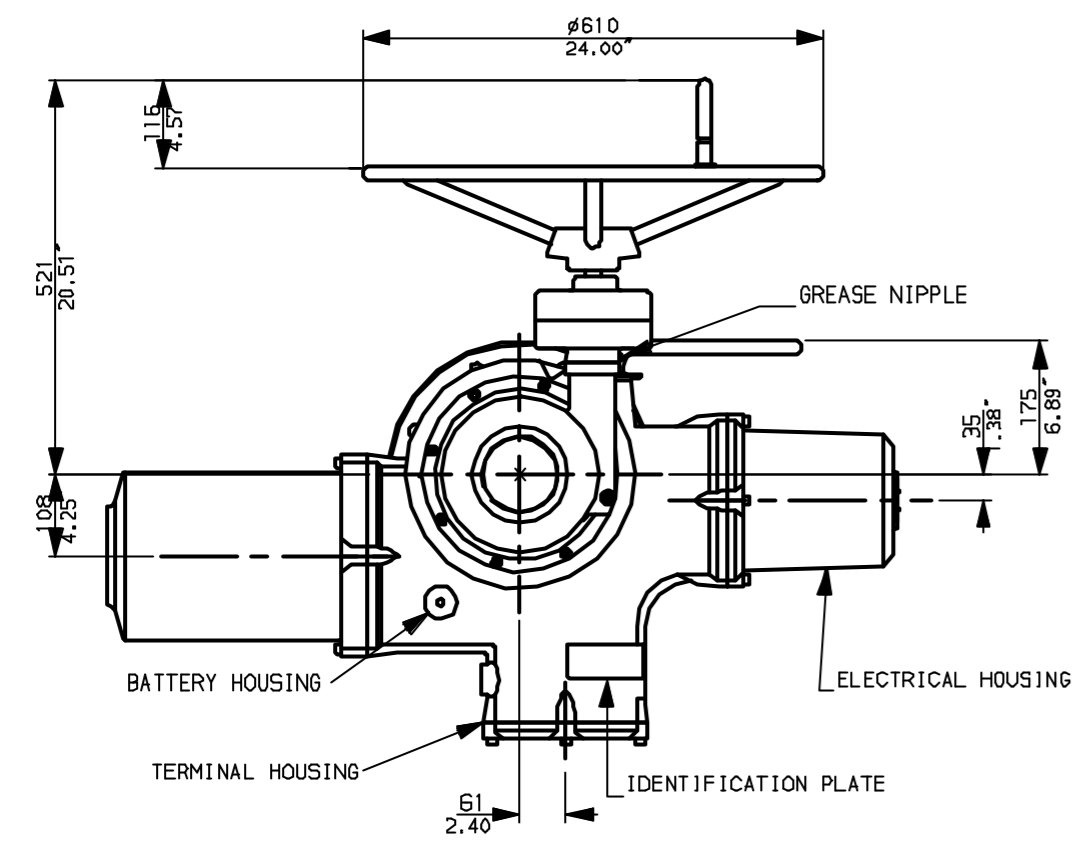


**NOTES:**  
 \* DIMENSIONS WITH '\*' INDICATE COVER REMOVAL ALLOWANCE  
 : NETT WEIGHT = 630kg (1386lbs)  
 : ○ = OIL FILLER/DRAIN PLUG  
 : THE INTERFACE PROVIDED FOR MOUNTING THE ACTUATOR OR SECOND STAGE GEARBOX ONTO THE VALVE SHOULD CONFORM TO GOOD ENGINEERING PRACTICES, ENSURING ADEQUATELY TOLERANCED LIMITS FOR PARALLELISM, PERPENDICULARITY AND CONCENTRICITY.

**CONDUIT ENTRIES** (N.T.S)



Nos.1 & 3 TAPPED 1" NPT  
 No.2 TAPPED 1 1/2" NPT  
 STD ALTERNATIVES IF SPECIFIED  
 2 X M25, 1 X M40  
 2 X PG16, 1 X PG29



**"F" version**  
 8 HOLES TAPPED M36 x 36 DP  
 EQUI-SPACED AS SHOWN ON A  
 406 PCD (ISO 5211-F40).

**"FA" version**  
 8 HOLES TAPPED 1.25" UNC x 1.42" dp  
 EQUI-SPACED AS SHOWN ON A  
 16" PCD (MSS SP101-FA40).



Rotork Controls Ltd.  
 Bath England, BA1 3JQ.  
 (Phone 01225-733200)

Rotork Controls Inc.  
 Rochester, NY 14624  
 (Phone 585-328-1550)

Title IQ91, SSHW, IW11 (+115),  
 STANDARD DIMENSIONAL DATA

Drawn CAD Checked PRE Ref Data Sheet

Date April 04 Job No IQ91SSHW\_IW11

01 Issue	First Issue.
Scale	1:10 THIRD ANGLE PROJECTION
Drawing Number	IQ91SSHW_IW11

1 | 2 | 3 | 4 | 5 | 6 | 7 | 8 | 9 | 10