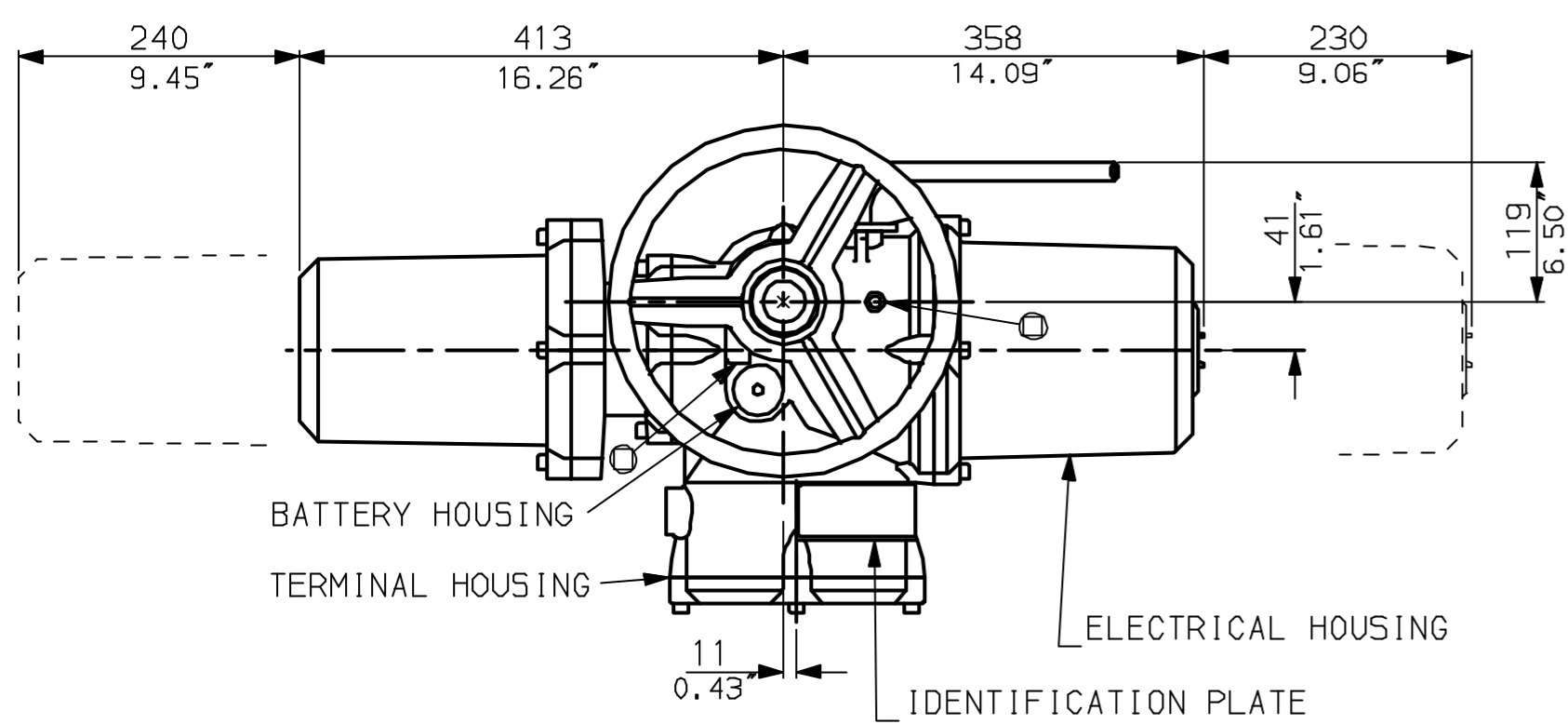
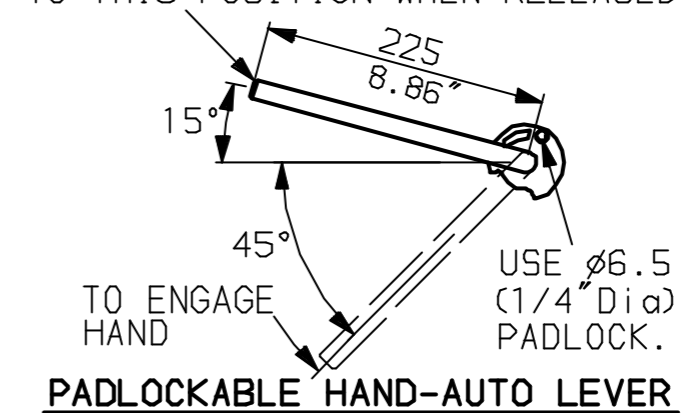


G
F
E
D
C
B
A

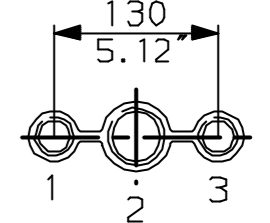


LEVER POSITION IN AUTO.
LEVER AUTOMATICALLY RETURNS
TO THIS POSITION WHEN RELEASED

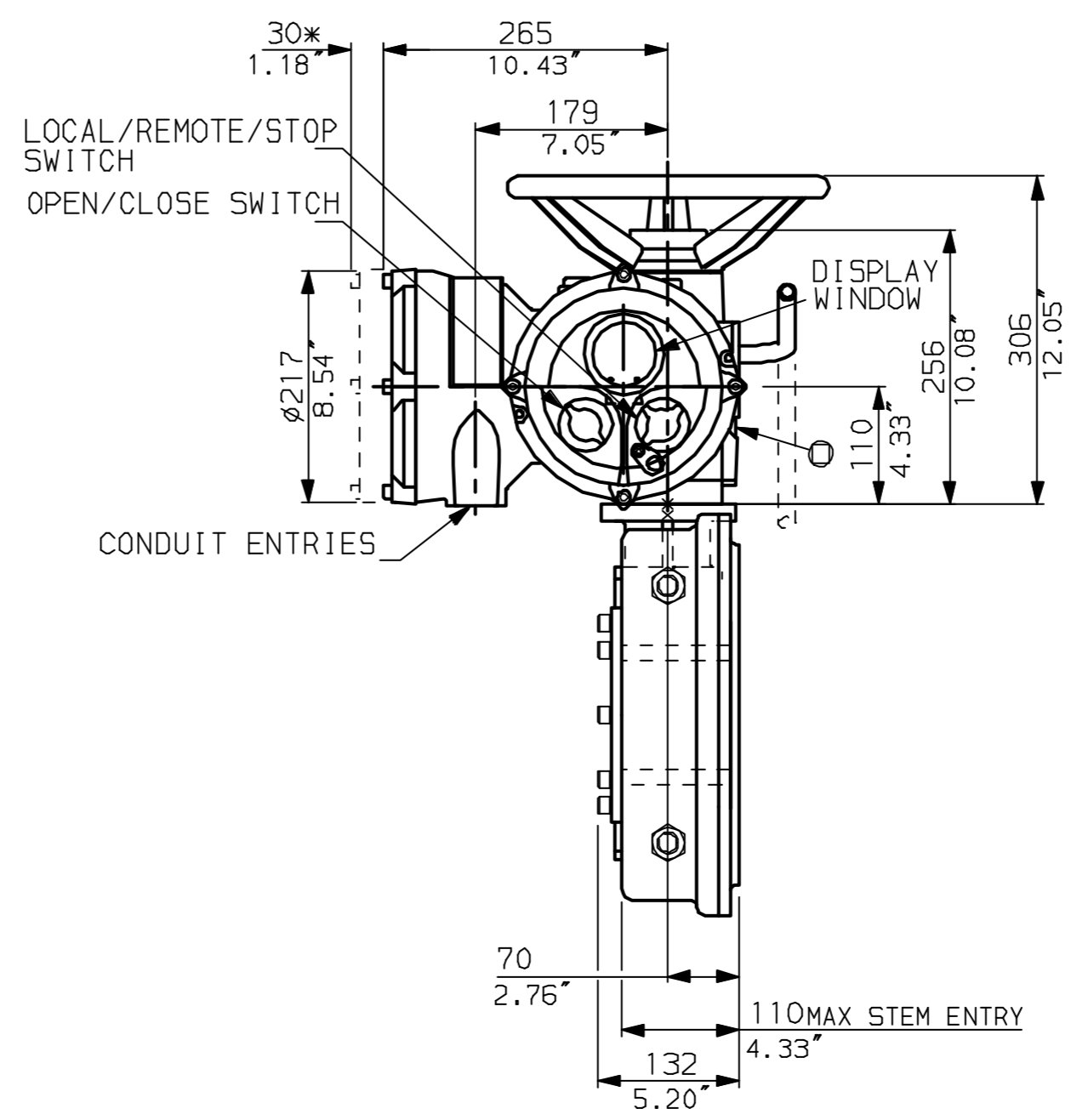
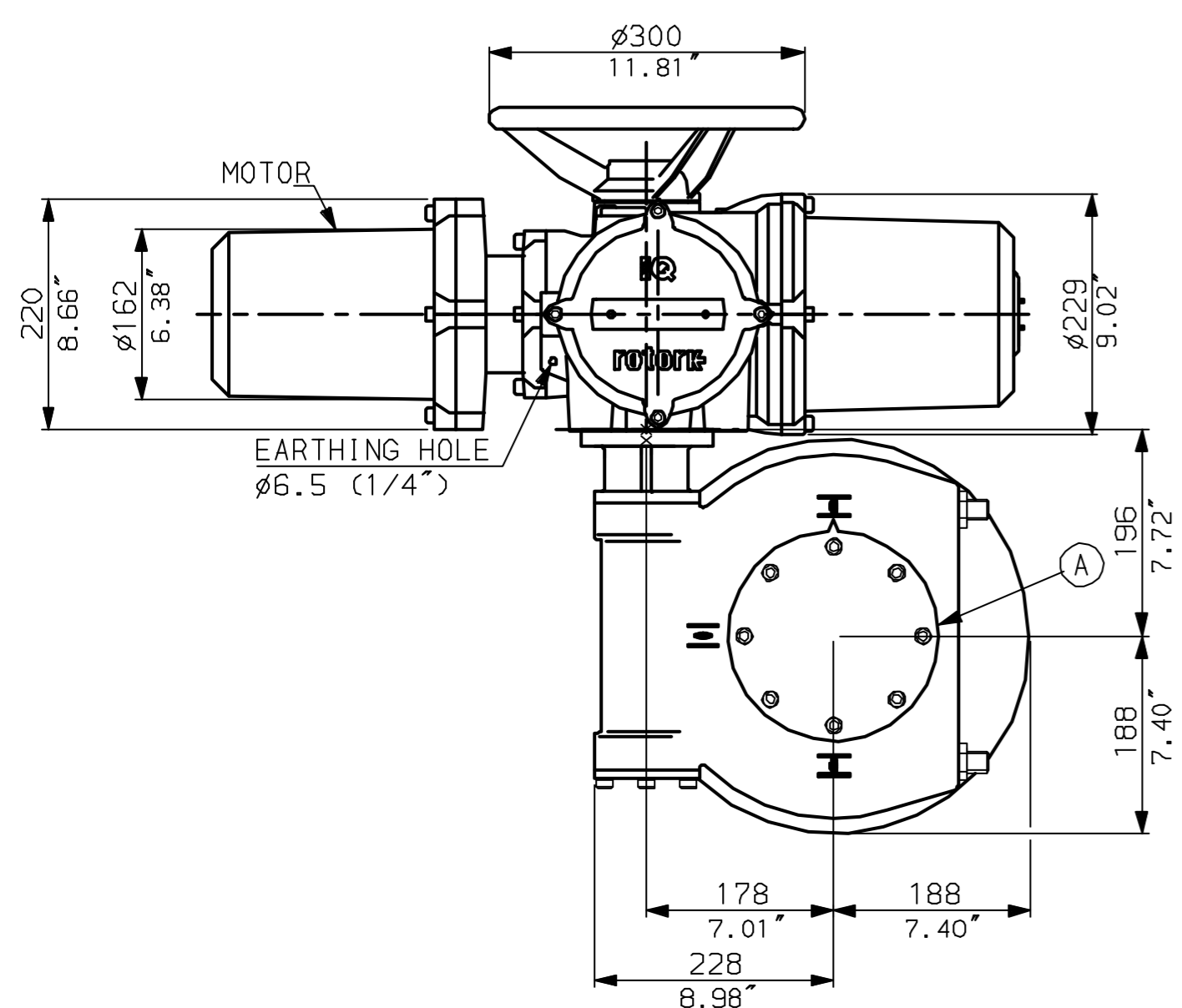


NOTES:
DIMENSIONS WITH '*' INDICATE COVER REMOVAL ALLOWANCE
NETT WEIGHT = 111kg (244lbs)
OIL FILLER/DRAIN PLUG
THE INTERFACE PROVIDED FOR MOUNTING THE ACTUATOR OR SECOND STAGE GEARBOX ONTO THE VALVE SHOULD CONFORM TO GOOD ENGINEERING PRACTICES, ENSURING ADEQUATELY TOLERANCED LIMITS FOR PARALLELISM, PERPENDICULARITY AND CONCENTRICITY.

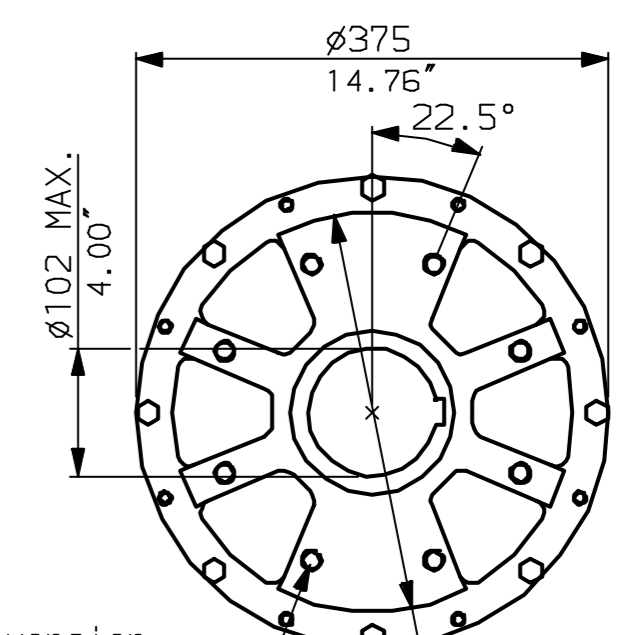
CONDUIT ENTRIES (N.T.S)



Nos.1 & 3 TAPPED 1" NPT
No.2 TAPPED 1 1/2" NPT
STD ALTERNATIVES IF SPECIFIED
2 X M25, 1 X M40
2 X PG16, 1 X PG29



N.B. KEYWAY POS. CAN BE MOVED 90 OR 180° BY REMOVING 8 SCREWS MARKED (A) AND ROTATING OUTPUT SLEEVE.



"F" version
8 HOLES TAPPED M16 x 16 $\phi 318$ EQUI-SPACED AS SHOWN ON A 254 PCD (ISO 5211-F25).

"FA" version
8 HOLES TAPPED 5/8" UNC x 0.63" dp EQUI-SPACED AS SHOWN ON A 10" PCD (M55 SP101-FA25).



Rotork Controls Ltd.
Bath England, BA1 3JQ.
(Phone 01225-733200)

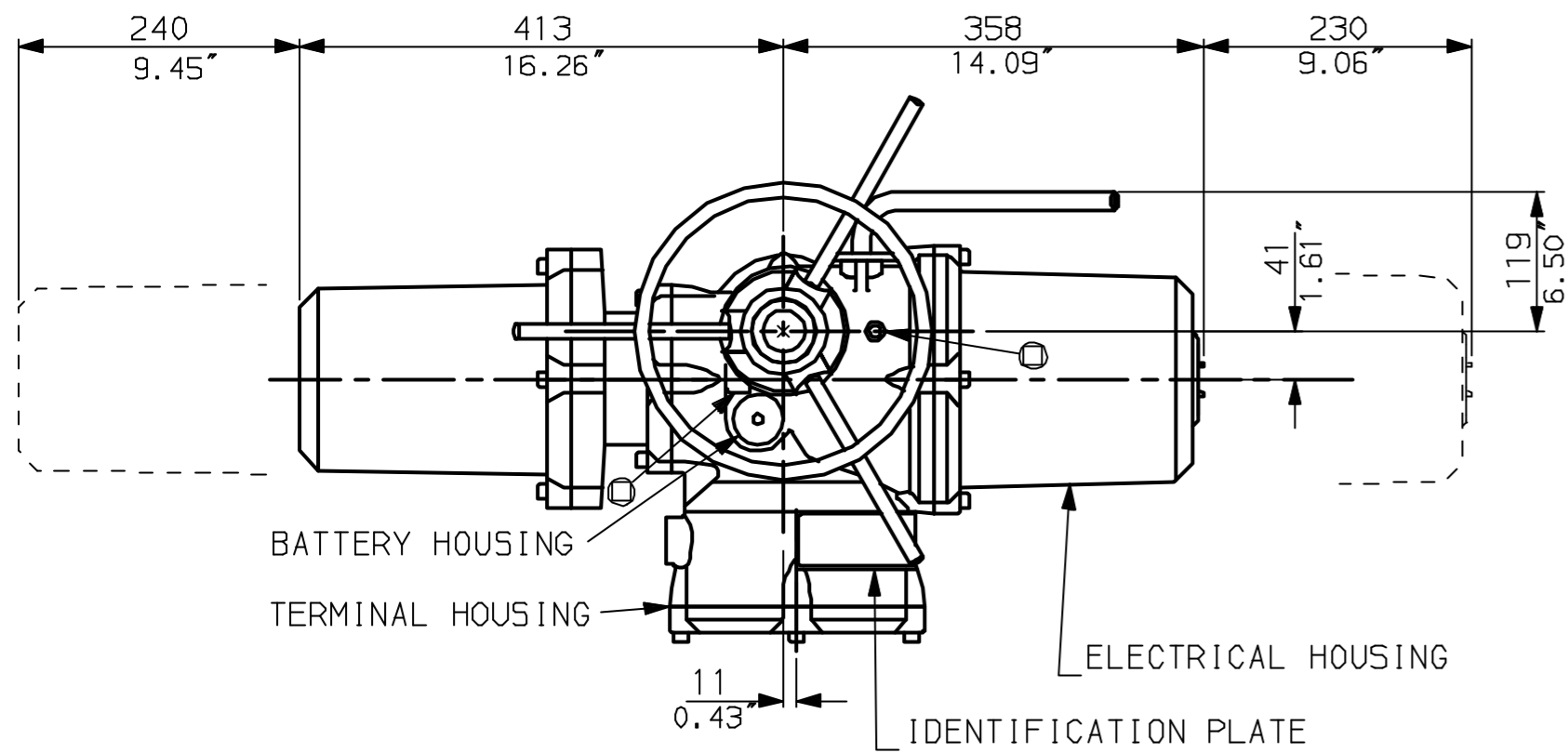
Rotork Controls Inc.
Rochester, NY 14624
(Phone 585-328-1550)

Title IQD10, 12, 18, THW, IW6 (+63),		
STANDARD DIMENSIONAL DATA		
Drawn CAD	Checked PRE	Ref Data Sheet
Date April 04	Job No IQD1THW_IW6	

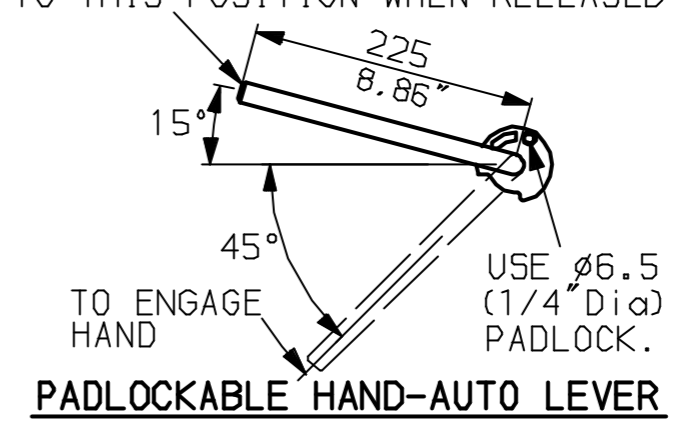
01	First Issue.
Scale 1:6	THIRD ANGLE PROJECTION
Drawing Number	IQD1THW_IW6

1 2 3 4 5 6 7 8 9 10

G
F
E
D
C
B
A

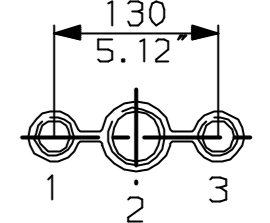


LEVER POSITION IN AUTO.
LEVER AUTOMATICALLY RETURNS
TO THIS POSITION WHEN RELEASED

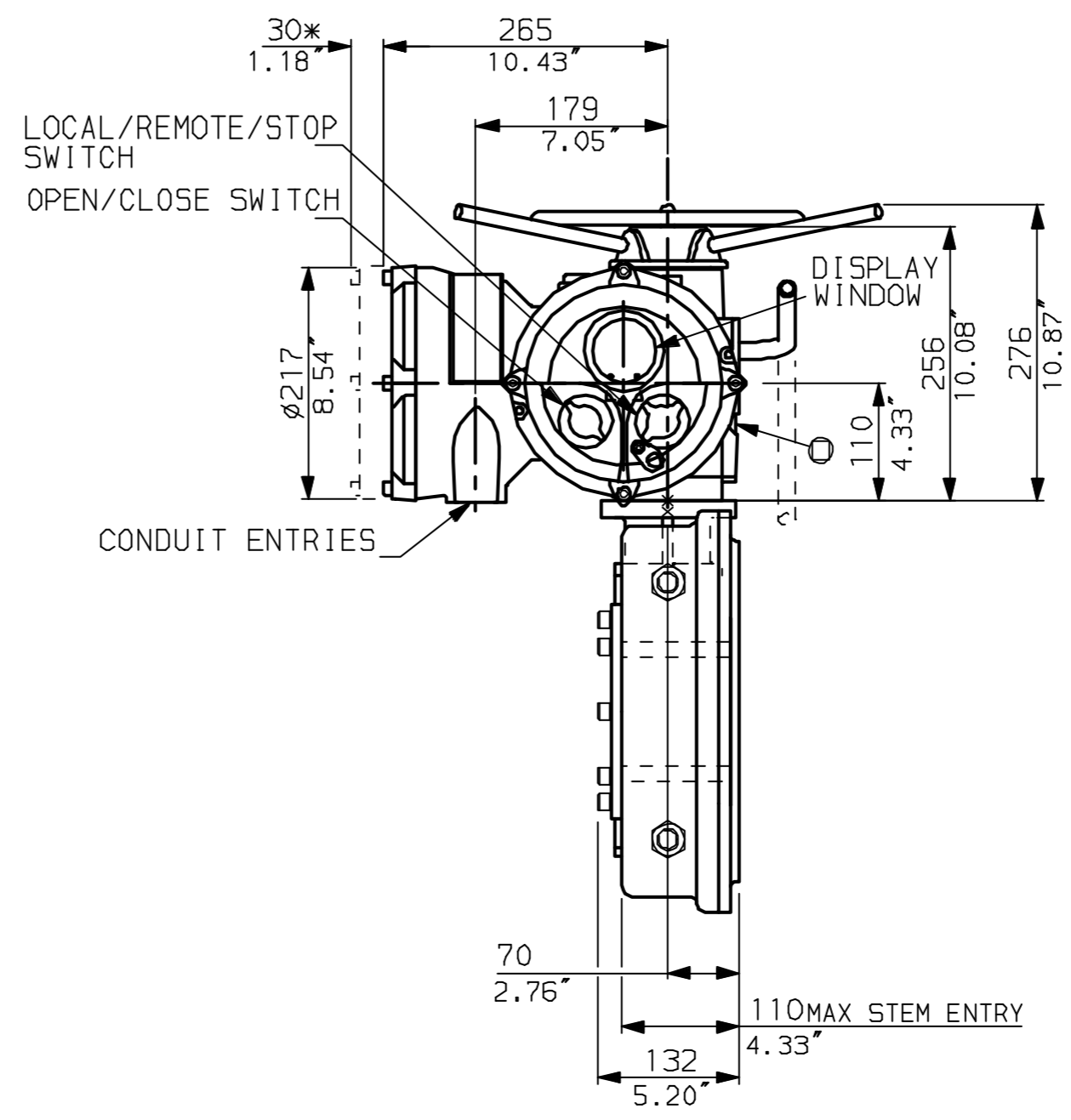
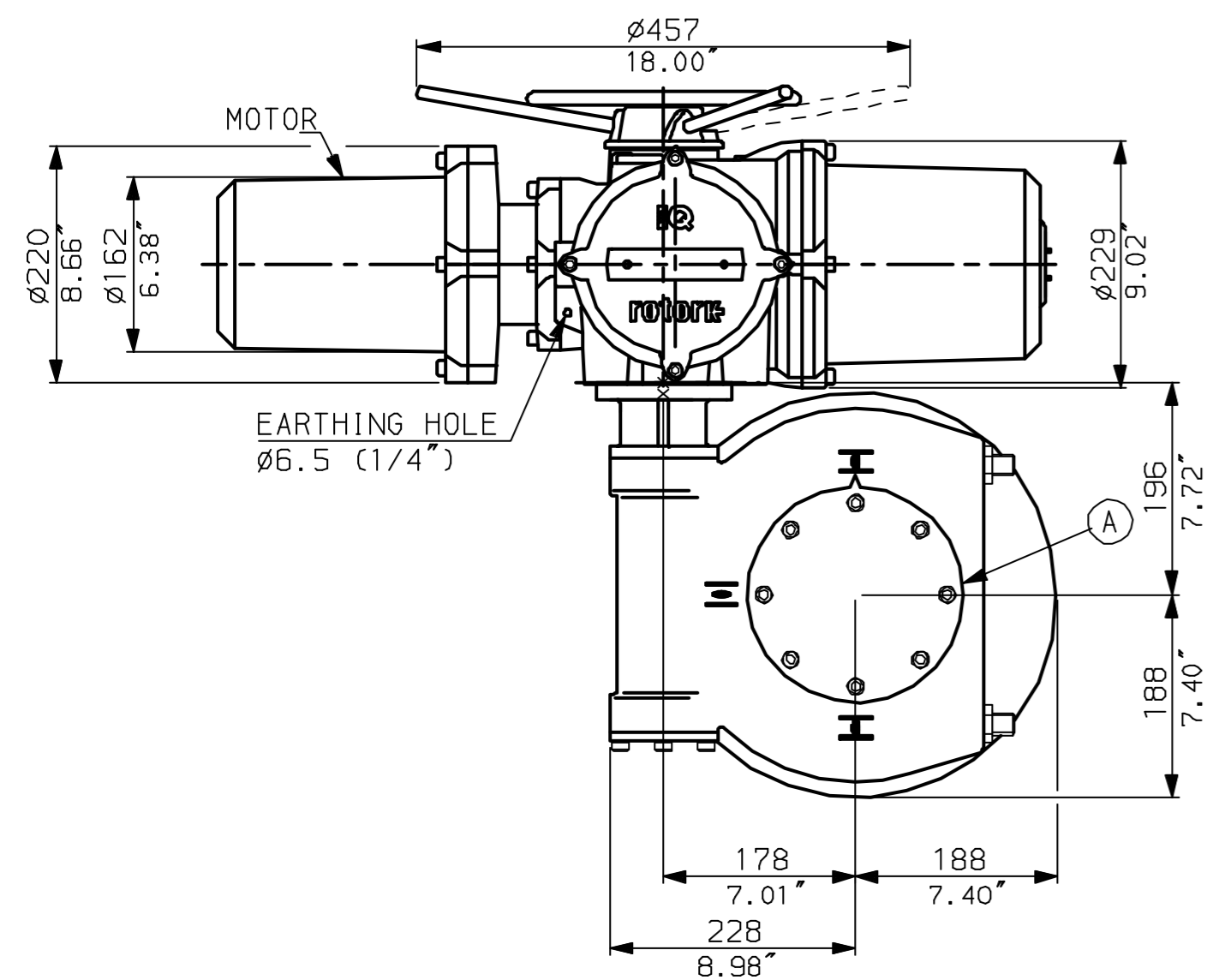


NOTES:
DIMENSIONS WITH '*' INDICATE
COVER REMOVAL ALLOWANCE
NETT WEIGHT = 111kg (244lbs)
OIL FILLER/DRAIN PLUG
THE INTERFACE PROVIDED FOR MOUNTING THE
ACTUATOR OR SECOND STAGE GEARBOX ONTO THE
VALVE SHOULD CONFORM TO GOOD ENGINEERING
PRACTICES, ENSURING ADEQUATELY TOLERANCED
LIMITS FOR PARALLELISM, PERPENDICULARITY
AND CONCENTRICITY.

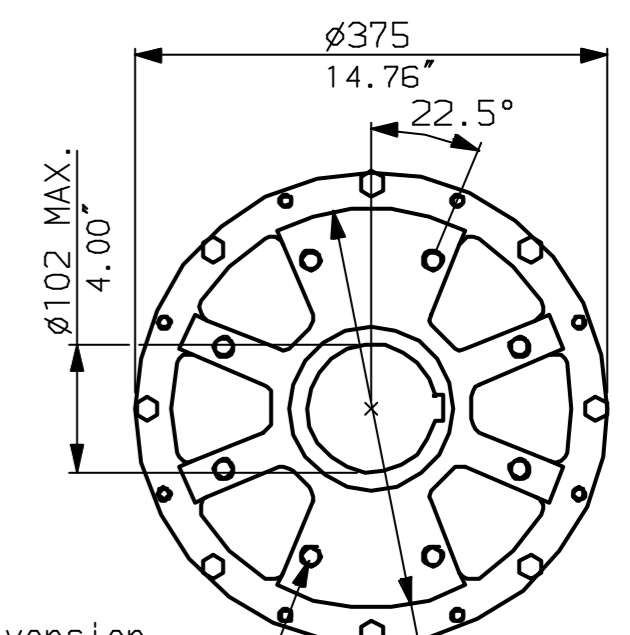
CONDUIT ENTRIES (N.T.S)



Nos.1 & 3 TAPPED 1" NPT
No.2 TAPPED 1 1/2" NPT
STD ALTERNATIVES IF SPECIFIED
2 X M25, 1 X M40
2 X PG16, 1 X PG29



N.B. KEYWAY POS. CAN BE MOVED
90 OR 180° BY REMOVING 8 SCREWS
MARKED (A) AND ROTATING OUTPUT
SLEEVE.



"F" version
8 HOLES TAPPED M16 x 16 DP
EQUI-SPACED AS SHOWN ON A
254 PCD (ISO 5211-F25).

"FA" version
8 HOLES TAPPED 5/8" UNC x 0.63" dp
EQUI-SPACED AS SHOWN ON A
10" PCD (MSS 5P101-FA25).



Rotork Controls Ltd.
Bath England, BA1 3JQ.
(Phone 01225-733200)

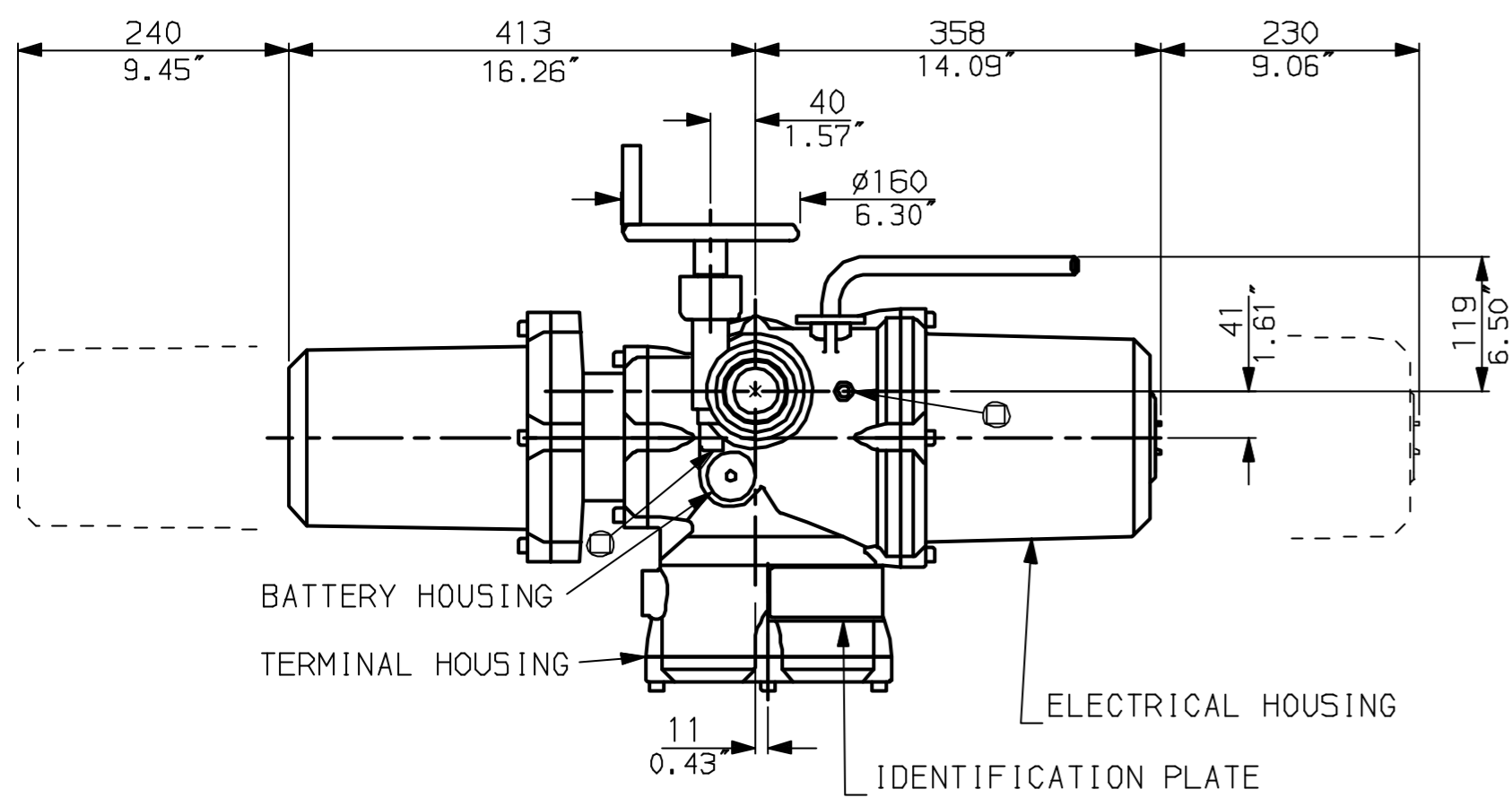
Rotork Controls Inc.
Rochester, NY 14624
(Phone 585-328-1550)

Title IQD10, 12, 18, LTHW, IW6 (+63),		
STANDARD DIMENSIONAL DATA		
Drawn CAD	Checked PRE	Ref Data Sheet
Date April 04	Job No IQD1LTHW_IW6	

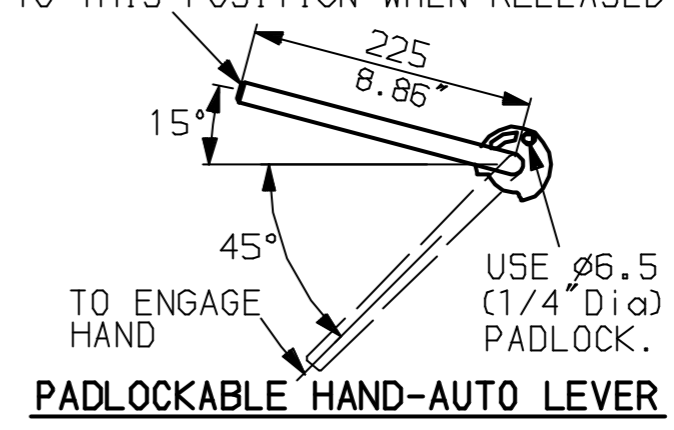
01	First Issue.
Scale	1:6 THIRD ANGLE PROJECTION
Drawing Number	IQD1LTHW_IW6

1 | 2 | 3 | 4 | 5 | 6 | 7 | 8 | 9 | 10

G
F
E
D
C
B
A

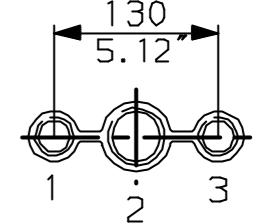


LEVER POSITION IN AUTO.
LEVER AUTOMATICALLY RETURNS
TO THIS POSITION WHEN RELEASED

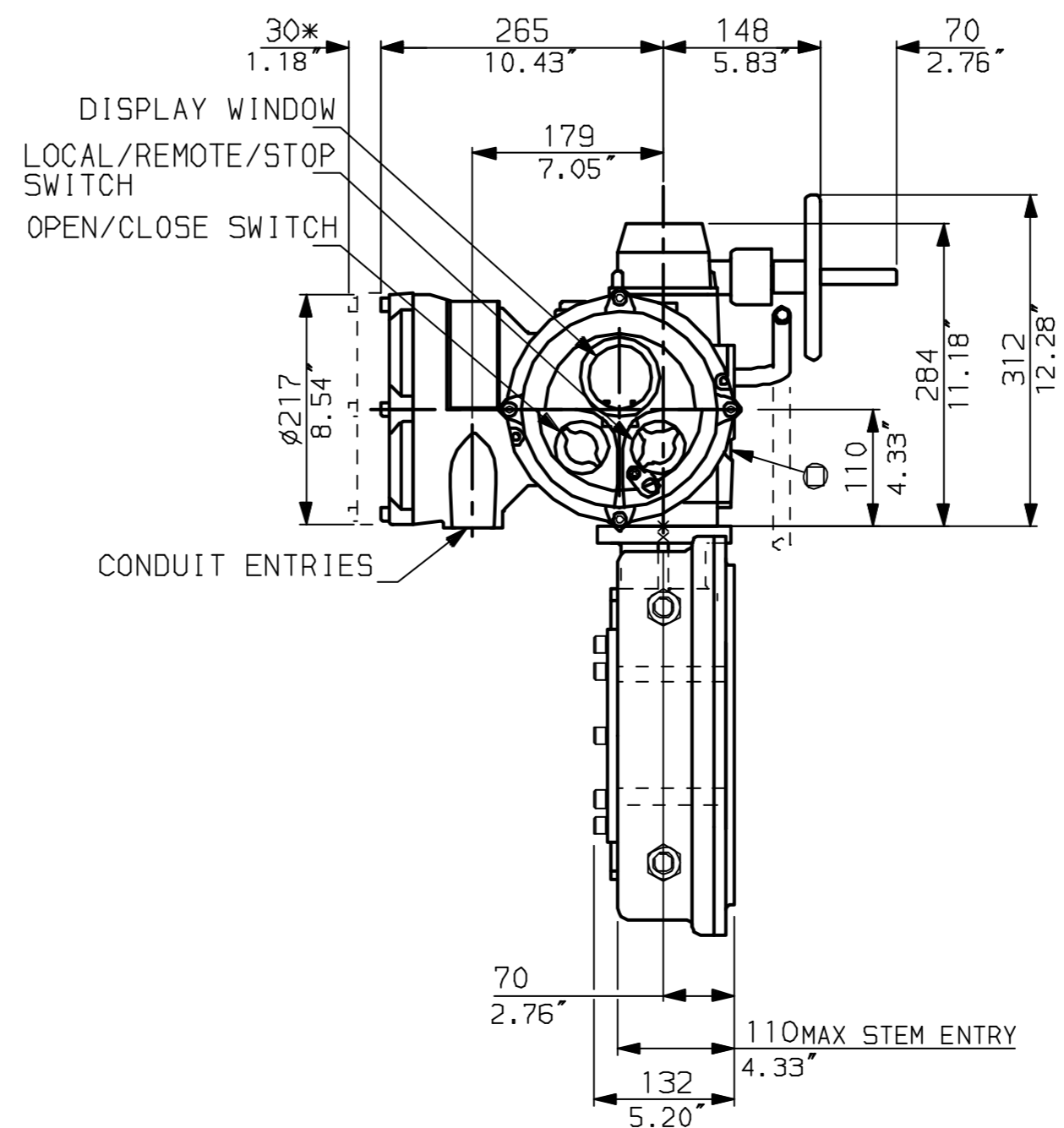
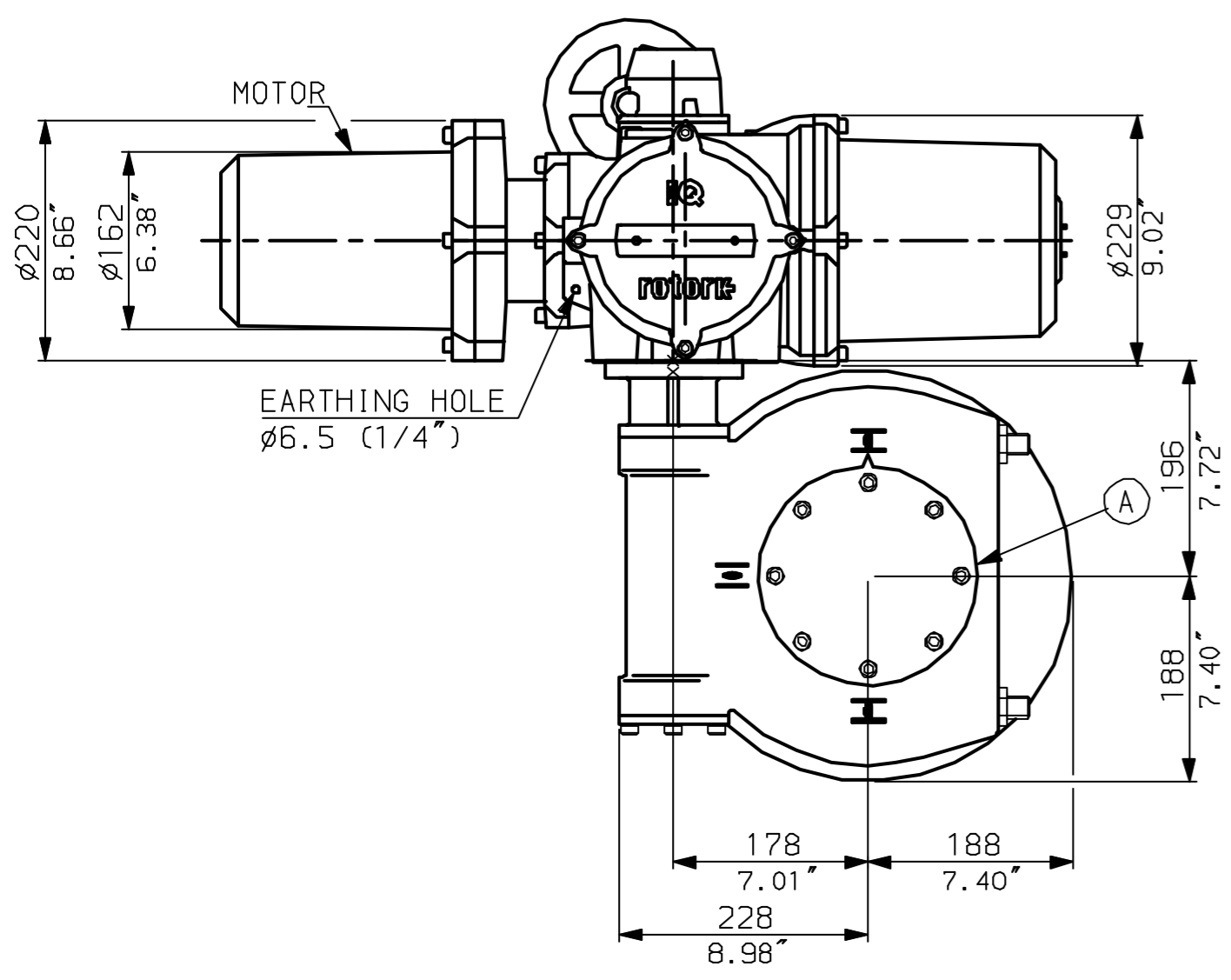


NOTES:
DIMENSIONS WITH '*' INDICATE COVER REMOVAL ALLOWANCE
NETT WEIGHT = 111kg (244lbs)
⊙ = OIL FILLER/DRAIN PLUG
THE INTERFACE PROVIDED FOR MOUNTING THE ACTUATOR OR SECOND STAGE GEARBOX ONTO THE VALVE SHOULD CONFORM TO GOOD ENGINEERING PRACTICES, ENSURING ADEQUATELY TOLERANCED LIMITS FOR PARALLELISM, PERPENDICULARITY AND CONCENTRICITY.

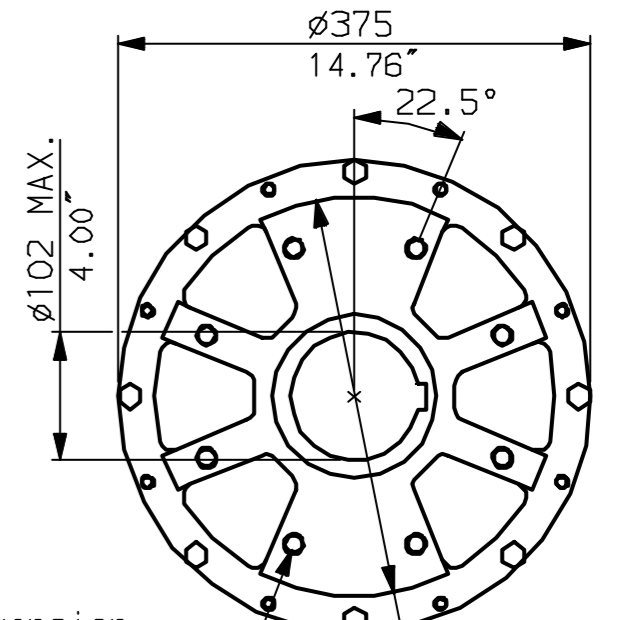
CONDUIT ENTRIES (N.T.S)



Nos.1 & 3 TAPPED 1" NPT
No.2 TAPPED 1 1/2" NPT
STD ALTERNATIVES IF SPECIFIED
2 X M25, 1 X M40
2 X PG16, 1 X PG29



N.B. KEYWAY POS. CAN BE MOVED 90 OR 180° BY REMOVING 8 SCREWS MARKED (A) AND ROTATING OUTPUT SLEEVE.



"F" version
8 HOLES TAPPED M16 x 16 dp $\phi 318$
EQUI-SPACED AS SHOWN ON A2.52"
254 PCD (ISO 5211-F25).

"FA" version
8 HOLES TAPPED 5/8" UNC x 0.63" dp
EQUI-SPACED AS SHOWN ON A
10" PCD (M55 SP101-FA25).



Rotork Controls Ltd.
Bath England, BA1 3JQ.
(Phone 01225-733200)
Rotork Controls Inc.
Rochester, NY 14624
(Phone 585-328-1550)

Title IQD10, 12, 18, SHW, IW6 (+63),		
STANDARD DIMENSIONAL DATA		
Drawn CAD	Checked PRE	Ref Data Sheet
Date April 04	Job No IQD1SHW_IW6	

01	First Issue.
Scale 1:6	THIRD ANGLE PROJECTION
Drawing Number	IQD1SHW_IW6

1 | 2 | 3 | 4 | 5 | 6 | 7 | 8 | 9 | 10