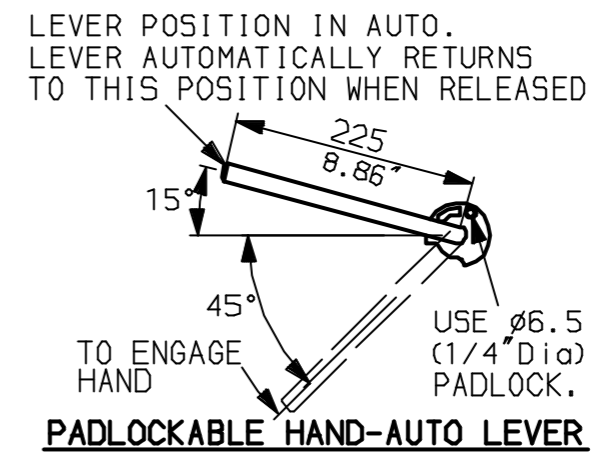
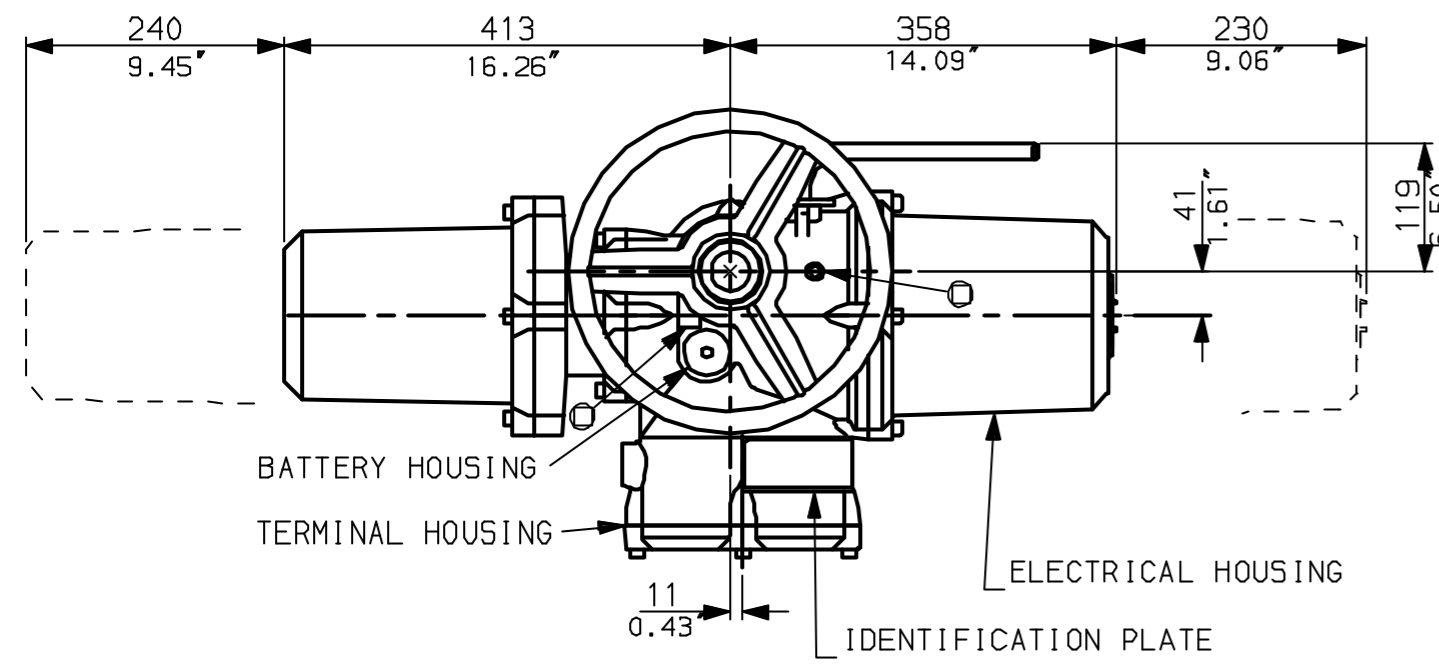
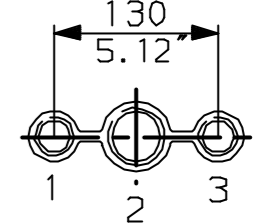


G  
F  
E  
D  
C  
B  
A

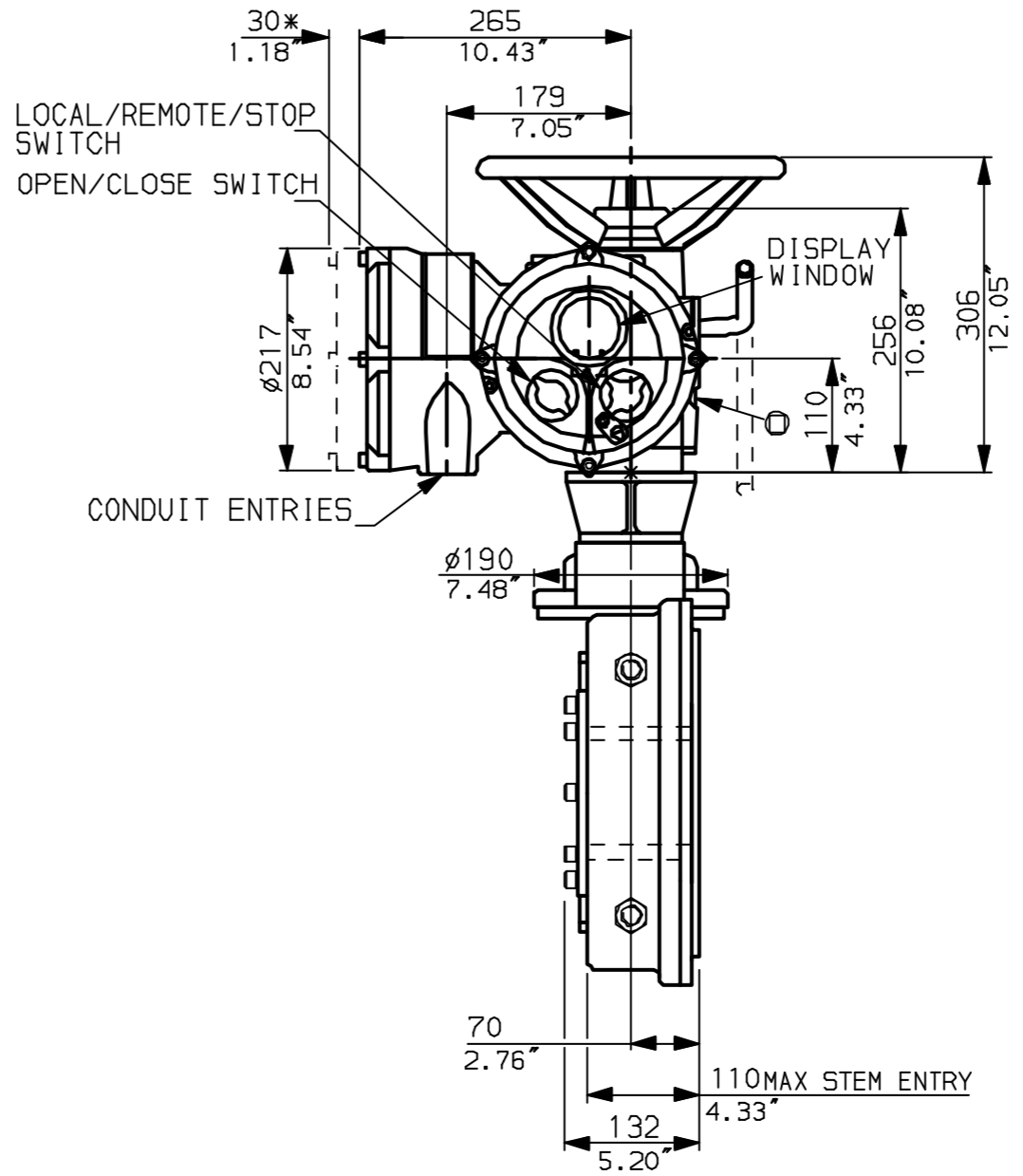
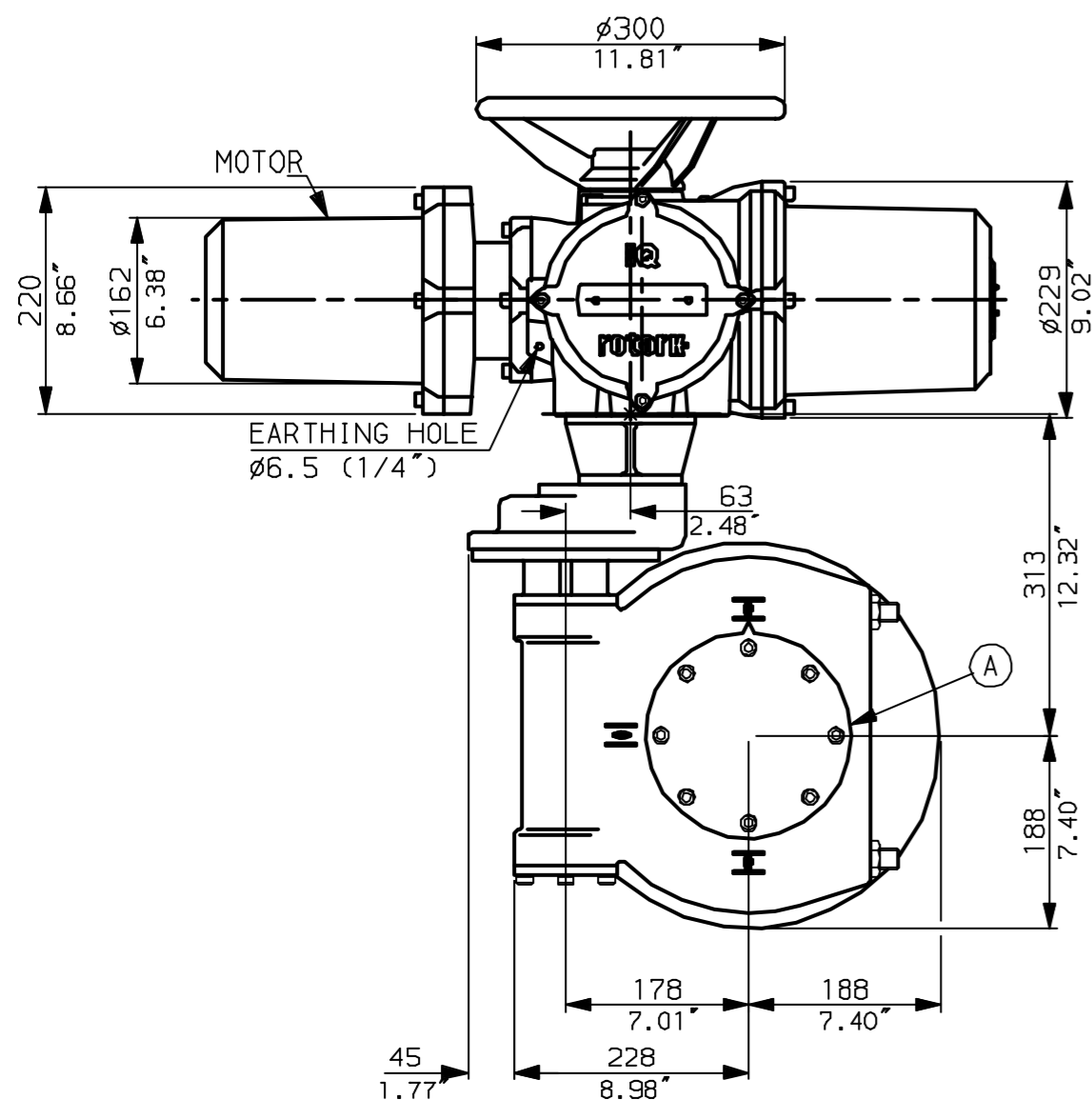


NOTES:  
 \* DIMENSIONS WITH '\*' INDICATE COVER REMOVAL ALLOWANCE  
 : NETT WEIGHT = 122kg (268lbs)  
 : = OIL FILLER/DRAIN PLUG  
 : THE INTERFACE PROVIDED FOR MOUNTING THE ACTUATOR OR SECOND STAGE GEARBOX ONTO THE VALVE SHOULD CONFORM TO GOOD ENGINEERING PRACTICES, ENSURING ADEQUATELY TOLERANCED LIMITS FOR PARALLELISM, PERPENDICULARITY AND CONCENTRICITY.

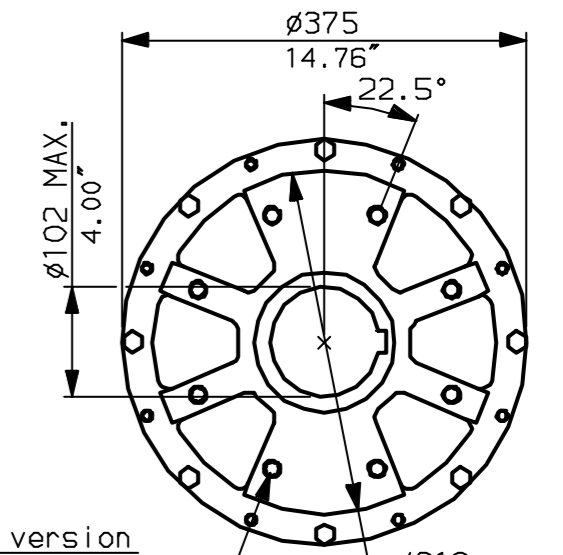
**CONDUIT ENTRIES** (N.T.S)



Nos.1 & 3 TAPPED 1" NPT  
 No.2 TAPPED 1 1/2" NPT  
 STD ALTERNATIVES IF SPECIFIED  
 2 X M25, 1 X M40  
 2 X PG16, 1 X PG29



N.B. KEYWAY POS. CAN BE MOVED 90 OR 180° BY REMOVING 8 SCREWS MARKED (A) AND ROTATING OUTPUT SLEEVE.



"F" version  
 8 HOLES TAPPED M16 x 16 dp Ø318 EQUI-SPACED AS SHOWN ON A 2.52" 254 PCD (150 5211-F25).  
 "FA" version  
 8 HOLES TAPPED 5/8" UNC x 0.63" dp EQUI-SPACED AS SHOWN ON A 10" PCD (M55 SP101-FA25).



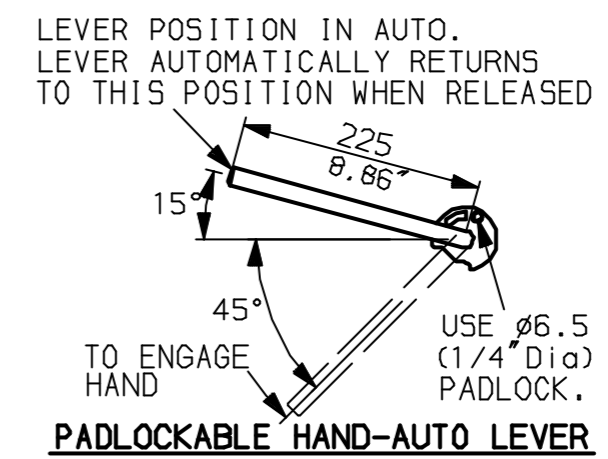
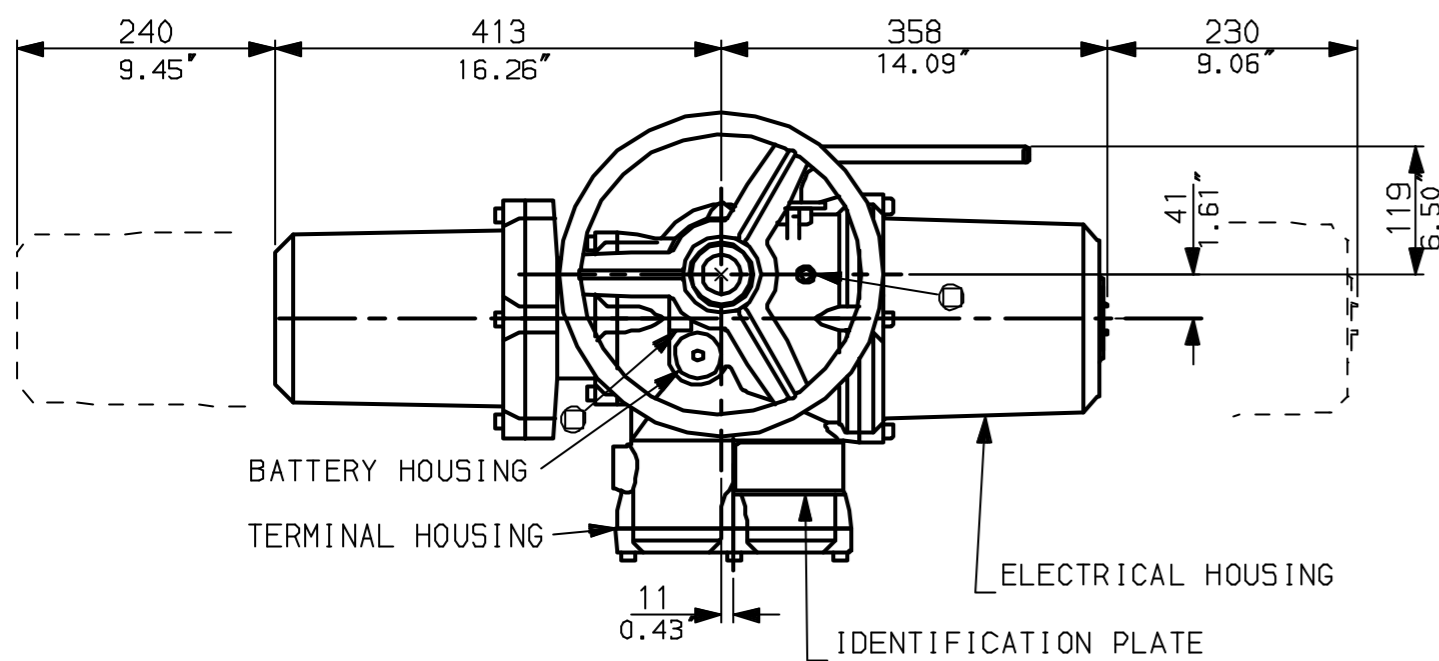
Rotork Controls Ltd.  
 Bath England, BA1 3JQ.  
 (Phone 01225-733200)  
 Rotork Controls Inc.  
 Rochester, NY 14624  
 (Phone 585-328-1550)

|   |             |                |
|---|-------------|----------------|
| Title IQD10, 12, 18, THW, IW6 (+63) RL, |             |                |
| STANDARD DIMENSIONAL DATA               |             |                |
| Drawn CAD                               | Checked PRE | Ref Data Sheet |
| Date April 04                           | Job No      | IQD1THW_IW6R   |

NOTE:  
 Gearbox is shown with LOW Ratio Input Reducer.  
 (ie Ratios 140, 210, 280)  
 See Data Sheet with IW6Rh for HIGH ratio option.

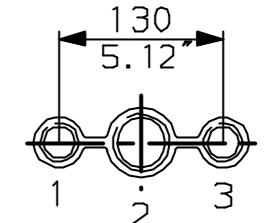
|                |                            |
|----------------|----------------------------|
| 01             | First Issue.               |
| Scale          | 1:7 THIRD ANGLE PROJECTION |
| Drawing Number | IQD1THW_IW6RL              |

1 | 2 | 3 | 4 | 5 | 6 | 7 | 8 | 9 | 10

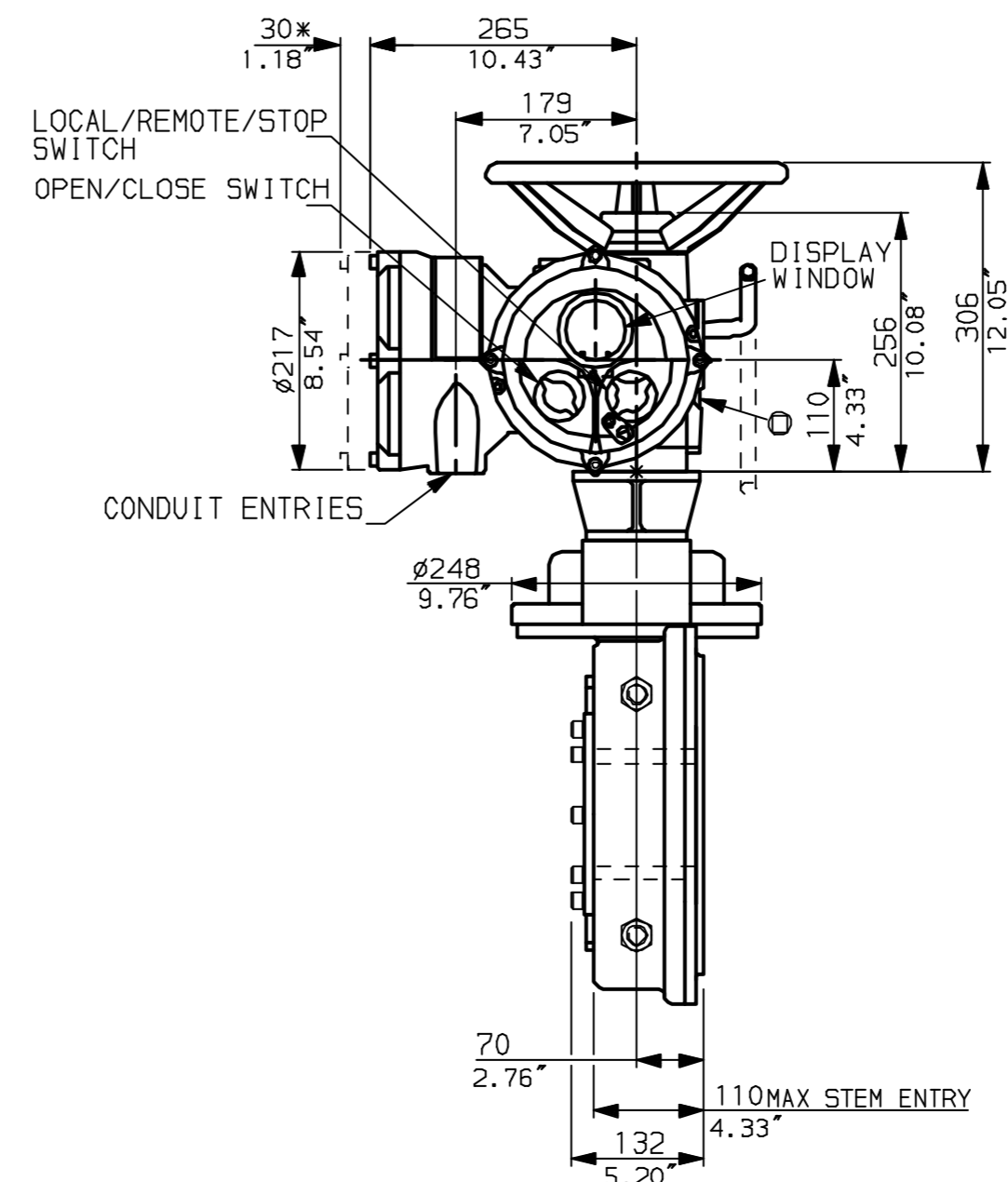
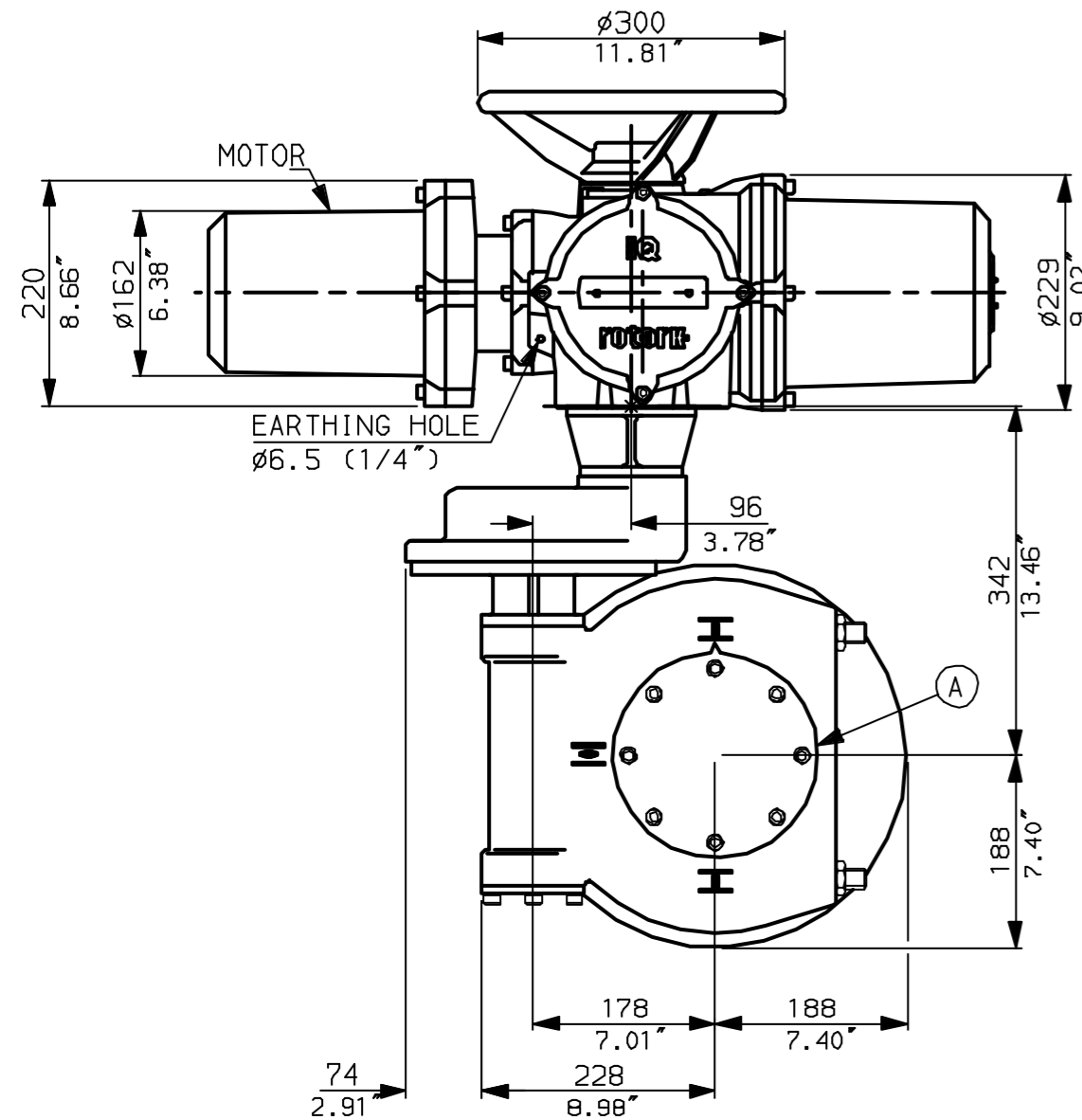


NOTES:  
 \* DIMENSIONS WITH '\*' INDICATE COVER REMOVAL ALLOWANCE  
 : NETT WEIGHT = 127kg (279lbs)  
 : = OIL FILLER/DRAIN PLUG  
 : THE INTERFACE PROVIDED FOR MOUNTING THE ACTUATOR OR SECOND STAGE GEARBOX ONTO THE VALVE SHOULD CONFORM TO GOOD ENGINEERING PRACTICES, ENSURING ADEQUATELY TOLERANCED LIMITS FOR PARALLELISM, PERPENDICULARITY AND CONCENTRICITY.

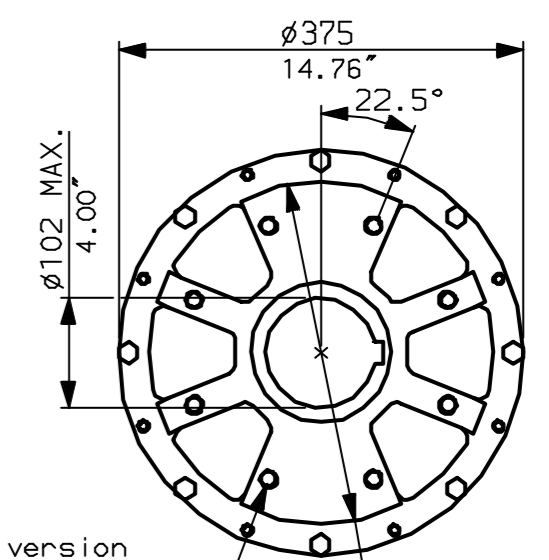
**CONDUIT ENTRIES** (N.T.S)



Nos.1 & 3 TAPPED 1" NPT  
 No.2 TAPPED 1 1/2" NPT  
 STD ALTERNATIVES IF SPECIFIED  
 2 X M25, 1 X M40  
 2 X PG16, 1 X PG29



N.B. KEYWAY POS. CAN BE MOVED 90 OR 180° BY REMOVING 8 SCREWS MARKED (A) AND ROTATING OUTPUT SLEEVE.



"F" version  
 8 HOLES TAPPED M16 x 16 L Ø318  
 EQUI-SPACED AS SHOWN ON A  
 254 PCD (ISO 5211-F25).  
 "FA" version  
 8 HOLES TAPPED 5/8" UNC x 0.63" dp  
 EQUI-SPACED AS SHOWN ON A  
 10" PCD (MSS SP101-FA25).

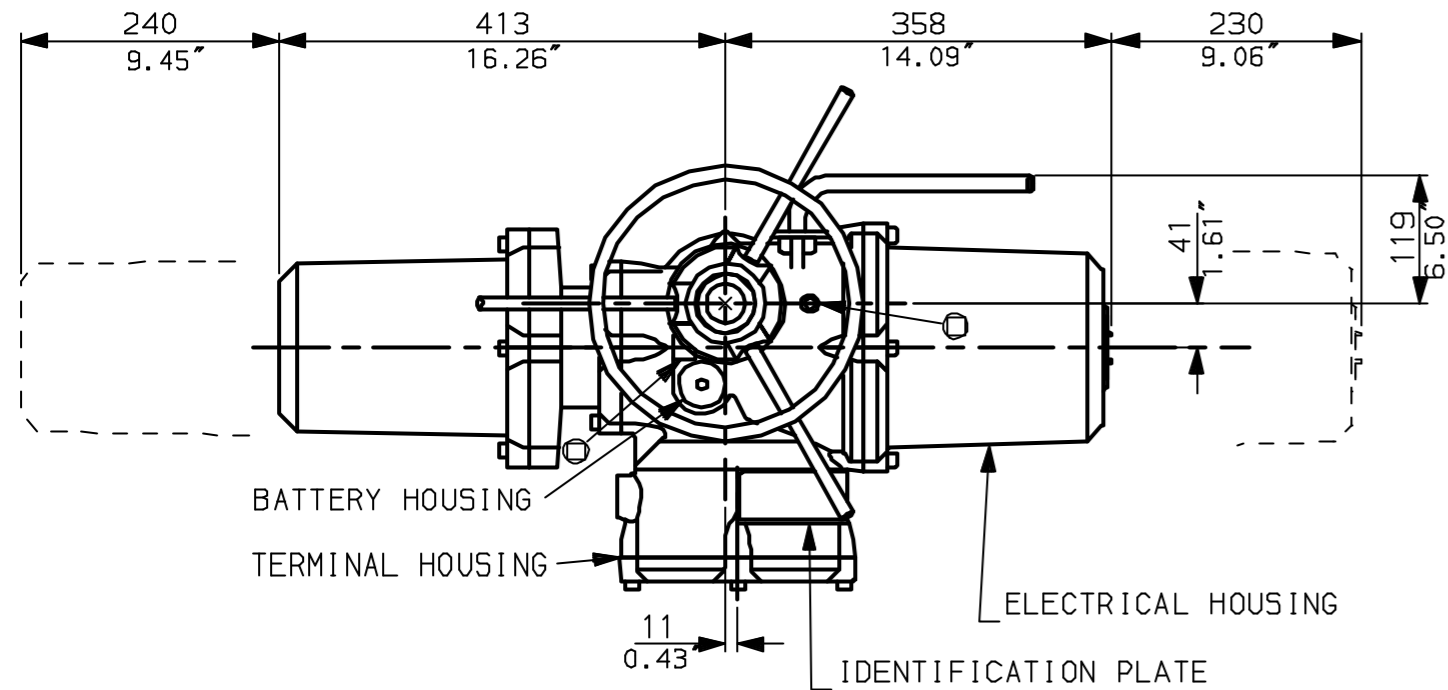
NOTE:  
 Gearbox is shown with HIGH Ratio Input Reducer.  
 (ie Ratios 350, 420)  
 See Data Sheet with IW6RL for LOW ratio option.

**rotork**  
 www.rotork.com

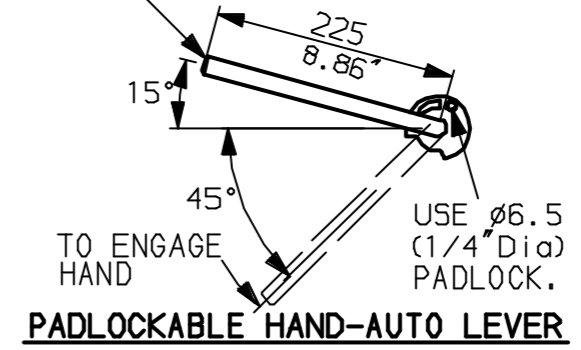
Rotork Controls Ltd.  
 Bath England, BA1 3JQ.  
 (Phone 01225-733200)  
 Rotork Controls Inc.  
 Rochester, NY 14624  
 (Phone 585-328-1550)

|   |             |                |
|---|-------------|----------------|
| Title IQD10, 12, 18, THW, IW6 (+63) Rh, |             |                |
| STANDARD DIMENSIONAL DATA               |             |                |
| Drawn CAD                               | Checked PRE | Ref Data Sheet |
| Date April 04                           | Job No      | IQD1THW_IW6Rh  |

|                |                            |
|----------------|----------------------------|
| 01             | First Issue.               |
| Scale          | 1:7 THIRD ANGLE PROJECTION |
| Drawing Number | IQD1THW_IW6Rh              |

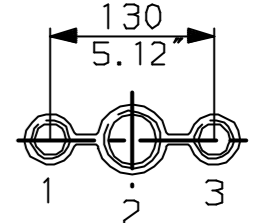


LEVER POSITION IN AUTO.  
LEVER AUTOMATICALLY RETURNS  
TO THIS POSITION WHEN RELEASED

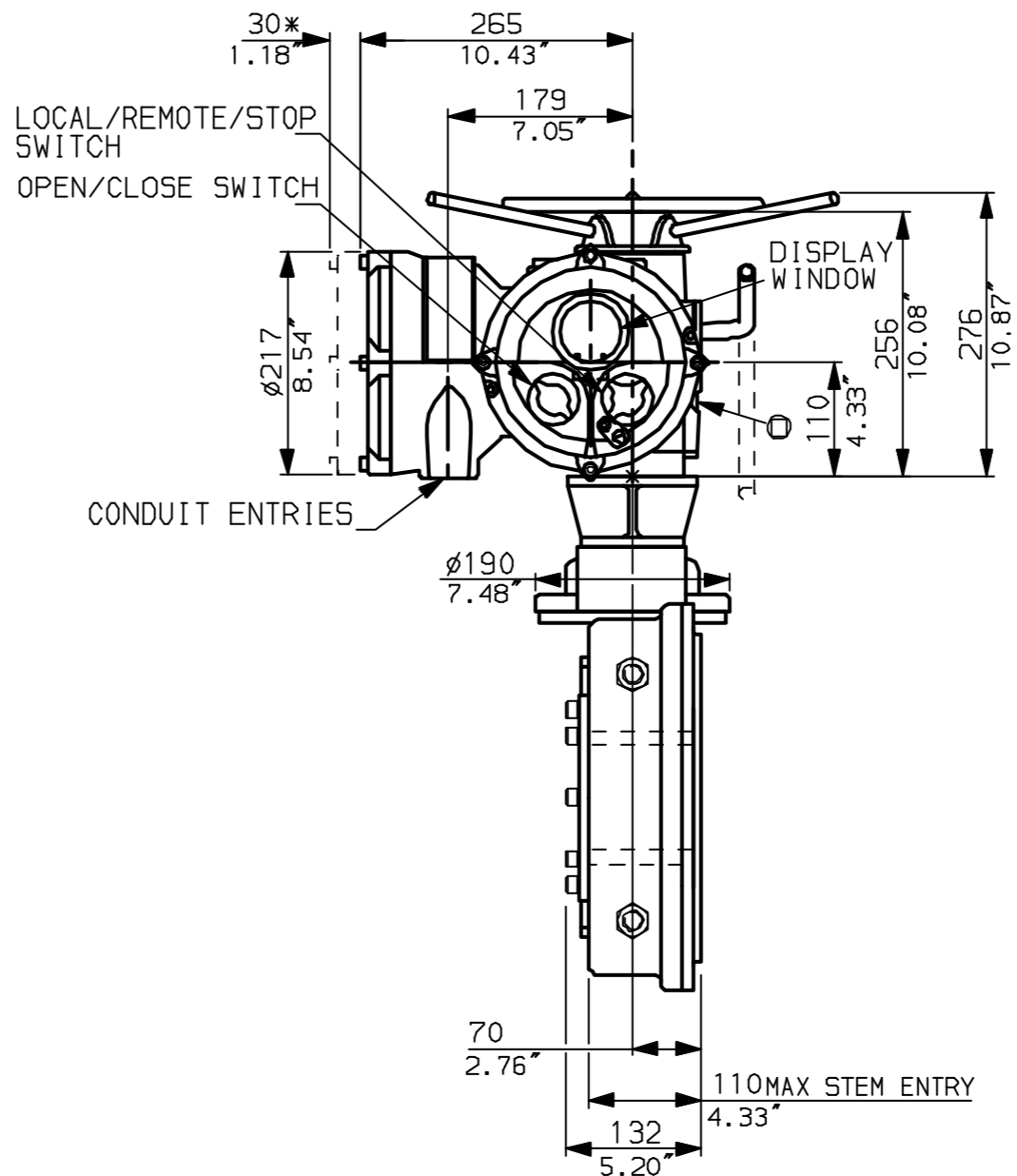
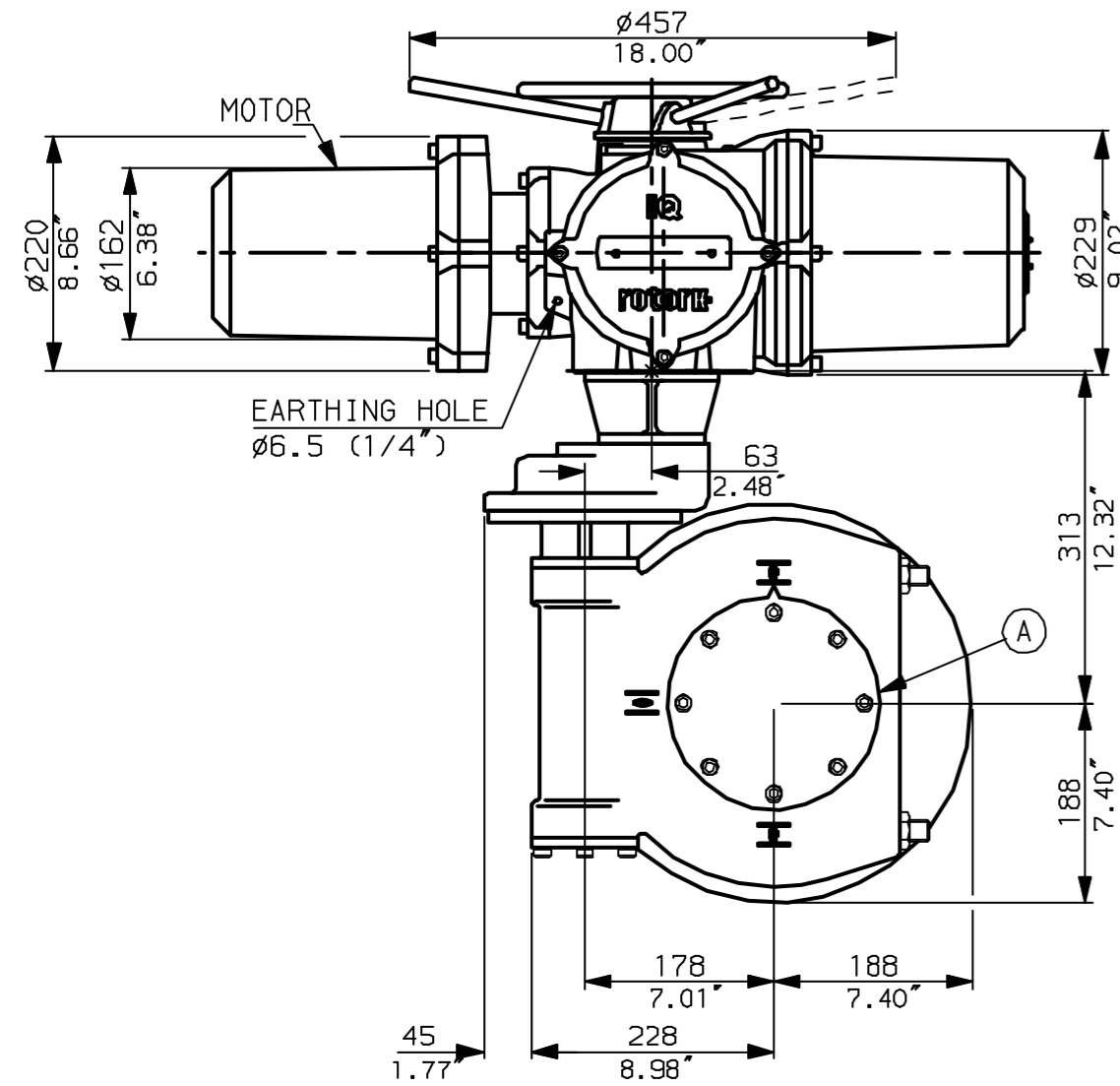


NOTES:  
DIMENSIONS WITH '\*' INDICATE  
COVER REMOVAL ALLOWANCE  
NETT WEIGHT = 122kg (268lbs)  
⊙ = OIL FILLER/DRAIN PLUG  
THE INTERFACE PROVIDED FOR MOUNTING THE  
ACTUATOR OR SECOND STAGE GEARBOX ONTO THE  
VALVE SHOULD CONFORM TO GOOD ENGINEERING  
PRACTICES, ENSURING ADEQUATELY TOLERANCED  
LIMITS FOR PARALLELISM, PERPENDICULARITY  
AND CONCENTRICITY.

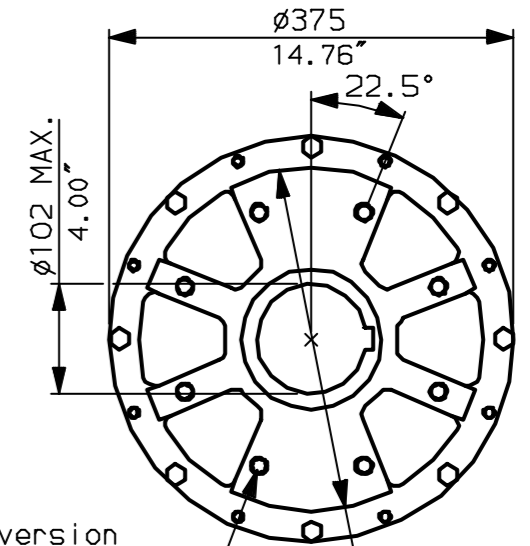
**CONDUIT ENTRIES** (N.T.S)



Nos.1 & 3 TAPPED 1" NPT  
No.2 TAPPED 1 1/2" NPT  
STD ALTERNATIVES IF SPECIFIED  
2 X M25, 1 X M40  
2 X PG16, 1 X PG29



N.B. KEYWAY POS. CAN BE MOVED  
90 OR 180° BY REMOVING 8 SCREWS  
MARKED (A) AND ROTATING OUTPUT  
SLEEVE.



"F" version  
8 HOLES TAPPED M16 x 16 dp  
EQUI-SPACED AS SHOWN ON A 2.52"  
254 PCD (ISO 5211-F25).  
"FA" version  
8 HOLES TAPPED 5/8" UNC x 0.63" dp  
EQUI-SPACED AS SHOWN ON A  
10" PCD (MSS SP101-FA25).

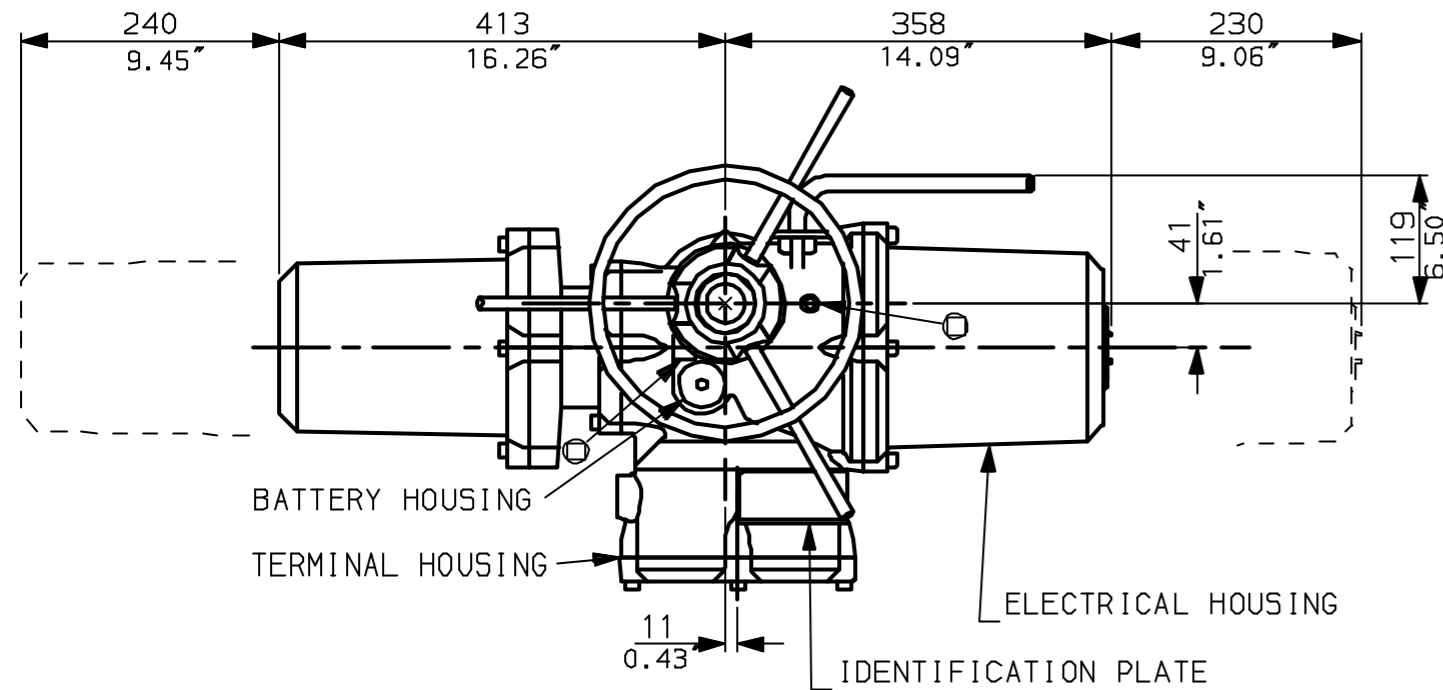
NOTE:  
Gearbox is shown with LOW Ratio Input Reducer.  
(ie Ratios 140,210,280)  
See Data Sheet with IW6Rh for HIGH ratio option.

**rotork**  
www.rotork.com

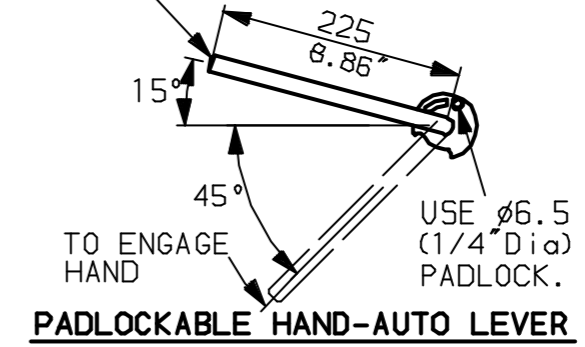
Rotork Controls Ltd.  
Bath England, BA1 3JQ.  
(Phone 01225-733200)  
Rotork Controls Inc.  
Rochester, NY 14624  
(Phone 585-328-1550)

|  |             |                |
|--|-------------|----------------|
| Title IQD10, 12, 18, LTHW, IW6(+63)RL, |             |                |
| STANDARD DIMENSIONAL DATA              |             |                |
| Drawn CAD                              | Checked PRE | Ref Data Sheet |
| Date April 04                          | Job No      | IQD1LTHW_IW6RL |

|                |                            |
|----------------|----------------------------|
| 01             | First Issue.               |
| Scale          | 1:7 THIRD ANGLE PROJECTION |
| Drawing Number | IQD1LTHW_IW6RL             |

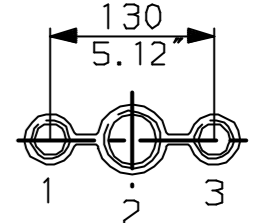


LEVER POSITION IN AUTO.  
LEVER AUTOMATICALLY RETURNS  
TO THIS POSITION WHEN RELEASED

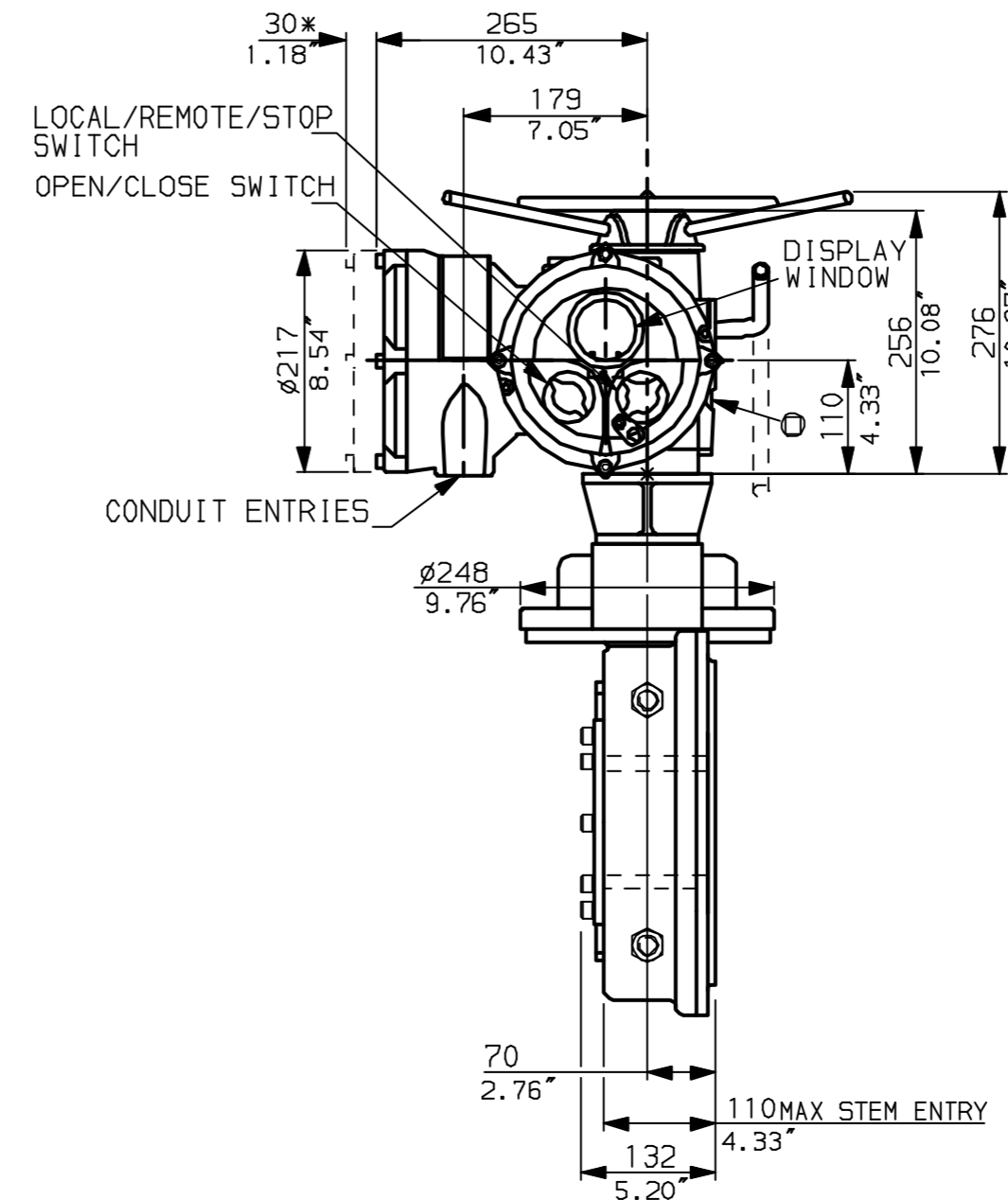
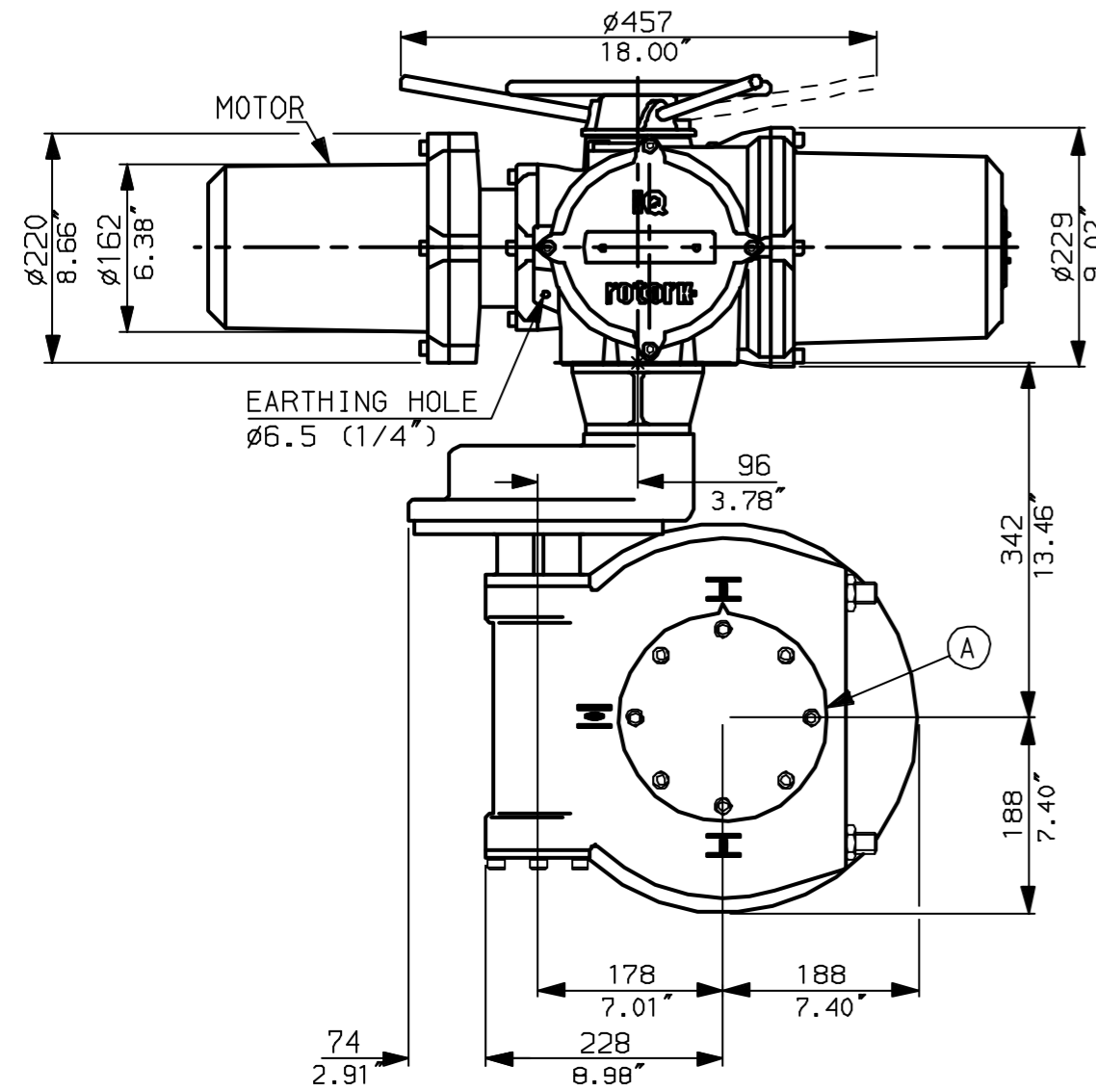


NOTES:  
DIMENSIONS WITH '\*' INDICATE  
COVER REMOVAL ALLOWANCE  
NETT WEIGHT = 127kg (279lbs)  
OIL FILLER/DRAIN PLUG  
THE INTERFACE PROVIDED FOR MOUNTING THE  
ACTUATOR OR SECOND STAGE GEARBOX ONTO THE  
VALVE SHOULD CONFORM TO GOOD ENGINEERING  
PRACTICES, ENSURING ADEQUATELY TOLERANCED  
LIMITS FOR PARALLELISM, PERPENDICULARITY  
AND CONCENTRICITY.

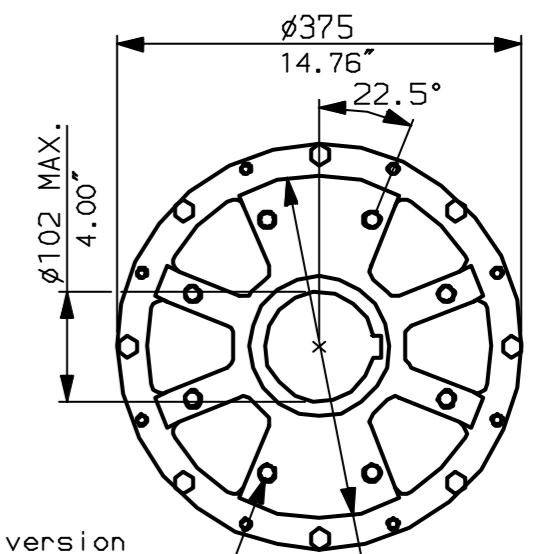
**CONDUIT ENTRIES** (N.T.S)



Nos.1 & 3 TAPPED 1" NPT  
No.2 TAPPED 1 1/2" NPT  
STD ALTERNATIVES IF SPECIFIED  
2 X M25, 1 X M40  
2 X PG16, 1 X PG29



N.B. KEYWAY POS. CAN BE MOVED  
90 OR 180° BY REMOVING 8 SCREWS  
MARKED (A) AND ROTATING OUTPUT  
SLEEVE.



"F" version  
8 HOLES TAPPED M16 x 16  $\phi 318$   
EQUI-SPACED AS SHOWN ON A 2.52"  
254 PCD (ISO 5211-F25).

"FA" version  
8 HOLES TAPPED 5/8" UNC x 0.63" dp  
EQUI-SPACED AS SHOWN ON A  
10" PCD (MSS SP101-FA25).

NOTE:  
Gearbox is shown with HIGH Ratio Input Reducer.  
(ie Ratios 350, 420)  
See Data Sheet with IW6RL for LOW ratio option.

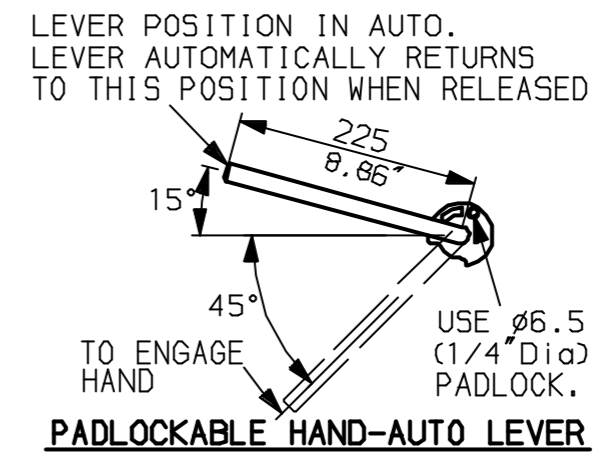
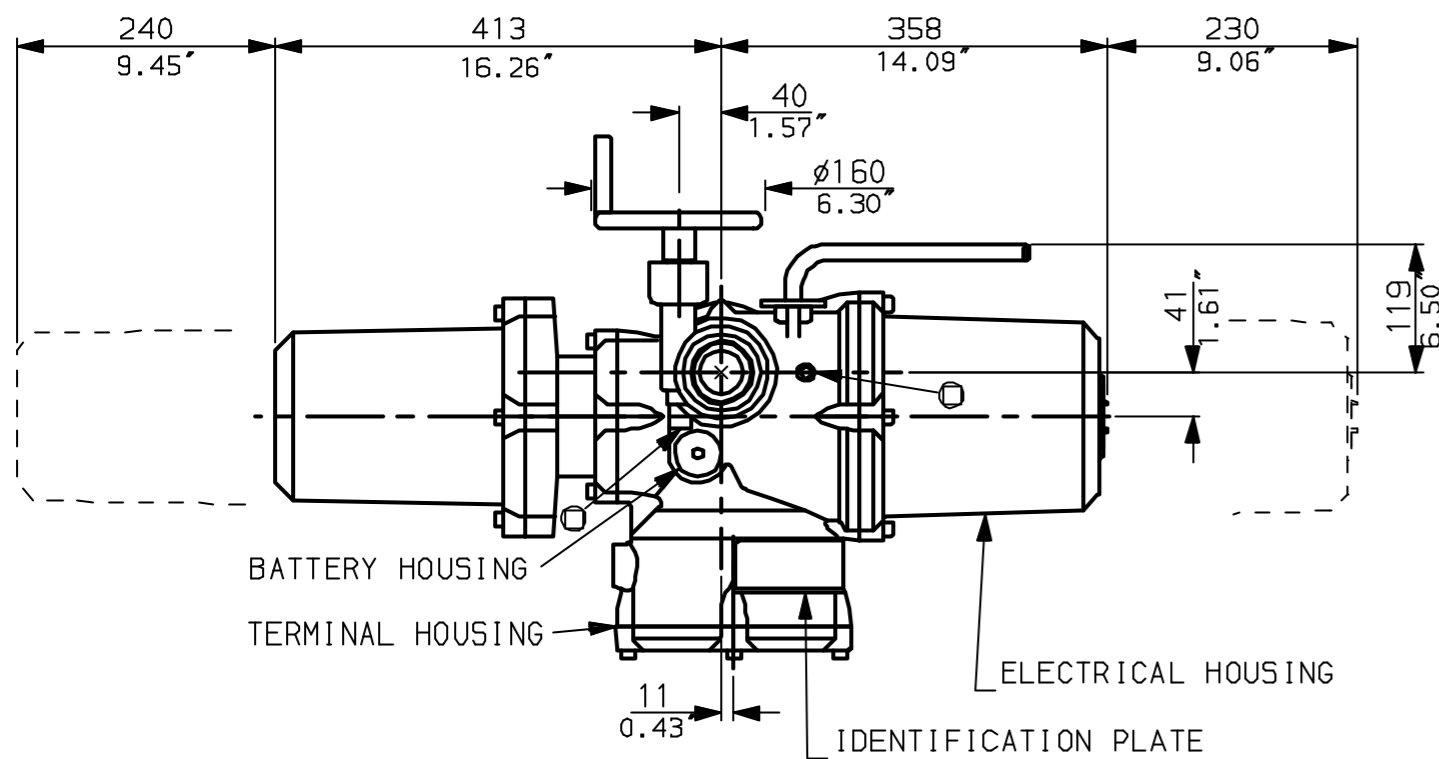
**rotork**  
www.rotork.com

Rotork Controls Ltd.  
Bath England, BA1 3JQ.  
(Phone 01225-733200)

Rotork Controls Inc.  
Rochester, NY 14624  
(Phone 585-328-1550)

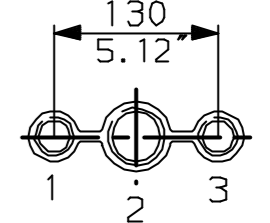
|  |             |                |
|--|-------------|----------------|
| Title IQD10, 12, 18, LTHW, IW6 (+63) Rh, |             |                |
| STANDARD DIMENSIONAL DATA                |             |                |
| Drawn CAD                                | Checked PRE | Ref Data Sheet |
| Date April 04                            | Job No      | IQD1LTHW_IW6Rh |

|                |                            |
|----------------|----------------------------|
| 01             | First Issue.               |
| Scale          | 1:7 THIRD ANGLE PROJECTION |
| Drawing Number | IQD1LTHW_IW6Rh             |

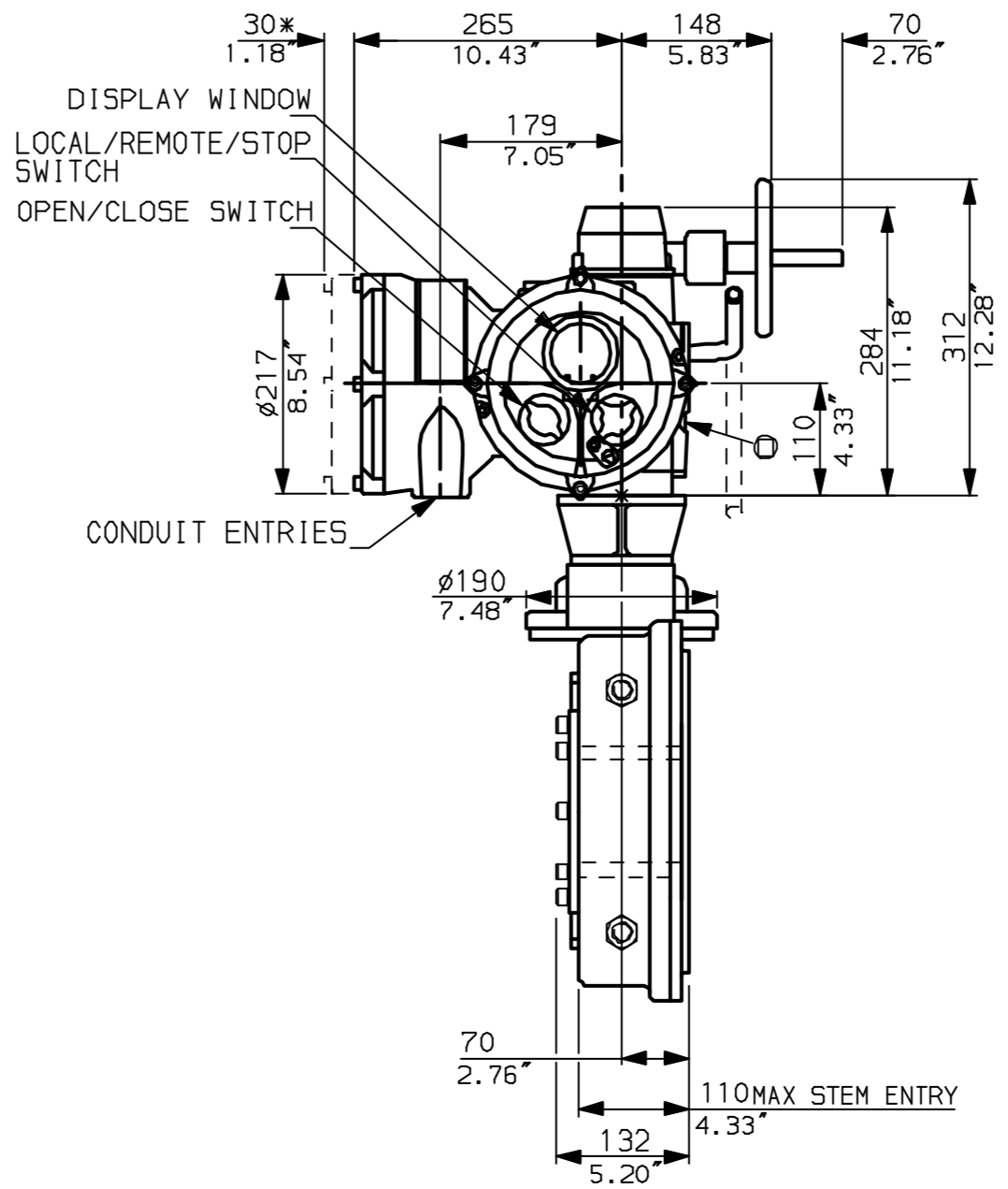
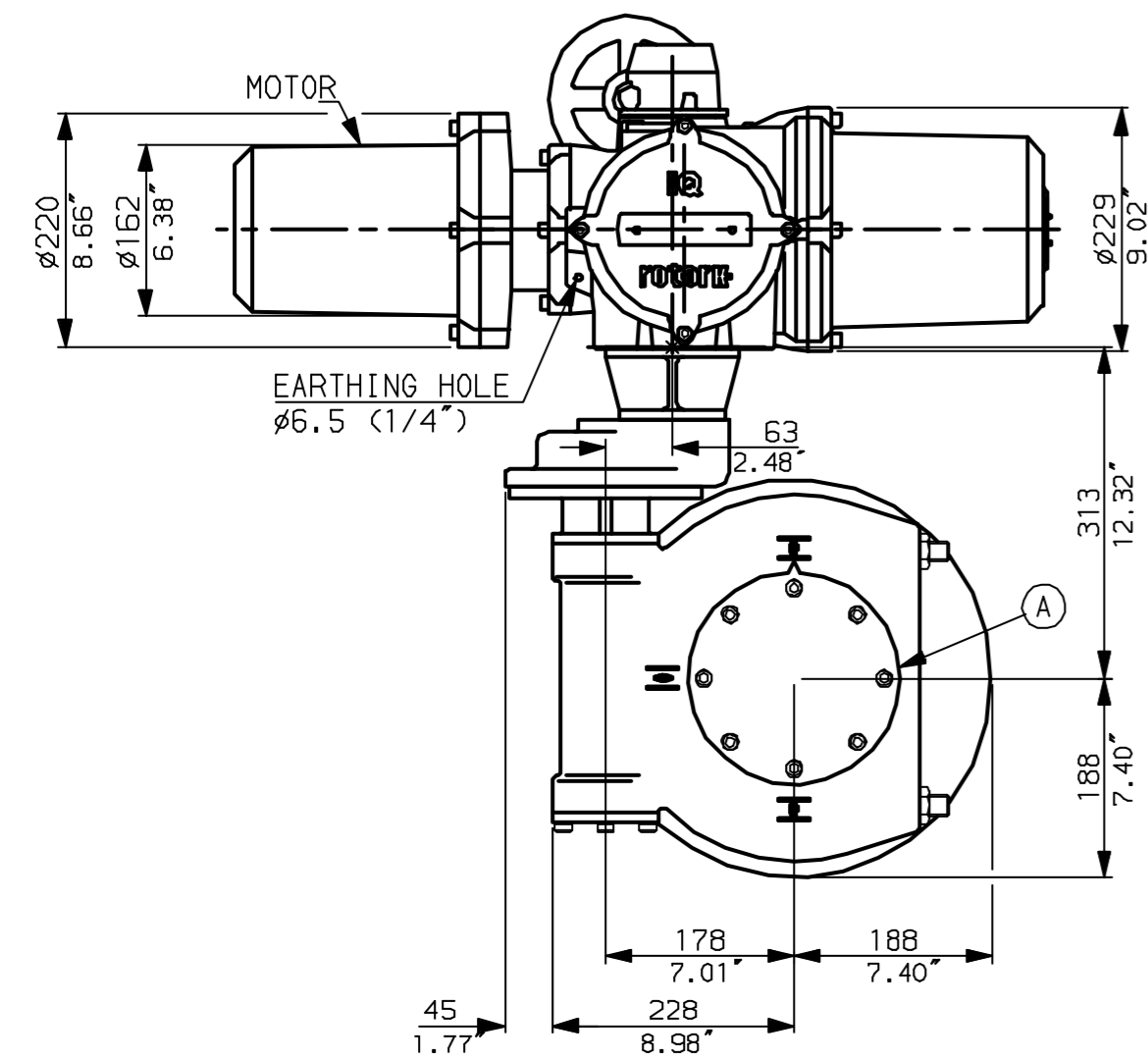


NOTES:  
 \* DIMENSIONS WITH '\*' INDICATE COVER REMOVAL ALLOWANCE  
 : NETT WEIGHT = 122kg (268lbs)  
 : = OIL FILLER/DRAIN PLUG  
 : THE INTERFACE PROVIDED FOR MOUNTING THE ACTUATOR OR SECOND STAGE GEARBOX ONTO THE VALVE SHOULD CONFORM TO GOOD ENGINEERING PRACTICES, ENSURING ADEQUATELY TOLERANCED LIMITS FOR PARALLELISM, PERPENDICULARITY AND CONCENTRICITY.

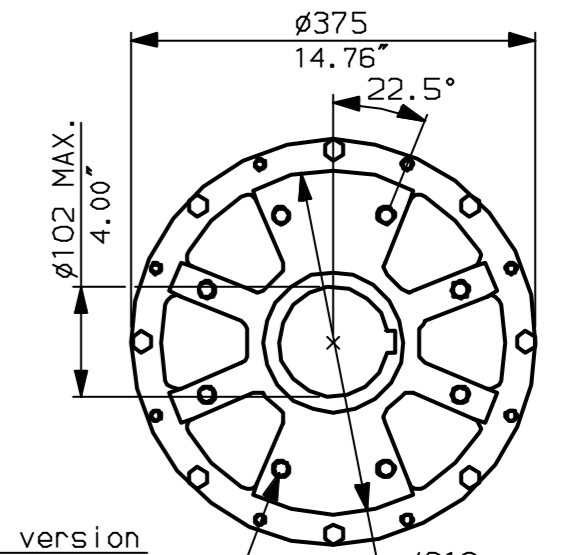
**CONDUIT ENTRIES** (N.T.S)



Nos.1 & 3 TAPPED 1" NPT  
 No.2 TAPPED 1 1/2" NPT  
 STD ALTERNATIVES IF SPECIFIED  
 2 X M25, 1 X M40  
 2 X PG16, 1 X PG29



N.B. KEYWAY POS. CAN BE MOVED 90 OR 180° BY REMOVING 8 SCREWS MARKED (A) AND ROTATING OUTPUT SLEEVE.



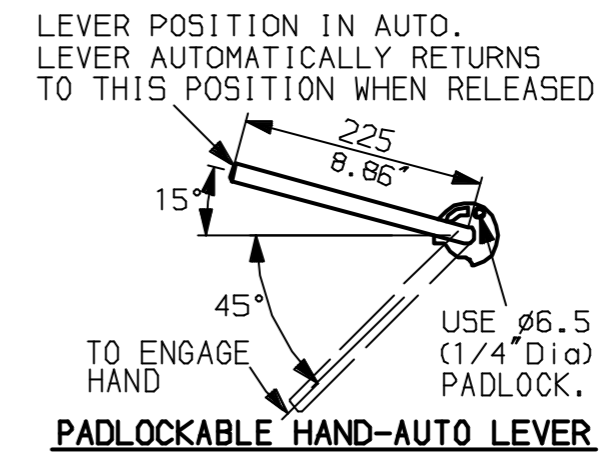
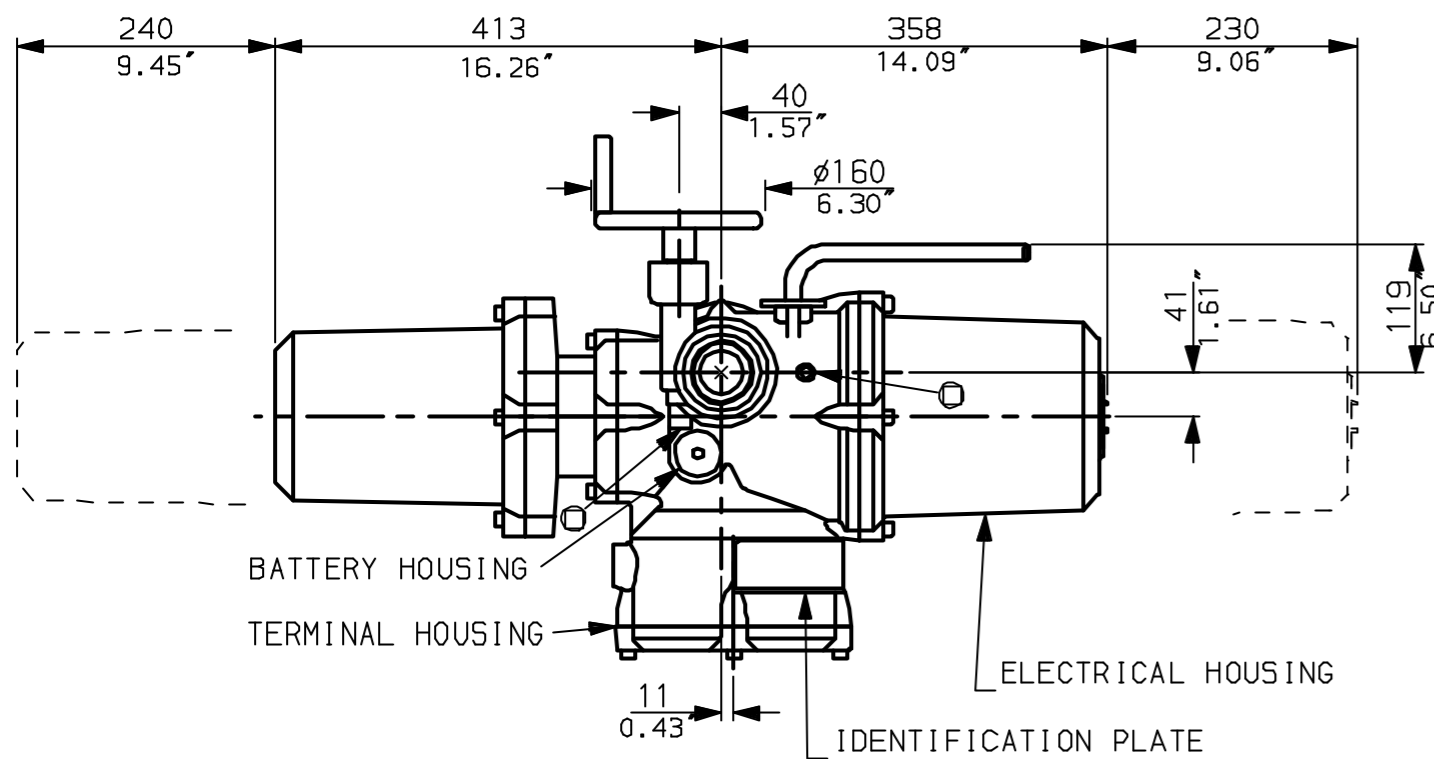
"F" version  
 8 HOLES TAPPED M6 x 16 DP Ø318 EQUI-SPACED AS SHOWN ON A 2.52" 254 PCD (ISO 5211-F25).  
 "FA" version  
 8 HOLES TAPPED 5/8" UNC x 0.63" dp EQUI-SPACED AS SHOWN ON A 10" PCD (MSS SP101-FA25).

NOTE:  
 Gearbox is shown with LOW Ratio Input Reducer.  
 (ie Ratios 140,210,280)  
 See Data Sheet with IW6Rh for HIGH ratio option.

**rotork**  
 www.rotork.com  
 Rotork Controls Ltd.  
 Bath England, BA1 3JQ.  
 (Phone 01225-733200)  
 Rotork Controls Inc.  
 Rochester, NY 14624  
 (Phone 585-328-1550)

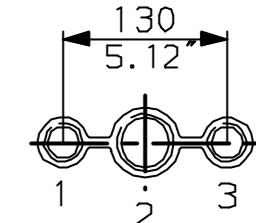
|   |             |                |
|---|-------------|----------------|
| Title IQD10, 12, 18, SHW, IW6 (+63) RL, |             |                |
| STANDARD DIMENSIONAL DATA               |             |                |
| Drawn CAD                               | Checked PRE | Ref Data Sheet |
| Date April 04                           | Job No      | IQD1SHW_IW6R   |

|                |                            |
|----------------|----------------------------|
| 01             | First Issue.               |
| Scale          | 1:7 THIRD ANGLE PROJECTION |
| Drawing Number | IQD1SHW_IW6RL              |

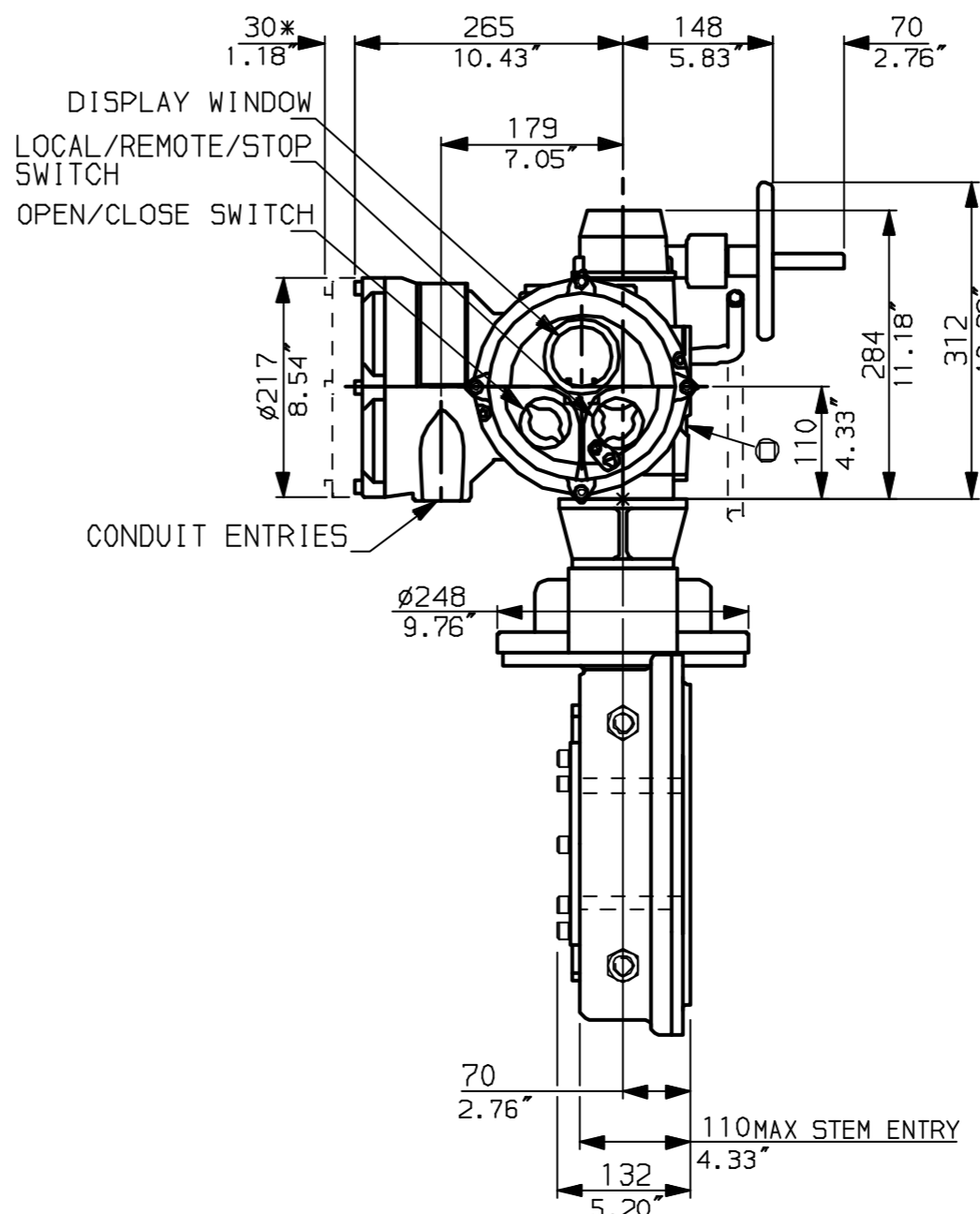
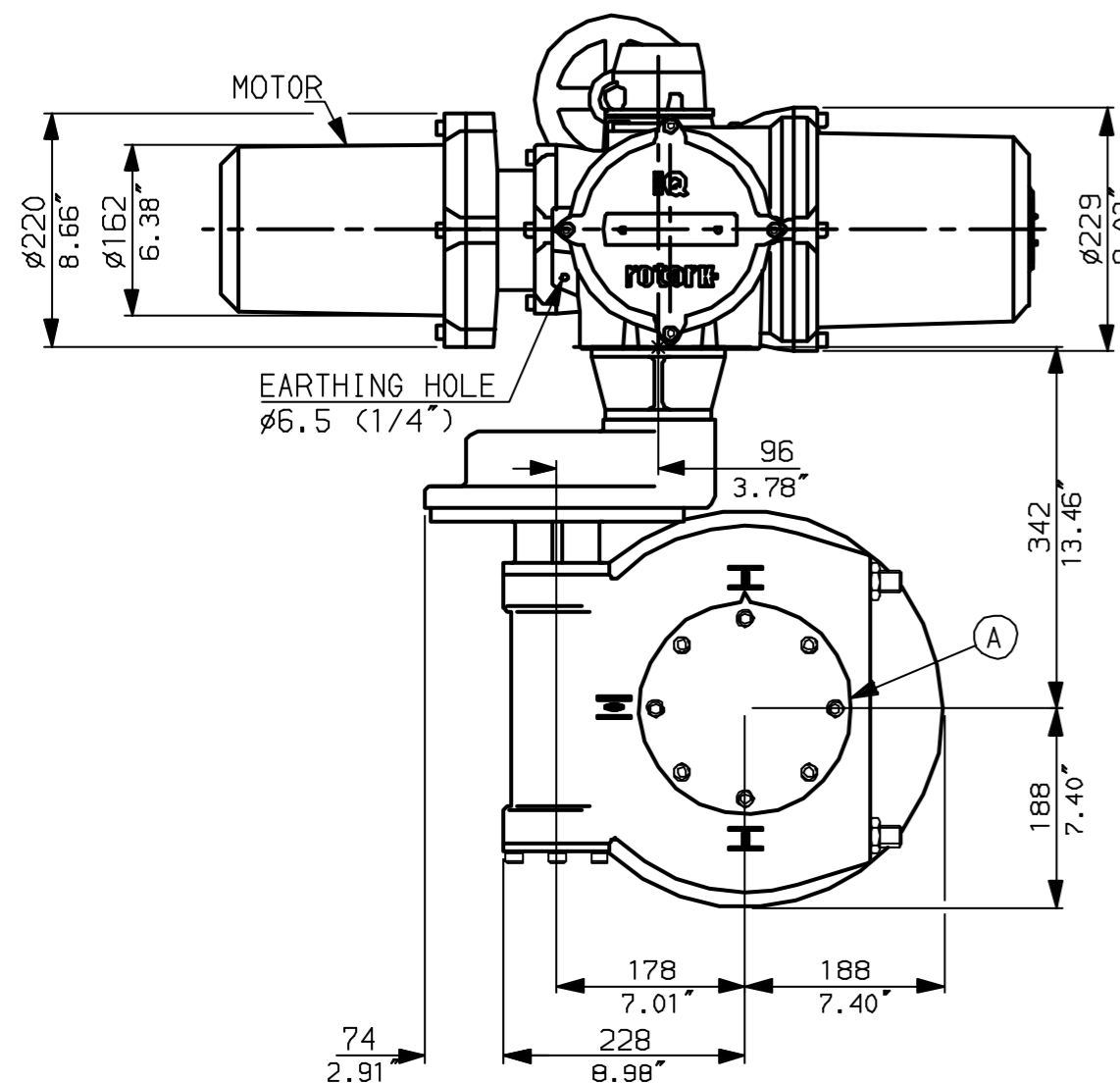


NOTES:  
 \* DIMENSIONS WITH '\*' INDICATE COVER REMOVAL ALLOWANCE  
 NETT WEIGHT = 127kg (279lbs)  
 ○ = OIL FILLER/DRAIN PLUG  
 THE INTERFACE PROVIDED FOR MOUNTING THE ACTUATOR OR SECOND STAGE GEARBOX ONTO THE VALVE SHOULD CONFORM TO GOOD ENGINEERING PRACTICES, ENSURING ADEQUATELY TOLERANCED LIMITS FOR PARALLELISM, PERPENDICULARITY AND CONCENTRICITY.

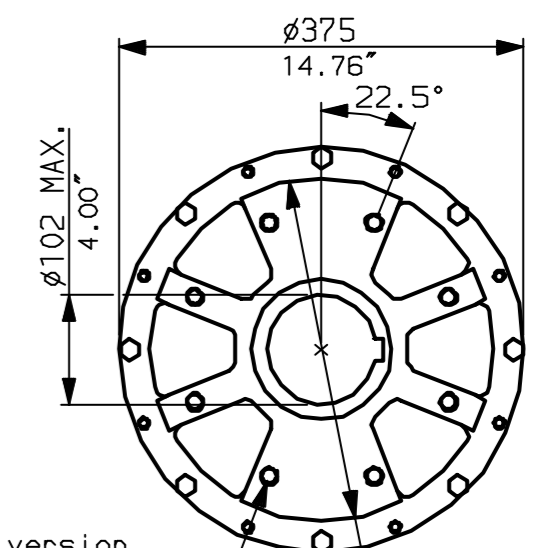
**CONDUIT ENTRIES** (N.T.S)



Nos.1 & 3 TAPPED 1" NPT  
 No.2 TAPPED 1 1/2" NPT  
 STD ALTERNATIVES IF SPECIFIED  
 2 X M25, 1 X M40  
 2 X PG16, 1 X PG29



N.B. KEYWAY POS. CAN BE MOVED 90 OR 180° BY REMOVING 8 SCREWS MARKED (A) AND ROTATING OUTPUT SLEEVE.



"F" version  
 8 HOLES TAPPED M16 x 16 DP Ø318 EQUI-SPACED AS SHOWN ON A 254 PCD (ISO 5211-F25).  
 "FA" version  
 8 HOLES TAPPED 5/8" UNC x 0.63" dp EQUI-SPACED AS SHOWN ON A 10" PCD (MSS SP101-FA25).

NOTE:  
 Gearbox is shown with HIGH Ratio Input Reducer. (ie Ratios 350, 420)  
 See Data Sheet with IW6RL for LOW ratio option.

**rotork**  
 www.rotork.com

Rotork Controls Ltd.  
 Bath England, BA1 3JQ.  
 (Phone 01225-733200)  
 Rotork Controls Inc.  
 Rochester, NY 14624  
 (Phone 585-328-1550)

|   |             |                |
|---|-------------|----------------|
| Title IQD10, 12, 18, SHW, IW6 (+63) Rh, |             |                |
| STANDARD DIMENSIONAL DATA               |             |                |
| Drawn CAD                               | Checked PRE | Ref Data Sheet |
| Date April 04                           | Job No      | IQD1SHW_IW6Rh  |

|                |                            |
|----------------|----------------------------|
| 01             | First Issue.               |
| Scale          | 1:7 THIRD ANGLE PROJECTION |
| Drawing Number | IQD1SHW_IW6Rh              |