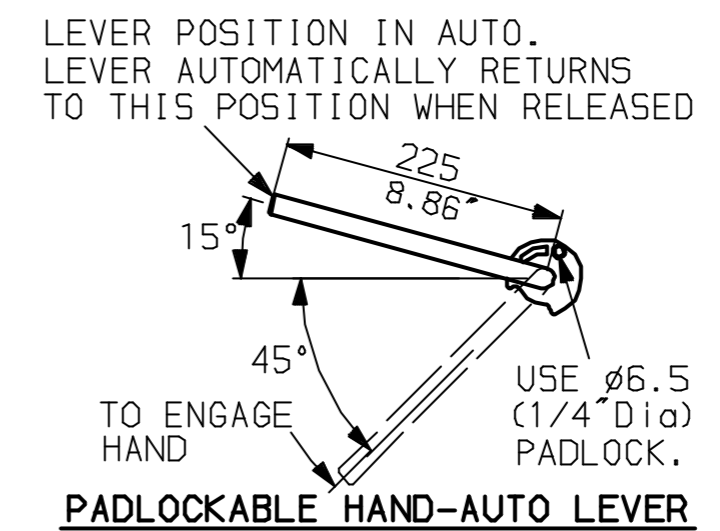
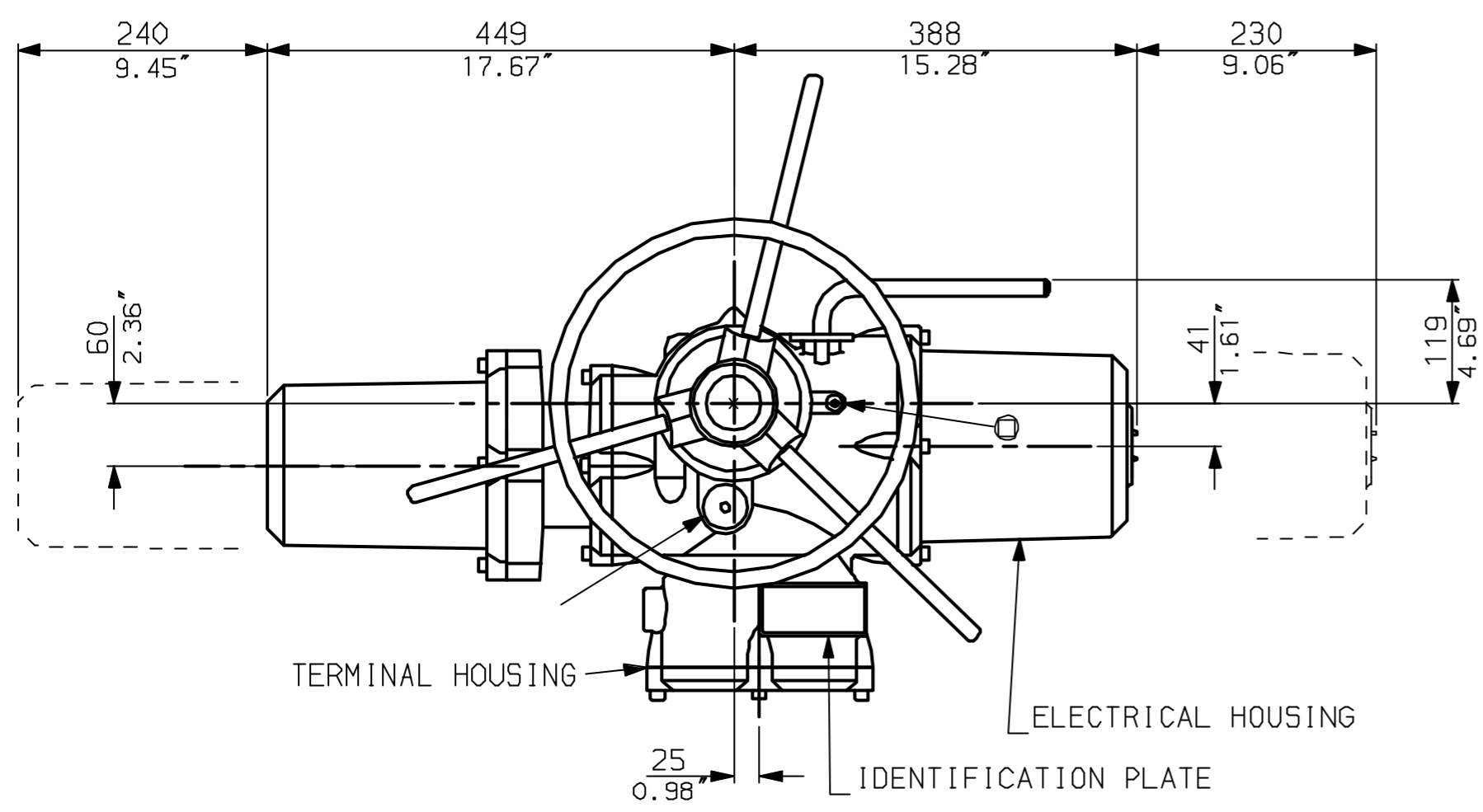
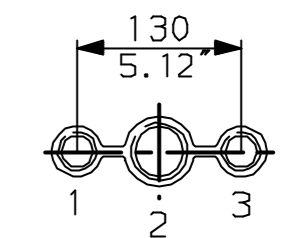


G
F
E
D
C
B
A

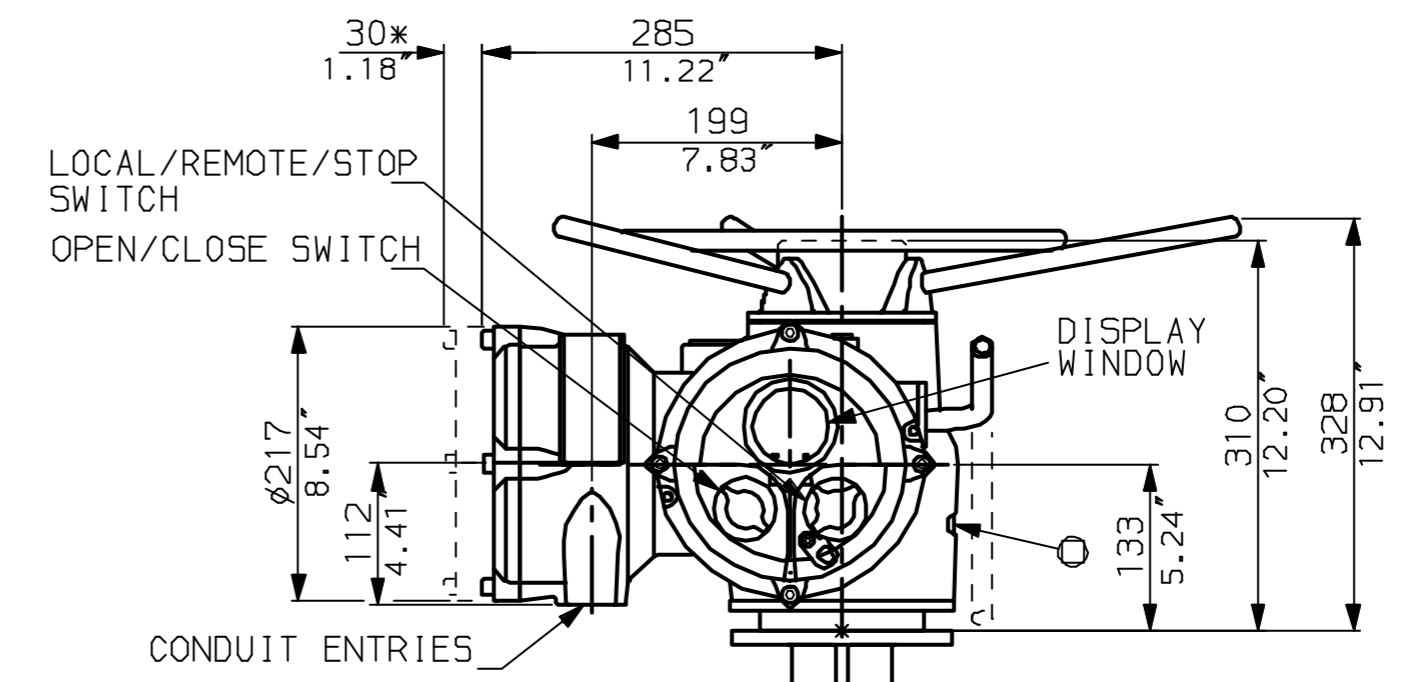
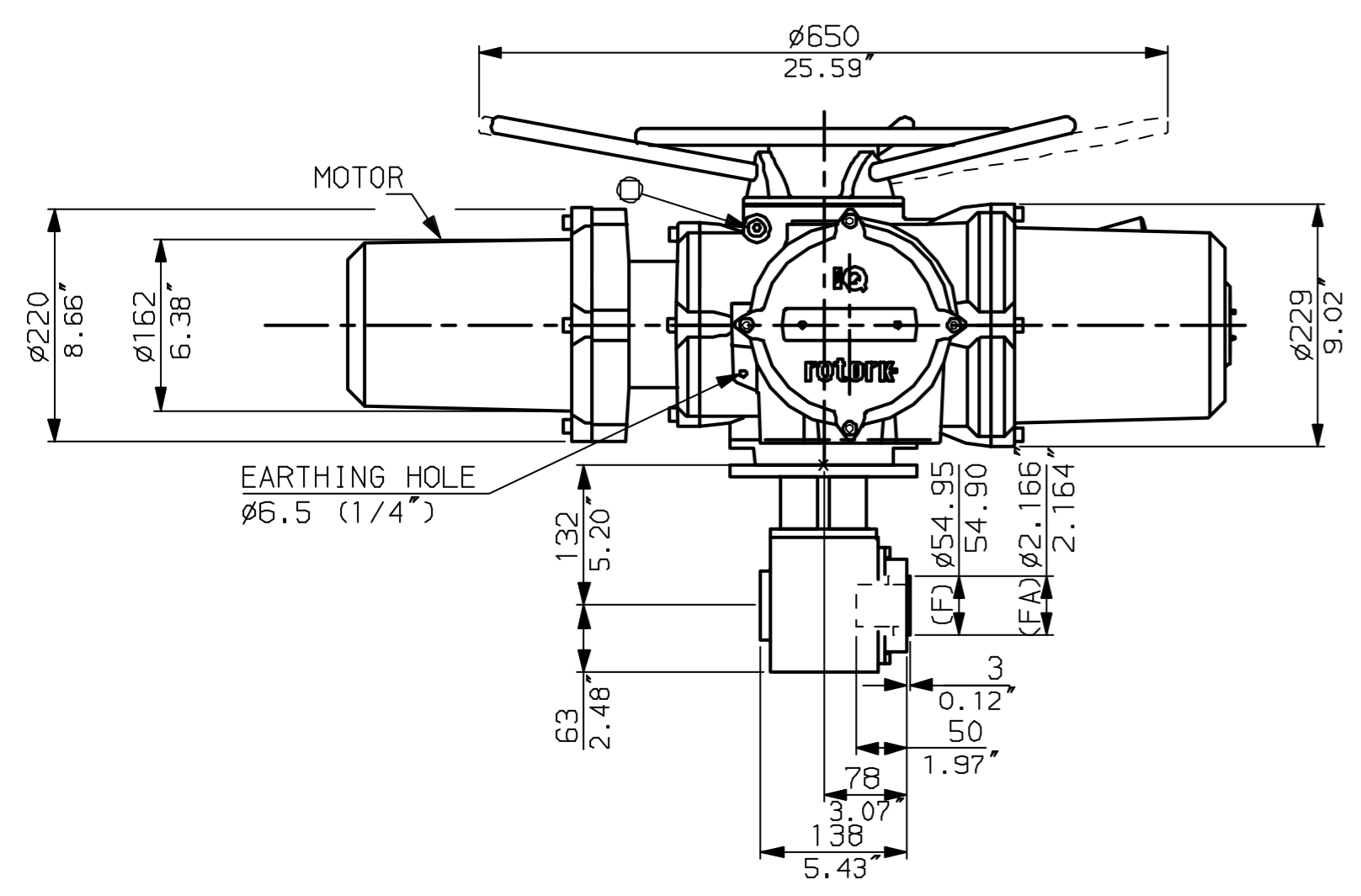


NOTES:
DIMENSIONS WITH '*' INDICATE COVER REMOVAL ALLOWANCE
NETT WEIGHT = 63kg (139lbs)
= OIL FILLER/DRAIN PLUG
THE INTERFACE PROVIDED FOR MOUNTING THE ACTUATOR OR SECOND STAGE GEARBOX ONTO THE VALVE SHOULD CONFORM TO GOOD ENGINEERING PRACTICES, ENSURING ADEQUATELY TOLERANCED LIMITS FOR PARALLELISM, PERPENDICULARITY AND CONCENTRICITY.

CONDUIT ENTRIES (N.T.S)



Nos.1 & 3 TAPPED 1" NPT
No.2 TAPPED 1 1/2" NPT
STD ALTERNATIVES IF SPECIFIED
2 X M25, 1 X M40
2 X PG16, 1 X PG29



"F" version
4 HOLES TAPPED M8x12 DP
EQUI-SPACED ON A 70 PCD
(IS05210 F07).

"FA" version
4 HOLES TAPPED 5/16" UNC
x0.5" dp EQUI-SPACED ON A
2.75" PCD (MSS SP102-FA07)

45° $\phi 28$ MAX 1.10" $\phi 110$ 4.33"



Rotork Controls Ltd.
Bath England, BA1 3JQ.
(Phone 01225-733200)

Rotork Controls Inc.
Rochester, NY 14624
(Phone 585-328-1550)

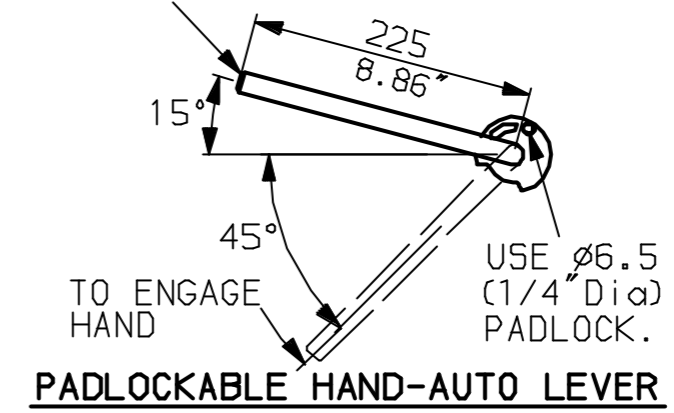
Title IQD20, THW, IB1,		
STANDARD DIMENSIONAL DATA		
Drawn CAD	Checked PRE	Ref Data Sheet
Date April 04	Job No IQD20THW_IB1	

01	First Issue.
Scale 1:6	THIRD ANGLE PROJECTION
Drawing Number	IQD20THW_IB1

1 | 2 | 3 | 4 | 5 | 6 | 7 | 8 | 9 | 10

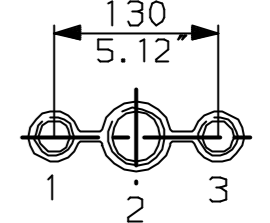
G
F
E
D
C
B
A

LEVER POSITION IN AUTO.
LEVER AUTOMATICALLY RETURNS
TO THIS POSITION WHEN RELEASED

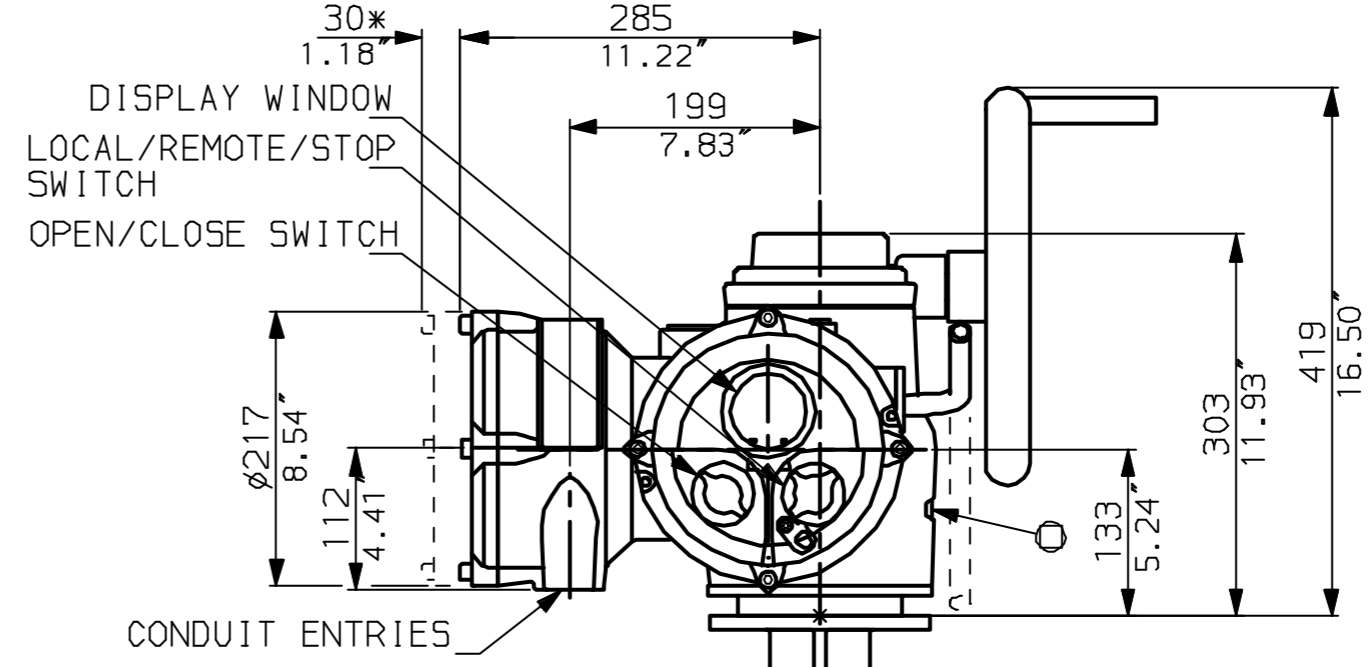
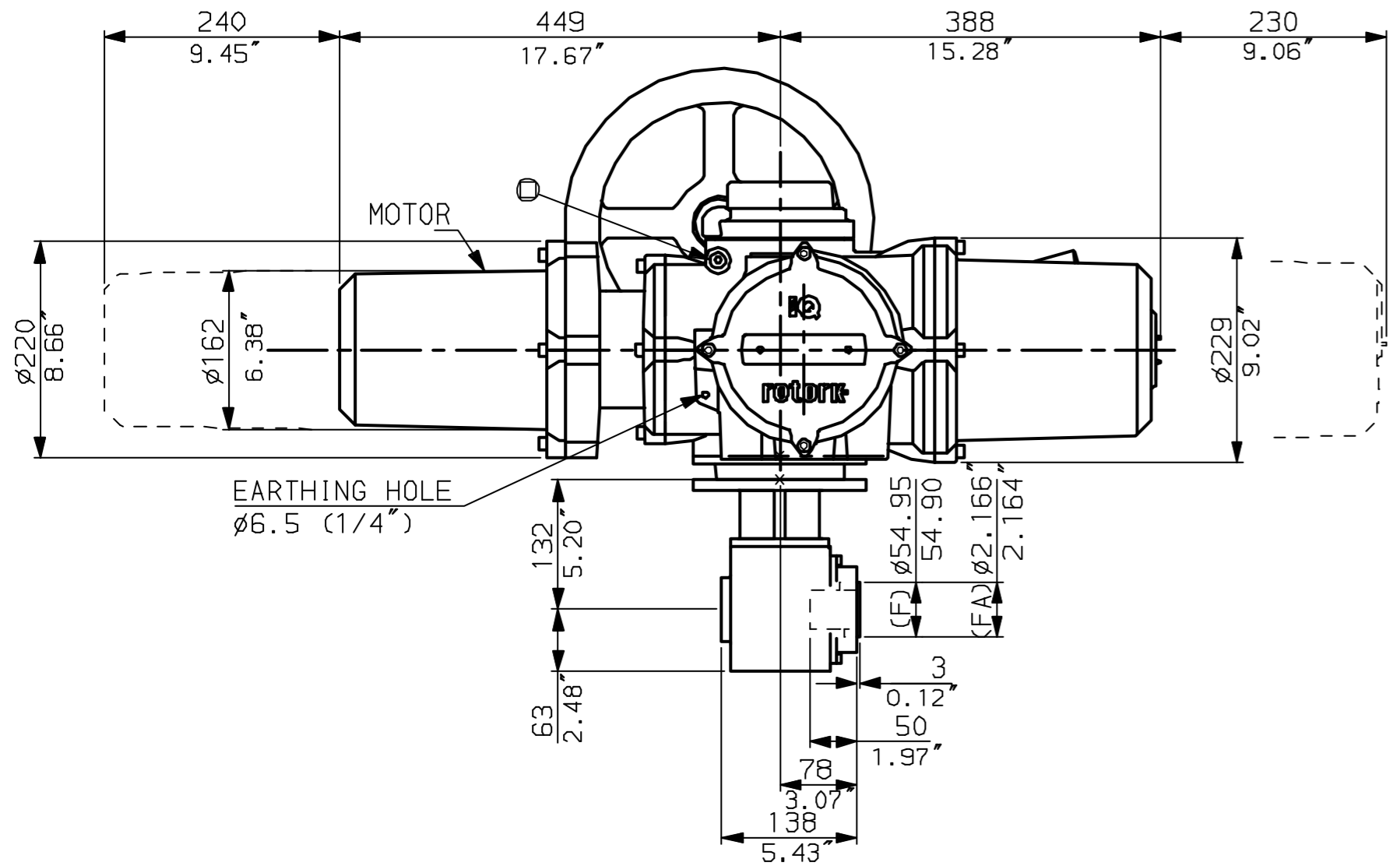
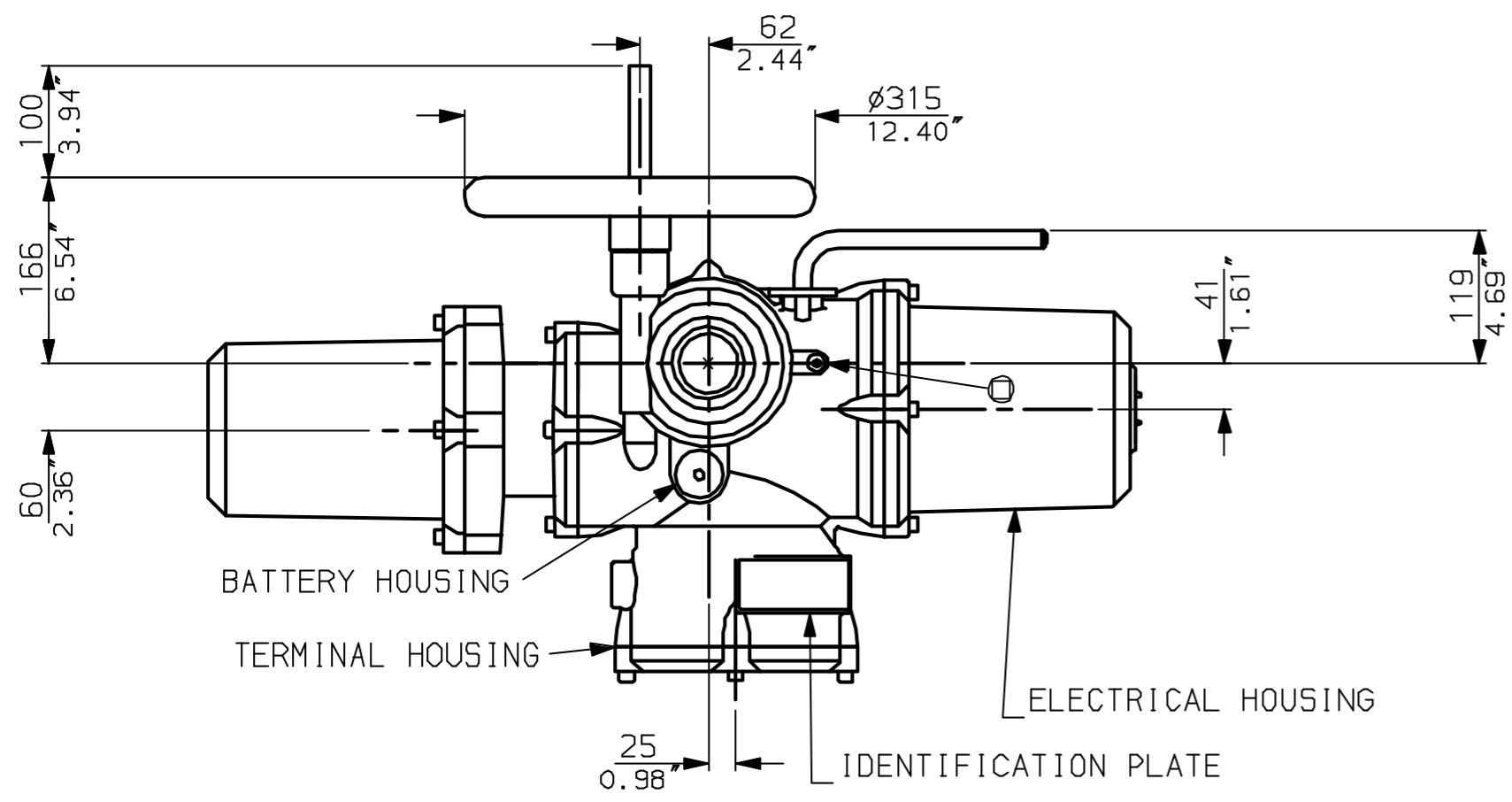


NOTES:
DIMENSIONS WITH '*' INDICATE
COVER REMOVAL ALLOWANCE
NETT WEIGHT = 63kg (139lbs)
OIL FILLER/DRAIN PLUG
THE INTERFACE PROVIDED FOR MOUNTING THE
ACTUATOR OR SECOND STAGE GEARBOX ONTO THE
VALVE SHOULD CONFORM TO GOOD ENGINEERING
PRACTICES, ENSURING ADEQUATELY TOLERANCED
LIMITS FOR PARALLELISM, PERPENDICULARITY
AND CONCENTRICITY.

CONDUIT ENTRIES (N.T.S)



Nos.1 & 3 TAPPED 1" NPT
No.2 TAPPED 1 1/2" NPT
STD ALTERNATIVES IF SPECIFIED
2 X M25, 1 X M40
2 X PG16, 1 X PG29



"F" version
4 HOLES TAPPED M8x12 DP
EQUI-SPACED ON A 70 PCD
(IS05210 F07).

"FA" version
4 HOLES TAPPED 5/16"UNC
x0.5"dp EQUI-SPACED ON A
2.75"PCD (MSS SP102-FA07)



Rotork Controls Ltd.
Bath England, BA1 3JQ.
(Phone 01225-733200)
Rotork Controls Inc.
Rochester, NY 14624
(Phone 585-328-1550)

Title IQD20, SHW, IB1,		
STANDARD DIMENSIONAL DATA		
Drawn CAD	Checked PRE	Ref Data Sheet
Date April 04	Job No IQD20SHW_IB1	

01	First Issue.
Scale	1:6 THIRD ANGLE PROJECTION
Drawing Number	IQD20SHW_IB1

1 | 2 | 3 | 4 | 5 | 6 | 7 | 8 | 9 | 10