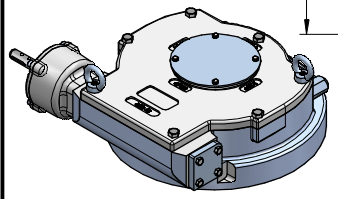
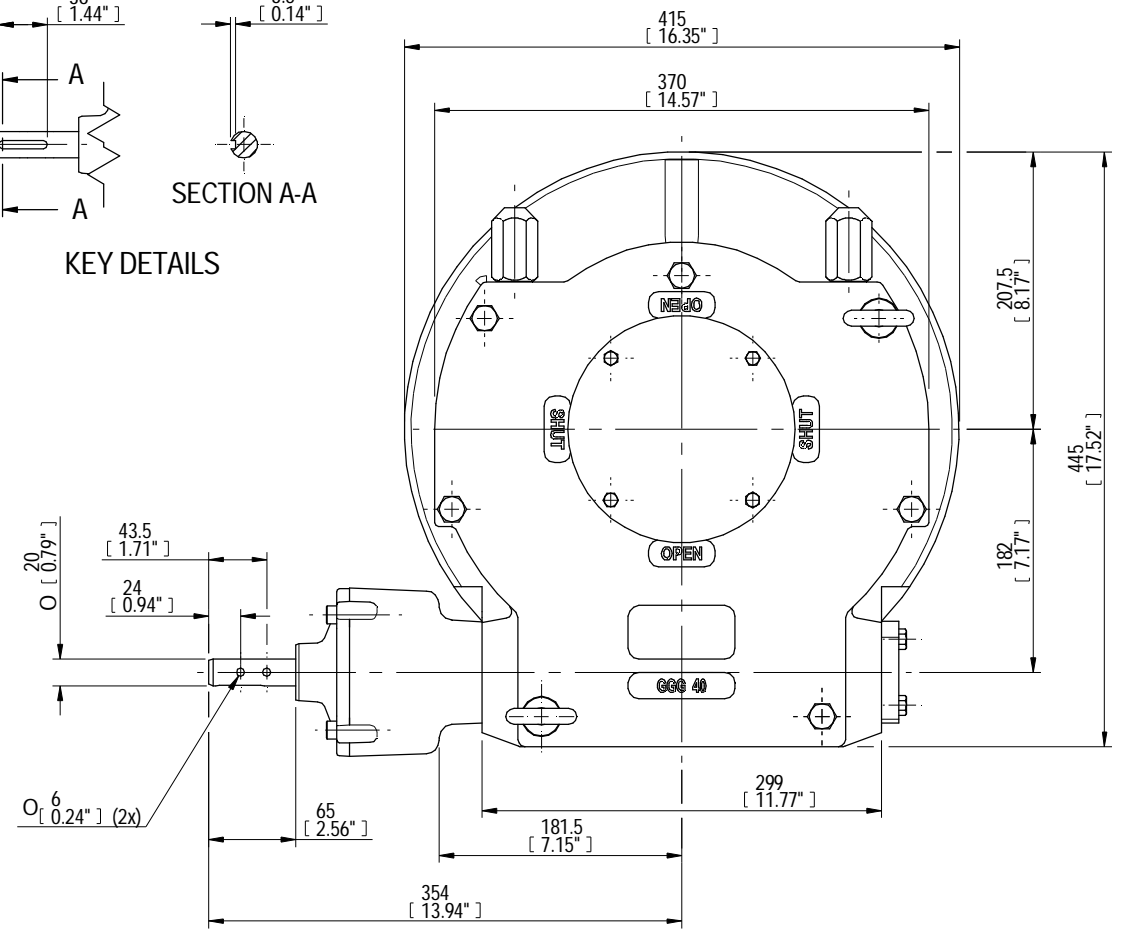
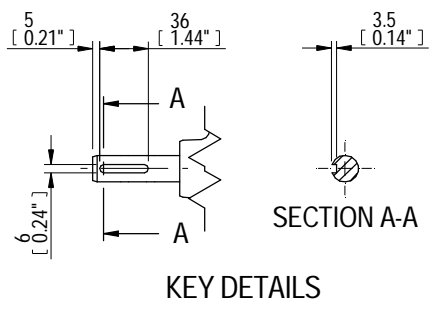
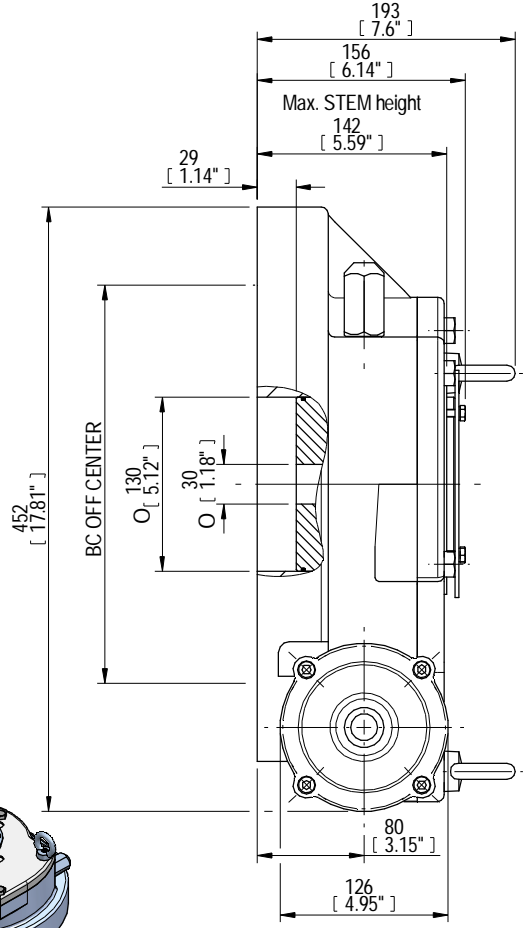
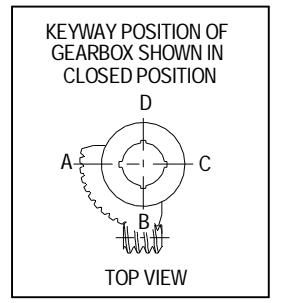


| DESCRIPTION |               |                   |         | MOUNTING HOLES - BOLT CIRCLE (OFF CENTRES) |                         |                         |                                    | BORE; STEM ACCEPTANCE WITH KEYWAY IN ACCORDING WITH STANDARD |            |            | TORQUE        |             |           |
|-------------|---------------|-------------------|---------|--|-------------------------|-------------------------|------------------------------------|--|------------|------------|---------------|-------------|-----------|
| RATIO       | URNS TO CLOSE | TRAVEL (1/4 TURN) | WEIGHT  | NR of HOLES                                | MIN ENVELOP PCD - ØHOLE | MAX ENVELOP PCD + ØHOLE | ACCORDING TO ISO 5211 / MSS SP-101 | MIN  | MAX        | STANDARD   | OUTPUT        | INPUT       | MA        |
| 468:1       | 117.0         | -5° TO 95°        | 94.2 kg | 4  | Ø134 mm                 | Ø405 mm                 | F16                                | Ø30 mm   | Ø100 mm    | DIN 6885-1 | 17000 Nm      | 121 Nm      | 140 ± 15% |
|             |               |                   |         | 8  | Ø134 mm                 | Ø405 mm                 | F25 - F30 - F35                    |  |            |            |               |             |           |
|             |               |                   | 208 lbs | 4  | Ø5.28 inch              | Ø15.94 inch             | FA16                               | Ø1.18 inch   | Ø3.94 inch | ANSI B17.1 | 150620 lbf.in | 1075 lbf.in |           |
|             |               |                   |         | 8  | Ø5.28 inch              | Ø15.94 inch             | FA25 - FA30 - FA35                 |  |            |            |               |             |           |



ISOMETRIC VIEW  
1:10

AS PART OF CONTINUOUS PRODUCT DEVELOPMENT, ALL DETAILS SUBJECT TO CHANGE WITHOUT PRIOR NOTICE. FOR UP TO DATE DETAILS PLEASE VISIT [www.rotork.com](http://www.rotork.com)

|  |  |          |                                      |   |
|--|--|----------|--------------------------------------|---|
| <br>LOSSER - THE NETHERLANDS<br><a href="http://www.rotork.com">www.rotork.com</a> | This drawing is confidential and is the property of Rotork Gears and must not be reproduced either wholly or partly. All rights in respect of patents, designs and copyrights are reserved. © 2013 |          | Document type <b>DETAIL DRAWING</b>  | Title<br><b>AB6800G WITH A PR6 LB BU RH PLANETARY GEARBOX-PR6</b> |
|  | Dimensions in mm<br>Scale 1:4  |          | Created <b>NTS</b> <b>11/11/2013</b> | Drawing Number<br><b>AB6800G-PR6 LB BU RH</b>                     |
|  | Checked <b>PRABU D</b> <b>15/11/2013</b>   | Approved | Rev <b>A</b>                         | Sheet <b>1</b> of <b>1</b> Size <b>A3</b>                         |

| Rev | CN | Revised | Approved | Date       | Change Description |
|-----|----|---------|----------|------------|--------------------|
| A   |    |         |          | 15/11/2013 | FIRST ISSUE        |