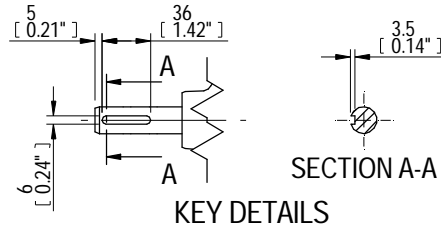
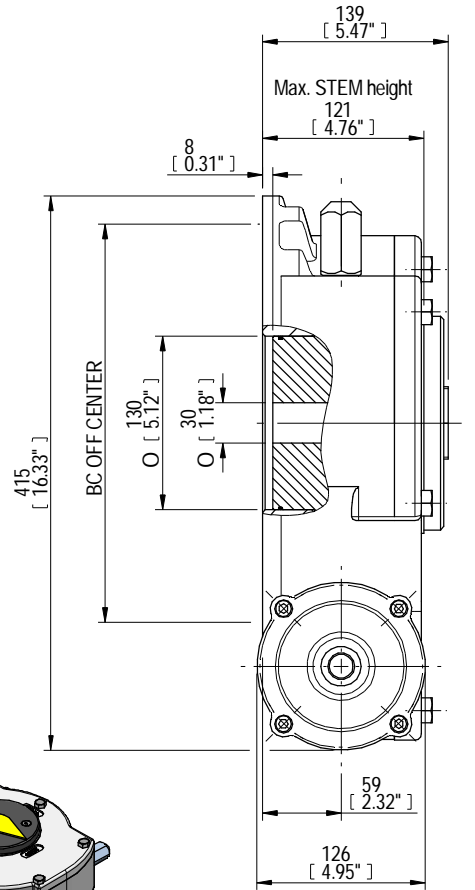
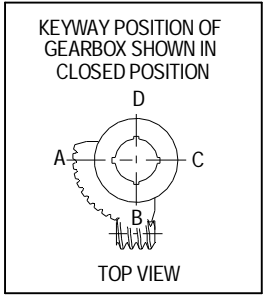


DESCRIPTION				MOUNTING HOLES - BOLT CIRCLE (OFF CENTRES)				BORE; STEM ACCEPTANCE WITH KEYWAY IN ACCORDING WITH STANDARD			TORQUE		
RATIO	TURNS TO CLOSE	TRAVEL (1/4 TURN)	WEIGHT	NR OF HOLES	MIN ENVELOP PCD - ØHOLE	MAX ENVELOP PCD + ØHOLE	ACCORDING TO ISO 5211 / MSS SP-101	MIN	MAX	STANDARD	OUTPUT	INPUT	MA
468:1	117.0	-5° TO 95°	64.2 kg	4	Ø134 mm	Ø335 mm	F16	Ø30 mm	Ø100 mm	DIN 6885-1	17000 Nm	121 Nm	140 ± 15%
			142 lbs	8	Ø134 mm	Ø335 mm	F25 - F30	Ø30 mm	Ø100 mm	DIN 6885-1	17000 Nm	121 Nm	
				4	Ø5.28 inch	Ø13.19 inch	FA16	Ø1.18 inch	Ø3.94 inch	ANSI B17.1	150620 lbf.in	1075 lbf.in	
				8	Ø5.28 inch	Ø13.19 inch	FA25 - FA30	Ø1.18 inch	Ø3.94 inch	ANSI B17.1	150620 lbf.in	1075 lbf.in	



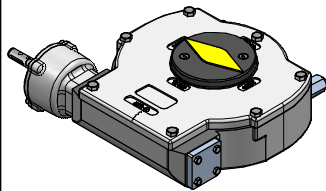
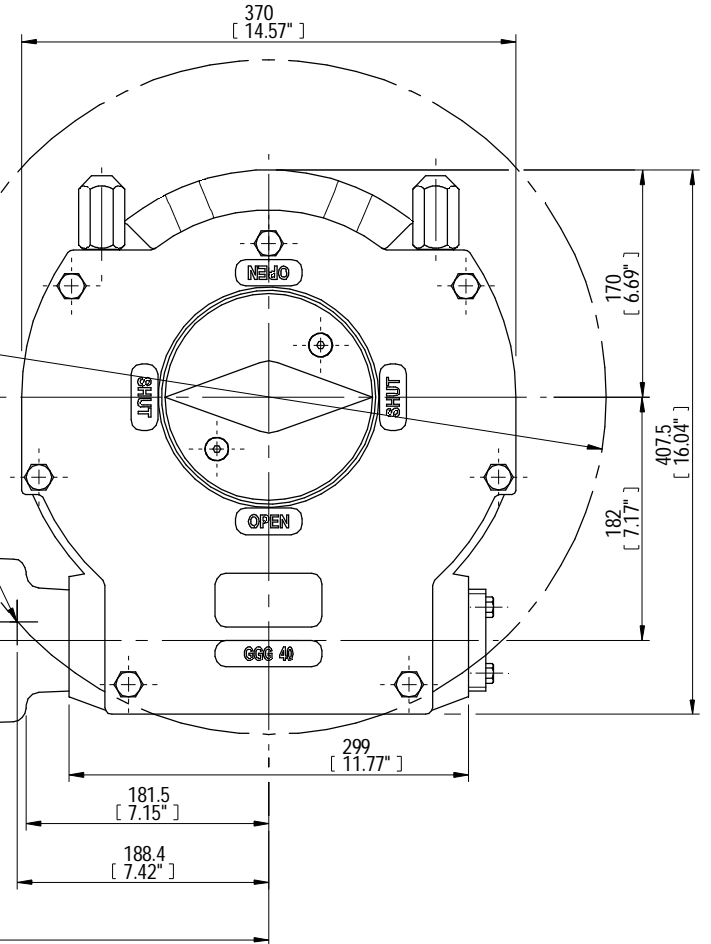
Ø 505 [19.88"]
MAX. VALVE DIAMETER BEFORE CLASH

POINT OF CONTACT

Ø 20 [0.79"]
168.2 [6.62"]
43.5 [1.71"]
24 [0.94"]

Ø 6 [0.24"] (2x)

65 [2.56"]
181.5 [7.15"]
188.4 [7.42"]
354 [13.94"]



ISOMETRIC VIEW
1:10

AS PART OF CONTINUOUS PRODUCT DEVELOPMENT, ALL DETAILS SUBJECT TO CHANGE WITHOUT PRIOR NOTICE. FOR UP TO DATE DETAILS PLEASE VISIT www.rotork.com

 LOSSER - THE NETHERLANDS www.rotork.com	Document type DETAIL DRAWING		Title AB6800G WITH A PR6 RH PLANETARY GEARBOX-PR6	
	Dimensions in mm Scale 1:4		Drawing Number AB6800G-PR6 RH	
Created	NTS	11/11/2013	Rev	A
Checked	PRABU D	15/11/2013	Sheet	1 of 1
Approved			Size	A3