

**DESCRIPTION:**

TRAVEL : -5° TO 95° adjustable  
 RATIO : 432 : 1  
 TURNS TO CLOSE : 108  
 WEIGHT : 118.8 kg. (262 lb.) Excl. handwheel

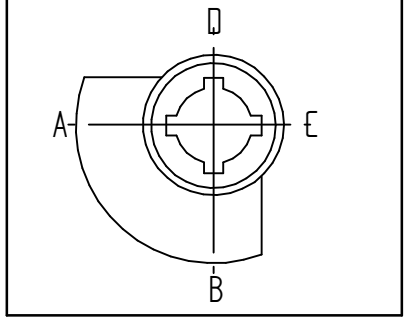
**MOUNTING HOLES :**

BOLT CIRCLE : min. Ø 254 [10.00]  
 (OFF CENTER) : max. Ø 356 [14.01]  
 acc. ISO 5211 : F25 - F30 - F35  
 Min. bore Quadrant : Ø 65 [2.56]  
 MAX. bore Quadrant :  $\sphericalangle$  115 [4.52] or Ø 160 [6.29]

**TORQUE :**

max. OUTPUT : 26000 Nm (230119 lbf.in.)  
 max. INPUT : 203 Nm (1797 lbf.in.)  
 MA : 127.9 ± 15%

**KEYWAY POSITION OF GEARBOX SHOWN IN CLOSED POSITION**



DIMENSIONS IN MM [INCH]

**ROTORK GEARS**

**GEARBOX A200N-PR6**

DRAWN:- Robbin Goosen CHECKED:- Henk Hoff  
 DWG:- A200N-PR6 REV: 00