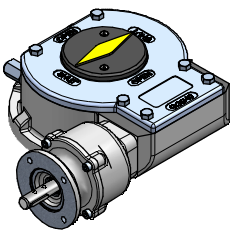
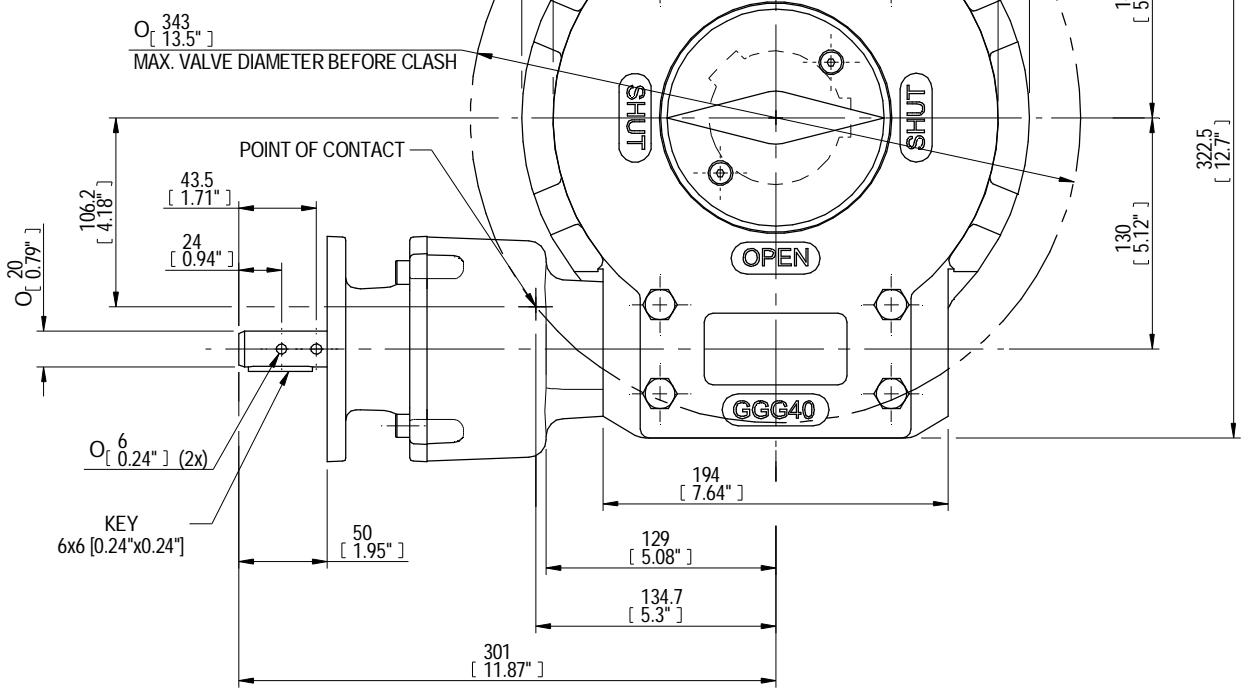
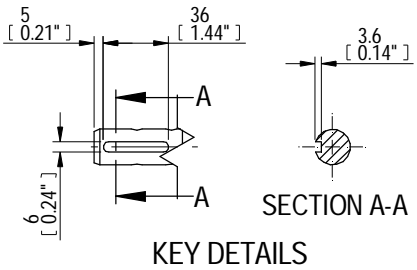
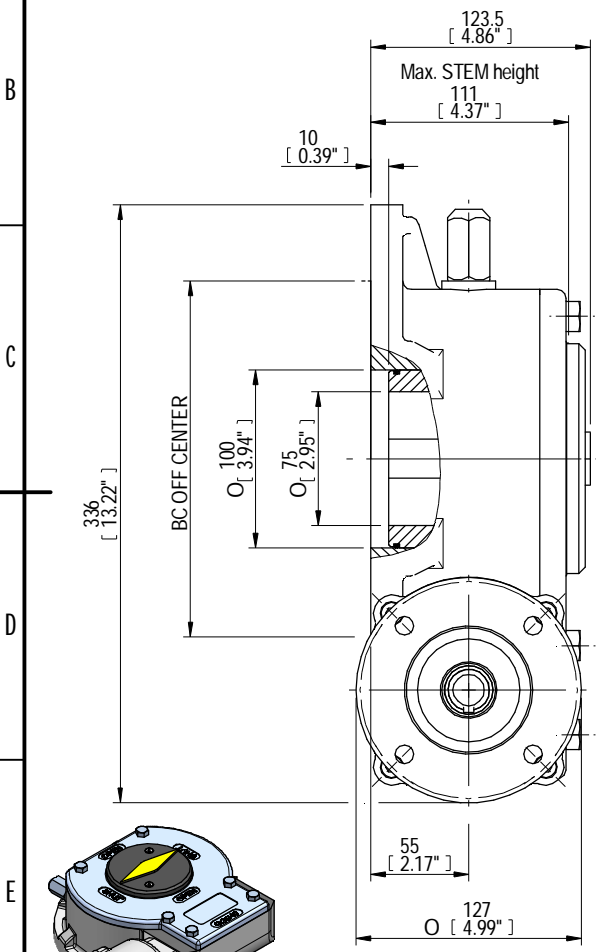
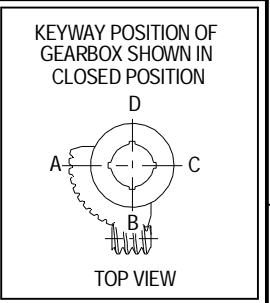


DESCRIPTION				MOUNTING HOLES - BOLT CIRCLE OFF CENTRES				BORE; STEM ACCEPTANCE WITH KEYWAY IN ACCORDING WITH STANDARD			TORQUE		
RATIO	TURNS TO CLOSE	TRAVEL (1/4 TURN)	WEIGHT	NR of HOLES	MIN ENVELOP PCD - ØHOLE	MAX ENVELOP PCD + ØHOLE	ACCORDING TO ISO 5211 / MSS SP-101	MIN	MAX	STANDARD	OUTPUT	INPUT	MA
217:1	54.25	-5° TO 95°	39 kg	4	Ø 104 mm	Ø 280 mm	F12-F14-F16	Ø 16 mm	Ø 55 mm	DIN 6885-1	7000 Nm	106 Nm	66.0u 15%
				8	Ø 104 mm	Ø 280 mm	F25						
			85 lbs	4	Ø 4.09 inch	Ø 11.02 inch	FA12-FA14-FA16	Ø 0.63 inch	Ø 2.05 inch	ANSI B17.1	61955 lbf.in.	1221 lbf.in.	
				8	Ø 4.09 inch	Ø 11.02 inch	FA25						



ISOMETRIC VIEW  
1:8

NOTE:  
SUITABLE FOR 240 SERIES INSERT.

AS PART OF CONTINUOUS PRODUCT DEVELOPMENT, ALL DETAILS SUBJECT TO CHANGE WITHOUT PRIOR NOTICE. FOR UP TO DATE DETAILS PLEASE VISIT [www.rotork.com](http://www.rotork.com)

**rotork**  
Gears  
LOSSER - THE NETHERLANDS  
[www.rotork.com](http://www.rotork.com)

This drawing is confidential and is the property of Rotork Gears and must not be reproduced either wholly or partly. All rights in respect of patents, designs and copyrights are reserved. © 2013

Document type <b>DETAIL DRAWING</b>		Title <b>E1950W WITH PR4 RH PLANETARY GEARBOX-PR4</b>	
Created <b>K. DANIEL</b> 11/11/2013		Drawing Number <b>E1950W-PR4 insert RH</b>	
Checked <b>PRABUD</b> 15/11/2013		Rev <b>A</b>	
Approved		Sheet 1 of 1 Size A3	

Rev	CN	Revised	Approved	Date	Change Description
A				15/11/2013	FIRST ISSUE