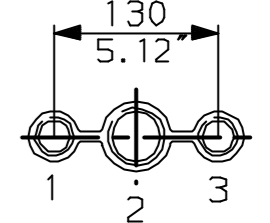


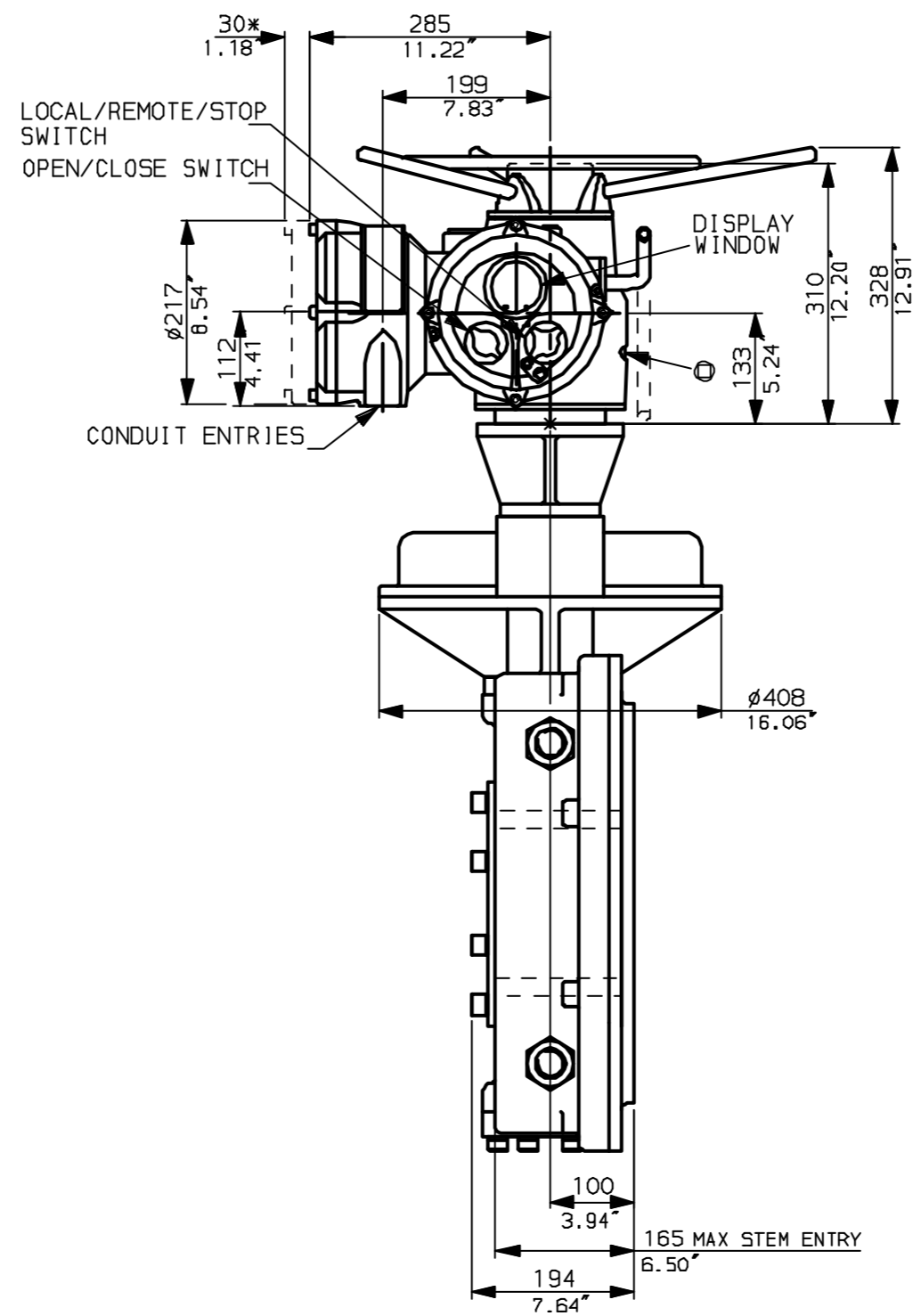
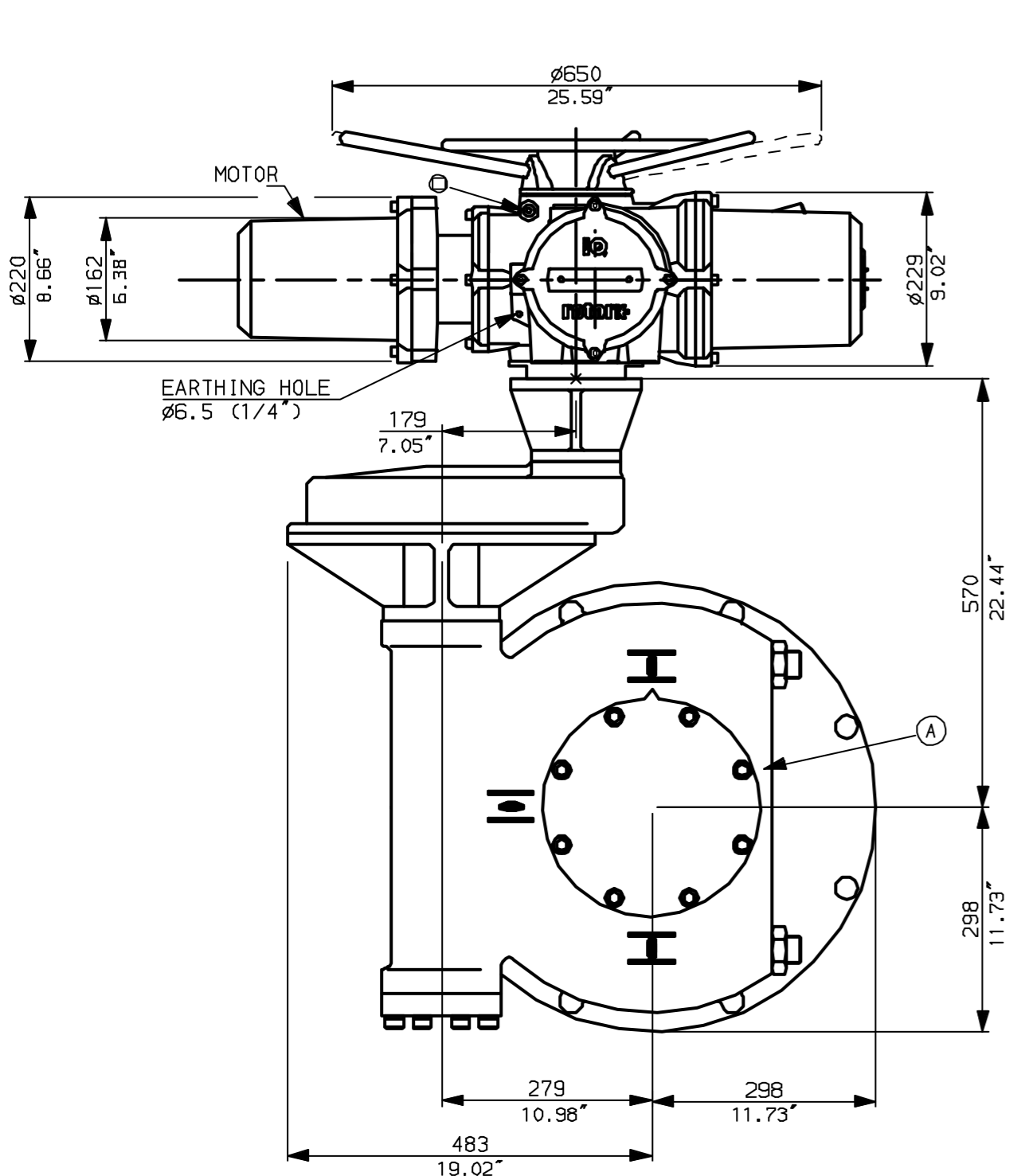
NOTES:

- *DIMENSIONS WITH '*' INDICATE COVER REMOVAL ALLOWANCE
- :NETT WEIGHT = 315kg (693lbs)
- : ϕ = OIL FILLER/DRAIN PLUG
- :THE INTERFACE PROVIDED FOR MOUNTING THE ACTUATOR OR SECOND STAGE GEARBOX ONTO THE VALVE SHOULD CONFORM TO GOOD ENGINEERING PRACTICES, ENSURING ADEQUATELY TOLERANCED LIMITS FOR PARALLELISM, PERPENDICULARITY AND CONCENTRICITY.

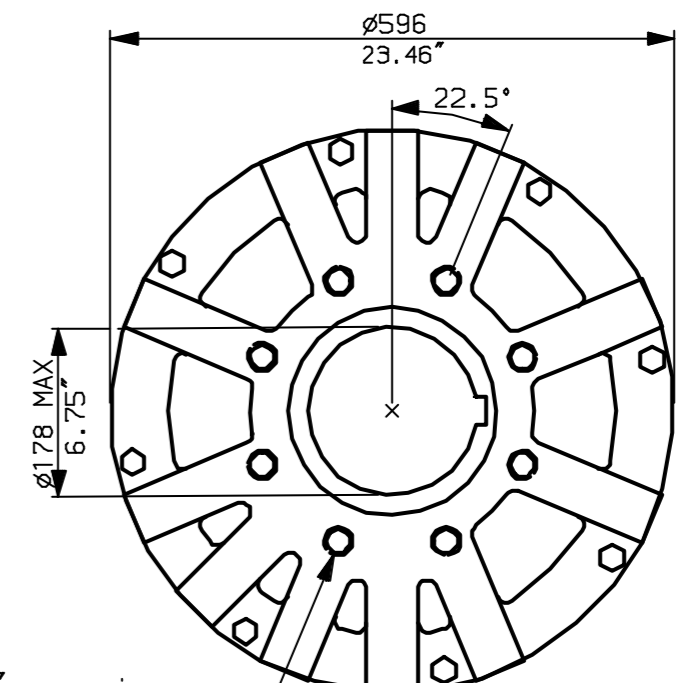
CONDUIT ENTRIES (N.T.S)



Nos.1 & 3 TAPPED 1" NPT
 No.2 TAPPED 1 1/2" NPT
 STD ALTERNATIVES IF SPECIFIED
 2 X M25, 1 X M40
 2 X PG16, 1 X PG29



N.B. KEYWAY POS. CAN BE MOVED IN 45° STEPS BY REMOVING 8 SCREWS MARKED (A) AND ROTATING OUTPUT SLEEVE.



"F" version
 8 HOLES TAPPED M20 x 30 DP
 EQUI-SPACED AS SHOWN ON A
 298 PCD (ISO 5211-F30).

"FA" version
 8 HOLES TAPPED 3/4" UNC x 1.18" dp
 EQUI-SPACED AS SHOWN ON A
 11.75" PCD (MSS SP101-FA30).

NOTE:
 Gearbox is shown with LOW Ratio Input Reducer.
 (ie Ratios 180, 240, 360, 480, 540, 720)
 See Data Sheet with IW9Rh for HIGH ratio option.

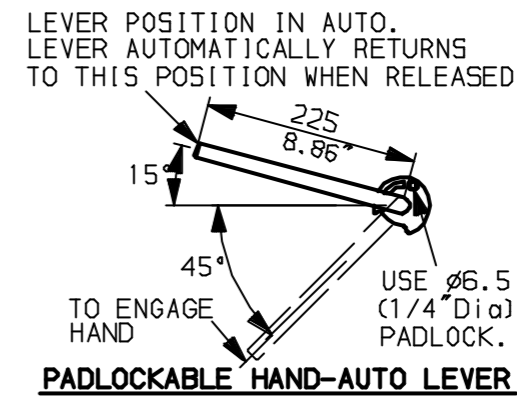
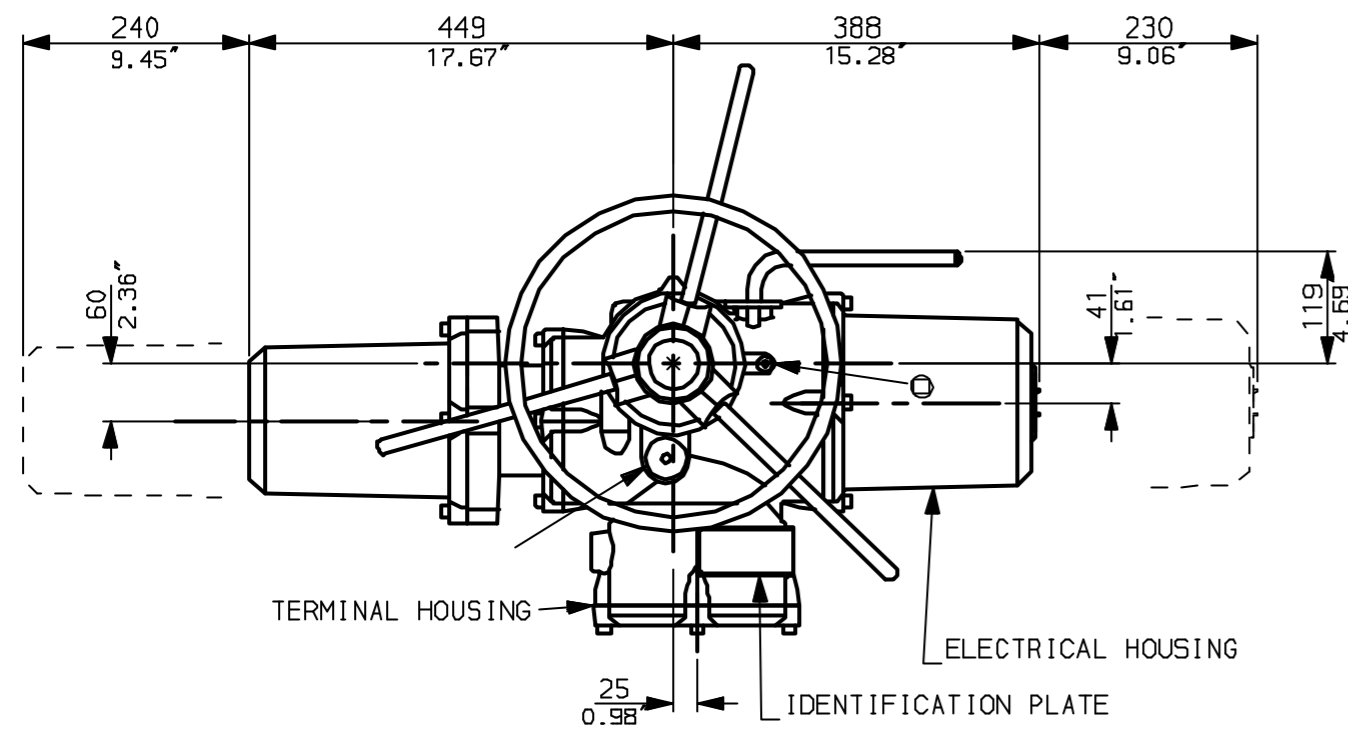
rotork
 www.rotork.com

Rotork Controls Ltd.
 Bath England, BA1 3JQ.
 (Phone 01225-733200)

Rotork Controls Inc.
 Rochester, NY 14624
 (Phone 585-328-1550)

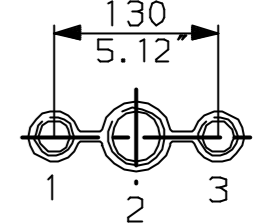
| | | |
|---------------------------|-------------|----------------|
| Title IQD20, THW, IW9RL | | |
| STANDARD DIMENSIONAL DATA | | |
| Drawn CAD | Checked PRE | Ref Data Sheet |
| Date April 04 | Job No | IQD20THW_IW9RL |

| | |
|----------------|----------------------------|
| 01 | First Issue. |
| Scale | 1:8 THIRD ANGLE PROJECTION |
| Drawing Number | IQD20THW_IW9RL |

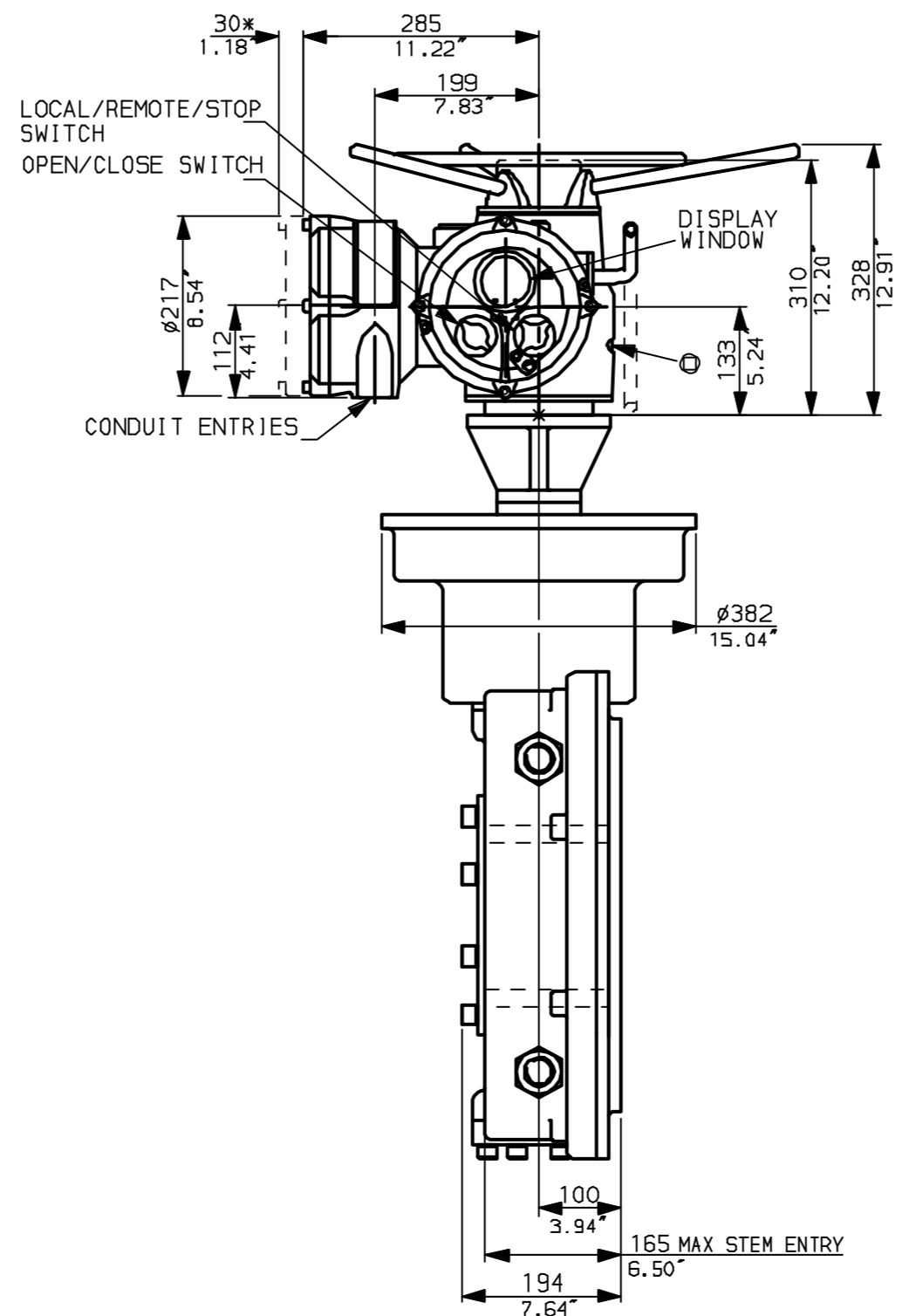
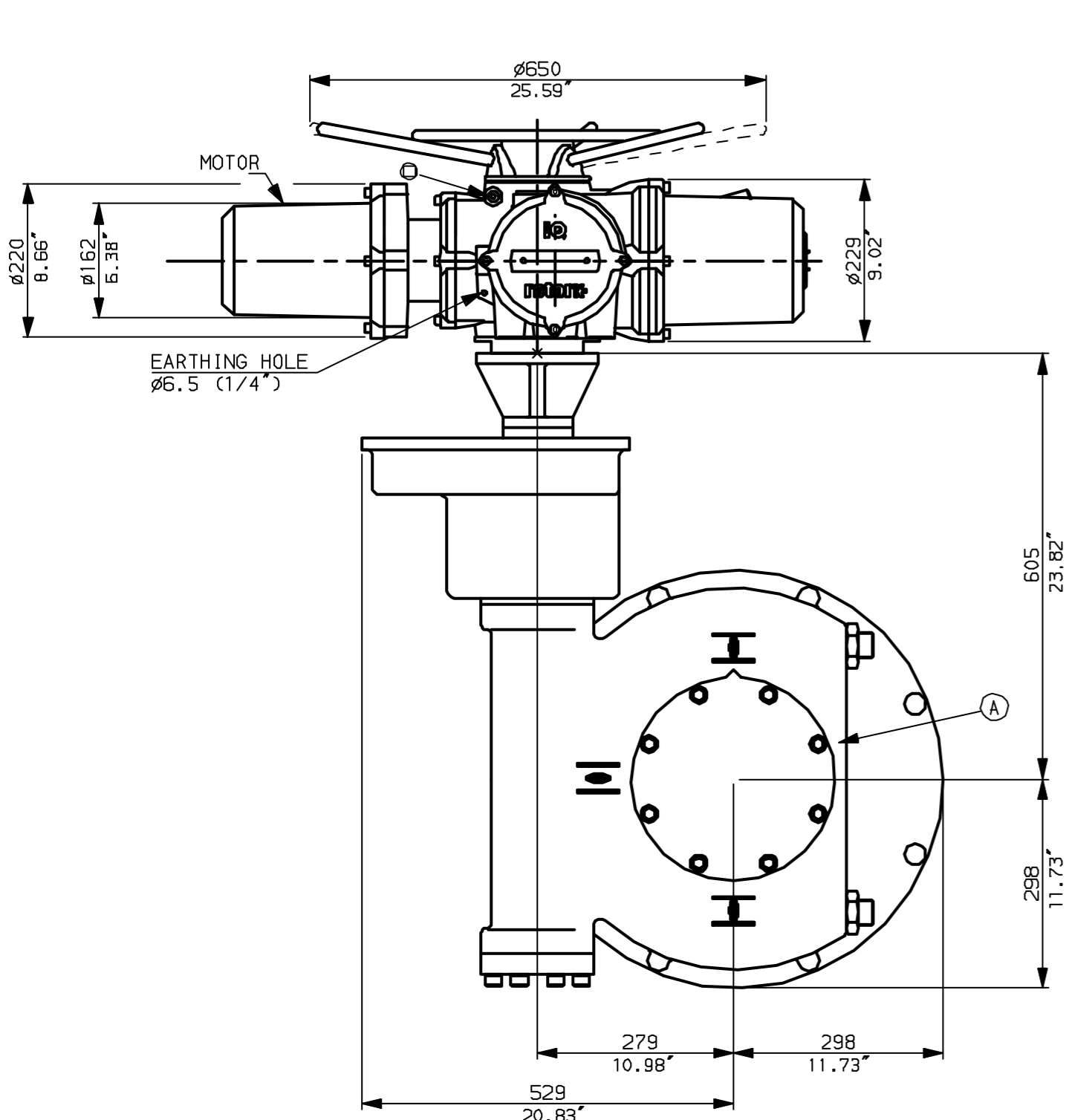


NOTES:
 * DIMENSIONS WITH '*' INDICATE COVER REMOVAL ALLOWANCE
 : NETT WEIGHT = 343kg (755lbs)
 : = OIL FILLER/DRAIN PLUG
 : THE INTERFACE PROVIDED FOR MOUNTING THE ACTUATOR OR SECOND STAGE GEARBOX ONTO THE VALVE SHOULD CONFORM TO GOOD ENGINEERING PRACTICES, ENSURING ADEQUATELY TOLERANCED LIMITS FOR PARALLELISM, PERPENDICULARITY AND CONCENTRICITY.

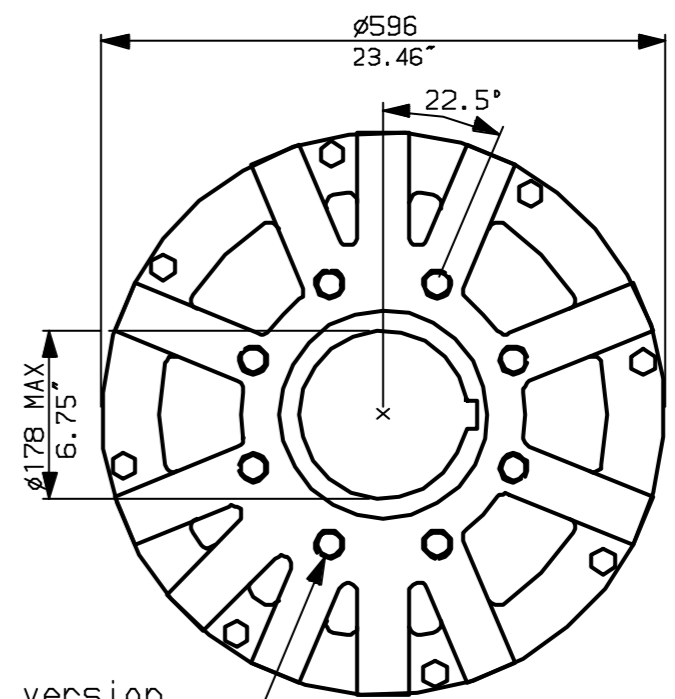
CONDUIT ENTRIES (N.T.S)



Nos.1 & 3 TAPPED 1" NPT
 No.2 TAPPED 1 1/2" NPT
 STD ALTERNATIVES IF SPECIFIED
 2 X M25, 1 X M40
 2 X PG16, 1 X PG29



N.B. KEYWAY POS. CAN BE MOVED IN 45° STEPS BY REMOVING 8 SCREWS MARKED (A) AND ROTATING OUTPUT SLEEVE.



"F" version
 8 HOLES TAPPED M20 x 30 DP
 EQUI-SPACED AS SHOWN ON A
 298 PCD (ISO 5211-F30).

"FA" version
 8 HOLES TAPPED 3/4" UNC x 1.18" dp
 EQUI-SPACED AS SHOWN ON A
 11.75" PCD (MSS SP101-FA30).



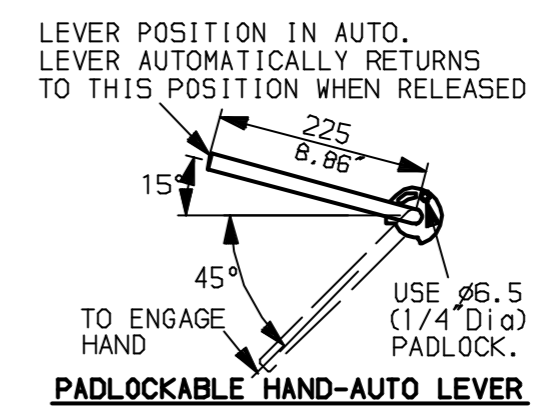
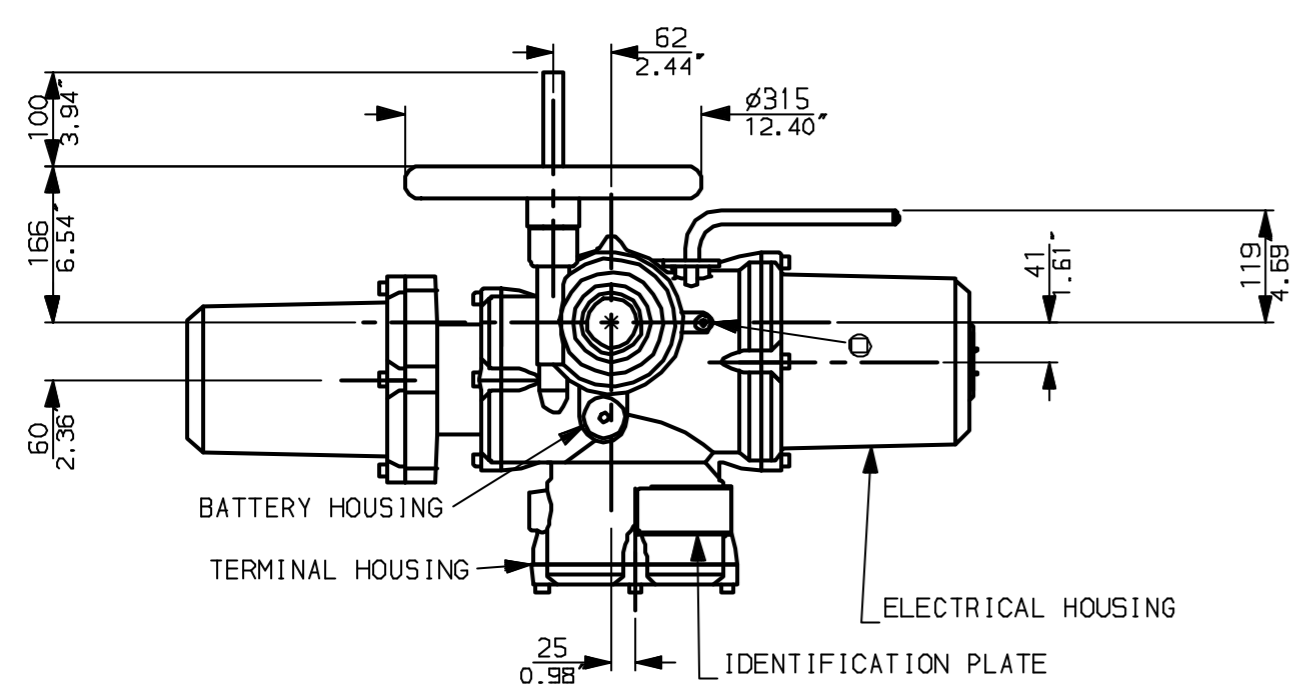
Rotork Controls Ltd.
 Bath England, BA1 3JQ.
 (Phone 01225-733200)
 Rotork Controls Inc.
 Rochester, NY 14624
 (Phone 585-328-1550)

| | | |
|---------------------------|-------------|----------------|
| Title IQD20, THW, IW9Rh, | | |
| STANDARD DIMENSIONAL DATA | | |
| Drawn CAD | Checked PRE | Ref Data Sheet |
| Date April 04 | Job No | IQD20THW_IW9Rh |

NOTE:
 Gearbox is shown with HIGH Ratio Input Reducer.
 (ie Ratios 960, 1080, 1440, 2160, 2520, 3000)
 See Data Sheet with IW9RL for LOW ratio option.

| | |
|----------------|----------------------------|
| 01 | First Issue. |
| Scale | 1:8 THIRD ANGLE PROJECTION |
| Drawing Number | IQD20THW_IW9Rh |

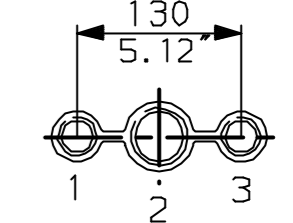
G
F
E
D
C
B
A



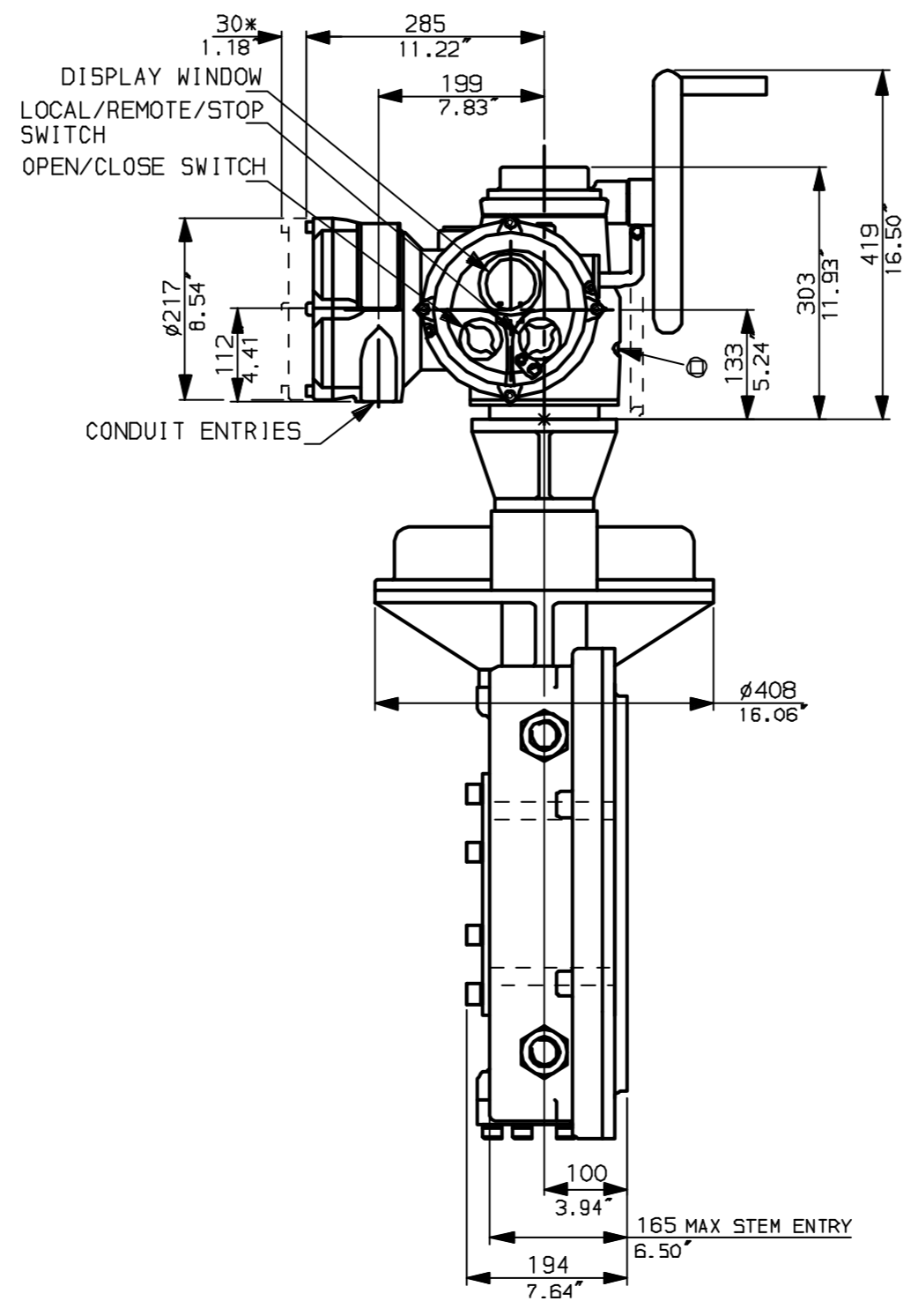
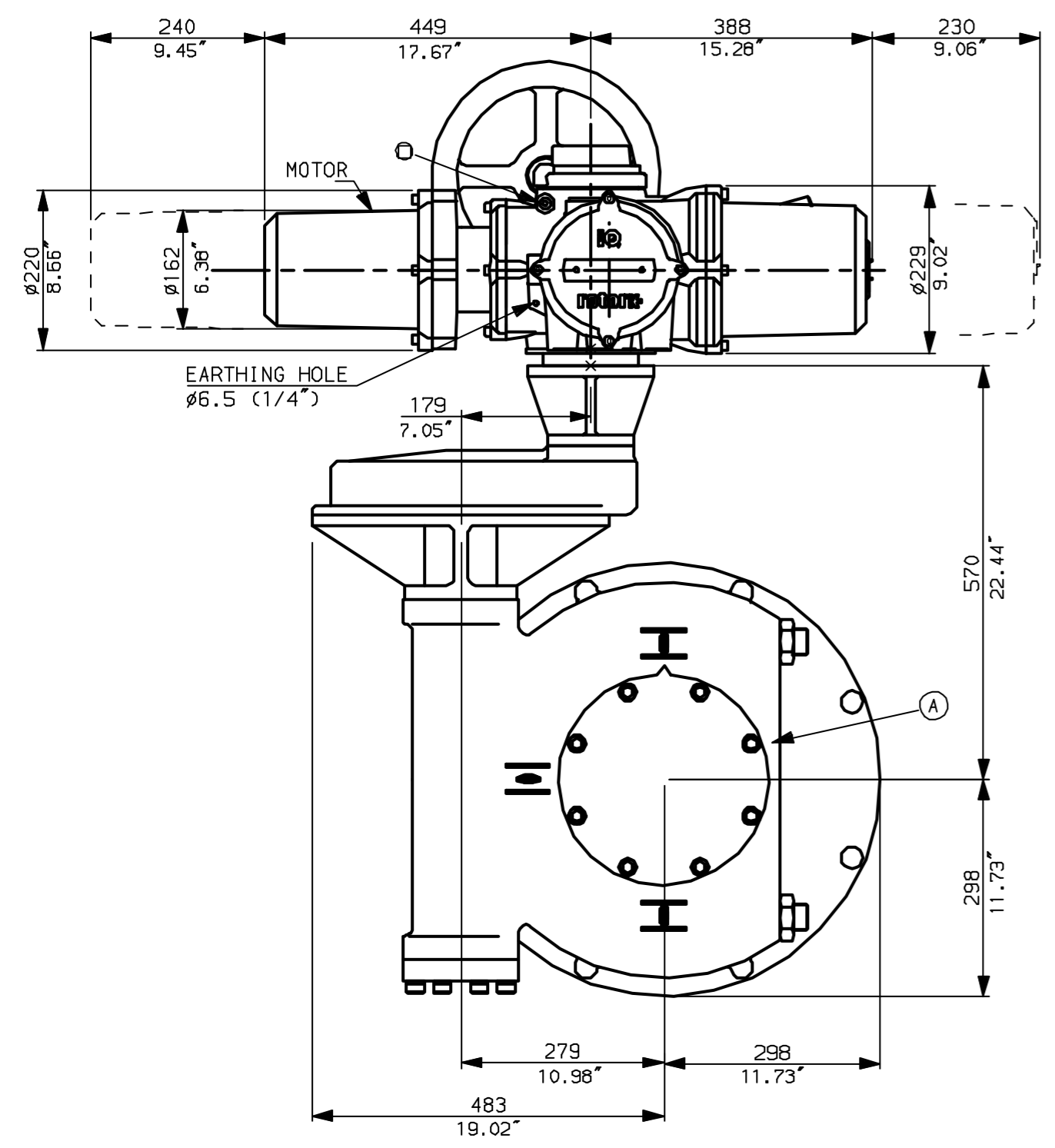
NOTES:

- DIMENSIONS WITH '*' INDICATE COVER REMOVAL ALLOWANCE
- NETT WEIGHT = 315kg (693lbs)
- ϕ = OIL FILLER/DRAIN PLUG
- THE INTERFACE PROVIDED FOR MOUNTING THE ACTUATOR OR SECOND STAGE GEARBOX ONTO THE VALVE SHOULD CONFORM TO GOOD ENGINEERING PRACTICES, ENSURING ADEQUATELY TOLERANCED LIMITS FOR PARALLELISM, PERPENDICULARITY AND CONCENTRICITY.

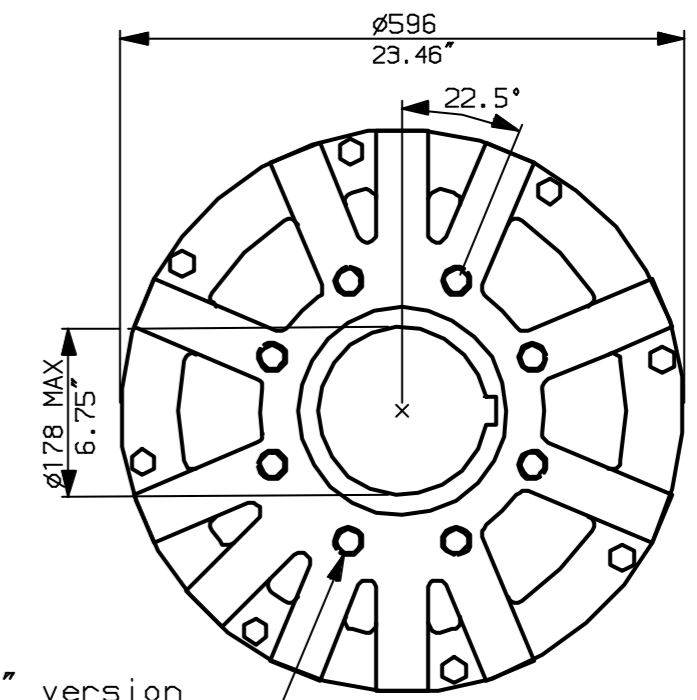
CONDUIT ENTRIES (N.T.S)



Nos.1 & 3 TAPPED 1" NPT
No.2 TAPPED 1 1/2" NPT
STD ALTERNATIVES IF SPECIFIED
2 X M25, 1 X M40
2 X PG16, 1 X PG29



N.B. KEYWAY POS. CAN BE MOVED IN 45° STEPS BY REMOVING 8 SCREWS MARKED (A) AND ROTATING OUTPUT SLEEVE.



"F" version
8 HOLES TAPPED M20 x 30 DP
EQUI-SPACED AS SHOWN ON A
298 PCD (150 5211-F30).

"FA" version
8 HOLES TAPPED 3/4" UNC x 1.18" dp
EQUI-SPACED AS SHOWN ON A
11.75" PCD (MSS SP101-FA30).



Rotork Controls Ltd.
Bath England, BA1 3JQ.
(Phone 01225-733200)

Rotork Controls Inc.
Rochester, NY 14624
(Phone 585-328-1550)

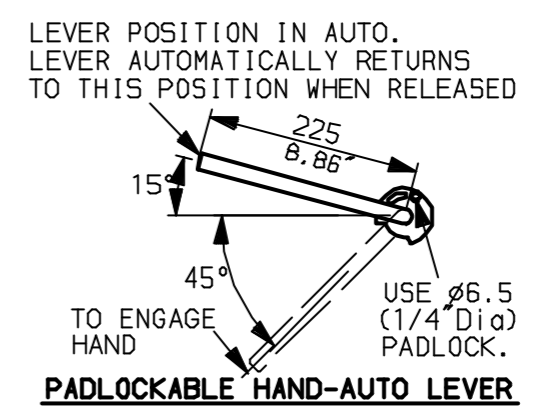
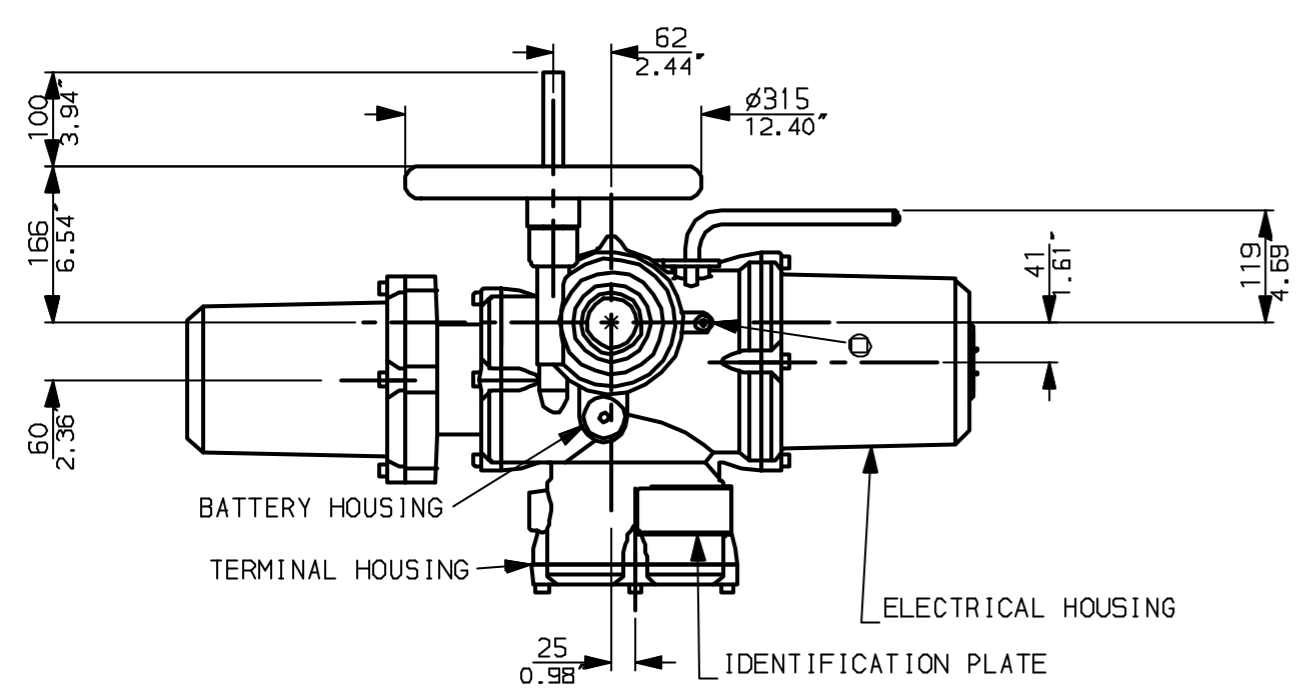
| | | |
|---------------------------|-------------|----------------|
| Title IQD20, SHW, IW9RL | | |
| STANDARD DIMENSIONAL DATA | | |
| Drawn CAD | Checked PRE | Ref Data Sheet |
| Date April 04 | Job No | IQD20SHW_IW9RL |

NOTE:
Gearbox is shown with LOW Ratio Input Reducer.
(ie Ratios 180, 240, 360, 480, 540, 720)
See Data Sheet with IW9Rh for HIGH ratio option.

| | |
|----------------|----------------------------|
| 01 | First Issue. |
| Scale | 1:8 THIRD ANGLE PROJECTION |
| Drawing Number | IQD20SHW_IW9RL |

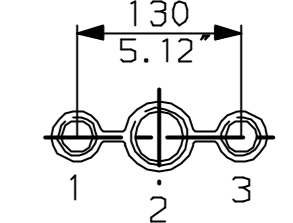
1 | 2 | 3 | 4 | 5 | 6 | 7 | 8 | 9 | 10

G
F
E
D
C
B
A

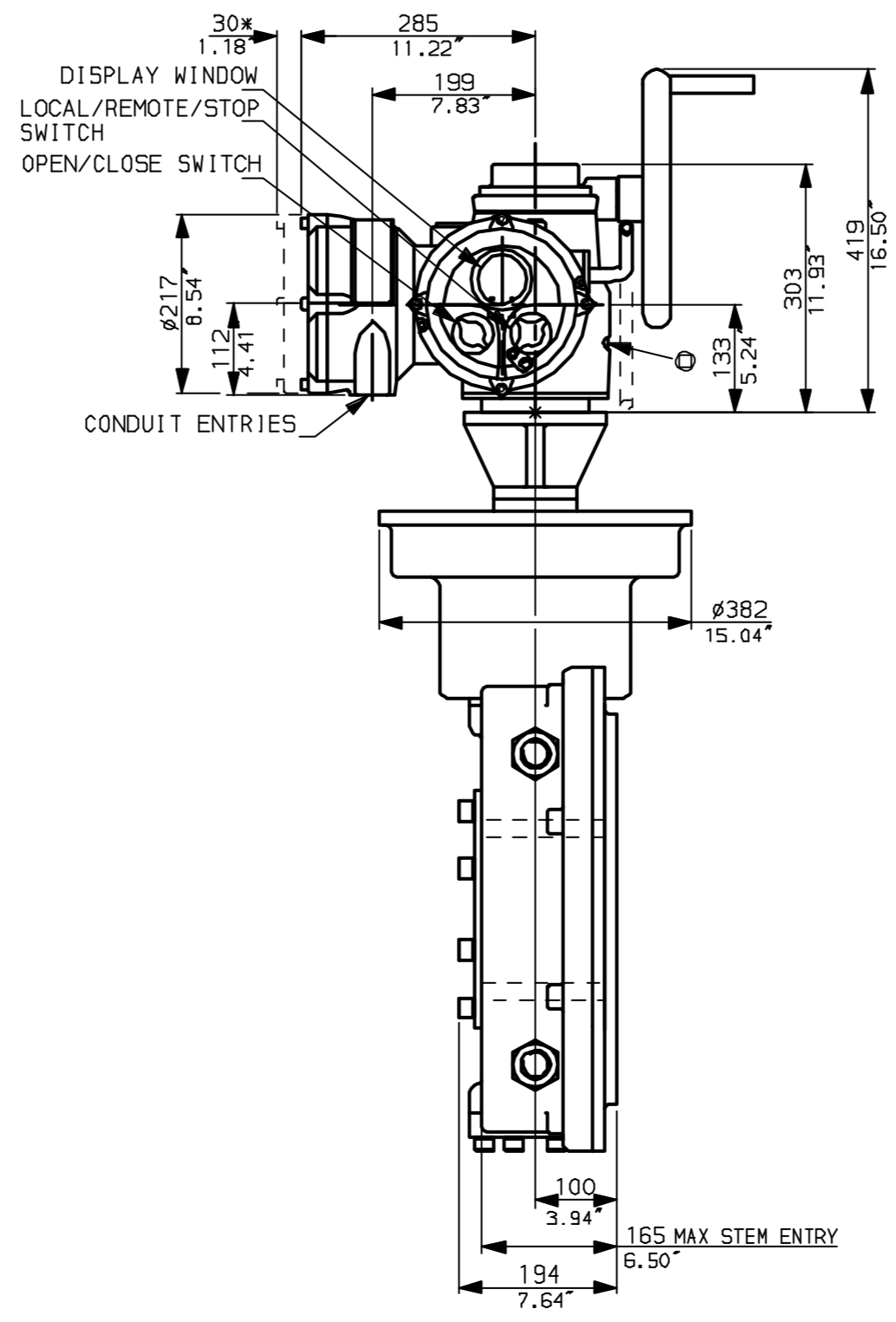
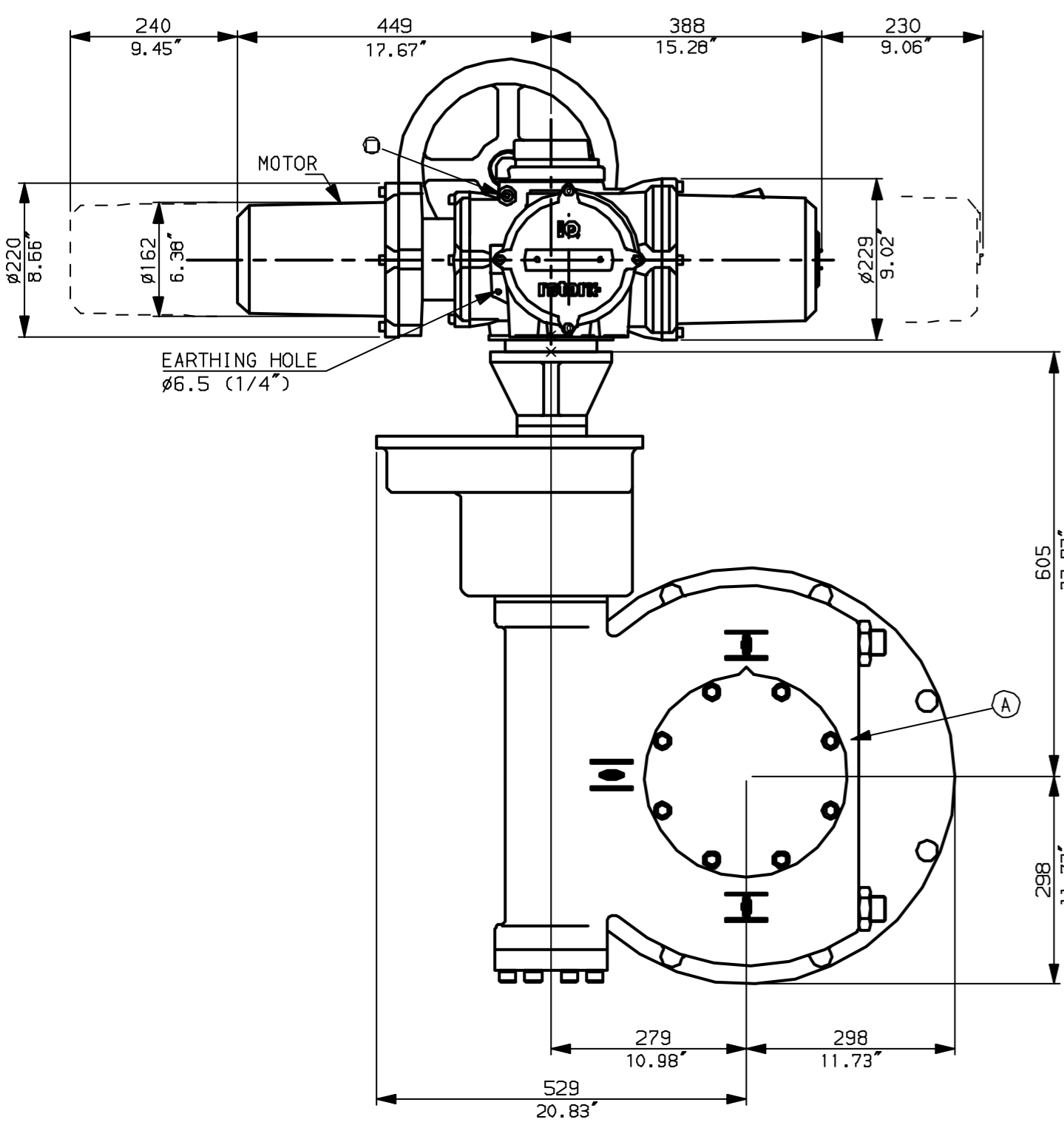


NOTES:
 * DIMENSIONS WITH '*' INDICATE COVER REMOVAL ALLOWANCE
 NETT WEIGHT = 343kg (755lbs)
 ○ = OIL FILLER/DRAIN PLUG
 THE INTERFACE PROVIDED FOR MOUNTING THE ACTUATOR OR SECOND STAGE GEARBOX ONTO THE VALVE SHOULD CONFORM TO GOOD ENGINEERING PRACTICES, ENSURING ADEQUATELY TOLERANCED LIMITS FOR PARALLELISM, PERPENDICULARITY AND CONCENTRICITY.

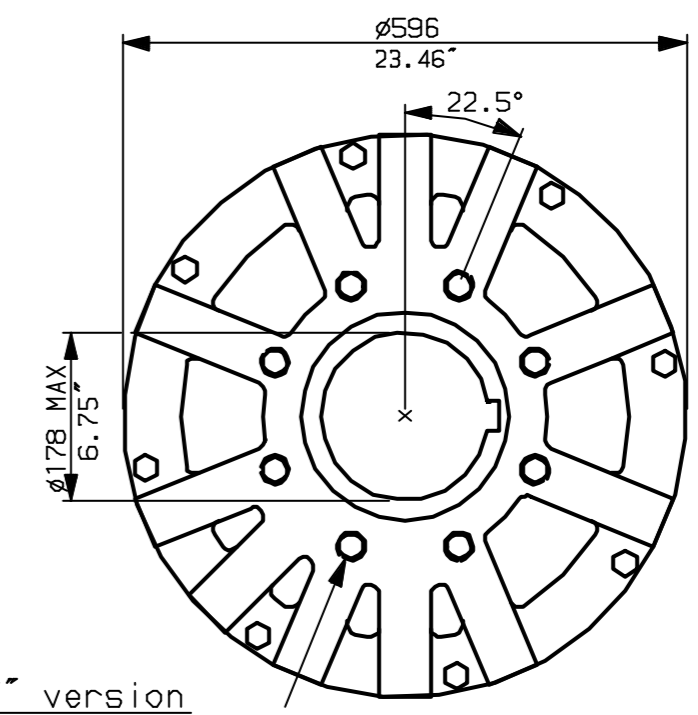
CONDUIT ENTRIES (N.T.S)



Nos.1 & 3 TAPPED 1" NPT
 No.2 TAPPED 1 1/2" NPT
 STD ALTERNATIVES IF SPECIFIED
 2 X M25, 1 X M40
 2 X PG16, 1 X PG29



N.B. KEYWAY POS. CAN BE MOVED IN 45° STEPS BY REMOVING 8 SCREWS MARKED (A) AND ROTATING OUTPUT SLEEVE.



"F" version
 8 HOLES TAPPED M20 x 30 DP
 EQUI-SPACED AS SHOWN ON A
 298 PCD (ISO 5211-F30).
 "FA" version
 8 HOLES TAPPED 3/4"UNCx1.18"dp
 EQUI-SPACED AS SHOWN ON A
 11.75" PCD (MSS SP101-FA30).

NOTE:
 Gearbox is shown with HIGH Ratio Input Reducer.
 (ie Ratios 960,1080,1440,2160,2520,3000)
 See Data Sheet with IW9RL for LOW ratio option.



Rotork Controls Ltd.
 Bath England, BA1 3JQ.
 (Phone 01225-733200)
 Rotork Controls Inc.
 Rochester, NY 14624
 (Phone 585-328-1550)

| | | |
|---------------------------|-------------|----------------|
| Title IQD20, SHW, IW9Rh, | | |
| STANDARD DIMENSIONAL DATA | | |
| Drawn CAD | Checked PRE | Ref Data Sheet |
| Date April 04 | Job No | IQD20SHW_IW9Rh |

| | |
|----------------|----------------------------|
| 01 | First Issue. |
| Scale | 1:8 THIRD ANGLE PROJECTION |
| Drawing Number | IQD20SHW_IW9Rh |

1 | 2 | 3 | 4 | 5 | 6 | 7 | 8 | 9 | 10