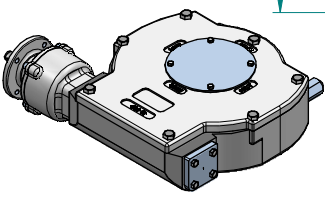
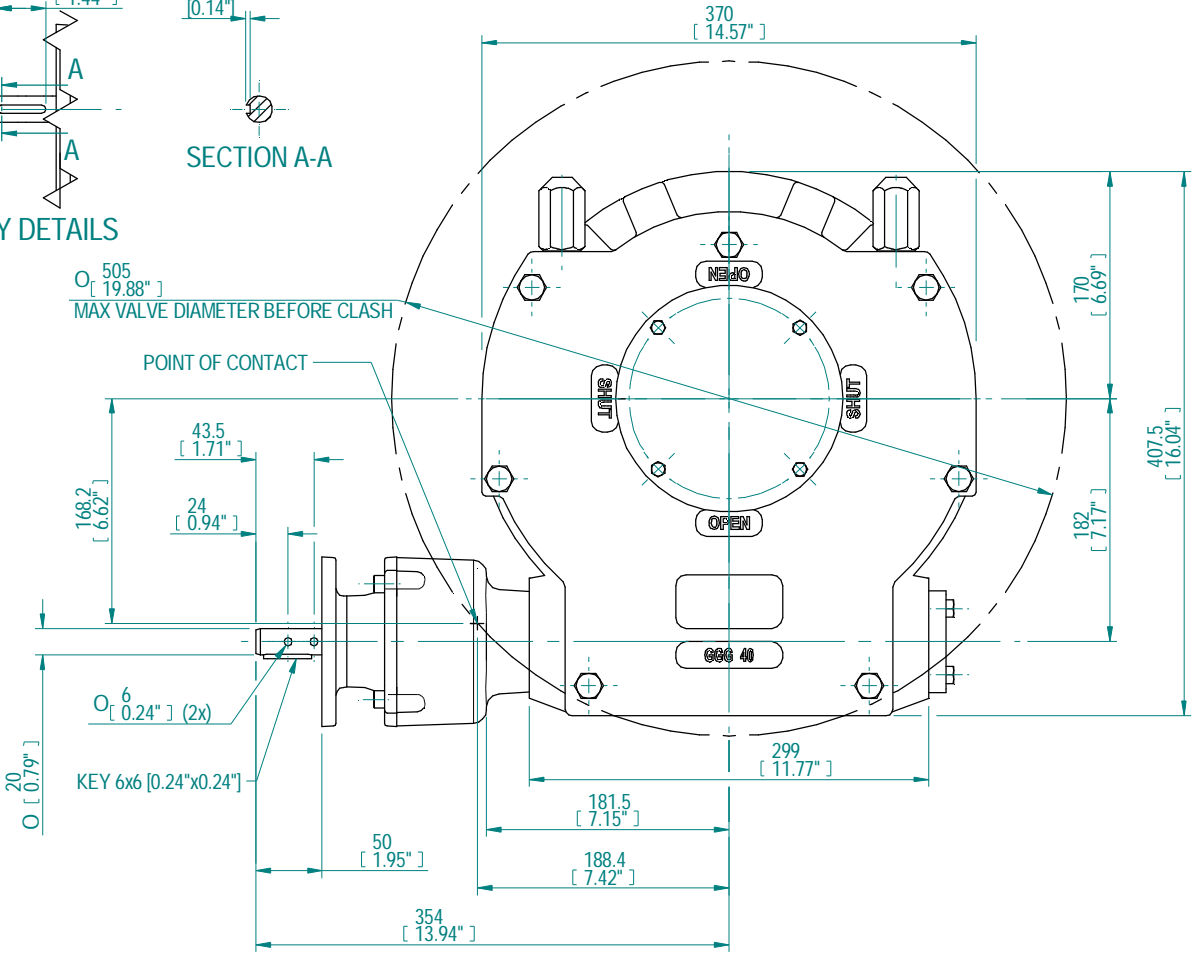
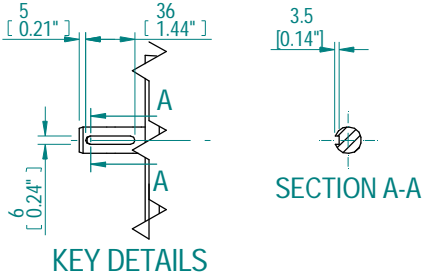
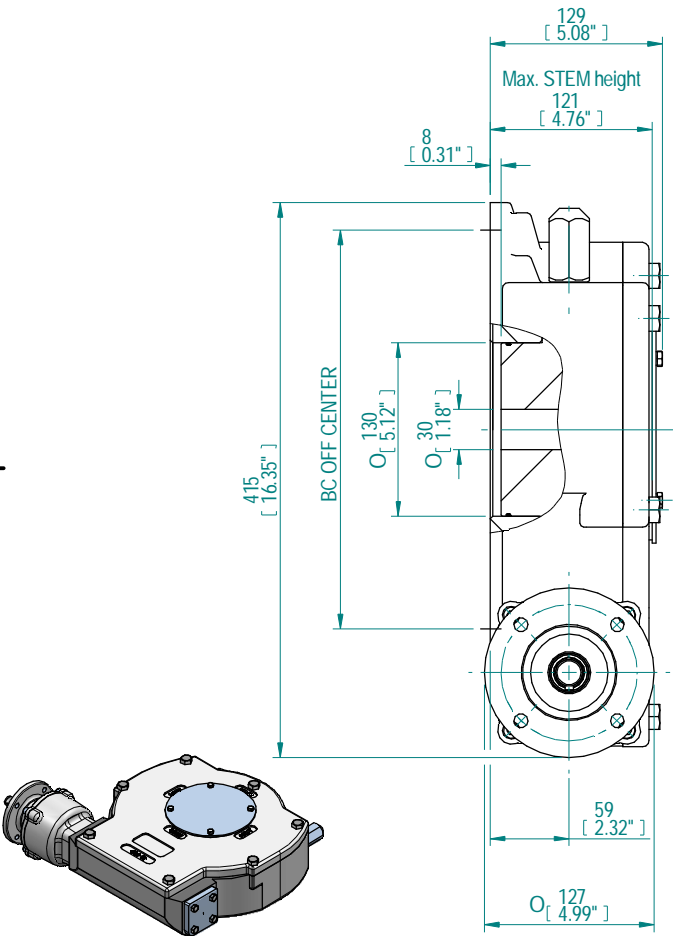
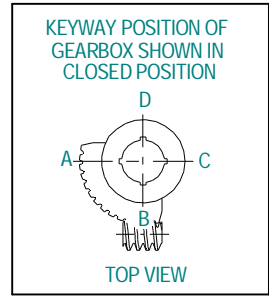


DESCRIPTION				MOUNTING HOLES - BOLT CIRCLE (OFF CENTRES)				BORE; STEM ACCEPTANCE WITH KEYWAY IN ACCORDING WITH STANDARD			TORQUE		
RATIO	URNS TO CLOSE	TRAVEL (1/4 TURN)	WEIGHT	NR of HOLES	MIN ENVELOP PCD - ØHOLE	MAX ENVELOP PCD + ØHOLE	ACCORDING TO ISO 5211 / MSS SP-101	MIN	MAX	STANDARD	OUTPUT	INPUT	MA
468:1	117.0	-5° TO 95°	64.2 kg	4	Ø134 mm	Ø335 mm	F16	Ø30 mm	Ø100 mm	DIN 6885-1	17000 Nm	121 Nm	140±15%
				8	Ø134 mm	Ø335 mm	F25 - F30						
			142 lbs	4	Ø5.28 inch	Ø13.19 inch	FA16	Ø1.18 inch	Ø3.94 inch	ANSI B17.1	150620 lbf.in	1075 lbf.in	
				8	Ø5.28 inch	Ø13.19 inch	FA25 - FA30						



ISOMETRIC VIEW
1:10

Rev	CN	Revised	Approved	Date	Change Description
A				12/11/2013	FIRST ISSUE

AS PART OF CONTINUOUS PRODUCT DEVELOPMENT, ALL DETAILS SUBJECT TO CHANGE WITHOUT PRIOR NOTICE. FOR UP TO DATE DETAILS PLEASE VISIT www.rotork.com

rotork Gears
LOSSER - THE NETHERLANDS
www.rotork.com

This drawing is confidential and is the property of Rotork Gears and must not be reproduced either wholly or partly. All rights in respect of patents, designs and copyrights are reserved. © 2013

Document type	DETAIL DRAWING		Title	E6800G WITH PR6 BU RH PLANETARY GEAR BOX- PR6
	Dimensions in mm Scale 1:4		Drawing Number	E6800G-PR6 BU RH
Created	MD RIYAZ	6-11-2013	Rev	A
Checked	PRABU D	12-11-2013	Sheet	1 of 1
Approved			Size	A3

Rev.01