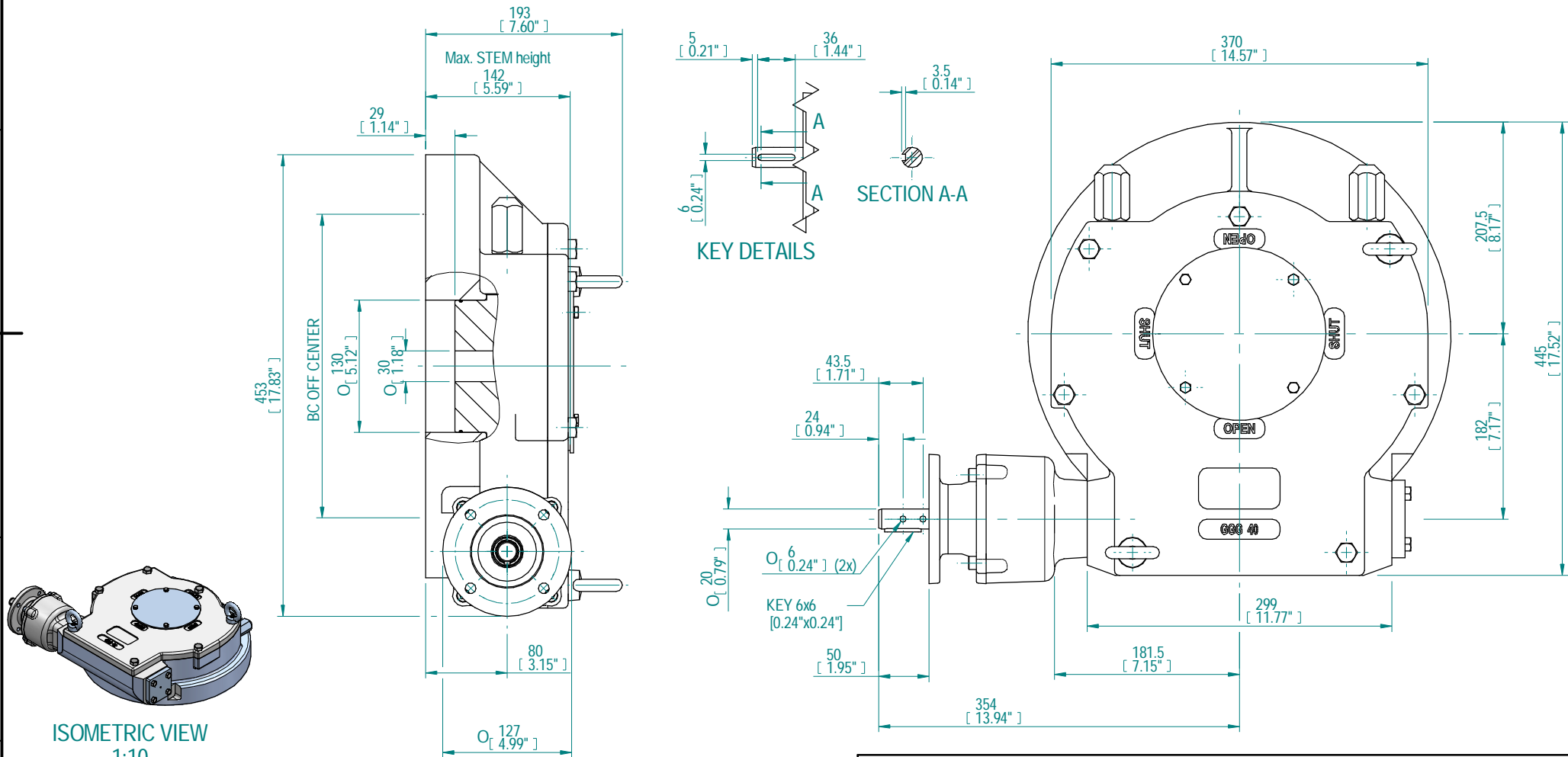
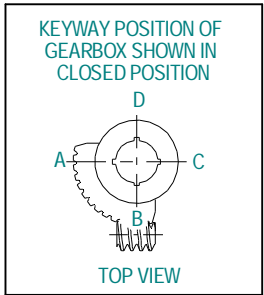


DESCRIPTION				MOUNTING HOLES - BOLT CIRCLE (OFF CENTRES)			BORE: STEM ACCEPTANCE WITH KEYWAY IN ACCORDING WITH STANDARD			TORQUE					
RATIO	TURNS TO CLOSE	TRAVEL (1/4 TURN)	WEIGHT	NR OF HOLES	MIN ENVELOP PCD - ØHOLE	MAX ENVELOP PCD + ØHOLE	ACCORDING TO ISO 5211 / MSS SP-101	MIN	MAX	STANDARD	OUTPUT	INPUT	MA		
468:1	117	-5° TO 95°	64.2 kg	4	Ø134 mm	Ø405 mm	F16	Ø30 mm	Ø100 mm	DIN 6885-1	17000 Nm	121 Nm	140 u 15%		
				8	Ø134 mm	Ø405 mm	F25 - F30 -F35								
			142 lbs	4	Ø5.28 inch	Ø15.94 inch	FA16								
				8	Ø5.28 inch	Ø15.94 inch	FA25 - FA30 -FA35								



Rev	CN	Revised	Approved	Date	Change Description
A				12/11/2013	FIRST ISSUE

AS PART OF CONTINUOUS PRODUCT DEVELOPMENT, ALL DETAILS SUBJECT TO CHANGE WITHOUT PRIOR NOTICE. FOR UP TO DATE DETAILS PLEASE VISIT [www.rotork.com](http://www.rotork.com)

**rotork** Gears  
LOSSER - THE NETHERLANDS  
[www.rotork.com](http://www.rotork.com)

This drawing is confidential and is the property of Rotork Gears and must not be reproduced either wholly or partly. All rights in respect of patents, designs and copyrights are reserved. © 2013

Document type	DETAIL DRAWING		Title	E6800 LB WITH PR6 RH PLANETARY GEARBOX- PR6
	Dimensions in mm		Scale 1:4	
Created	MD RIYAZ	6-11-2013	Drawing Number	E6800G-PR6 LB BU RH
Checked	PRABU D	12-11-2013	Rev	A
Approved			Sheet	1 of 1 Size A3

Rev 01