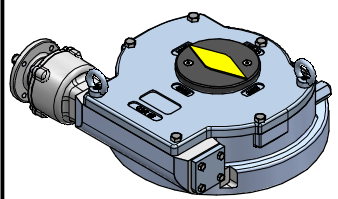
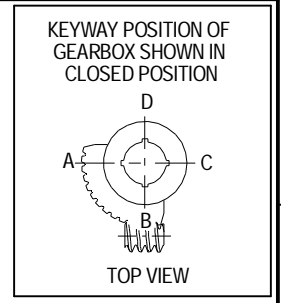
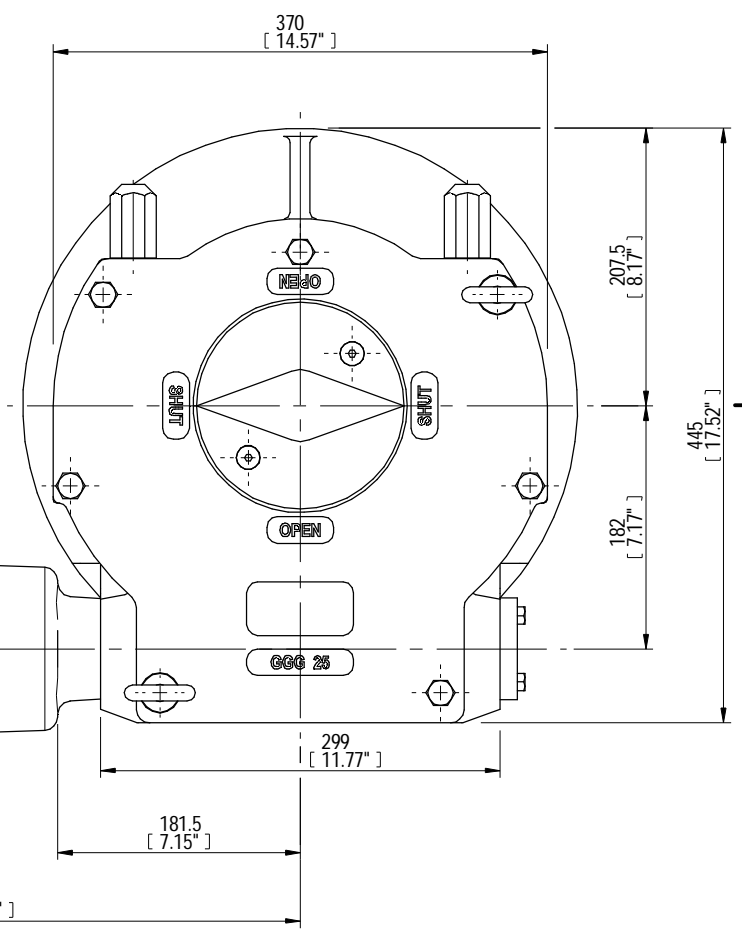
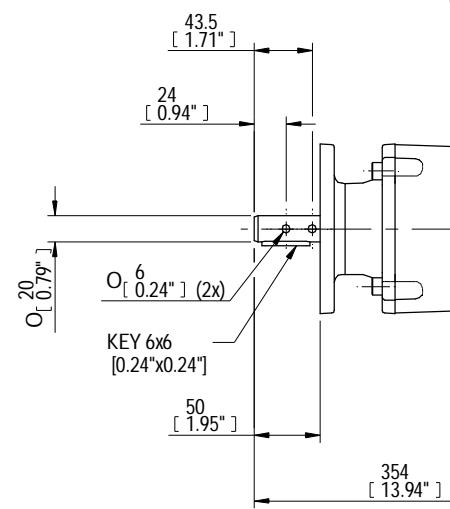
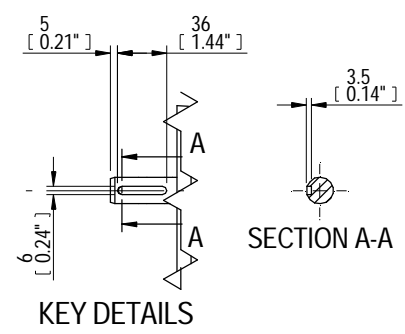
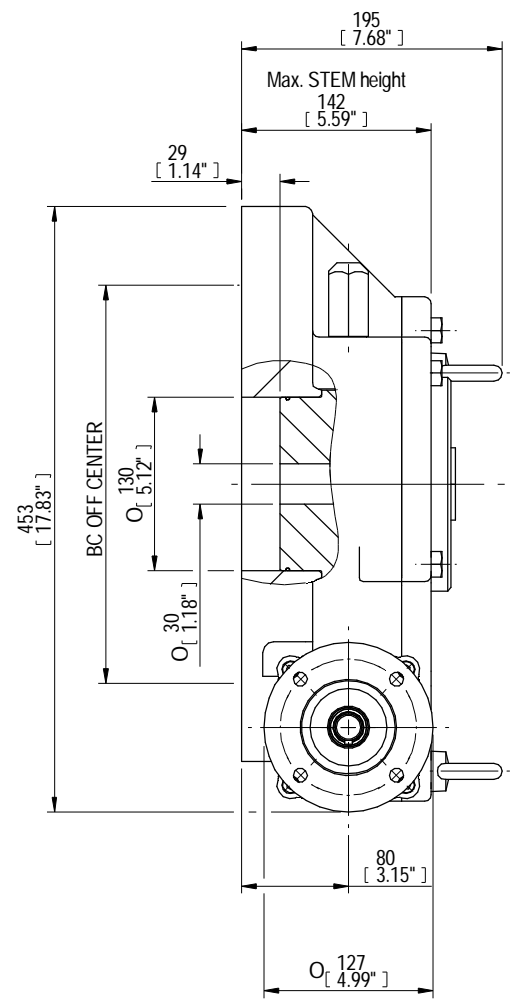


DESCRIPTION				MOUNTING HOLES - BOLT CIRCLE (OFF CENTRES)				BORE; STEM ACCEPTANCE WITH KEYWAY IN ACCORDING WITH STANDARD			TORQUE		
RATIO	URNS TO CLOSE	TRAVEL (1/4 TURN)	WEIGHT	NR of HOLES	MIN ENVELOP PCD - ØHOLE	MAX ENVELOP PCD + ØHOLE	ACCORDING TO ISO 5211 / MSS SP-101	MIN	MAX	STANDARD	OUTPUT	INPUT	MA
468:1	117	-5° TO 95°	64.2 kg	4	Ø134 mm	Ø405 mm	F16	Ø30 mm	Ø100 mm	DIN 6885-1	17000 Nm	121 Nm	140 u 15%
			142 lbs	8	Ø134 mm	Ø405 mm	F25 - F30 -F35						
				4	Ø5.28 inch	Ø15.94 inch	FA16						
				8	Ø5.28 inch	Ø15.94 inch	FA25 - FA30 -FA35						



ISOMETRIC VIEW
1:10



AS PART OF CONTINUOUS PRODUCT DEVELOPMENT, ALL DETAILS SUBJECT TO CHANGE WITHOUT PRIOR NOTICE. FOR UP TO DATE DETAILS PLEASE VISIT www.rotork.com

<p>LOSSER - THE NETHERLANDS www.rotork.com</p>	This drawing is confidential and is the property of Rotork Gears and must not be reproduced either wholly or partly. All rights in respect of patents, designs and copyrights are reserved. © 2013		Document type DETAIL DRAWING	Title E6800G LB WITH PR6 RH PLANETARY GEARBOX-PR6
			Dimensions in mm Scale 1:4	Drawing Number E6800G-PR6 LB RH
	Created MD RIAZ	05/11/2013	Drawing Number E6800G-PR6 LB RH	Rev A
	Checked PRABU D	12/11/2013	Sheet 1 of 1	Size A3

Rev	CN	Revised	Approved	Date	Change Description
A				12/11/2013	FIRST ISSUE