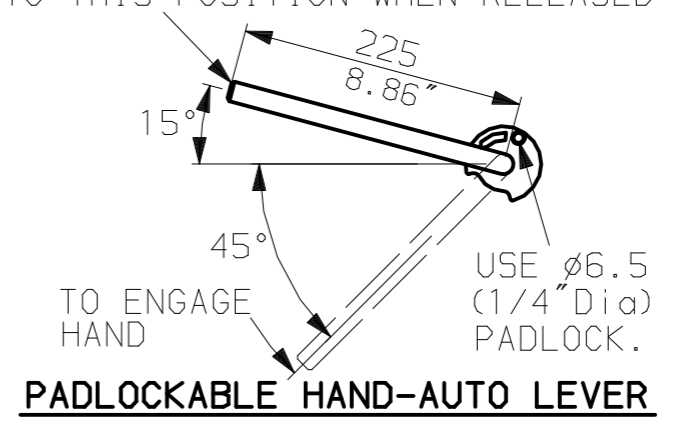
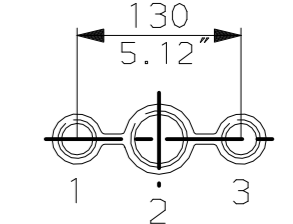


LEVER POSITION IN AUTO.
LEVER AUTOMATICALLY RETURNS
TO THIS POSITION WHEN RELEASED

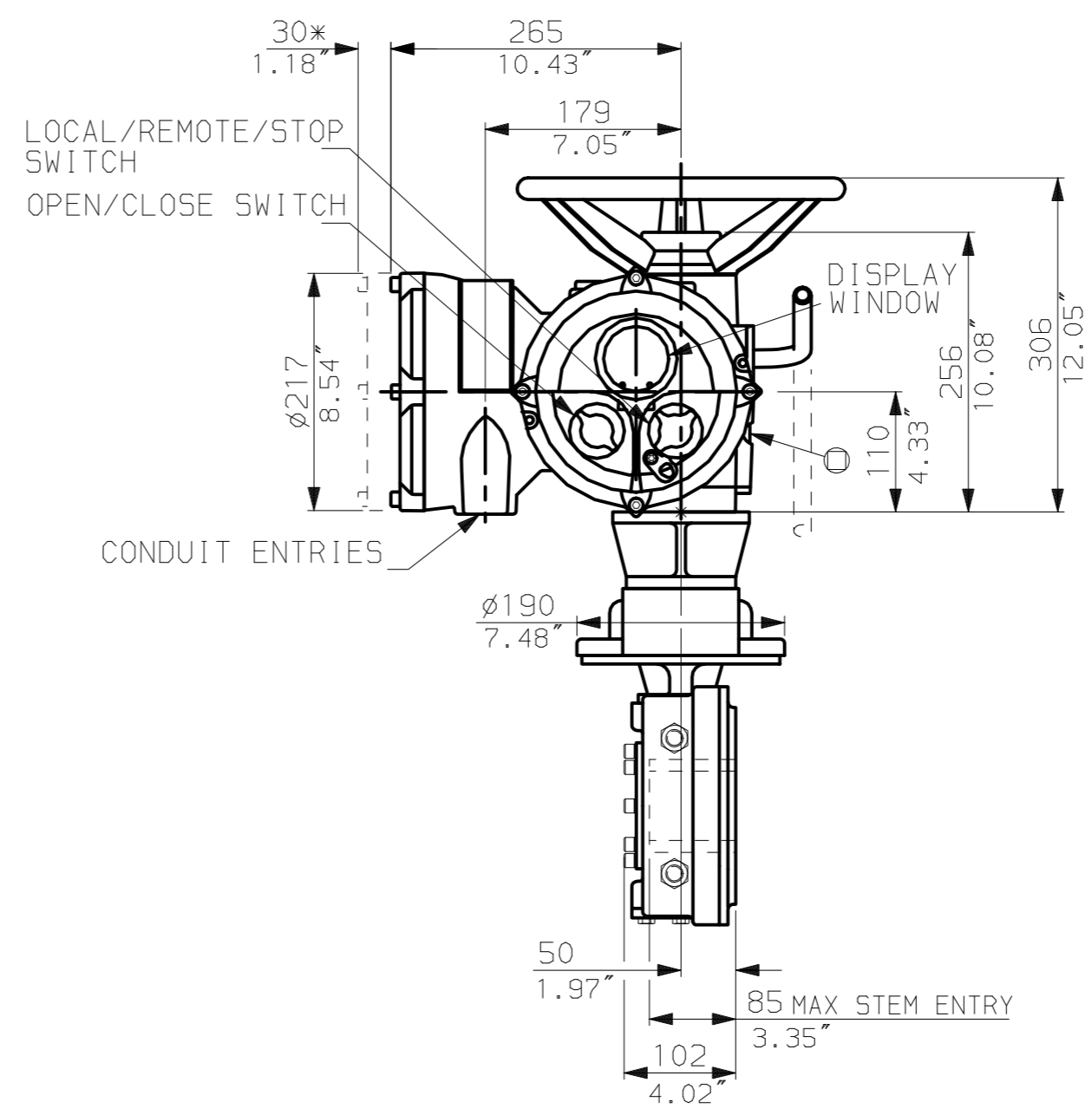
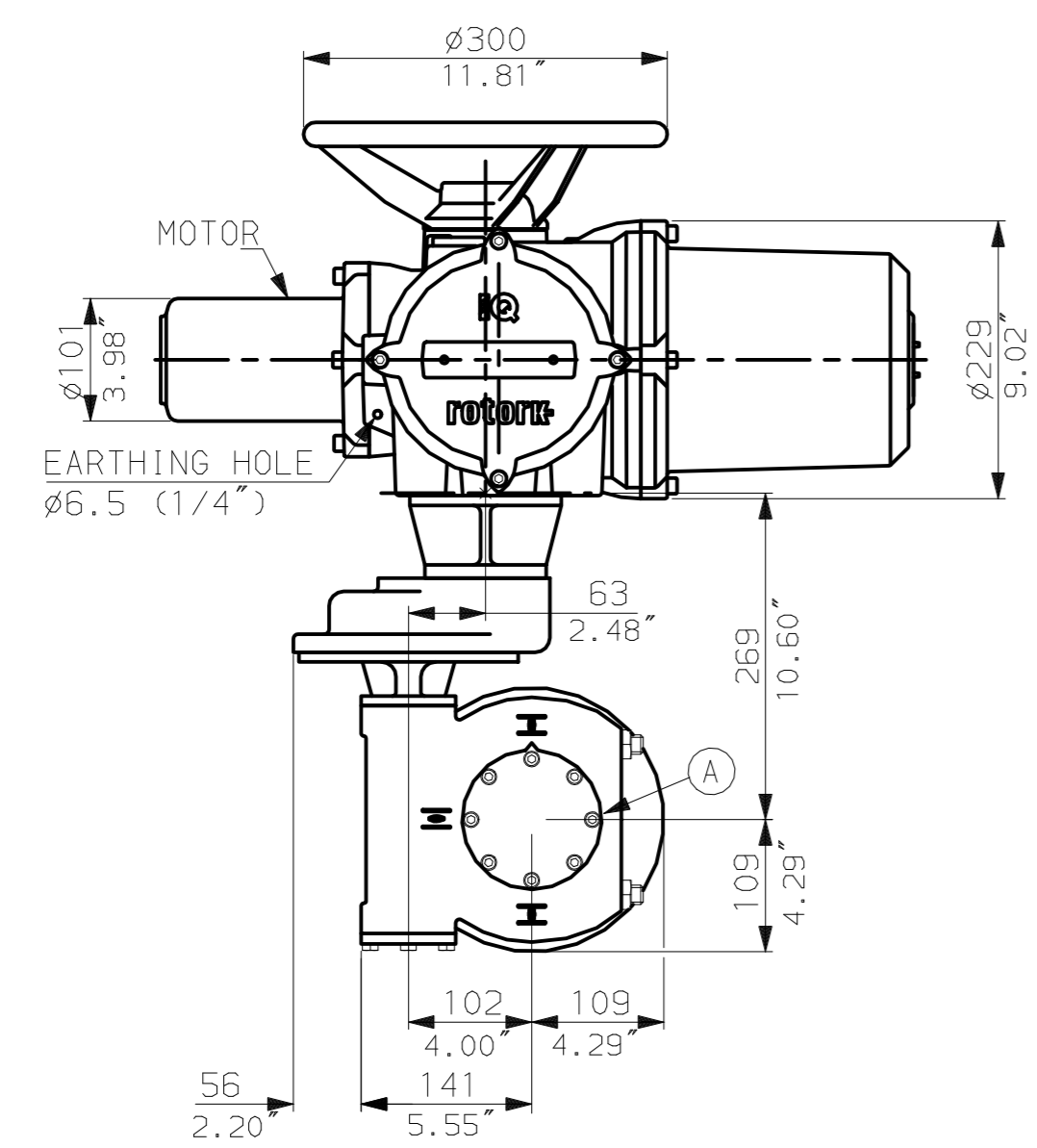


NOTES:
:DIMENSIONS WITH '*' INDICATE COVER REMOVAL ALLOWANCE
:NETT WEIGHT = 62kg (136lbs)
: = OIL FILLER/DRAIN PLUG
:THE INTERFACE PROVIDED FOR MOUNTING THE ACTUATOR OR SECOND STAGE GEARBOX ONTO THE VALVE SHOULD CONFORM TO GOOD ENGINEERING PRACTICES, ENSURING ADEQUATELY TOLERANCED LIMITS FOR PARALLELISM, PERPENDICULARITY AND CONCENTRICITY.

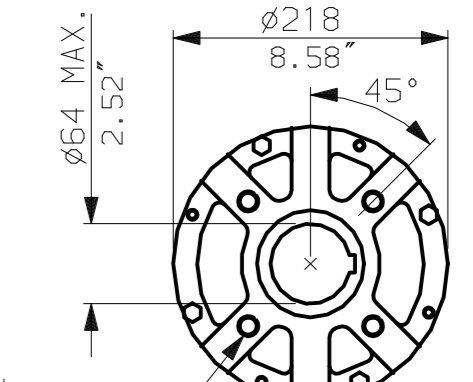
CONDUIT ENTRIES (N.T.S)



Nos.1 & 3 TAPPED 1" NPT
No.2 TAPPED 1 1/2" NPT
STD ALTERNATIVES IF SPECIFIED
2 X M25, 1 X M40
2 X PG16, 1 X PG29



N.B. KEYWAY POS. CAN BE MOVED 90 OR 180° BY REMOVING 8 SCREWS MARKED (A) AND ROTATING OUTPUT SLEEVE.



"F" version
4 HOLES TAPPED M16 x 16 DP
EQUI-SPACED AS SHOWN ON A
140 PCD (150 5211-F14).

"FA" version
4 HOLES TAPPED 5/8" UNC x 0.63" dp
EQUI-SPACED AS SHOWN ON A
5.5" PCD (MSS SP101-FA14).

NOTE:
Gearbox is shown with LOW Ratio Input Reducer.
(ie Ratios 80, 120, 140, 160, 210, 280)
See Data Sheet with IW4Rh for HIGH ratio option.

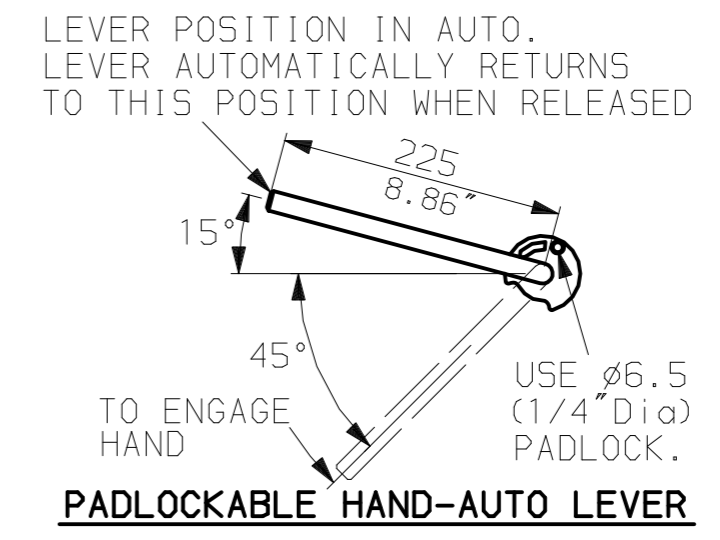
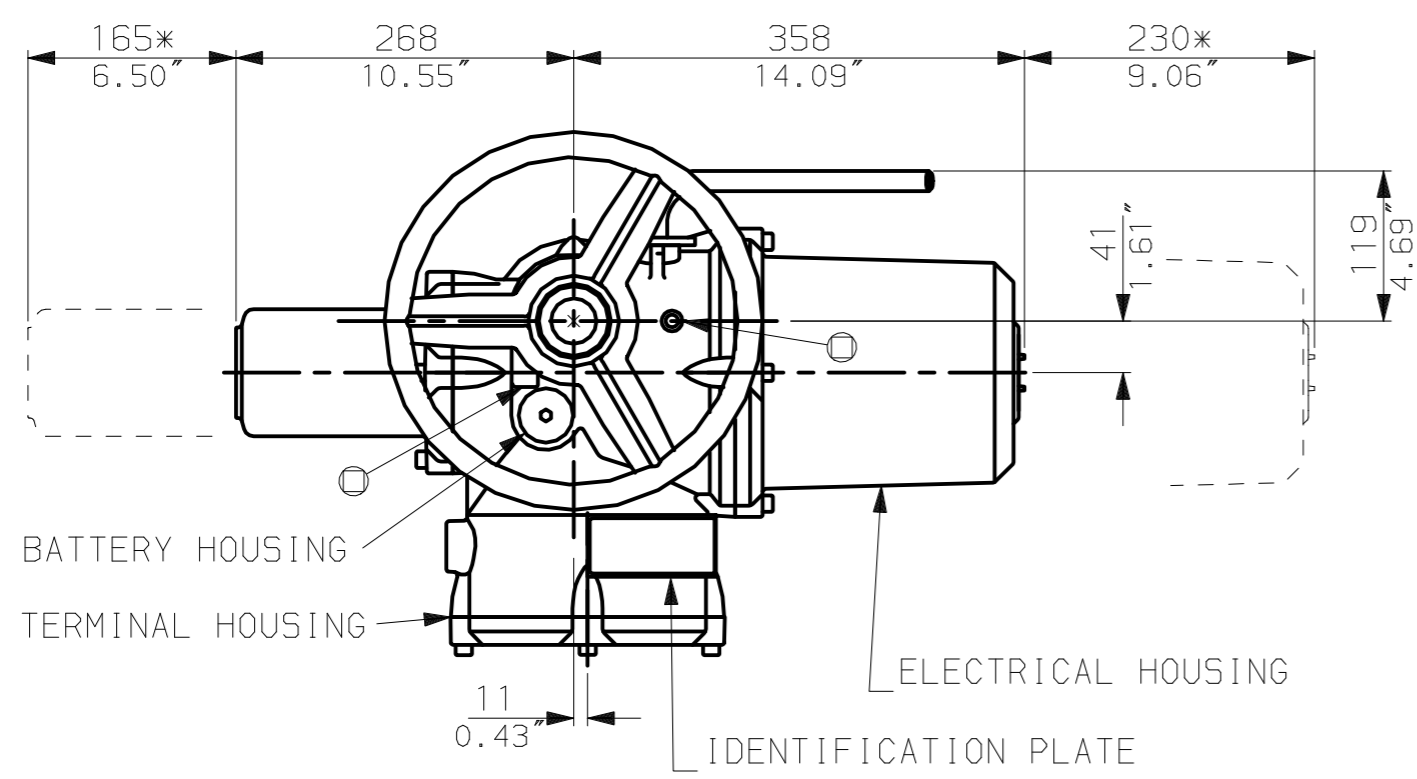
rotork
www.rotork.com

Rotork Controls Ltd.
Bath England, BA1 3JQ.
(Phone 01225-733200)

Rotork Controls Inc.
Rochester, NY 14624
(Phone 585-328-1550)

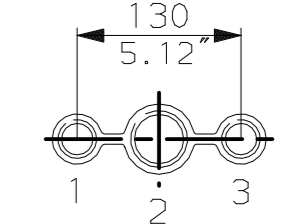
Title IQ10, 12, 18, (+IQS12), THW, IW(MOW) 4RL,	
STANDARD DIMENSIONAL DATA	
Drawn CAD	Checked PRE Ref Data Sheet
Date 150605	Job No IQ1THW_IW4RL

02	4.69" corrected from 6.50"
01	First Issue.
Scale	1:6 THIRD ANGLE PROJECTION
Drawing Number	IQ1THW_IW4RL

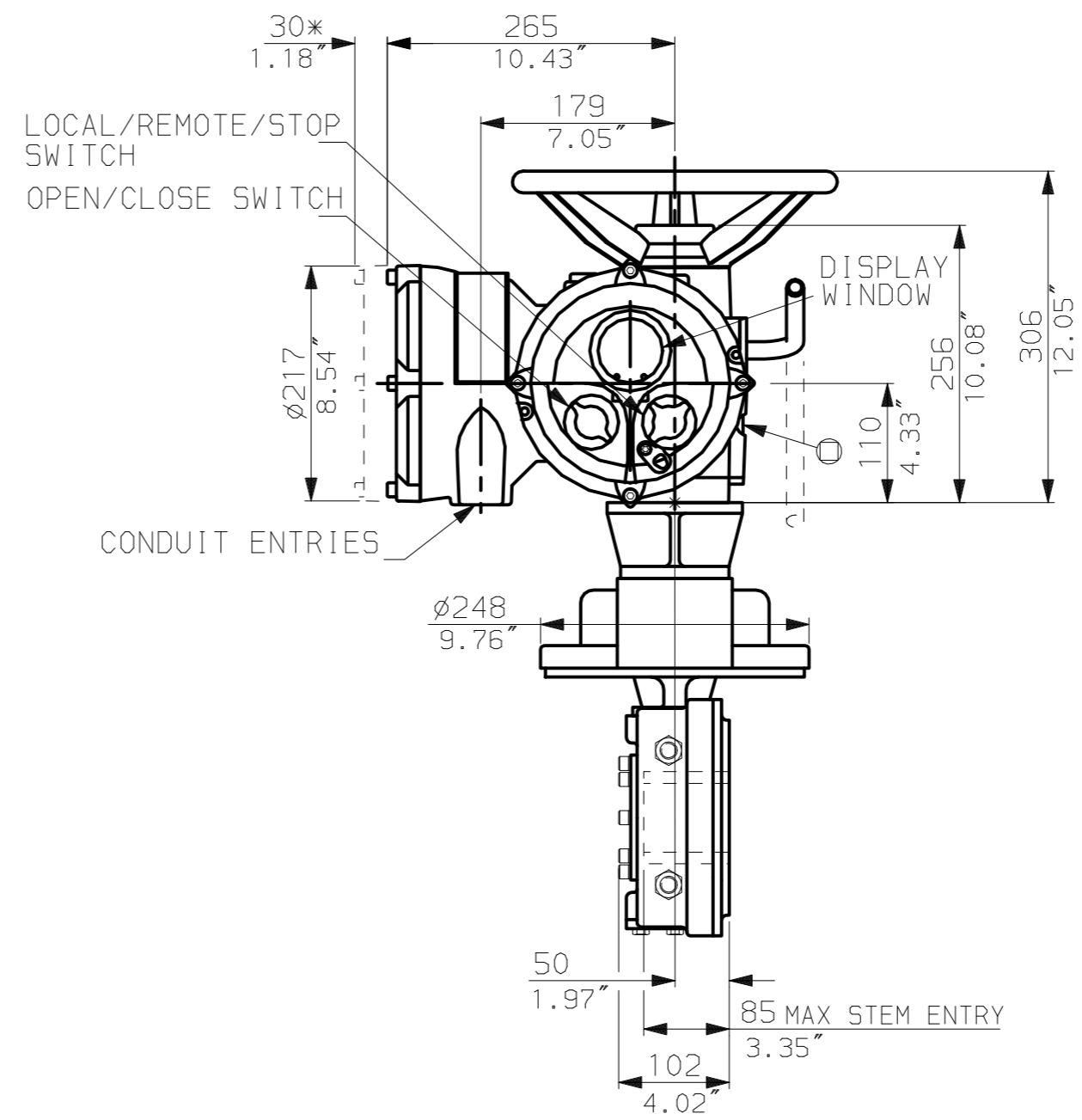
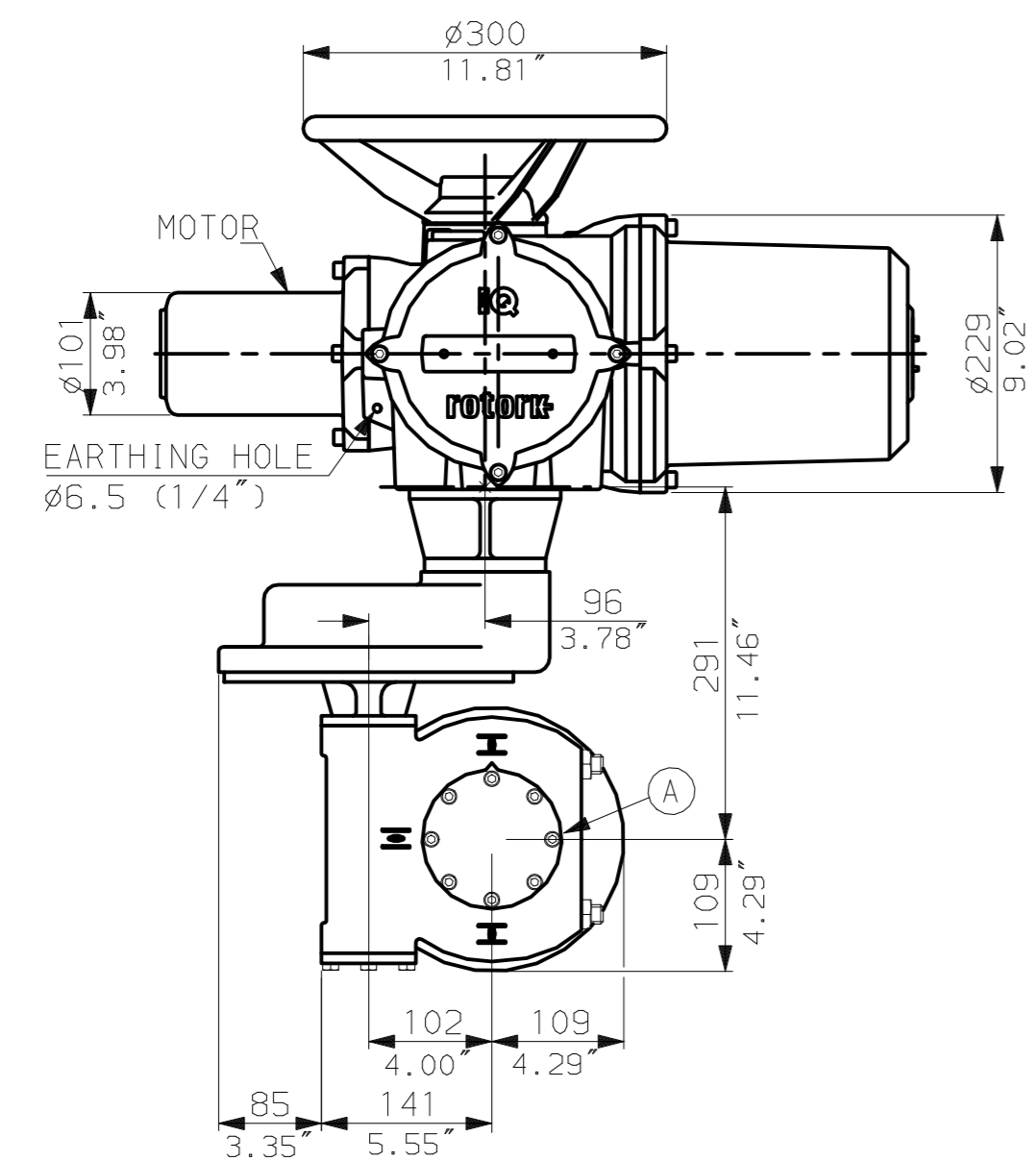


NOTES:
 :DIMENSIONS WITH '*' INDICATE COVER REMOVAL ALLOWANCE
 :NETT WEIGHT = 67kg (147lbs)
 : = OIL FILLER/DRAIN PLUG
 :THE INTERFACE PROVIDED FOR MOUNTING THE ACTUATOR OR SECOND STAGE GEARBOX ONTO THE VALVE SHOULD CONFORM TO GOOD ENGINEERING PRACTICES, ENSURING ADEQUATELY TOLERANCED LIMITS FOR PARALLELISM, PERPENDICULARITY AND CONCENTRICITY.

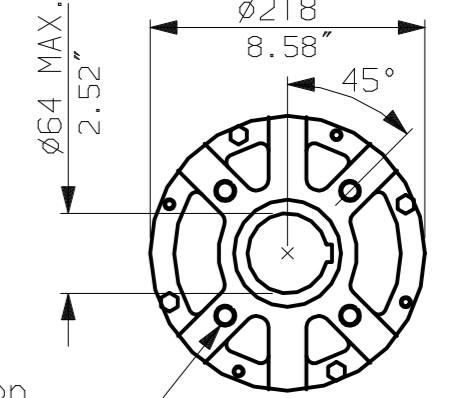
CONDUIT ENTRIES (N.T.S)



Nos.1 & 3 TAPPED 1" NPT
 No.2 TAPPED 1 1/2" NPT
 STD ALTERNATIVES IF SPECIFIED
 2 X M25, 1 X M40
 2 X PG16, 1 X PG29



N.B. KEYWAY POS. CAN BE MOVED 90 OR 180° BY REMOVING 8 SCREWS MARKED (A) AND ROTATING OUTPUT SLEEVE.



"F" version
 4 HOLES TAPPED M16 x 16 DP
 EQUI-SPACED AS SHOWN ON A
 140 PCD (ISO 5211-F14).
 "FA" version
 4 HOLES TAPPED 5/8" UNC x 0.63" dp
 EQUI-SPACED AS SHOWN ON A
 5.5" PCD (MSS SP101-FA14).

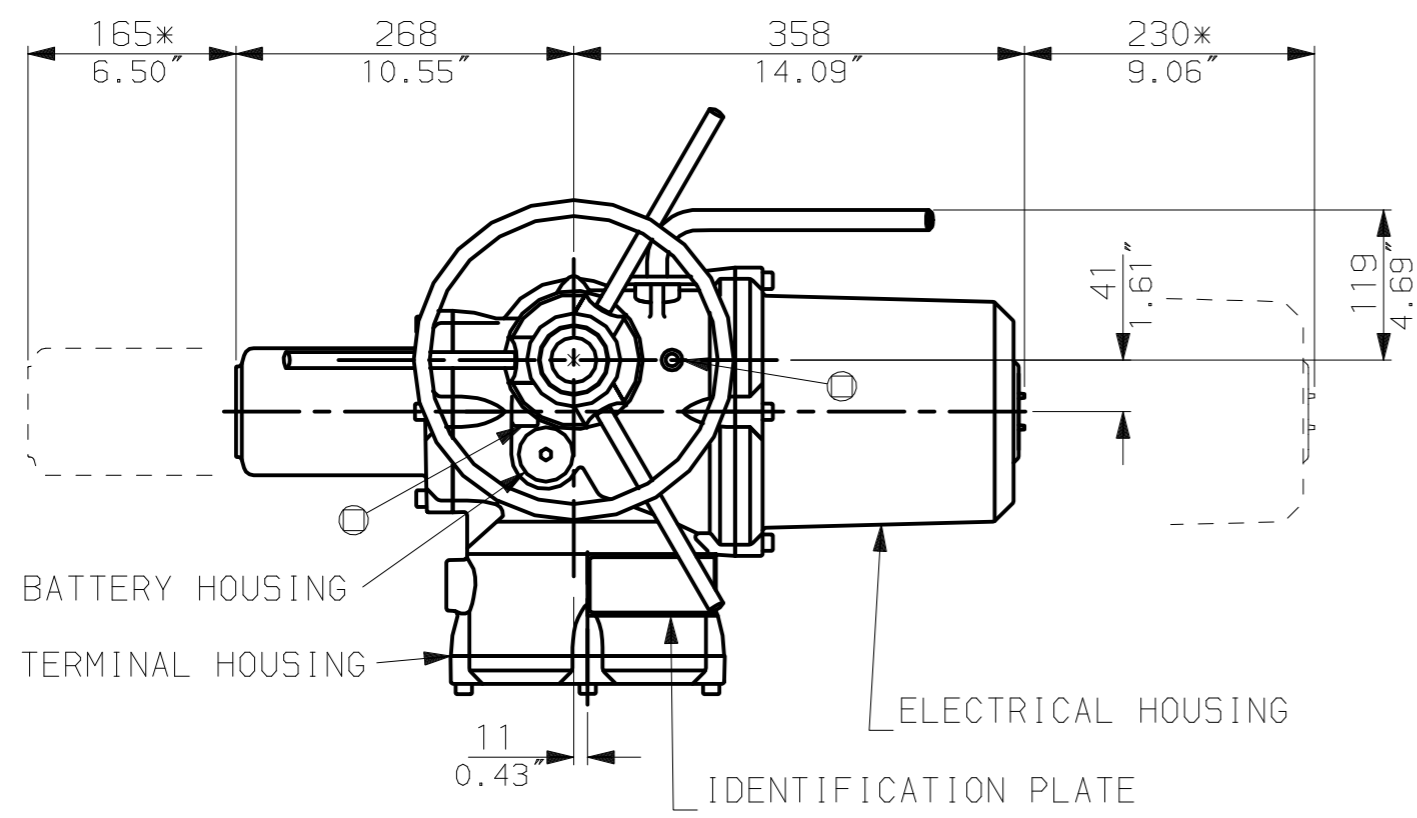


Rotork Controls Ltd.
 Bath England, BA1 3JQ.
 (Phone 01225-733200)
 Rotork Controls Inc.
 Rochester, NY 14624
 (Phone 585-328-1550)

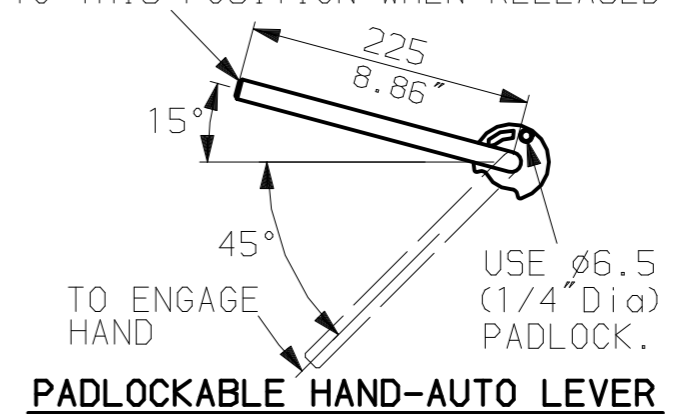
Title IQ10, 12, 18, (+IQS12), THW, IW (MOW) 4Rh,	
STANDARD DIMENSIONAL DATA	
Drawn CAD	Checked PRE Ref Data Sheet
Date 150605	Job No IQ1THW_IW4Rh

NOTE:
 Gearbox is shown with HIGH Ratio Input Reducer.
 (ie Ratios 200, 240, 350, 420)
 See Data Sheet with IW4RL for LOW ratio option.

02	4.69" corrected from 6.50"
01	First Issue.
Scale	1:6 THIRD ANGLE PROJECTION
Drawing Number	IQ1THW_IW4Rh

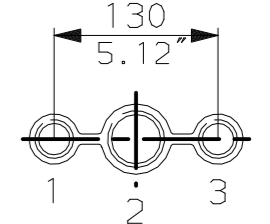


LEVER POSITION IN AUTO.
LEVER AUTOMATICALLY RETURNS
TO THIS POSITION WHEN RELEASED

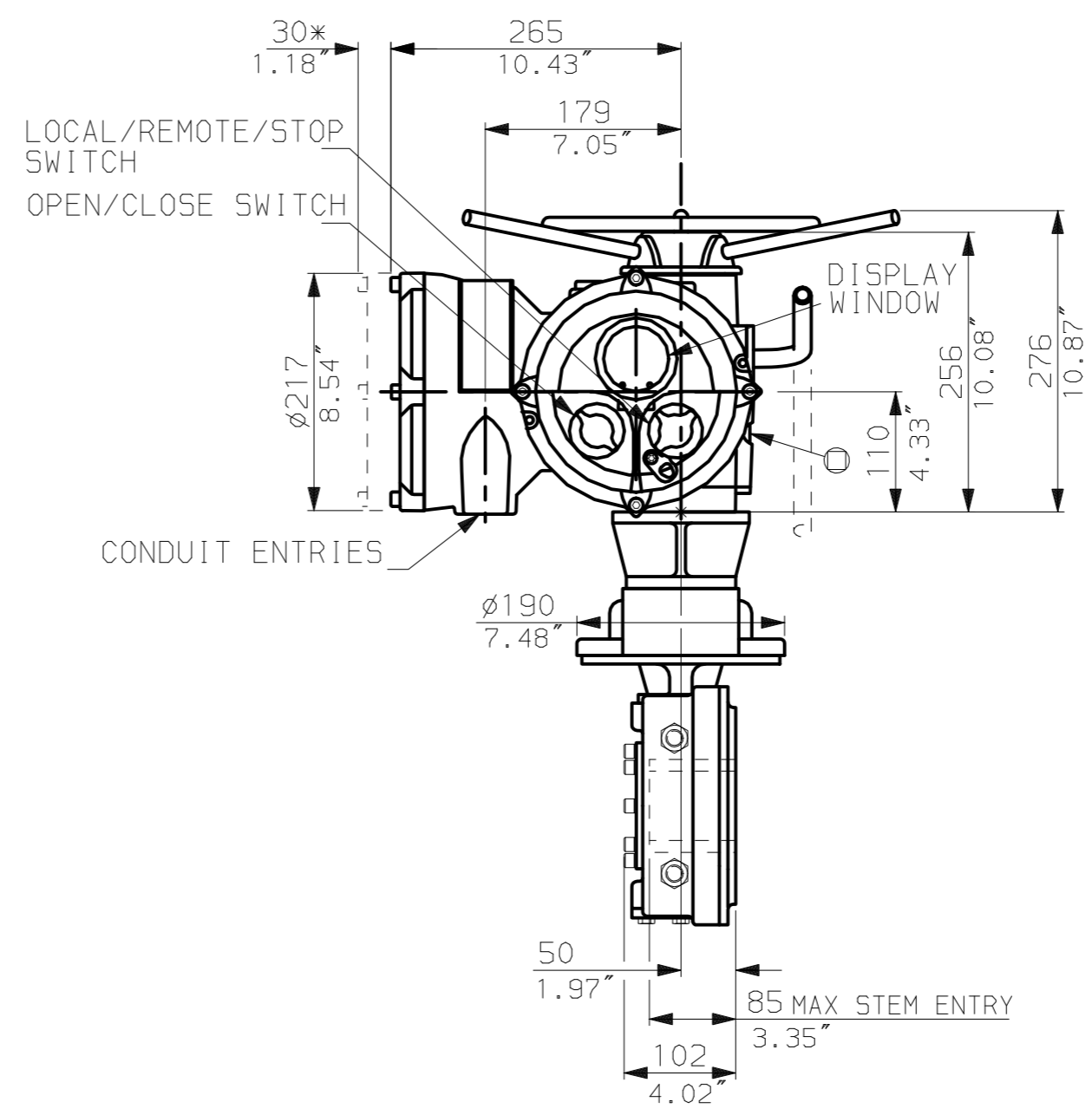
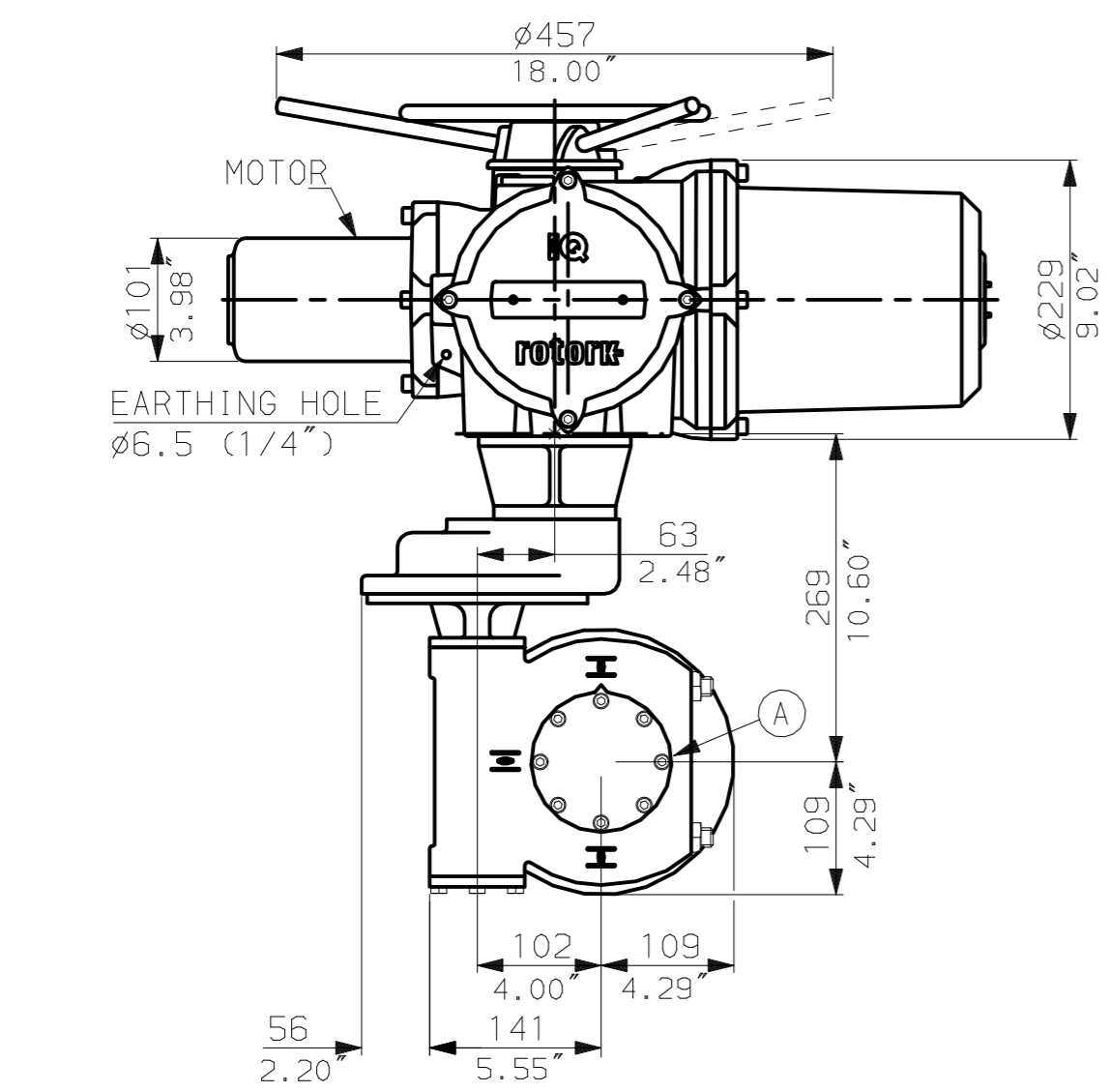


NOTES:
: DIMENSIONS WITH '*' INDICATE COVER REMOVAL ALLOWANCE
: NETT WEIGHT = 62kg (136lbs)
: = OIL FILLER/DRAIN PLUG
: THE INTERFACE PROVIDED FOR MOUNTING THE ACTUATOR OR SECOND STAGE GEARBOX ONTO THE VALVE SHOULD CONFORM TO GOOD ENGINEERING PRACTICES, ENSURING ADEQUATELY TOLERANCED LIMITS FOR PARALLELISM, PERPENDICULARITY AND CONCENTRICITY.

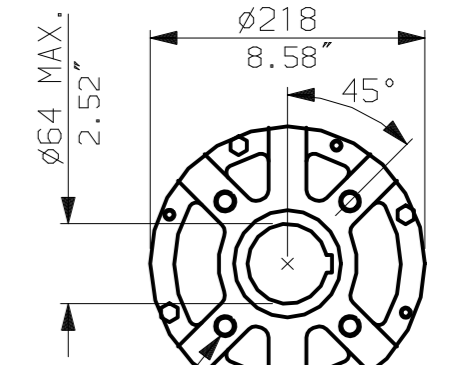
CONDUIT ENTRIES (N.T.S)



Nos.1 & 3 TAPPED 1" NPT
No.2 TAPPED 1 1/2" NPT
STD ALTERNATIVES IF SPECIFIED
2 X M25, 1 X M40
2 X PG16, 1 X PG29



N.B. KEYWAY POS. CAN BE MOVED 90 OR 180° BY REMOVING 8 SCREWS MARKED (A) AND ROTATING OUTPUT SLEEVE.



"F" version
4 HOLES TAPPED M16 x 16 DP
EQUI-SPACED AS SHOWN ON A
140 PCD (ISO 5211-F14).

"FA" version
4 HOLES TAPPED 5/8" UNC x 0.63" dp
EQUI-SPACED AS SHOWN ON A
5.5" PCD (MSS SP101-FA14).

NOTE:
Gearbox is shown with LOW Ratio Input Reducer.
(ie Ratios 80, 120, 140, 160, 210, 280)
See Data Sheet with IW4Rh for HIGH ratio option.

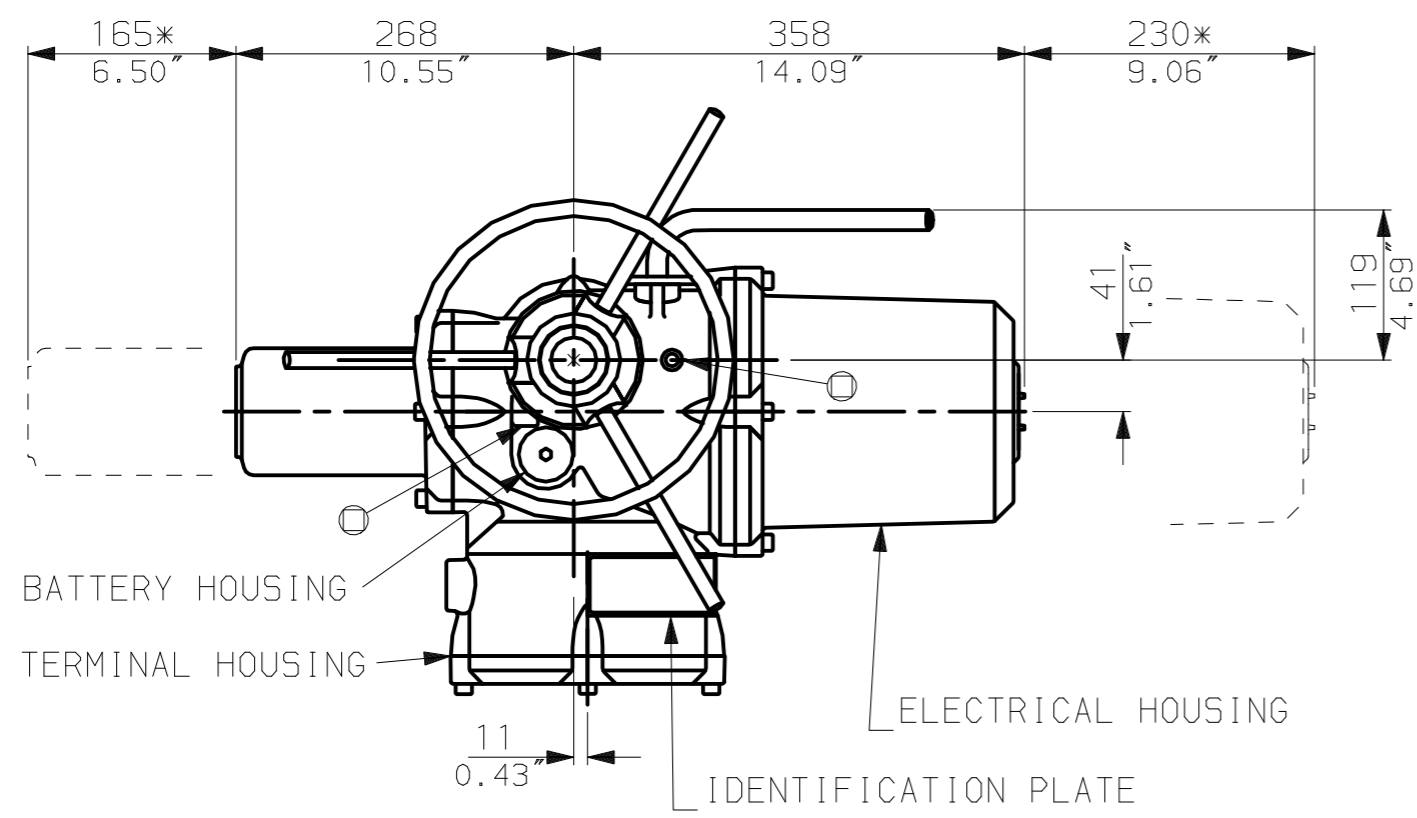
rotork
www.rotork.com

Rotork Controls Ltd.
Bath England, BA1 3JQ.
(Phone 01225-733200)

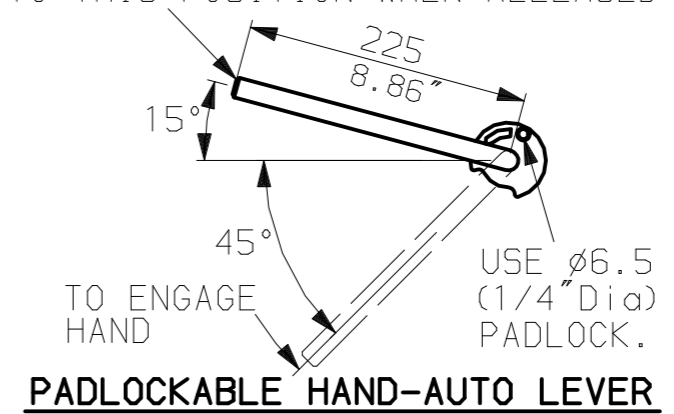
Rotork Controls Inc.
Rochester, NY 14624
(Phone 585-328-1550)

Title IQ10, 12, 18, (+IQS12), LTHW, IW (MOW) 4RL,	
STANDARD DIMENSIONAL DATA	
Drawn CAD	Checked PRE Ref Data Sheet
Date 150605	Job No IQ1LTHW_IW4RU

02	4.69" corrected from 6.50"
01	First Issue.
Scale	1:6 THIRD ANGLE PROJECTION
Drawing Number	IQ1LTHW_IW4RL

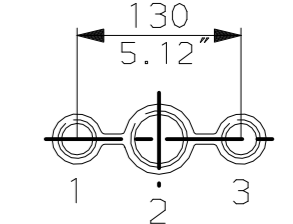


LEVER POSITION IN AUTO.
LEVER AUTOMATICALLY RETURNS
TO THIS POSITION WHEN RELEASED

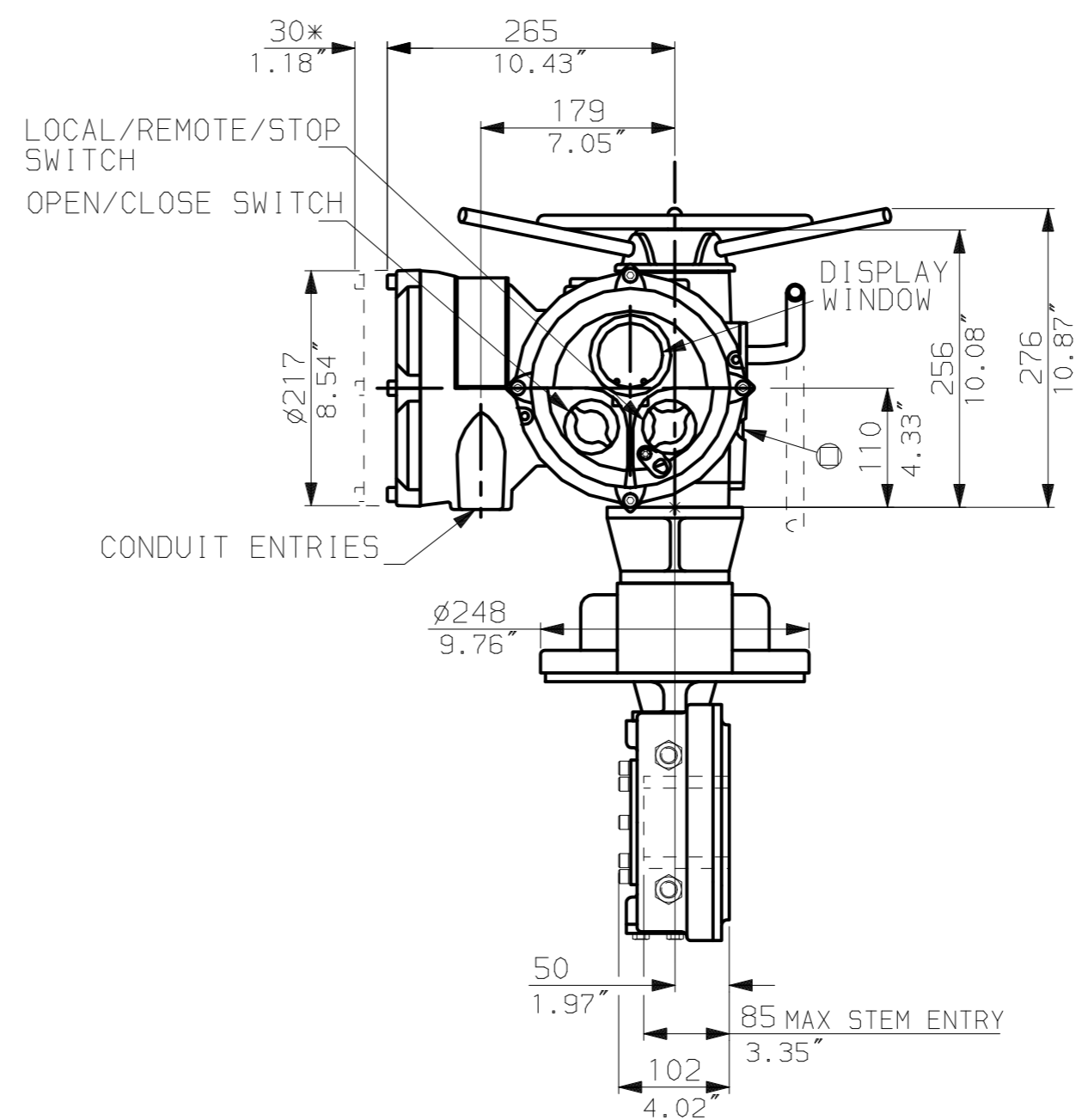
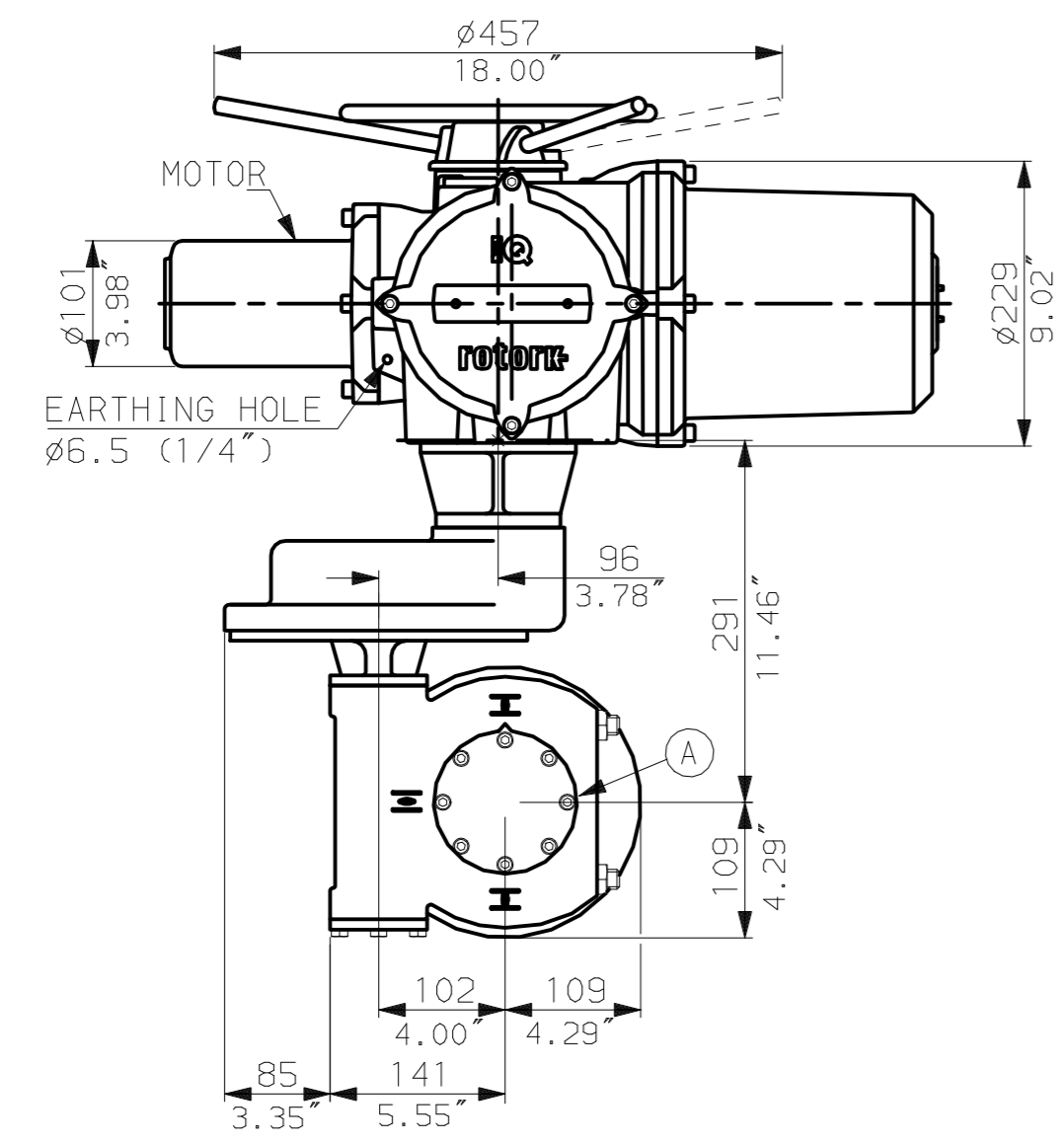


NOTES:
: DIMENSIONS WITH '*' INDICATE COVER REMOVAL ALLOWANCE
: NETT WEIGHT = 67kg (147lbs)
: \odot = OIL FILLER/DRAIN PLUG
: THE INTERFACE PROVIDED FOR MOUNTING THE ACTUATOR OR SECOND STAGE GEARBOX ONTO THE VALVE SHOULD CONFORM TO GOOD ENGINEERING PRACTICES, ENSURING ADEQUATELY TOLERANCED LIMITS FOR PARALLELISM, PERPENDICULARITY AND CONCENTRICITY.

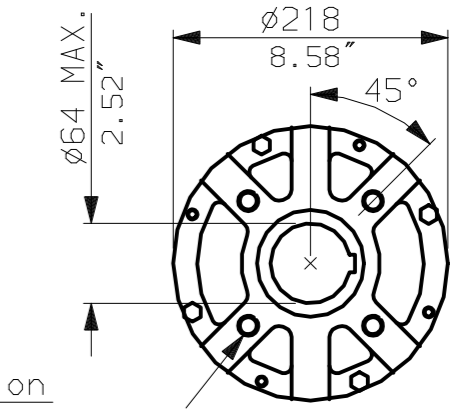
CONDUIT ENTRIES (N.T.S)



Nos.1 & 3 TAPPED 1" NPT
No.2 TAPPED 1 1/2" NPT
STD ALTERNATIVES IF SPECIFIED
2 X M25, 1 X M40
2 X PG16, 1 X PG29



N.B. KEYWAY POS. CAN BE MOVED 90 OR 180° BY REMOVING 8 SCREWS MARKED (A) AND ROTATING OUTPUT SLEEVE.



"F" version
4 HOLES TAPPED M16 x 16 DP
EQUI-SPACED AS SHOWN ON A
140 PCD (ISO 5211-F14).

"FA" version
4 HOLES TAPPED 5/8" UNC x 0.63" dp
EQUI-SPACED AS SHOWN ON A
5.5" PCD (MSS SP101-FA14).

NOTE:
Gearbox is shown with HIGH Ratio Input Reducer.
(ie Ratios 200, 240, 350, 420)
See Data Sheet with IW4RL for LOW ratio option.

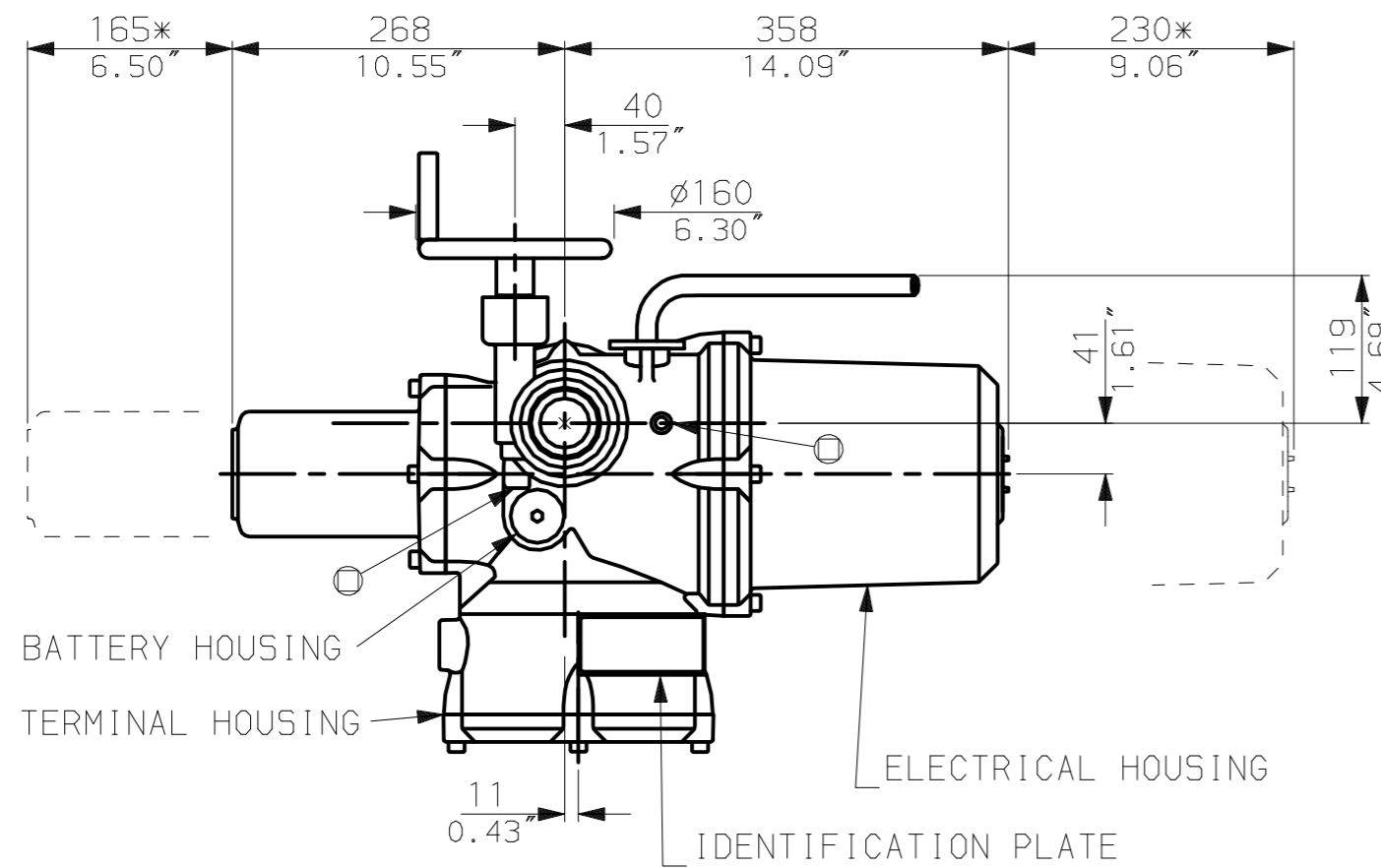


Rotork Controls Ltd.
Bath England, BA1 3JQ.
(Phone 01225-733200)

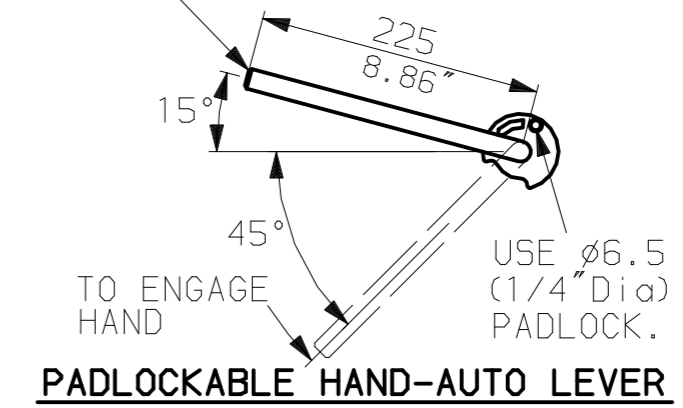
Rotork Controls Inc.
Rochester, NY 14624
(Phone 585-328-1550)


Title IQ10, 12, 18, (+IQS12), LTHW, 1W (MOW) 4Rh,	
STANDARD DIMENSIONAL DATA	
Drawn CAD	Checked PRE Ref Data Sheet
Date 150605	Job No IQ1LTHW_IW4Rh

02	4.69" corrected from 6.50"
01 Issue	First Issue.
Scale	1:6 THIRD ANGLE PROJECTION
Drawing Number	IQ1LTHW_IW4Rh

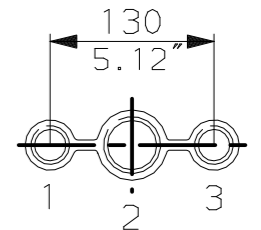


LEVER POSITION IN AUTO.
LEVER AUTOMATICALLY RETURNS
TO THIS POSITION WHEN RELEASED

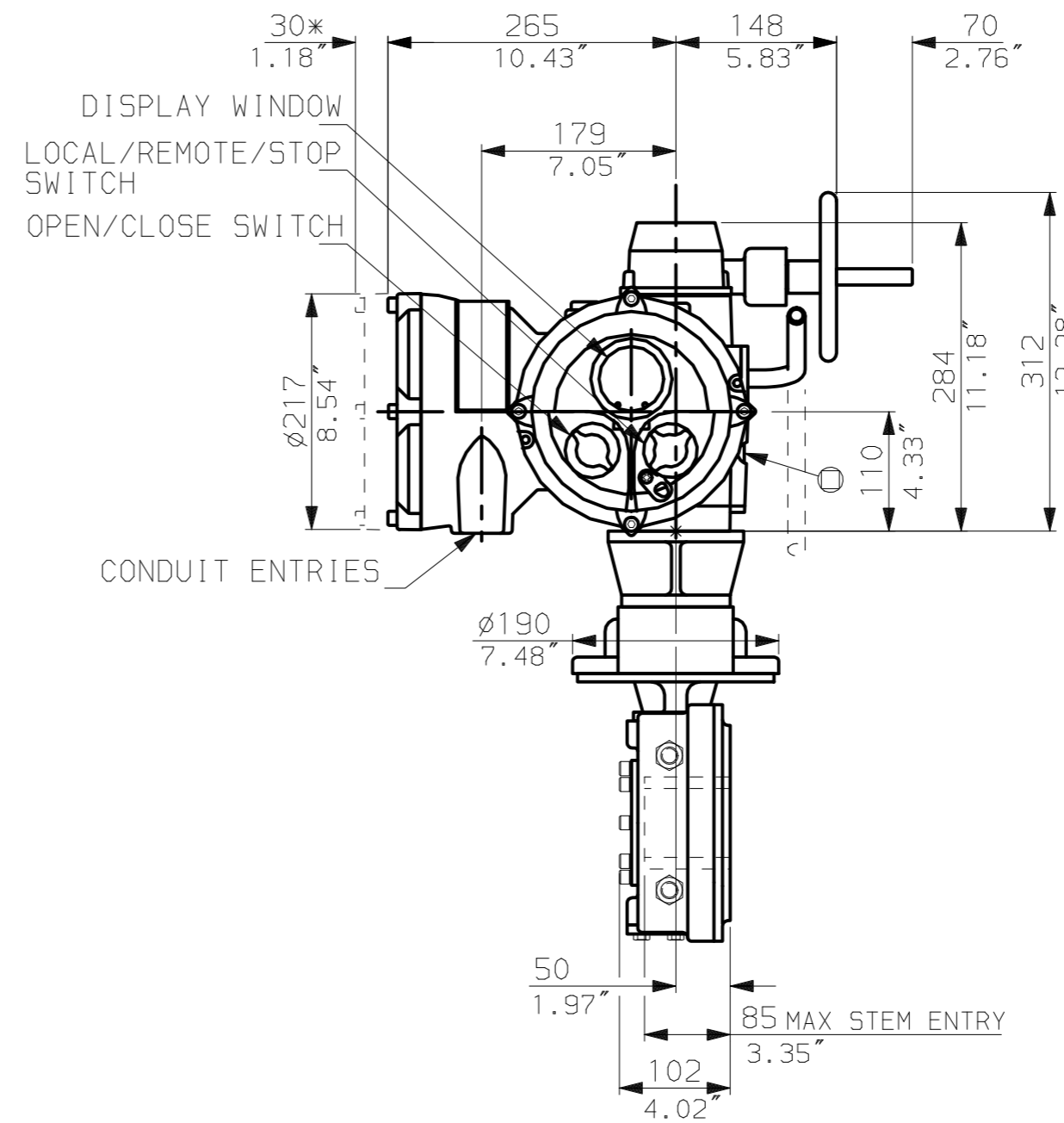
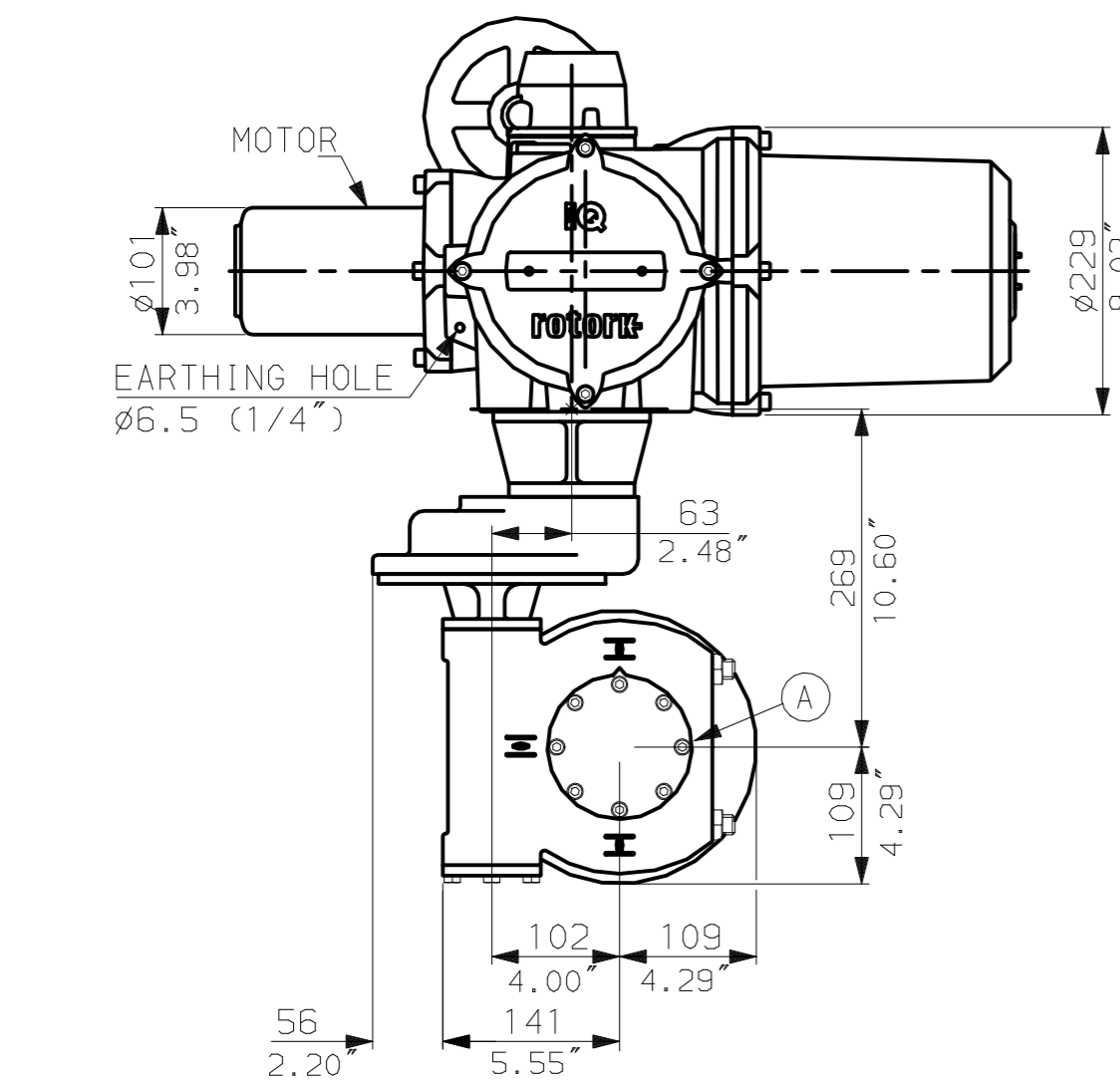


NOTES:
: DIMENSIONS WITH '*' INDICATE COVER REMOVAL ALLOWANCE
: NETT WEIGHT = 62kg (136lbs)
:  = OIL FILLER/DRAIN PLUG
: THE INTERFACE PROVIDED FOR MOUNTING THE ACTUATOR OR SECOND STAGE GEARBOX ONTO THE VALVE SHOULD CONFORM TO GOOD ENGINEERING PRACTICES, ENSURING ADEQUATELY TOLERANCED LIMITS FOR PARALLELISM, PERPENDICULARITY AND CONCENTRICITY.

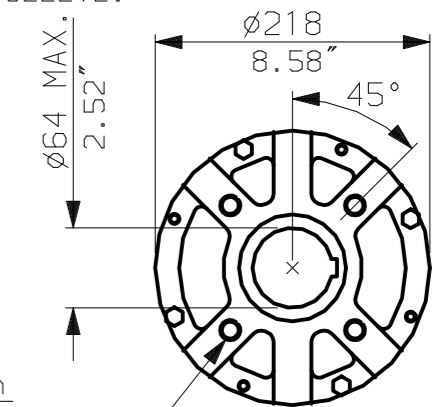
CONDUIT ENTRIES (N.T.S.)



Nos.1 & 3 TAPPED 1" NPT
No.2 TAPPED 1 1/2" NPT
STD ALTERNATIVES IF SPECIFIED
2 X M25, 1 X M40
2 X PG16, 1 X PG29



N.B. KEYWAY POS. CAN BE MOVED 90 OR 180° BY REMOVING 8 SCREWS MARKED (A) AND ROTATING OUTPUT SLEEVE.



"F" version

4 HOLES TAPPED M16 x 16 DP
EQUI-SPACED AS SHOWN ON A
140 PCD (150 5211-F14).

"FA" version

4 HOLES TAPPED 5/8" UNC x 0.63" dp
EQUI-SPACED AS SHOWN ON A
5.5" PCD (M55 SP101-FA14).

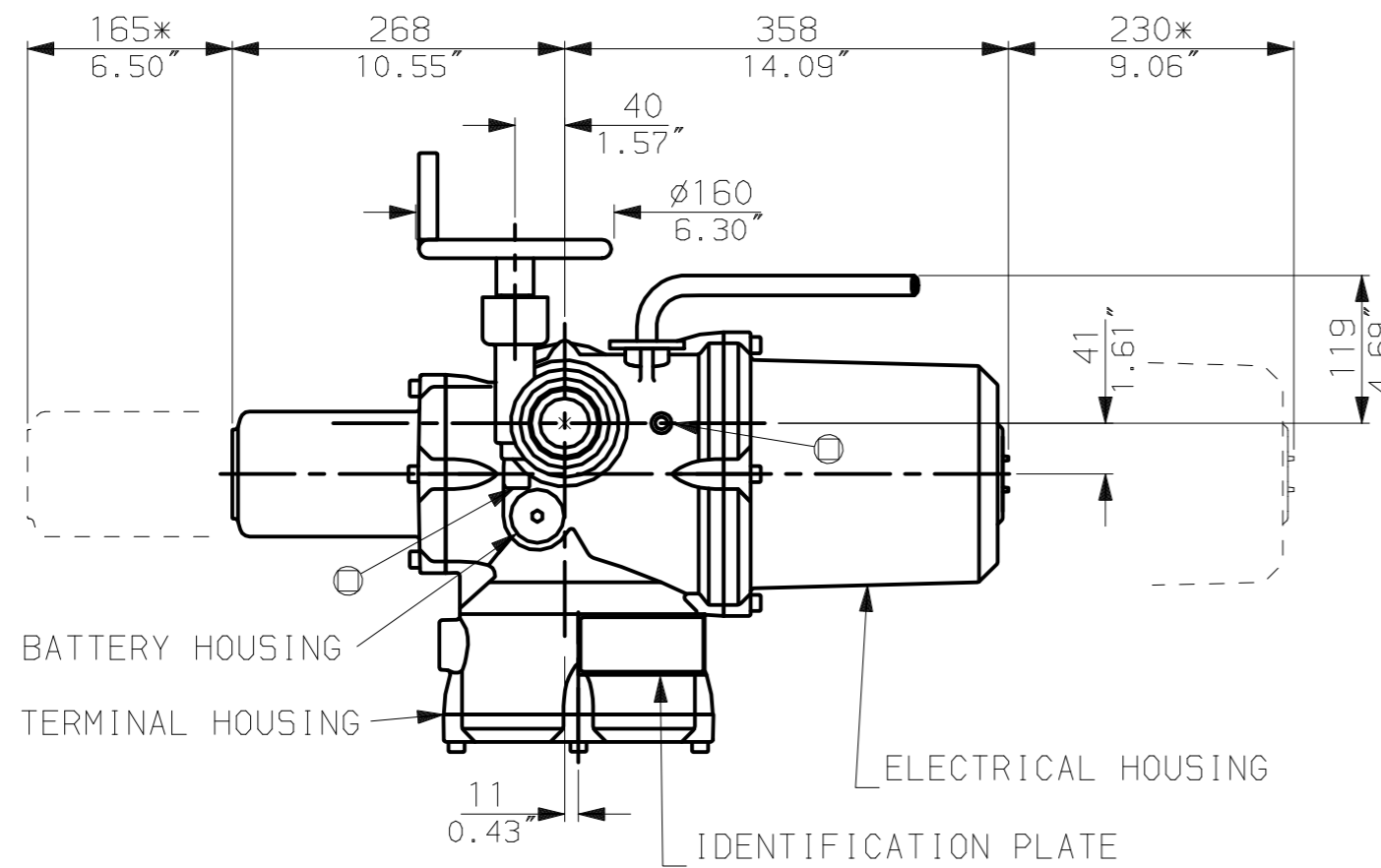
NOTE:
Gearbox is shown with LOW Ratio Input Reducer.
(ie Ratios 80, 120, 140, 160, 210, 280)
See Data Sheet with IW4Rh for HIGH ratio option.

rotork
www.rotork.com

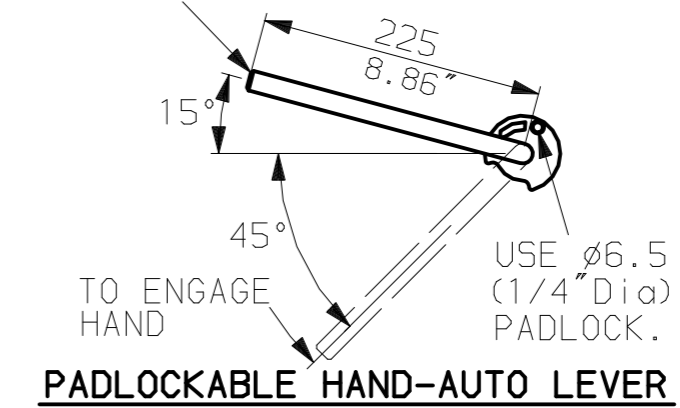
Rotork Controls Ltd.
Bath England, BA1 3JQ.
(Phone 01225-733200)
Rotork Controls Inc.
Rochester, NY 14624
(Phone 585-328-1550)

Title IQ10, 12, 18, (+IQS12), SHW, IW(MOW) 4RL,		
STANDARD DIMENSIONAL DATA		
Drawn CAD	Checked PRE	Ref Data Sheet
Date 150605	Job No	IQ1SHW_IW4RL

02	4.69" corrected from 6.50"
01	First Issue.
Scale	1:6 THIRD ANGLE PROJECTION
Drawing Number	IQ1SHW_IW4RL

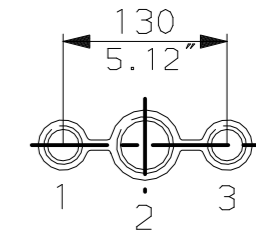


LEVER POSITION IN AUTO.
 LEVER AUTOMATICALLY RETURNS
 TO THIS POSITION WHEN RELEASED

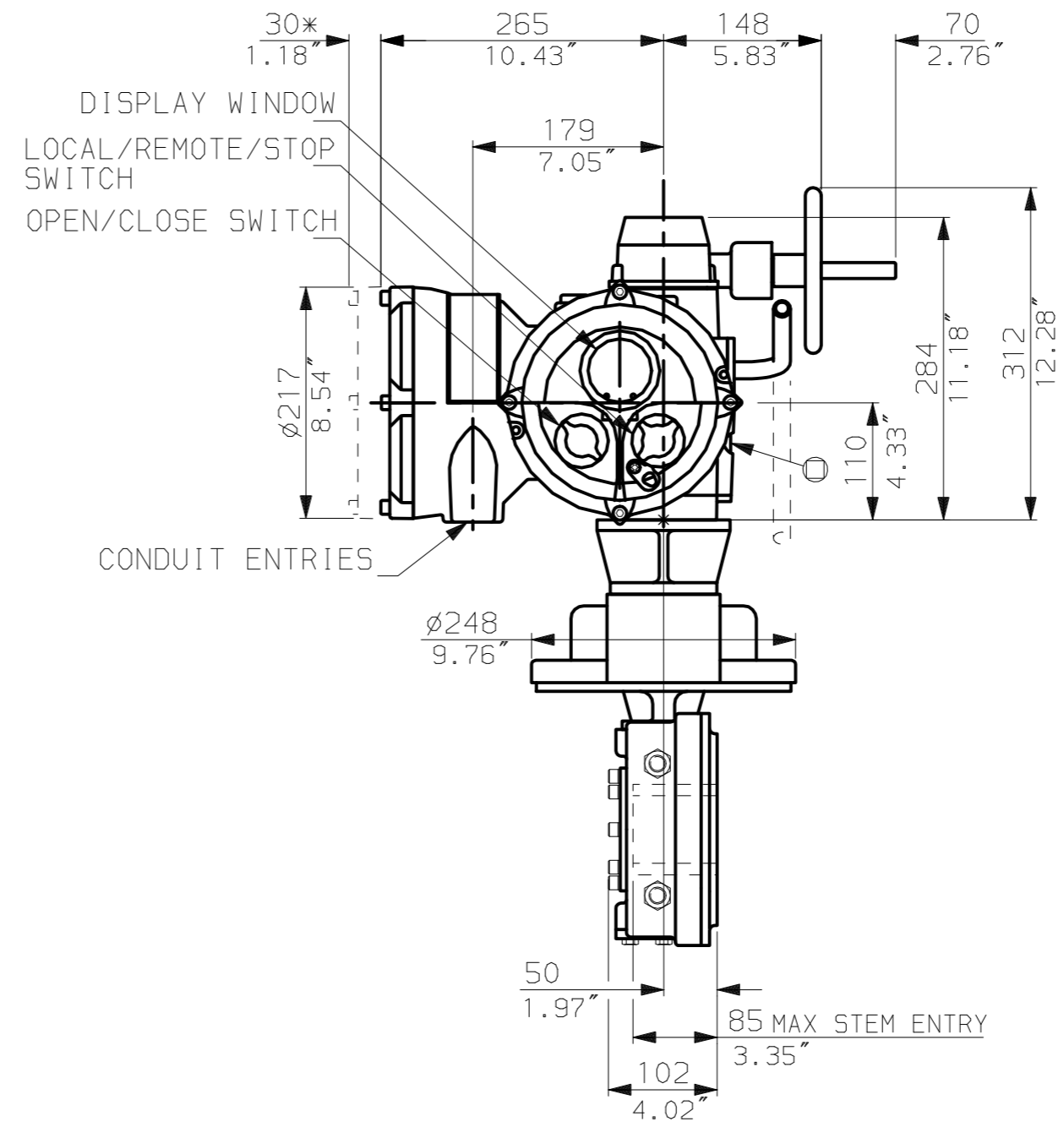
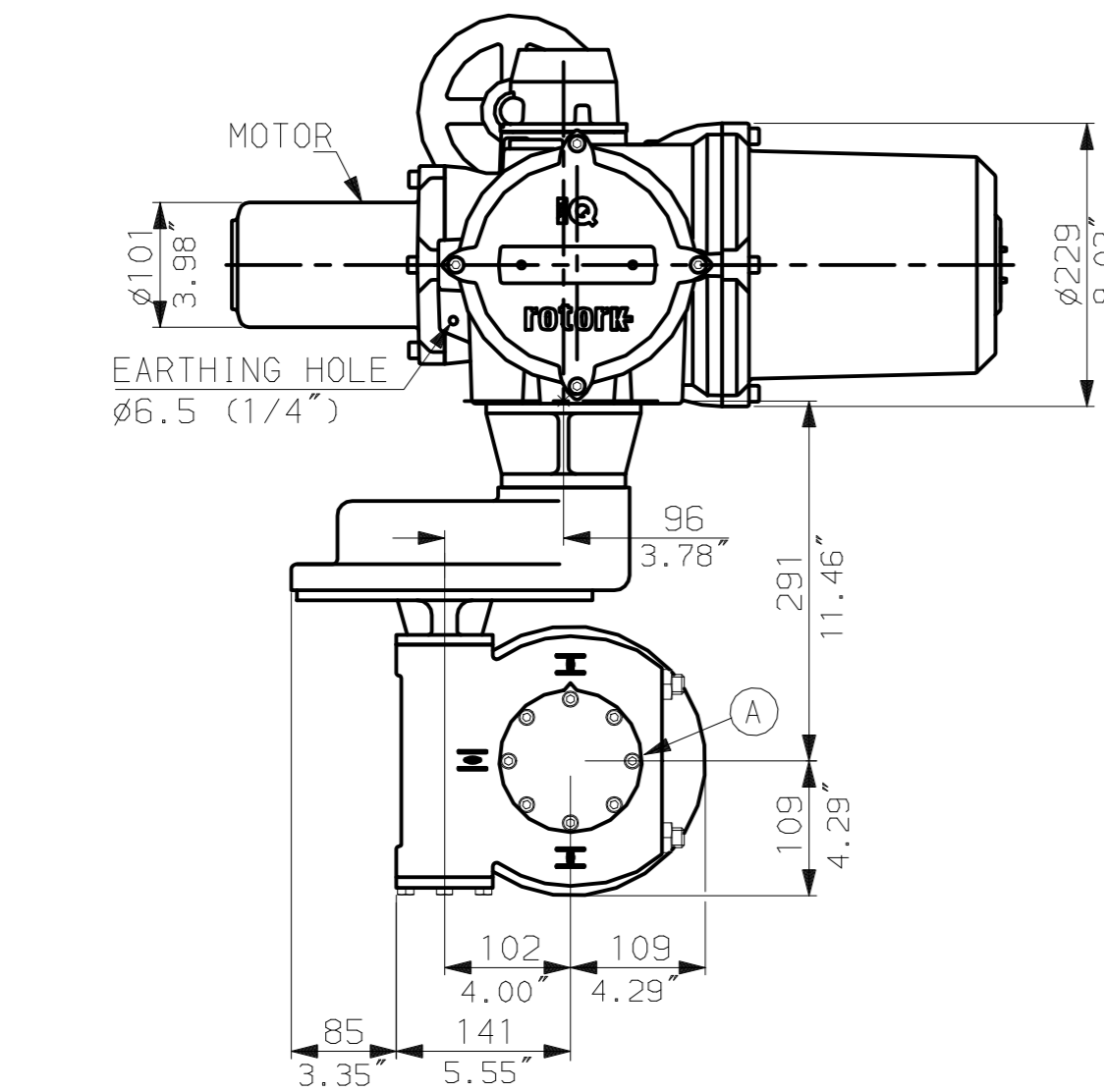


NOTES:
 : DIMENSIONS WITH '*' INDICATE COVER REMOVAL ALLOWANCE
 : NETT WEIGHT = 67kg (147lbs)
 : \odot = OIL FILLER/DRAIN PLUG
 : THE INTERFACE PROVIDED FOR MOUNTING THE ACTUATOR OR SECOND STAGE GEARBOX ONTO THE VALVE SHOULD CONFORM TO GOOD ENGINEERING PRACTICES, ENSURING ADEQUATELY TOLERANCED LIMITS FOR PARALLELISM, PERPENDICULARITY AND CONCENTRICITY.

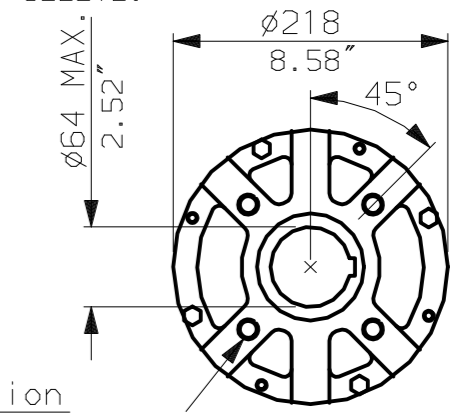
CONDUIT ENTRIES (N.T.S)



Nos.1 & 3 TAPPED 1" NPT
 No.2 TAPPED 1 1/2" NPT
 STD ALTERNATIVES IF SPECIFIED
 2 X M25, 1 X M40
 2 X PG16, 1 X PG29



N.B. KEYWAY POS. CAN BE MOVED 90 OR 180° BY REMOVING 8 SCREWS MARKED (A) AND ROTATING OUTPUT SLEEVE.



"F" version

4 HOLES TAPPED M16 x 16 DP
 EQUI-SPACED AS SHOWN ON A
 140 PCD (ISO 5211-F14).

"FA" version

4 HOLES TAPPED 5/8" UNC x 0.63" dp
 EQUI-SPACED AS SHOWN ON A
 5.5" PCD (MSS SP101-FA14).

NOTE:
 Gearbox is shown with HIGH Ratio Input Reducer.
 (ie Ratios 200, 240, 350, 420)
 See Data Sheet with IW4RL for LOW ratio option.

rotork
 www.rotork.com
 Rotork Controls Ltd.
 Bath England, BA1 3JQ.
 (Phone 01225-733200)
 Rotork Controls Inc.
 Rochester, NY 14624
 (Phone 585-328-1550)

Title IQ10, 12, 18, (+IQS12), SHW, IW (MOW) 4Rh,			
STANDARD DIMENSIONAL DATA			
Drawn CAD	Checked PRE	Ref Data Sheet	
Date 150605	Job No	IQ1SHW_IW4Rh	

02	4.69" corrected from 6.50"
01 Issue	First Issue.
Scale	1:6 THIRD ANGLE PROJECTION
Drawing Number	IQ1SHW_IW4Rh