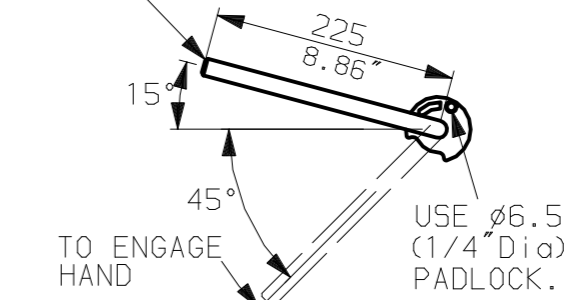


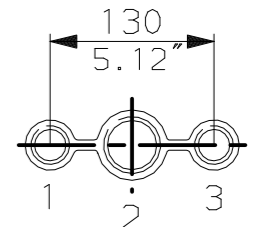
LEVER POSITION IN AUTO.
LEVER AUTOMATICALLY RETURNS
TO THIS POSITION WHEN RELEASED



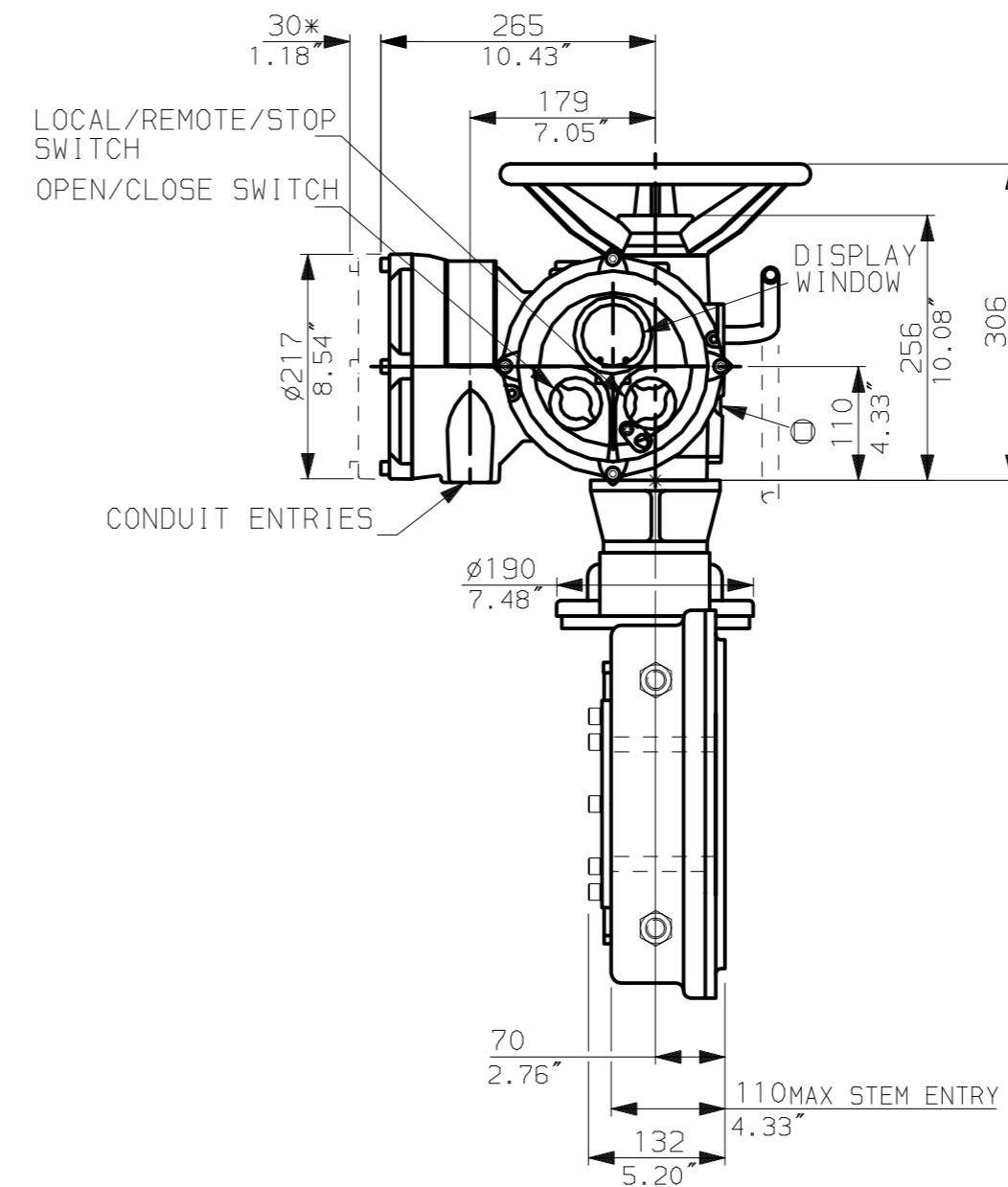
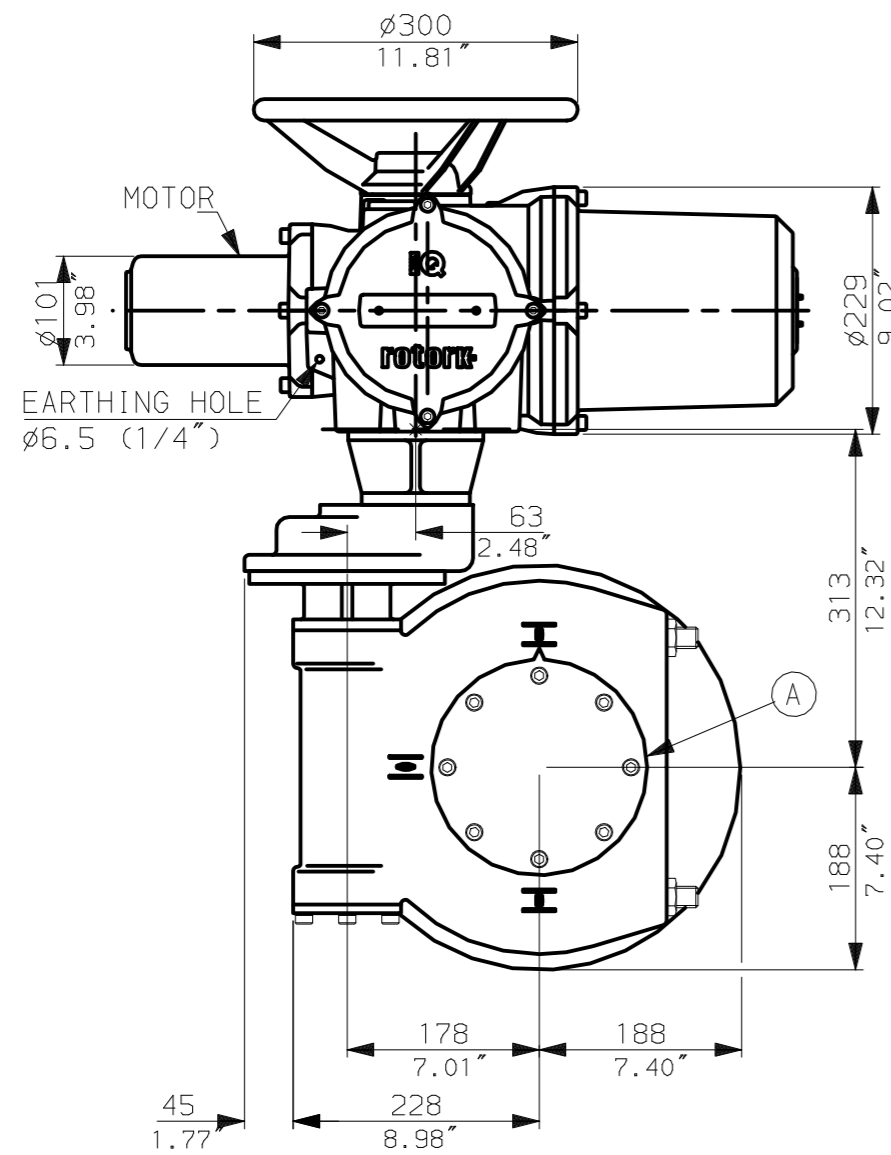
PADLOCKABLE HAND-AUTO LEVER

NOTES:
:DIMENSIONS WITH '*' INDICATE
COVER REMOVAL ALLOWANCE
:NETT WEIGHT = 111kg (244lbs)
:⊙ = OIL FILLER/DRAIN PLUG
:THE INTERFACE PROVIDED FOR MOUNTING THE
ACTUATOR OR SECOND STAGE GEARBOX ONTO THE
VALVE SHOULD CONFORM TO GOOD ENGINEERING
PRACTICES, ENSURING ADEQUATELY TOLERANCED
LIMITS FOR PARALLELISM, PERPENDICULARITY
AND CONCENTRICITY.

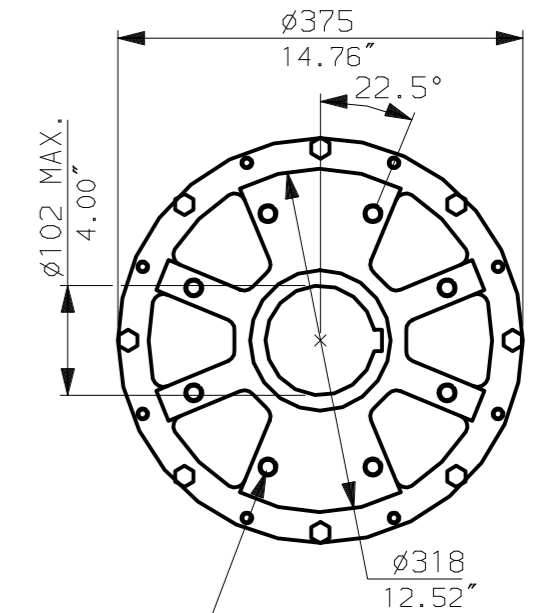
CONDUIT ENTRIES (N.T.S)



Nos.1 & 3 TAPPED 1" NPT
No.2 TAPPED 1 1/2" NPT
STD ALTERNATIVES IF SPECIFIED
2 X M25, 1 X M40
2 X PG16, 1 X PG29



N.B. KEYWAY POS. CAN BE MOVED
90 OR 180° BY REMOVING 8 SCREWS
MARKED (A) AND ROTATING OUTPUT
SLEEVE.



"F" version

8 HOLES TAPPED M16 x 16 DP
EQUI-SPACED AS SHOWN ON A
254 PCD (ISO 5211-F25).

"FA" version

8 HOLES TAPPED 5/8"UNCx0.63"dp
EQUI-SPACED AS SHOWN ON A
10" PCD (MSS SP101-FA25).

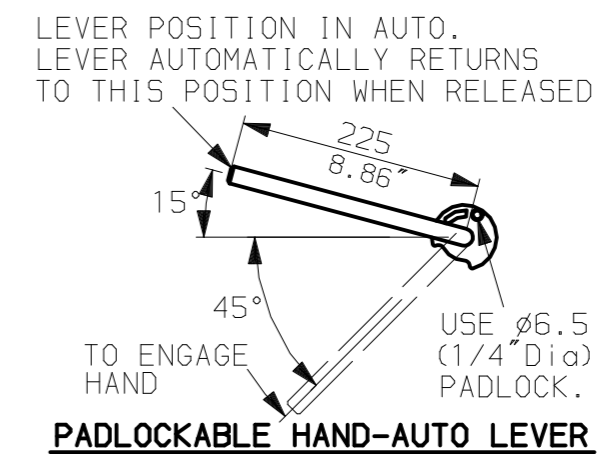
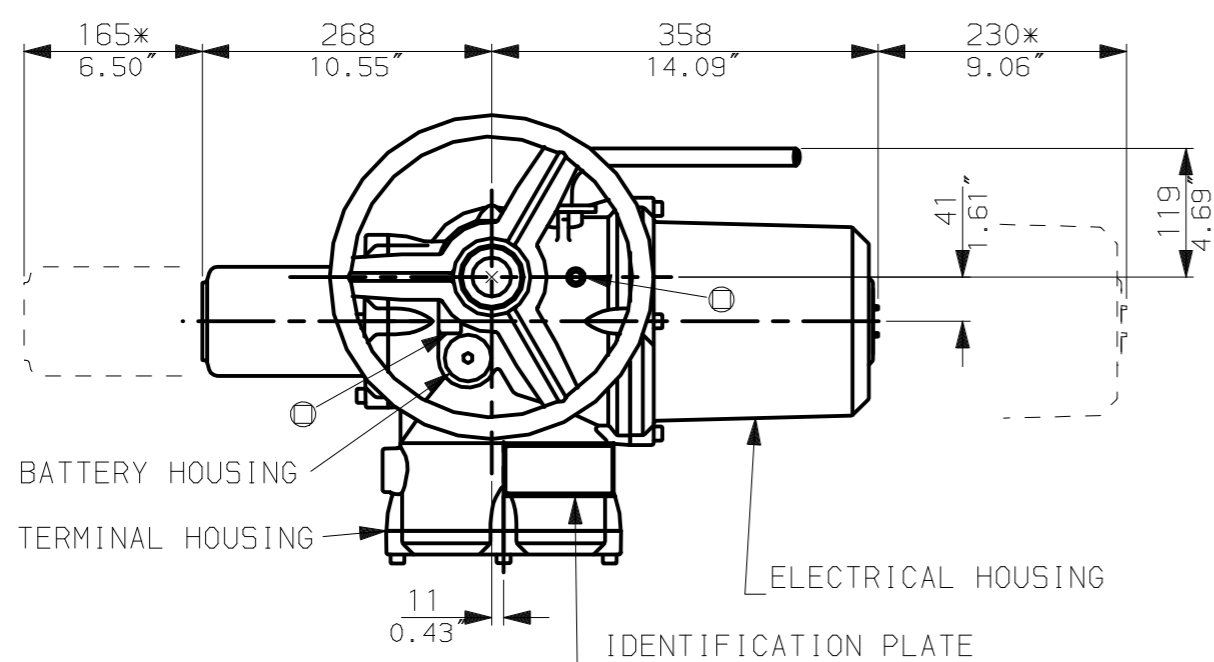
NOTE:
Gearbox is shown with LOW Ratio Input Reducer.
(ie Ratios 140,210,280)
See Data Sheet with IW6Rh for HIGH ratio option.

rotork
www.rotork.com

Rotork Controls Ltd.
Bath England, BA1 3JQ.
(Phone 01225-733200)
Rotork Controls Inc.
Rochester, NY 14624
(Phone 585-328-1550)

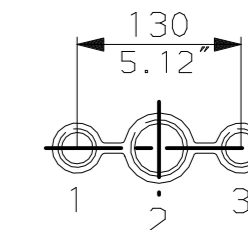
Title IQ10, 12, 18, (+IQ512), THW, IW (MOW) 6 (+63) RL,		
STANDARD DIMENSIONAL DATA		
Drawn CAD	Checked PRE	Ref Data Sheet
Date 150605	Job No IQ1THW_IW6RL	

02	4.69" corrected from 6.50"
01	First Issue.
Scale	1:7 THIRD ANGLE PROJECTION
Drawing Number	IQ1THW_IW6RL

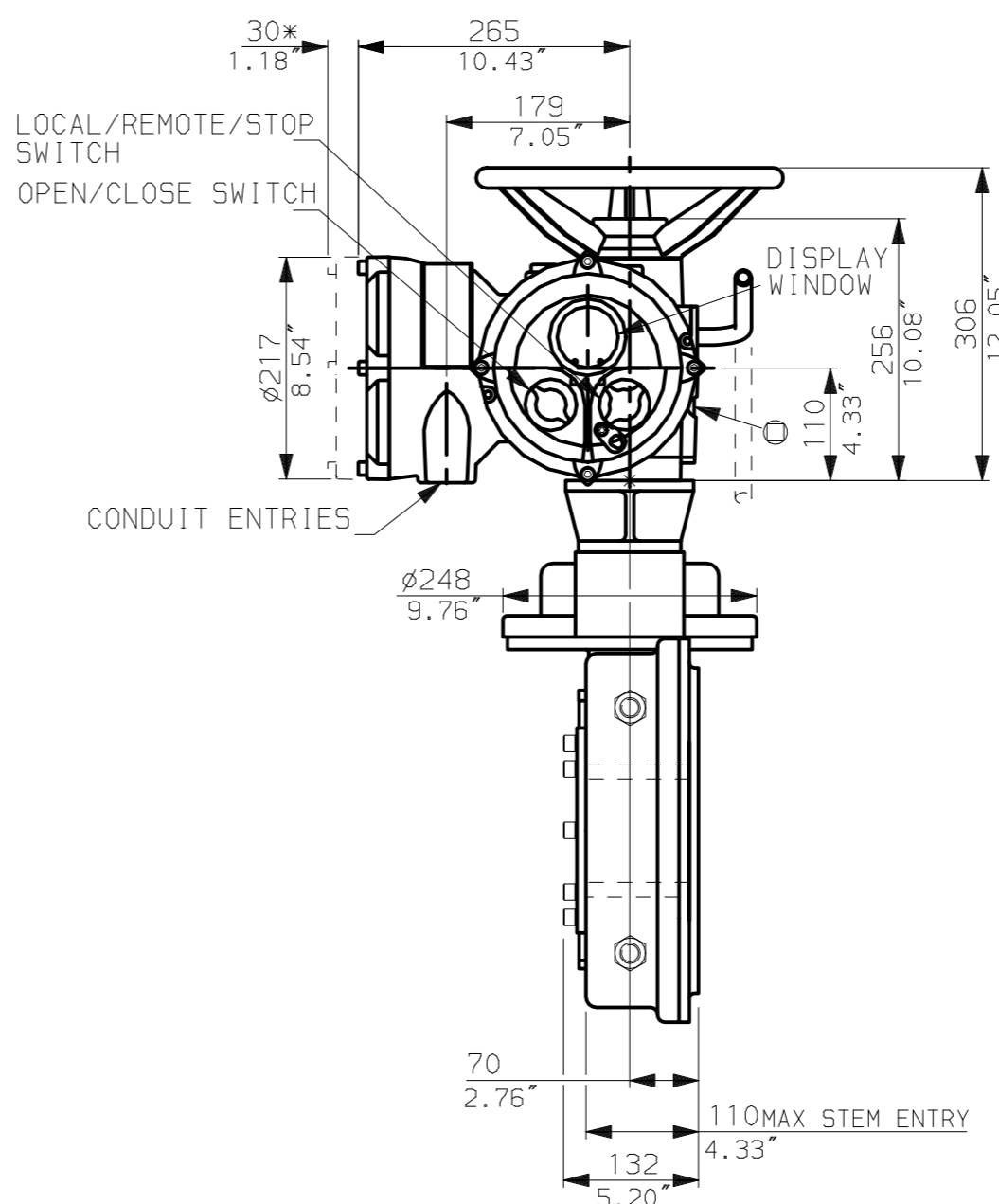
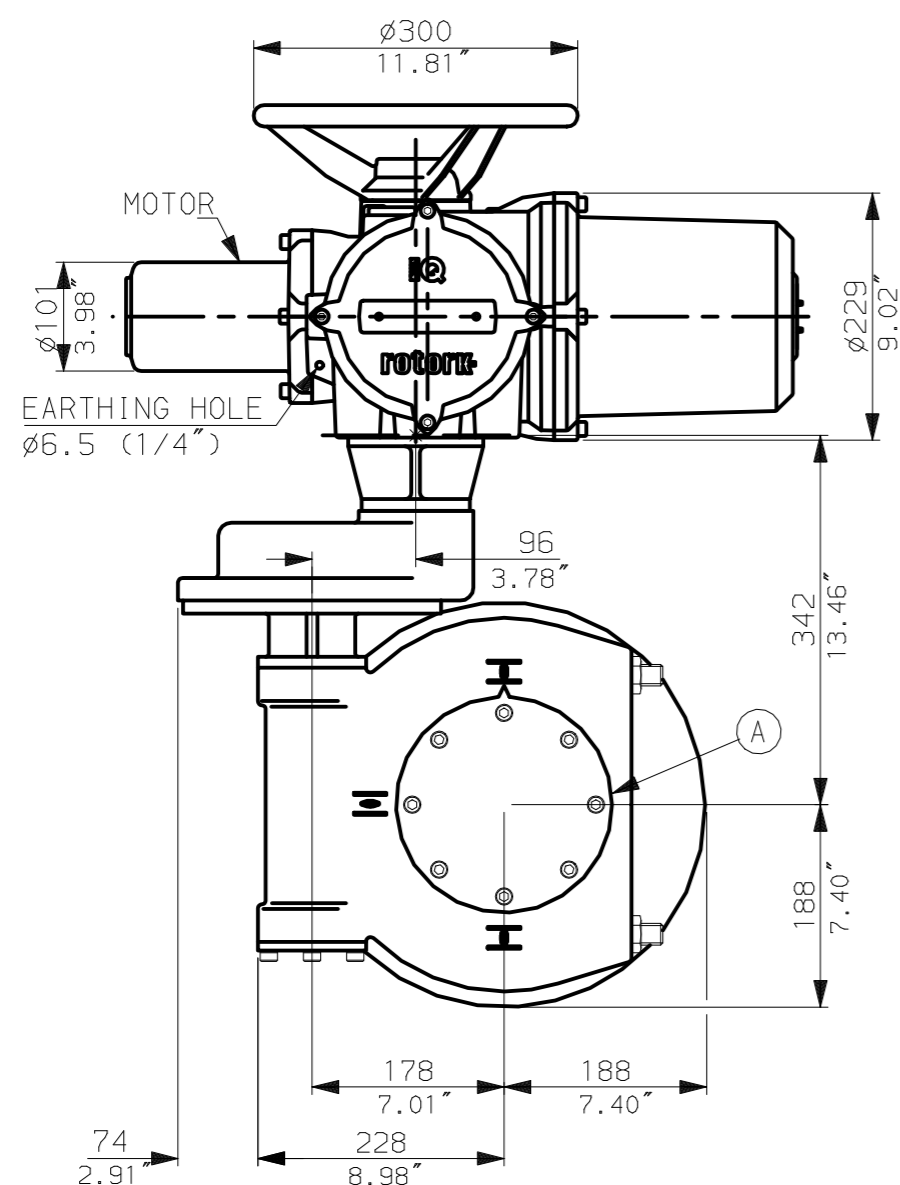


NOTES:
 :DIMENSIONS WITH '*' INDICATE COVER REMOVAL ALLOWANCE
 :NETT WEIGHT = 116kg (255lbs)
 : = OIL FILLER/DRAIN PLUG
 :THE INTERFACE PROVIDED FOR MOUNTING THE ACTUATOR OR SECOND STAGE GEARBOX ONTO THE VALVE SHOULD CONFORM TO GOOD ENGINEERING PRACTICES, ENSURING ADEQUATELY TOLERANCED LIMITS FOR PARALLELISM, PERPENDICULARITY AND CONCENTRICITY.

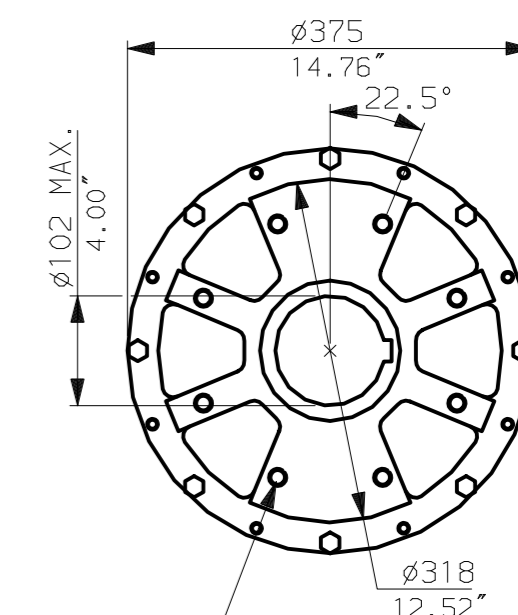
CONDUIT ENTRIES (N.T.S)



Nos.1 & 3 TAPPED 1" NPT
 No.2 TAPPED 1 1/2" NPT
 STD ALTERNATIVES IF SPECIFIED
 2 X M25, 1 X M40
 2 X PG16, 1 X PG29



N.B. KEYWAY POS. CAN BE MOVED 90 OR 180° BY REMOVING 8 SCREWS MARKED (A) AND ROTATING OUTPUT SLEEVE.



"F" version

8 HOLES TAPPED M16 x 16 DP
 EQUI-SPACED AS SHOWN ON A
 254 PCD (ISO 5211-F25).

"FA" version

8 HOLES TAPPED 5/8" UNC x 0.63" dp
 EQUI-SPACED AS SHOWN ON A
 10" PCD (MSS SP101-FA25).

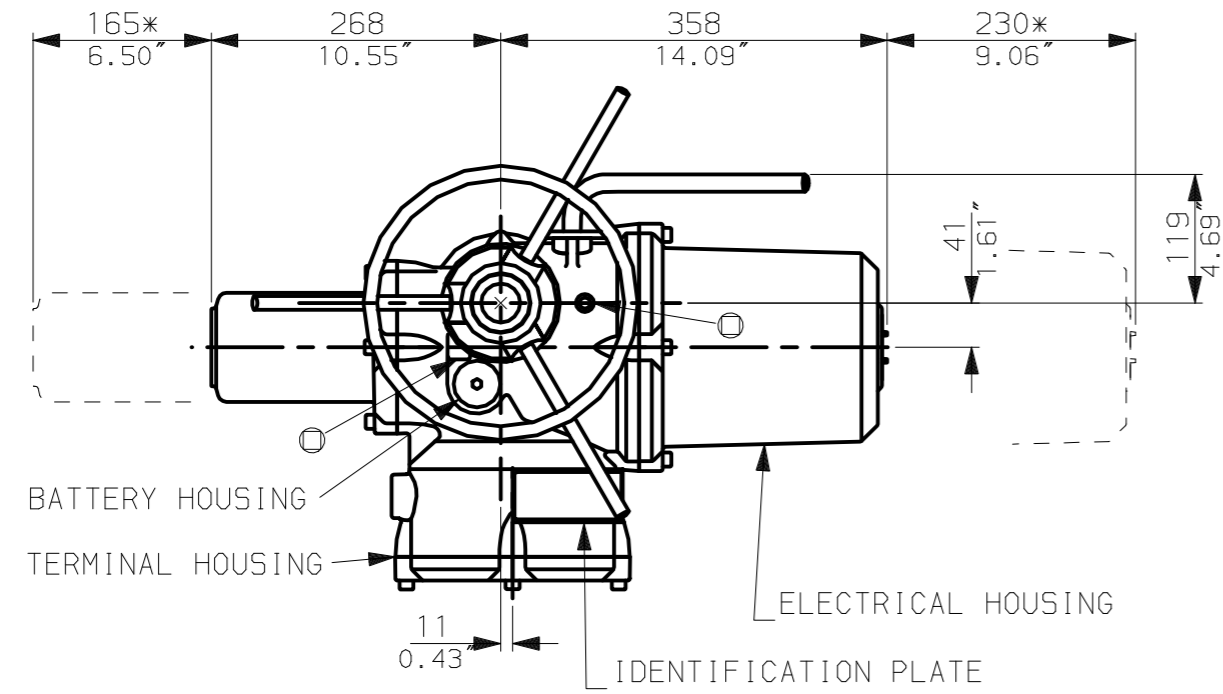
NOTE:
 Gearbox is shown with HIGH Ratio Input Reducer.
 (ie Ratios 350,420)
 See Data Sheet with IW6RL for LOW ratio option.

rotork
 www.rotork.com

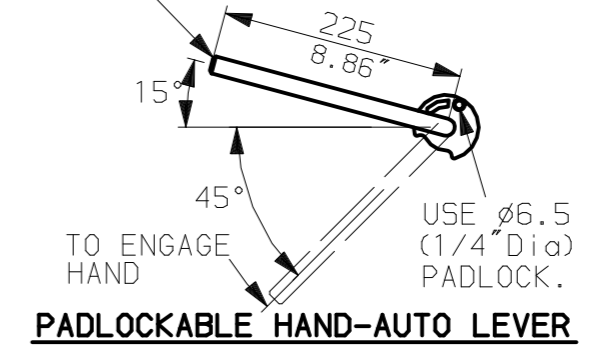
Rotork Controls Ltd.
 Bath England, BA1 3JQ.
 (Phone 01225-733200)
 Rotork Controls Inc.
 Rochester, NY 14624
 (Phone 585-328-1550)

Title IQ10, 12, 18, (+IQ512), THW, IW (MOW) 6 (+63) Rh,		
STANDARD DIMENSIONAL DATA		
Drawn CAD	Checked PRE	Ref Data Sheet
Date 150605	Job No	IQ1THW_IW6Rh

02	4.69" corrected from 6.50"
01	First Issue.
Scale	1:7 THIRD ANGLE PROJECTION
Drawing Number	IQ1THW_IW6Rh

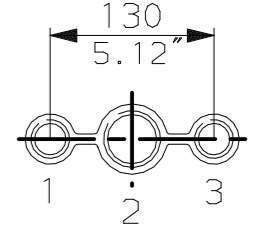


LEVER POSITION IN AUTO.
LEVER AUTOMATICALLY RETURNS
TO THIS POSITION WHEN RELEASED

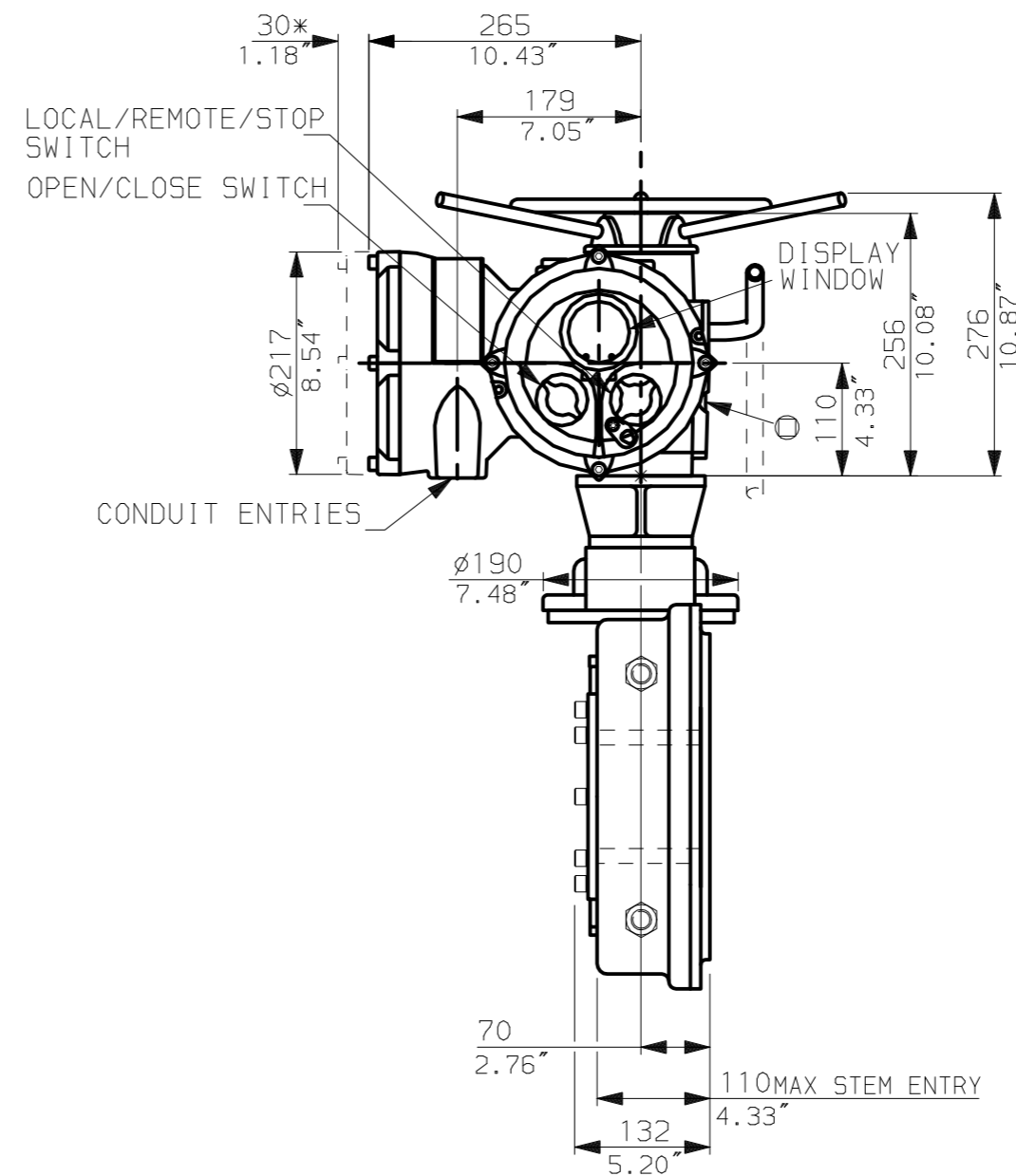
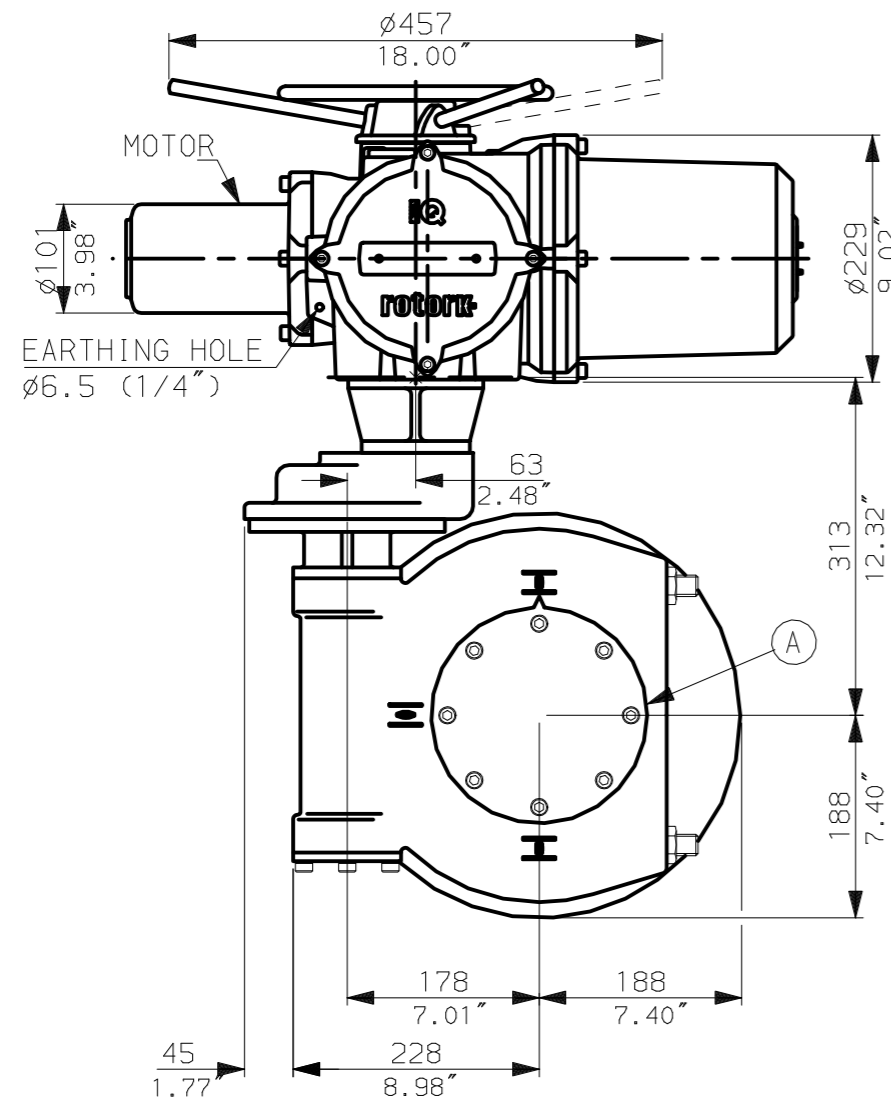


NOTES:
:DIMENSIONS WITH '*' INDICATE
COVER REMOVAL ALLOWANCE
:NETT WEIGHT = 111kg (244lbs)
:⊙ = OIL FILLER/DRAIN PLUG
:THE INTERFACE PROVIDED FOR MOUNTING THE
ACTUATOR OR SECOND STAGE GEARBOX ONTO THE
VALVE SHOULD CONFORM TO GOOD ENGINEERING
PRACTICES, ENSURING ADEQUATELY TOLERANCED
LIMITS FOR PARALLELISM, PERPENDICULARITY
AND CONCENTRICITY.

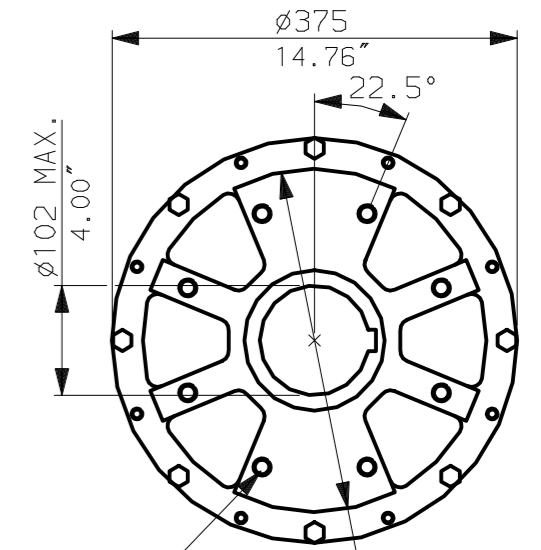
CONDUIT ENTRIES (N.T.S)



Nos.1 & 3 TAPPED 1" NPT
No.2 TAPPED 1 1/2" NPT
STD ALTERNATIVES IF SPECIFIED
2 X M25, 1 X M40
2 X PG16, 1 X PG29



N.B. KEYWAY POS. CAN BE MOVED
90 OR 180° BY REMOVING 8 SCREWS
MARKED (A) AND ROTATING OUTPUT
SLEEVE.



"F" version
8 HOLES TAPPED M16 x 16 DP
EQUI-SPACED AS SHOWN ON A
254 PCD (150 5211-F25).

"FA" version
8 HOLES TAPPED 5/8" UNC x 0.63" dp
EQUI-SPACED AS SHOWN ON A
10" PCD (MSS SP101-FA25).

NOTE:
Gearbox is shown with LOW Ratio Input Reducer.
(ie Ratios 140,210,280)
See Data Sheet with IW6Rh for HIGH ratio option.

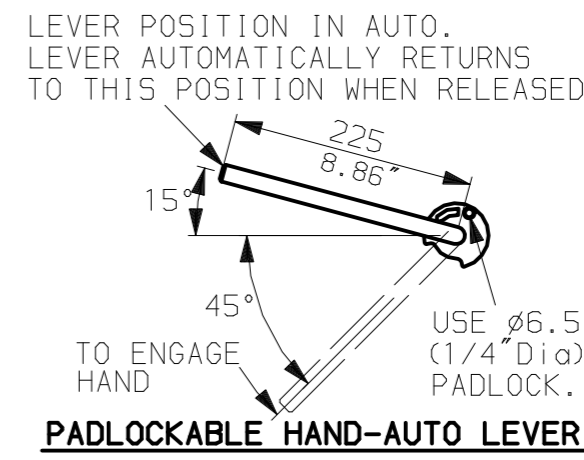
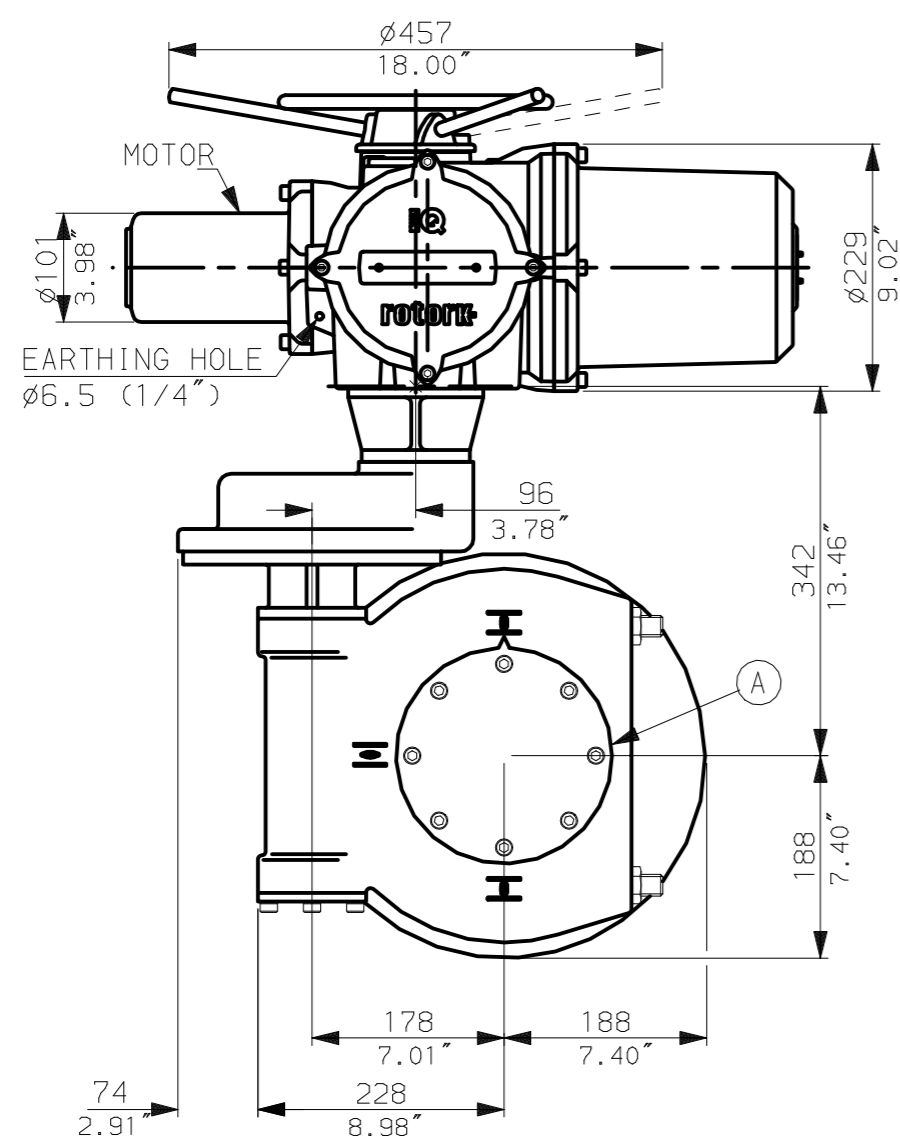
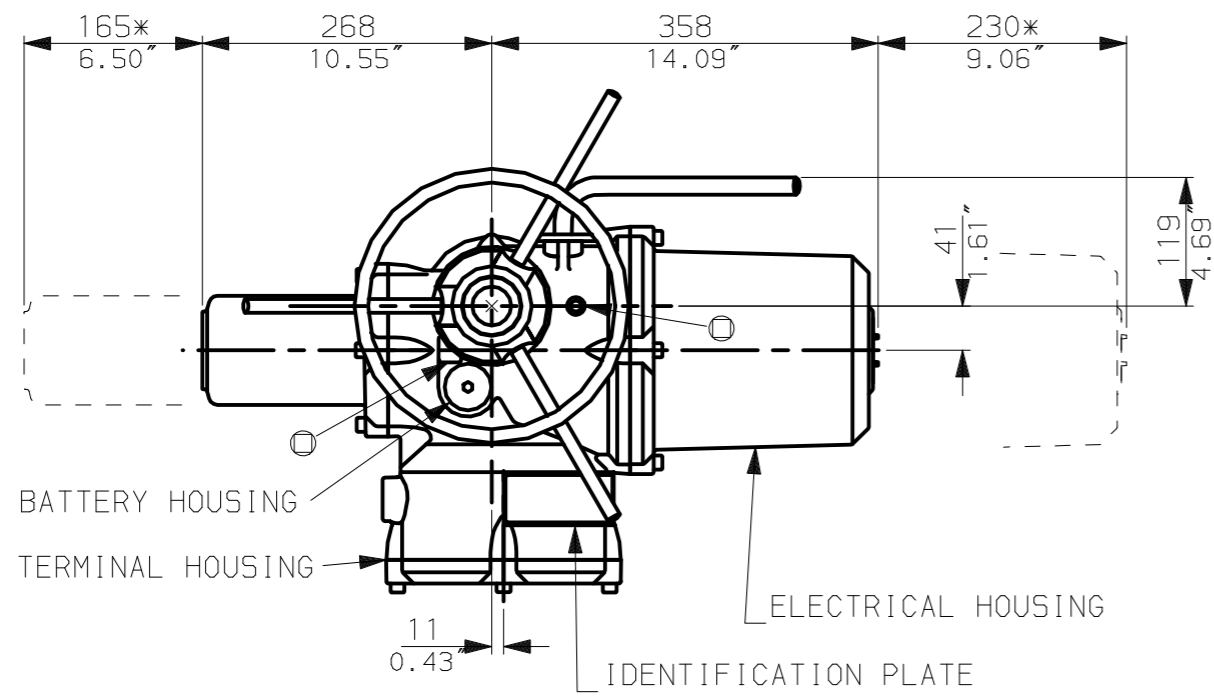
rotork
www.rotork.com

Rotork Controls Ltd.
Bath England, BA1 3JQ.
(Phone 01225-733200)
Rotork Controls Inc.
Rochester, NY 14624
(Phone 585-328-1550)

Title IQ10, 12, 18, (+IQ512), LTHW, IW(MOW)6(+63)RL,		
STANDARD DIMENSIONAL DATA		
Drawn CAD	Checked PRE	Ref Data Sheet
Date 150605	Job No IQ1LTHW_IW6R	

02	4.69" corrected from 6.50"
01	First Issue.
Scale	1:7 THIRD ANGLE PROJECTION
Drawing Number	IQ1LTHW_IW6R

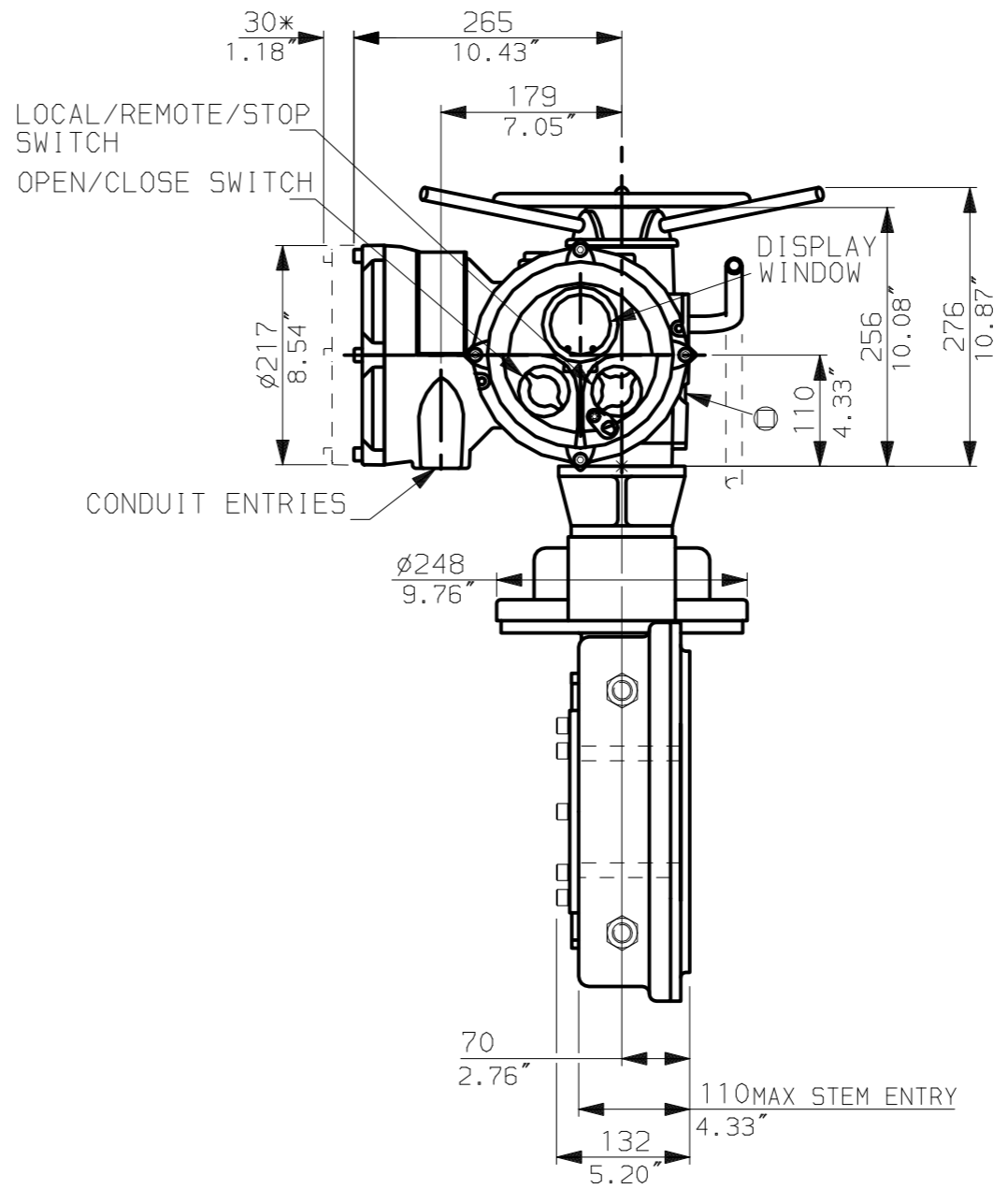
G
F
E
D
C
B
A



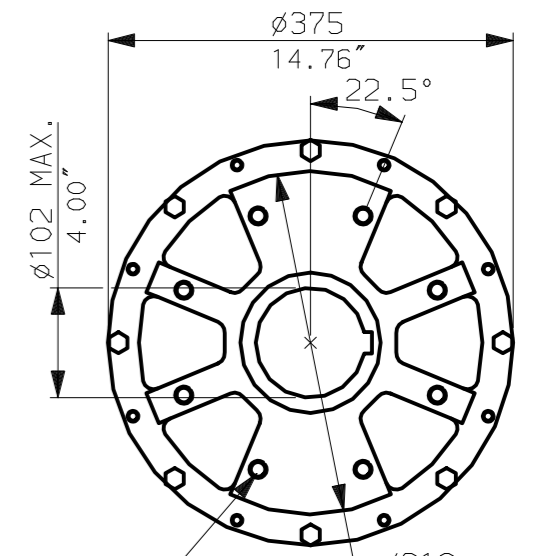
NOTES:
 :DIMENSIONS WITH '*' INDICATE COVER REMOVAL ALLOWANCE
 :NETT WEIGHT = 116kg (255lbs)
 : = OIL FILLER/DRAIN PLUG
 :THE INTERFACE PROVIDED FOR MOUNTING THE ACTUATOR OR SECOND STAGE GEARBOX ONTO THE VALVE SHOULD CONFORM TO GOOD ENGINEERING PRACTICES, ENSURING ADEQUATELY TOLERANCED LIMITS FOR PARALLELISM, PERPENDICULARITY AND CONCENTRICITY.

CONDUIT ENTRIES (N.T.S.)

Nos.1 & 3 TAPPED 1" NPT
 No.2 TAPPED 1 1/2" NPT
 STD ALTERNATIVES IF SPECIFIED
 2 X M25, 1 X M40
 2 X PG16, 1 X PG29



N.B. KEYWAY POS. CAN BE MOVED 90 OR 180° BY REMOVING 8 SCREWS MARKED (A) AND ROTATING OUTPUT SLEEVE.



"F" version
 8 HOLES TAPPED M16 x 16 DP EQUI-SPACED AS SHOWN ON A 254 PCD (ISO 5211-F25).
 "FA" version
 8 HOLES TAPPED 5/8"UNCx0.63"dp EQUI-SPACED AS SHOWN ON A 10" PCD (MSS SP101-FA25).

NOTE:
 Gearbox is shown with HIGH Ratio Input Reducer. (ie Ratios 350,420)
 See Data Sheet with IW6RL for LOW ratio option.

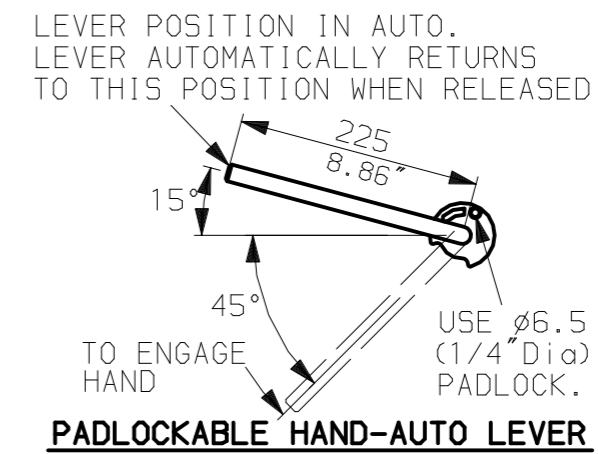
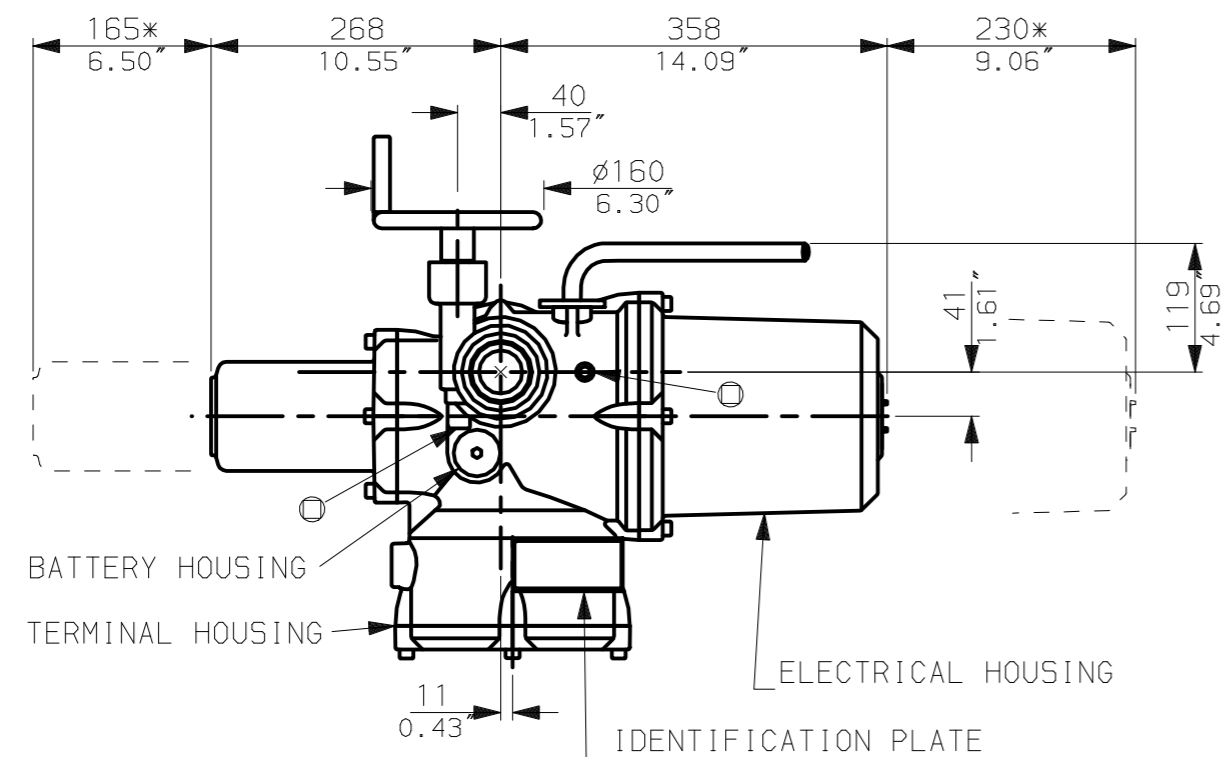


Rotork Controls Ltd.
 Bath England, BA1 3JQ.
 (Phone 01225-733200)
 Rotork Controls Inc.
 Rochester, NY 14624
 (Phone 585-328-1550)

Title IQ10, 12, 18, (+IQ512), LTHW, IW(MOW)6(+63)Rh,	
STANDARD DIMENSIONAL DATA	
Drawn CAD	Checked PRE Ref Data Sheet
Date 150605	Job No IQ1LTHW_IW6Rh

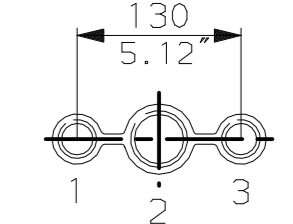
02	4.69" corrected from 6.50"
01	First Issue.
Scale	1:7 THIRD ANGLE PROJECTION
Drawing Number	IQ1LTHW_IW6Rh

1 | 2 | 3 | 4 | 5 | 6 | 7 | 8 | 9 | 10

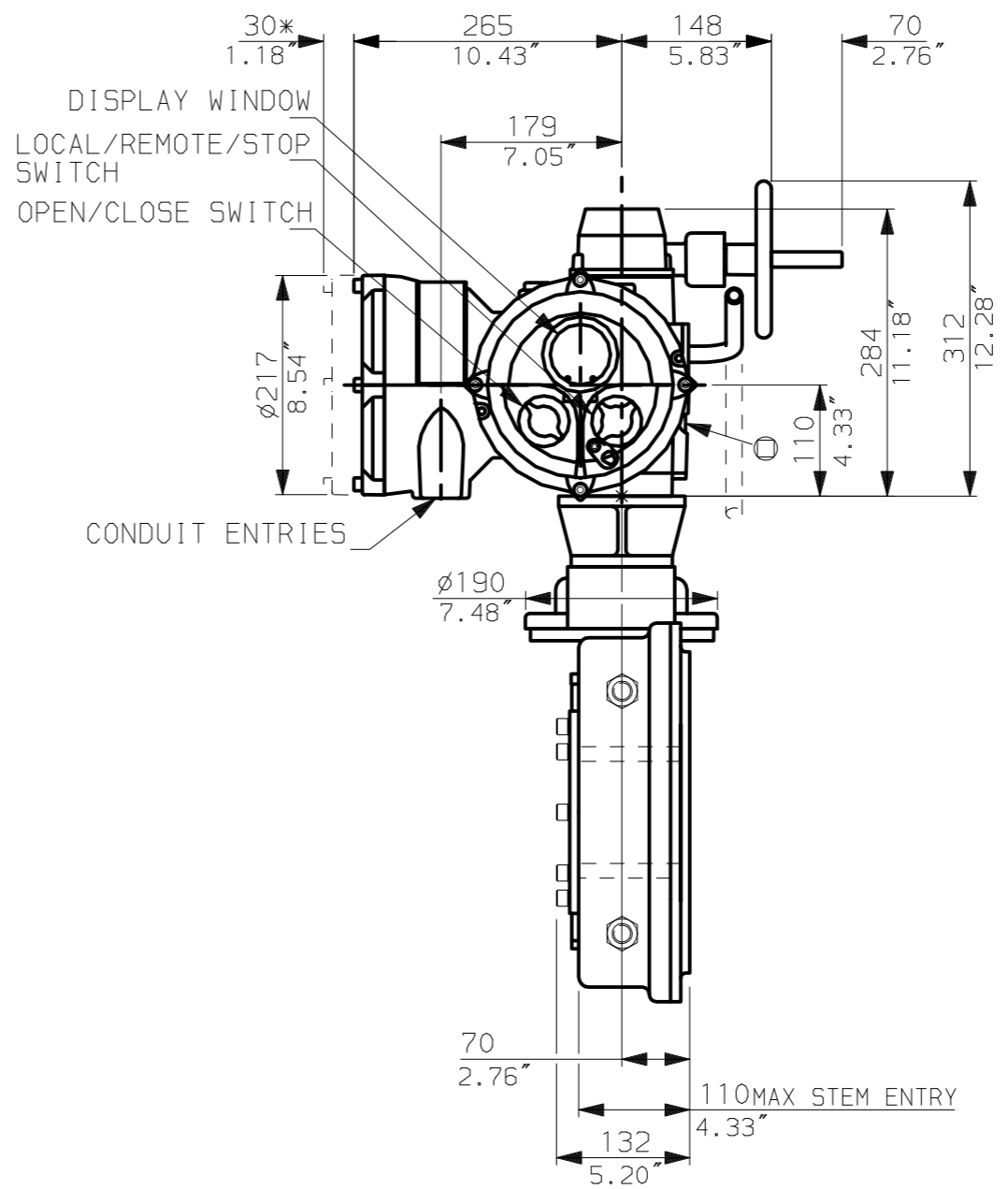
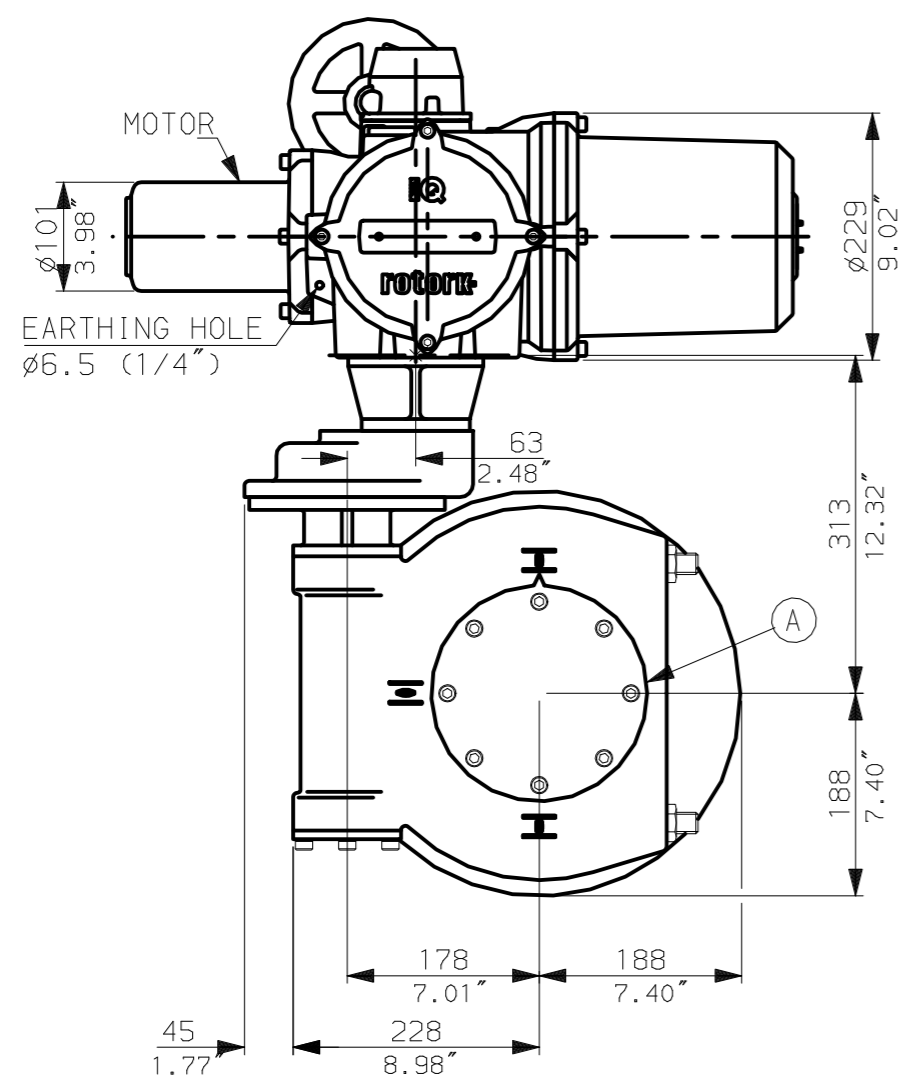


NOTES:
 :DIMENSIONS WITH '*' INDICATE COVER REMOVAL ALLOWANCE
 :NETT WEIGHT = 111kg (244lbs)
 : = OIL FILLER/DRAIN PLUG
 :THE INTERFACE PROVIDED FOR MOUNTING THE ACTUATOR OR SECOND STAGE GEARBOX ONTO THE VALVE SHOULD CONFORM TO GOOD ENGINEERING PRACTICES, ENSURING ADEQUATELY TOLERANCED LIMITS FOR PARALLELISM, PERPENDICULARITY AND CONCENTRICITY.

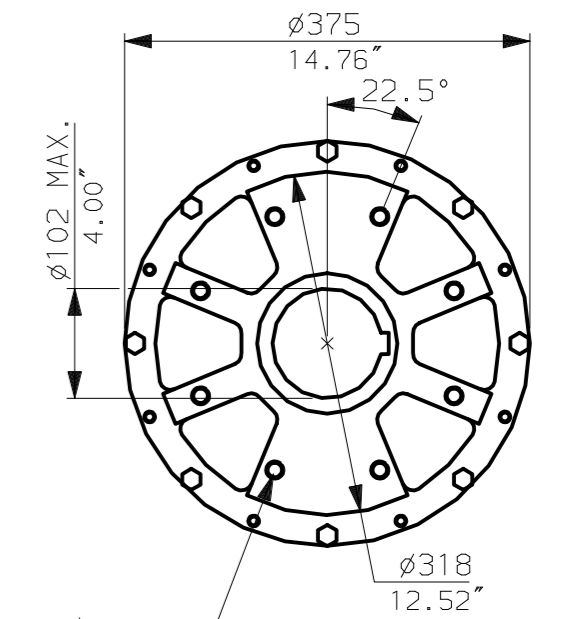
CONDUIT ENTRIES (N.T.S)



Nos.1 & 3 TAPPED 1" NPT
 No.2 TAPPED 1 1/2" NPT
 STD ALTERNATIVES IF SPECIFIED
 2 X M25, 1 X M40
 2 X PG16, 1 X PG29



N.B. KEYWAY POS. CAN BE MOVED 90 OR 180° BY REMOVING 8 SCREWS MARKED (A) AND ROTATING OUTPUT SLEEVE.



"F" version

8 HOLES TAPPED M16 x 16 DP EQUI-SPACED AS SHOWN ON A 254 PCD (ISO 5211-F25).

"FA" version

8 HOLES TAPPED 5/8" UNC x 0.63" dp EQUI-SPACED AS SHOWN ON A 10" PCD (MSS SP101-FA25).

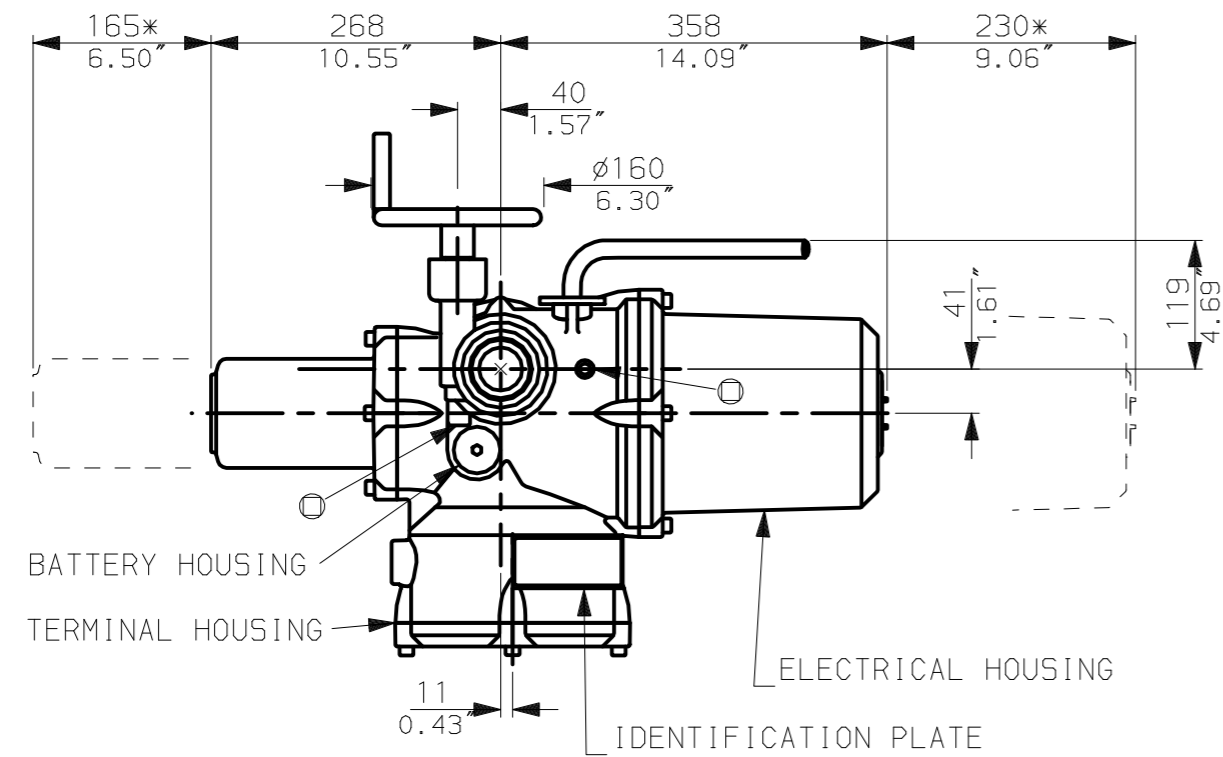
NOTE:
 Gearbox is shown with LOW Ratio Input Reducer. (ie Ratios 140,210,280)
 See Data Sheet with IW6Rh for HIGH ratio option.



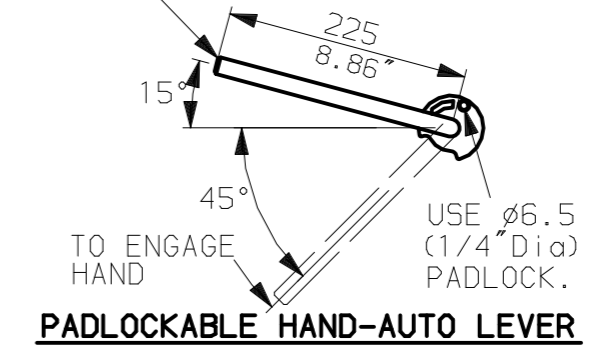
Rotork Controls Ltd.
 Bath England, BA1 3JQ.
 (Phone 01225-733200)
 Rotork Controls Inc.
 Rochester, NY 14624
 (Phone 585-328-1550)

Title IQ10, 12, 18, (+IQ512), SHW, IW (MOW) 6 (+63) RL,	
STANDARD DIMENSIONAL DATA	
Drawn CAD	Checked PRE Ref Data Sheet
Date 150605	Job No IQ1SHW_IW6RL

02	4.69" corrected from 6.50"
01 Issue	First Issue.
Scale	1:7 THIRD ANGLE PROJECTION
Drawing Number	IQ1SHW_IW6RL

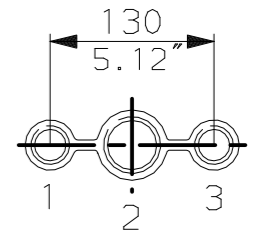


LEVER POSITION IN AUTO.
LEVER AUTOMATICALLY RETURNS
TO THIS POSITION WHEN RELEASED

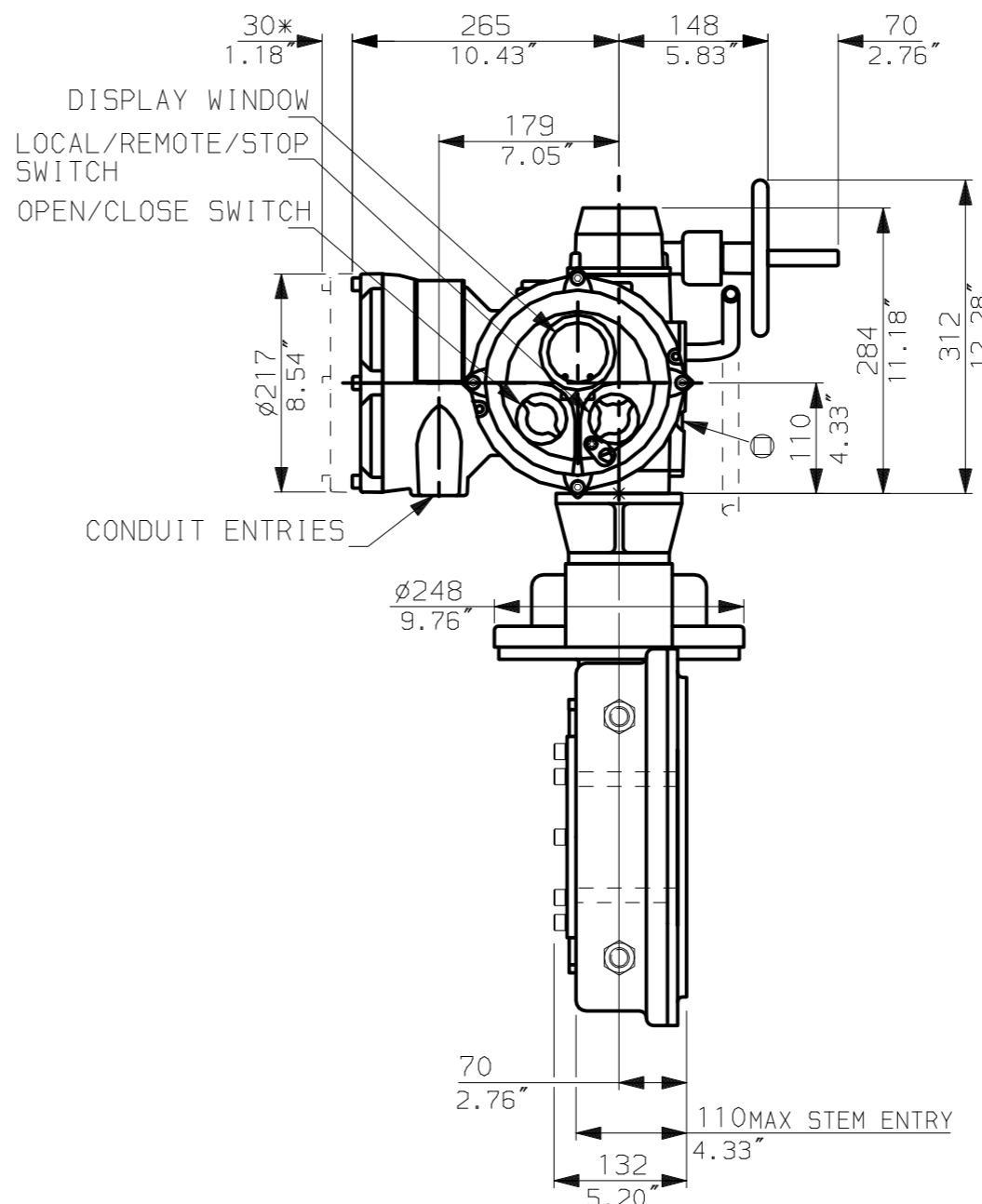
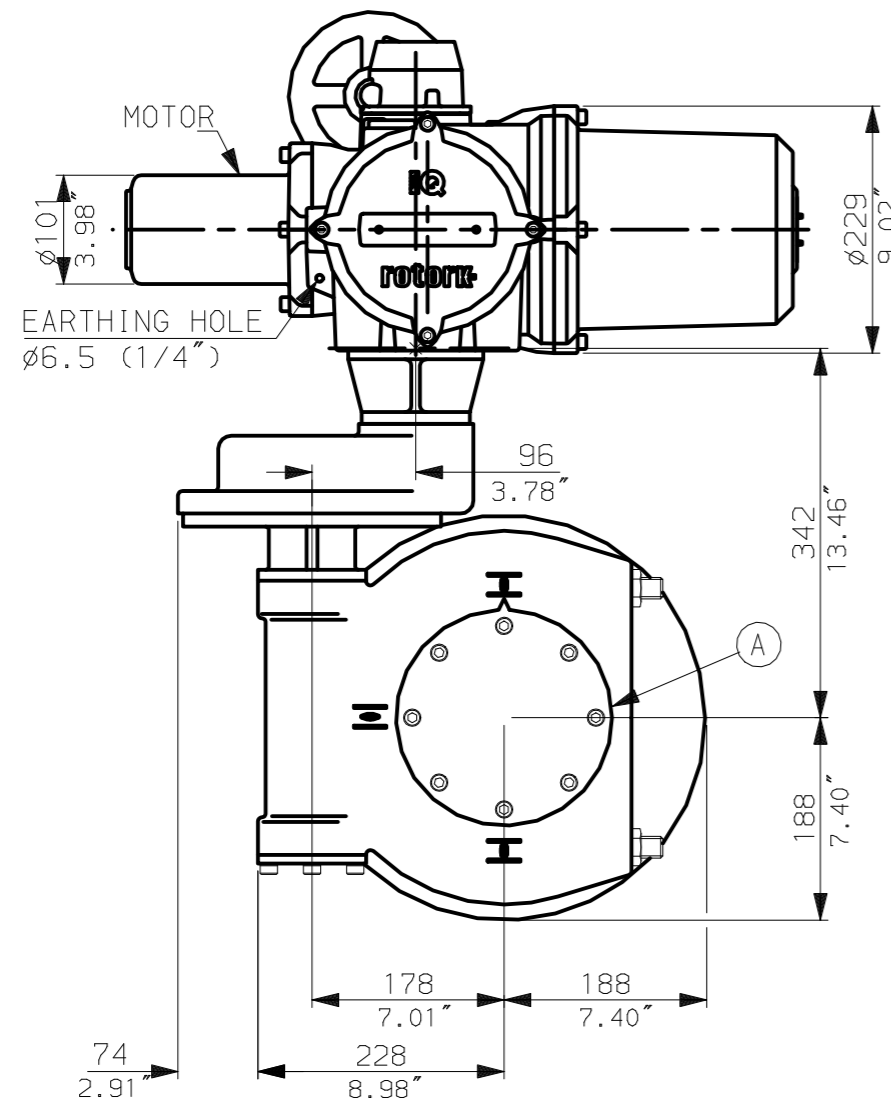


NOTES:
:DIMENSIONS WITH '*' INDICATE
COVER REMOVAL ALLOWANCE
:NETT WEIGHT = 116kg (255lbs)
:⊙ = OIL FILLER/DRAIN PLUG
:THE INTERFACE PROVIDED FOR MOUNTING THE
ACTUATOR OR SECOND STAGE GEARBOX ONTO THE
VALVE SHOULD CONFORM TO GOOD ENGINEERING
PRACTICES, ENSURING ADEQUATELY TOLERANCED
LIMITS FOR PARALLELISM, PERPENDICULARITY
AND CONCENTRICITY.

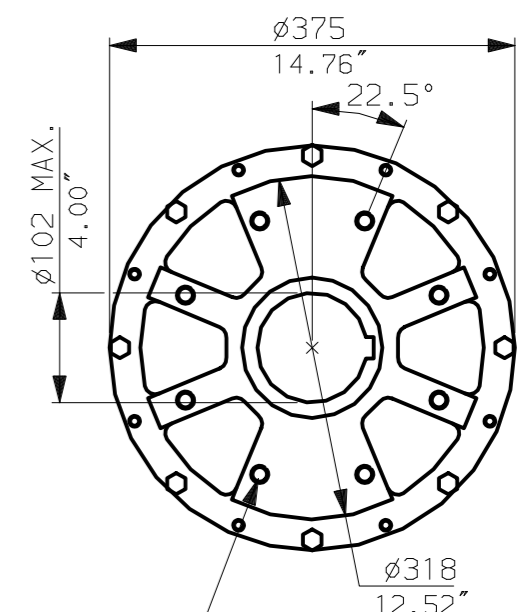
CONDUIT ENTRIES (N.T.S)



Nos.1 & 3 TAPPED 1" NPT
No.2 TAPPED 1 1/2" NPT
STD ALTERNATIVES IF SPECIFIED
2 X M25, 1 X M40
2 X PG16, 1 X PG29



N.B. KEYWAY POS. CAN BE MOVED
90 OR 180° BY REMOVING 8 SCREWS
MARKED (A) AND ROTATING OUTPUT
SLEEVE.



"F" version

8 HOLES TAPPED M16 x 16 DP
EQUI-SPACED AS SHOWN ON A
254 PCD (ISO 5211-F25).

"FA" version

8 HOLES TAPPED 5/8"UNCx0.63"dp
EQUI-SPACED AS SHOWN ON A
10" PCD (MSS SP101-FA25).

NOTE:

Gearbox is shown with HIGH Ratio Input Reducer.
(ie Ratios 350,420)
See Data Sheet with IW6RL for LOW ratio option.

rotork
www.rotork.com

Rotork Controls Ltd.
Bath England, BA1 3JQ.
(Phone 01225-733200)
Rotork Controls Inc.
Rochester, NY 14624
(Phone 585-328-1550)

Title IQ10, 12, 18, (+IQ512), SHW, IW (MOW) 6 (+63) Rh,		
STANDARD DIMENSIONAL DATA		
Drawn CAD	Checked PRE	Ref Data Sheet
Date 150605	Job No	IQ1SHW_IW6Rh

02	4.69" corrected from 6.50"
01	First Issue.
Scale 1:7 THIRD ANGLE PROJECTION	
Drawing Number	IQ1SHW_IW6Rh