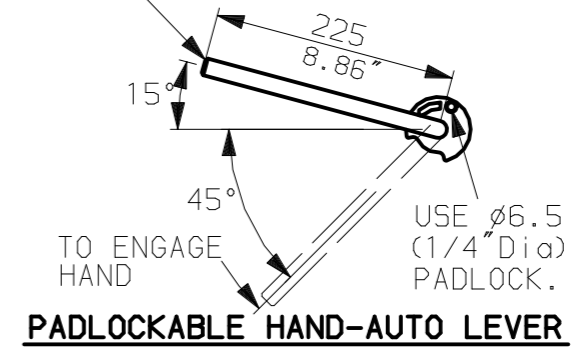
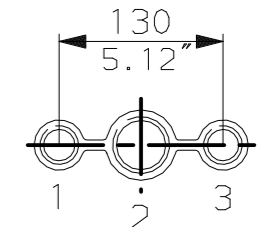


LEVER POSITION IN AUTO.  
LEVER AUTOMATICALLY RETURNS  
TO THIS POSITION WHEN RELEASED

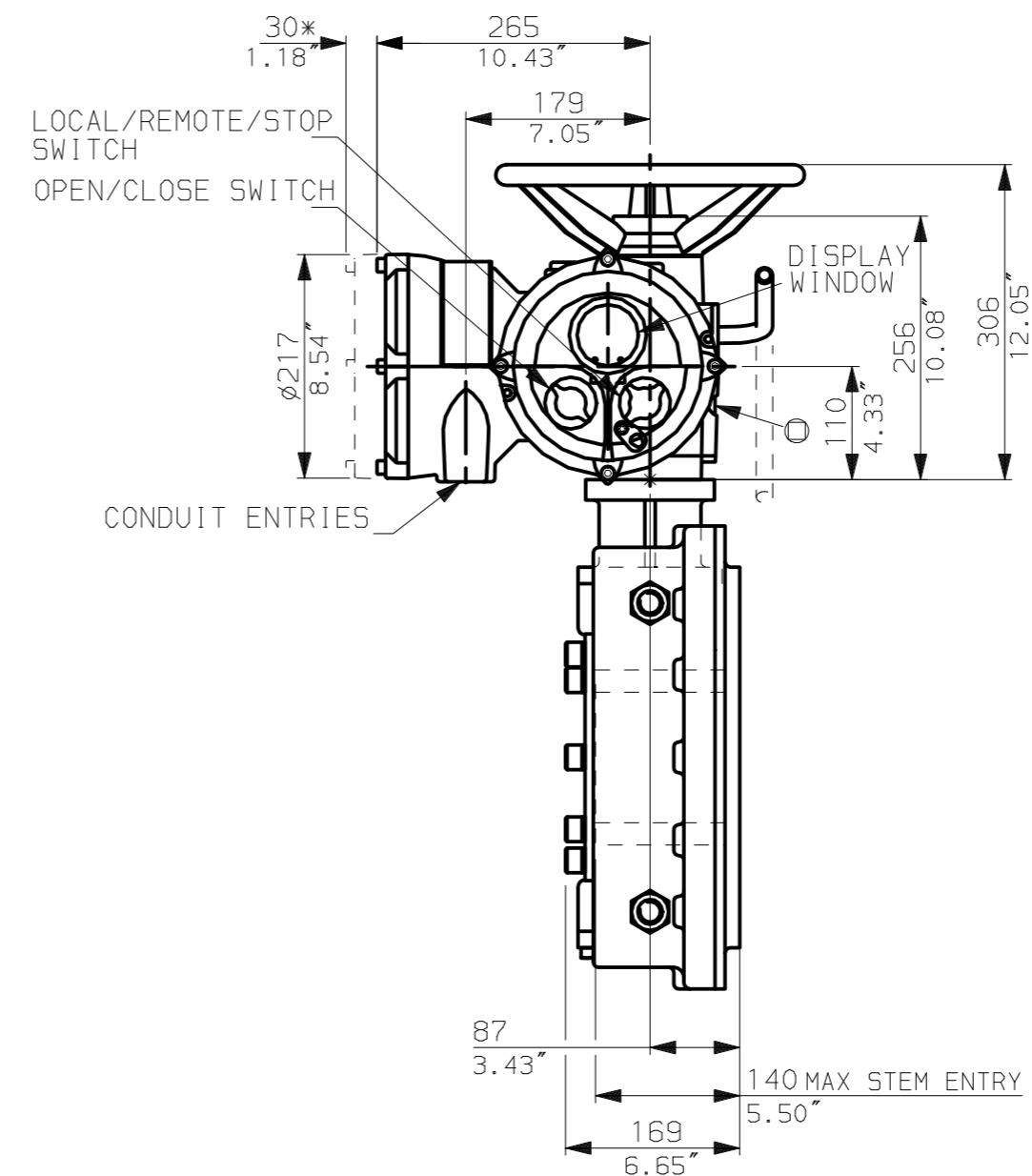
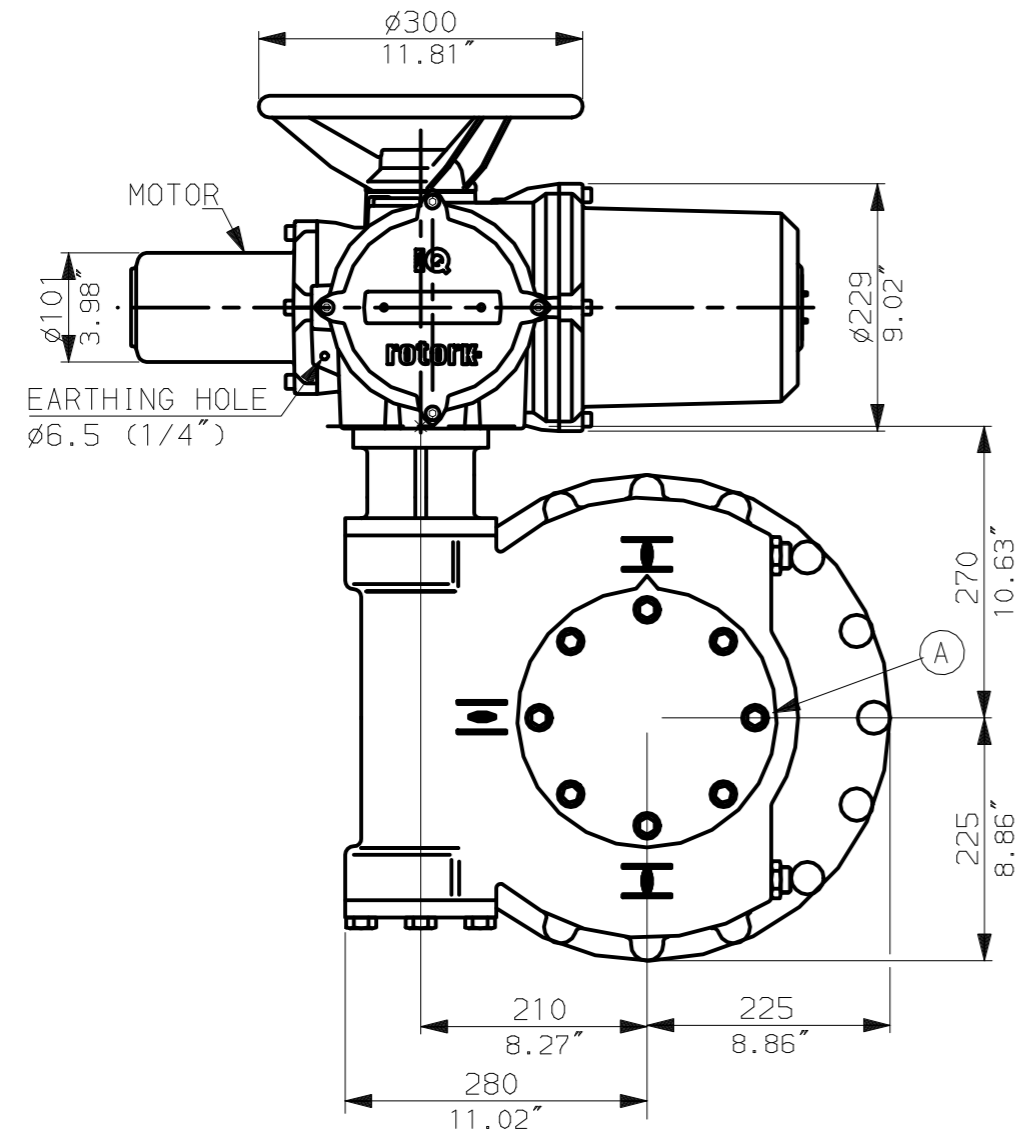


NOTES:  
:DIMENSIONS WITH '\*' INDICATE COVER REMOVAL ALLOWANCE  
:NETT WEIGHT = 152kg (334lbs)  
: = OIL FILLER/DRAIN PLUG  
:THE INTERFACE PROVIDED FOR MOUNTING THE ACTUATOR OR SECOND STAGE GEARBOX ONTO THE VALVE SHOULD CONFORM TO GOOD ENGINEERING PRACTICES, ENSURING ADEQUATELY TOLERANCED LIMITS FOR PARALLELISM, PERPENDICULARITY AND CONCENTRICITY.

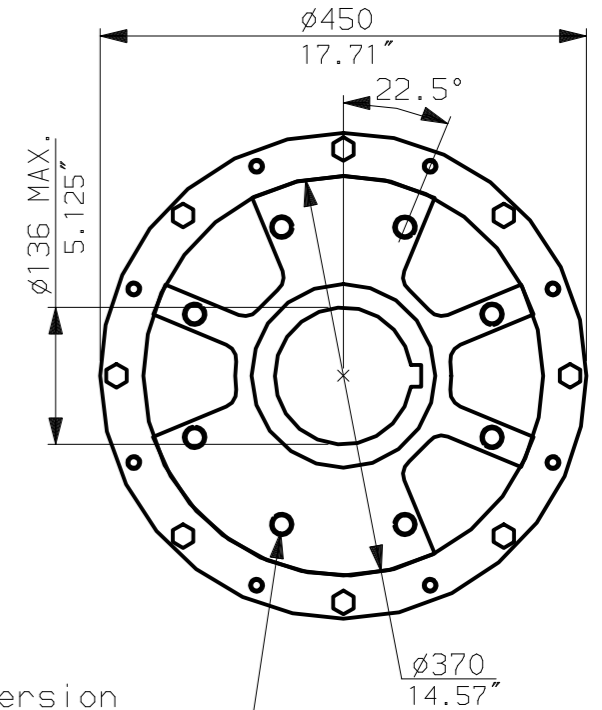
**CONDUIT ENTRIES** (N.T.S)



Nos.1 & 3 TAPPED 1" NPT  
No.2 TAPPED 1 1/2" NPT  
STD ALTERNATIVES IF SPECIFIED  
2 X M25, 1 X M40  
2 X PG16, 1 X PG29



N.B. KEYWAY POS. CAN BE MOVED 90 OR 180° BY REMOVING 8 SCREWS MARKED (A) AND ROTATING OUTPUT SLEEVE.



"F" version

8 HOLES TAPPED M20 x 24 DP  
EQUI-SPACED AS SHOWN ON A  
298 PCD (ISO 5211-F30).

"FA" version

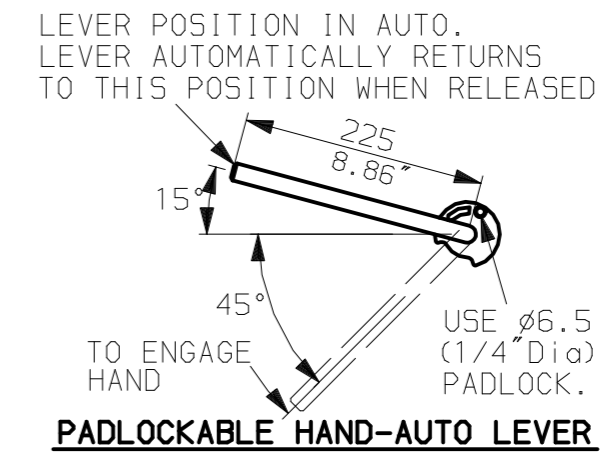
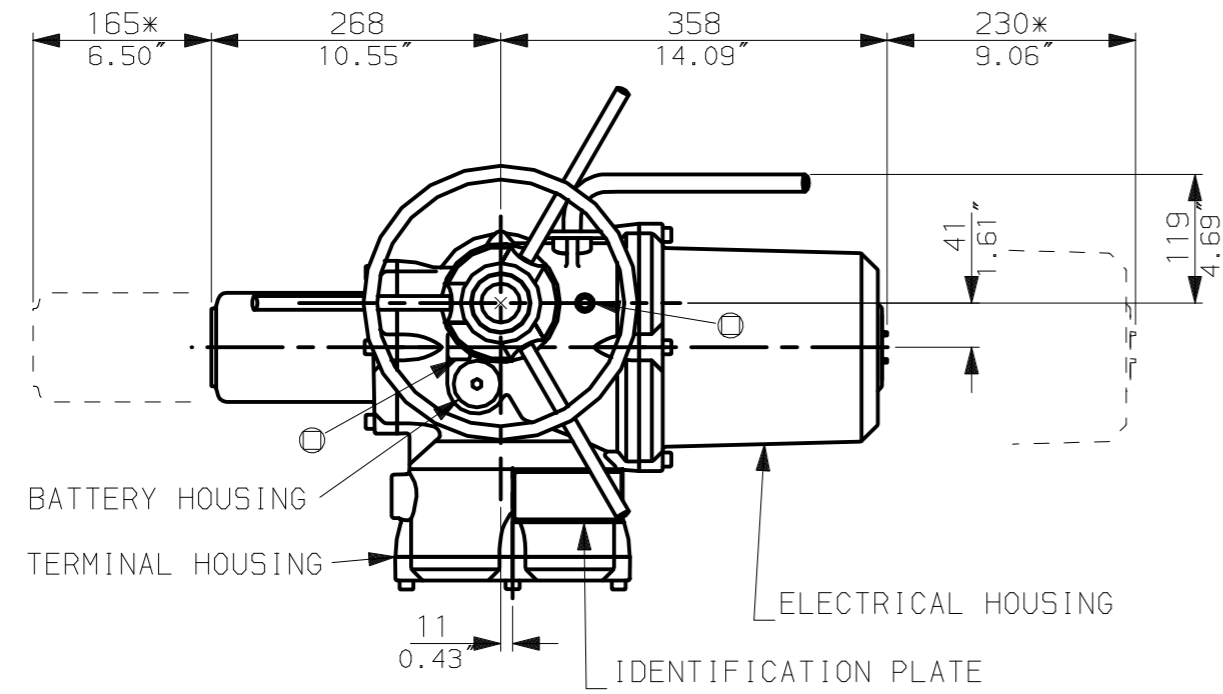
8 HOLES TAPPED 3/4" UNC x 0.94" dp  
EQUI-SPACED AS SHOWN ON A  
11.75" PCD (MSS SP101-FA30).

**rotork**  
www.rotork.com

Rotork Controls Ltd.  
Bath England, BA1 3JQ.  
(Phone 01225-733200)  
Rotork Controls Inc.  
Rochester, NY 14624  
(Phone 585-328-1550)

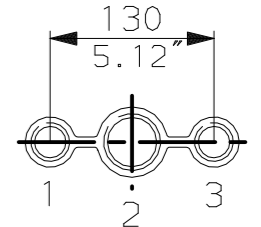
Title IQ10, 12, 18, (+IQS12), THW, IW (MOW) 2.47 (+72)		
STANDARD DIMENSIONAL DATA		
Drawn CAD	Checked PRE	Ref Data Sheet
Date 150605	Job No IQ1THW_IW7	

02	4.69" corrected from 6.50"
01	First Issue.
Scale	1:7 THIRD ANGLE PROJECTION
Drawing Number	IQ1THW_IW7

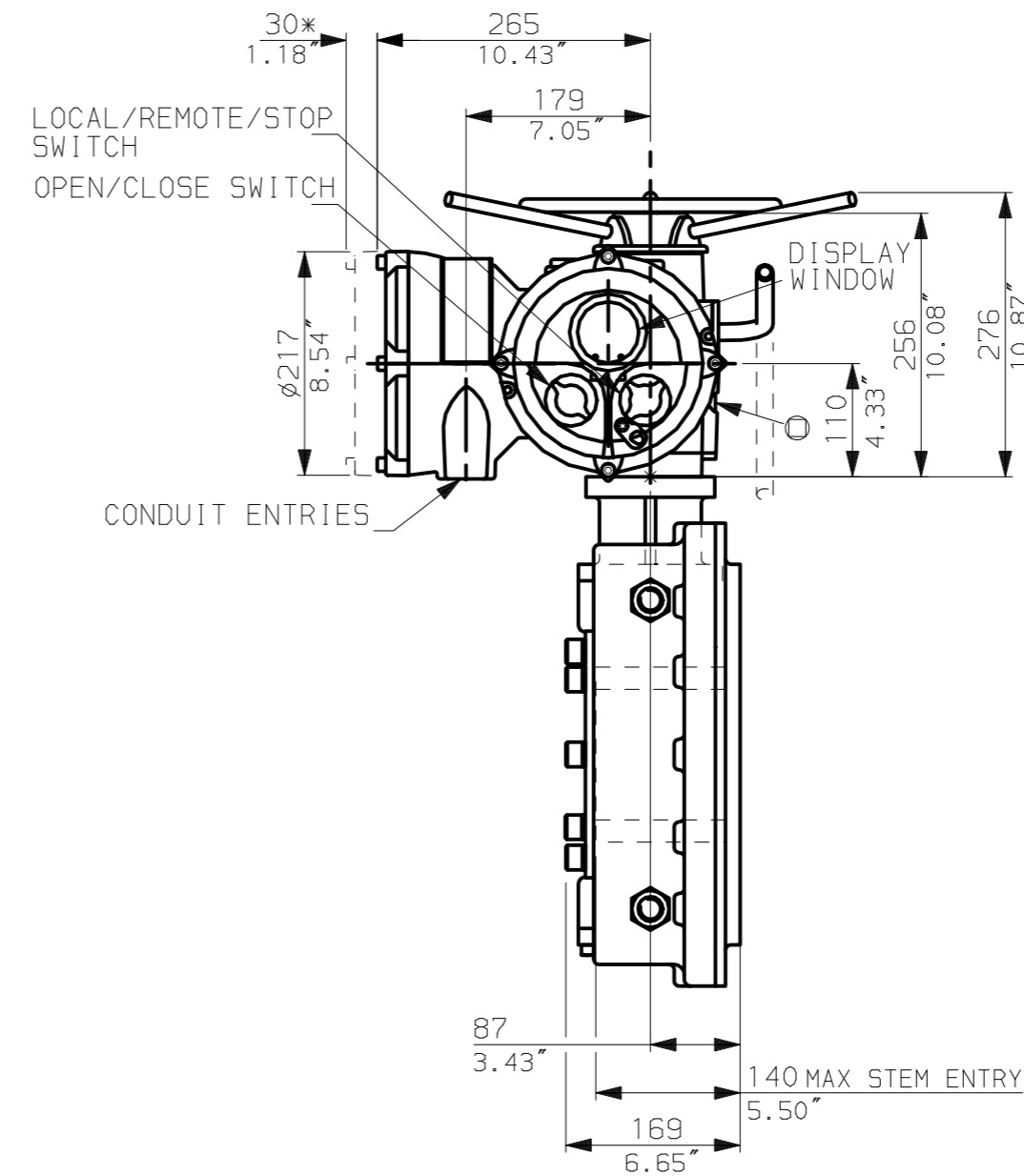
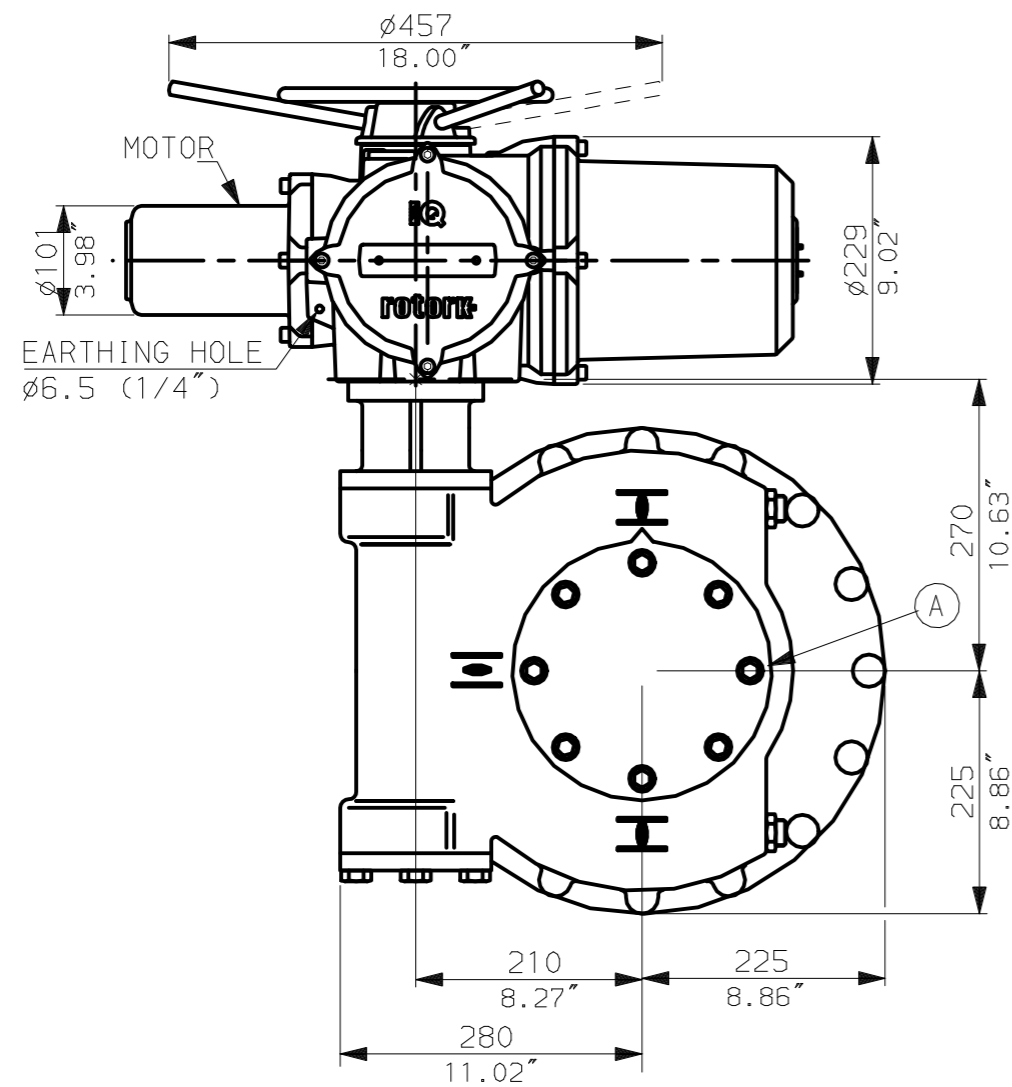


NOTES:  
:DIMENSIONS WITH '\*' INDICATE COVER REMOVAL ALLOWANCE  
:NETT WEIGHT = 152kg (334lbs)  
:  $\odot$  = OIL FILLER/DRAIN PLUG  
:THE INTERFACE PROVIDED FOR MOUNTING THE ACTUATOR OR SECOND STAGE GEARBOX ONTO THE VALVE SHOULD CONFORM TO GOOD ENGINEERING PRACTICES, ENSURING ADEQUATELY TOLERANCED LIMITS FOR PARALLELISM, PERPENDICULARITY AND CONCENTRICITY.

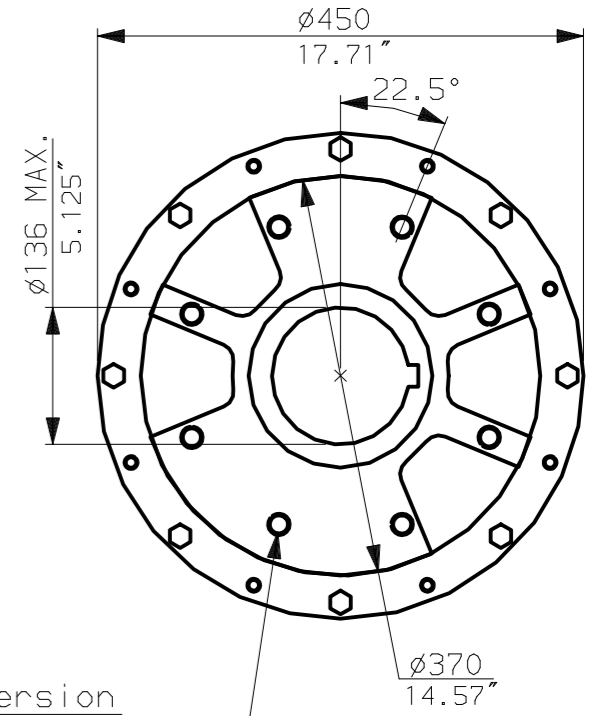
**CONDUIT ENTRIES** (N.T.S)



Nos.1 & 3 TAPPED 1" NPT  
No.2 TAPPED 1 1/2" NPT  
STD ALTERNATIVES IF SPECIFIED  
2 X M25, 1 X M40  
2 X PG16, 1 X PG29



N.B. KEYWAY POS. CAN BE MOVED 90 OR 180° BY REMOVING 8 SCREWS MARKED (A) AND ROTATING OUTPUT SLEEVE.



"F" version

8 HOLES TAPPED M20 x 24 DP  
EQUI-SPACED AS SHOWN ON A  
298 PCD (150 5211-F30).

"FA" version

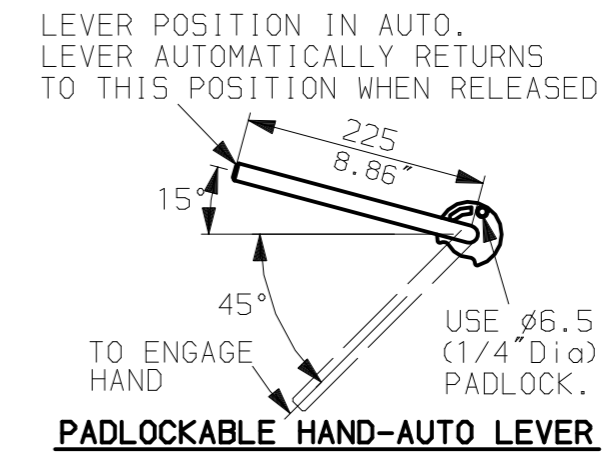
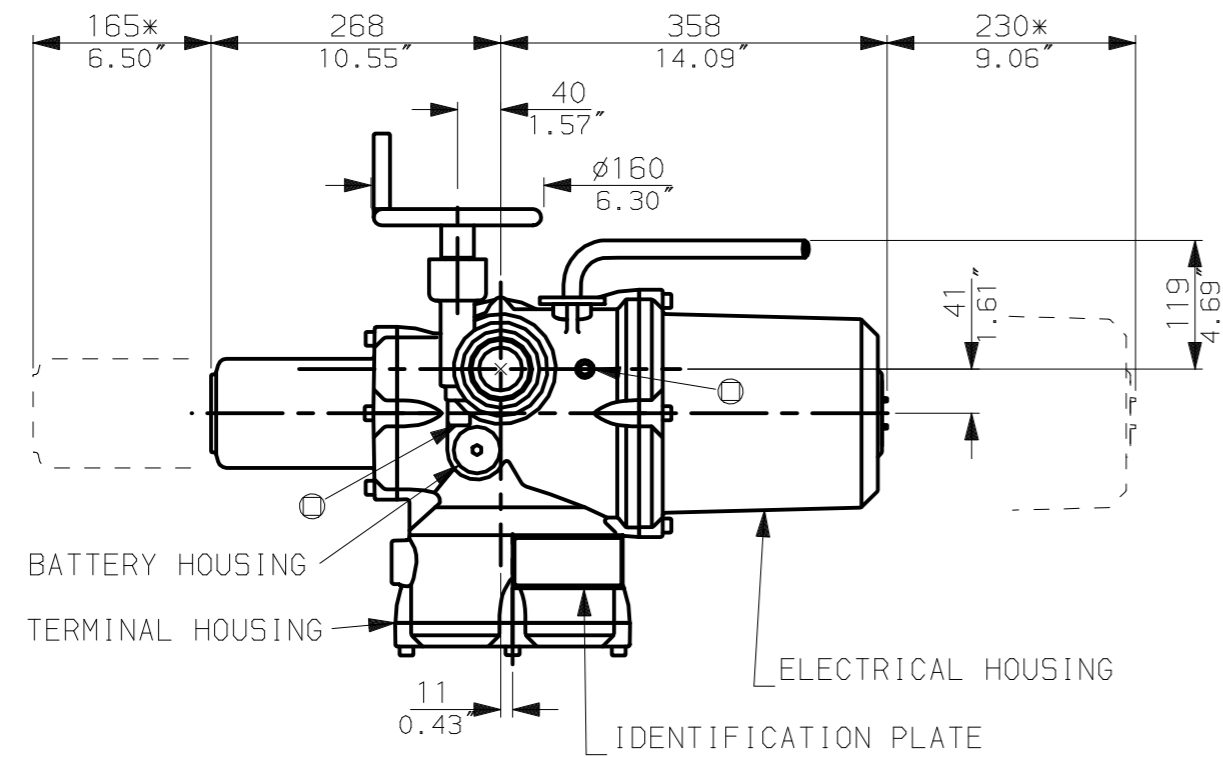
8 HOLES TAPPED 3/4" UNC x 0.94" dp  
EQUI-SPACED AS SHOWN ON A  
11.75" PCD (MSS 5P101-FA30).

**rotork**  
www.rotork.com

Rotork Controls Ltd.  
Bath England, BA1 3JQ.  
(Phone 01225-733200)  
Rotork Controls Inc.  
Rochester, NY 14624  
(Phone 585-328-1550)

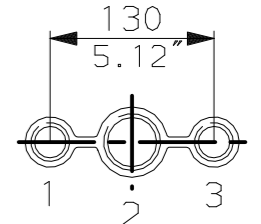
Title IQ10, 12, 18, (+IQ512), LTHW, IW (MOW) 7 (+72),		
STANDARD DIMENSIONAL DATA		
Drawn CAD	Checked PRE	Ref Data Sheet
Date 150605	Job No IQ1LTHW_IW7	

02	4.69" corrected from 6.50"
01 Issue	First Issue.
Scale	1:7 THIRD ANGLE PROJECTION
Drawing Number	IQ1LTHW_IW7

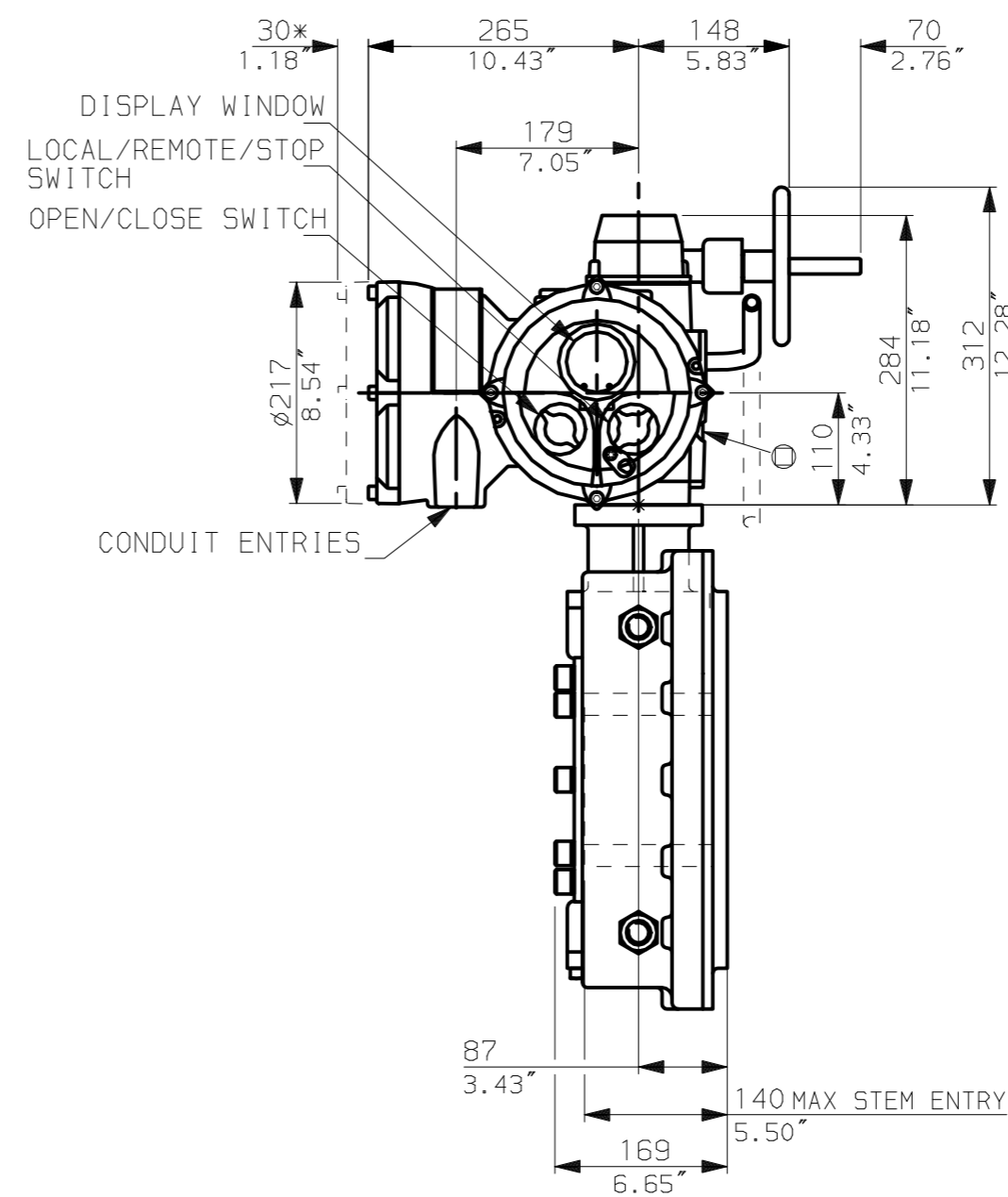
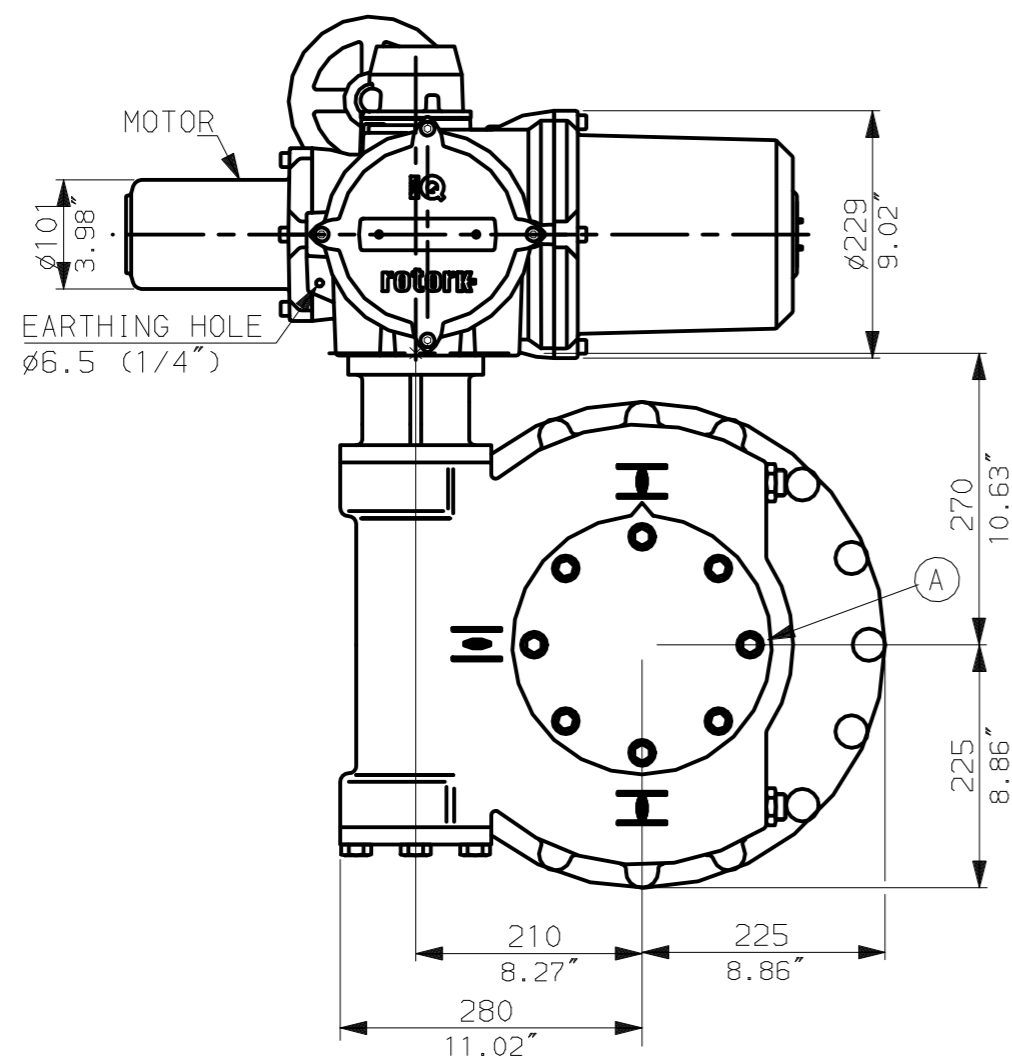


NOTES:  
 :DIMENSIONS WITH '\*' INDICATE COVER REMOVAL ALLOWANCE  
 :NETT WEIGHT = 152kg (334lbs)  
 : = OIL FILLER/DRAIN PLUG  
 :THE INTERFACE PROVIDED FOR MOUNTING THE ACTUATOR OR SECOND STAGE GEARBOX ONTO THE VALVE SHOULD CONFORM TO GOOD ENGINEERING PRACTICES, ENSURING ADEQUATELY TOLERANCED LIMITS FOR PARALLELISM, PERPENDICULARITY AND CONCENTRICITY.

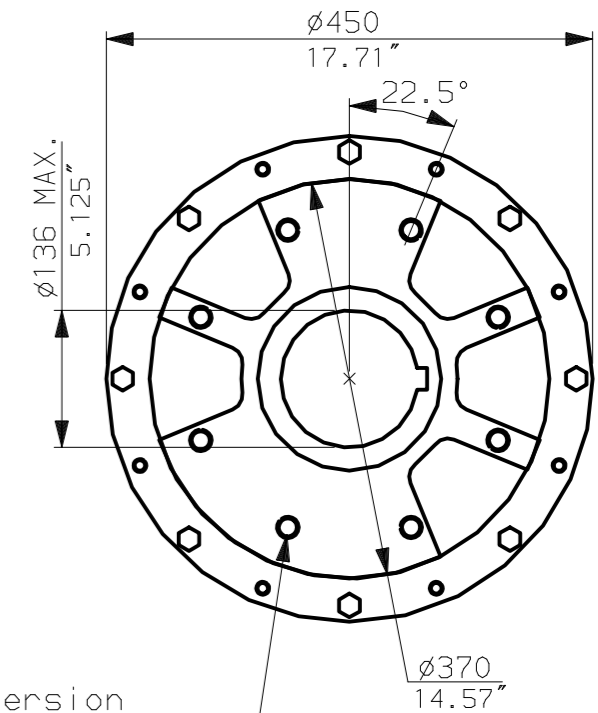
**CONDUIT ENTRIES** (N.T.S)



Nos.1 & 3 TAPPED 1" NPT  
 No.2 TAPPED 1 1/2" NPT  
 STD ALTERNATIVES IF SPECIFIED  
 2 X M25, 1 X M40  
 2 X PG16, 1 X PG29



N.B. KEYWAY POS. CAN BE MOVED 90 OR 180° BY REMOVING 8 SCREWS MARKED (A) AND ROTATING OUTPUT SLEEVE.



**"F" version**

8 HOLES TAPPED M20 x 24 DP  
 EQUI-SPACED AS SHOWN ON A  
 298 PCD (ISO 5211-F30).

**"FA" version**

8 HOLES TAPPED 3/4" UNC x 0.94" dp  
 EQUI-SPACED AS SHOWN ON A  
 11.75" PCD (MSS SP101-FA30).

**rotork**  
 www.rotork.com

Rotork Controls Ltd.  
 Bath England, BA1 3JQ.  
 (Phone 01225-733200)  
 Rotork Controls Inc.  
 Rochester, NY 14624  
 (Phone 585-328-1550)

Title IQ10, 12, 18, (+IQS12), SHW, IW (MOW) 7 (+72)		
STANDARD DIMENSIONAL DATA		
Drawn CAD	Checked PRE	Ref Data Sheet
Date 150605	Job No IQ1SHW_IW7	

02	4.69" corrected from 6.50"
01	First Issue.
Issue	
Scale	1:7 THIRD ANGLE PROJECTION
Drawing Number	IQ1SHW_IW7