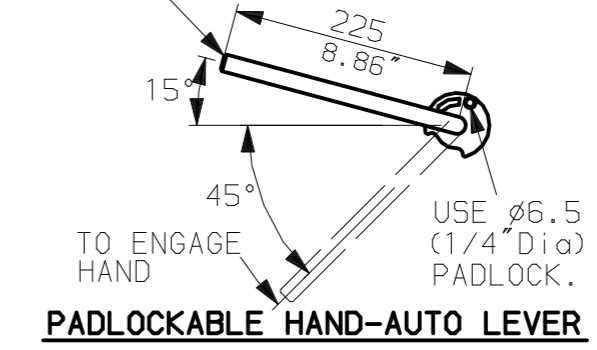
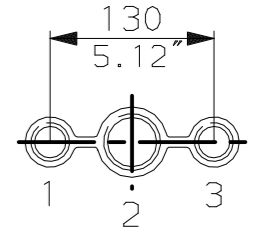


LEVER POSITION IN AUTO.  
LEVER AUTOMATICALLY RETURNS  
TO THIS POSITION WHEN RELEASED

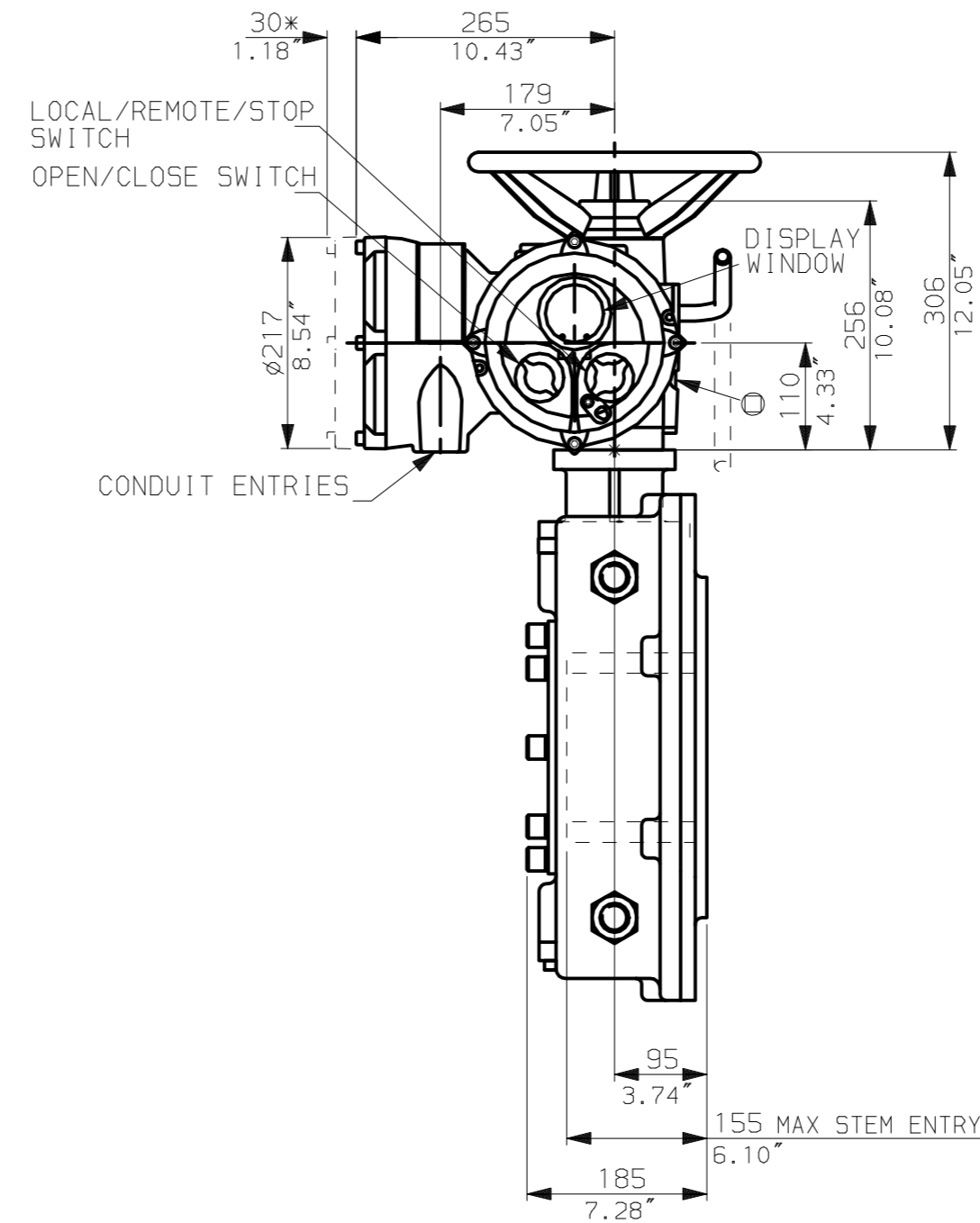
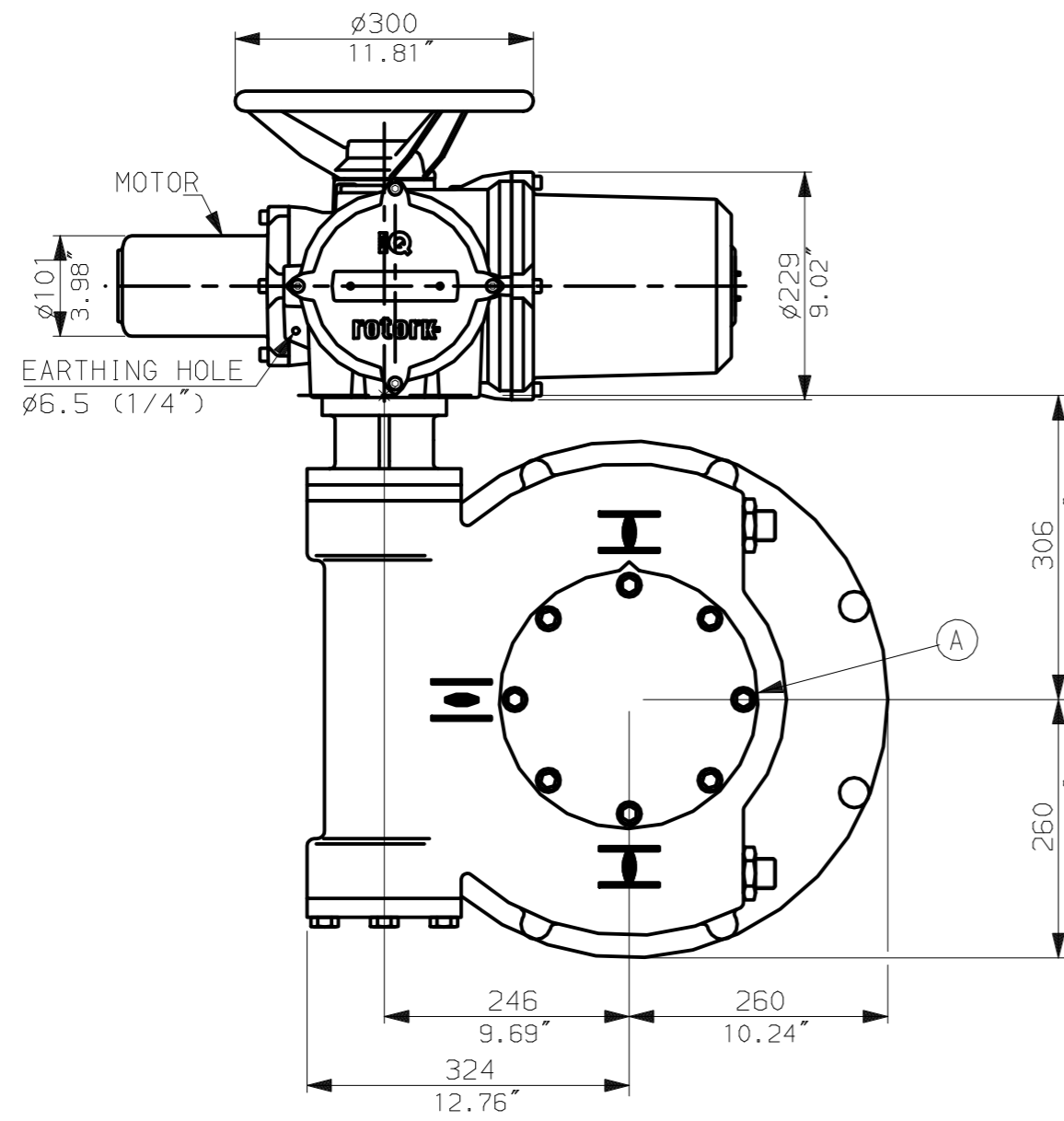


NOTES:  
: DIMENSIONS WITH '\*' INDICATE COVER REMOVAL ALLOWANCE  
: NETT WEIGHT = 212kg (466lbs)  
:  $\phi$  = OIL FILLER/DRAIN PLUG  
: THE INTERFACE PROVIDED FOR MOUNTING THE ACTUATOR OR SECOND STAGE GEARBOX ONTO THE VALVE SHOULD CONFORM TO GOOD ENGINEERING PRACTICES, ENSURING ADEQUATELY TOLERANCED LIMITS FOR PARALLELISM, PERPENDICULARITY AND CONCENTRICITY.

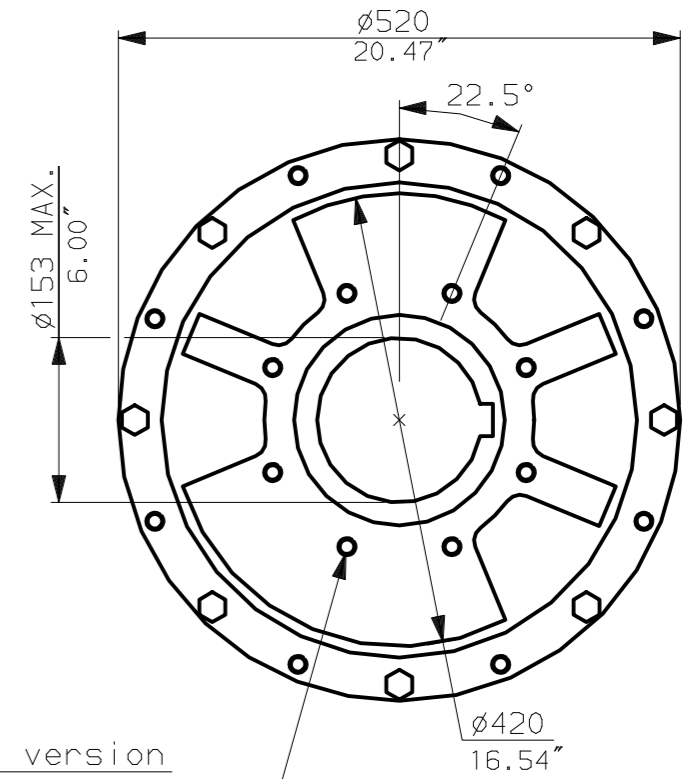
**CONDUIT ENTRIES** (N.T.S)



Nos.1 & 3 TAPPED 1" NPT  
No.2 TAPPED 1 1/2" NPT  
STD ALTERNATIVES IF SPECIFIED  
2 X M25, 1 X M40  
2 X PG16, 1 X PG29



N.B. KEYWAY POS. CAN BE MOVED 90 OR 180° BY REMOVING 8 SCREWS MARKED (A) AND ROTATING OUTPUT SLEEVE.



"F" version  
8 HOLES TAPPED M16 x 30 DP  
EQUI-SPACED AS SHOWN ON A  
254 PCD (ISO 5211-F25).

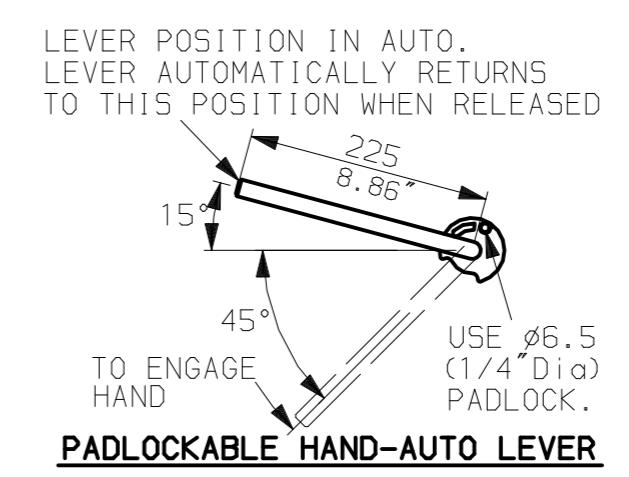
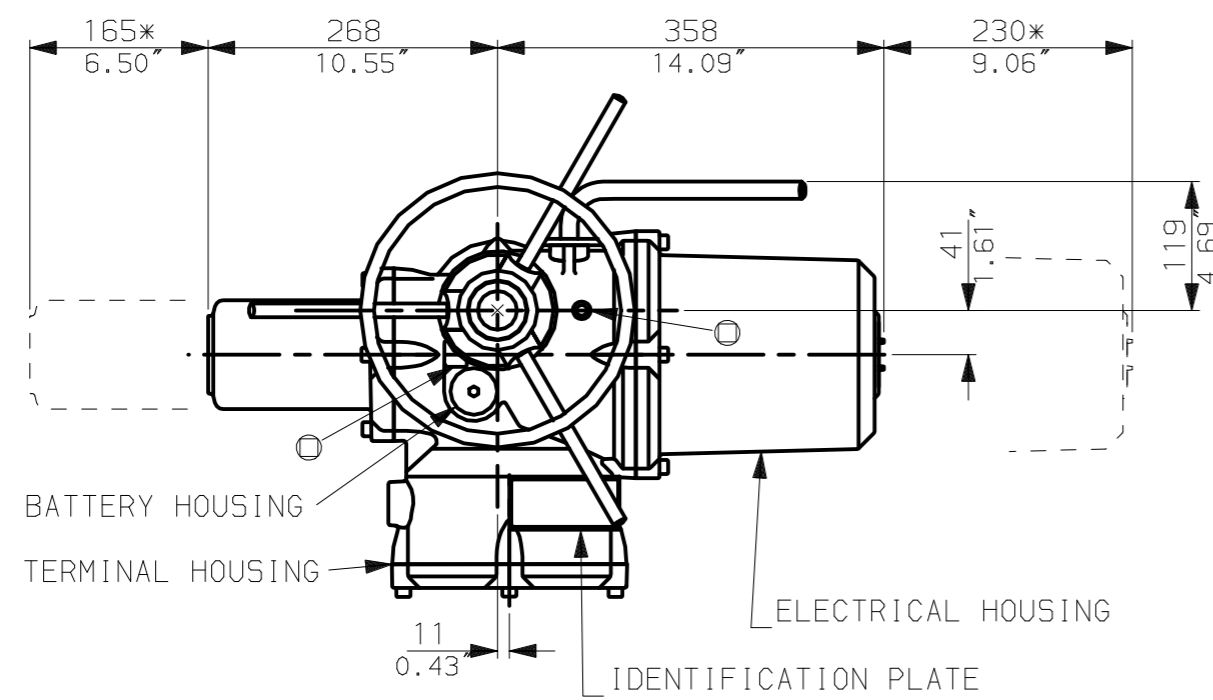
"FA" version  
8 HOLES TAPPED 5/8" UNC x 1.18" dp  
EQUI-SPACED AS SHOWN ON A  
10" PCD (MSS SP101-FA25).



Rotork Controls Ltd.  
Bath England, BA1 3JQ.  
(Phone 01225-733200)  
Rotork Controls Inc.  
Rochester, NY 14624  
(Phone 585-328-1550)

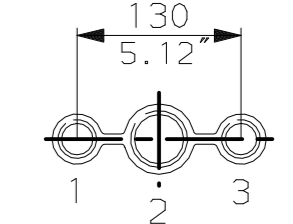
Title IQ10, 12, 18, (+IQ512), THW, IW (MOW) 8 (+82+85),		
STANDARD DIMENSIONAL DATA		
Drawn CAD	Checked PRE	Ref Data Sheet
Date 150605	Job No IQ1THW_IW8	

02	4.69" corrected from 6.50"
01	First Issue.
Issue	
Scale	1:7 THIRD ANGLE PROJECTION
Drawing Number	IQ1THW_IW8

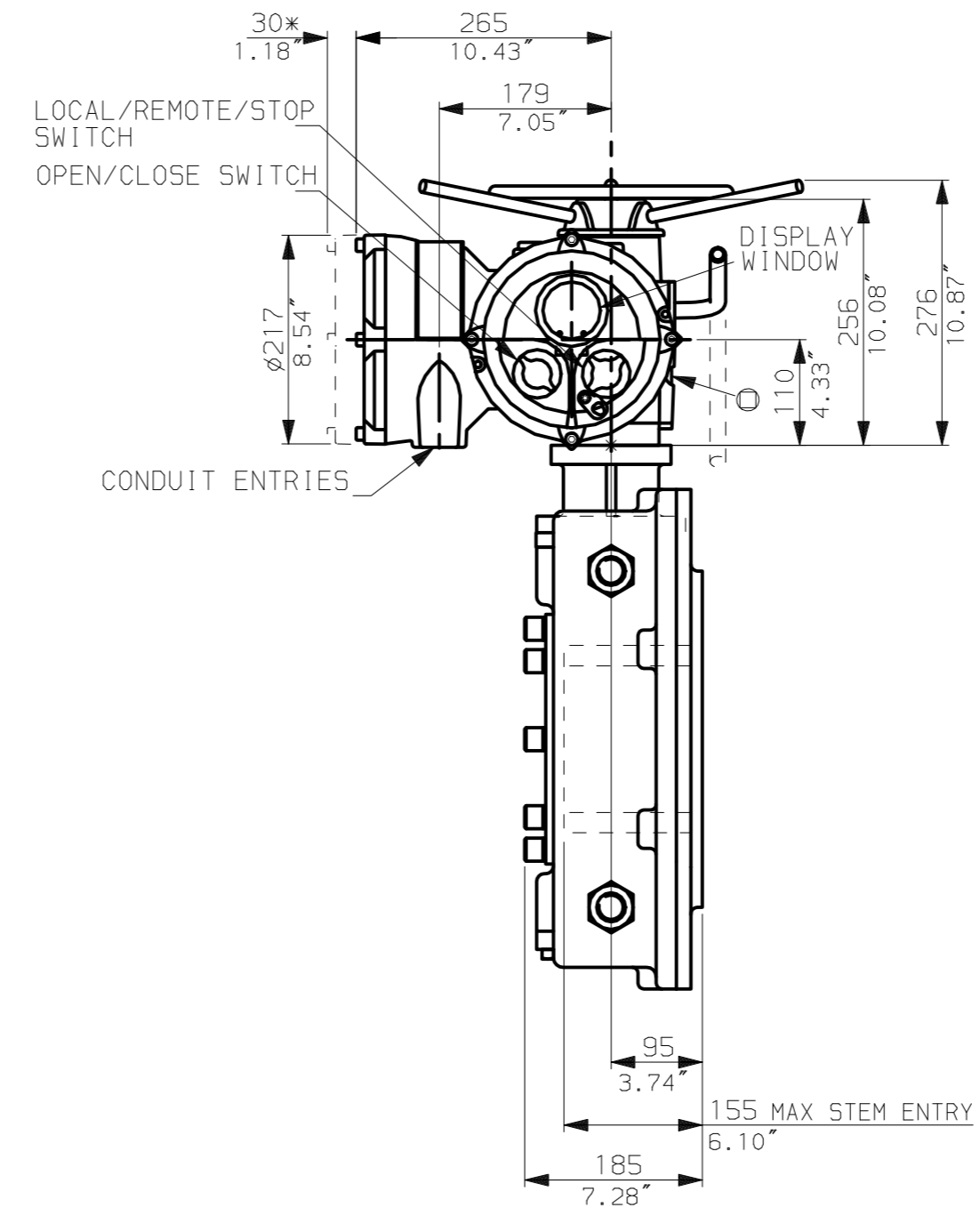
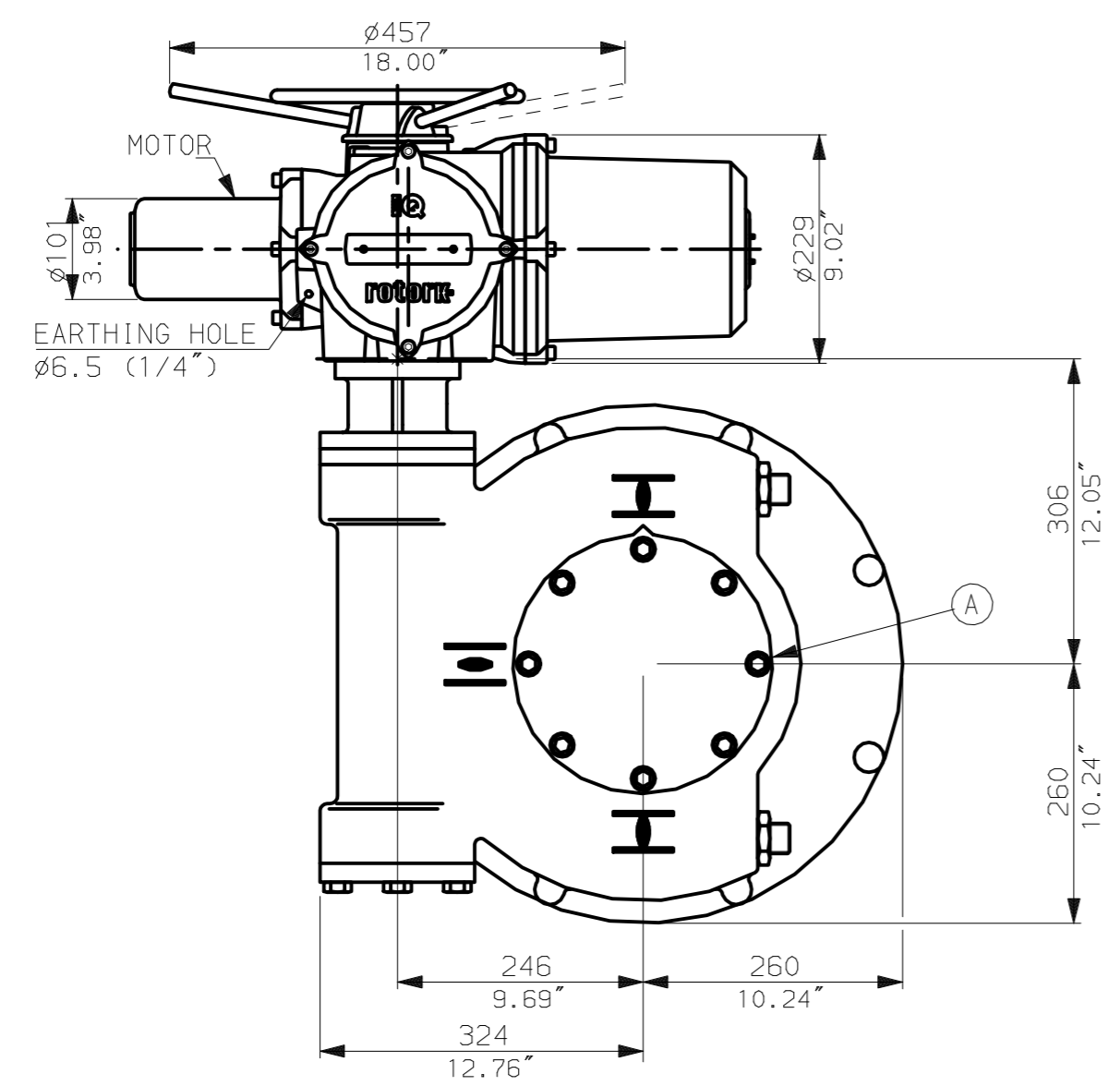


NOTES:  
 : DIMENSIONS WITH '\*' INDICATE COVER REMOVAL ALLOWANCE  
 : NETT WEIGHT = 212kg (466lbs)  
 : = OIL FILLER/DRAIN PLUG  
 : THE INTERFACE PROVIDED FOR MOUNTING THE ACTUATOR OR SECOND STAGE GEARBOX ONTO THE VALVE SHOULD CONFORM TO GOOD ENGINEERING PRACTICES, ENSURING ADEQUATELY TOLERANCED LIMITS FOR PARALLELISM, PERPENDICULARITY AND CONCENTRICITY.

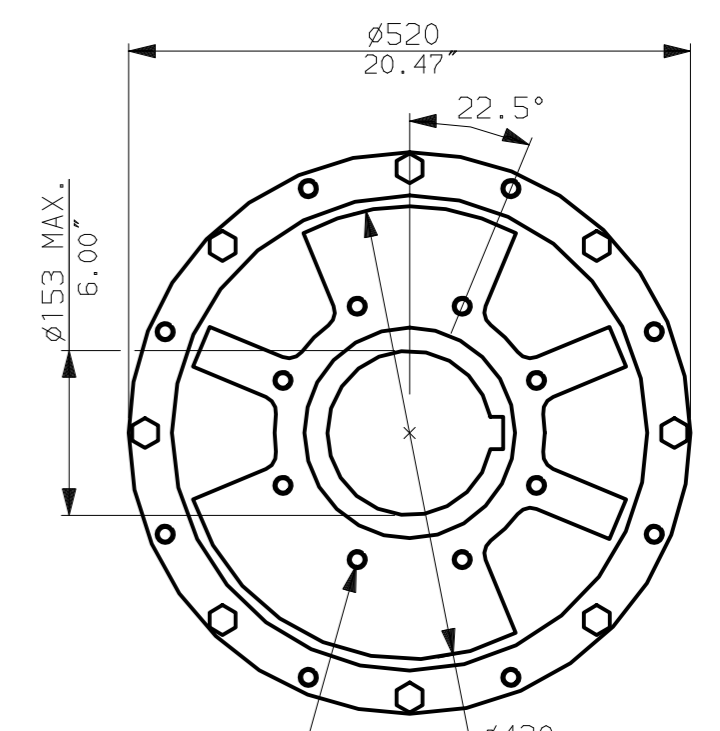
**CONDUIT ENTRIES** (N.T.S)



Nos.1 & 3 TAPPED 1" NPT  
 No.2 TAPPED 1 1/2" NPT  
 STD ALTERNATIVES IF SPECIFIED  
 2 X M25, 1 X M40  
 2 X PG16, 1 X PG29



N.B. KEYWAY POS. CAN BE MOVED 90 OR 180° BY REMOVING 8 SCREWS MARKED (A) AND ROTATING OUTPUT SLEEVE.



**"F" version**

8 HOLES TAPPED M16 x 30 DP  
 EQUI-SPACED AS SHOWN ON A  
 254 PCD (ISO 5211-F25).

**"FA" version**

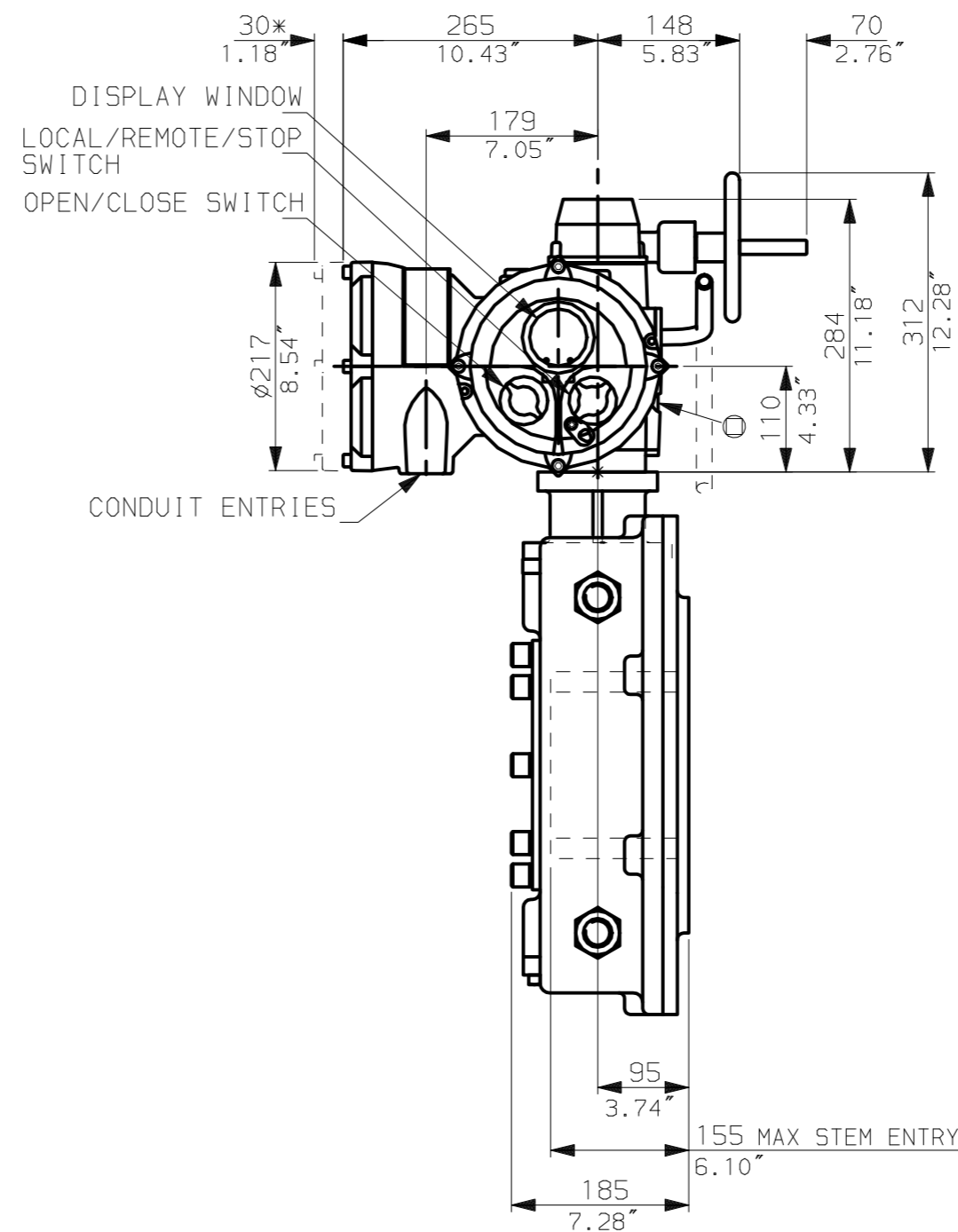
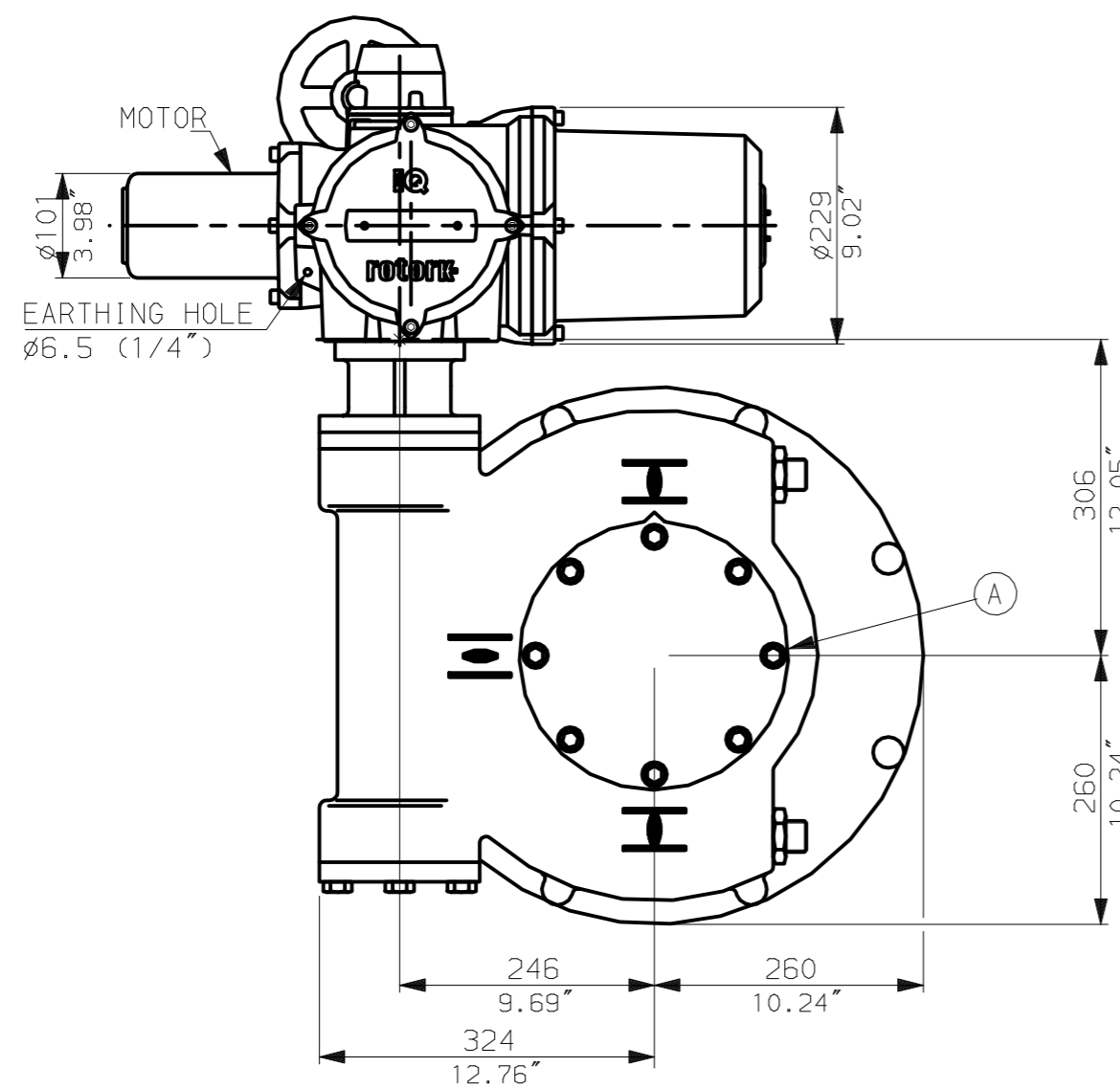
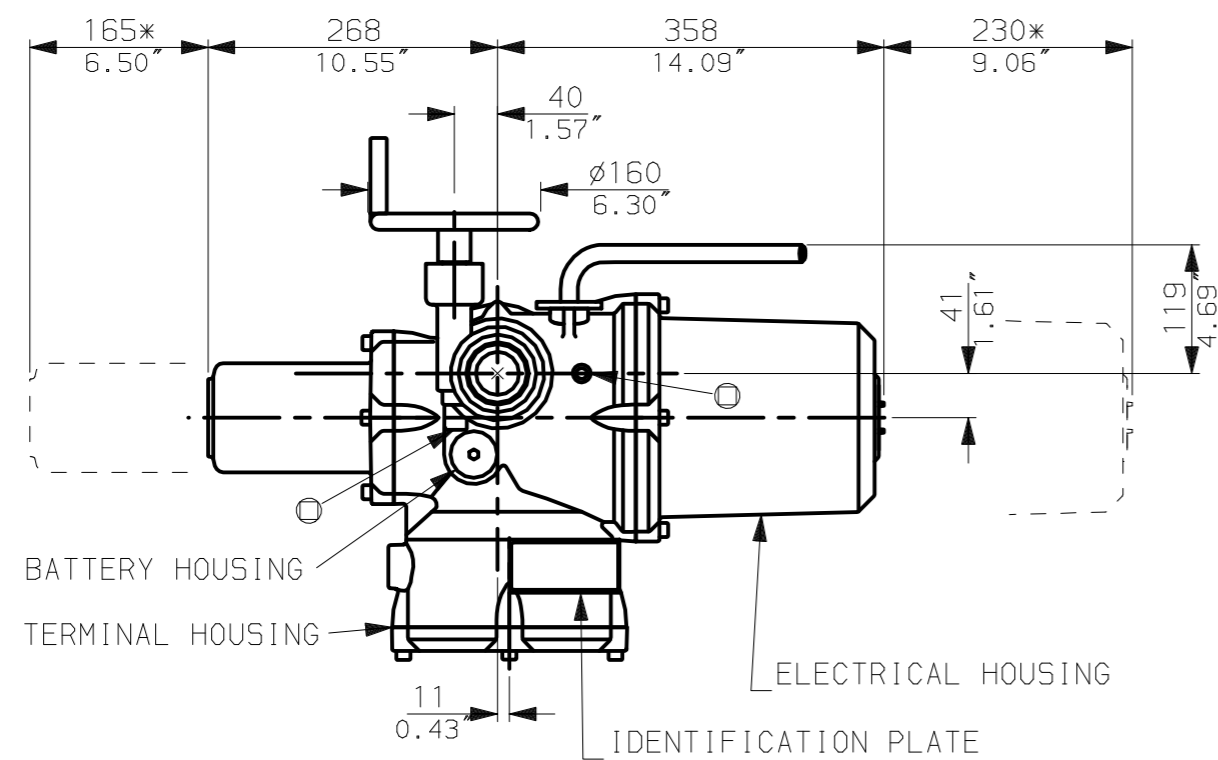
8 HOLES TAPPED 5/8" UNC x 1.18" dp  
 EQUI-SPACED AS SHOWN ON A  
 10" PCD (MSS SP101-FA25).



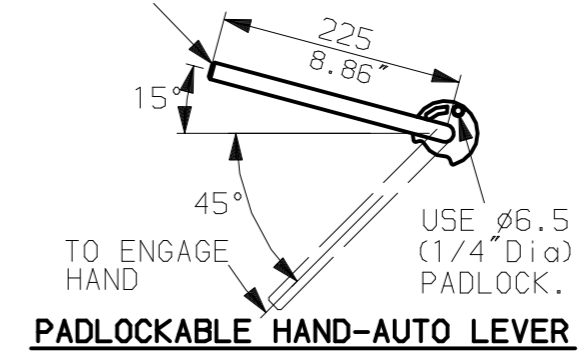
Rotork Controls Ltd.  
 Bath England, BA1 3JQ.  
 (Phone 01225-733200)  
 Rotork Controls Inc.  
 Rochester, NY 14624  
 (Phone 585-328-1550)

Title IQ10, 12, 18, (+IQ512), LTHW, IW (MOW) 8 (+82+85),		
STANDARD DIMENSIONAL DATA		
Drawn CAD	Checked PRE	Ref Data Sheet
Date 150605	Job No IQ1LTHW_IWB	

02	4.69" corrected from 6.50"
01 Issue	First Issue.
Scale	1:7 THIRD ANGLE PROJECTION
Drawing Number	IQ1LTHW_IWB



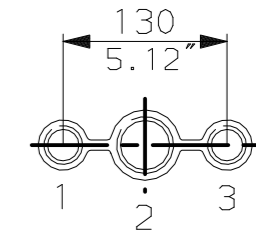
LEVER POSITION IN AUTO.  
LEVER AUTOMATICALLY RETURNS  
TO THIS POSITION WHEN RELEASED



**PADLOCKABLE HAND-AUTO LEVER**

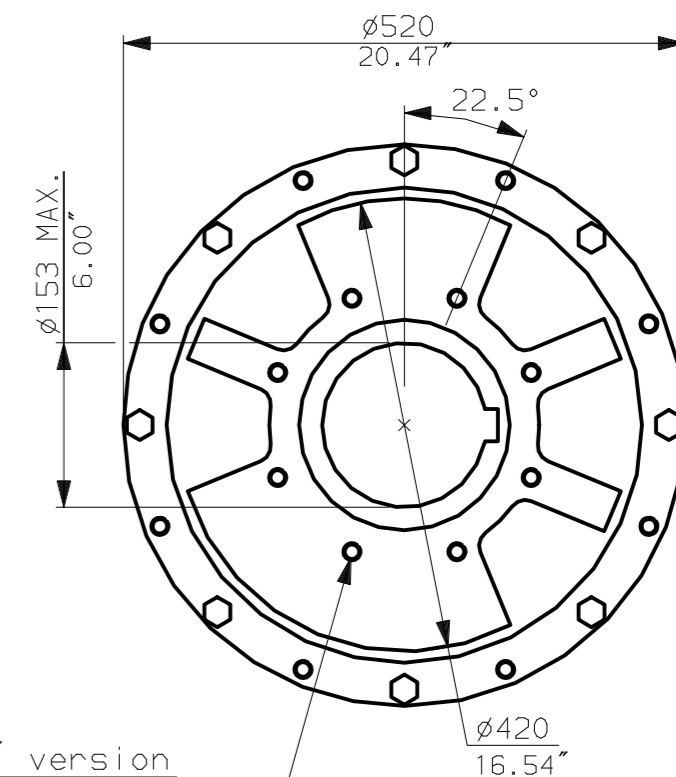
**NOTES:**  
:DIMENSIONS WITH '\*' INDICATE COVER REMOVAL ALLOWANCE  
:NETT WEIGHT = 212kg (466lbs)  
:⊙ = OIL FILLER/DRAIN PLUG  
:THE INTERFACE PROVIDED FOR MOUNTING THE ACTUATOR OR SECOND STAGE GEARBOX ONTO THE VALVE SHOULD CONFORM TO GOOD ENGINEERING PRACTICES, ENSURING ADEQUATELY TOLERANCED LIMITS FOR PARALLELISM, PERPENDICULARITY AND CONCENTRICITY.

**CONDUIT ENTRIES (N.T.S)**



Nos.1 & 3 TAPPED 1" NPT  
No.2 TAPPED 1 1/2" NPT  
STD ALTERNATIVES IF SPECIFIED  
2 X M25, 1 X M40  
2 X PG16, 1 X PG29

N.B. KEYWAY POS. CAN BE MOVED 90 OR 180° BY REMOVING 8 SCREWS MARKED (A) AND ROTATING OUTPUT SLEEVE.



**"F" version**

8 HOLES TAPPED M16 x 30 DP  
EQUI-SPACED AS SHOWN ON A  
254 PCD (ISO 5211-F25).

**"FA" version**

8 HOLES TAPPED 5/8"UNCx1.18"dp  
EQUI-SPACED AS SHOWN ON A  
10" PCD (MSS SP101-FA25).



Rotork Controls Ltd.  
Bath England, BA1 3JQ.  
(Phone 01225-733200)  
Rotork Controls Inc.  
Rochester, NY 14624  
(Phone 585-328-1550)

Title IQ10, 12, 18, (+IQ512), SHW, IW (MOW) 8 (+82+85),		
STANDARD DIMENSIONAL DATA		
Drawn CAD	Checked PRE	Ref Data Sheet
Date 150605	Job No IQ1SHW_IW8	

02	4.69" corrected from 6.50"
01	First Issue.
Scale	1:7 THIRD ANGLE PROJECTION
Drawing Number	IQ1SHW_IW8