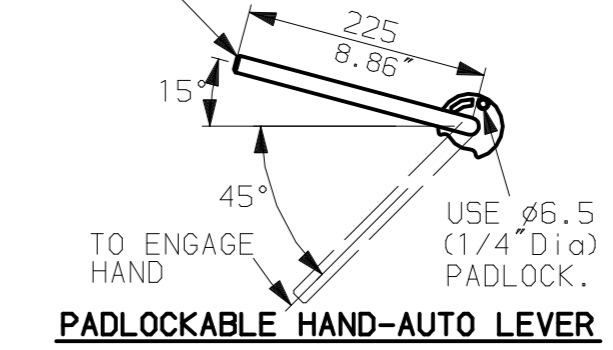
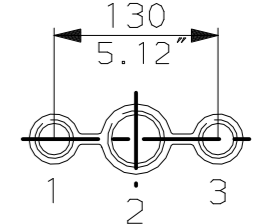


LEVER POSITION IN AUTO.  
LEVER AUTOMATICALLY RETURNS  
TO THIS POSITION WHEN RELEASED

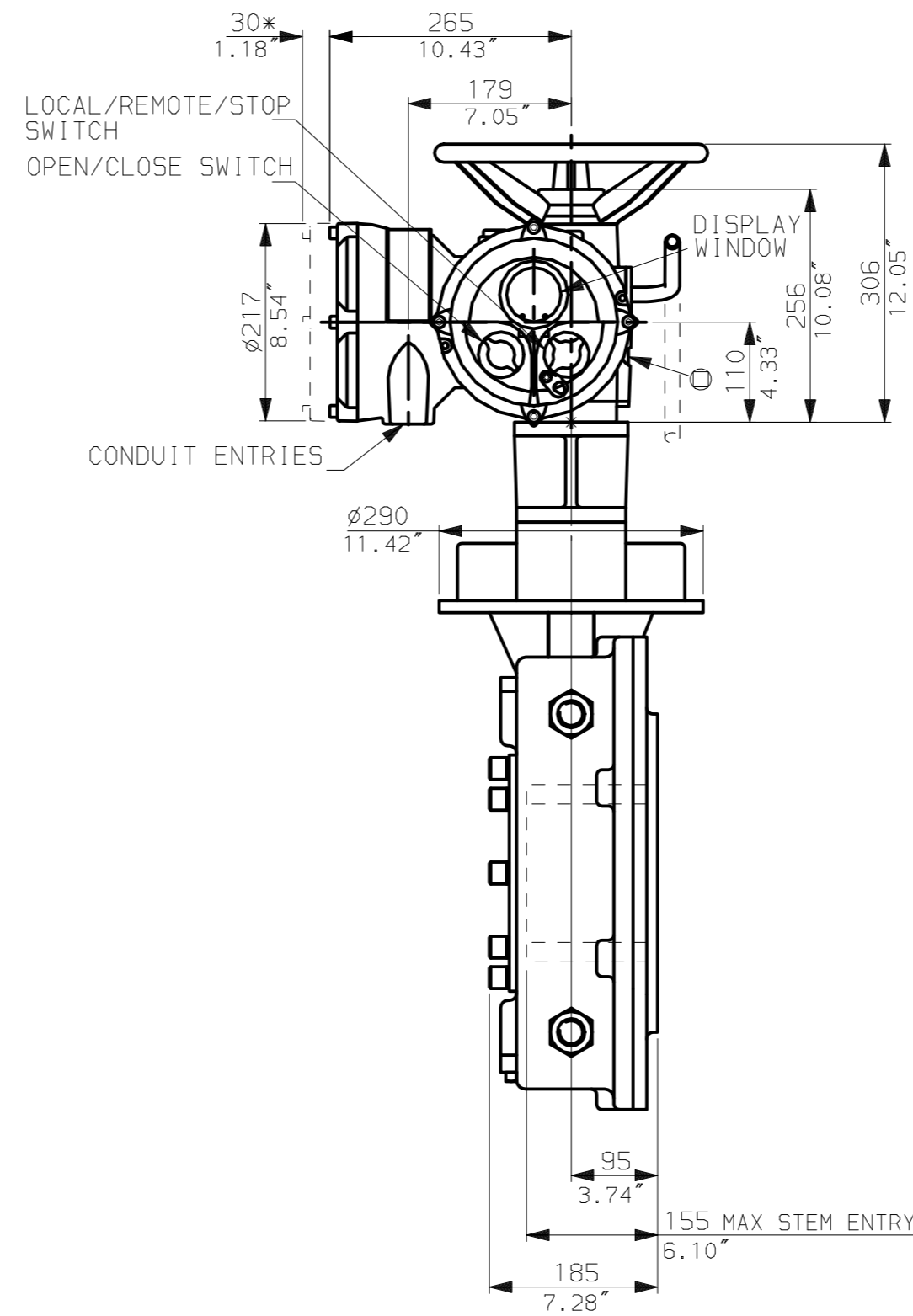
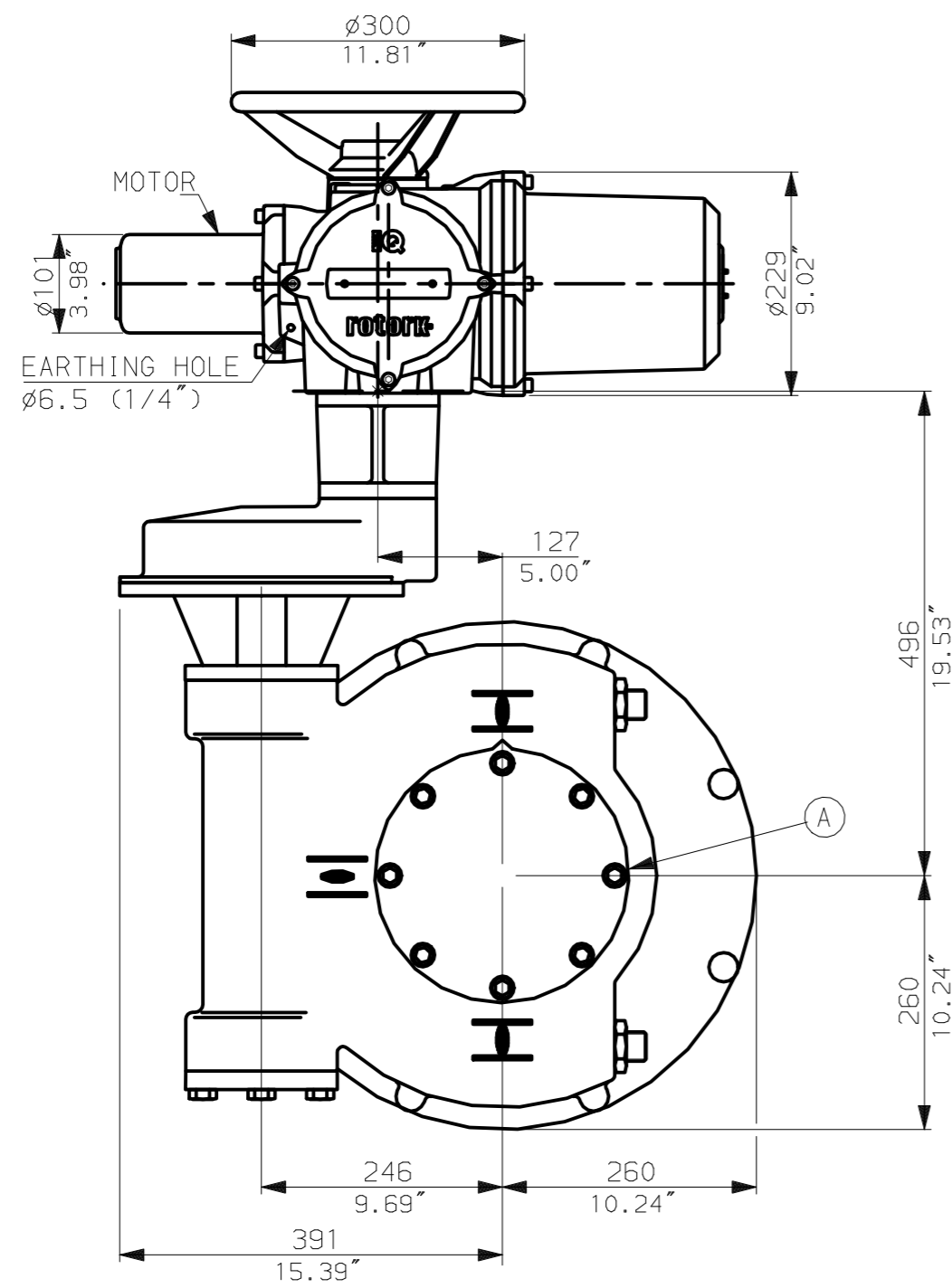


**NOTES:**  
: DIMENSIONS WITH '\*' INDICATE COVER REMOVAL ALLOWANCE  
: NETT WEIGHT = 244kg (537lbs)  
:  $\phi$  = OIL FILLER/DRAIN PLUG  
: THE INTERFACE PROVIDED FOR MOUNTING THE ACTUATOR OR SECOND STAGE GEARBOX ONTO THE VALVE SHOULD CONFORM TO GOOD ENGINEERING PRACTICES, ENSURING ADEQUATELY TOLERANCED LIMITS FOR PARALLELISM, PERPENDICULARITY AND CONCENTRICITY.

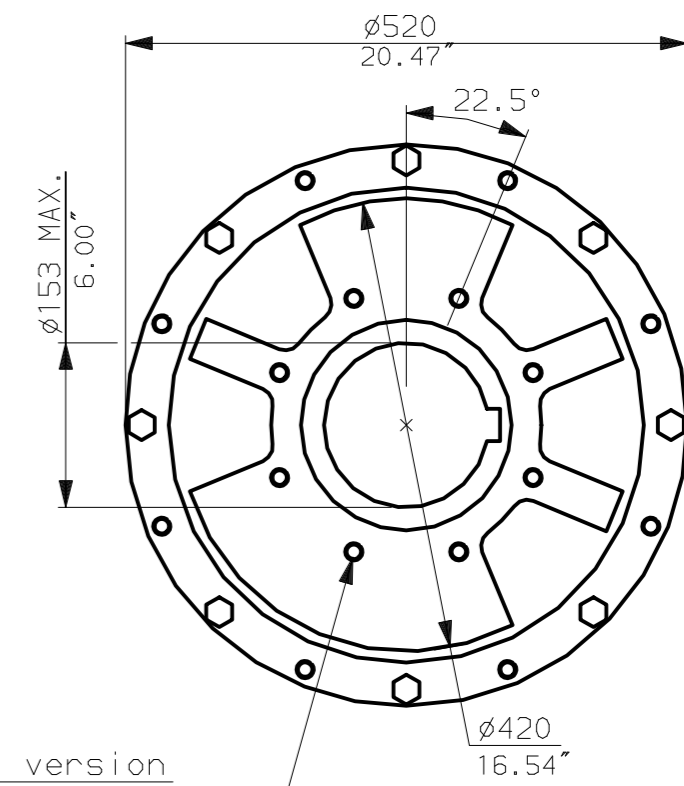
**CONDUIT ENTRIES** (N.T.S)



Nos.1 & 3 TAPPED 1" NPT  
No.2 TAPPED 1 1/2" NPT  
STD ALTERNATIVES IF SPECIFIED  
2 X M25, 1 X M40  
2 X PG16, 1 X PG29



N.B. KEYWAY POS. CAN BE MOVED 90 OR 180° BY REMOVING 8 SCREWS MARKED (A) AND ROTATING OUTPUT SLEEVE.



"F" version  
8 HOLES TAPPED M16 x 30 DP  
EQUI-SPACED AS SHOWN ON A  
254 PCD (ISO 5211-F25).

"FA" version  
8 HOLES TAPPED 5/8" UNC x 1.18" dp  
EQUI-SPACED AS SHOWN ON A  
10" PCD (MSS SP101-FA25).

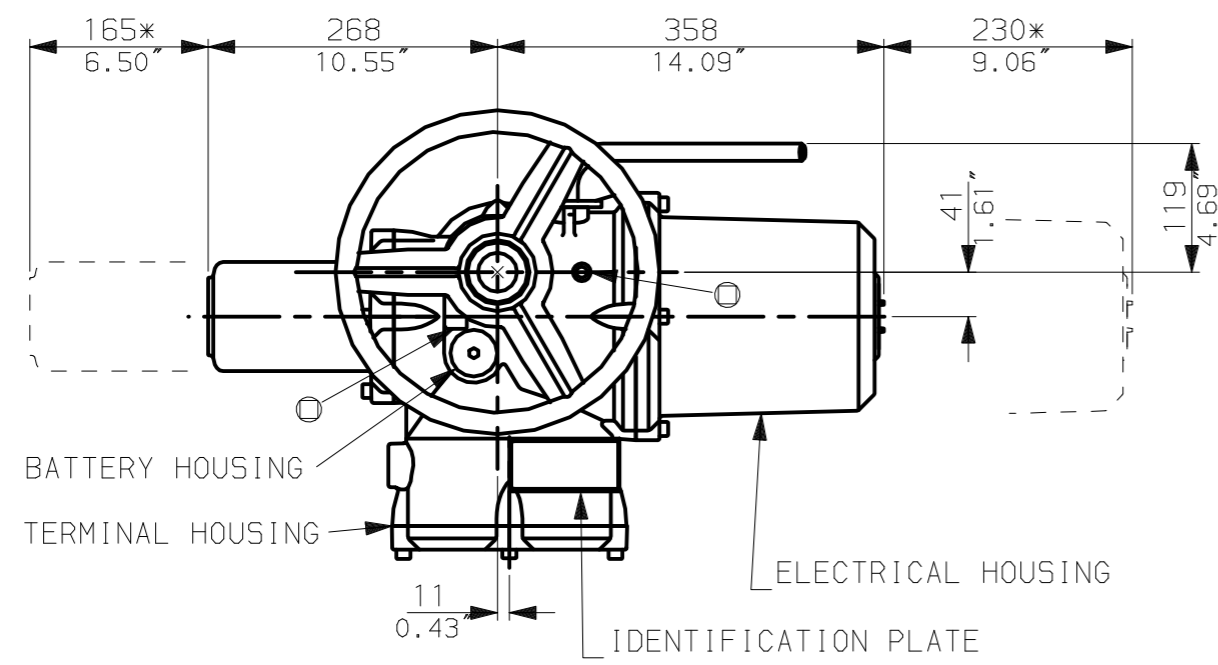
**NOTE:**  
Gearbox is shown with LOW Ratio Input Reducer.  
(ie Ratios 120, 180, 240, 360)  
See Data Sheet with IW8Rh for HIGH ratio option.



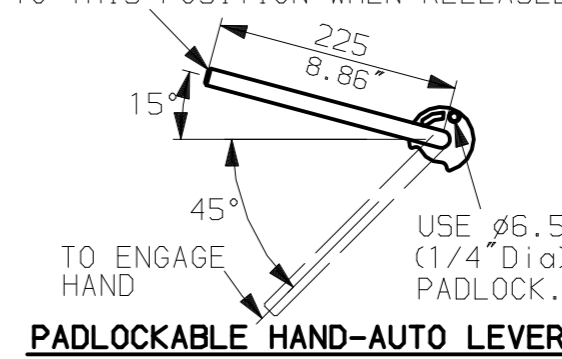
Rotork Controls Ltd.  
Bath England, BA1 3JQ.  
(Phone 01225-733200)  
Rotork Controls Inc.  
Rochester, NY 14624  
(Phone 585-328-1550)

Title IQ10, 12, 18, (+IQ512), THW, IW (MOW) 8 (+82+85) RL		
STANDARD DIMENSIONAL DATA		
Drawn CAD	Checked PRE	Ref Data Sheet
Date 150605	Job No IQ1THW_IW8RL	

02	4.69" corrected from 6.50"
01	First Issue.
Scale	1:7 THIRD ANGLE PROJECTION
Drawing Number	IQ1THW_IW8RL

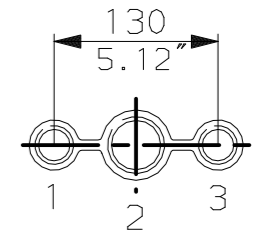


LEVER POSITION IN AUTO.  
LEVER AUTOMATICALLY RETURNS  
TO THIS POSITION WHEN RELEASED

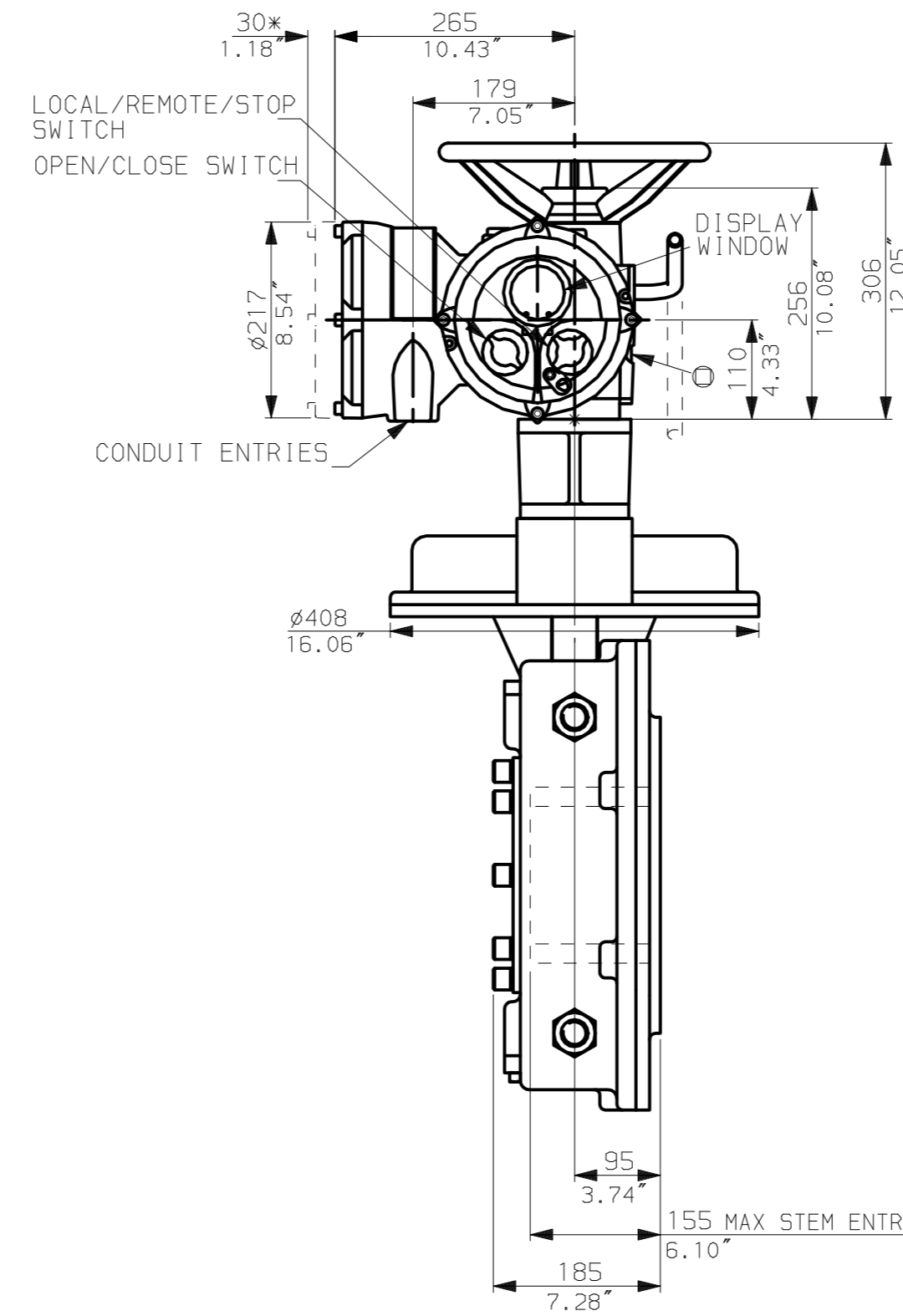
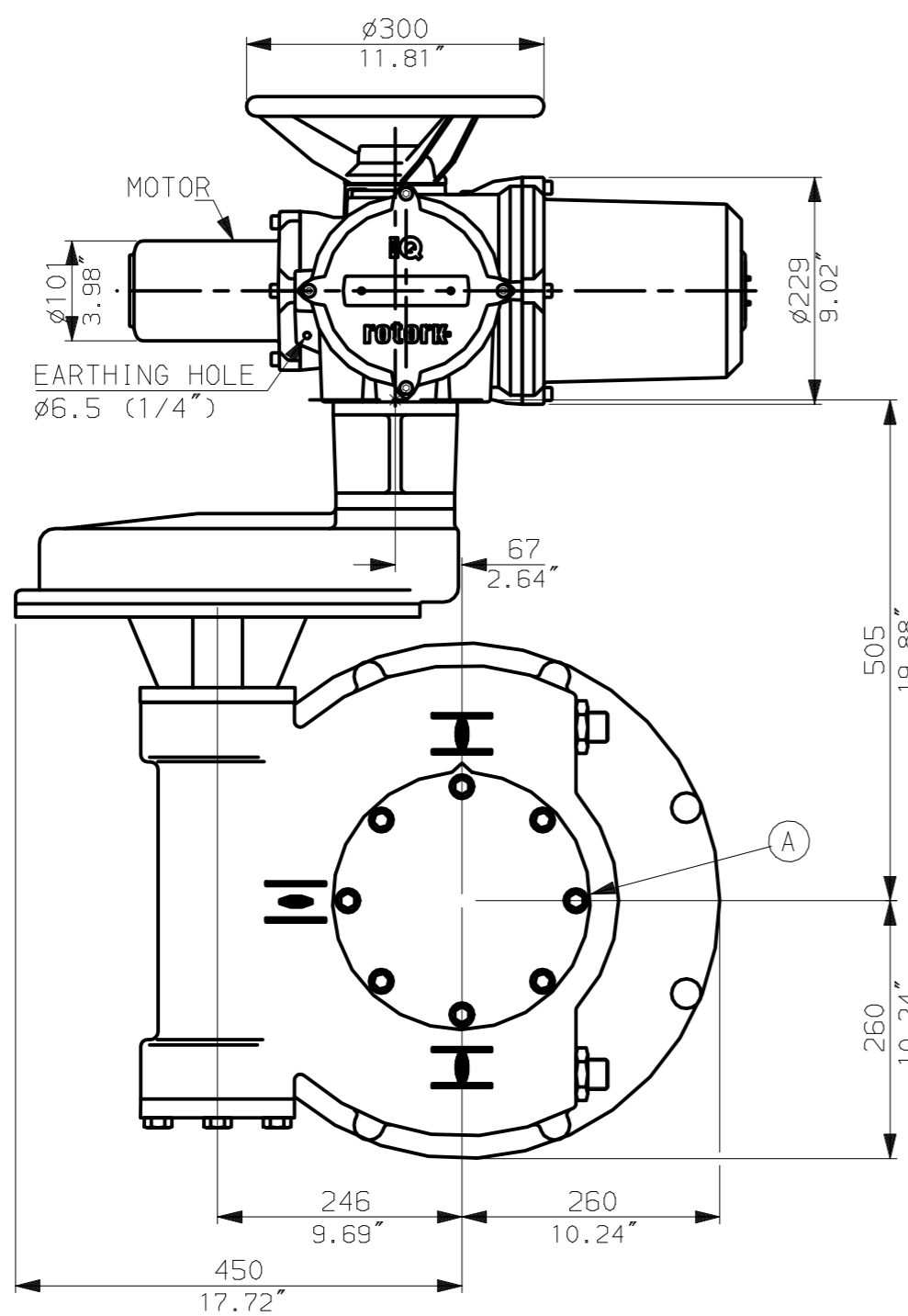


NOTES:  
: DIMENSIONS WITH '\*' INDICATE COVER REMOVAL ALLOWANCE  
: NETT WEIGHT = 254kg (559lbs)  
:  $\odot$  = OIL FILLER/DRAIN PLUG  
: THE INTERFACE PROVIDED FOR MOUNTING THE ACTUATOR OR SECOND STAGE GEARBOX ONTO THE VALVE SHOULD CONFORM TO GOOD ENGINEERING PRACTICES, ENSURING ADEQUATELY TOLERANCED LIMITS FOR PARALLELISM, PERPENDICULARITY AND CONCENTRICITY.

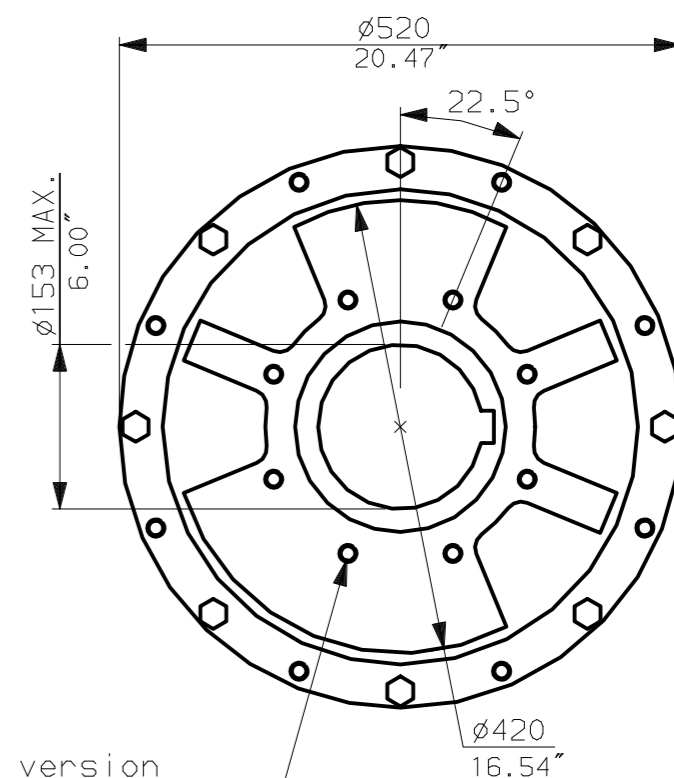
**CONDUIT ENTRIES** (N.T.S)



Nos.1 & 3 TAPPED 1" NPT  
No.2 TAPPED 1 1/2" NPT  
STD ALTERNATIVES IF SPECIFIED  
2 X M25, 1 X M40  
2 X PG16, 1 X PG29



N.B. KEYWAY POS. CAN BE MOVED 90 OR 180° BY REMOVING 8 SCREWS MARKED (A) AND ROTATING OUTPUT SLEEVE.



"F" version  
8 HOLES TAPPED M16 x 30 DP  
EQUI-SPACED AS SHOWN ON A  
254 PCD (ISO 5211-F25).

"FA" version  
8 HOLES TAPPED 5/8" UNC x 1.18" dp  
EQUI-SPACED AS SHOWN ON A  
10" PCD (MSS SP101-FA25).

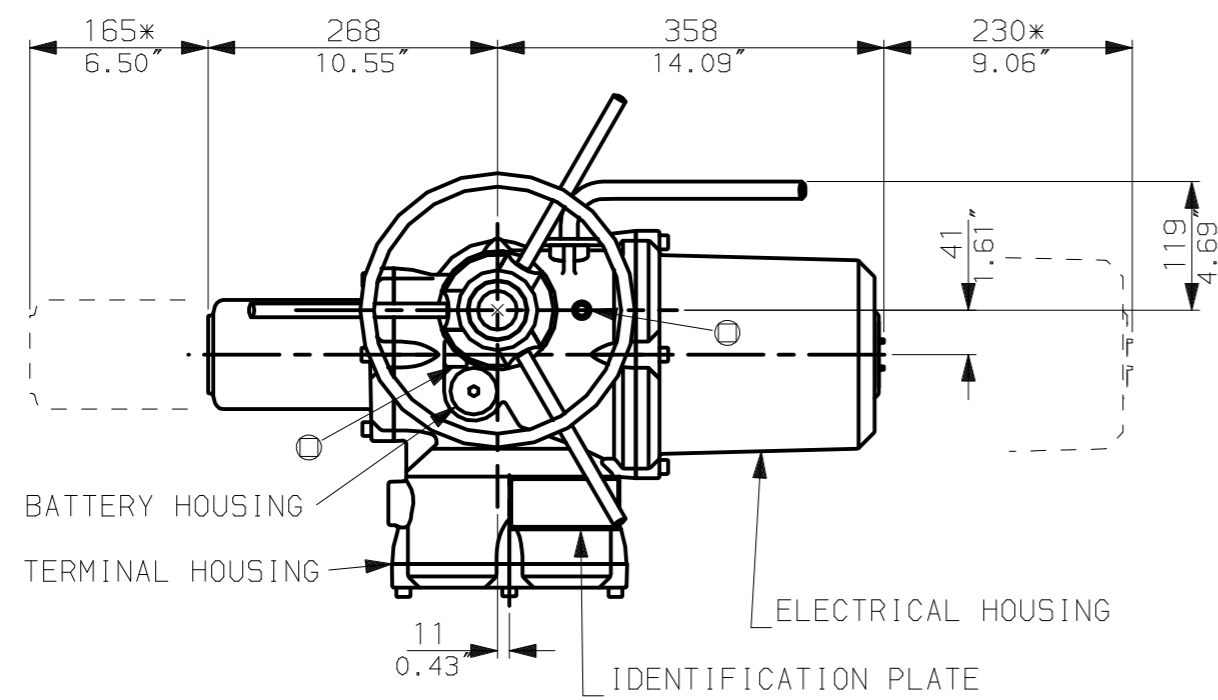
NOTE:  
Gearbox is shown with HIGH Ratio Input Reducer.  
(ie Ratios 480, 540, 720)  
See Data Sheet with IW8RL for LOW ratio option.

**rotork**  
www.rotork.com

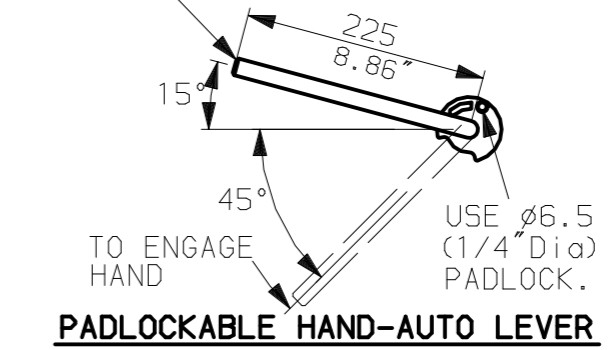
Rotork Controls Ltd.  
Bath England, BA1 3JQ.  
(Phone 01225-733200)  
Rotork Controls Inc.  
Rochester, NY 14624  
(Phone 585-328-1550)

Title IQ10, 12, 18, (+IQ512), THW, IW (MOW) 8 (+82+85) Rh	
STANDARD DIMENSIONAL DATA	
Drawn CAD	Checked PRE Ref Data Sheet
Date 150605	Job No IQ1THW_IW8Rh

02	4.69" corrected from 6.50"
01	First Issue.
Scale	1:7 THIRD ANGLE PROJECTION
Drawing Number	IQ1THW_IW8Rh

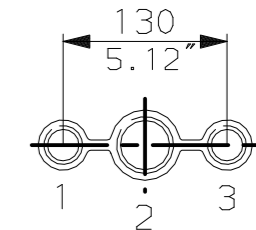


LEVER POSITION IN AUTO.  
LEVER AUTOMATICALLY RETURNS  
TO THIS POSITION WHEN RELEASED

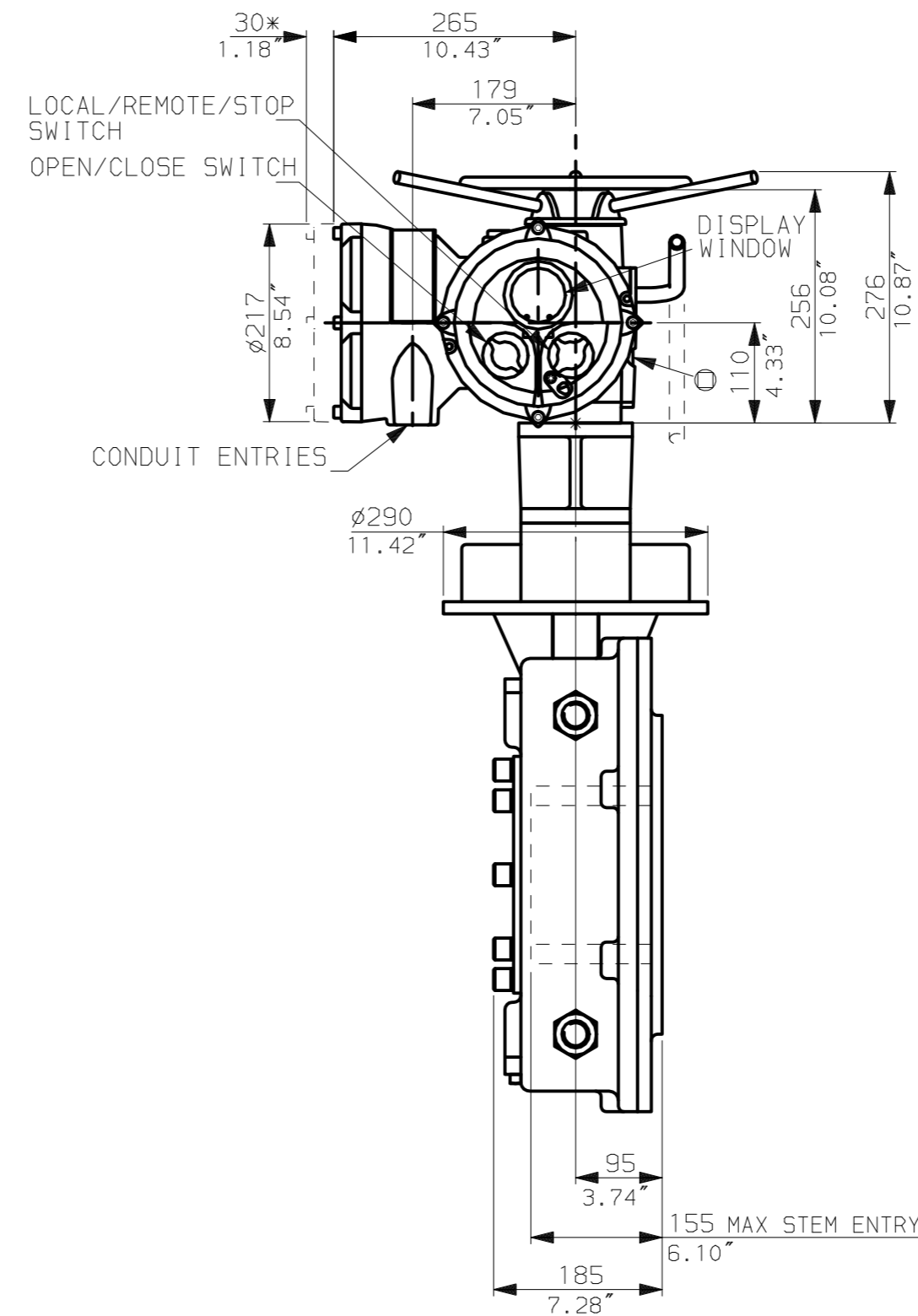
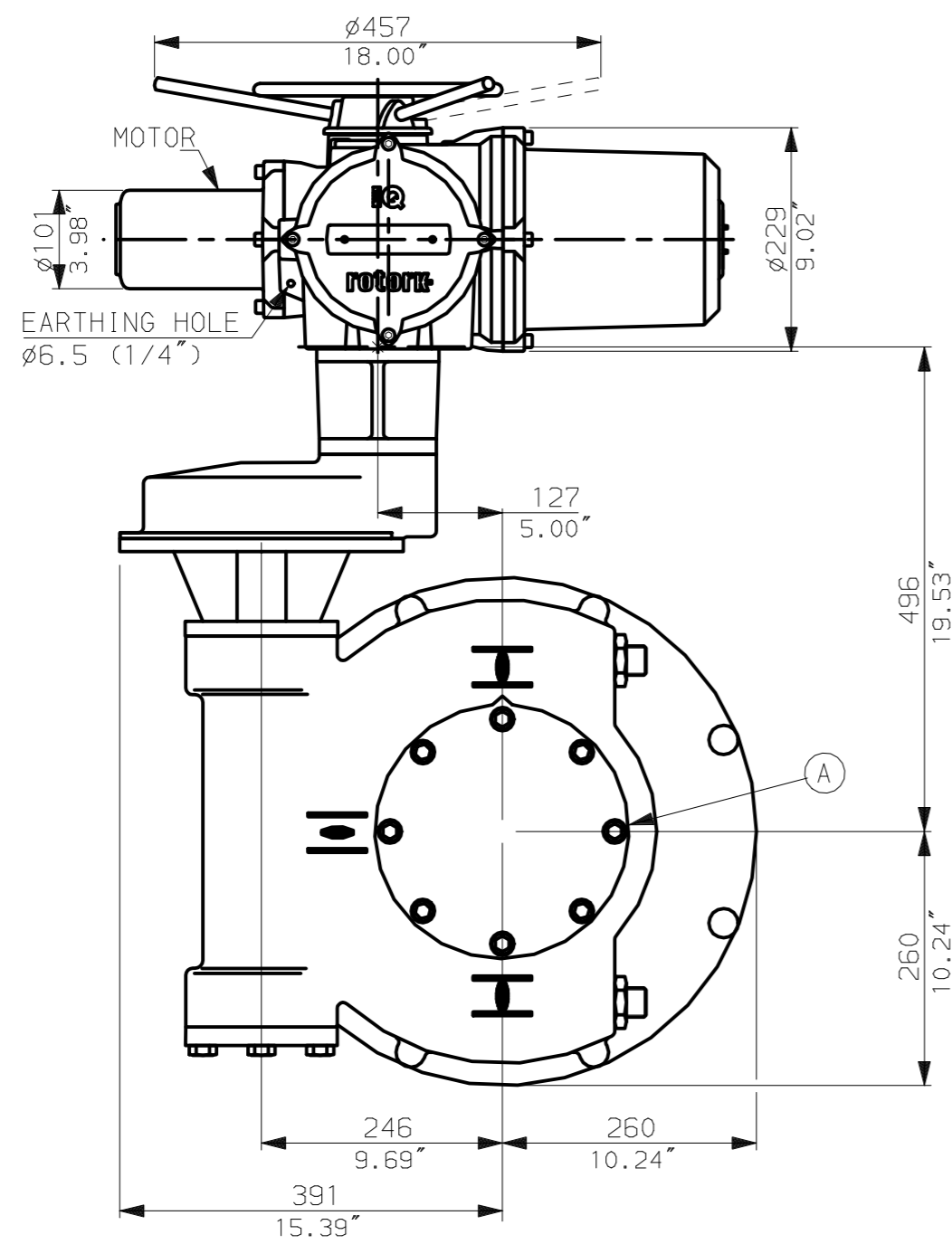


NOTES:  
: DIMENSIONS WITH '\*' INDICATE COVER REMOVAL ALLOWANCE  
: NETT WEIGHT = 244kg (537lbs)  
:  $\odot$  = OIL FILLER/DRAIN PLUG  
: THE INTERFACE PROVIDED FOR MOUNTING THE ACTUATOR OR SECOND STAGE GEARBOX ONTO THE VALVE SHOULD CONFORM TO GOOD ENGINEERING PRACTICES, ENSURING ADEQUATELY TOLERANCED LIMITS FOR PARALLELISM, PERPENDICULARITY AND CONCENTRICITY.

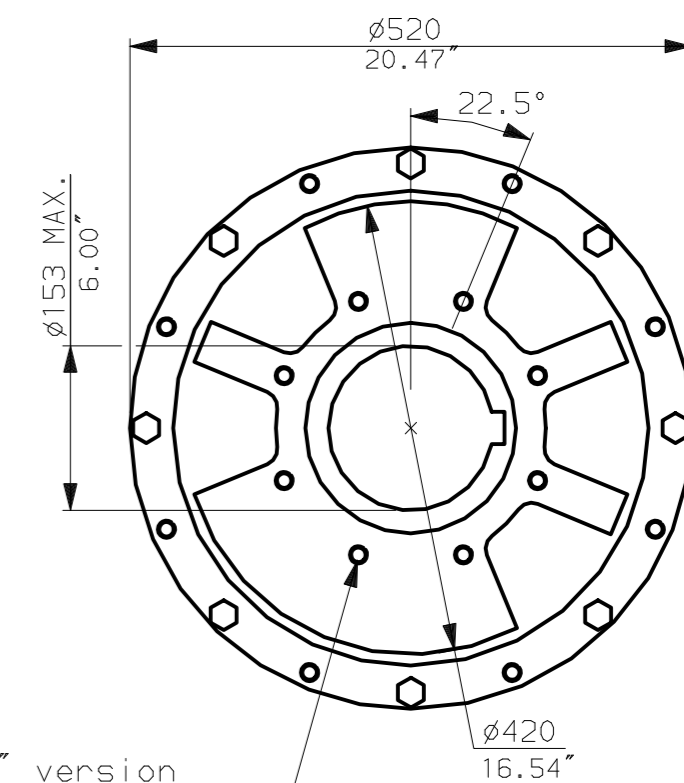
**CONDUIT ENTRIES** (N.T.S)



Nos.1 & 3 TAPPED 1" NPT  
No.2 TAPPED 1 1/2" NPT  
STD ALTERNATIVES IF SPECIFIED  
2 X M25, 1 X M40  
2 X PG16, 1 X PG29



N.B. KEYWAY POS. CAN BE MOVED 90 OR 180° BY REMOVING 8 SCREWS MARKED (A) AND ROTATING OUTPUT SLEEVE.



"F" version  
8 HOLES TAPPED M16 x 30 DP  
EQUI-SPACED AS SHOWN ON A  
254 PCD (ISO 5211-F25).

"FA" version  
8 HOLES TAPPED 5/8" UNC x 1.18" dp  
EQUI-SPACED AS SHOWN ON A  
10" PCD (MSS SP101-FA25).

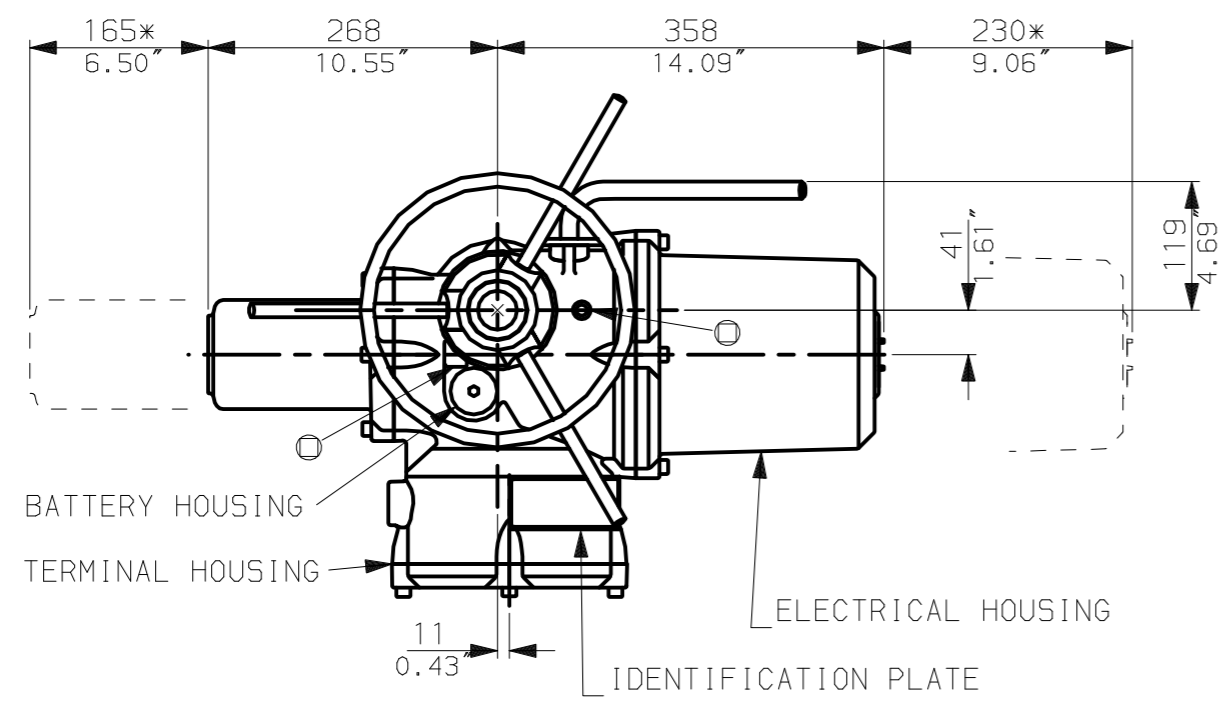
NOTE:  
Gearbox is shown with LOW Ratio Input Reducer.  
(ie Ratios 120, 180, 240, 360)  
See Data Sheet with IW8Rh for HIGH ratio option.

**rotork**  
www.rotork.com

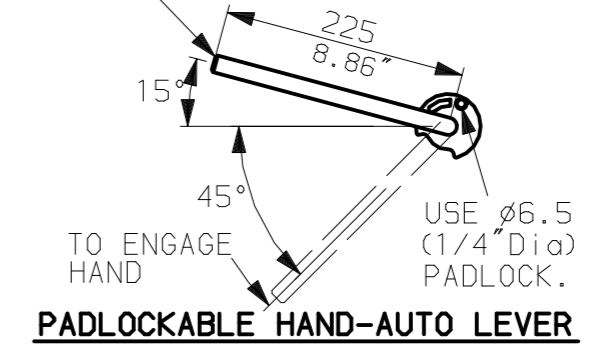
Rotork Controls Ltd.  
Bath England, BA1 3JQ.  
(Phone 01225-733200)  
Rotork Controls Inc.  
Rochester, NY 14624  
(Phone 585-328-1550)

Title IQ10,12,18, (+I0512), LTHW, IW (MOW) 8 (+82+85) RL,		
STANDARD DIMENSIONAL DATA		
Drawn CAD	Checked PRE	Ref Data Sheet
Date 150605	Job No IQ1LTHW_IW8R	

02	4.69" corrected from 6.50"
01	First Issue.
Scale	1:7 THIRD ANGLE PROJECTION
Drawing Number	IQ1LTHW_IW8R

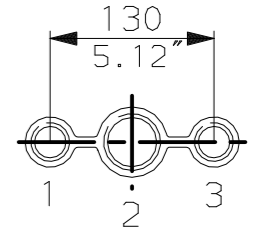


LEVER POSITION IN AUTO.  
LEVER AUTOMATICALLY RETURNS  
TO THIS POSITION WHEN RELEASED

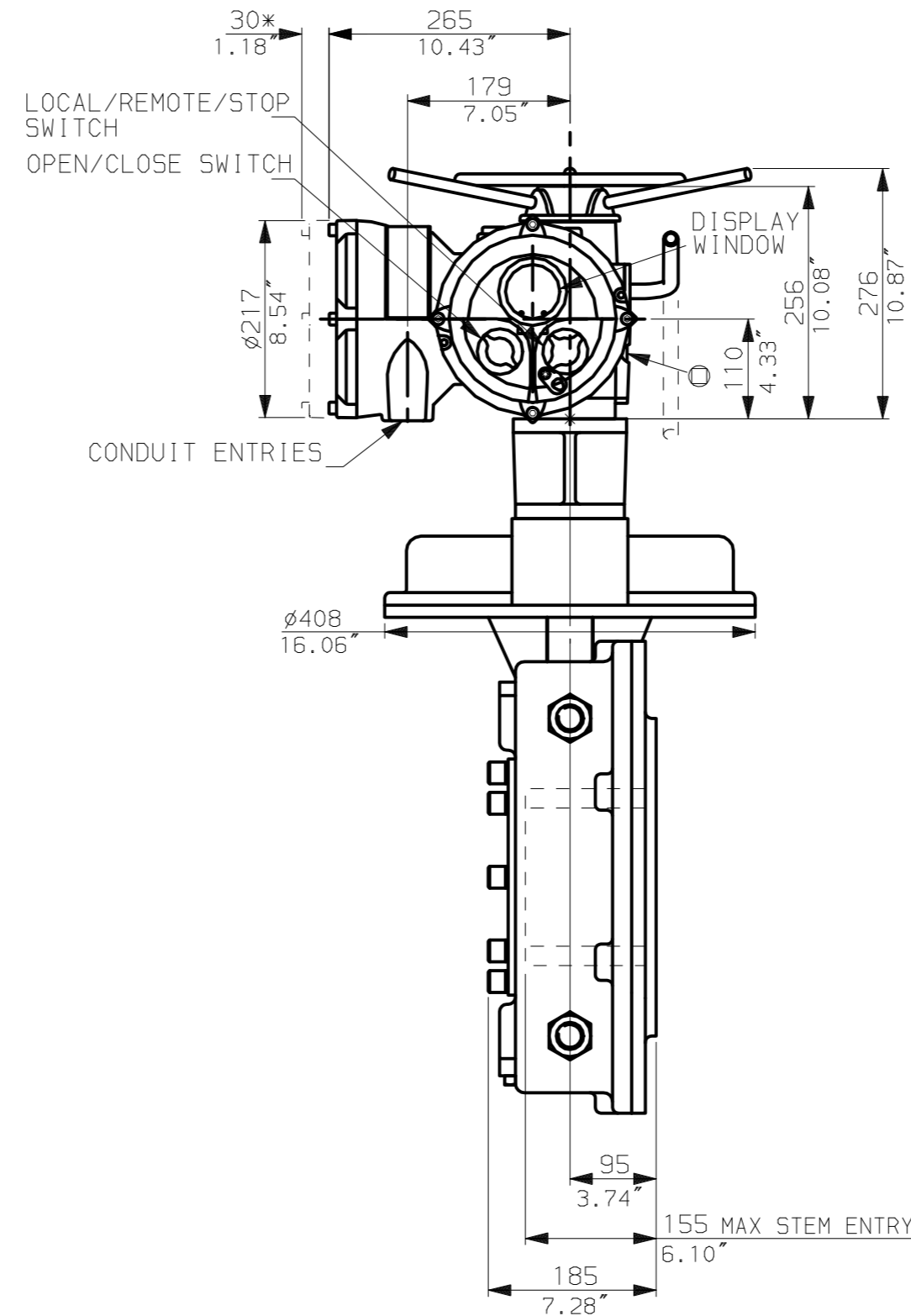
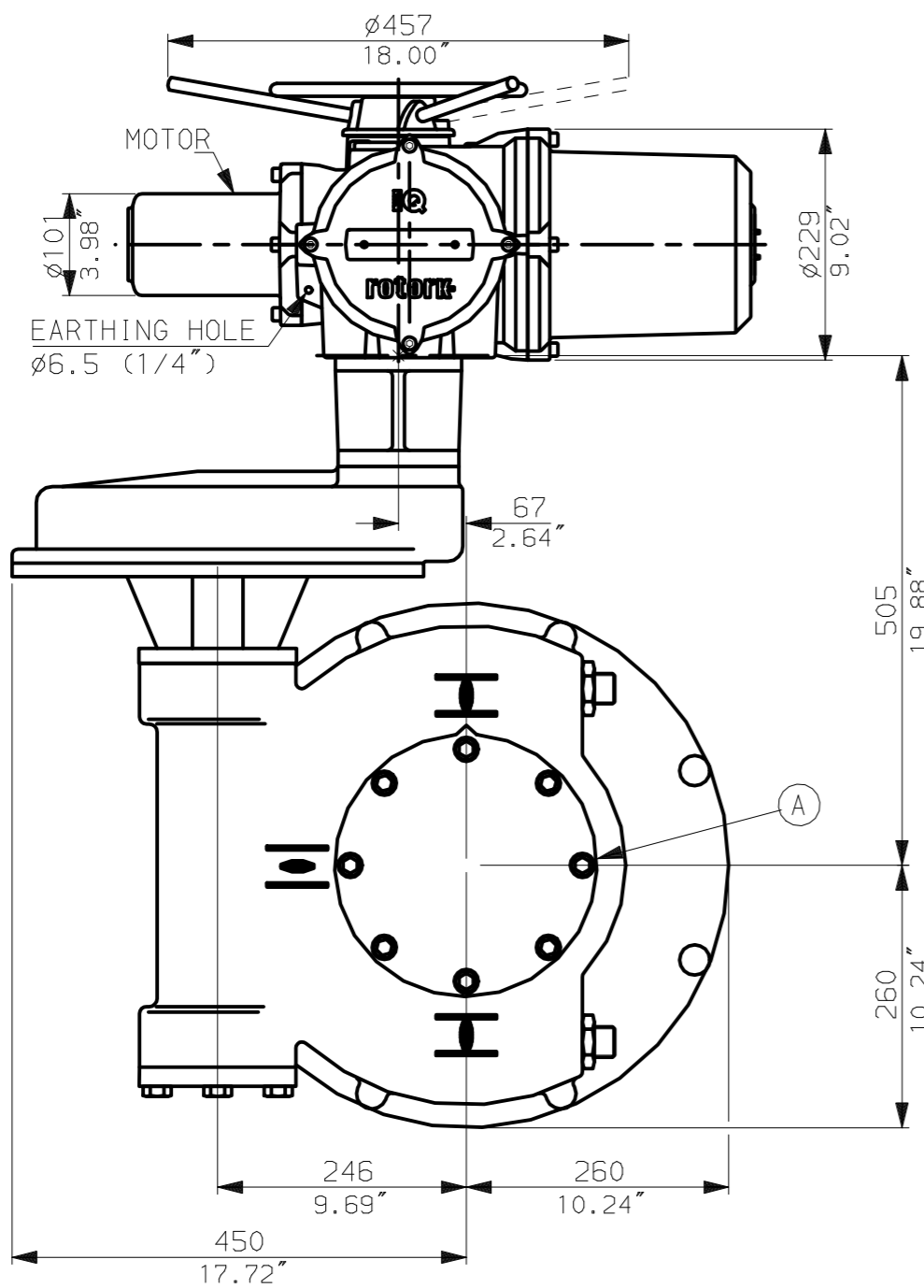


NOTES:  
: DIMENSIONS WITH '\*' INDICATE COVER REMOVAL ALLOWANCE  
: NETT WEIGHT = 254kg (559lbs)  
:  $\phi$  = OIL FILLER/DRAIN PLUG  
: THE INTERFACE PROVIDED FOR MOUNTING THE ACTUATOR OR SECOND STAGE GEARBOX ONTO THE VALVE SHOULD CONFORM TO GOOD ENGINEERING PRACTICES, ENSURING ADEQUATELY TOLERANCED LIMITS FOR PARALLELISM, PERPENDICULARITY AND CONCENTRICITY.

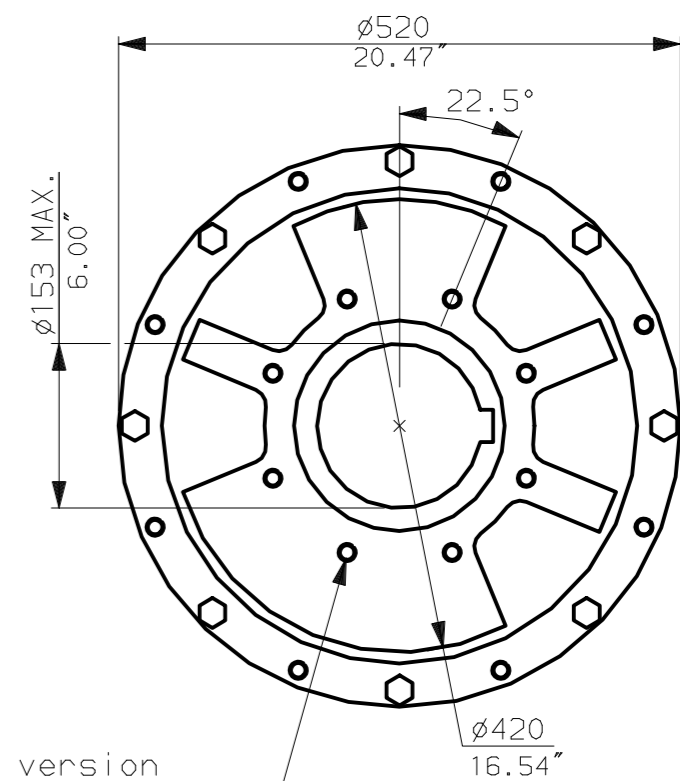
**CONDUIT ENTRIES** (N.T.S)



Nos.1 & 3 TAPPED 1" NPT  
No.2 TAPPED 1 1/2" NPT  
STD ALTERNATIVES IF SPECIFIED  
2 X M25, 1 X M40  
2 X PG16, 1 X PG29



N.B. KEYWAY POS. CAN BE MOVED 90 OR 180° BY REMOVING 8 SCREWS MARKED (A) AND ROTATING OUTPUT SLEEVE.



"F" version  
8 HOLES TAPPED M16 x 30 DP  
EQUI-SPACED AS SHOWN ON A  
254 PCD (ISO 5211-F25).

"FA" version  
8 HOLES TAPPED 5/8" UNC x 1.18" dp  
EQUI-SPACED AS SHOWN ON A  
10" PCD (MSS SP101-FA25).

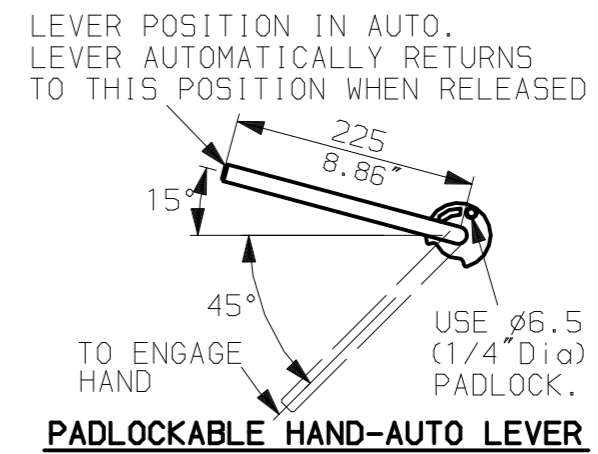
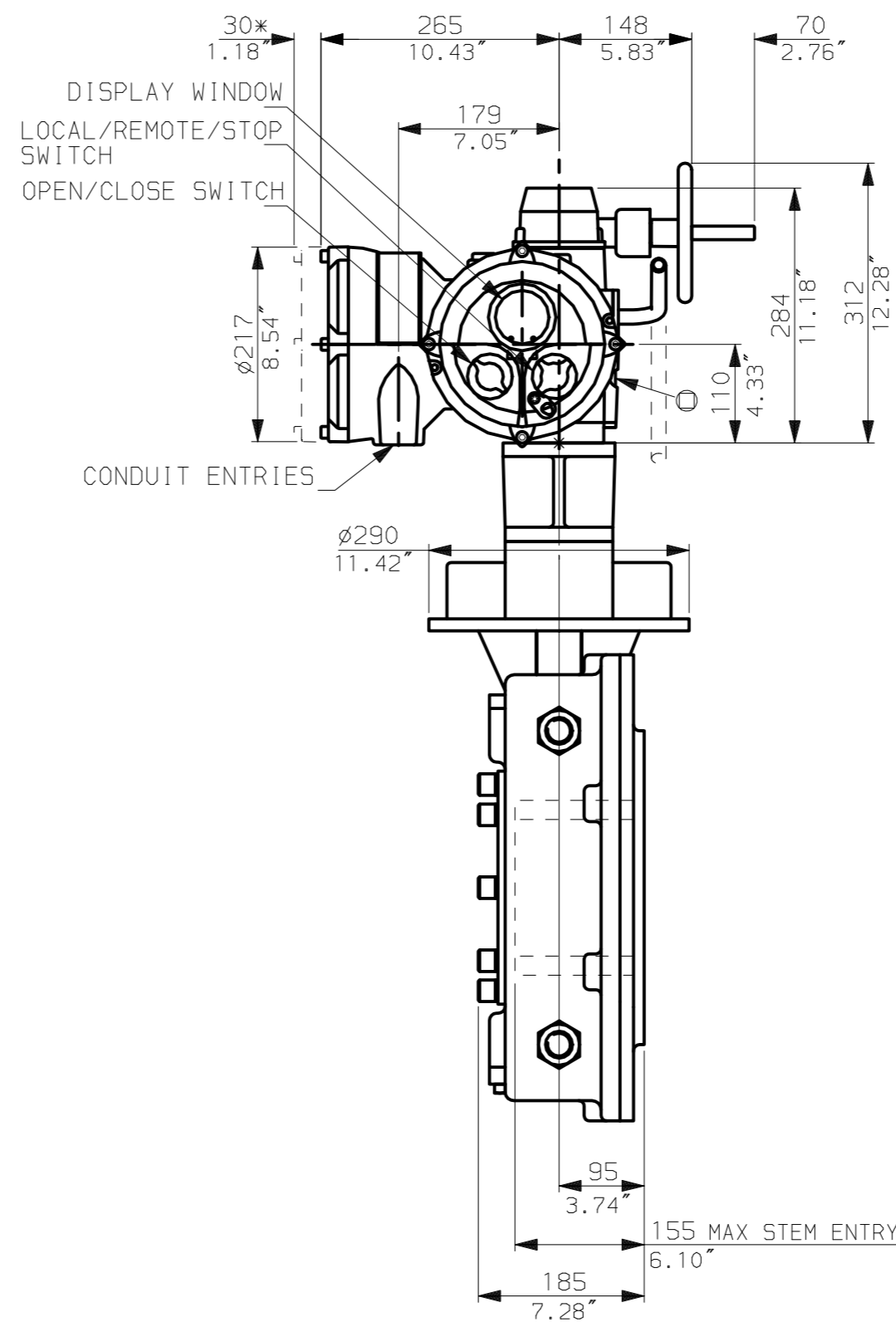
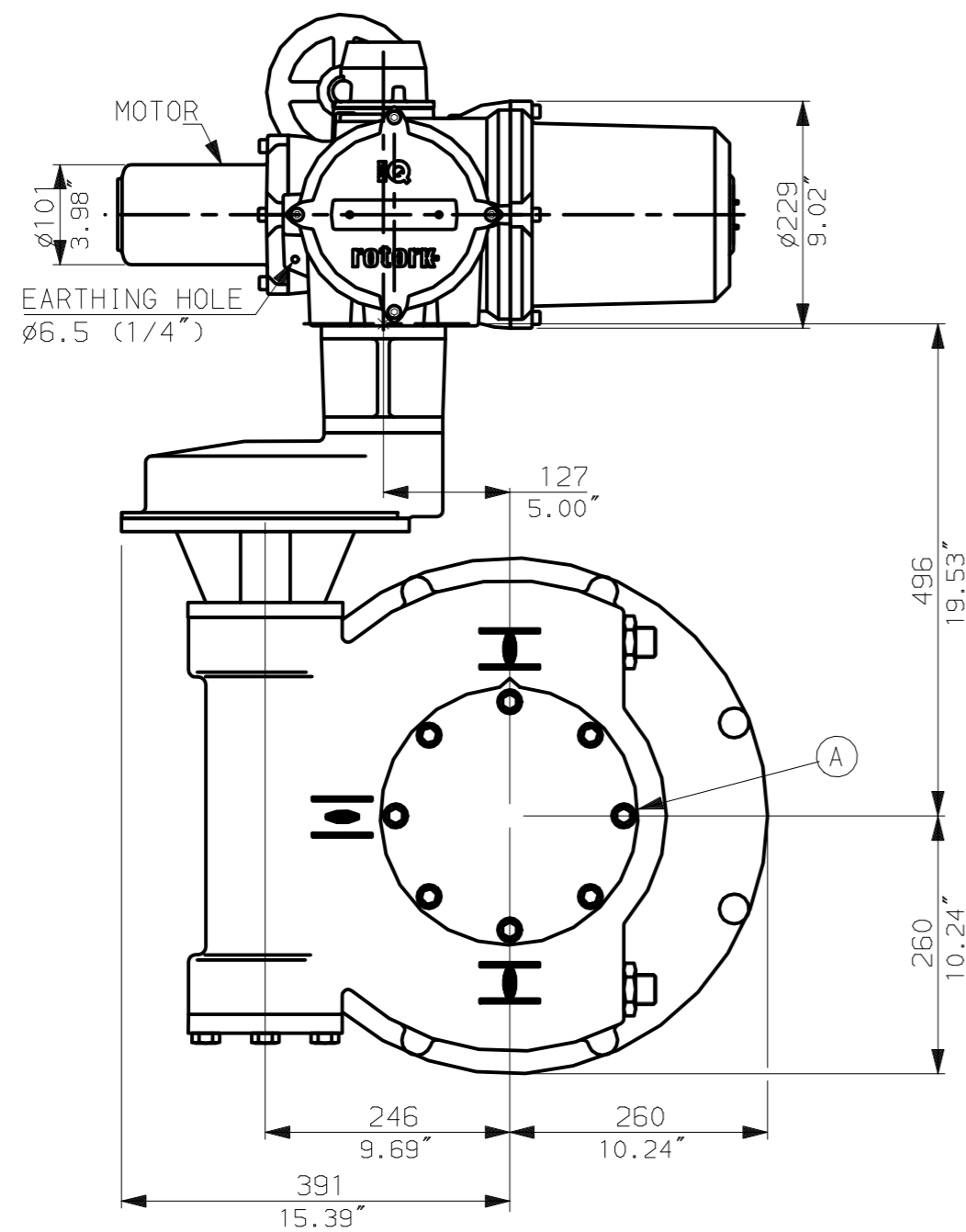
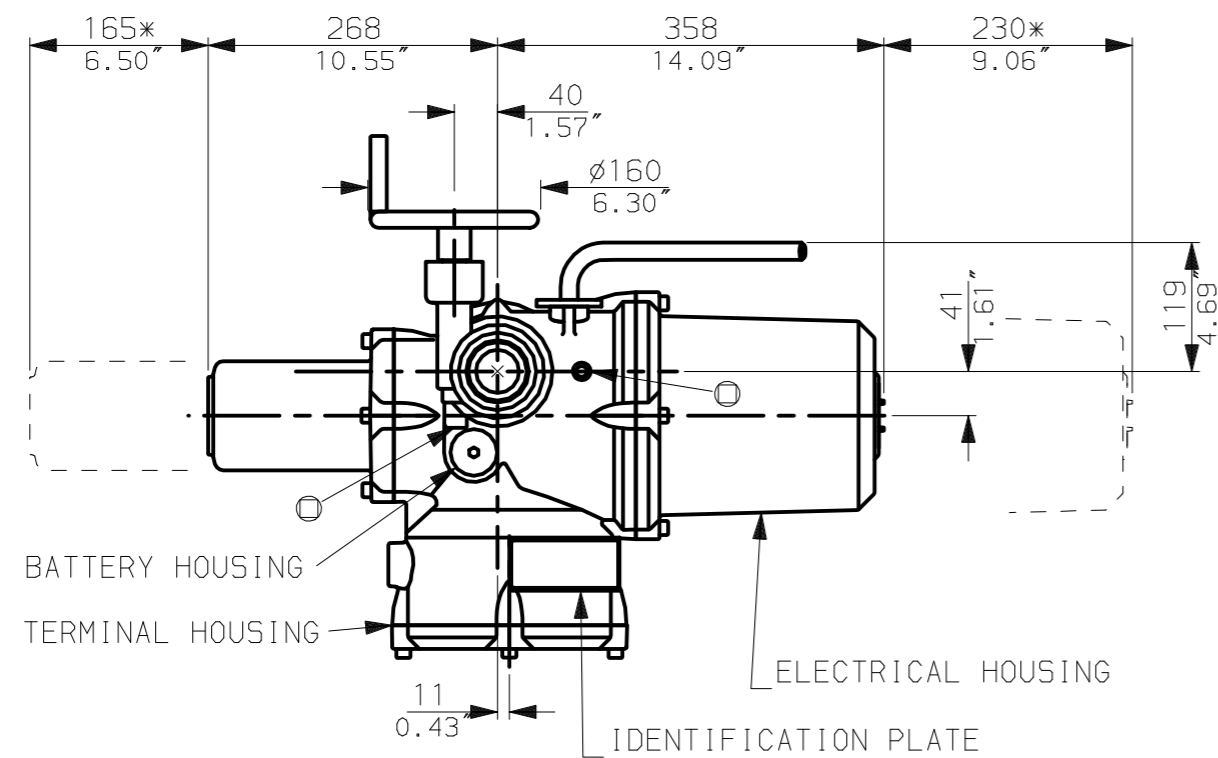
NOTE:  
Gearbox is shown with HIGH Ratio Input Reducer.  
(ie Ratios 480,540,720)  
See Data Sheet with IW8RL for LOW ratio option.

**rotork**  
www.rotork.com

Rotork Controls Ltd.  
Bath England, BA1 3JQ.  
(Phone 01225-733200)  
Rotork Controls Inc.  
Rochester, NY 14624  
(Phone 585-328-1550)

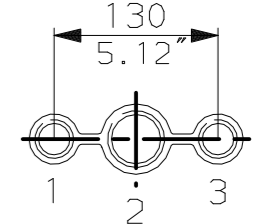
Title IQ10,12,18, (+I0512), LTHW, IW (MOW) 8 (+82+85) Rh,	
STANDARD DIMENSIONAL DATA	
Drawn CAD	Checked PRE Ref Data Sheet
Date 150605	Job No IQ1LTHW_IW8Rh

02	4.69" corrected from 6.50"
01	First Issue.
Scale	1:7 THIRD ANGLE PROJECTION
Drawing Number	IQ1LTHW_IW8Rh



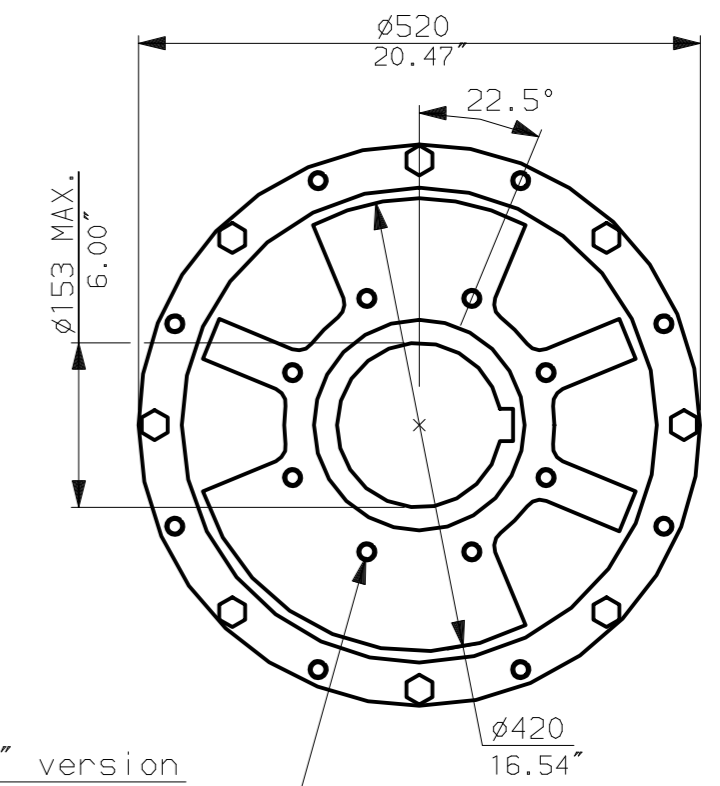
NOTES:  
 : DIMENSIONS WITH '\*' INDICATE COVER REMOVAL ALLOWANCE  
 : NETT WEIGHT = 244kg (537lbs)  
 : = OIL FILLER/DRAIN PLUG  
 : THE INTERFACE PROVIDED FOR MOUNTING THE ACTUATOR OR SECOND STAGE GEARBOX ONTO THE VALVE SHOULD CONFORM TO GOOD ENGINEERING PRACTICES, ENSURING ADEQUATELY TOLERANCED LIMITS FOR PARALLELISM, PERPENDICULARITY AND CONCENTRICITY.

**CONDUIT ENTRIES** (N.T.S)



Nos.1 & 3 TAPPED 1" NPT  
 No.2 TAPPED 1 1/2" NPT  
 STD ALTERNATIVES IF SPECIFIED  
 2 X M25, 1 X M40  
 2 X PG16, 1 X PG29

N.B. KEYWAY POS. CAN BE MOVED 90 OR 180° BY REMOVING 8 SCREWS MARKED (A) AND ROTATING OUTPUT SLEEVE.



"F" version  
 8 HOLES TAPPED M16 x 30 DP  
 EQUI-SPACED AS SHOWN ON A  
 254 PCD (ISO 5211-F25).

"FA" version  
 8 HOLES TAPPED 5/8" UNC x 1.18" dp  
 EQUI-SPACED AS SHOWN ON A  
 10" PCD (MSS SP101-FA25).

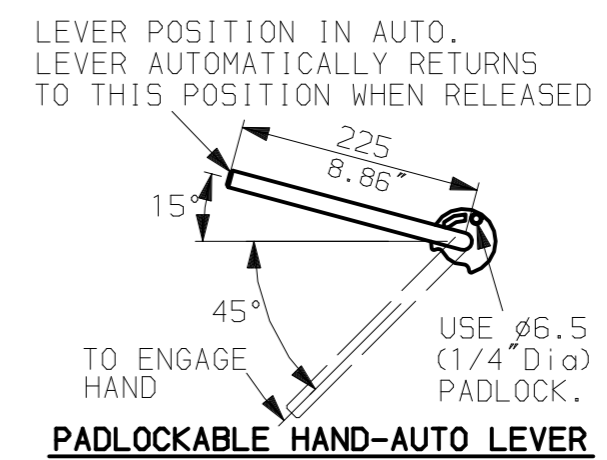
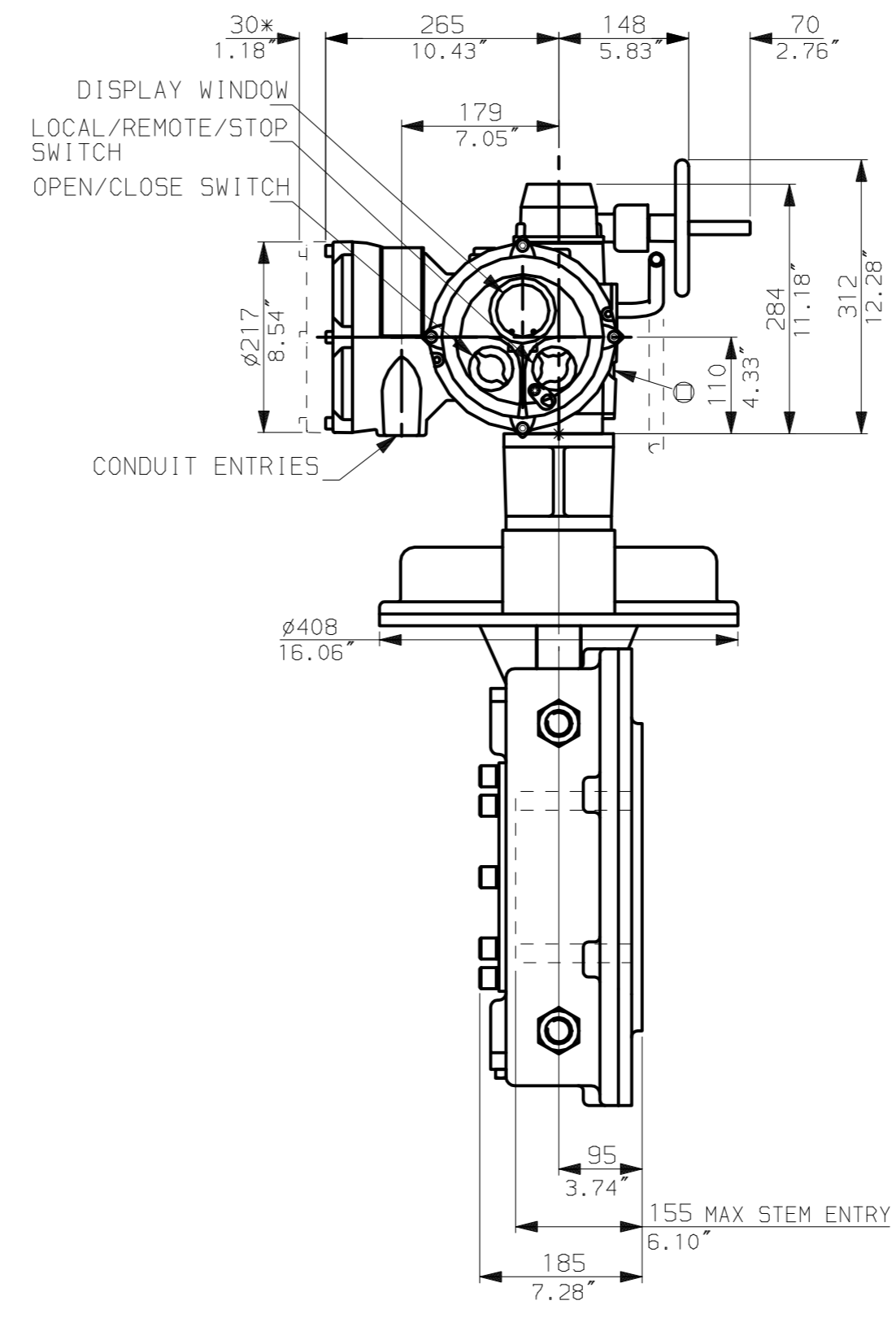
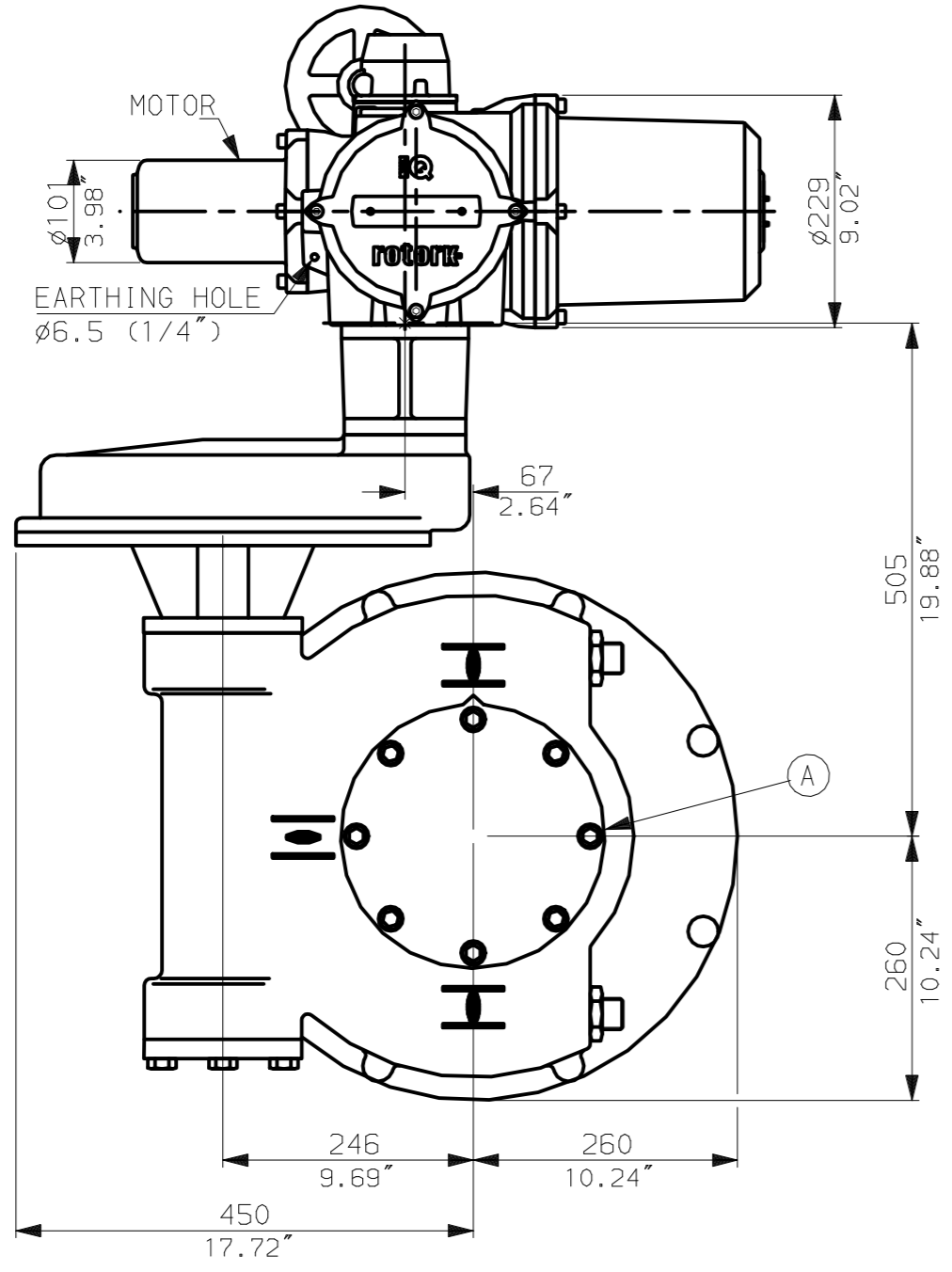
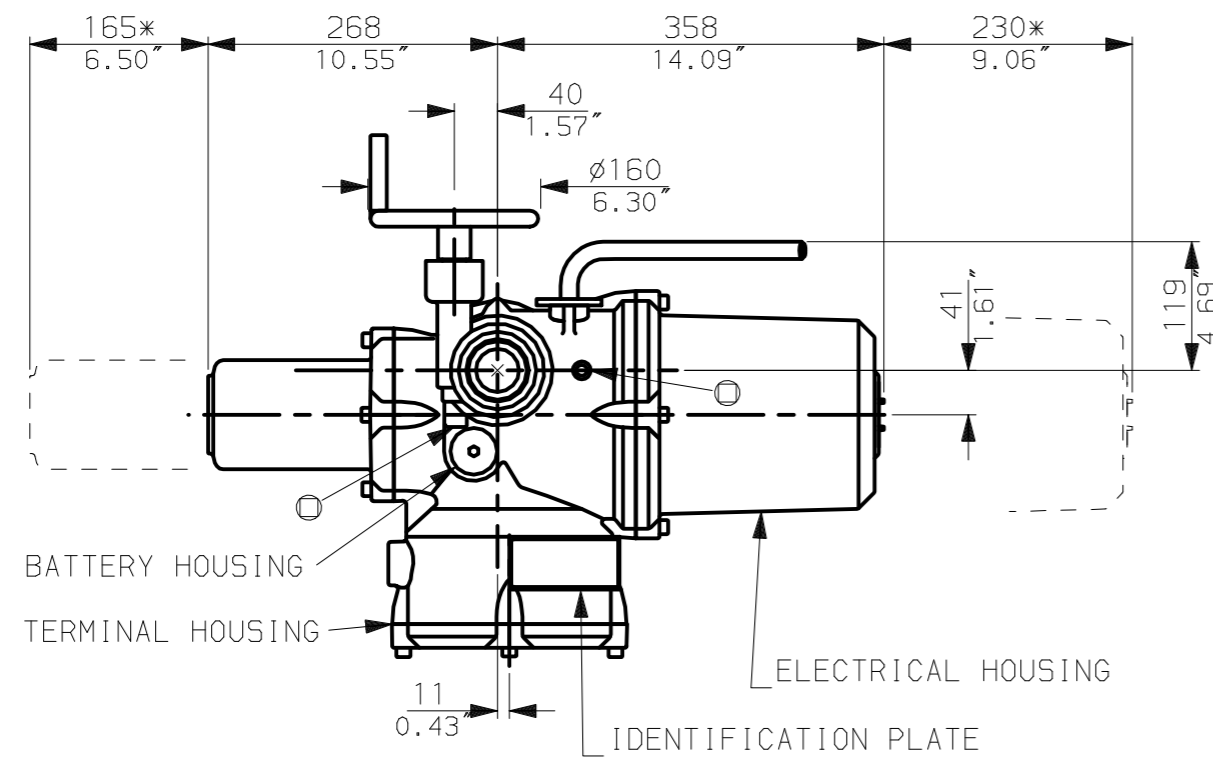
NOTE:  
 Gearbox is shown with LOW Ratio Input Reducer.  
 (ie Ratios 120, 180, 240, 360)  
 See Data Sheet with IW8Rh for HIGH ratio option.



Rotork Controls Ltd.  
 Bath England, BA1 3JQ.  
 (Phone 01225-733200)  
 Rotork Controls Inc.  
 Rochester, NY 14624  
 (Phone 585-328-1550)

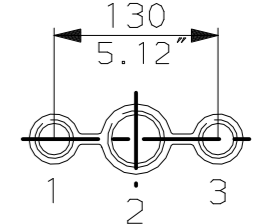
Title IQ10, 12, 18, (+IQ512), SHW, IW (MOW) 8 (+82+85) RL			
STANDARD DIMENSIONAL DATA			
Drawn CAD	Checked PRE	Ref Data Sheet	
Date 150605	Job No IQ1SHW_IW8RL		

02	4.69" corrected from 6.50"
01	First Issue.
Scale	1:7 THIRD ANGLE PROJECTION
Drawing Number	IQ1SHW_IW8RL



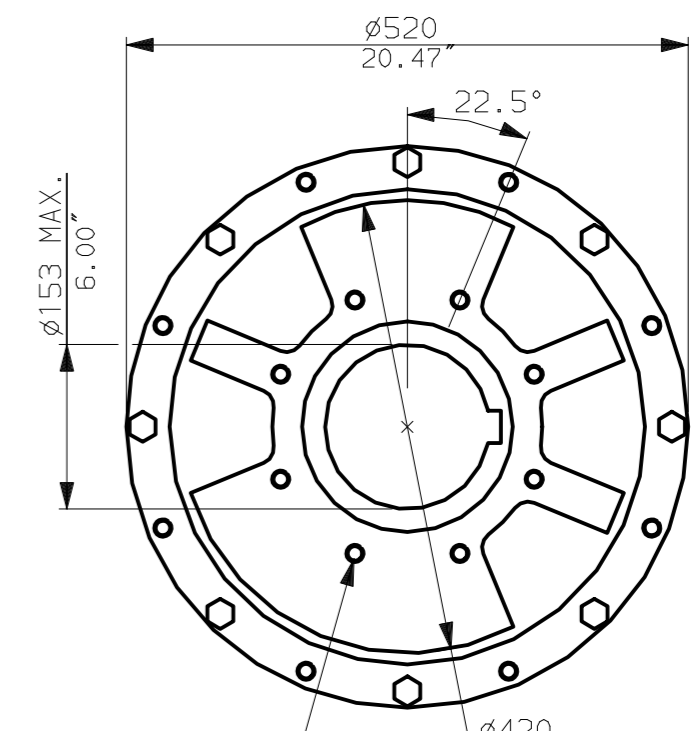
**NOTES:**  
 : DIMENSIONS WITH '\*' INDICATE COVER REMOVAL ALLOWANCE  
 : NETT WEIGHT = 254kg (559lbs)  
 :  $\phi$  = OIL FILLER/DRAIN PLUG  
 : THE INTERFACE PROVIDED FOR MOUNTING THE ACTUATOR OR SECOND STAGE GEARBOX ONTO THE VALVE SHOULD CONFORM TO GOOD ENGINEERING PRACTICES, ENSURING ADEQUATELY TOLERANCED LIMITS FOR PARALLELISM, PERPENDICULARITY AND CONCENTRICITY.

**CONDUIT ENTRIES (N.T.S)**



Nos.1 & 3 TAPPED 1" NPT  
 No.2 TAPPED 1 1/2" NPT  
 STD ALTERNATIVES IF SPECIFIED  
 2 X M25, 1 X M40  
 2 X PG16, 1 X PG29

N.B. KEYWAY POS. CAN BE MOVED 90 OR 180° BY REMOVING 8 SCREWS MARKED (A) AND ROTATING OUTPUT SLEEVE.



"F" version  
 8 HOLES TAPPED M16 x 30 DP  
 EQUI-SPACED AS SHOWN ON A  
 254 PCD (ISO 5211-F25).

"FA" version  
 8 HOLES TAPPED 5/8" UNC x 1.18" dp  
 EQUI-SPACED AS SHOWN ON A  
 10" PCD (MSS SP101-FA25).



Rotork Controls Ltd.  
 Bath England, BA1 3JQ.  
 (Phone 01225-733200)  
 Rotork Controls Inc.  
 Rochester, NY 14624  
 (Phone 585-328-1550)

Title IQ10, 12, 18, (+IQ512), SHW, IW (MOW) 8 (+82+85) Rh			
STANDARD DIMENSIONAL DATA			
Drawn CAD	Checked PRE	Ref Data Sheet	
Date 150605	Job No	IQ1SHW_IW8Rh	

**NOTE:**  
 Gearbox is shown with HIGH Ratio Input Reducer.  
 (ie Ratios 480, 540, 720)  
 See Data Sheet with IW8RL for LOW ratio option.

02	4.69" corrected from 6.50"
01	First Issue.
Scale	1:7 THIRD ANGLE PROJECTION
Drawing Number	IQ1SHW_IW8Rh