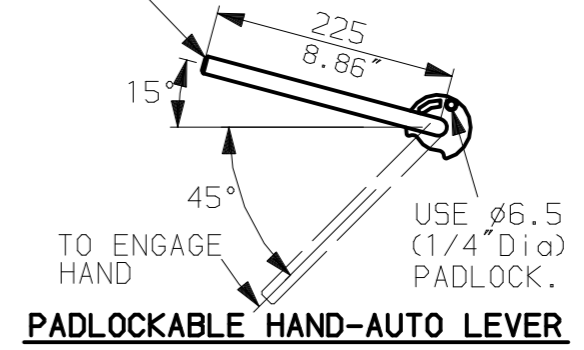
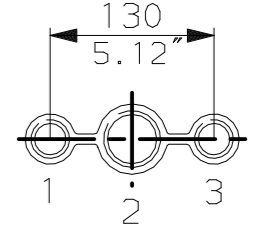


LEVER POSITION IN AUTO.
LEVER AUTOMATICALLY RETURNS
TO THIS POSITION WHEN RELEASED

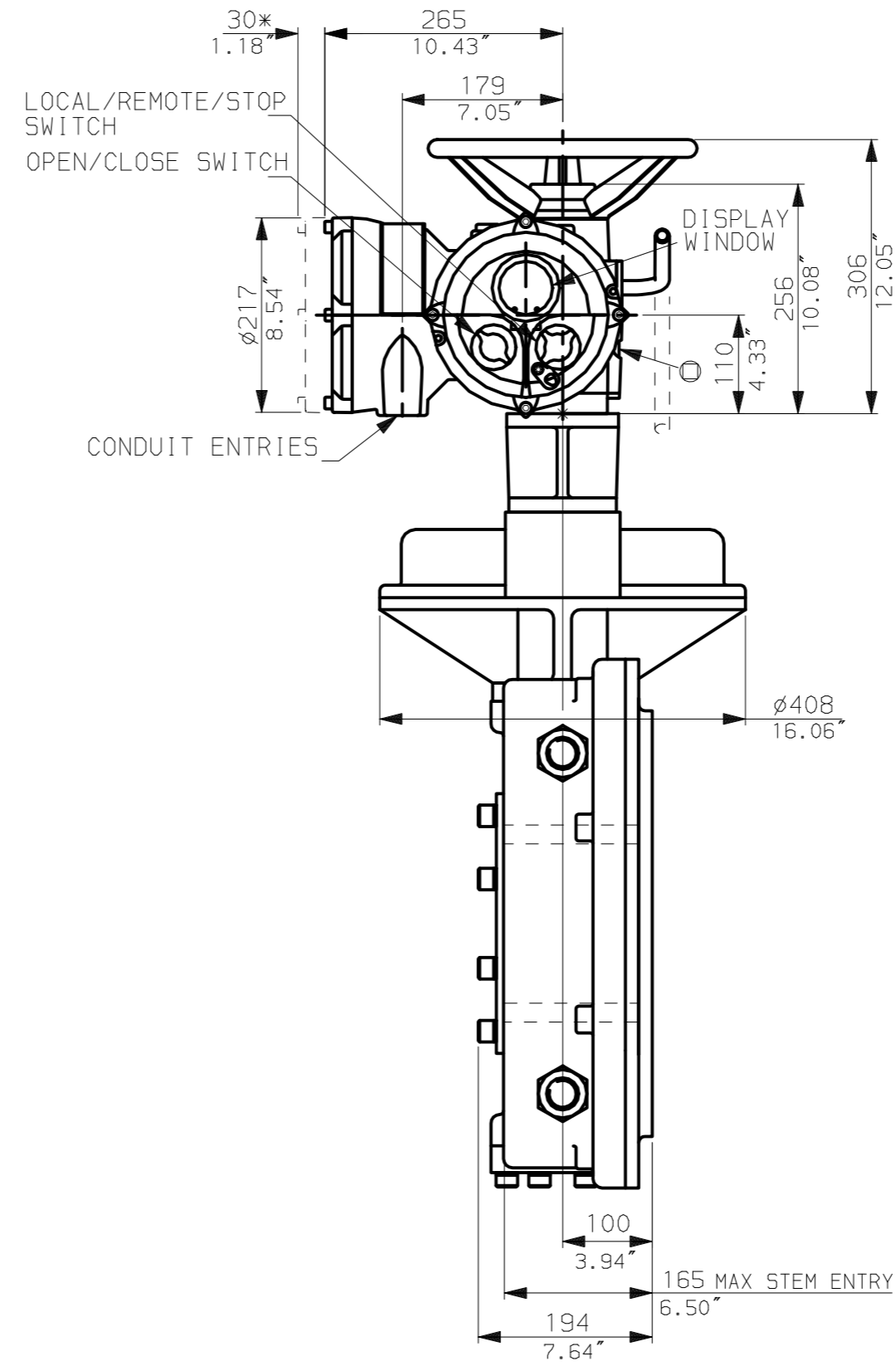
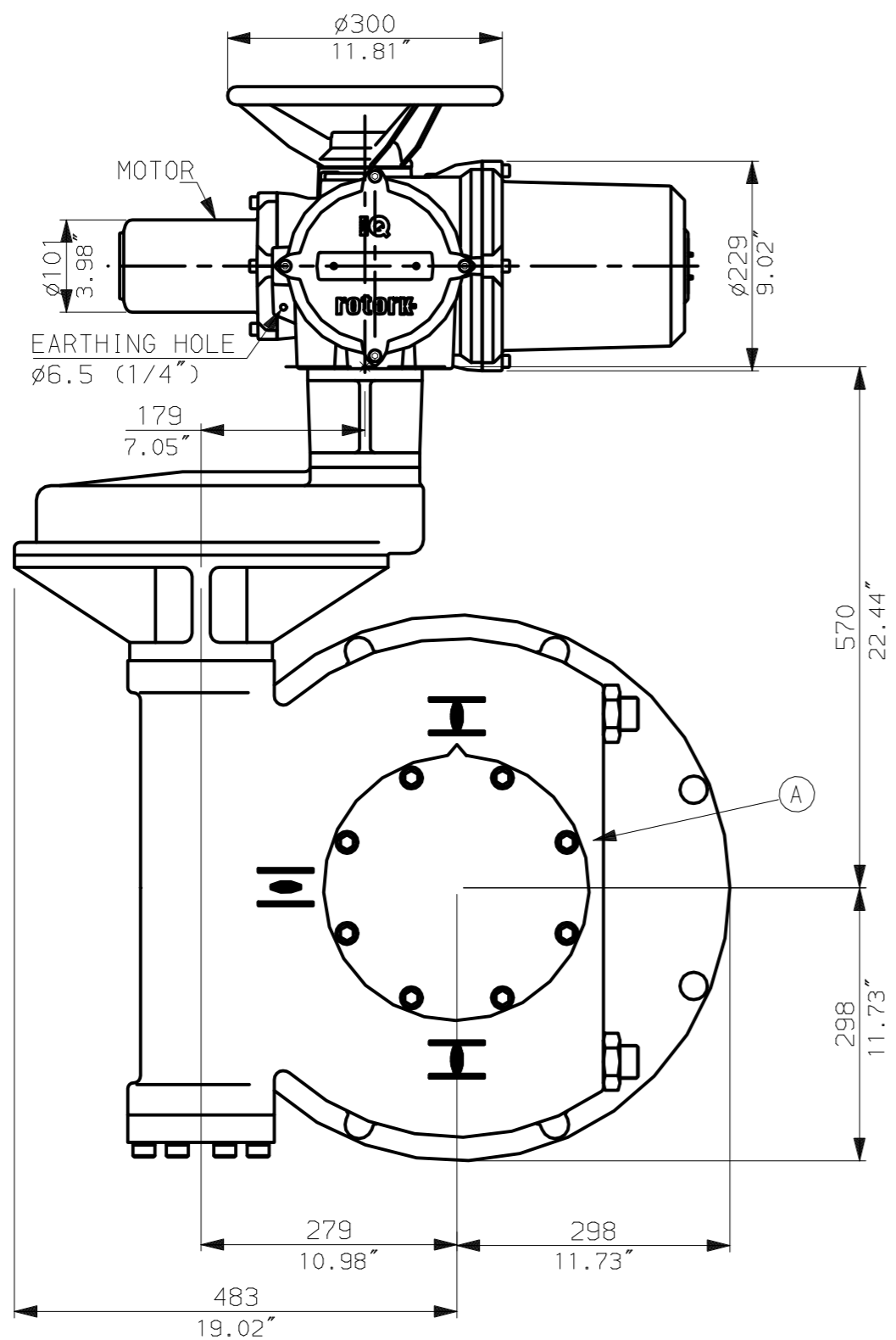


NOTES:
: DIMENSIONS WITH '*' INDICATE COVER REMOVAL ALLOWANCE
: NETT WEIGHT = 294kg (647lbs)
: ϕ = OIL FILLER/DRAIN PLUG
: THE INTERFACE PROVIDED FOR MOUNTING THE ACTUATOR OR SECOND STAGE GEARBOX ONTO THE VALVE SHOULD CONFORM TO GOOD ENGINEERING PRACTICES, ENSURING ADEQUATELY TOLERANCED LIMITS FOR PARALLELISM, PERPENDICULARITY AND CONCENTRICITY.

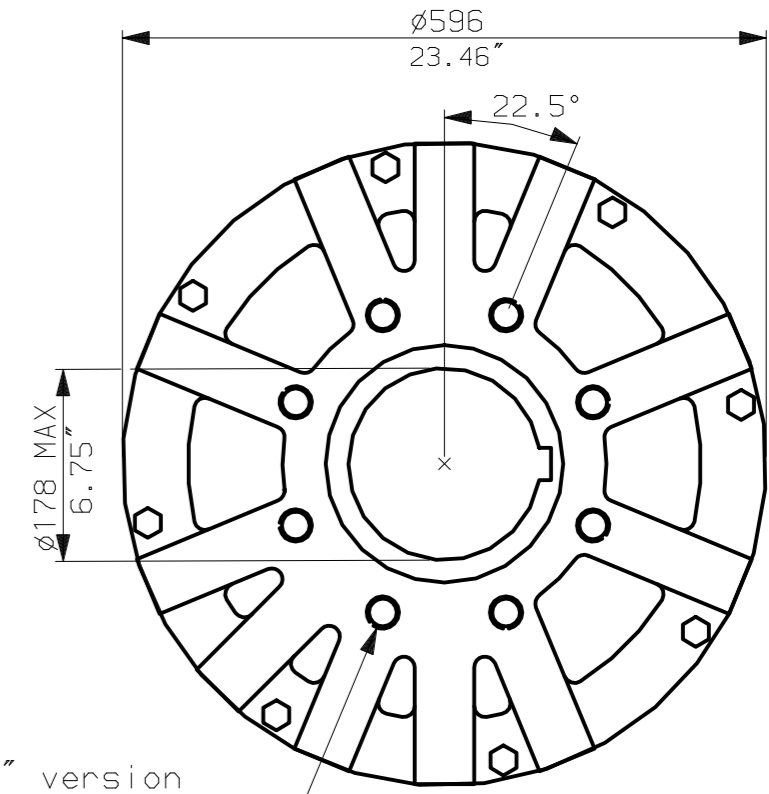
CONDUIT ENTRIES (N.T.S)



Nos.1 & 3 TAPPED 1" NPT
No.2 TAPPED 1 1/2" NPT
STD ALTERNATIVES IF SPECIFIED
2 X M25, 1 X M40
2 X PG16, 1 X PG29



N.B. KEYWAY POS. CAN BE MOVED IN 45° STEPS BY REMOVING 8 SCREWS MARKED (A) AND ROTATING OUTPUT SLEEVE.



"F" version
8 HOLES TAPPED M20 x 30 DP
EQUI-SPACED AS SHOWN ON A
298 PCD (150 5211-F30).

"FA" version
8 HOLES TAPPED 3/4" UNC x 1.18" dp
EQUI-SPACED AS SHOWN ON A
11.75" PCD (MSS SP101-FA30).

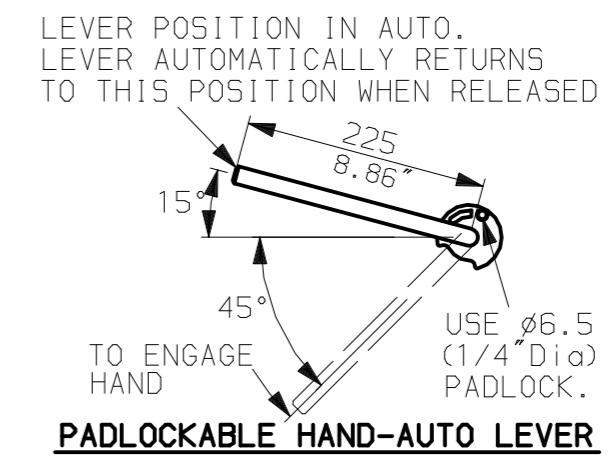
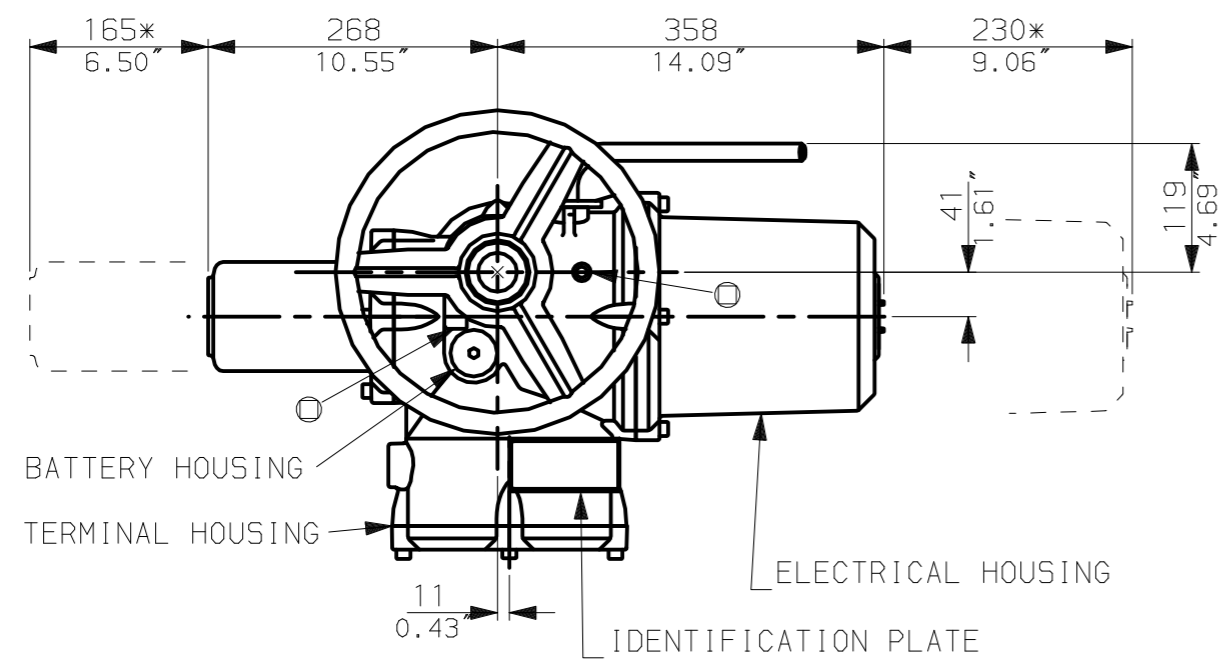
NOTE:
Gearbox is shown with LOW Ratio Input Reducer.
(ie Ratios 180, 240, 360, 480, 540, 720)
See Data Sheet with IW9Rh for HIGH ratio option.

rotork
www.rotork.com

Rotork Controls Ltd.
Bath England, BA1 3JQ.
(Phone 01225-733200)
Rotork Controls Inc.
Rochester, NY 14624
(Phone 585-328-1550)

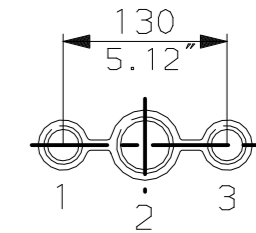
Title IQ10, 12, 18, (+IQS12), THW, IW (MOW) 9RL,		
STANDARD DIMENSIONAL DATA		
Drawn CAD	Checked PRE	Ref Data Sheet
Date 150605	Job No	IQ1THW_IW9RL

02	4.69" corrected from 6.50"
01	First Issue.
Scale	1:7 THIRD ANGLE PROJECTION
Drawing Number	IQ1THW_IW9RL

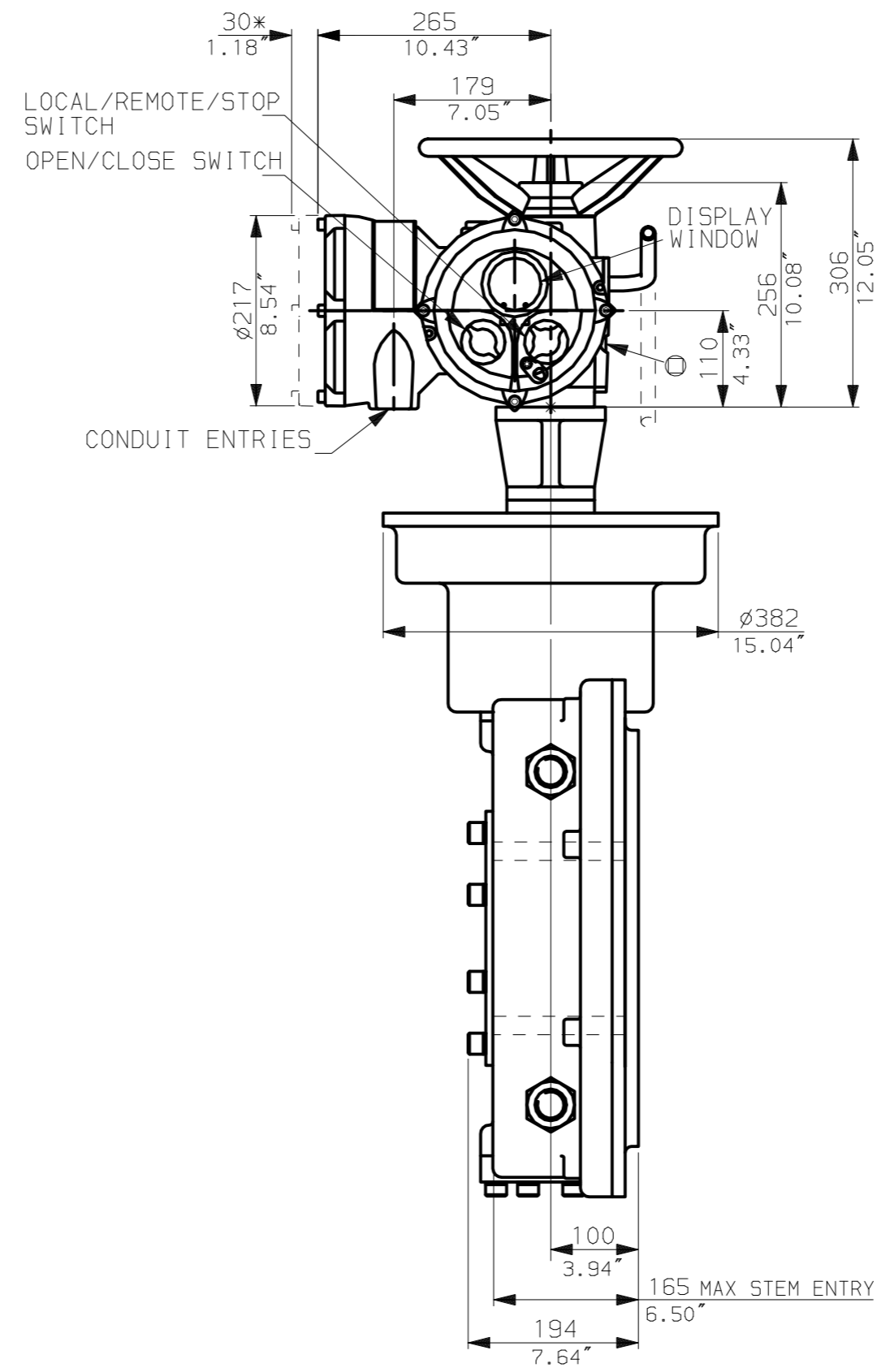
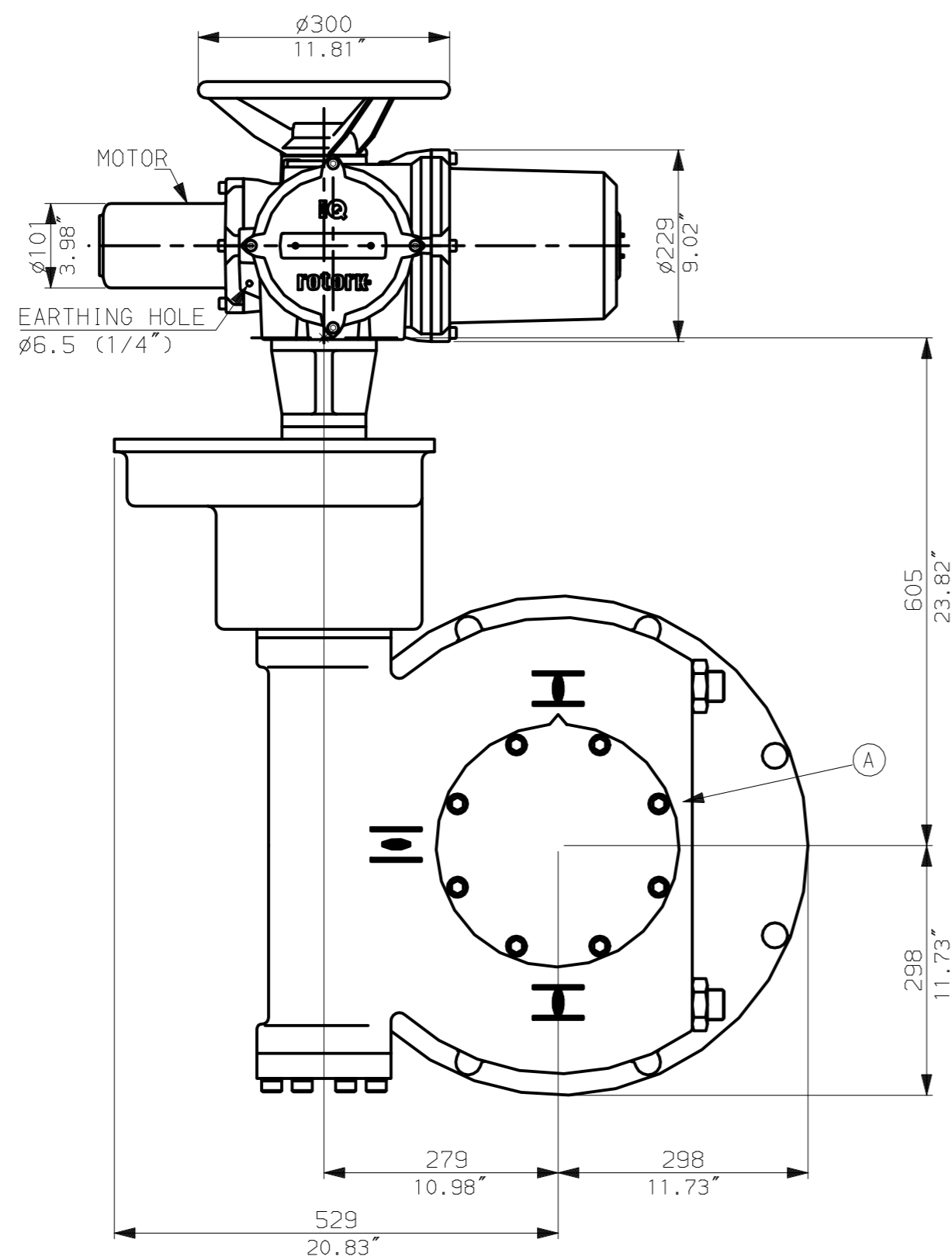


NOTES:
 :DIMENSIONS WITH '*' INDICATE COVER REMOVAL ALLOWANCE
 :NETT WEIGHT = 322kg (708lbs)
 : = OIL FILLER/DRAIN PLUG
 :THE INTERFACE PROVIDED FOR MOUNTING THE ACTUATOR OR SECOND STAGE GEARBOX ONTO THE VALVE SHOULD CONFORM TO GOOD ENGINEERING PRACTICES, ENSURING ADEQUATELY TOLERANCED LIMITS FOR PARALLELISM, PERPENDICULARITY AND CONCENTRICITY.

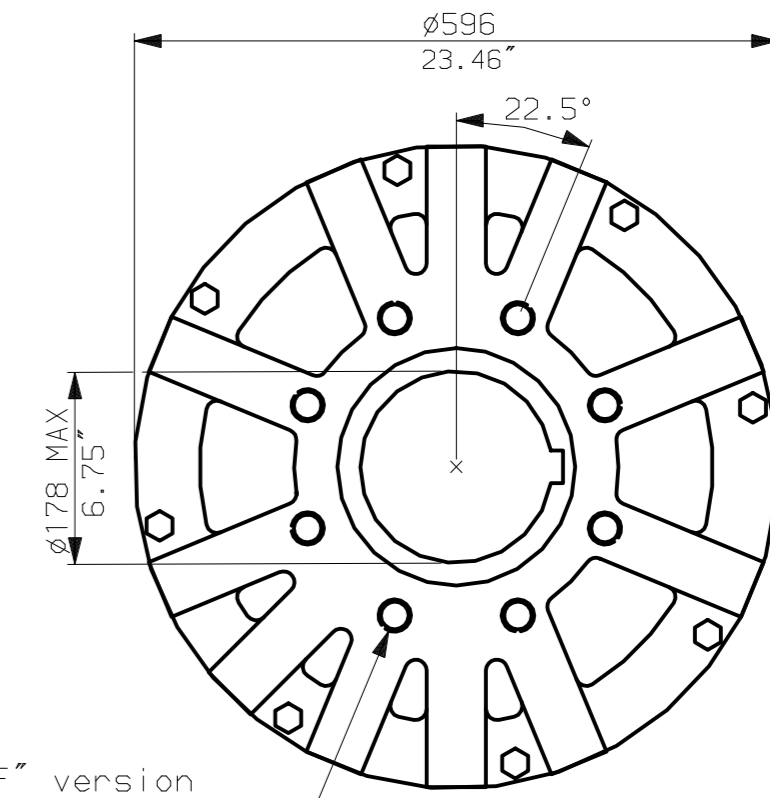
CONDUIT ENTRIES (N.T.S)



Nos.1 & 3 TAPPED 1" NPT
 No.2 TAPPED 1 1/2" NPT
 STD ALTERNATIVES IF SPECIFIED
 2 X M25, 1 X M40
 2 X PG16, 1 X PG29



N.B. KEYWAY POS. CAN BE MOVED IN 45° STEPS BY REMOVING 8 SCREWS MARKED (A) AND ROTATING OUTPUT SLEEVE.



"F" version

8 HOLES TAPPED M20 x 30 DP
 EQUI-SPACED AS SHOWN ON A
 298 PCD (150 5211-F30).

"FA" version

8 HOLES TAPPED 3/4"UNCx1.18"dp
 EQUI-SPACED AS SHOWN ON A
 11.75" PCD (MSS SP101-FA30).

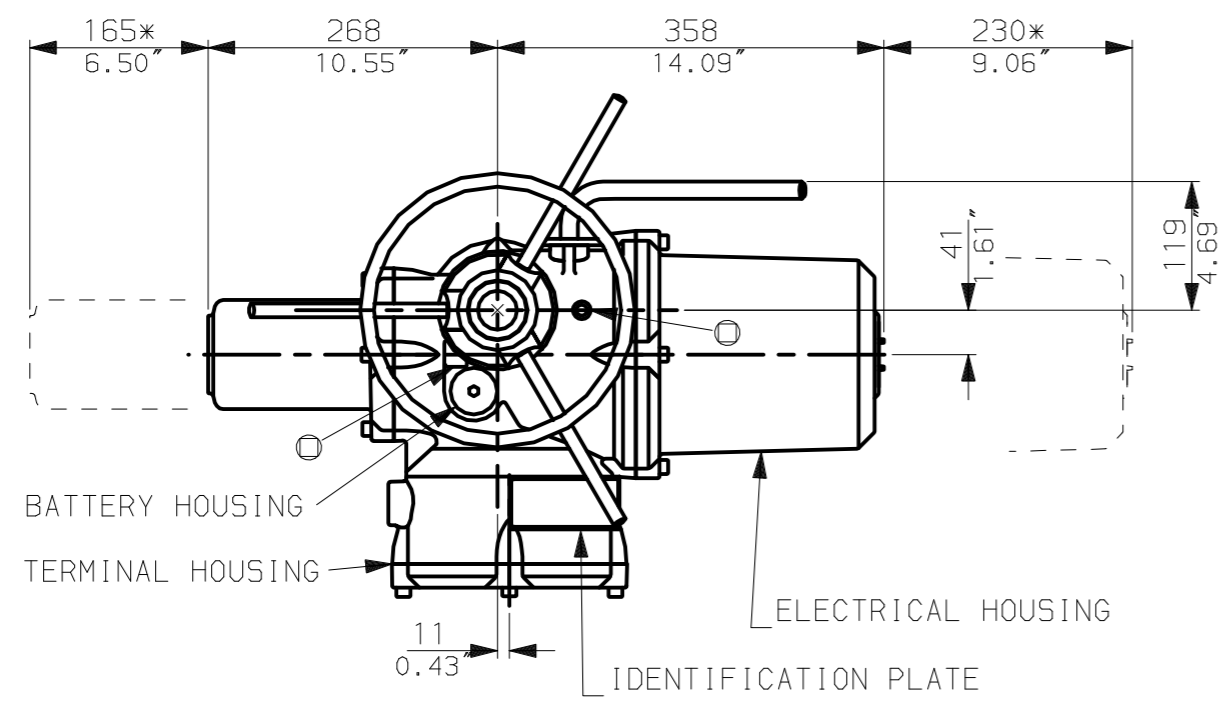
rotork
 www.rotork.com

Rotork Controls Ltd.
 Bath England, BA1 3JQ.
 (Phone 01225-733200)
 Rotork Controls Inc.
 Rochester, NY 14624
 (Phone 585-328-1550)

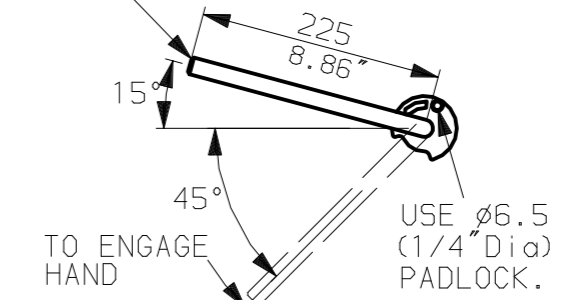
Title IQ10, 12, 18, (+IQS12), THW, IW (MOW) 9Rh,		
STANDARD DIMENSIONAL DATA		
Drawn CAD	Checked PRE	Ref Data Sheet
Date 150605	Job No	IQ1THW_IW9Rh

NOTE:
 Gearbox is shown with HIGH Ratio Input Reducer.
 (ie Ratios 960, 1080, 1440, 2160, 2520, 3000)
 See Data Sheet with IW9RL for LOW ratio option.

02	4.69" corrected from 6.50"
01 Issue	First Issue.
Scale	1:7 THIRD ANGLE PROJECTION
Drawing Number	IQ1THW_IW9Rh



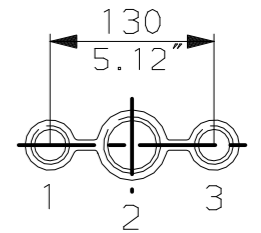
LEVER POSITION IN AUTO.
LEVER AUTOMATICALLY RETURNS
TO THIS POSITION WHEN RELEASED



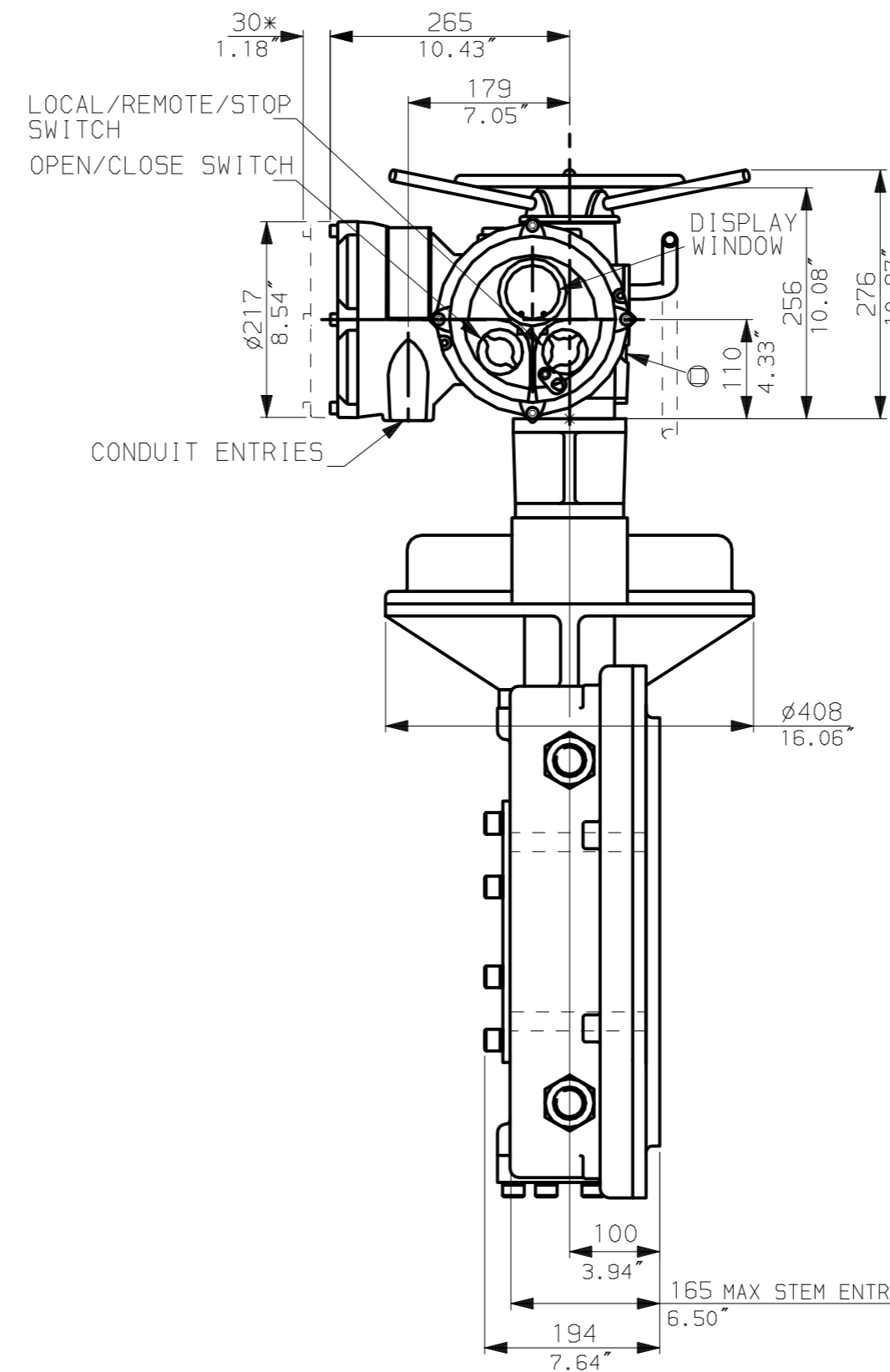
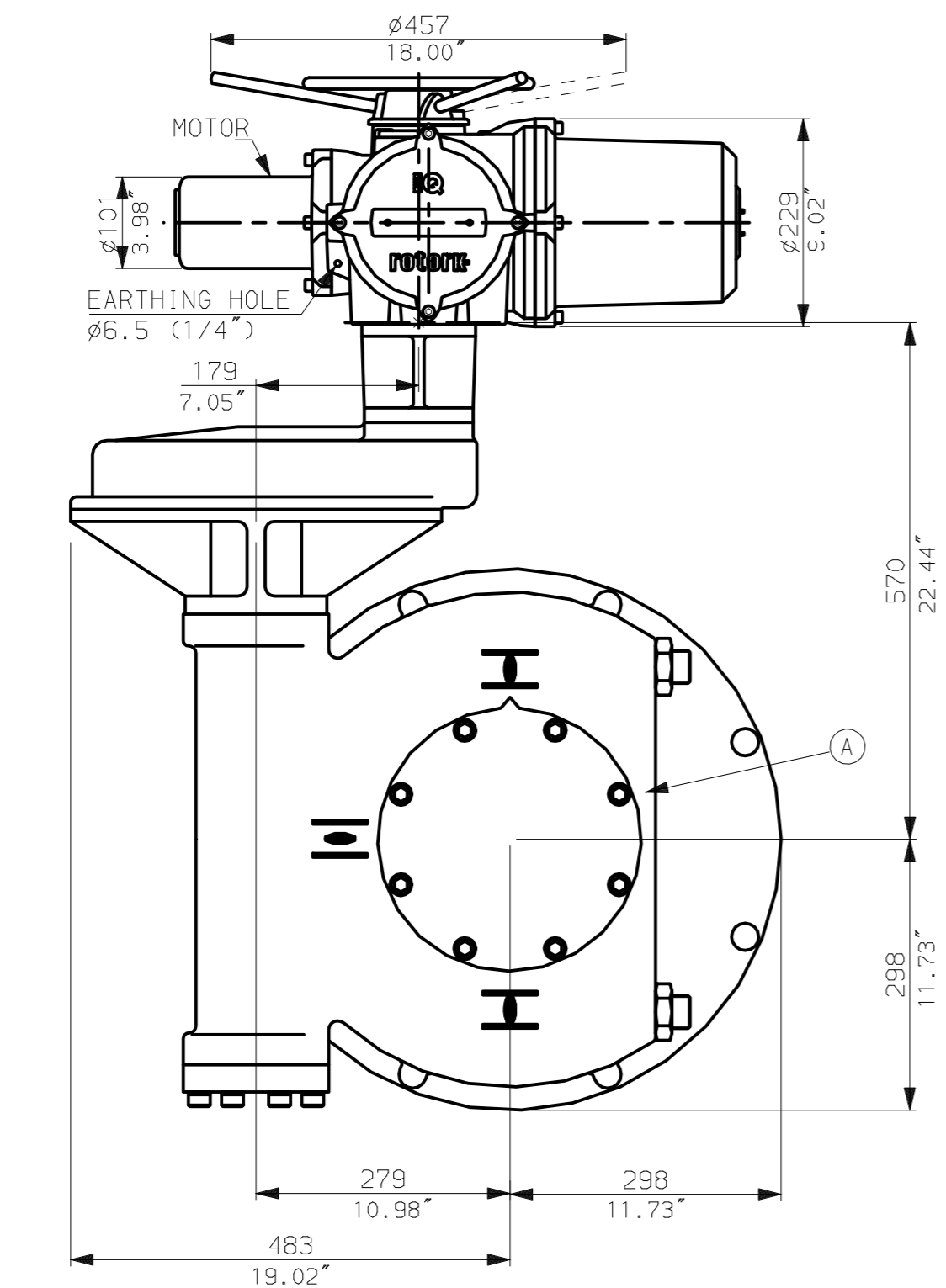
PADLOCKABLE HAND-AUTO LEVER

NOTES:
:DIMENSIONS WITH '*' INDICATE
COVER REMOVAL ALLOWANCE
:NETT WEIGHT = 294kg (647lbs)
:⊙ = OIL FILLER/DRAIN PLUG
:THE INTERFACE PROVIDED FOR MOUNTING THE
ACTUATOR OR SECOND STAGE GEARBOX ONTO THE
VALVE SHOULD CONFORM TO GOOD ENGINEERING
PRACTICES, ENSURING ADEQUATELY TOLERANCED
LIMITS FOR PARALLELISM, PERPENDICULARITY
AND CONCENTRICITY.

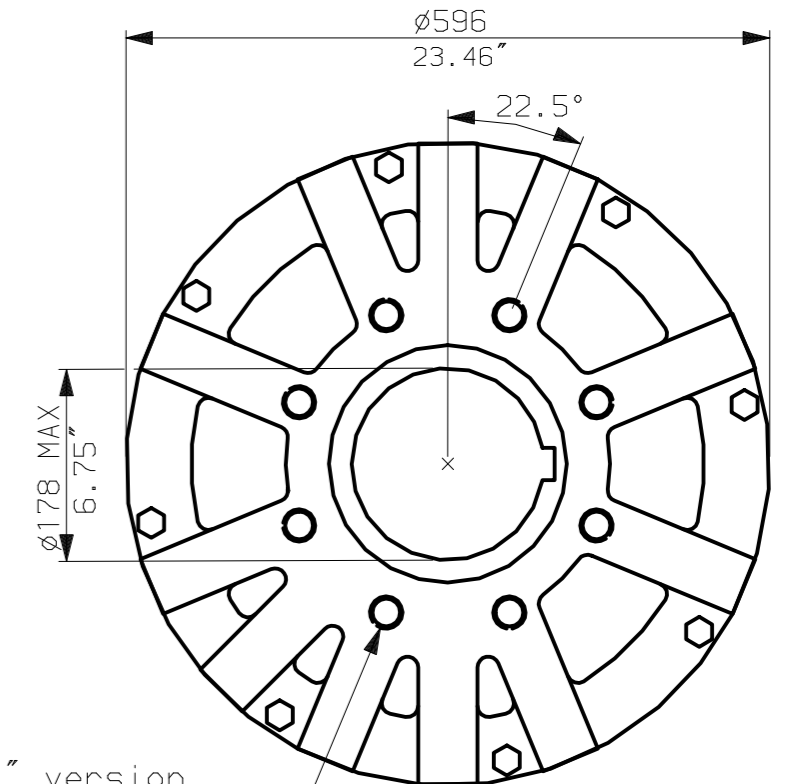
CONDUIT ENTRIES (N.T.S)



Nos.1 & 3 TAPPED 1" NPT
No.2 TAPPED 1 1/2" NPT
STD ALTERNATIVES IF SPECIFIED
2 X M25, 1 X M40
2 X PG16, 1 X PG29



N.B. KEYWAY POS. CAN BE MOVED IN
45° STEPS BY REMOVING 8 SCREWS
MARKED (A) AND ROTATING OUTPUT
SLEEVE.



"F" version

8 HOLES TAPPED M20 x 30 DP
EQUI-SPACED AS SHOWN ON A
298 PCD (ISO 5211-F30).

"FA" version

8 HOLES TAPPED 3/4"UNCx1.18"dp
EQUI-SPACED AS SHOWN ON A
11.75" PCD (MSS SP101-FA30).

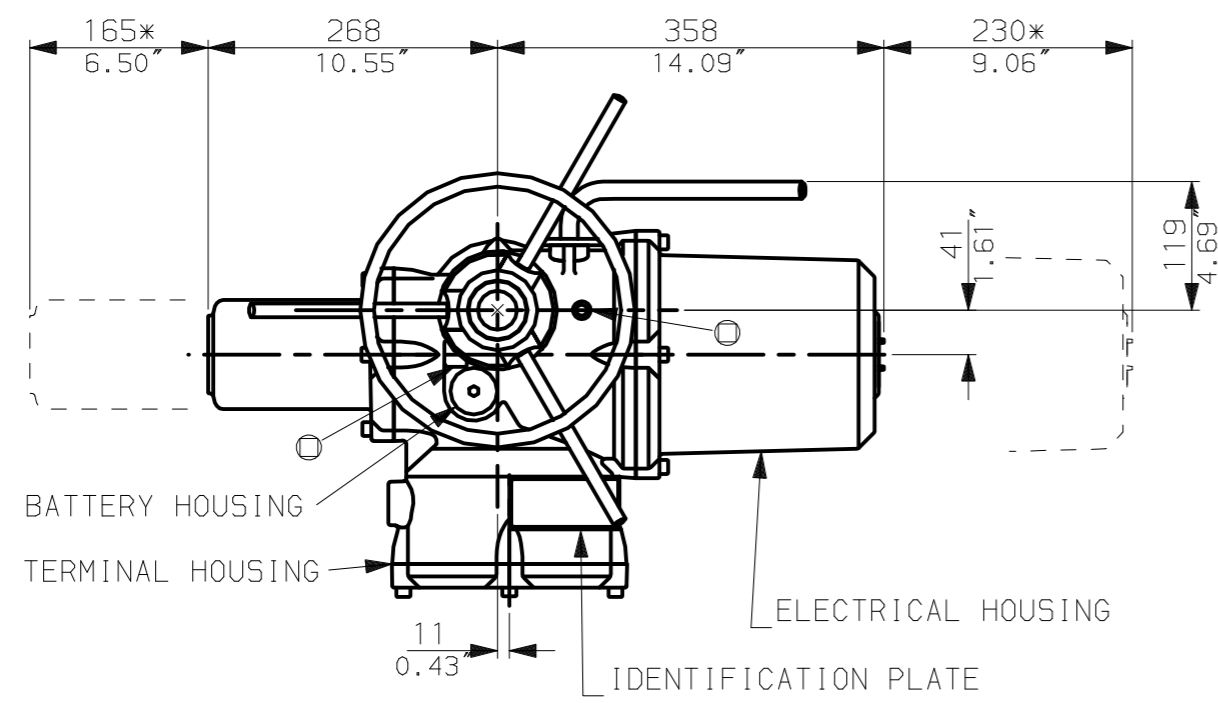
NOTE:
Gearbox is shown with LOW Ratio Input Reducer.
(ie Ratios 180, 240, 360, 480, 540, 720)
See Data Sheet with IW9Rh for HIGH ratio option.

rotork
www.rotork.com

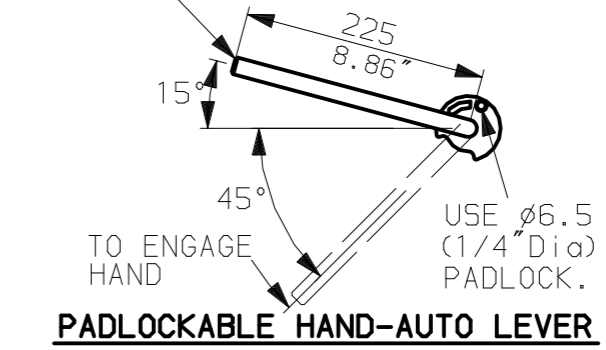
Rotork Controls Ltd.
Bath England, BA1 3JQ.
(Phone 01225-733200)
Rotork Controls Inc.
Rochester, NY 14624
(Phone 585-328-1550)

Title IQ10, 12, 18, (+IQS12), LTHW, IW(MOW)9RL,	
STANDARD DIMENSIONAL DATA	
Drawn CAD	Checked PRE Ref Data Sheet
Date 150605	Job No IQ1LTHW_IW9RL

02	4.69" corrected from 6.50"
01	First Issue.
Issue	
Scale	1:7 THIRD ANGLE PROJECTION
Drawing Number	IQ1LTHW_IW9RL

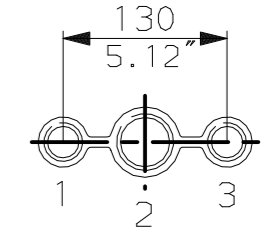


LEVER POSITION IN AUTO.
LEVER AUTOMATICALLY RETURNS
TO THIS POSITION WHEN RELEASED

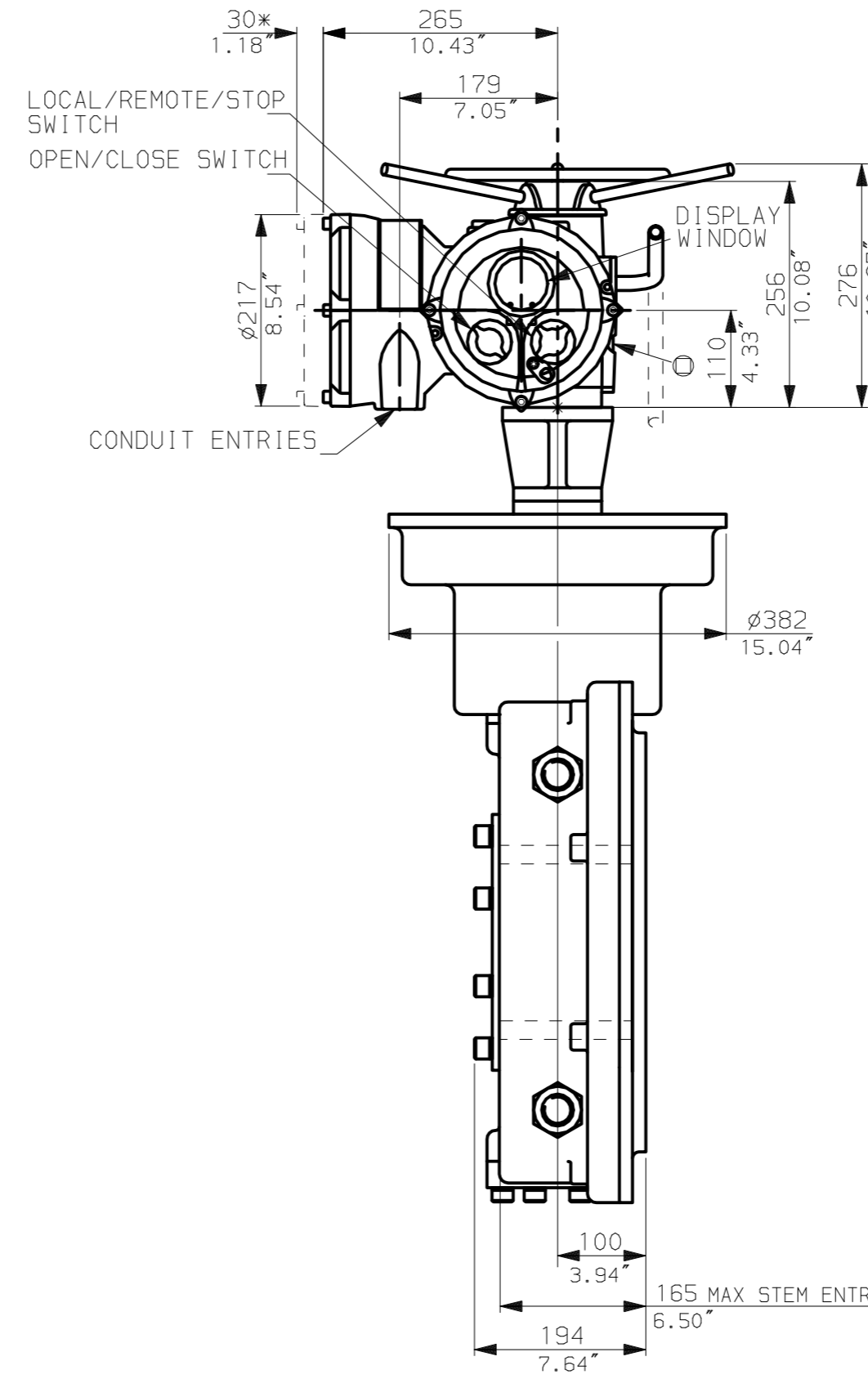
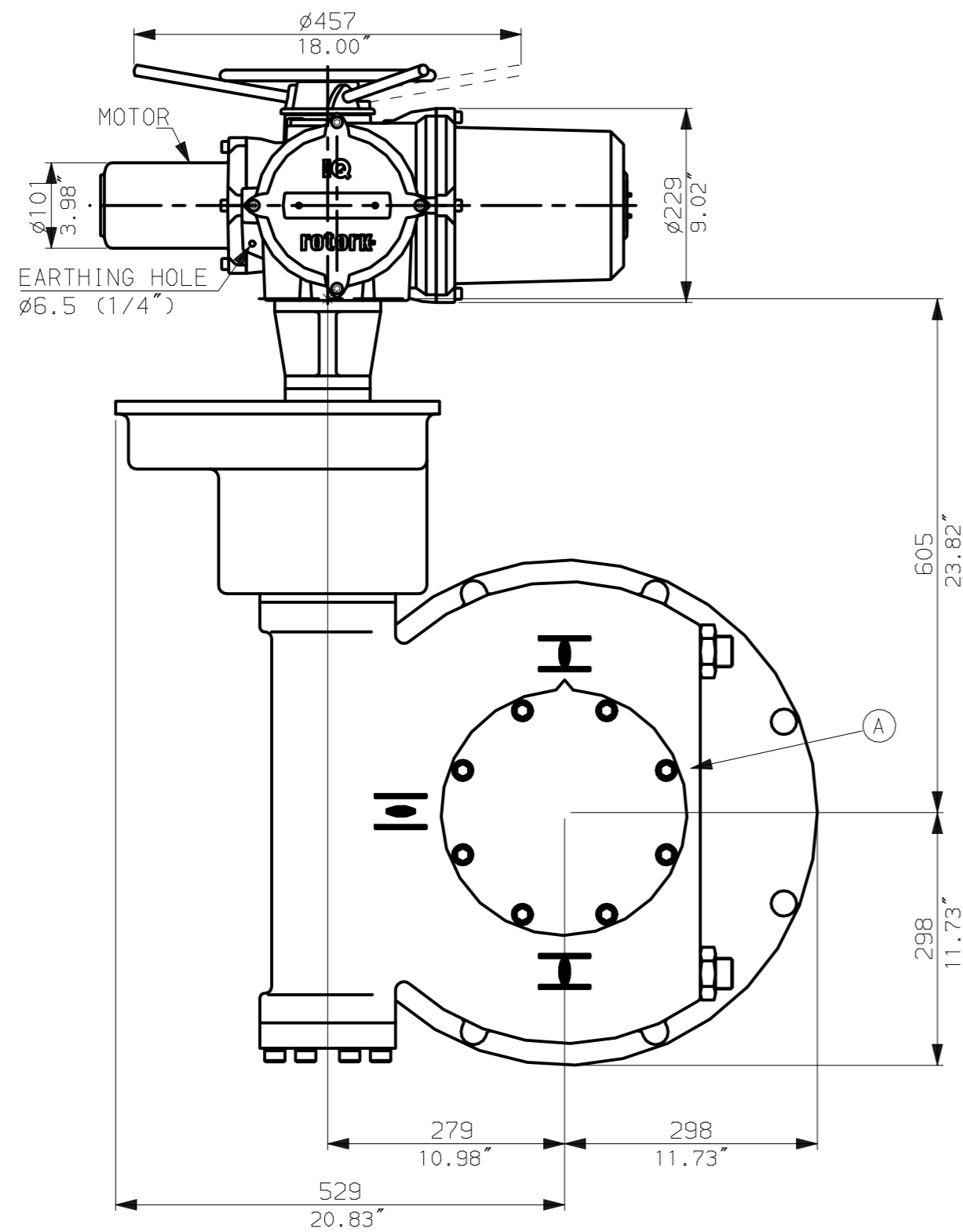


NOTES:
:DIMENSIONS WITH '*' INDICATE
COVER REMOVAL ALLOWANCE
:NETT WEIGHT = 322kg (708lbs)
:⊙ = OIL FILLER/DRAIN PLUG
:THE INTERFACE PROVIDED FOR MOUNTING THE
ACTUATOR OR SECOND STAGE GEARBOX ONTO THE
VALVE SHOULD CONFORM TO GOOD ENGINEERING
PRACTICES, ENSURING ADEQUATELY TOLERANCED
LIMITS FOR PARALLELISM, PERPENDICULARITY
AND CONCENTRICITY.

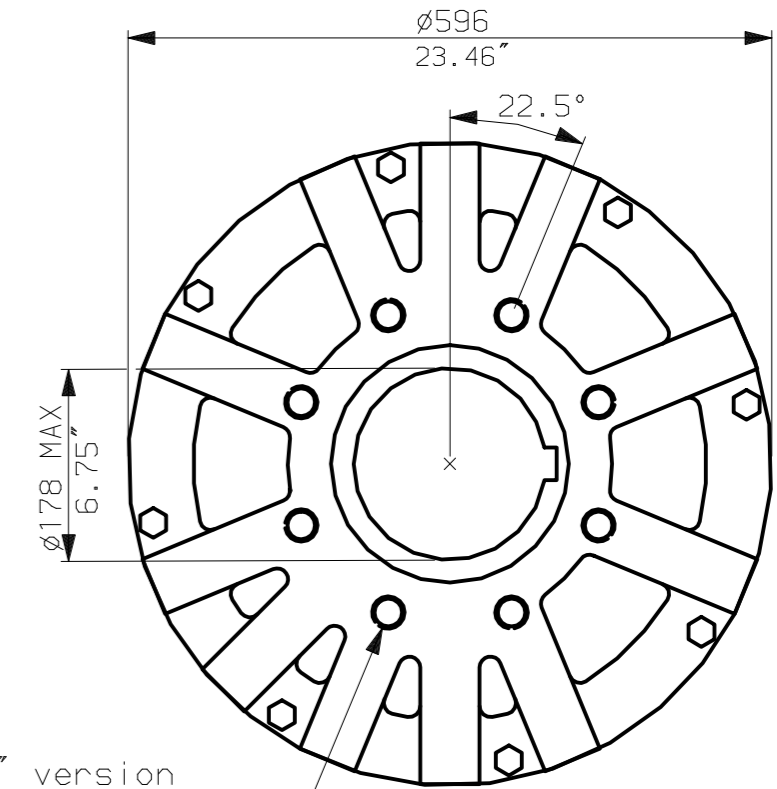
CONDUIT ENTRIES (N.T.S)



Nos.1 & 3 TAPPED 1" NPT
No.2 TAPPED 1 1/2" NPT
STD ALTERNATIVES IF SPECIFIED
2 X M25, 1 X M40
2 X PG16, 1 X PG29



N.B. KEYWAY POS. CAN BE MOVED IN
45° STEPS BY REMOVING 8 SCREWS
MARKED (A) AND ROTATING OUTPUT
SLEEVE.



"F" version
8 HOLES TAPPED M20 x 30 DP
EQUI-SPACED AS SHOWN ON A
298 PCD (150 5211-F30).

"FA" version
8 HOLES TAPPED 3/4" UNC x 1.18" dp
EQUI-SPACED AS SHOWN ON A
11.75" PCD (MSS SP101-FA30).

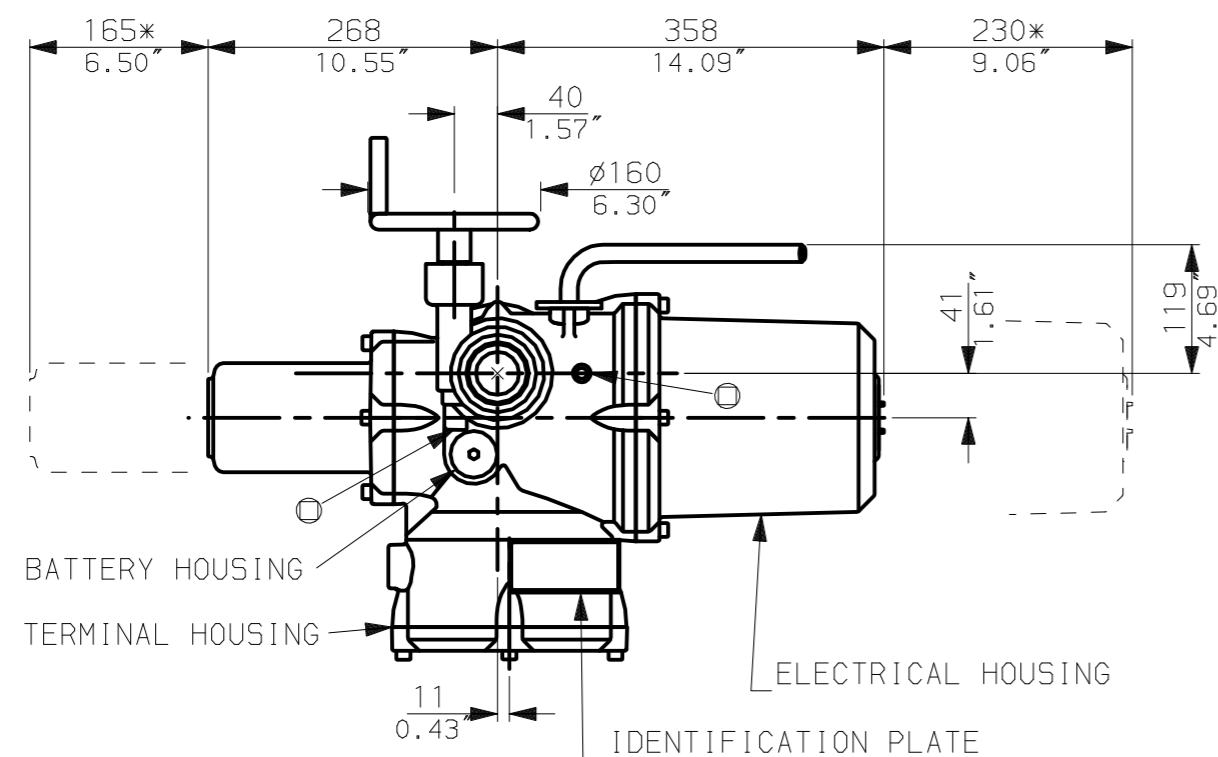
NOTE:
Gearbox is shown with HIGH Ratio Input Reducer.
(ie Ratios 960, 1080, 1440, 2160, 2520, 3000)
See Data Sheet with IW9RL for LOW ratio option.

rotork
www.rotork.com

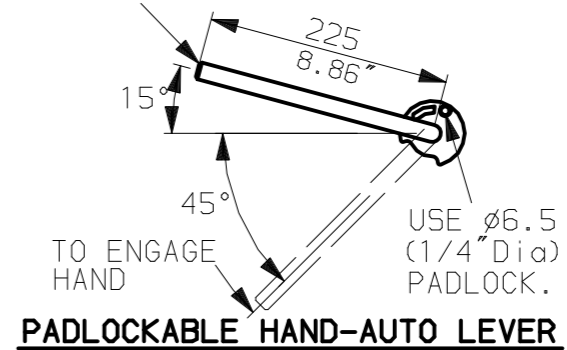
Rotork Controls Ltd.
Bath England, BA1 3JQ.
(Phone 01225-733200)
Rotork Controls Inc.
Rochester, NY 14624
(Phone 585-328-1550)

Title IQ10, 12, 18, (+IQS12), LTHW, IW (MOW) 9Rh,		
STANDARD DIMENSIONAL DATA		
Drawn CAD	Checked PRE	Ref Data Sheet
Date 150605	Job No	IQ1LTHW_IW9Rh

02	4.69" corrected from 6.50"
01	First Issue.
Scale	1:7 THIRD ANGLE PROJECTION
Drawing Number	IQ1LTHW_IW9Rh

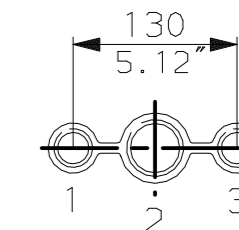


LEVER POSITION IN AUTO.
LEVER AUTOMATICALLY RETURNS
TO THIS POSITION WHEN RELEASED

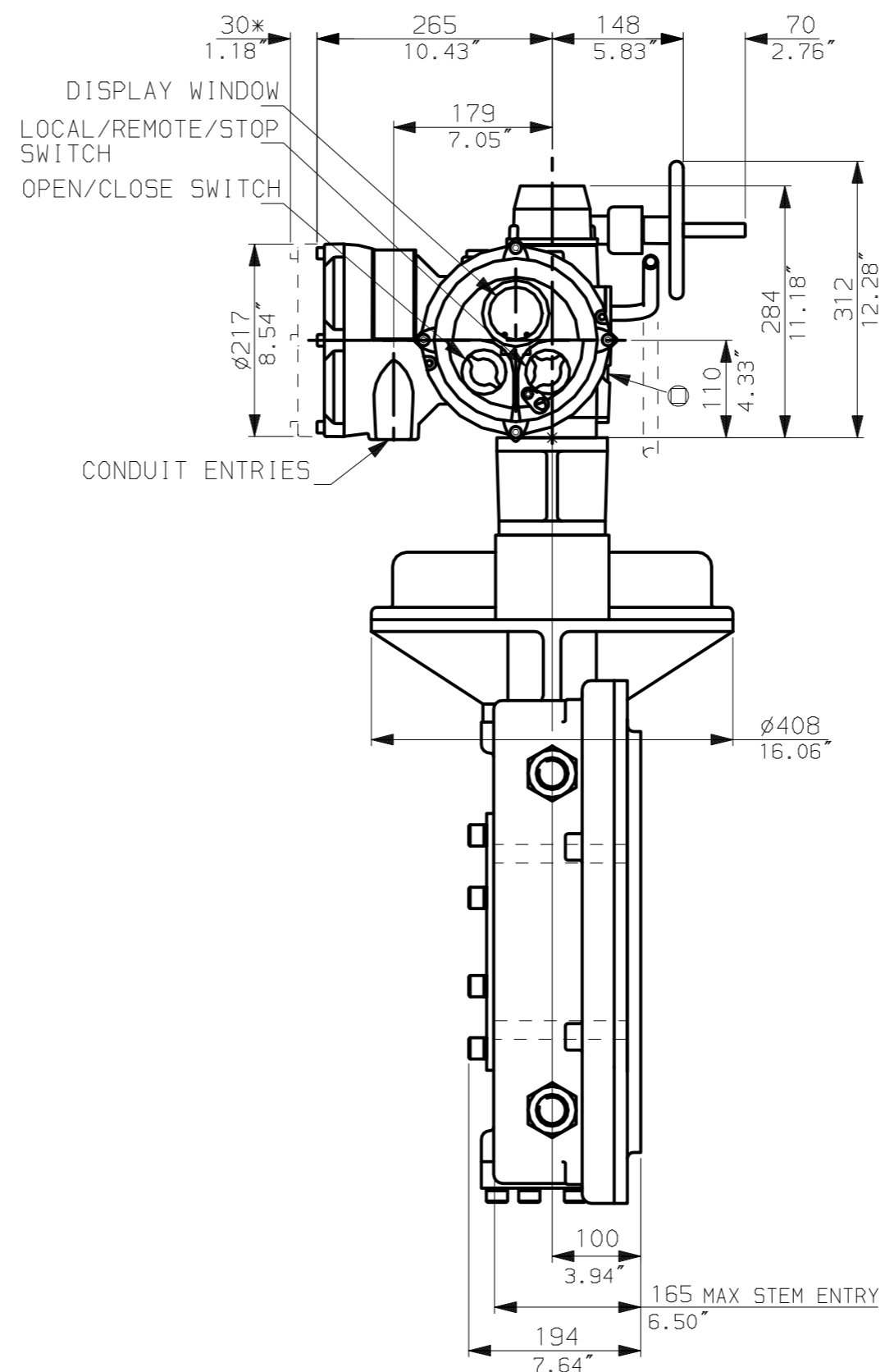
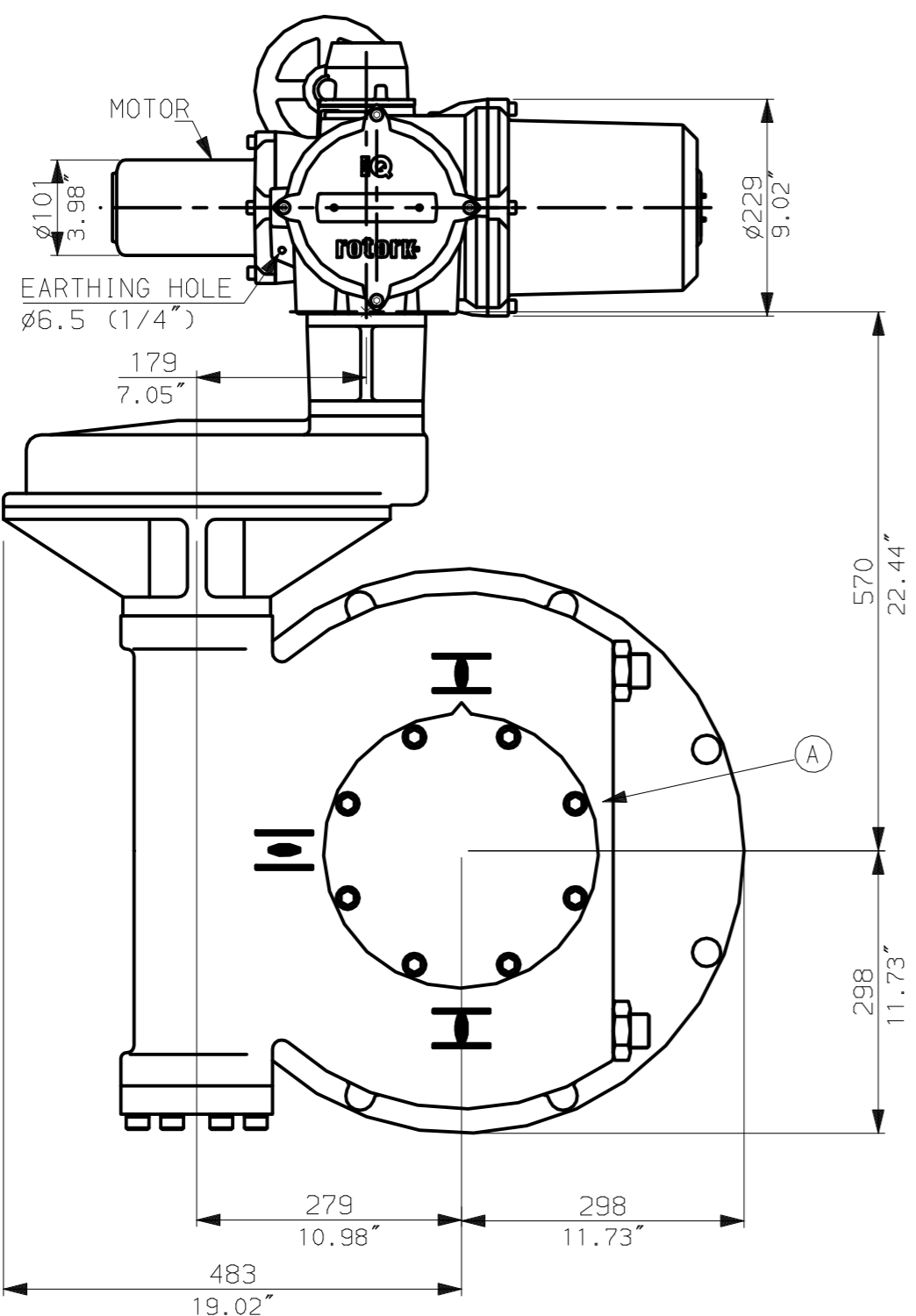


NOTES:
: DIMENSIONS WITH '*' INDICATE COVER REMOVAL ALLOWANCE
: NETT WEIGHT = 294kg (647lbs)
: \odot = OIL FILLER/DRAIN PLUG
: THE INTERFACE PROVIDED FOR MOUNTING THE ACTUATOR OR SECOND STAGE GEARBOX ONTO THE VALVE SHOULD CONFORM TO GOOD ENGINEERING PRACTICES, ENSURING ADEQUATELY TOLERANCED LIMITS FOR PARALLELISM, PERPENDICULARITY AND CONCENTRICITY.

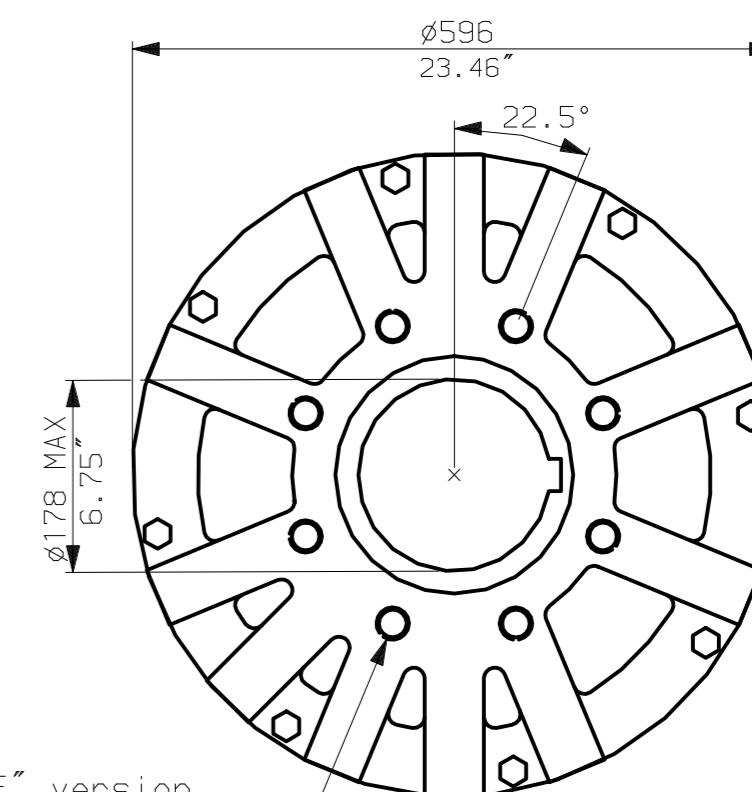
CONDUIT ENTRIES (N.T.S)



Nos.1 & 3 TAPPED 1" NPT
No.2 TAPPED 1 1/2" NPT
STD ALTERNATIVES IF SPECIFIED
2 X M25, 1 X M40
2 X PG16, 1 X PG29



N.B. KEYWAY POS. CAN BE MOVED IN 45° STEPS BY REMOVING 8 SCREWS MARKED (A) AND ROTATING OUTPUT SLEEVE.



"F" version

8 HOLES TAPPED M20 x 30 DP
EQUI-SPACED AS SHOWN ON A
298 PCD (ISO 5211-F30).

"FA" version

8 HOLES TAPPED 3/4" UNC x 1.18" dp
EQUI-SPACED AS SHOWN ON A
11.75" PCD (MSS SP101-FA30).

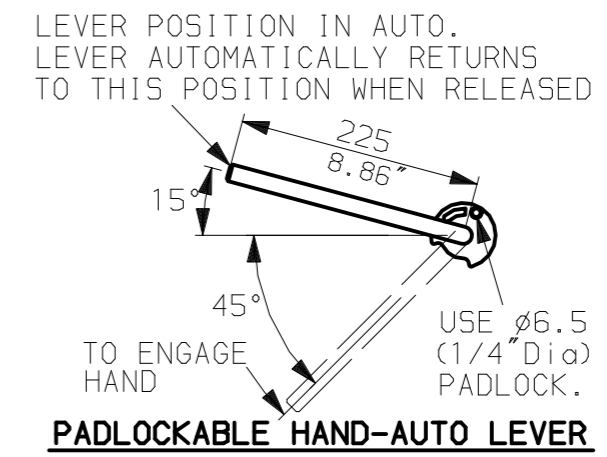
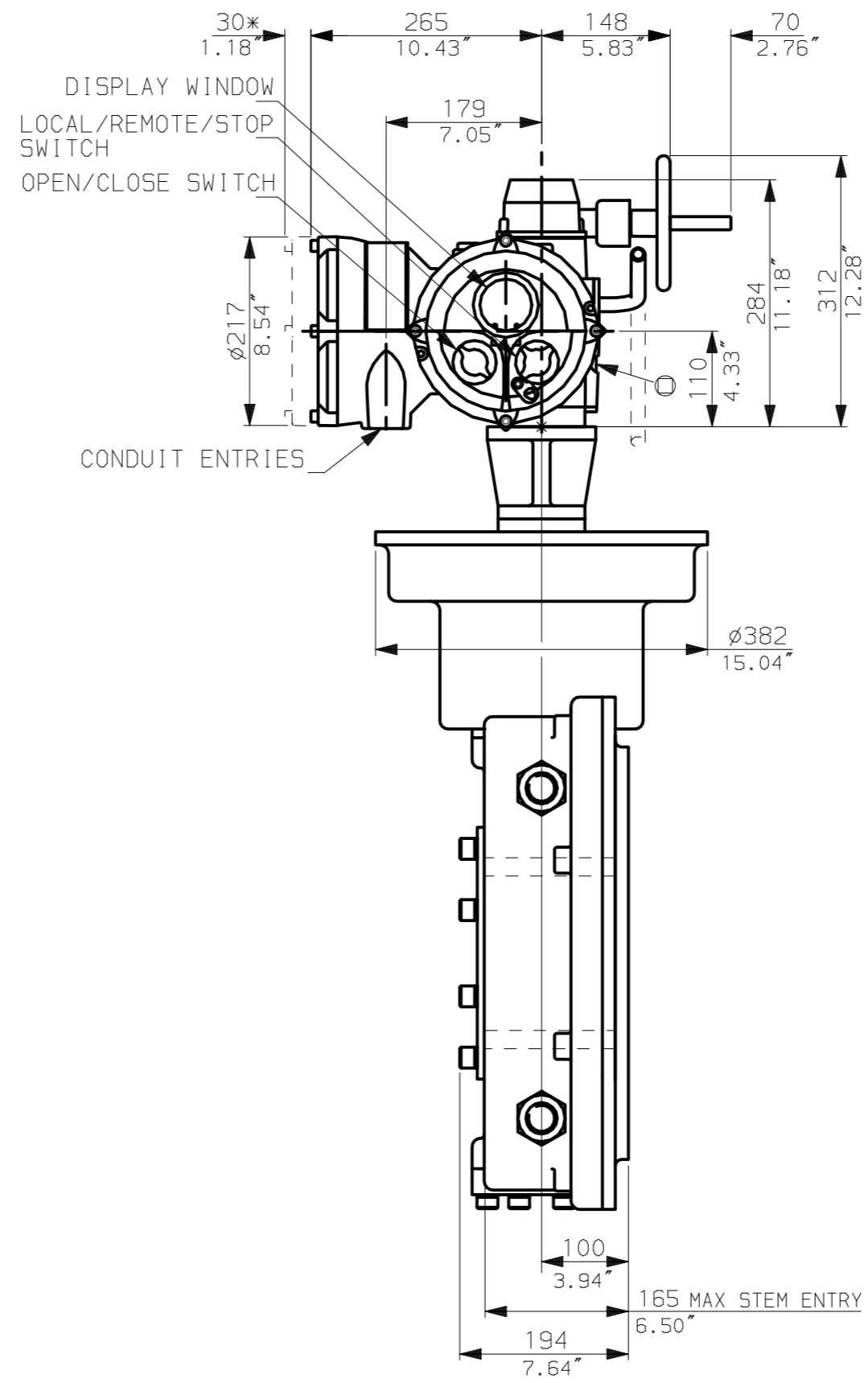
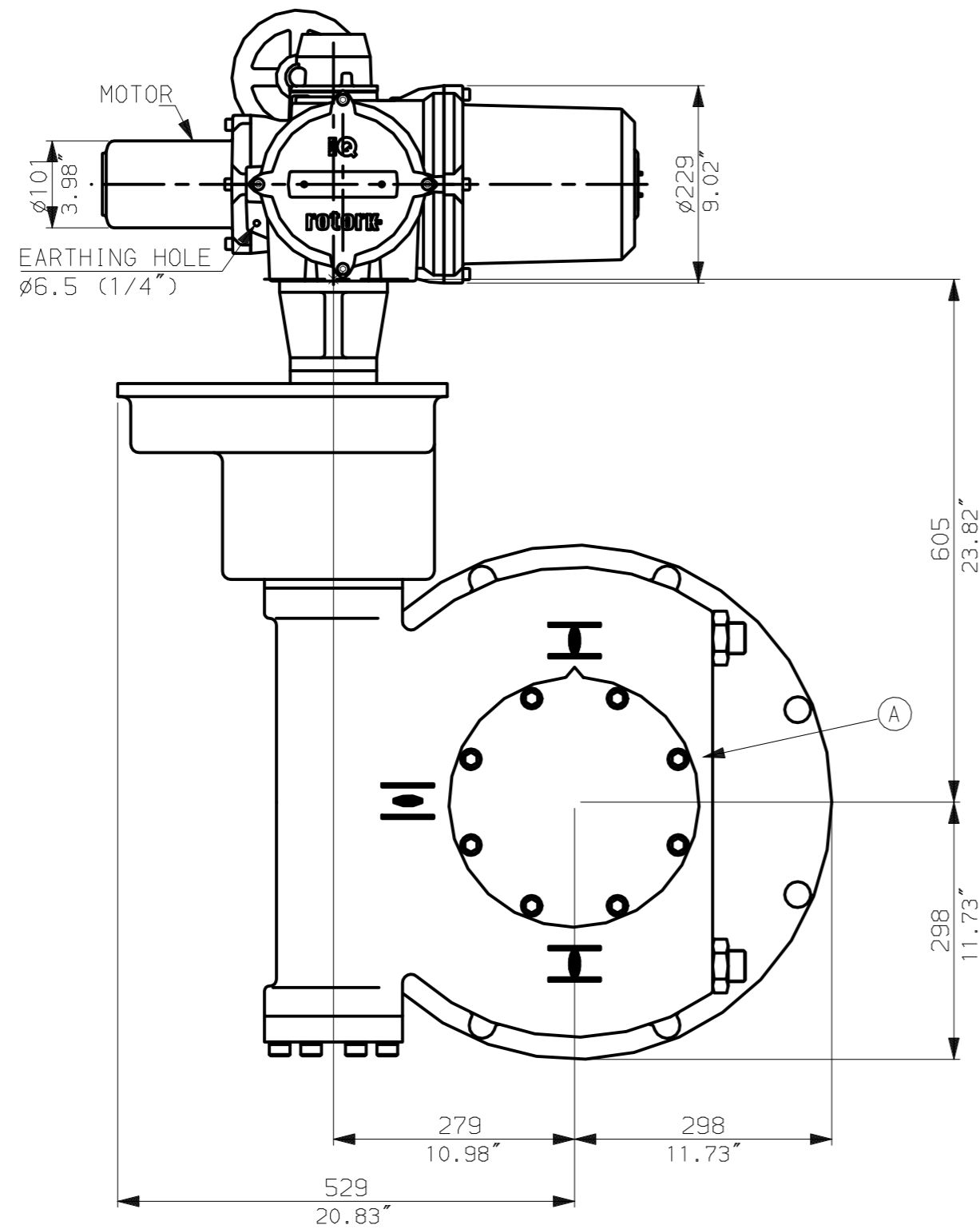
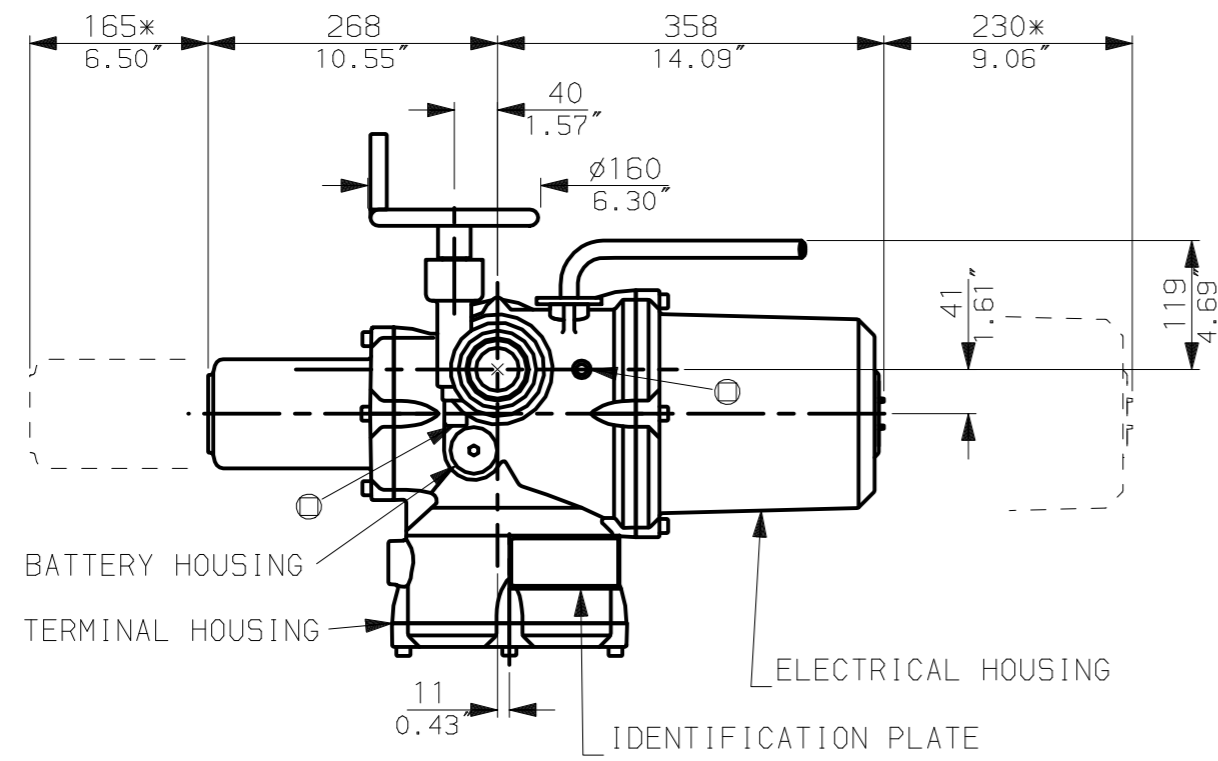
NOTE:
Gearbox is shown with LOW Ratio Input Reducer.
(ie Ratios 180, 240, 360, 480, 540, 720)
See Data Sheet with IW9Rh for HIGH ratio option.

rotork
www.rotork.com

Rotork Controls Ltd.
Bath England, BA1 3JQ.
(Phone 01225-733200)
Rotork Controls Inc.
Rochester, NY 14624
(Phone 585-328-1550)

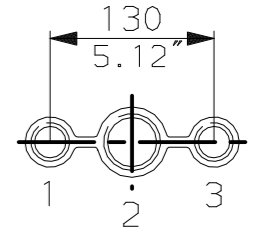
Title IQ10, 12, 18, (+IQS12), SHW, IW (MOW) 9RL, STANDARD DIMENSIONAL DATA		
Drawn CAD	Checked PRE	Ref Data Sheet
Date 150605	Job No IQ1SHW_IW9RL	

02	4.69" corrected from 6.50"
01 Issue	First Issue.
Scale	1:7 THIRD ANGLE PROJECTION
Drawing Number	IQ1SHW_IW9RL



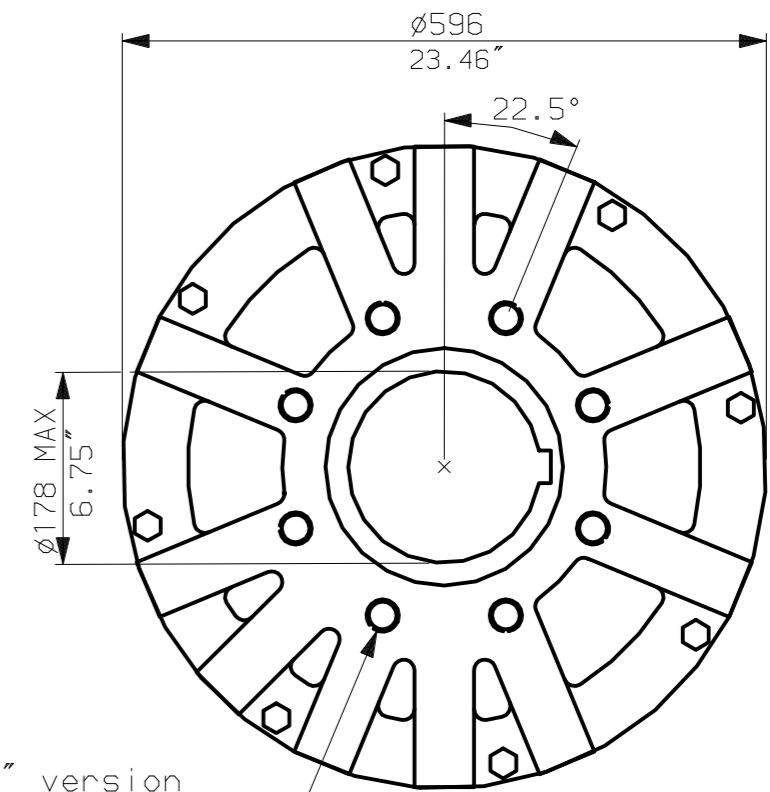
NOTES:
 : DIMENSIONS WITH '*' INDICATE COVER REMOVAL ALLOWANCE
 : NETT WEIGHT = 322kg (708lbs)
 : ϕ = OIL FILLER/DRAIN PLUG
 : THE INTERFACE PROVIDED FOR MOUNTING THE ACTUATOR OR SECOND STAGE GEARBOX ONTO THE VALVE SHOULD CONFORM TO GOOD ENGINEERING PRACTICES, ENSURING ADEQUATELY TOLERANCED LIMITS FOR PARALLELISM, PERPENDICULARITY AND CONCENTRICITY.

CONDUIT ENTRIES (N.T.S)



Nos.1 & 3 TAPPED 1" NPT
 No.2 TAPPED 1 1/2" NPT
 STD ALTERNATIVES IF SPECIFIED
 2 X M25, 1 X M40
 2 X PG16, 1 X PG29

N.B. KEYWAY POS. CAN BE MOVED IN 45° STEPS BY REMOVING 8 SCREWS MARKED (A) AND ROTATING OUTPUT SLEEVE.



"F" version

8 HOLES TAPPED M20 x 30 DP
 EQUI-SPACED AS SHOWN ON A
 298 PCD (ISO 5211-F30).

"FA" version

8 HOLES TAPPED 3/4" UNC x 1.18" dp
 EQUI-SPACED AS SHOWN ON A
 11.75" PCD (MSS SP101-FA30).

NOTE:
 Gearbox is shown with HIGH Ratio Input Reducer.
 (ie Ratios 960, 1080, 1440, 2160, 2520, 3000)
 See Data Sheet with IW9RL for LOW ratio option.

rotork
 www.rotork.com

Rotork Controls Ltd.
 Bath England, BA1 3JQ.
 (Phone 01225-733200)
 Rotork Controls Inc.
 Rochester, NY 14624
 (Phone 585-328-1550)

Title IQ10, 12, 18, (+IQS12), SHW, IW (MOW) 9Rh,		
STANDARD DIMENSIONAL DATA		
Drawn CAD	Checked PRE	Ref Data Sheet
Date 150605	Job No	IQ1SHW_IW9Rh

02	4.69" corrected from 6.50"
01	First Issue.
Scale	1:7 THIRD ANGLE PROJECTION
Drawing Number	IQ1SHW_IW9Rh