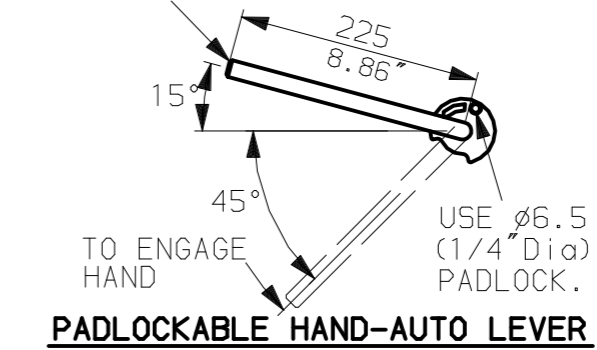
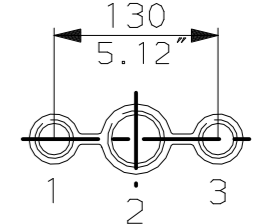


LEVER POSITION IN AUTO.
LEVER AUTOMATICALLY RETURNS
TO THIS POSITION WHEN RELEASED

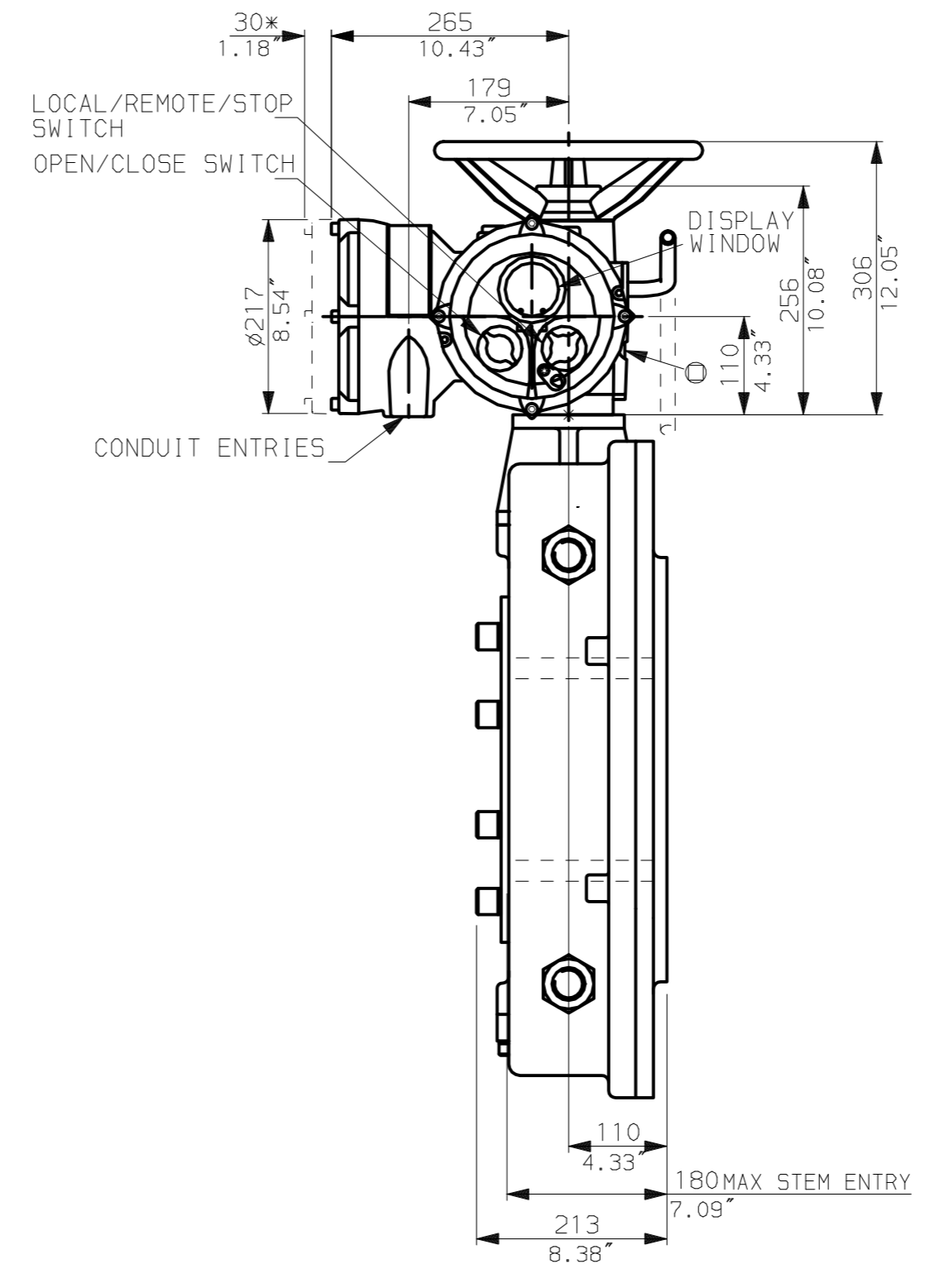
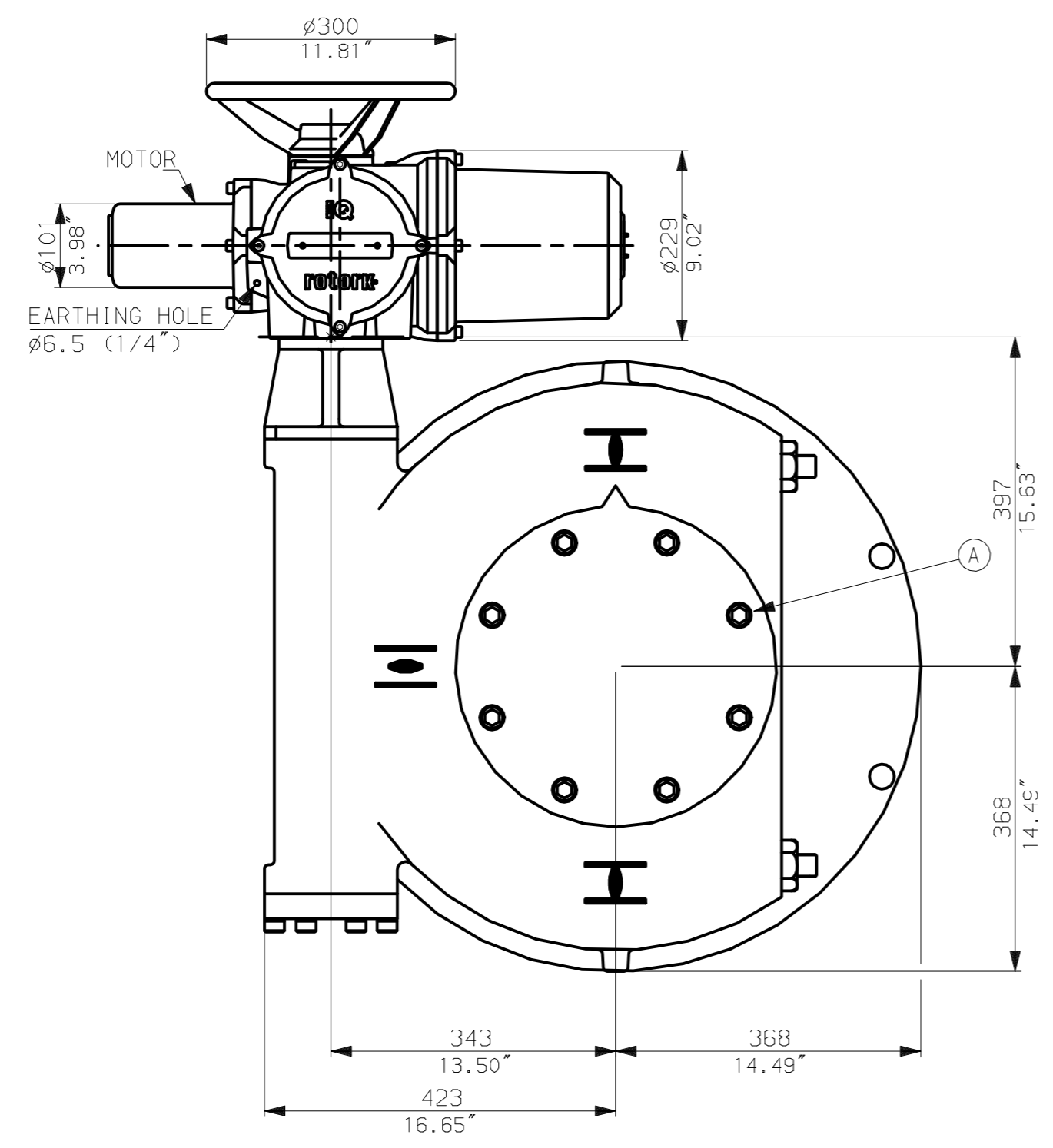


NOTES:
: DIMENSIONS WITH '*' INDICATE COVER REMOVAL ALLOWANCE
: NETT WEIGHT = 362kg (796lbs)
: \odot = OIL FILLER/DRAIN PLUG
: THE INTERFACE PROVIDED FOR MOUNTING THE ACTUATOR OR SECOND STAGE GEARBOX ONTO THE VALVE SHOULD CONFORM TO GOOD ENGINEERING PRACTICES, ENSURING ADEQUATELY TOLERANCED LIMITS FOR PARALLELISM, PERPENDICULARITY AND CONCENTRICITY.

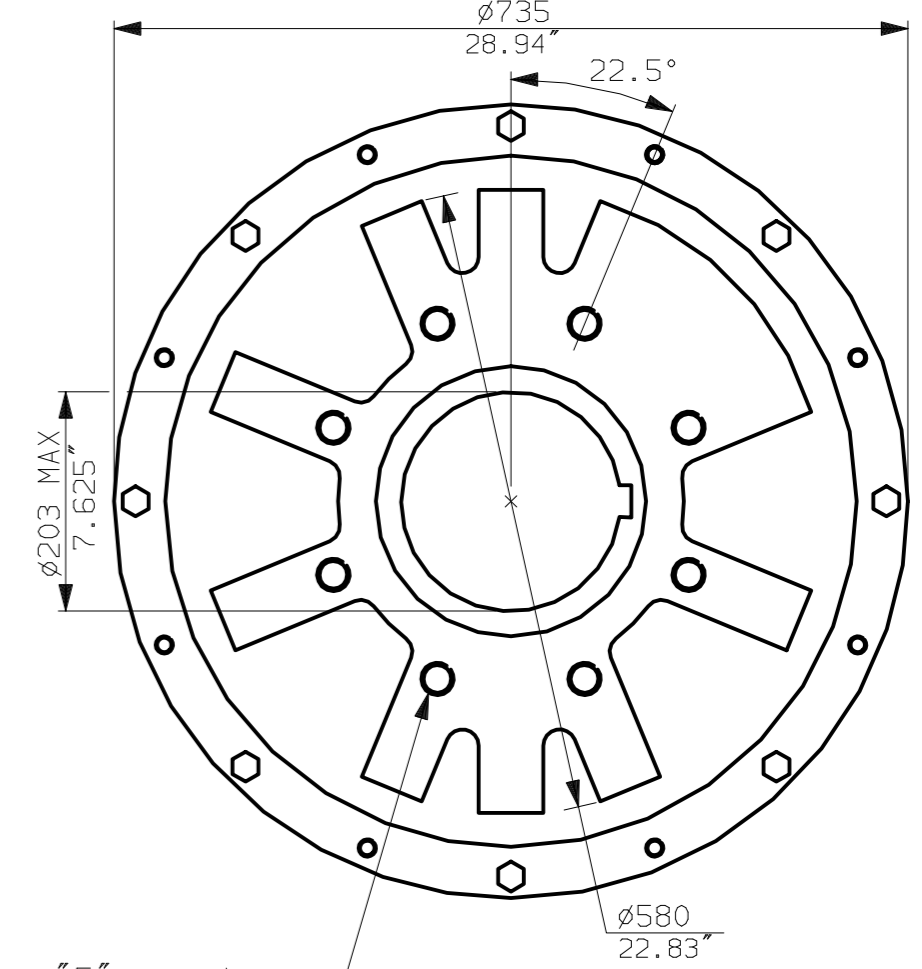
CONDUIT ENTRIES (N.T.S)



Nos.1 & 3 TAPPED 1" NPT
No.2 TAPPED 1 1/2" NPT
STD ALTERNATIVES IF SPECIFIED
2 X M25, 1 X M40
2 X PG16, 1 X PG29



N.B. KEYWAY POS. CAN BE MOVED IN 45° STEPS BY REMOVING 8 SCREWS MARKED (A) AND ROTATING OUTPUT SLEEVE.



"F" version
8 HOLES TAPPED M30 x 36 DEEP, EQUI-SPACED OFF CENTRES ON A 356 P.C.D. (150 5211-F35).

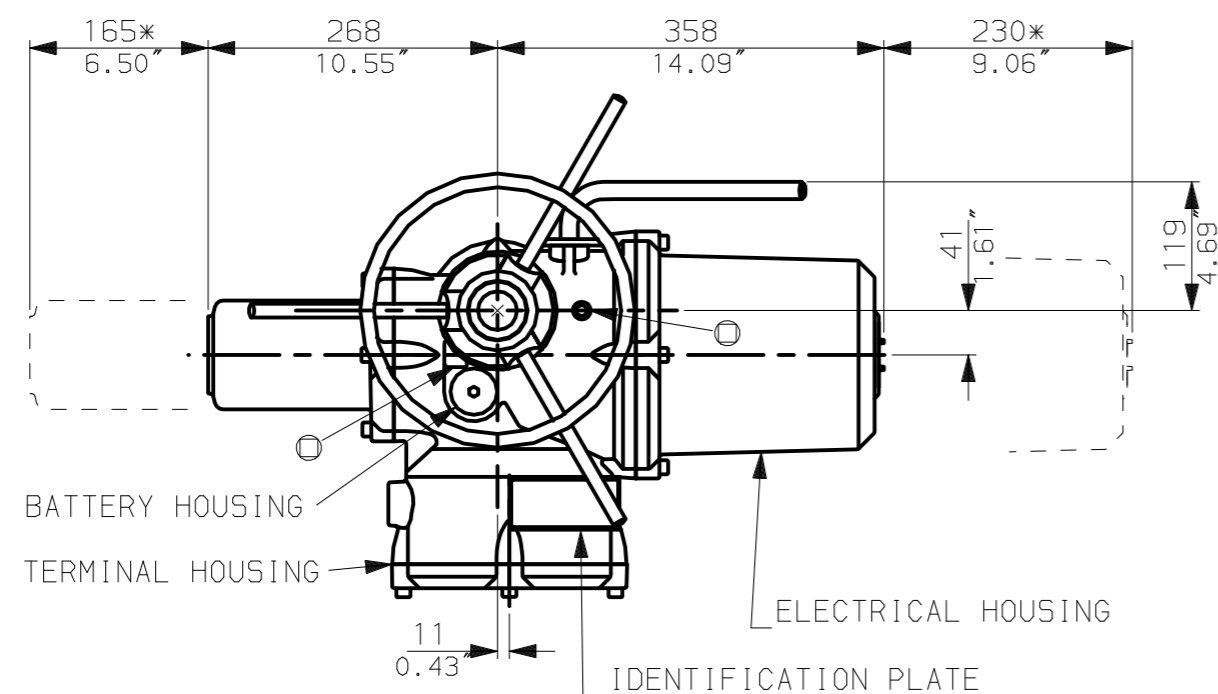
"FA" version
8 HOLES TAPPED 1" UNC x 1.42" dp EQUI-SPACED OFF CENTRES ON A 14" PCD (MSS SP101-FA35).



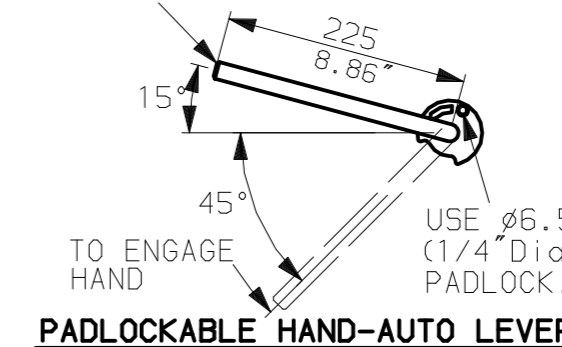
Rotork Controls Ltd.
Bath England, BA1 3JQ.
(Phone 01225-733200)
Rotork Controls Inc.
Rochester, NY 14624
(Phone 585-328-1550)

| | | |
|------------------------------|---------------------|----------------|
| Title IQM10, 12, THW, MOW10, | | |
| STANDARD DIMENSIONAL DATA | | |
| Drawn CAD | Checked PRE | Ref Data Sheet |
| Date 150605 | Job No IQ1THW_MOW10 | |

| | |
|----------------|----------------------------|
| 02 | 4.69" corrected from 6.50" |
| 01 | First Issue. |
| Scale | 1:7 THIRD ANGLE PROJECTION |
| Drawing Number | IQ1THW_MOW10 |

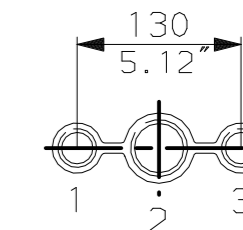


LEVER POSITION IN AUTO.
LEVER AUTOMATICALLY RETURNS
TO THIS POSITION WHEN RELEASED

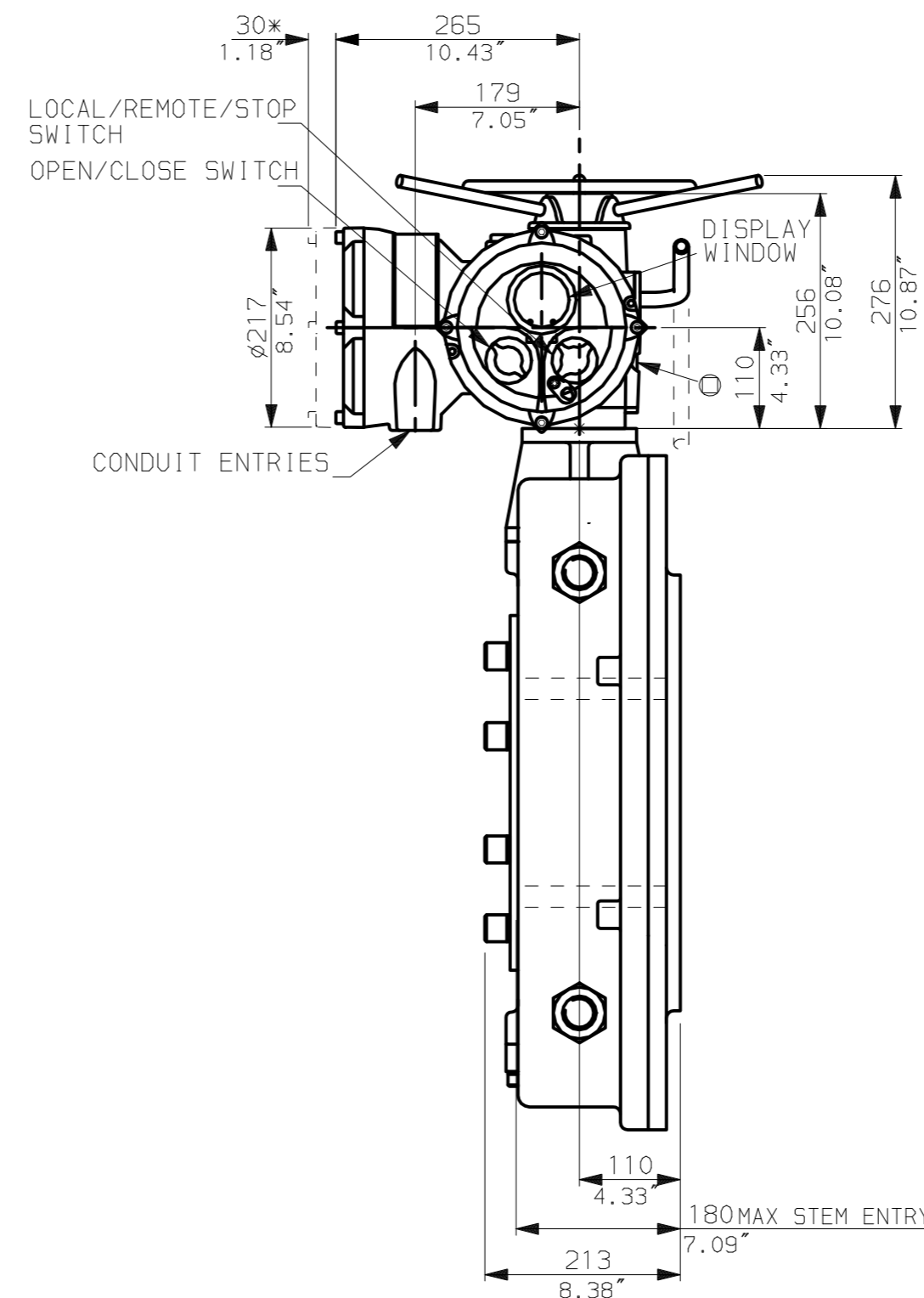
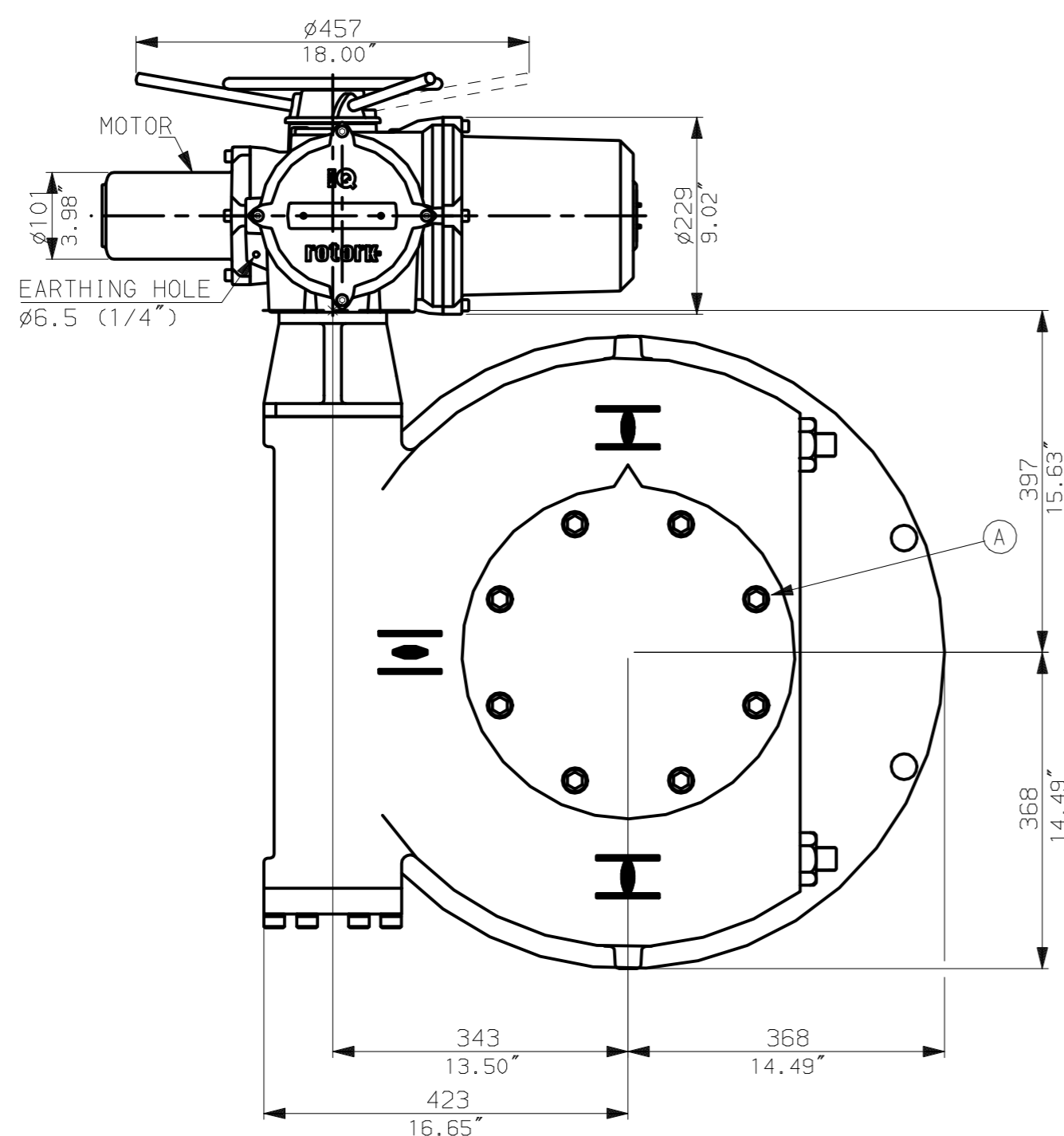


NOTES:
: DIMENSIONS WITH '*' INDICATE COVER REMOVAL ALLOWANCE
: NETT WEIGHT = 362kg (796lbs)
: \odot = OIL FILLER/DRAIN PLUG
: THE INTERFACE PROVIDED FOR MOUNTING THE ACTUATOR OR SECOND STAGE GEARBOX ONTO THE VALVE SHOULD CONFORM TO GOOD ENGINEERING PRACTICES, ENSURING ADEQUATELY TOLERANCED LIMITS FOR PARALLELISM, PERPENDICULARITY AND CONCENTRICITY.

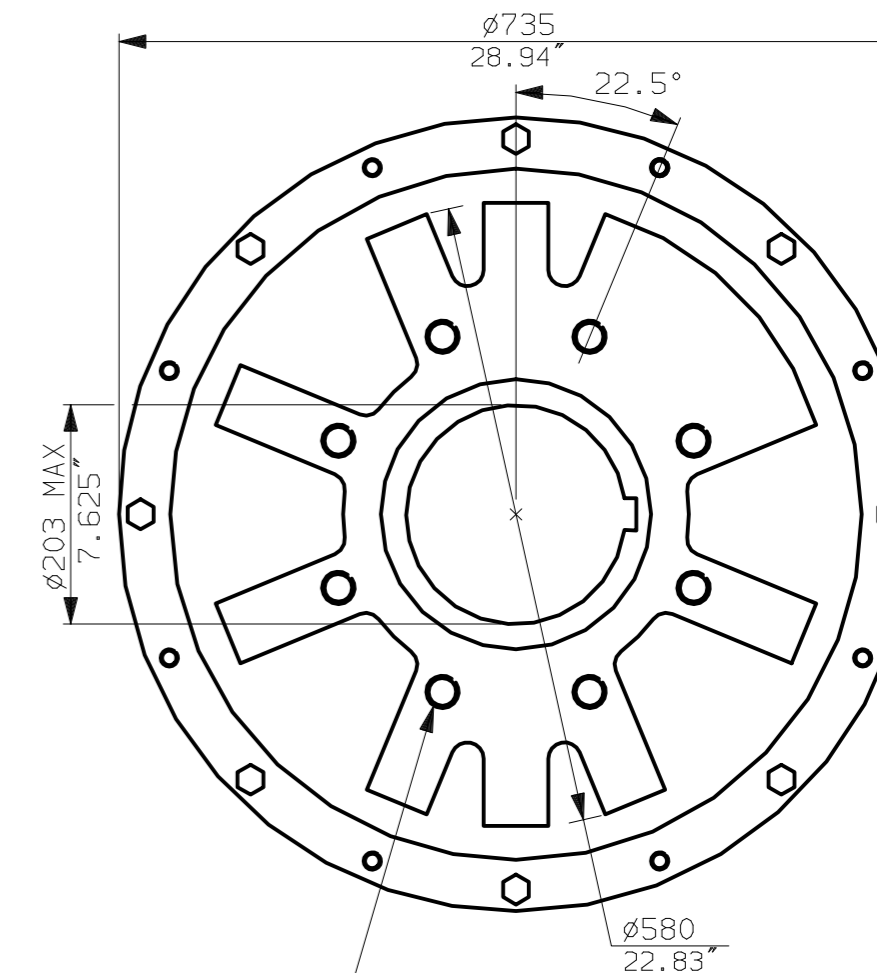
CONDUIT ENTRIES (N.T.S)



Nos.1 & 3 TAPPED 1" NPT
No.2 TAPPED 1 1/2" NPT
STD ALTERNATIVES IF SPECIFIED
2 X M25, 1 X M40
2 X PG16, 1 X PG29



N.B. KEYWAY POS. CAN BE MOVED IN 45° STEPS BY REMOVING 8 SCREWS MARKED (A) AND ROTATING OUTPUT SLEEVE.



"F" version
8 HOLES TAPPED M30 x 36 DEEP, EQUI-SPACED OFF CENTRES ON A 356 P.C.D. (150 5211-F35).

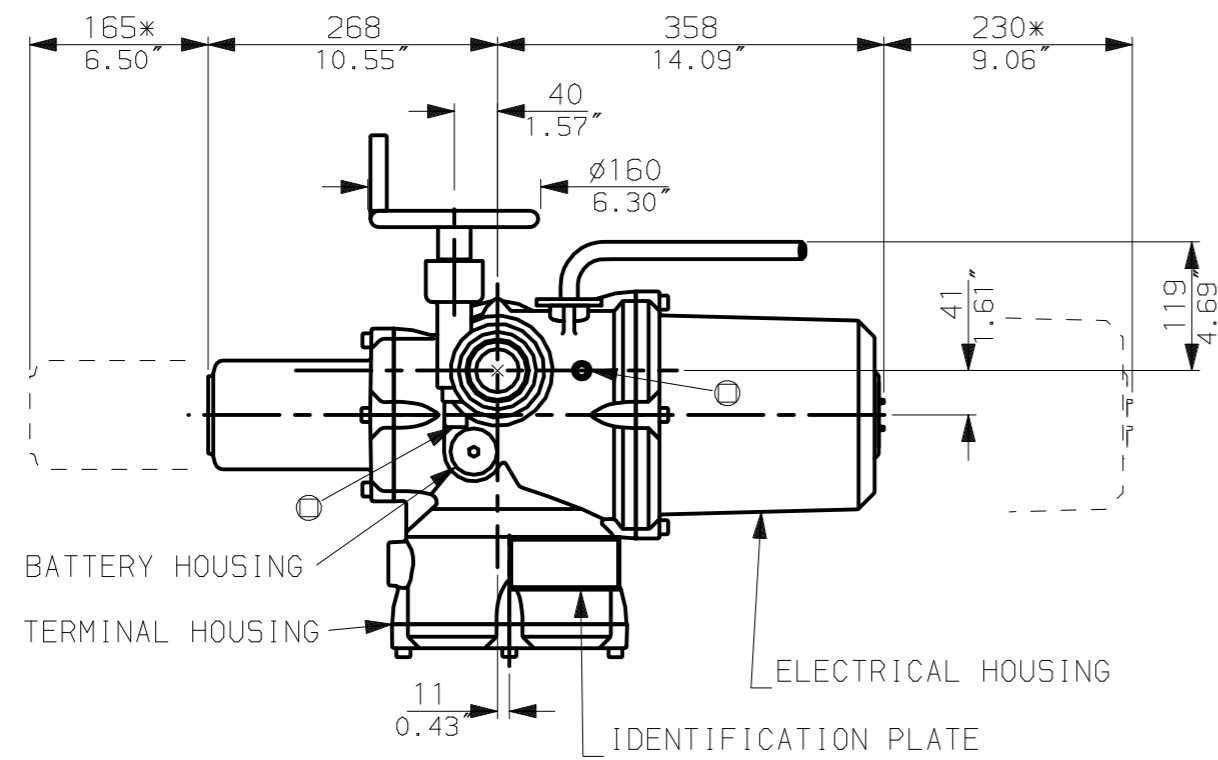
"FA" version
8 HOLES TAPPED 1" UNC x 1.42" dp EQUI-SPACED OFF CENTRES ON A 14" PCD (MSS SP101-FA35).

rotork
www.rotork.com

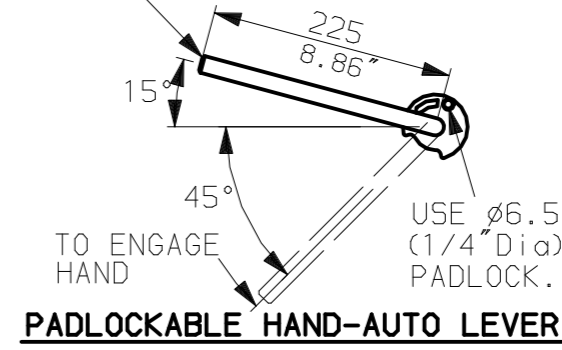
Rotork Controls Ltd.
Bath England, BA1 3JQ.
(Phone 01225-733200)
Rotork Controls Inc.
Rochester, NY 14624
(Phone 585-328-1550)

| | | |
|-------------------------------|----------------------|----------------|
| Title IQM10, 12, LTHW, MOW10, | | |
| STANDARD DIMENSIONAL DATA | | |
| Drawn CAD | Checked PRE | Ref Data Sheet |
| Date 150605 | Job No IQ1LTHW_MOW10 | |

| | |
|----------------|----------------------------|
| 02 | 4.69" corrected from 6.50" |
| 01 | First Issue. |
| Scale | 1:7 THIRD ANGLE PROJECTION |
| Drawing Number | IQ1LTHW_MOW10 |

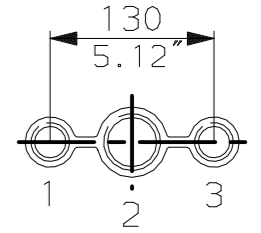


LEVER POSITION IN AUTO.
LEVER AUTOMATICALLY RETURNS
TO THIS POSITION WHEN RELEASED

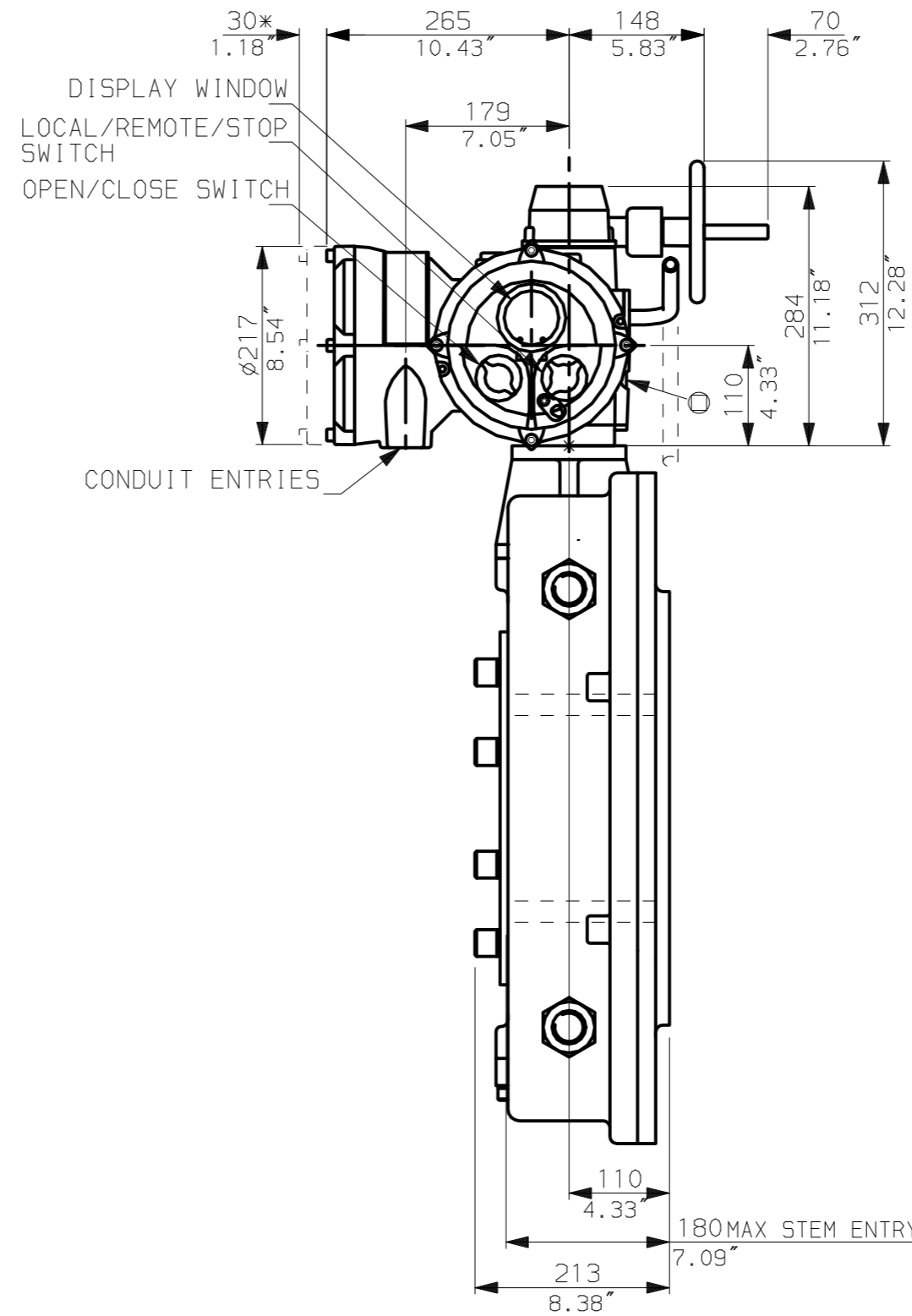
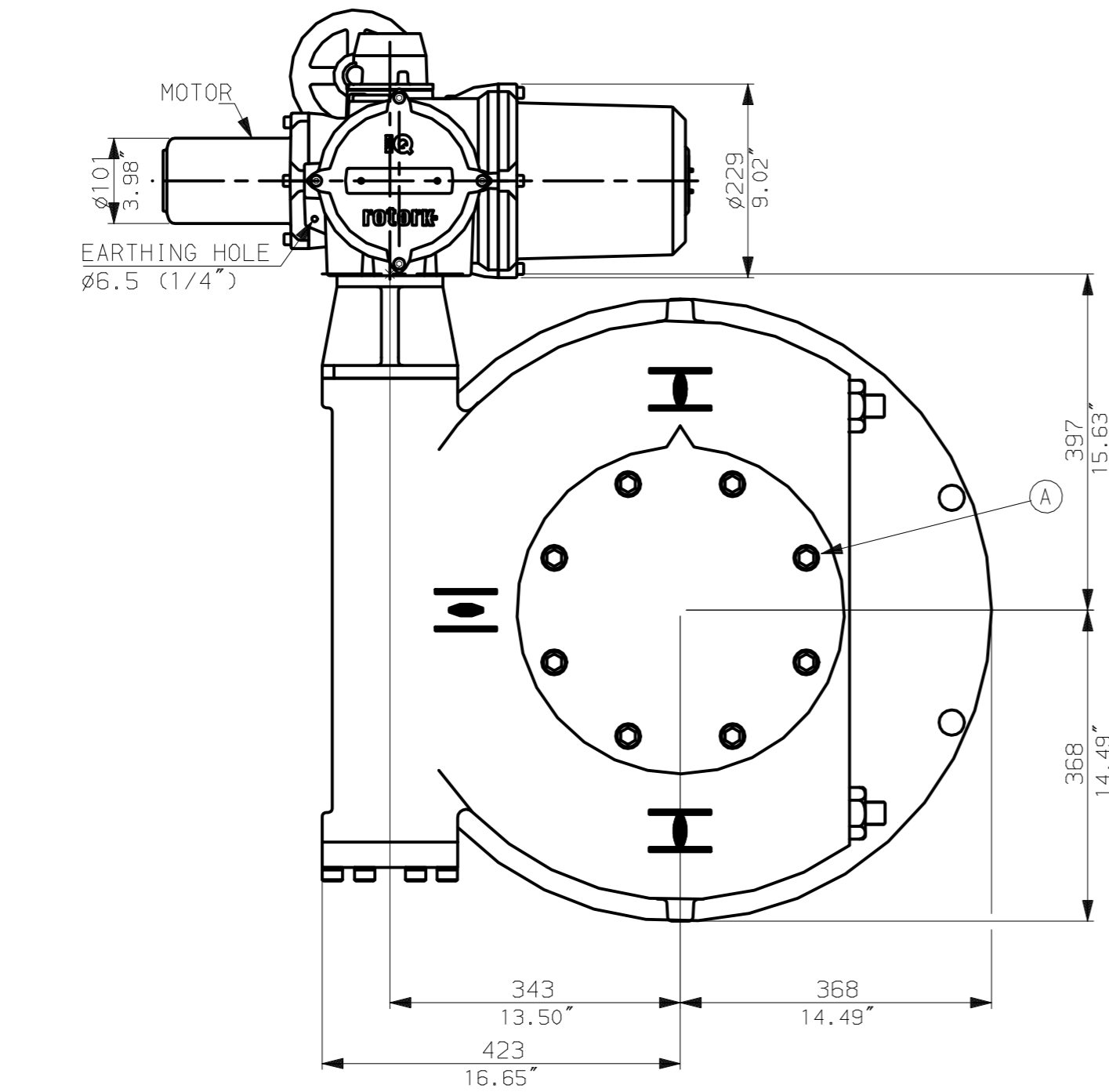


NOTES:
:DIMENSIONS WITH '*' INDICATE
COVER REMOVAL ALLOWANCE
:NETT WEIGHT = 362kg (796lbs)
:⊙ = OIL FILLER/DRAIN PLUG
:THE INTERFACE PROVIDED FOR MOUNTING THE
ACTUATOR OR SECOND STAGE GEARBOX ONTO THE
VALVE SHOULD CONFORM TO GOOD ENGINEERING
PRACTICES, ENSURING ADEQUATELY TOLERANCED
LIMITS FOR PARALLELISM, PERPENDICULARITY
AND CONCENTRICITY.

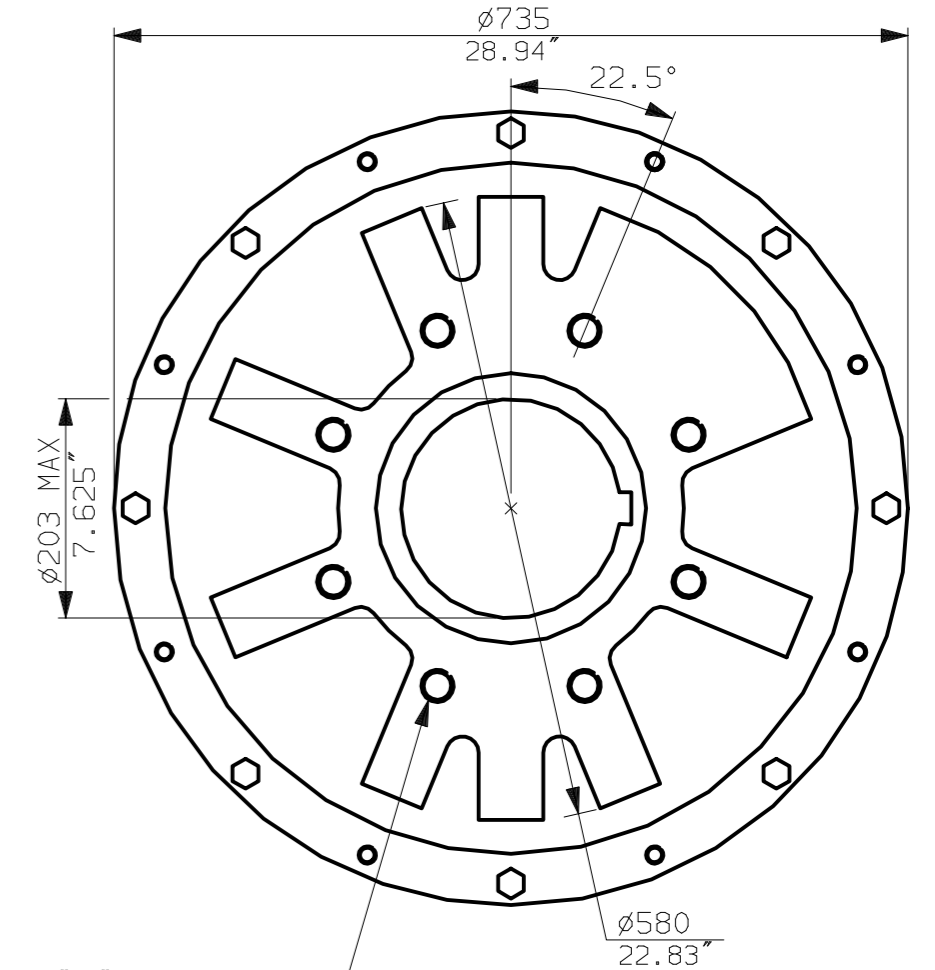
CONDUIT ENTRIES (N.T.S)



Nos.1 & 3 TAPPED 1" NPT
No.2 TAPPED 1 1/2" NPT
STD ALTERNATIVES IF SPECIFIED
2 X M25, 1 X M40
2 X PG16, 1 X PG29



N.B. KEYWAY POS. CAN BE MOVED IN
45° STEPS BY REMOVING 8 SCREWS
MARKED (A) AND ROTATING OUTPUT
SLEEVE.



"F" version
8 HOLES TAPPED M30 x 36 DEEP,
EQUI-SPACED OFF CENTRES ON A
356 P.C.D. (150 5211-F35).

"FA" version
8 HOLES TAPPED 1"UNCx1.42"dp
EQUI-SPACED OFF CENTRES ON A
14" PCD (MSS SP101-FA35).

rotork
www.rotork.com

Rotork Controls Ltd.
Bath England, BA1 3JQ.
(Phone 01225-733200)
Rotork Controls Inc.
Rochester, NY 14624
(Phone 585-328-1550)

| | | |
|------------------------------|---------------------|----------------|
| Title IQM10, 12, SHW, MOW10, | | |
| STANDARD DIMENSIONAL DATA | | |
| Drawn CAD | Checked PRE | Ref Data Sheet |
| Date 150605 | Job No IQ1SHW_MOW10 | |

| | |
|----------------|----------------------------|
| 02 | 4.69" corrected from 6.50" |
| 01 | First Issue. |
| Issue | |
| Scale | 1:7 THIRD ANGLE PROJECTION |
| Drawing Number | IQ1SHW_MOW10 |