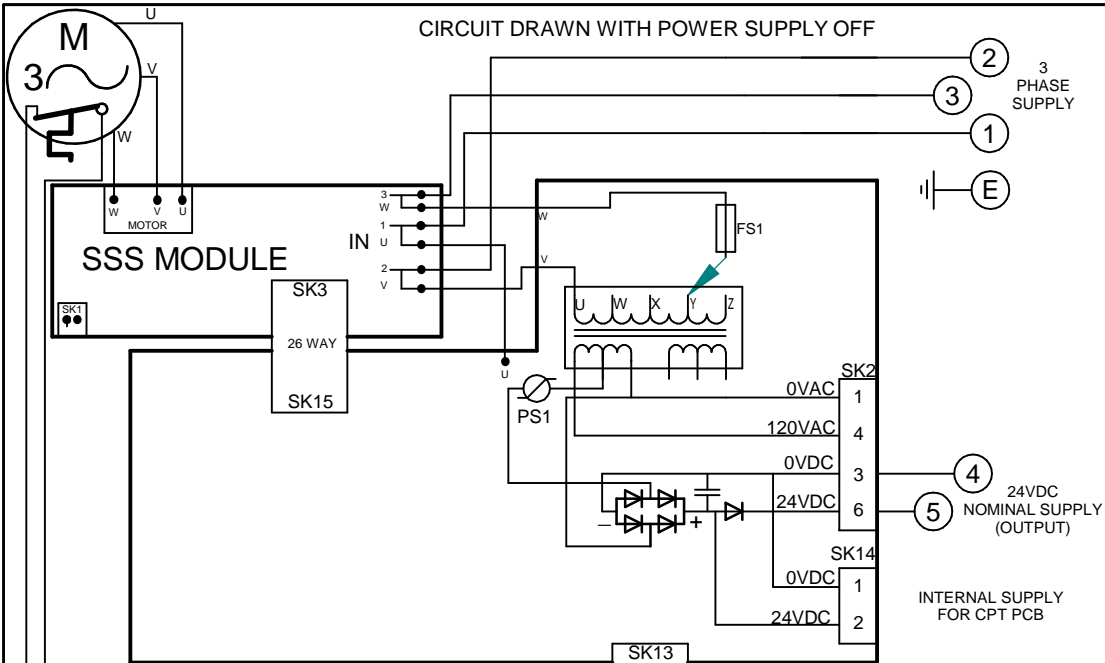


CIRCUIT DRAWN WITH POWER SUPPLY OFF

FOR TYPICAL REMOTE CONTROL  
DETAILS, SEE DOCUMENT  
**RWS100**



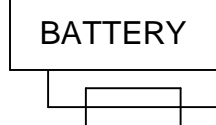
TRANSFORMER TAPPING OPTIONS	
Tap	Nominal 50/60Hz
TYPE 1	
W	220/230
X	380/400
Y	415/420
Z	440/460
FUZE FS1=250mA ANTI-SURGE	
TYPE 2	
W	346/380
X	480/500
Y	240/240
Z	550/575
FUZE FS1=250mA ANTI-SURGE	

REFER TO SHEET 2 FOR NOTES  
& OPTION PCB'S IF FITTED

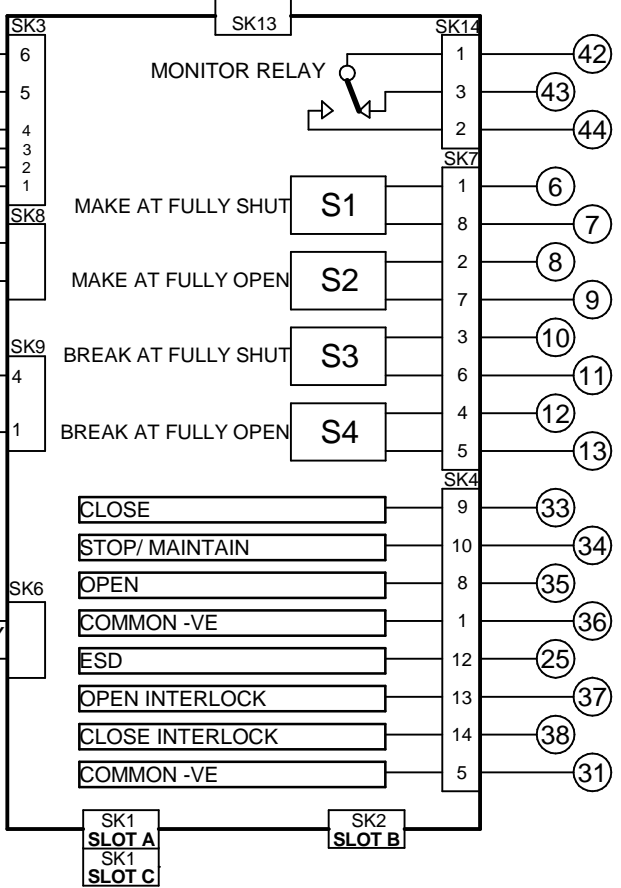
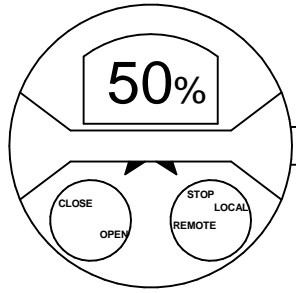
THE ACTUATOR MUST BE  
PROTECTED USING SUITABLY  
RATED HIGH SPEED  
SEMI-CONDUCTOR FUSES ON THE  
INCOMING SUPPLY.

SUGGESTED FUSES :-

- IQ10-20:10 Amp FERRAZ G330010
- IQ25-35:20 Amp FERRAZ K330013
- ALTERNATIVES =
- IQ10-20:10 Amp SIBA 50-179-06/10A
- IQ25-35:20 Amp SIBA 50-179-06/20A
- OR EQUIVALENT PROTECTIVE  
DEVICE.



FS2 (IF FITTED) 100mA



Iss	Date	Chkd	Revision Details
1	080914	JC1	First Issue.
2	220715	JC1	Minor pictoral corrections
3	130616	PW	Updated notes on page 2.
4	091117	WHE	Foundation Fieldbus publication correction.

**www.rotork.com**

ROTORK CONTROLS LTD  
BATH, BA1 3JQ  
ENGLAND  
Tel:01225-733200

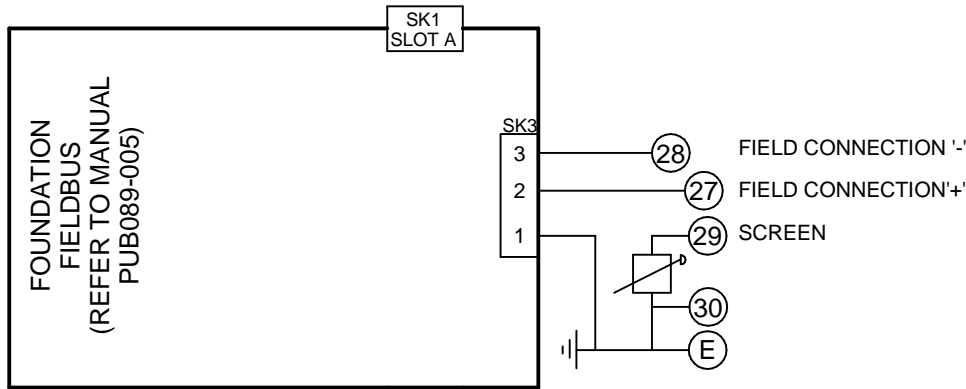
ROTORK CONTROLS INC  
ROCHESTER  
NY 14624, USA  
Tel:585-247-2304

IQM + CPT + CTT + FOUNDATION FIELDBUS  
SINGLE CHANNEL

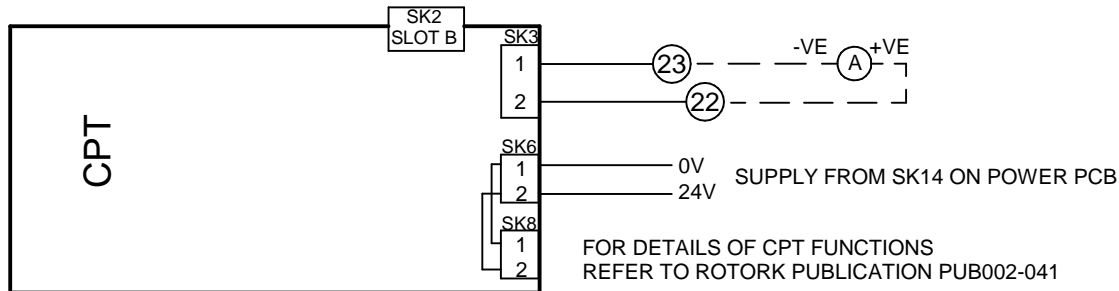
Drawn by: PJW  
Date : 080914  
Base WD: 202F2000  
Job No : --  
MI No : --

Circuit Diagram Number		Issue No	Sheet
<b>202F2000</b>		<b>4</b>	<b>1</b>
B1	C1	B2	C2

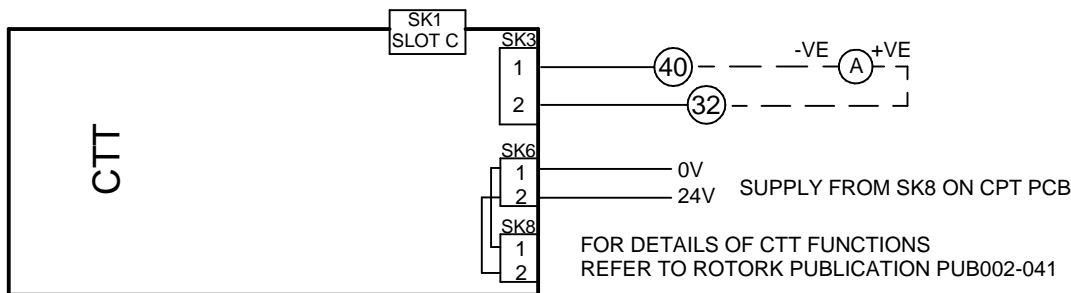
## SLOT A



## SLOT B



## SLOT C



### NOTES

#### 1.FUSES:

- PS1 is a self-resetting fuse.
- Refer to publication PUB002-039 for approved fuses FS1 and FS2.

#### 2.REMOTE CONTROL:

- For typical remote control circuits refer to:
  - RWS indicated or PUB002-041.
- For DC and AC control, connect -ve/0V to terminal 36.
- (For negative switch / positive common, refer to RWS indicated).
- Control signal threshold voltages:
  - DC: "on"  $\geq 16V_{dc}$  / "off"  $\leq 8V_{dc}$ , max 60Vdc.
- Control signal duration to be 100ms minimum.
- Maximum current drawn from remote control signals is:
  - 8mA at 24Vdc .
- Supply provided on terminals 4 & 5:
  - Intended for remote control.
  - Max external load 5W at 24Vdc

#### 3.INDICATION:

- For typical position, status and alarm indication see PUB002-041.
- “S” contacts are user configurable and are shown in their default setting.
- Refer to PUB002-040 for functions and configuration instructions.
- Monitor Relay indicates actuator availability for remote control (shown “unavailable”). It can be configured to exclude local/remote selection.
- Refer to PUB002-040 for monitored functions and configuration instructions.
- Voltage applied to indication contacts must not exceed 150Vac
- Individual Switch current must not exceed 3.5A inductive, 5A resistive and no more than 8A in total for all 4 contacts.

#### 4.BATTERY:

- Battery maintains local and remote “S” contact indication only.
- Refer to installation manual for approved replacement battery types.