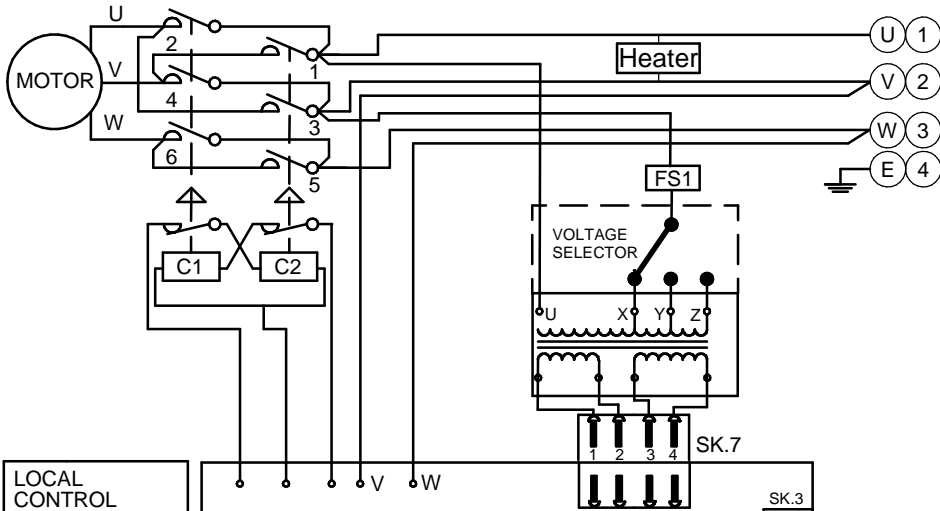


CIRCUIT DRAWN WITH  
POWER SUPPLY OFF

THREE  
PHASE  
SUPPLY



TRANSFORMER TAPPING

TAP	NOM 50/60HZ	50HZ	60HZ
X	220/230	176-242	198-259
Y	380/400	304-418	342-446
Z	440/460	352-484	396-517

FS1 - See ROMPAK PUB008-006 Installation and Maintenance Manual

NOTE

FOR TYPICAL REMOTE CONTROL INDICATING, MONITORING AND ALARM CIRCUITS SEE PUBLICATION DOC862

MAX EXTERNAL LOAD ON SIR RELAYS TO BE 5A. MAX VOLTAGE 120V AC/DC

MAX EXTERNAL LOAD ON TERMINAL 27 & 28 TO BE 3W

CONTROL SIGNAL THRESHOLD VOLTAGES:

- MAX 60V DC
- TO BE MINIMUM 'ON' 14V DC AT 1mA
- MAXIMUM 'OFF' = 3V
- MINIMUM CONTROL SIGNAL DURATION TO BE 300mS.

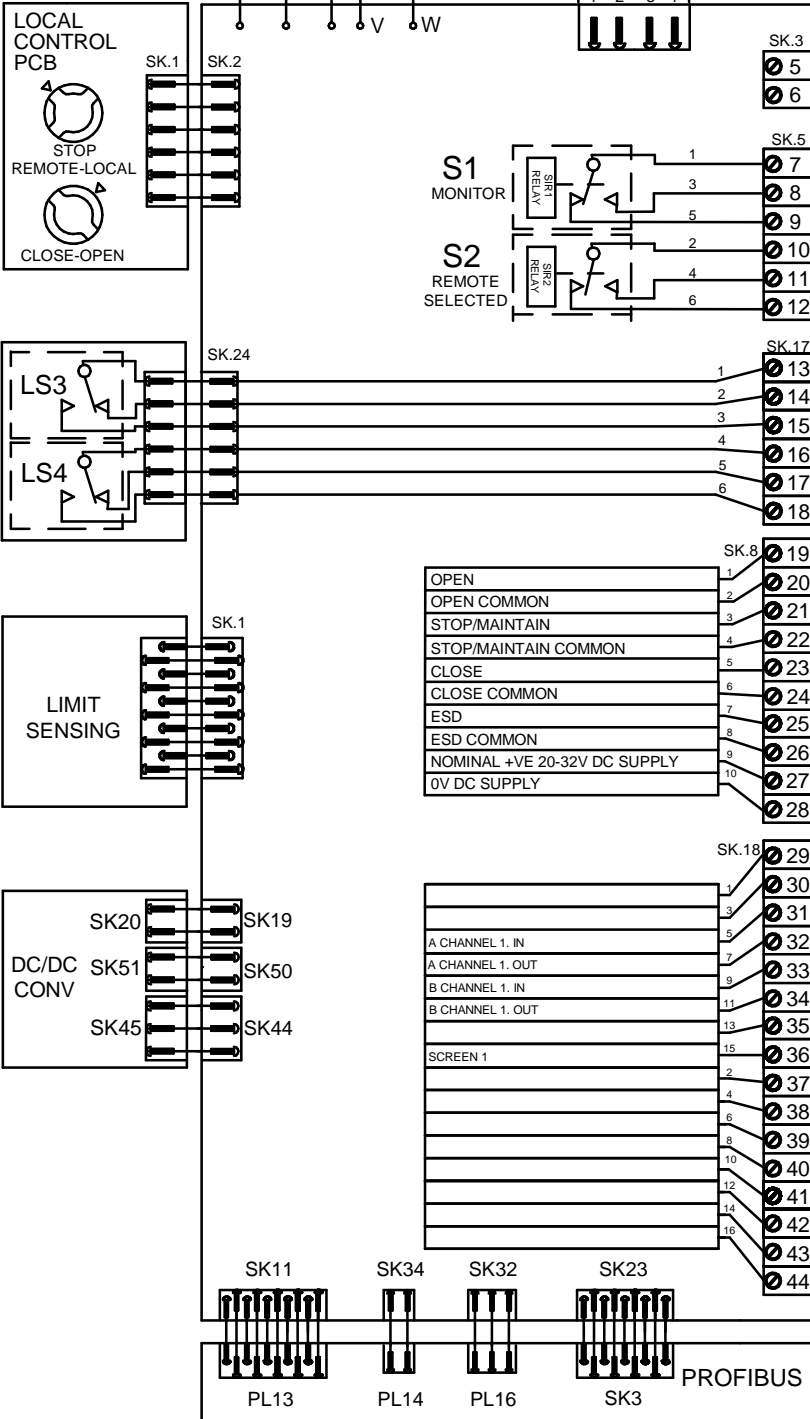
CURRENT DRAWN FROM EACH REMOTE CONTROL SIGNAL IS 5mA ON 24V DC

LS3 / LS4  
MAXIMUM CURRENT 3A MAXIMUM VOLTAGE 120V AC/DC

ACTUATOR CONFIGURATION VIA DIL SWITCH SW2

REFER TO INSTALLATION INSTRUCTIONS FOR DIL SWITCH SELECTION

NOT USED



Iss	Date	Chkd	Revision Details
1	160414		First Issue

**www.rotork.com**

ROTORK CONTROLS LTD  
BATH, BA1 3JQ  
ENGLAND  
Tel:01225-733200

ROTORK CONTROLS INC  
ROCHESTER  
NY 14624, USA  
Tel:585-247-2304

ROMPAK 3PH - NO TORQUE SWITCHES +PROFIBUS

Drawn by: VYA  
Date : 16-Apr-14  
Base WD: R200-600  
Job No : - -  
MI No : - -

Circuit Diagram No	Issue No
<b>R200-600</b>	<b>1</b>