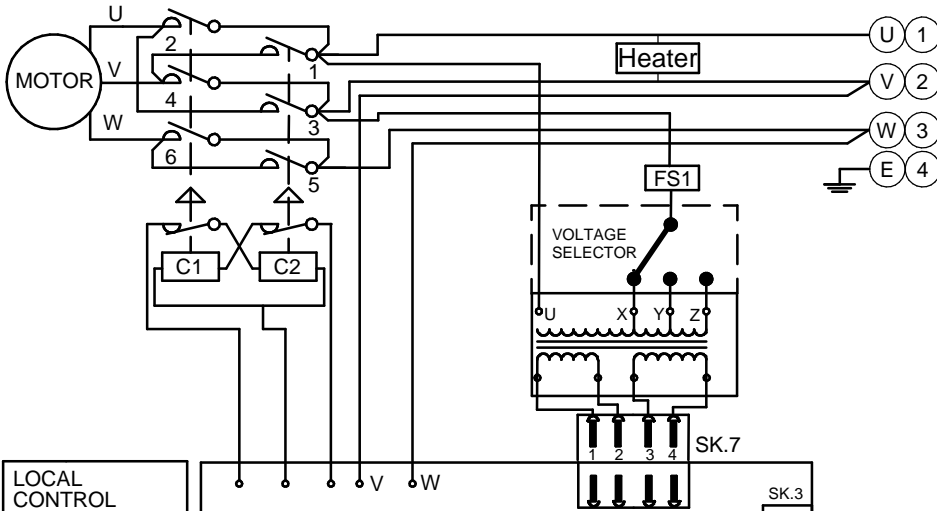


CIRCUIT DRAWN WITH
POWER SUPPLY OFF

THREE
PHASE
SUPPLY



TRANSFORMER TAPPING

TAP	NOM 50/60HZ	50HZ	60HZ
X	220/230	176-242	198-259
Y	380/400	304-418	342-446
Z	440/460	352-484	396-517

FS1 - See ROMPAK PUB008-006 Installation and Maintenance Manual

NOTE

FOR TYPICAL REMOTE CONTROL INDICATING, MONITORING AND ALARM CIRCUITS SEE PUBLICATION DOC862

MAX EXTERNAL LOAD ON SIR RELAYS TO BE 5A. MAX VOLTAGE 120V AC/DC

MAX EXTERNAL LOAD ON TERMINAL 27 & 28 TO BE 3W

CONTROL SIGNAL THRESHOLD VOLTAGES:

- MAX 60V DC
- TO BE MINIMUM 'ON' 14V DC AT 1mA
- MAXIMUM 'OFF' = 3V
- MINIMUM CONTROL SIGNAL DURATION TO BE 300mS.

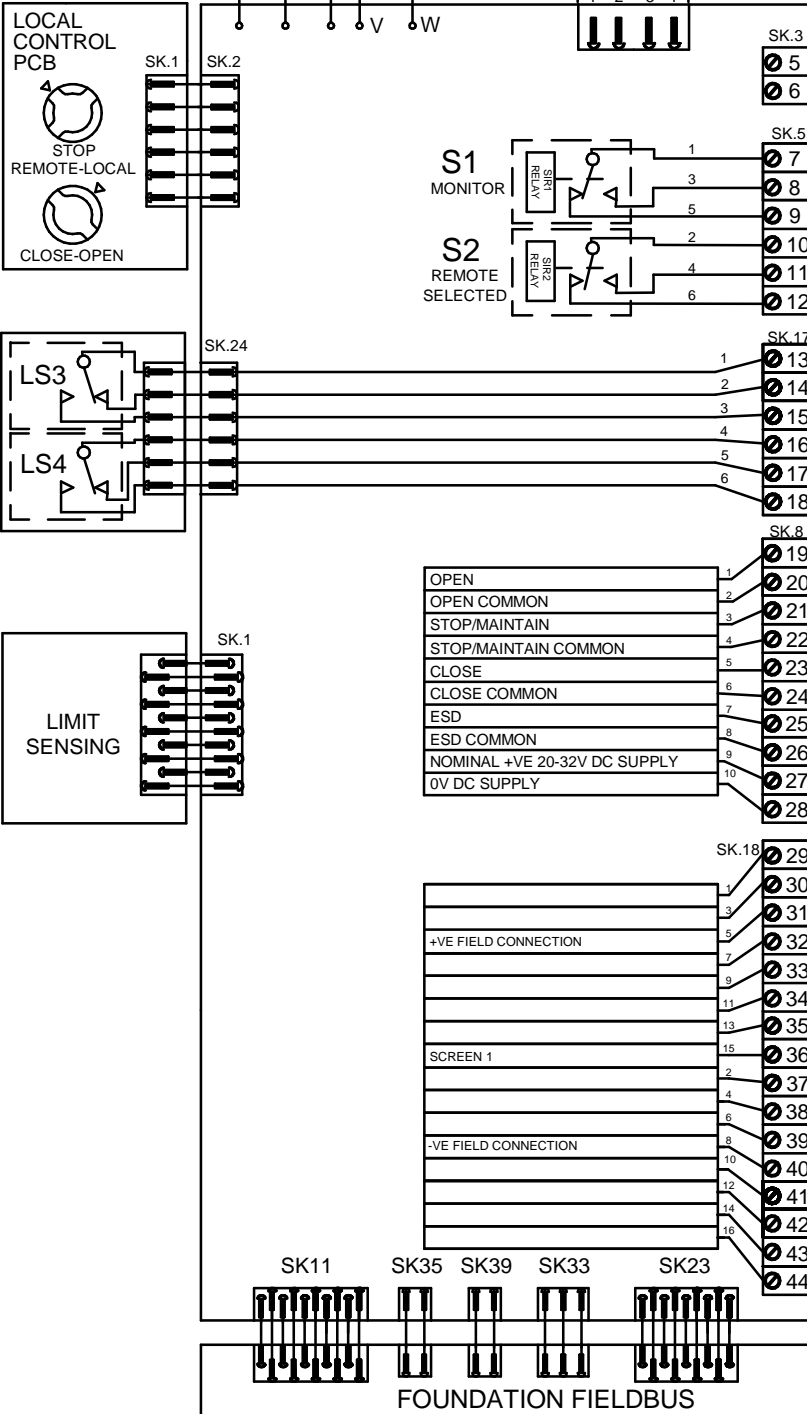
CURRENT DRAWN FROM EACH REMOTE CONTROL SIGNAL IS 5mA ON 24V DC

LS3 / LS4
MAXIMUM CURRENT 3A MAXIMUM VOLTAGE 120V AC/DC

ACTUATOR CONFIGURATION VIA DIL SWITCH SW2

REFER TO INSTALLATION INSTRUCTIONS FOR DIL SWITCH SELECTION

NOT USED



1	OPEN	20
2	OPEN COMMON	21
3	STOP/MAINTAIN	22
4	STOP/MAINTAIN COMMON	23
5	CLOSE	24
6	CLOSE COMMON	25
7	ESD	26
8	ESD COMMON	27
9	NOMINAL +VE 20-32V DC SUPPLY	28
10	0V DC SUPPLY	

1		29
2		30
3		31
4		32
5	+VE FIELD CONNECTION	33
6		34
7		35
8		36
9		37
10		38
11		39
12		40
13		41
14		42
15	SCREEN 1	43
16		44
17		
18		
19		
20		
21		
22		
23		
24		
25		
26		
27		
28		
29		
30		
31		
32		
33		
34		
35		
36		
37		
38		
39		
40		
41		
42		
43		
44		

Iss	Date	Chkd	Revision Details
1	240314		First Issue

www.rotork.com

ROTORK CONTROLS LTD
BATH, BA1 3JQ
ENGLAND
Tel:01225-733200

ROTORK CONTROLS INC
ROCHESTER
NY 14624, USA
Tel:585-247-2304

ROMPAK 3PH - NO TORQUE SWITCHES+FOUNDATION FIELDBUS

Drawn by: VYA
Date : 24-Mar-14
Base WD: R200-800
Job No : - -
MI No : - -

Circuit Diagram No	Issue No
R200-800	1