

CIRCUIT DRAWN WITH  
POWER SUPPLY OFF

FOR TYPICAL REMOTE CONTROL  
DETAILS SEE DOCUMENT  
**No RWS**

TRANSFORMER TAPPING OPTIONS

TYPE 1

TAP	NOM 50/60HZ	50HZ	60HZ
W	220/230	176-242	198-259
X	380/400	304-418	342-446
Y	415/420	332-457	374-487
Z	440/460	352-484	396-517

FUSE FS1 - 250mA ANTI-SURGE

TYPE 2

TAP	NOM 50/60HZ	50HZ	60HZ
W	346/380	285-388	321-419
X	480/500	406-552	432-564
Y	240/240	192-261	216-282
Z	550/575	445-605	501-654

FUSE FS1 - 250mA ANTI-SURGE

TYPE 3

TAP	NOM 50/60HZ	50HZ	60HZ
X	660/660-690	534-726	600-726
Y	690/---	558-759	

FUSE FS1 - 150mA ANTI-SURGE

ALL TRANSFORMER TYPES - PS1 SELF  
RESETTING  
FUSE

NOTE

REFER TO PUBLICATION E170E FOR  
APPROVED FUSES FS1 AND FS2.

MAX EXTERNAL LOAD ON TERMINALS  
4 & 5 TO BE 5W.

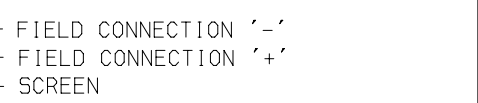
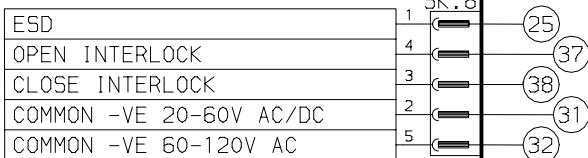
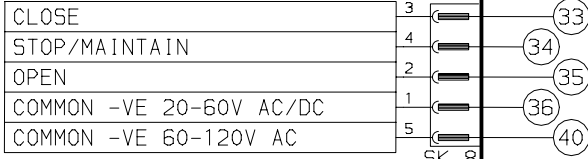
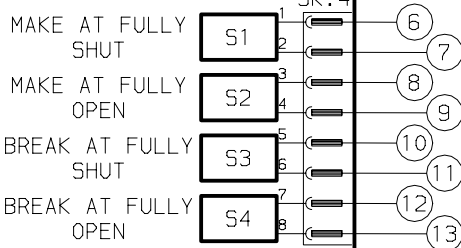
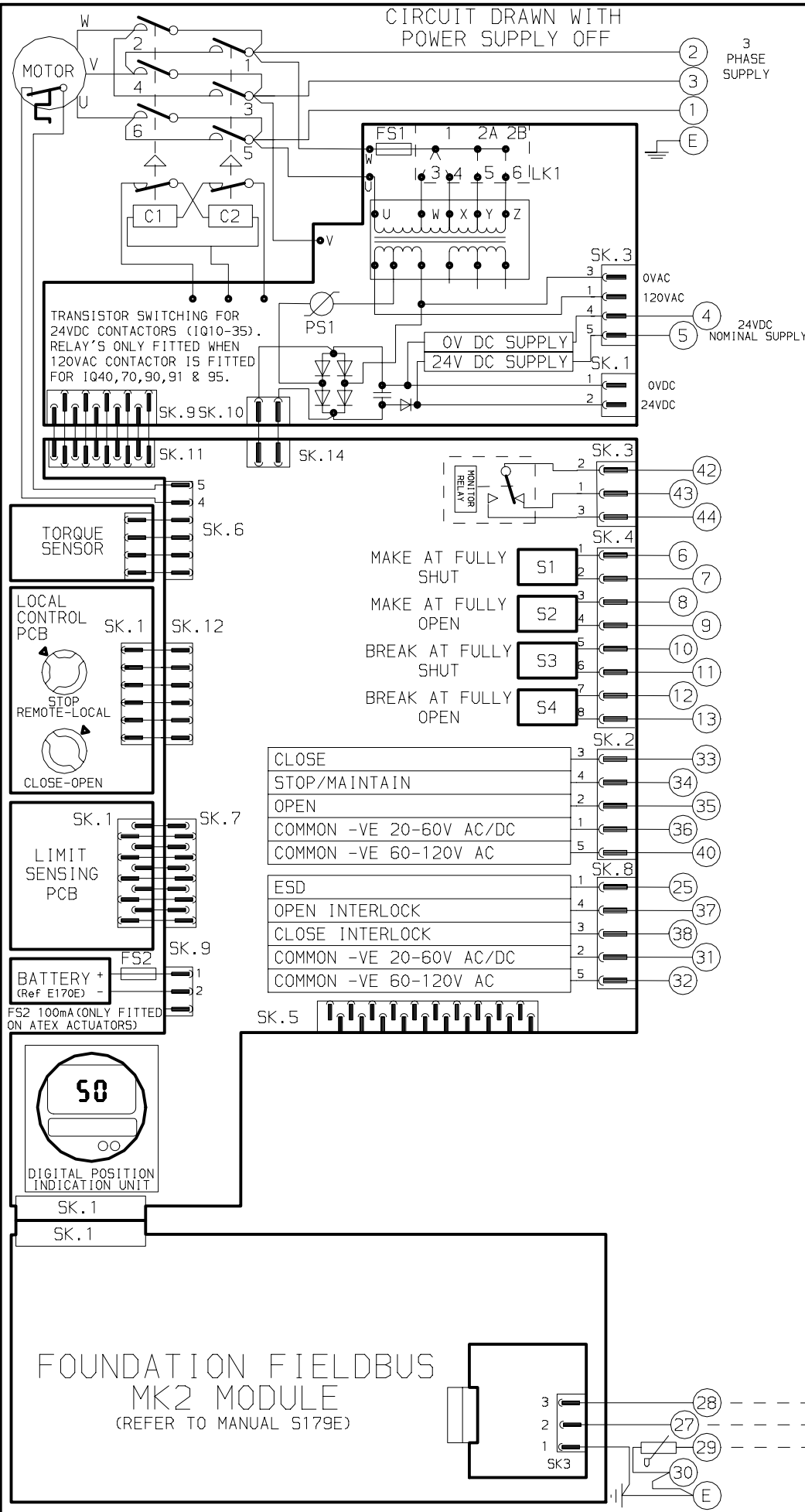
CONTROL SIGNAL THRESHOLD VOLTAGES  
TO BE MINIMUM 'ON' 20V AC/DC  
MAXIMUM 'OFF' = 3V  
MINIMUM CONTROL SIGNAL DURATION  
TO BE 300ms.

CURRENT DRAWN FROM EACH REMOTE  
CONTROL SIGNAL IS 5mA ON 24V DC  
OR 12mA ON 120V AC

WIRES ARE IDENTIFIED AT EACH END  
BY TERMINAL No. OR TAG No.

INDICATION CONTACTS S1-S4 ARE SHOWN  
IN THEIR DEFAULT CONFIGURATION.  
CONTACTS MAY BE CONFIGURED FOR ANY  
OF THE FUNCTIONS DESCRIBED IN E170E

FOR TYPICAL REMOTE CONTROL  
INDICATING, MONITORING AND ALARM  
CIRCUITS SEE PUBLICATION E120E



No	DATE	REVISION DETAILS
08	010307	IQPRO FIELDBUS UPDATE EC2197/4

**www.rotork.com**

ROTORK CONTROLS LTD  
BATH, BA1 3JQ  
ENGLAND  
Tel: 01225-733200

ROTORK CONTROLS INC  
ROCHESTER  
NY 14624, USA  
Tel: 585-328-1550

CONFIG BY PGS  
DATE 270999  
CHECKED PJW  
BASE WD 3000-800  
JOB No -  
M.I.No -

IQ + FOUNDATION FIELDBUS  
MODULE

CIRCUIT DIAGRAM No -REV 102  
**3000-800-08**

**B1 C1 B2 C2**