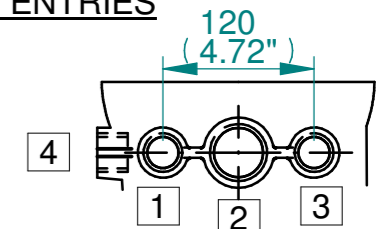
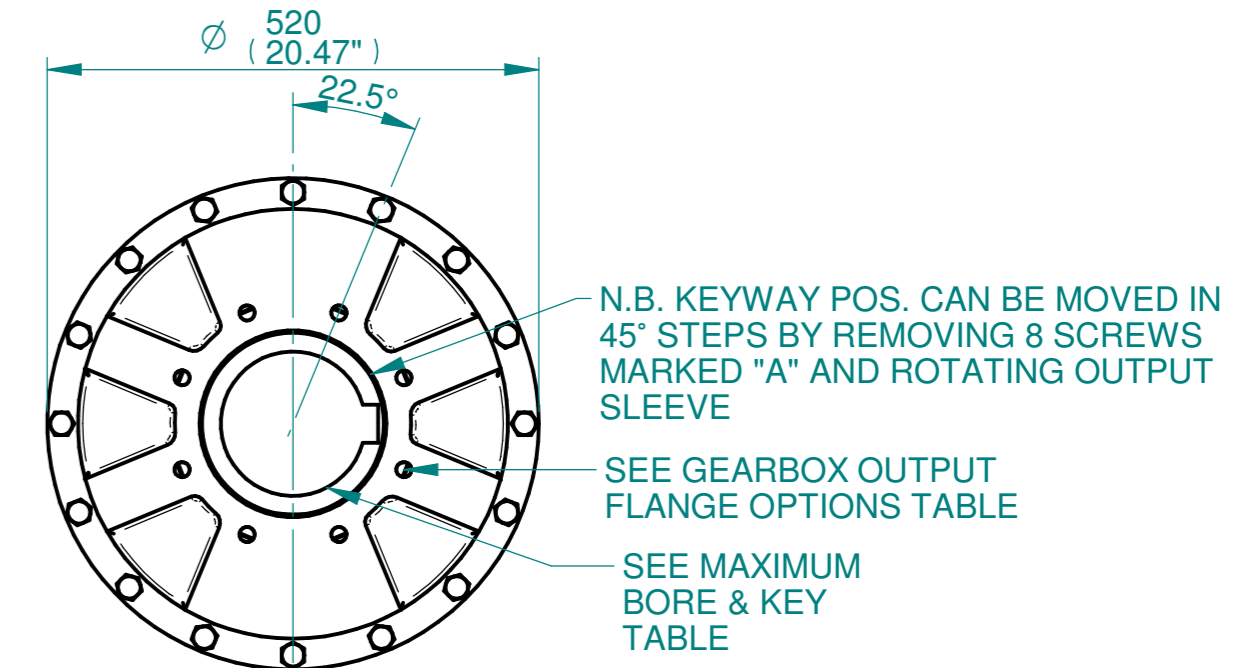
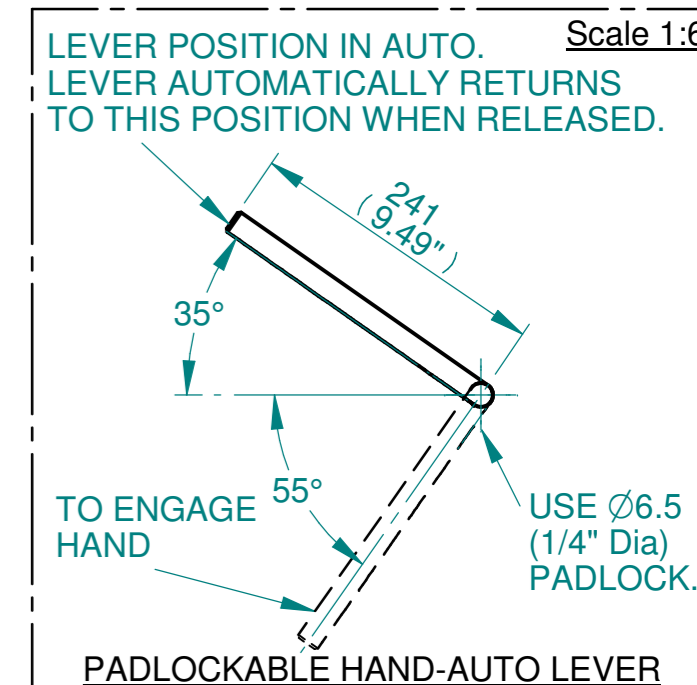
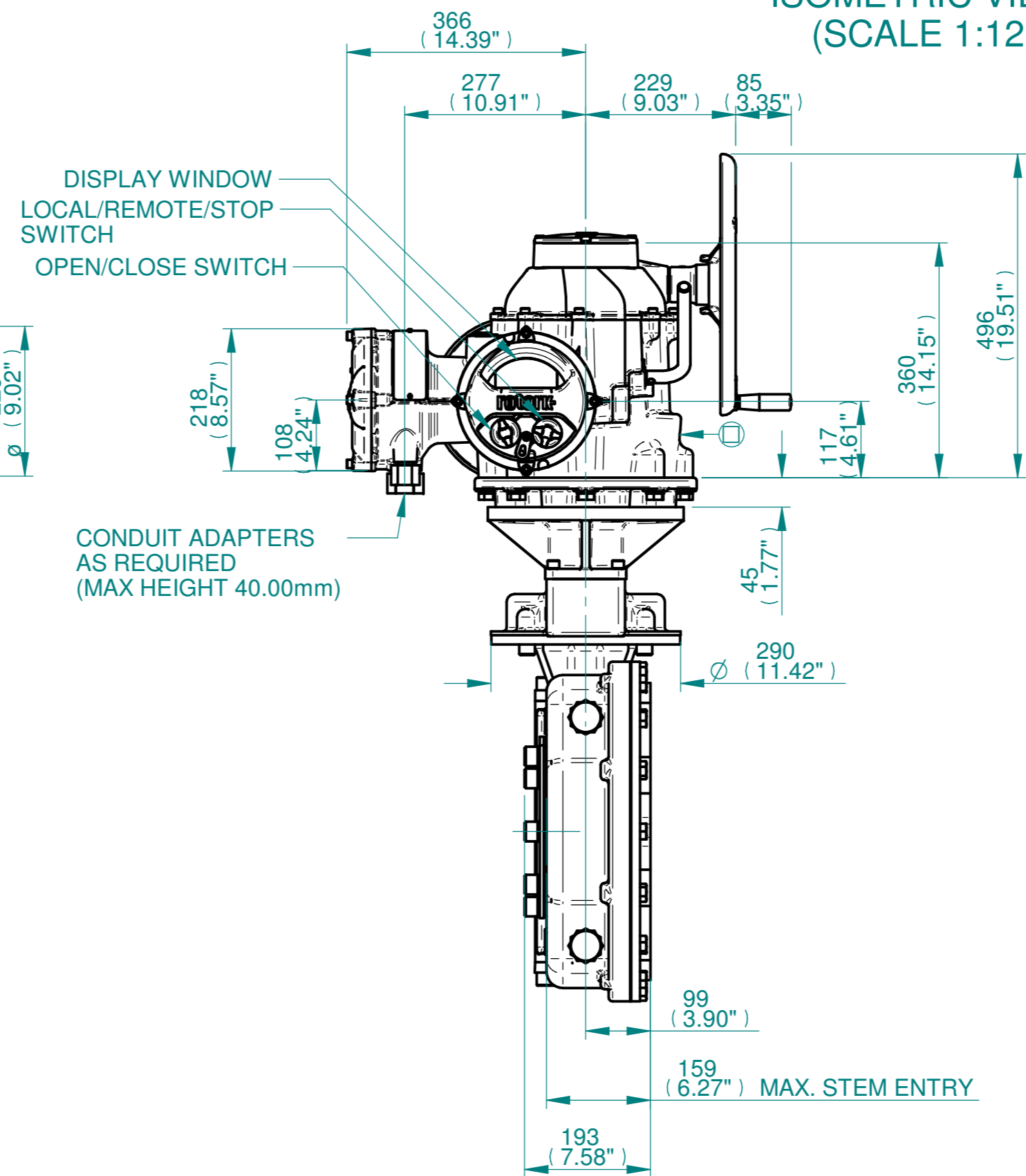
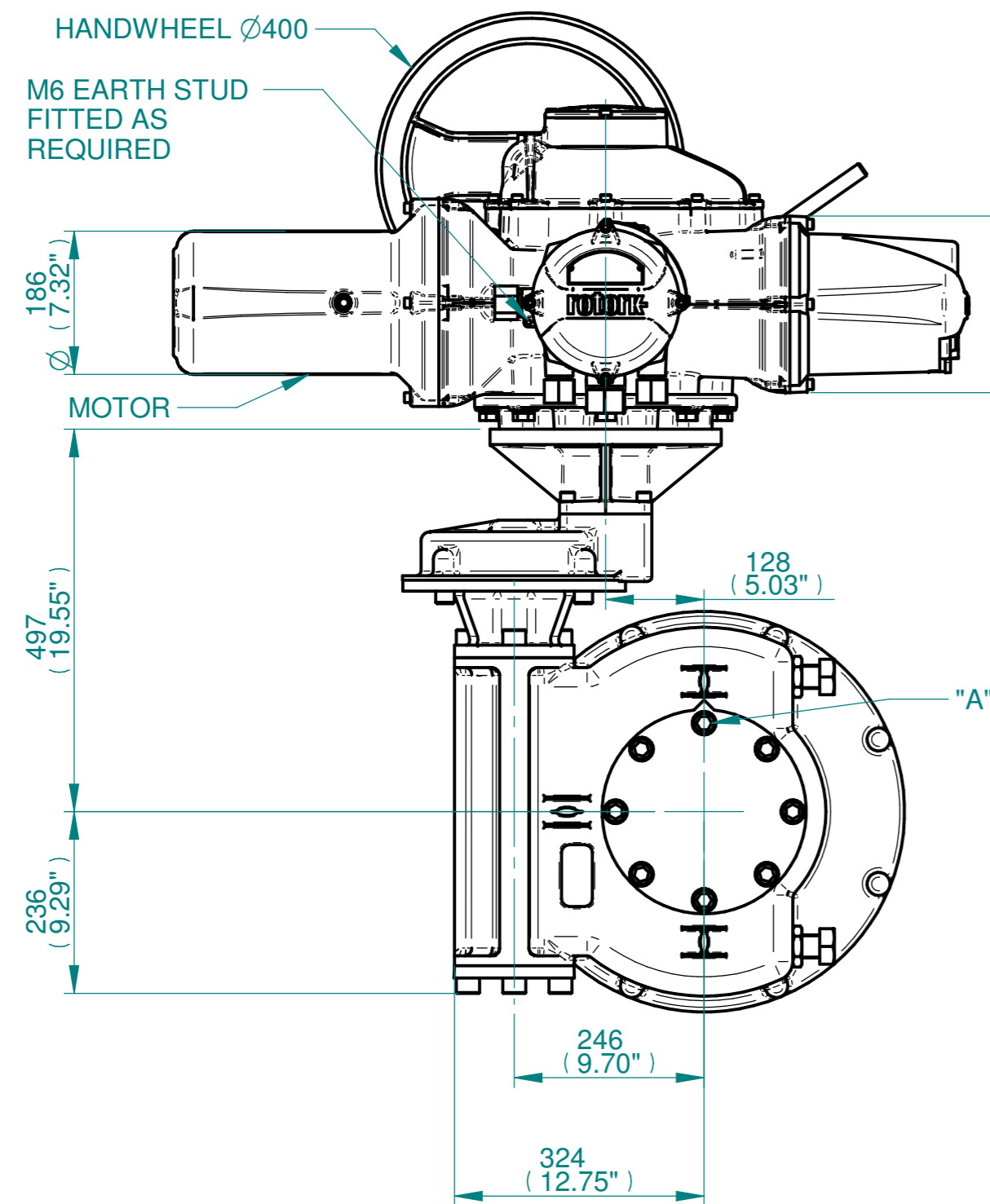


ISOMETRIC VIEW  
(SCALE 1:12)

CONDUIT ENTRIES



	Hole 1	Hole 2	Hole 3	Hole 4
Size	As Required	As Required	As Required	As Required
Plugged	As Required	As Required	As Required	As Required
Gland	As Required	As Required	As Required	As Required



3D Models are available in various formats under the same drawing number

Actuator Size: IQ70/90/95 IW8RL/MOW8RL		Gearbox output flange options								Maximum Bore & Key		
Title IQ70/90/95, SIDE H/W, IW8RL/MOW8RL, F25/F30/F35/F40/FA25/FA30/FA35/FA40, Ratios 120:1 - 360:1 Installation Details	Designation	F25	F30	F35	F40	FA25	FA30	FA35	FA40	Key form	Ø Bore	Key size
	No. Holes	8	8	8	8	8	8	8	8	Rectangle (BS4235)	157	40 X 22
	Hole size	M16	M20	M30	M36	5/8" UNC	3/4" UNC	1" UNC	1-1/4" UNC	Rectangle (ANSI B17.1)	6"	1-1/2 X 1"
	PCD	254	298	356	406	10"	11-3/4"	14"	16"	Square (ANSI B17.1)	5-5/8"	1-1/2" SQ
Drawn TED	Checked NJC	Date 18-AUG-14										
Ref SALES	Project Ref QUOTATION											

Issue	Description
2	4 ENTRY CHANGE
Scale: 1:8	
THIRD ANGLE PROJECTION	
A2	Drawing Number Issue No Sheet No
I15SHWIW8RLSTD	2 1 of 1

**rotork**  
www.rotork.com  
Rotork Controls Limited  
Bath, BA1 3JQ, England.  
Telephone 01225-733200

H  
G  
F  
E  
D  
C  
B  
A

1 2 3 4 5 6 7 8 9 10 11 12