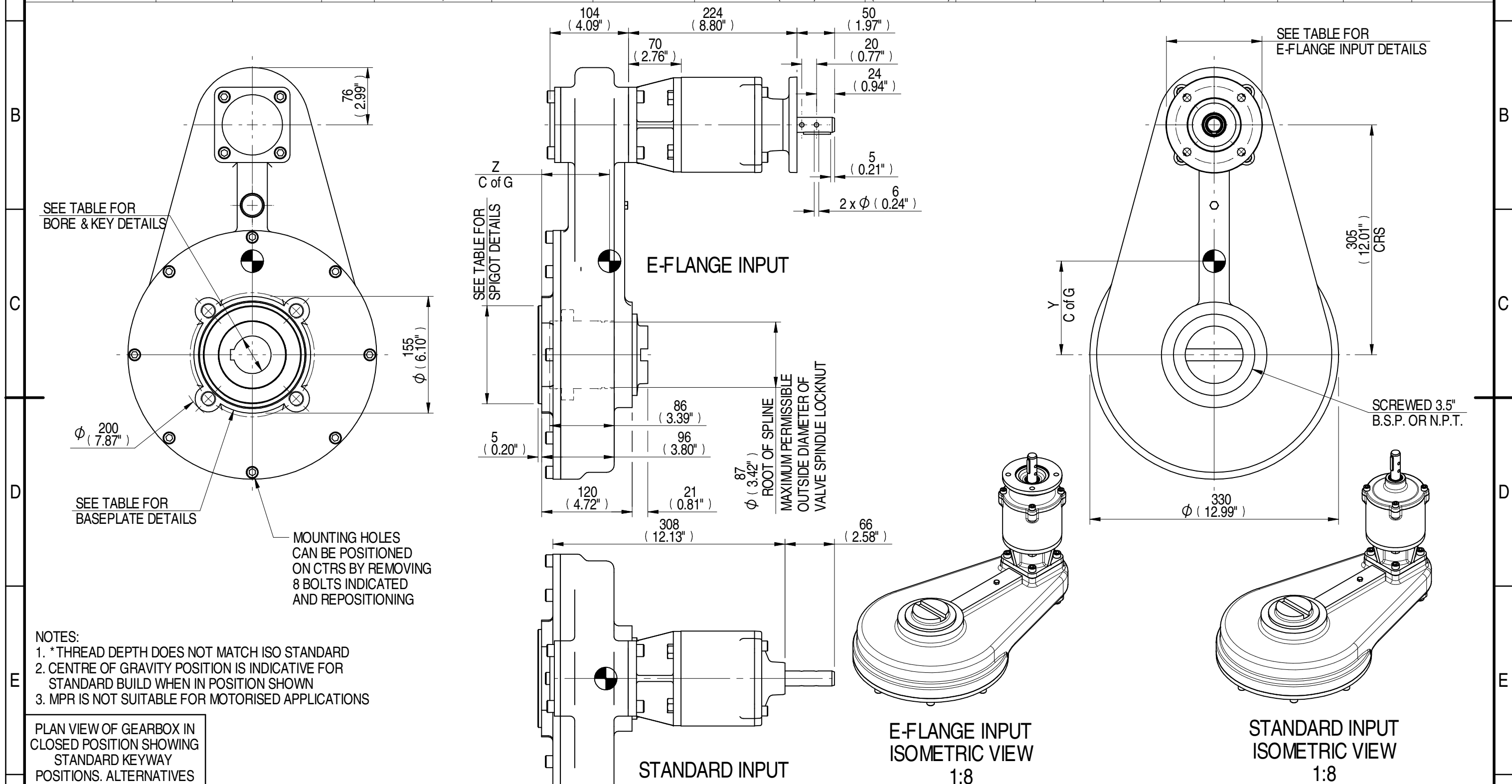


1	2		3		4			5		6			7			8	
E-FLANGE INPUT DETAILS					MOUNTING HOLES - BOLT CIRCLE (OFF CENTRES)					STEM ACCEPTANCE IN ACCORDANCE TO STANDARD							
INPUT FLANGE	FLANGE O/DIA. + THICKNESS	SHAFT DIA.	RECESS DIA.	RECESS DEPTH	HOLE DETAILS (45° OFF CENTRES)	KEY DETAILS	ISO 5211 / MSS SP-101 MOUNTING OPTION	HOLE DETAILS (45° OFF CENTRES)	SPIGOT DIAMETER	MAX SCREW STEM ACCEPTANCE	STANDARD	MIN BORE	SQ KEY MAX BORE	SQ KEY SIZE	RECT. KEY MAX BORE	RECT. KEY SIZE	SQ BORE MAX
	Ø126x11 (Ø4.96"x0.41")	19.98-0.05 (0.787"-0.002")	Ø70.05+0.05 (Ø2.758"+0.002")	3 (0.12")	4 x Ø10.5 ON Ø102.0 P.C. (4 x Ø0.41" ON Ø4.02" P.C.)	6x6x40 (0.24"x0.24"x1.57")	F16	4 x M20 x 25 (0.98") DEEP ON Ø165.0 (Ø6.50") P.C.	Ø129.95-0.05 (Ø5.116"-0.002")	73 (2.875")	BS4235	-	-	-	68.0	20 x 12	□ 53.3 (2.098")
						FA16	4 x 3/4" UNC x 25 (0.98") DEEP ON Ø165.1 (Ø6.50") P.C.	Ø126.87-0.25 (Ø4.995"-0.010")	ANSI B17.1		-	2.500"	5/8" SQ.	2.625"	5/8" x 7/16"		
									DIN 6885		-	-	-	-	-		



DESCRIPTION	TORQUE	CENTRE OF GRAVITY	AS PART OF CONTINUOUS PRODUCT DEVELOPMENT, ALL DETAILS SUBJECT TO CHANGE WITHOUT PRIOR NOTICE. FOR UP TO DATE DETAILS PLEASE VISIT www.rotork.com		
25.1	19.20	54.50	1700	89	0 116 91
16.7	12.80	56.80	1700	133	0 124 90
RATIO	M.A.	WEIGHT	MAX OUTPUT	MAX INPUT	X Y Z

Document Type	PUBLICITY	Mass	56.80 kg	Title	HOS7 MPR4 GEARBOX STANDARD/E-FLANGE INPUT REDUCER, F16/FA16 OUTPUT
Created	E CHANG	18/02/2015	Dimensions in mm	Scale	1:5
Checked	J DICKINSON	13/03/2015	Created	E CHANG	18/02/2015
Approved			Checked	J DICKINSON	13/03/2015
			Approved		
			Drawing Number	PUB-HOS7MPR4-F16	
			Sheet	1	of 1
			Size	A3	