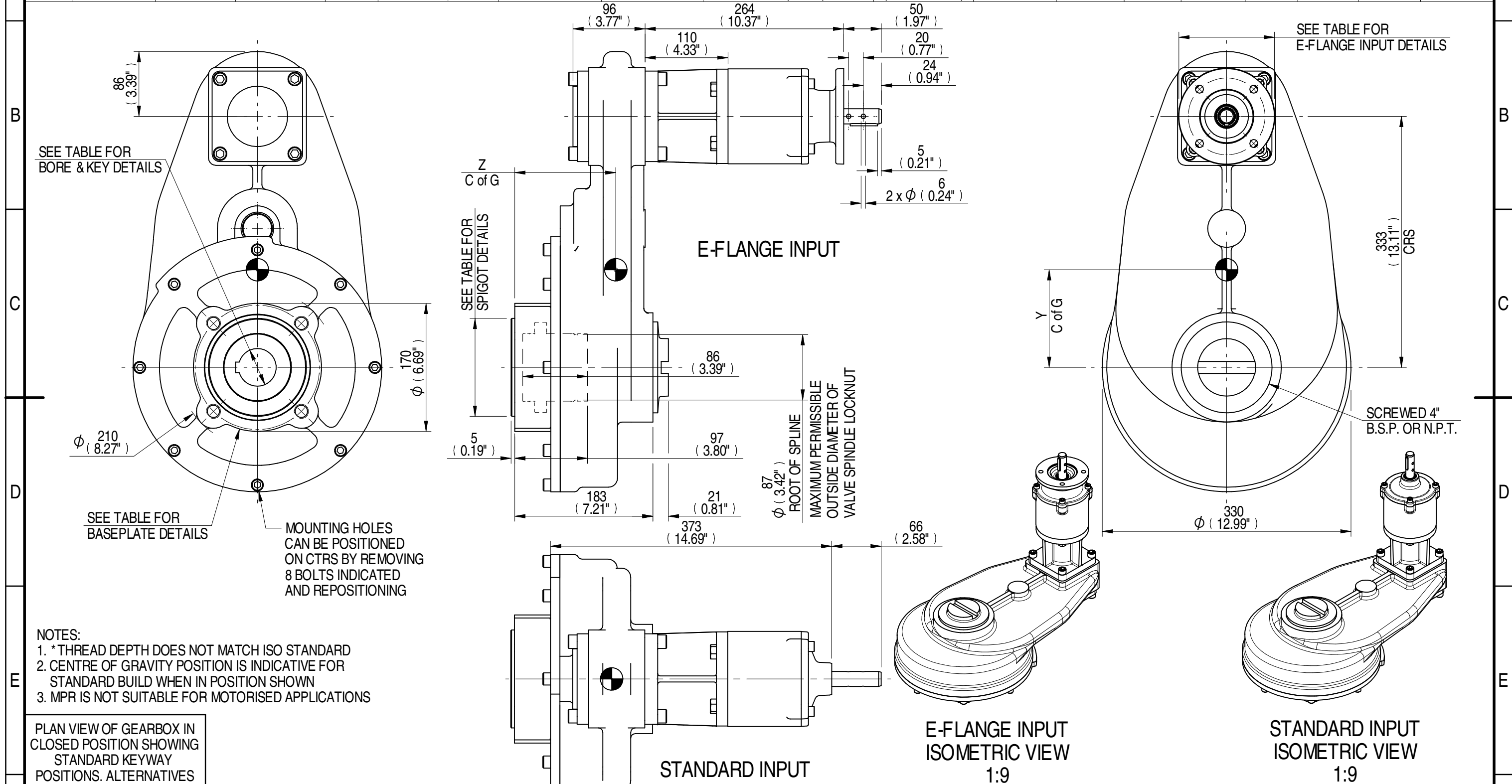


1		2			3		4			5		6			7			8	
E-FLANGE INPUT DETAILS		E-FLANGE INPUT DETAILS		E-FLANGE INPUT DETAILS		MOUNTING HOLES - BOLT CIRCLE (OFF CENTRES)			MOUNTING HOLES - BOLT CIRCLE (OFF CENTRES)			STEM ACCEPTANCE IN ACCORDANCE TO STANDARD			STEM ACCEPTANCE IN ACCORDANCE TO STANDARD				
INPUT FLANGE	FLANGE O/DIA. + THICKNESS	SHAFT DIA.	RECESS DIA.	RECESS DEPTH	HOLE DETAILS (45° OFF CENTRES)	KEY DETAILS	ISO 5211 / MSS SP-101 MOUNTING OPTION	HOLE DETAILS (45° OFF CENTRES)	SPIGOT DIAMETER	MAX SCREW STEM ACCEPTANCE	STANDARD	MIN BORE	SQ KEY MAX BORE	SQ KEY SIZE	RECT. KEY MAX BORE	RECT. KEY SIZE	SQ BORE MAX		
	Ø126x11 (Ø4.96"x0.41")	19.98-0.05 (0.787"-0.002")	Ø70.05+0.05 (Ø2.758"+0.002")	3 (0.12")	4 x Ø10.5 ON Ø102.0 P.C. (4 x Ø0.41" ON Ø4.02" P.C.)	6x6x40 (0.24"x0.24"x1.57")	F16	4 x M20 x 25 (0.98") DEEP ON Ø165.0 (Ø6.50") P.C.	Ø129.95-0.05 (Ø5.116"-0.002")	73 (2.875")	BS4235	-	-	-	68.0	20 x 12	□ 52.6 (2.071")		
						FA16	4 x 3/4" UNC x 25 (0.98") DEEP ON Ø165.1 (Ø6.50") P.C.	Ø126.87-0.25 (Ø4.995"-0.010")	ANSI B17.1		-	2.500"	5/8" SQ.	2.625"	5/8" x 7/16"				
									DIN 6885		-	-	-	-	-	-		-	



AS PART OF CONTINUOUS PRODUCT DEVELOPMENT, ALL DETAILS SUBJECT TO CHANGE WITHOUT PRIOR NOTICE. FOR UP TO DATE DETAILS PLEASE VISIT <a href="http://www.rotork.com">www.rotork.com</a>																	
<b>rotork</b> Gears LEEDS - UK <a href="http://www.rotork.com">www.rotork.com</a>		Document Type <b>PUBLICITY</b>		Mass <b>72.95 kg</b>		Title <b>HOS8 6:1 MPR4 GEARBOX STANDARD/E-FLANGE INPUT REDUCER, F16/FA16 OUTPUT.</b>		Created <b>E CHANG</b> 20/02/2015		Drawing Number <b>PUB-HOS8MPR4-25.5-F16</b>		Checked <b>J DICKINSON</b> 13/03/2015		Iss. <b>01</b>		Approved	
RATIO		M.A.		WEIGHT		MAX OUTPUT		MAX INPUT		CENTRE OF GRAVITY		Scale <b>1:5</b>		Sheet <b>1</b> of <b>1</b>		Size <b>A3</b>	
25.5		19.50		72.95		2550		130		0 130 134							
1	2			3		4			5		6			7		8	